

# Reflective Safety Signs

Increase safety in dark places



Our highly reflective ISO 7010 safety signs greatly increase safety in dark places. They reflect twice as much light when lit with a torch or vehicle headlights and can be used both in- and outdoors.

## Highly visible

Our reflective signs are highly visible because they reflect light back without blinding thanks to their retroreflective prismatic sheeting. In general, they are twice as reflective as signs with standard glassbead retroreflective sheeting. This will enable coworkers to better see the signs in dark and harsh weather environments when lit with a torch or vehicle headlights.

## Great for outdoor use

Reflective signs are available on aluminium boards for outdoor use. These boards feature double bended sides and do not have any sharp edges. They are available in round, triangular, square and rectangular shapes to fit any ISO 7010 safety sign shape. Every board is also available with round or square poles in different lengths, with brackets or base plates for optimal outdoor installation. All B-7658 signs have a great outdoor lifespan thanks to Brady's B-7639 UV blocking laminate that protects them.

## Customise

All reflective ISO 7010 safety signs can be customised in Brady factories. They can be delivered with or without legend, in any language. Custom sizes are available up to 0.9 x 4 metres.

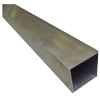
## Practical installation options

- Step 1: Select the ISO 7010 signs you need
- Step 2: Select pole lengths 1500 - 2000 - 2500 - 3000 - 3500 mm
- Step 3: Select square poles for temporary and round poles for fixed installation
- Step 4: Select brackets for the selected pole
- Step 5: Select base plates for temporary or fixed installation



## Poles and brackets

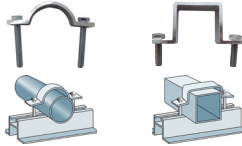
Square poles



Round poles



Select 1 pair of brackets per board you want to mount onto your pole



Base plates for permanent or temporary installations



## Accessories

Article No.	Description
306659	2 Fixing Brackets for 51mm Diam Pole
306660	2 Fixing Brackets for 40 x 40mm Pole
306661	Pole 51 dia x 1500 mm length
306662	Pole 51 dia x 2000 mm length
306663	Pole 51 dia x 2500 mm length
306664	Pole 51 dia x 3000 mm length
306665	Pole 51 dia x 3500 mm length
306666	Pole 40 x 40 x 1500 mm length
306667	Pole 40 x 40 x 2000 mm length
306668	Pole 40 x 40 x 2500 mm length
306670	Base (screw fix) for pole dia. 51mm
306671	Movable Base for pole 40 x 40 mm

## Reflective Safety Signs

Order Ref.	PIC Number	Width (mm)	Height (mm)	Diameter (mm)	Legend	Total Qty/Pack
<b>Reflective sheeting laminated to Aluminium</b>						
305604	M014			400		1 / Pack
305609	M014	600	400		Wear head protection	1 / Pack
305605	M014	400	600		Wear head protection	1 / Pack
305613	M015			400		1 / Pack
305618	M015	600	400		Wear high visibility clothing	1 / Pack
305614	M015	400	600		Wear high visibility clothing	1 / Pack
305739	M029			400		1 / Pack
305744	M029	600	400		Sound horn	1 / Pack
305740	M029	400	600		Sound horn	1 / Pack
305007	P013			400		1 / Pack
305012	P013	600	400		No activated mobile phones	1 / Pack
305008	P013	400	600		No activated mobile phones	1 / Pack
<b>Laminated Reflective Sheeting</b>						
303113	M014			395		1 / Pack
303886	M014	590	390		Wear head protection	1 / Pack
303114	M014	390	590		Wear head protection	1 / Pack
303118	M015			395		1 / Pack
303890	M015	590	390		Wear high visibility clothing	1 / Pack
303119	M015	390	590		Wear high visibility clothing	1 / Pack
303188	M029			395		1 / Pack
303946	M029	590	390		Sound horn	1 / Pack
303189	M029	390	590		Sound horn	1 / Pack
303434	P013			395		1 / Pack
304094	P013	590	390		No activated mobile phones	1 / Pack
303435	P013	390	590		No activated mobile phones	1 / Pack
304419	W014	310	268			1 / Pack
304424	W014	590	390		Warning; Fork lift trucks and other industrial vehicles	1 / Pack
304420	W014	390	590		Warning; Fork lift trucks and other industrial vehicles	1 / Pack
304428	W015	310	268			1 / Pack
304433	W015	590	390		Warning; Overhead load	1 / Pack
304429	W015	390	590		Warning; Overhead load	1 / Pack
304754	W051	310	268			1 / Pack
304759	W051	590	390		Warning; Unprotected edges	1 / Pack
304755	W051	390	590		Warning; Unprotected edges	1 / Pack



▶ Check product details and discover all ISO 7010 signs on the Brady website or via [emea\\_request@bradycorp.com](mailto:emea_request@bradycorp.com).

