



# 10 Time Winners in cable identification

Electrical, Tele- & Datacom  
Identification Tips

# Why these tips?

Cable and component identification labels usually aren't your prime concern, nor should they be. But have you ever lost time figuring out where which wire goes?

Ask yourself how much time or money you lose while trying to trace an unidentified cable, wire or component. Ask yourself how fast pressure builds when machinery, production lines, servers and services are impacted.

Cable and component identification labels are great tools to keep power, network, voice/data cables and components organised and running effectively. They enable you to quickly recognise which cable needs checking during troubleshooting.

When used correctly, professional cable & component identification can help you save a lot of time. Check out our 10 Time Winners in cable identification!

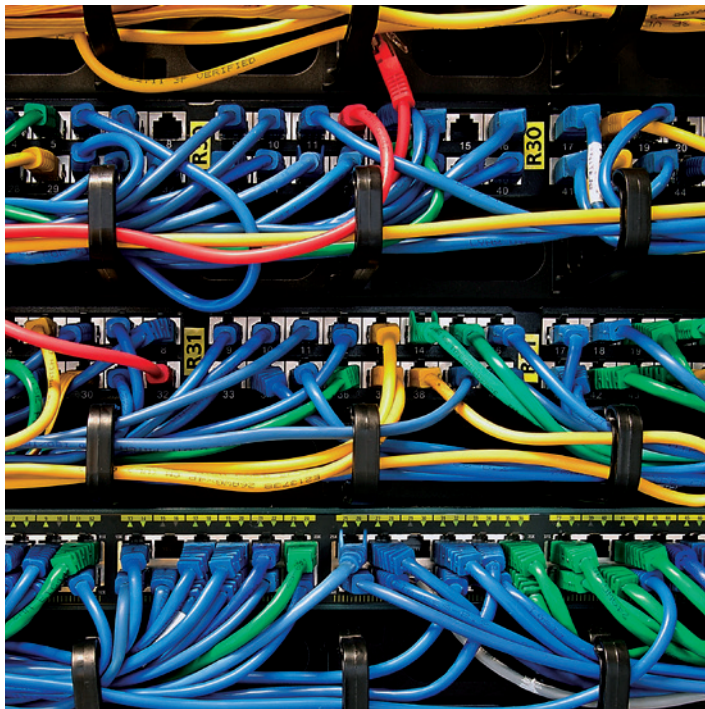


# Table of Contents

## 10 Time Wasters

## 10 Time Winners

Tracing cables by hand	pg 4-5	Quickly recognise every cable
Handwriting labels	pg 6-7	Print labels
Trying to fit oversized labels	pg 8-9	All sizes at your command
Great label, wrong environment	pg 10-11	Identification for every environment
Labels that fall off	pg 12-13	Labels that stay attached
Using a fixed printer	pg 14-15	Print on the move
Using a general purpose printer	pg 16-17	Cable & component identification printers
Low performance printers	pg 18-19	High performance printers
Starting with a blank canvas	pg 20-21	Using a professional wizard
Labelling hundreds of cables manually	pg 22-23	Automate high volume cable labelling



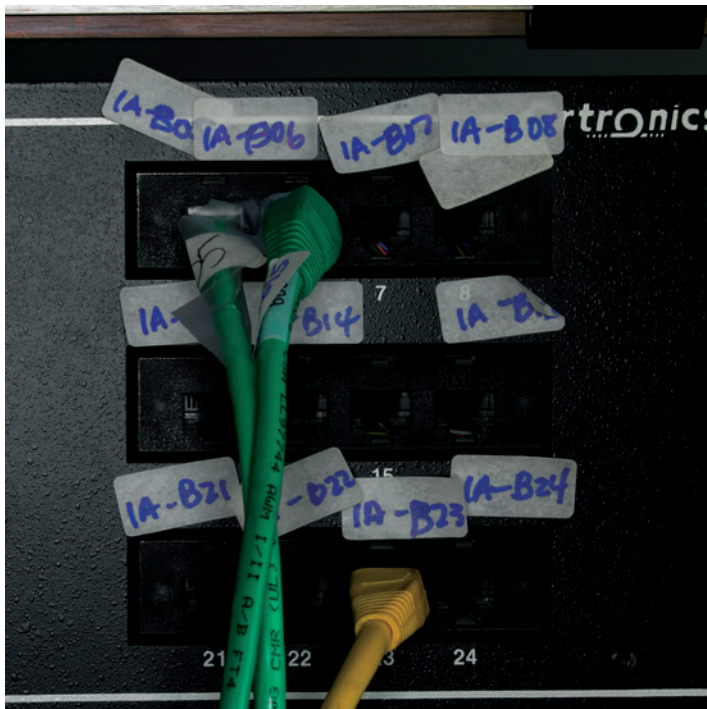
## Tracing cables by hand

It takes a lot of time to single out an unidentified cable, especially in thick cable bundles used in a great many professional contexts. When a business-critical system is down, it is a good idea to check if relevant cables are still working. In this case, tracing dozens of cables by hand because they weren't identified, requires valuable time you just won't have.



## Quickly recognise every cable

Clear identification labels, in various colours if necessary, enable you to quickly recognise every cable. A quality, printed identification label that stays attached and remains legible, can offer information via serial number or barcode on cable type, purpose, where it is attached, who supplied it and what its life expectancy is.



## Handwritten labels

We have nothing against beautiful handwriting, but it just isn't that practical to identify cables and components. Handwriting takes up too much space and has a higher risk of being misread. Most handwritten identification labels were also not written with specialised ink developed to remain legible in demanding environments.



## Printed labels

Printed labels are easier to read and enable the use of barcodes which allow you to attach a lot of relevant information where it matters most, even if it's on a small component or a tiny cable. The use of symbols, different font sizes, serialisation and automation is also within reach when using printed labels.



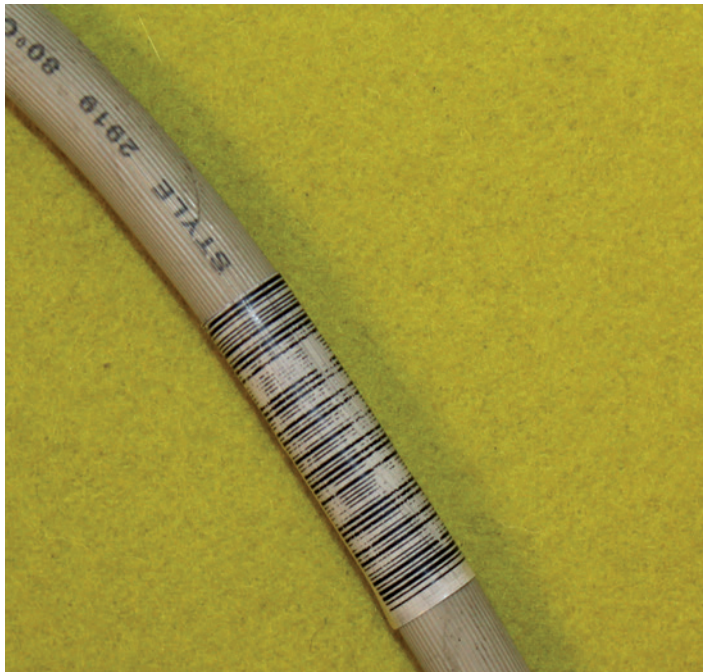
## Trying to fit oversized labels

A one size fits all identification label just doesn't exist. Variations in cable thickness and component size or design all seem to need a different size of identification label. Using large labels to identify everything will make your work look like a mess. Resizing labels on-site with scissors or knives is such a huge waste of time.



## All sizes at your command

Quality on-site identification printers place a range of relevant label sizes under your command. Available are tailored label sizes to neatly identify standard components from various manufacturers, and die-cut or continuous labels to wrap around and identify any cable size.



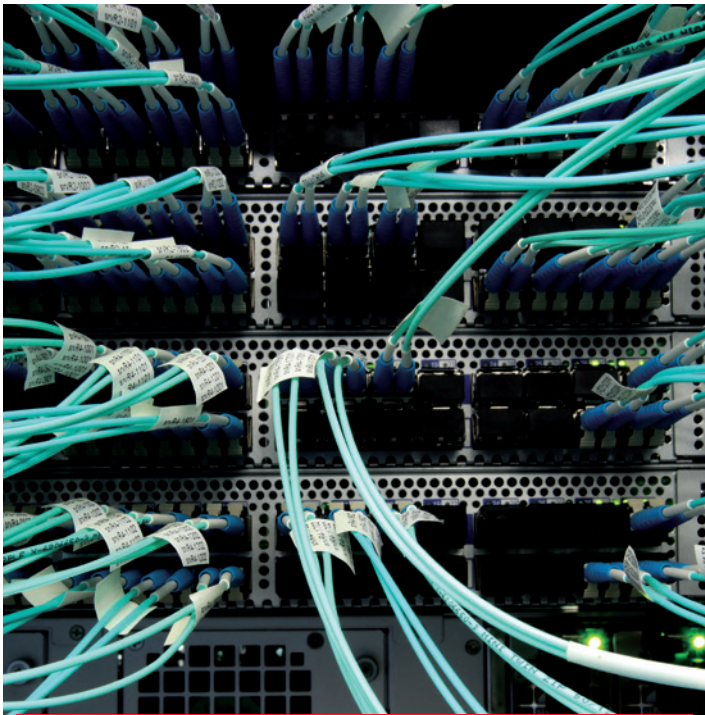
## Great label, wrong environment

Even quality labels can deteriorate quickly if they were not designed for your application or environment. Exposure to sunlight, moisture, heat or cold, abrasion or chemicals can make labels illegible or even outright destroy them. Choosing the wrong label could render your identification work useless within a few months.



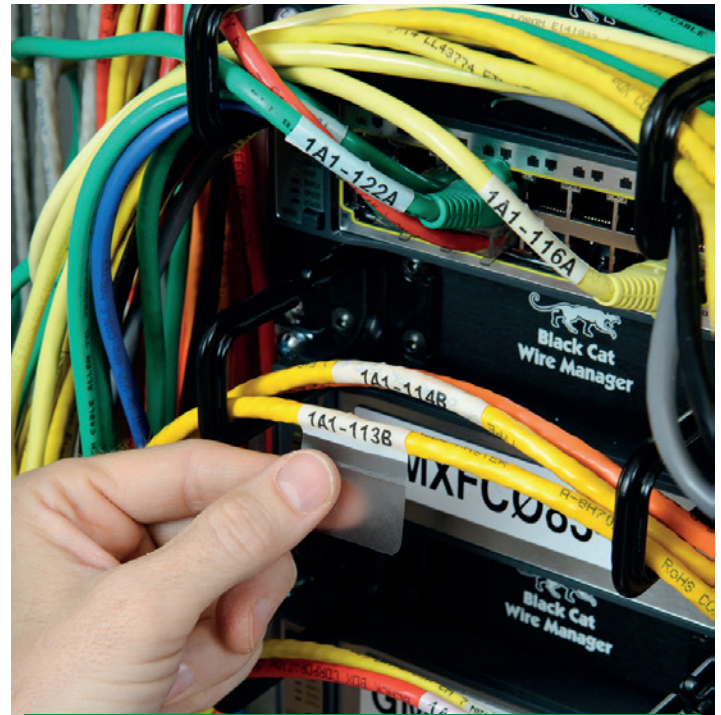
## Identification for every environment

Brady offers a wide range of labels, made out of different materials that are constructed to withstand extreme environments for years. Do you want to identify cables in a damp cellar or in hot environments? Place a durable label on a sun-exposed rooftop electrical component? We have a specialised label for your environment, and a guide to help you select the right label.



## Labels that fall off

Why identify anything with general multi-purpose labels that just fall off after a few weeks? Few things are as agonising as delivering sub-standard work because of poor tools. You thought every cable was identified, and you were ready for that business emergency, but now it looks like all your identification labels have fallen to the floor. Don't waste time re-applying those labels.



## Labels that stay attached

Use identification labels that are designed for your specific application. Quality labels to identify cables easily stick to curved surfaces because they are constructed using materials and adhesives for this purpose. Labels can stay attached in environments exposed to moisture or chemicals if they are equipped with the right, specialised adhesives.



## Using a fixed printer

If you are using a fixed, desktop printer to create your identification labels, you will always need to know in advance how many labels and which labels to take with you on location. Running back to the printer to create those few labels you might have forgotten, is an unnecessary loss of time.



## Print on the move

Use a mobile printer that prints the labels you need anywhere, anytime. Professional cable & component identification printers can easily serialise your cable labels, print barcodes on them or add standard symbols to communicate safety information for example. Need an extra label? Grab your printer and create it as you need it.





## Using a general purpose printer

Office printers are not well suited to identify cables and components. They use inkjet technology that places ink on top of a paper where it isn't well protected, and doesn't dry quick enough. The paper they print on also isn't strong enough.

Direct thermal printers use only heat, causing their print to become unclear and unreadable over time. Both inkjet and direct thermal identification labels can be huge time wasters in cable and component identification.



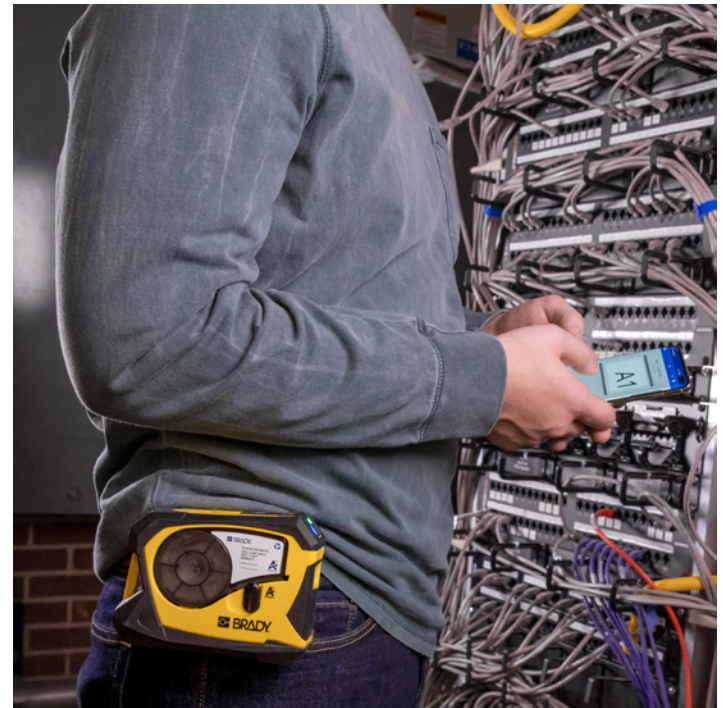
## Cable & component identification printers

Professional cable & component identification printers use thermal heat transfer-technology. The ink is burned into the label which creates a clear print with a good smear and chemical protection. Thermal heat transfer technology enables printing on a variety of durable label materials such as vinyl, polyester and nylon which will identify cables & components a lot longer than paper can.



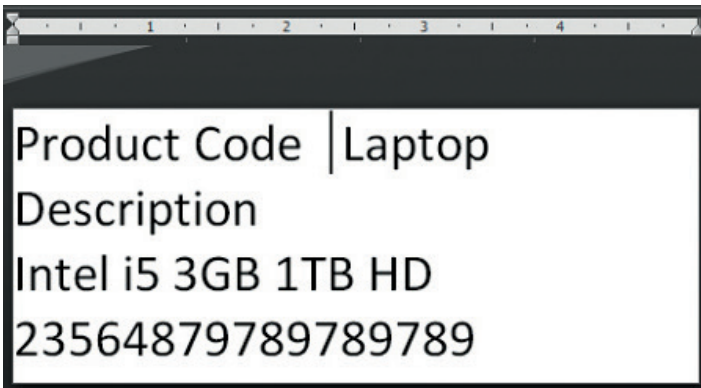
## Low performance printers

Once you have decided to print identification labels on-site, using a low performance printer is a sure way to get frustrated. Does your first label come out looking dodgy every time you use your device? Does it take a while to print? Can you only save a couple of label templates in your printer? Then maybe it's time to look for an identification printer whose performance matches your own.



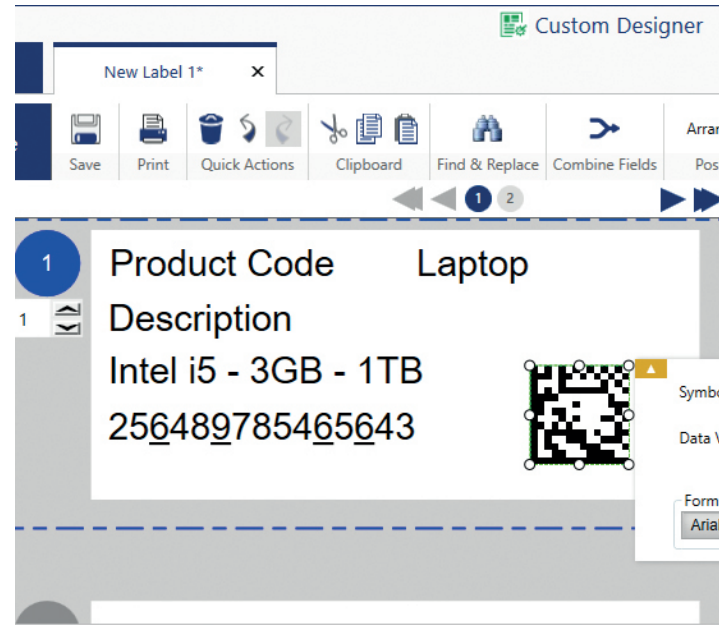
## High performance printers

A high performance printer uses a quality processor and prints durable labels at 30 mm/second. Its internal memory capacity should be 48 MB at least, and can go up to 200 MB to save a large number of label templates on the device itself. USB-connectivity and built-in professional symbols will help you identify cables and components even faster.



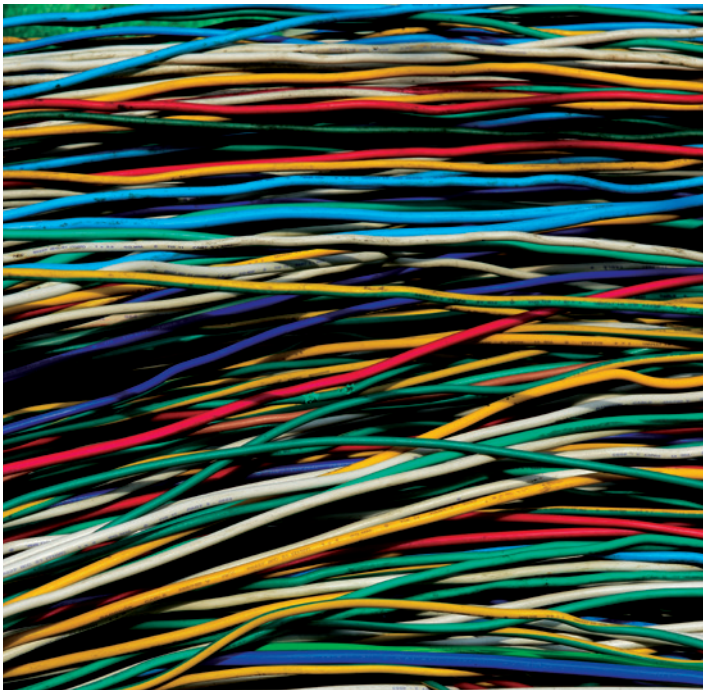
## Using a general software

There is, in itself, nothing wrong with creating an identification label with a general purpose software. But imagine you would have to do this for hundreds of labels. It takes a lot of time to design & correctly size each and every label on-site with a software that was never meant for label creation.



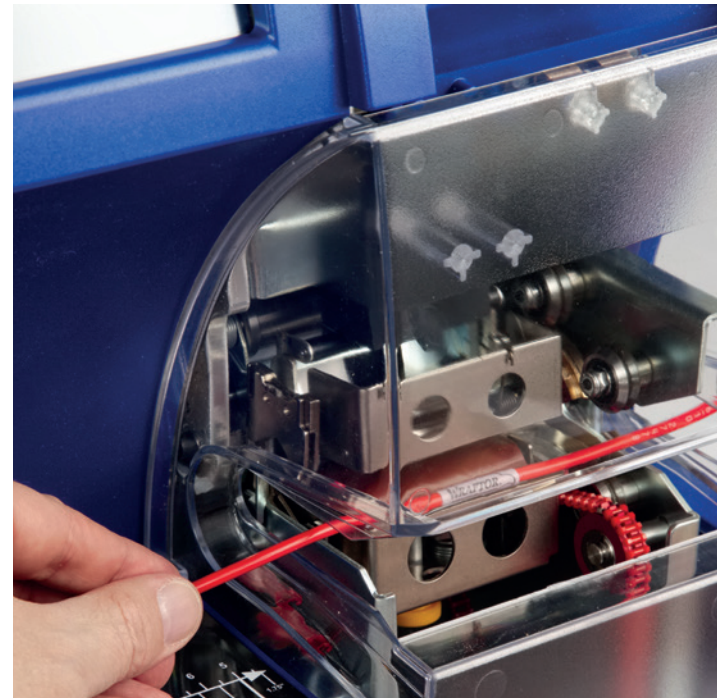
## Using a professional label software

Use a professional label software to create labels that comply with relevant standards. A professional label software quickly creates the right label for the job. In a few easy steps it guides you through label design, automatically uses the right label layout and size, adds the right symbols, and allows you to add text. Professional label software includes label creation wizards to easily identify terminal blocks, breaker boxes, and several types of cables.



## Labelling hundreds of cables manually

Manually wrapping labels around hundreds of cables to prepare and identify them before they are installed can be very time consuming and physically demanding. If you deal with large volumes of cables regularly, it's time to consider further automation.



## Automate high volume cable labelling

Quickly wrap labels around high volumes of cables with a cable identification print & apply system. One system can handle various cable diameters and print and apply identification labels to cables in under 5 seconds, that's roughly 12 times as fast as applying them by hand.



# Cable & component identification solutions to save time

In your professional hands, the right tools always get the job done faster and with greater result. That is why every Brady printer has a wide variety of labels, in up to 8 colours, that handle every situation:

- **Flag labels:** to print a lot of information on a tiny label.
- **Self-laminating labels:** to protect a vital barcode from abrasion, dirt or moisture.
- **Cable sleeves:** for extra durability before attaching a cable.
- **Engraved plate replacement labels:** to identify components with a label that looks just like a metal nameplate
- **More labels & custom solutions available!**

Brady's identification solutions are available in the most durable materials for your professional context:

- Polyolefin labels and sleeves that remain legible in wet environments, in high temperatures and when exposed to chemicals
- Vinyl labels available in many colours with excellent oil and dirt resistance, great UV-resistance
- Nylon labels that are very strong and flexible and show excellent chemical and extreme temperature resistance

# Time-saving on-site identification printing solutions

On-site printing power eliminates the need to carry loads of identification labels. Choose the printer that best fulfils your needs and select a few cartridges of label materials you frequently use.

Brady's printing solutions enable on demand printing of the most specialised cable and component labels in Electrical, Telecom and Datacom environments. They will save your preferred label formats for quick and easy reuse and cut your labels to size. Coupled with Brady's label software, they can print even complex identification labels with great ease.



# Design any label with Brady Workstation apps

Brady Workstation offers professional, intuitive apps to design quality product and cable labels and safety signs. Label design becomes easier, faster and quickly adaptable to new label norms thanks to centralised updates.

## Select the apps you need

Simply select the apps you need, download the 30-day trial and purchase when satisfied. Available product, cable, safety and facility identification apps enable you to create labels for:

- Cables
- Terminal blocks
- Control panels
- Datacom applications
- Wire harnesses



Try it today! Discover Brady Workstation by scanning the QR code.



#### **Africa**

Randburg, South Africa  
Tel.: +27 11 704 3295  
Email: africa@bradycorp.com

#### **Benelux**

Zelev, Belgium  
Tel.: +32 (0) 52 45 78 11  
Email: benelux@bradycorp.com

#### **Central & Eastern Europe**

Bratislava, Slovakia  
Tel.: +421 2 3300 4800  
Email: central\_europe@bradycorp.com

#### **Denmark**

Odense  
Tel.: +45 66 14 44 00  
Email: denmark@bradycorp.com

#### **France**

Roncq  
Tel.: +33 (0) 3 20 76 94 48  
Email: france@bradycorp.com

#### **Germany, Austria & Switzerland**

Egelsbach, Germany  
Tel.: +49 (0) 6103 7598 660  
Email: germany@bradycorp.com

#### **Hungary**

Budaörs  
Tel.: +36 23 500 275  
Email: central\_europe@bradycorp.com

#### **Italy**

Gorgonzola  
Tel.: +39 02 26 00 00 22  
Email: italy@bradycorp.com

#### **Middle East FZE**

Dubai, UAE  
Tel.: +971 4881 2524  
Email: me@bradycorp.com

#### **Norway**

Kjeller  
Tel.: +47 70 13 40 00  
Email: norway@bradycorp.com

#### **Romania**

Bucharest  
Tel.: +40 21 202 3032  
Email: central\_europe@bradycorp.com

#### **Spain & Portugal**

Madrid, Spain  
Tel.: +34 900 902 993  
Email: spain@bradycorp.com,  
portugal@bradycorp.com

#### **Sweden, Finland, Baltic states**

Kista, Sweden  
Tel.: +46 (0) 8 590 057 30  
Email: sweden@bradyeurope.com

#### **Turkey**

Istanbul  
Tel.: +90 212 264 02 20 / 264 02 21  
Email: turkey@bradycorp.com

#### **UK & Ireland**

Banbury, UK  
Tel.: +44 (0) 1295 228 288  
Email: uk@bradycorp.com

**We identify and protect people,  
products and premises.**

**[www.bradyeurope.com](http://www.bradyeurope.com)**

05/04/2022

EUR-M-799-EN

© 2024 Brady Worldwide inc. All rights reserved