



 **BRADY**

16 visuals
for a safe and efficient workplace

By printing your own signs, labels and tags on demand, you have the power to create a leaner, safer and more productive workplace.

These 16 visuals can help you communicate hazards, procedures and facility information at-a-glance to employees:



Did you know

**75% of knowledge
is gained through visuals**

SAFETY

1. CLP labels
2. Safety signs
3. Lockout/Tagout tags
4. Lockout/Tagout procedures
5. Evacuation identification

“5S” LEAN MANUFACTURING

6. Repositionable organisation labels
7. Kaizen & LDM board labels
8. Floor marking

MAINTENANCE/EQUIPMENT

9. Safe state & maintenance visuals
10. Raised panel labels
11. Pipe markers
12. Arc flash labels

OPERATIONS

13. Gauge labels
14. Operating procedure labels
15. One point lessons
16. Inventory labels

PRINT ON-SITE

17. Print your own signs and labels
18. Easily design signs and labels

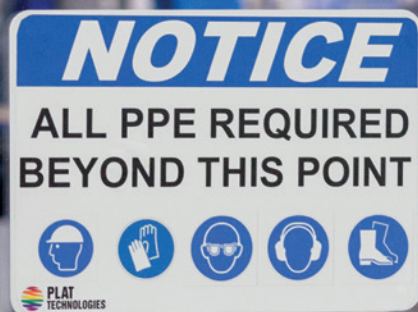


1. CLP labels

All chemicals should be clearly identified to achieve a safer workplace, and to be compliant with the EU CLP-regulation. CLP labels have 6 key elements to clearly explain chemical hazards: a signal word, symbols, product name, hazard statement, precaution statements and manufacturer information.

What you need:

- **Blank, continuous label supplies (B-595)** can be used with a multicolour panelled ribbon to print labels in two print passes, allowing for less supplies to be kept on hand
- **Pre-Printed CLP chemical labels (B-7569)** with pre-printed red diamonds allow the printer to produce 2-colour labels in one print pass
- **Blank, continuous & pre-cut label supplies (B-2595)** can be used to print full colour indoor labels in one single print pass, allowing for less supplies to be kept on hand



2. Safety signs

Create high quality and durable safety signs that can warn workers and visitors about hazards at a glance. With Brady's safety printers and software, you can easily create any safety sign and be aligned with a wide range of safety standards, norms and regulations, including ISO 7010.

What you need:

- **Blank, continuous label supplies (B-595)** can be used with a multi-colour panelled ribbon to print labels in two print passes, allowing for less supplies to be kept on hand
- **Pre-Printed Pre-Cut Blank Sign Headers (B-595)** allow you to quickly print multicolour signs with headers in a single print pass
- **Blank, continuous & pre-cut label supplies (B-2595)** can be used to print full colour indoor labels in one single print pass, allowing for less supplies to be kept on hand

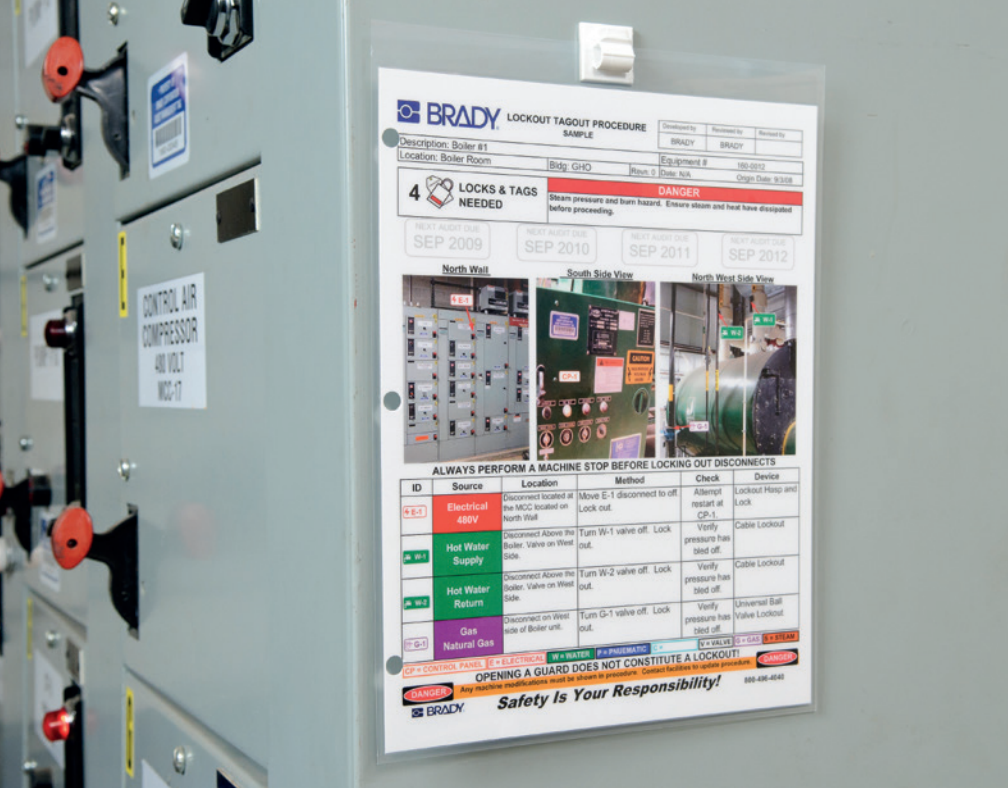


3. Lockout/Tagout tags

Durable tags on locked out energy control points can provide essential information in the workplace. Easily print a warning message, maintenance operation timing, contact information and even a picture of the responsible Team Leader to increase compliance and strengthen the safety of your maintenance teams.

What you need:

- **Non-Adhesive Pre-Printed & Pre-Cut Safety Tags (B-551)** with options including pre-cut holes, easy to hole-punch material, micro-perforation between tags, chamfered corners, pre-printed headers and the availability of snap-in plastic grommets
- **Indoor/Outdoor Vinyl (B-595)** to label electrical disconnects using durable, low-shrink vinyl with our most aggressive adhesive



4. Lockout/Tagout procedures

Lockout/Tagout procedures can save lives during maintenance by offering complete and precise steps on how to isolate machines from their energy supply. For optimal compliance, these procedures should be attached to the relevant machinery.

What you need:

- **Blank, continuous & pre-cut label supplies (B-2595)** can be used to print full colour indoor Lockout/Tagout procedures in one single print pass



5. Evacuation identification

Imagine your entire facility goes dark, or smoke is filling the hallways and reducing visibility in the event of a fire. Photoluminescent, or glow-in-the-dark tape and signs can help to clearly identify walkways, doors, exits, stairs, emergency utilities, alarm pulls and more.

What you need:

- **High-Intensity Photoluminescent Tape (B-526)** designed for directional and evacuation marking and equipment marking

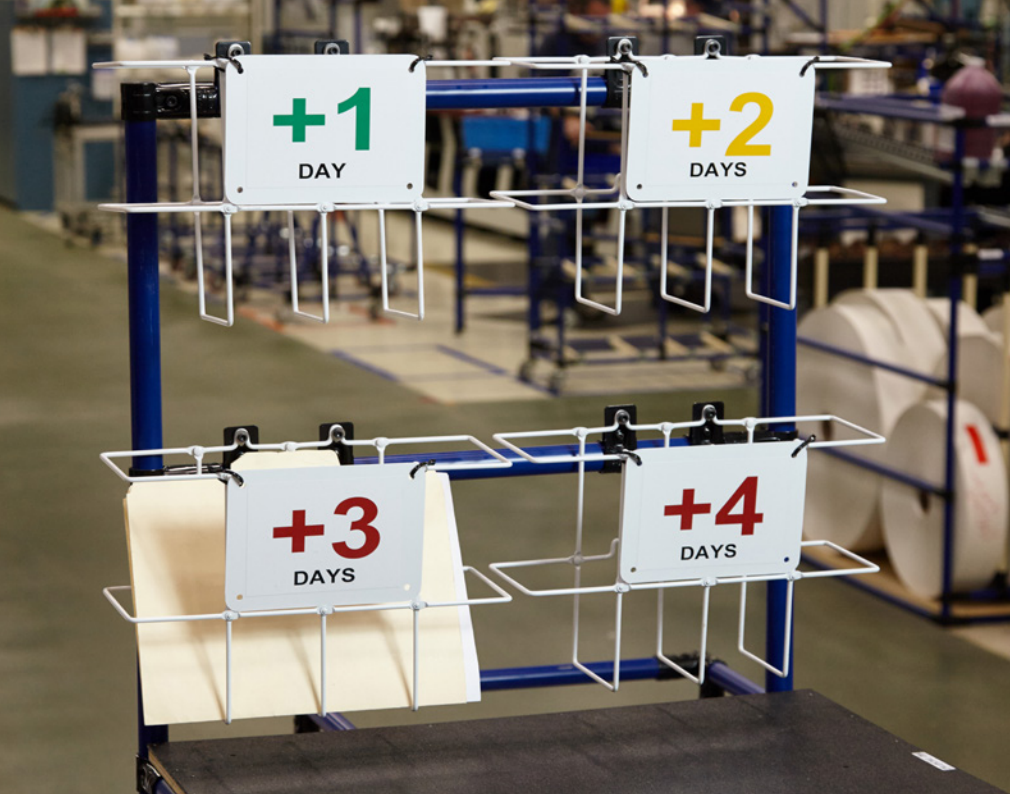


6. Repositionable organisation labels

Quickly add temporary safety signs to avoid accidents during one-off events, renovations or expansions. Easily rearrange repositionable adhesive or magnetic labels to accommodate changes in the safety precautions for specific areas or machinery.

What you need:

- **Repositionable Vinyl (B-581)** with aggressive adhesive that stays in place but removes cleanly without leaving adhesive residue
- **Printable Magnetic (B-509)** material is the easiest and quickest option for removing and repositioning



7. Kaizen & LDM board labels

Create a leaner workplace that clearly communicates metrics to employees with LDM boards, gives visibility to employee suggestions and progress with Kaizen idea boards, and helps resolve workplace problems with A4 boards. With the XY-plotter cutter in the BBP37 printer, you can easily cut out the letters you need in the colours you want to clearly label your boards.

What you need

- **Indoor/Outdoor Vinyl (B-595)** for general facility and safety identification
- **Blank Rigid Panels** work with adhesive output from your printer and are ideal for labelling situations and surfaces where applying an adhesive label is difficult



8. Floor marking

Keep your facility safer and more organised with durable floor marking tape. With industrial grade, high quality colour coded tapes, you can easily warn workers of hazardous areas or equipment, identify safe walking areas and forklift traffic lanes.

What you need:

- **ToughStripe printable floor marking tape (B-483 with overlaminate)** that withstands forklift and pallet jack traffic without tearing or lifting



9. Safe state & maintenance visuals

Equipment identification labels can be used to keep your operations running safely and efficiently. Easily identify equipment, its purpose, location and connections to remove guesswork from the workplace. Then, take it to the next level and create labels that indicate whether valves and air pumps should be open or closed, vibration and ultrasound probes are positioned correctly, and lubrication points are greased with the right quantity and frequency.

What you need:

- **Indoor/Outdoor Vinyl (B-595)** that adheres to low-surface energy, irregular, curved, rough and highly textured surfaces
- **Blank, continuous & pre-cut label supplies (B-2595)** can be used to print full colour indoor safe state visuals in one single print pass, allowing for less supplies to be kept on hand

AC UNIT 1

ACU SET POINTS:

66° FARENHEIGHT
45% RELATIVE HUMIDITY

AMBIENT TEMP ALARM

ALARM AT 105°F
SHUT DOWN AT 200°F

New Alarm:
SHORT CYCLE, COMP.1
ENTER key to silence
and continue.

ON

MENU

ENTER

10. Raised panel labels

Raised panel labels are used to identify enclosures, push buttons, property and more. With bright colours and clear text, they help employees to identify each button at-a-glance so they can safely and effectively perform the task at hand. These raised panel labels also cost 80% less than engraved legend plates, giving you a cost-effective alternative.

What you need:

- **Raised Profile Labels - Engraved Plate Substitutes (B-593)** that's a high-performance, low-cost substitute to engraved plates



11. Pipe markers

Pipe markers show important safety information when and where it matters. They can make a plant visually compliant and dramatically increase the safety of both employees and contractors by clearly showing which pipes, valves and taps contain or control dangerous contents.

What you need:

- **Low-Halide Polyester (B-569)** with low-halide content for labelling stainless steel pipes and surfaces
- **Indoor/Outdoor Vinyl (B-595)** adheres to bare, insulated or jacketed pipes with 8-10 year outdoor durability
- **Blank, continuous & pre-cut label supplies (B-2595)** can be used to print full colour indoor pipe markers in one single print pass, allowing for less supplies to be kept on hand

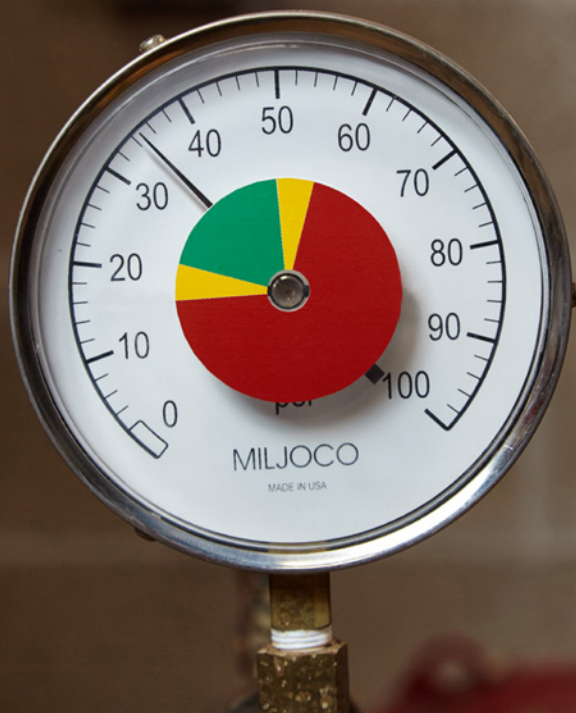


12. Arc flash

Arc flash labelling is an important responsibility that should be addressed by the employer and includes the labelling of electrical equipment, such as switchboards, panel boards, industrial control boards, meter socket enclosures and meter control centers. These labels should have relevant information to keep employees safe, including nominal system voltage, arc flash boundary and personal protective equipment information.

What you need:

- **Multi-coloured Arc Flash Labels (B-595)** can be created with blank, continuous label supplies and multi-colour arc flash labels using panelled ribbon, or with pre-printed header supplies



13. Gauge labels

By creating a simple gauge label, your employees and contractors can easily detect abnormalities at a glance – and at a distance. Without using gauge labels on your equipment, only a trained inspector would know if the temperature or pressure setting is correct.

What you need:

- **Circle Gauge Labels (B-595)** enable you to create labels to the specific diameter and range of values for your small or large gauges



14. Operating procedures

When steps to perform a task are challenging to follow and training needs to be reinforced, make sure you have detailed operating procedures available. These should explain what the employee needs to do, the order in which to do it, the amount of time or frequency of the task, and the desired outcome.

What you need:

- **Indoor/Outdoor Vinyl (B-595)** for general facility and safety identification



15. One point lessons

When a certain task is often overlooked, post a one-step lesson right at the point of need, using a label. That way employees will be quickly reminded to perform a task that can ensure a procedure completed safely and effectively.

What you need:

- **Indoor/Outdoor Vinyl (B-595)** for general facility and safety identification

A large roll of white vinyl material is shown on a shelf. To the left of the roll, there are two inventory labels. The top label is white with a red header and black text. The bottom label is white with a green header and black text. The roll of vinyl is thick and has a cardboard core in the center.

Max. 4 Rolls

REORDER
Min. 2 Rolls

16. Inventory labels

Use maximum and minimum level inventory labels to keep your operations running smoothly. With maximum level markers, you can avoid unnecessarily high inventory levels that tie up capital that could be used elsewhere, while minimum level markers identify when stock is running low and needs to be reordered. Adding colour provides a stronger visual cue to support the text portion of your message.

What you need:

- **Indoor/Outdoor Vinyl (B-595)** for general facility and safety identification



Print your own signs and labels!

Safety printers enable you to print durable safety signs, pipe markers and even safe work procedures on-site and on demand. They enable you to act immediately and they eliminate the need to store various safety signs for future use. [Check out the infographic!](#)



What you need:

Brady offers specialised thermal transfer and inkjet printers to create mono-, multi- and full colour signs and labels in various sizes with durable materials for both in- and outdoor use.

[**Contact us to find the best printer for your needs and get a free demo!**](#)





Easily design signs and labels!

Easily design the safety signs and labels you need with the intuitive apps in Brady Workstation!

The Brady Workstation Platform enables you to select the applications and functionalities you need to solve your safety identification challenges. Every app on the platform can be downloaded separately and you can decide which ones to keep after the free trial version.

What you need:

Download the Brady Workstation Platform at www.bradyeurope.com/workstation, select the apps you need and try them 30 days for free!



**Belgium & Luxembourg**

Tel: +32 (0)52 45 79 34
benelux@bradycorp.com

Czech Republic

Tel: +420 776 302 229
czechrepublic@bradycorp.com

Denmark

Tel: +45 66 14 44 00
denmark@bradycorp.com

France

Tel: +33 (0) 3 20 76 94 48
france@bradycorp.com

Germany, Austria & Switzerland

Tel: +49 (0) 6103 7598 660
germany@bradycorp.com

Hungary

Tel: +36 23 500 275
hungary@bradycorp.com

Italy

Tel: +39 02 26 00 00 22
italy@bradycorp.com

Netherlands

Tel: +31 (0)70 323 62 98
benelux@bradycorp.com

Norway

Tel: +47 70 13 40 00
norway@bradycorp.com

Poland

Tel: +48 22 104 6262
poland@bradycorp.com

Qatar, Saudi Arabia & UAE

Tel: +971 4881 2524
me@bradycorp.com

Romania

Tel: +40 799 233 910
romania@bradycorp.com

Slovakia

Tel: +421 902 939 406
slovakia@bradycorp.com

South Africa

Tel: +27 11 704 3295
africa@bradycorp.com

Spain & Portugal

Tel: +34 900 902 993
spain@bradycorp.com
portugal@bradycorp.com

**Sweden, Finland, Estonia, Latvia,
Lithuania**

Tel: +46 (0) 8 590 057 30
sweden@bradycorp.com

Turkey

Tel: +90 212 264 02 20
turkey@bradycorp.com

UK & Ireland

Tel: +44 (0) 1295 228 288
uk@bradycorp.com © 2023 Brady

We identify and protect people, products and premises.

www.bradyeurope.com

21.02.2020

EUR-M-896-EN

© 2024 Brady Worldwide inc. All rights reserved