



# BBP12 Label Printer

## Laboratory Identification

[www.bradyeurope.com/BBP12](http://www.bradyeurope.com/BBP12)



The BBP12 Label Printer is an entry level benchtop label printer for laboratory sample identification that offers great value for money. The compact BBP12 offers a high print speed of 100 mm/second and can handle a wide range of highly durable and specialised Brady identification labels.

Identifying your laboratory equipment has never been so easy. In laboratories, the compact BBP12 prints Brady's specialised labels for slides, straws, tubes, conicals and bottles which are able to resist liquid nitrogen, freezer, hot water bath or autoclave temperatures and/or a range of typical lab chemicals.

### Printer

Article No.	Order Reference
198595	BBP12-EU-U-PWID
195566	BBP12-EU+Unwinder
198600	BBP12-UK-U-PWID
195567	BBP12-UK+Unwinder
198602	BBP12-US-U-PWID
195568	BBP12-US+Unwinder

### Printer kits

Article No.	Order Reference
198596	BBP12-LAB Kit-EU
198597	BBP12-LAB Kit-UK
198598	BBP12-LAB Kit-US

### Accessory

Article No.	Order Reference
361064	BBP12/BBP11 Peel & Present

 The Basic Suite is included with every printer, all you need to do is download it. [Workstation.BradylD.com/Free](http://Workstation.BradylD.com/Free)

 Quickly identify your products and wires with customised text or graphical labels, using serialised or imported data. [Workstation.BradylD.com/ProductandWire](http://Workstation.BradylD.com/ProductandWire)

### There are a dozen good reasons to choose the compact benchtop entry level BBP12 Label Printer:

1. Prints a wide range of identification labels from 6 mm up to 112 mm wide
2. Compact in size, fits on every desk
3. Best price/quality in the market for low volume printing
4. Standard 300 dpi print quality allowing accurate image & barcode positioning on small labels
5. Full colour LCD Display and intuitive software interface are simple to use, so no extensive training is required
6. Simple calibration menu with easy 1-2-3 step printing
7. Default Ethernet Connectivity, allowing you to work in a network
8. Connect any universal keyboard via USB 2.0 to work in stand-alone mode
9. Print time and date on to your labels via the "Real time clock feature"
10. With its powerful 32 bit processor and its extended memory it can print up to 100 mm / sec
11. The printer supports the industry-standard Zebra® and Eltron® programming languages
12. Comes with a free unwinder accessory to print larger label rolls

PRINTER	
Weight	2.50 kg
Dimensions	Size - Depth: 258 mm Size - Height: 173 mm Size - Width: 202 mm
Max. Print Width (mm)	105.60 mm
Mode of operation	Stand-Alone with external keyboard & Peripheral

DISPLAY	
Display Type	Full colour LCD display
Display Resolution	300 dpi

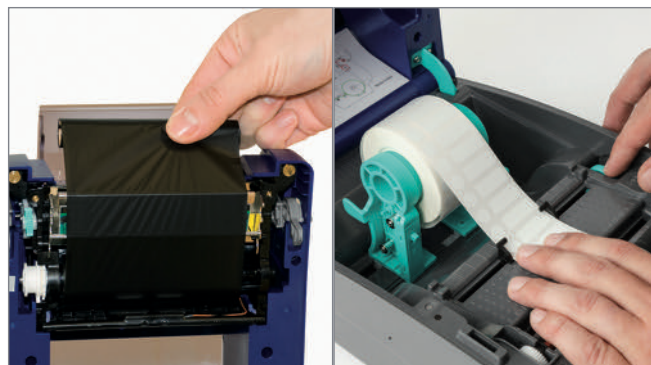
MATERIALS SUPPORTED	
Materials	Nylon Cloth, Paper, Polyester, Polyethylene, Polyimide, Polyolefin (Sleeves), Poly-propylene, Thermoplastic polyether-polyurethane, Vinyl, Vinyl Cloth, Outdoor Vinyl, Self-laminating Vinyl

BARCODES	
Barcode Type	2D and 1D (Linear)

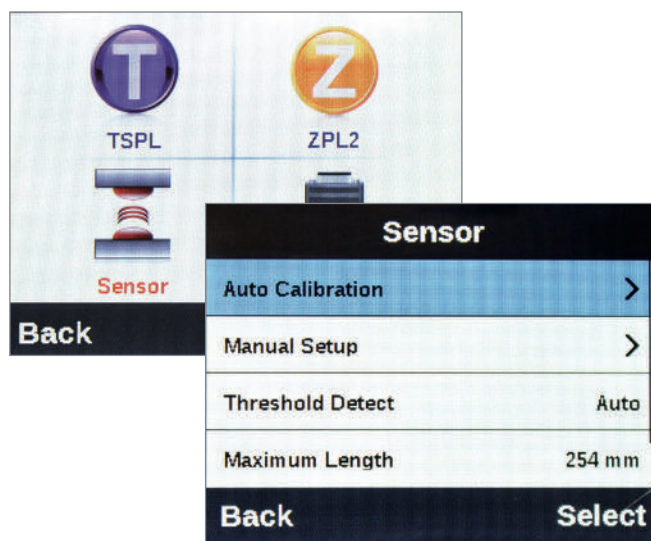
SOFTWARE & CONNECTIVITY	
Connectivity	Serial, USB 2.0, Ethernet
Software Compatibility	Brady Workstation, LabelMark, CodeSoft, Windows® based driver for 3rd party software

COMPLIANCE	
Approval/Compliance	UL; cUL; CE; RoHS; EAC

## Ready to print in 1-2-3



### Step 1: Insert media



### Step 2: Calibrate via Full Colour LCD Display



### Step 3: Print



Consult the video of the  
BBP12 Label Printer on  
[www.bradyeurope.com/BBP12](http://www.bradyeurope.com/BBP12)

**BRADY**  
WHEN PERFORMANCE MATTERS MOST™