



 BradyJet™

# J4000

Go big on full-color identification

**COLOR LABEL PRINTER**





# Versatile, full-color labeling **UP TO 8" WIDE**

Get photo-quality, full-color labels whenever you need them while reducing your inventory of labeling supplies and material waste. The BradyJet™ J4000 Color Label Printer helps you create compliance-driving, long-lasting labels, signs and tags for a safer, more efficient workplace.



## Print the right label, right now

Go from barcodes to color-coded labels to vibrant full-color photo tags — all with minimal material changes and waste.



## Drive compliance

Select and print regulatory colors that meet or closely approach those needed for ANSI, GHS, ISO, BS 5609 and arc flash.



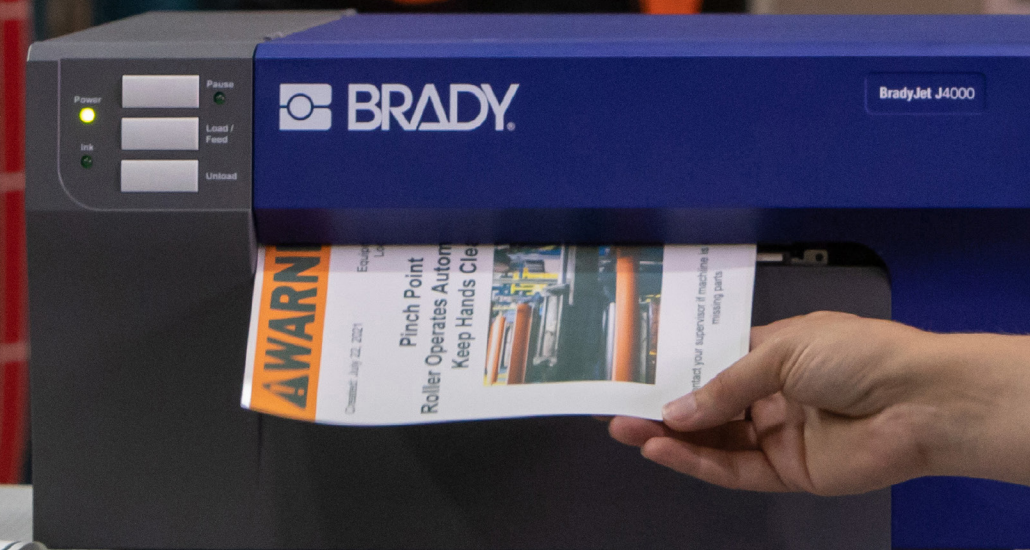
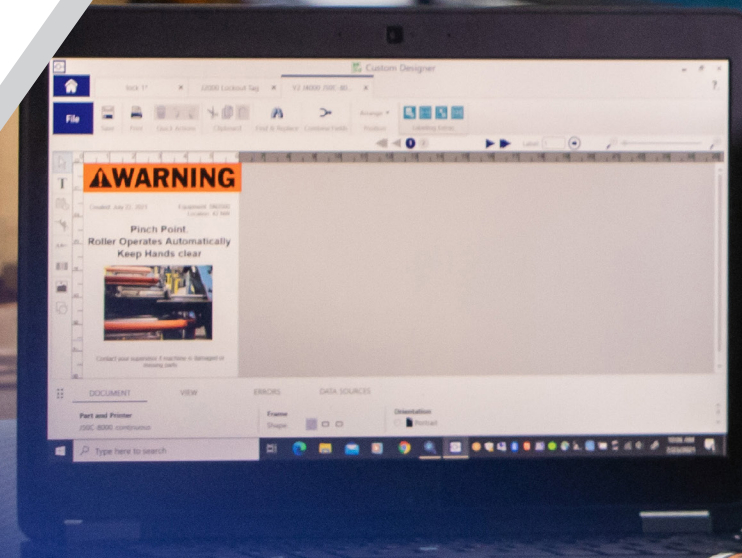
## Extend label performance

Rely on specially formulated materials and ink designed to stand up to harsh environments.



## Improve efficiency and reduce waste

Simplify with versatile blank-white material. Print any color on demand and reduce your inventory needs.



▶ Learn more at [BradyID.com/J4000](https://BradyID.com/J4000) or scan to watch the overview video.





# Full color. Large format. INDUSTRIAL GRADE

Power it on. Get it done.

When the printer does the busy work, you have more time to focus on the important work needed to keep your operations running smoothly. Maximize productivity and impact with this industry workhorse built to handle the demands of your demanding label and signage needs. Create up to 5,000 impactful full-color labels per day up to 8 inches wide.

## Key features



### Any color, any information — fast

- ▶ Colors closely approach or meet ANSI, GHS, BS 5609, ISO and arc flash compliance
- ▶ Vibrant graphics, photos and logos
- ▶ Single, high-capacity CMY ink cartridge



### Large-scale labeling simplified

- ▶ Prints labels and signs up to 8 inches wide
- ▶ Capable of printing up to 5,000 labels per day



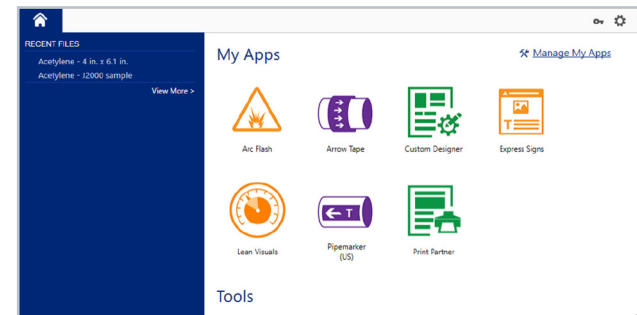
### Seamless create and connect

- ▶ Brady Workstation premade templates and graphics keyword search
- ▶ Windows® driver pulls in PDFs and third-party software
- ▶ Connect via USB or ethernet

Big production down to the smallest detail

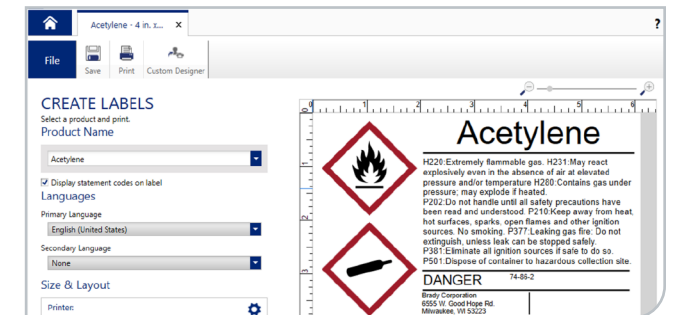
## Brady Workstation Labeling Software

Get everything you need to create the right label fast.



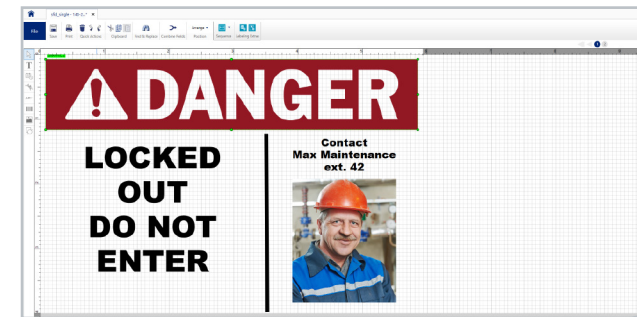
### Variety of specially designed suites

Choose from suites for safety, wire ID and more.



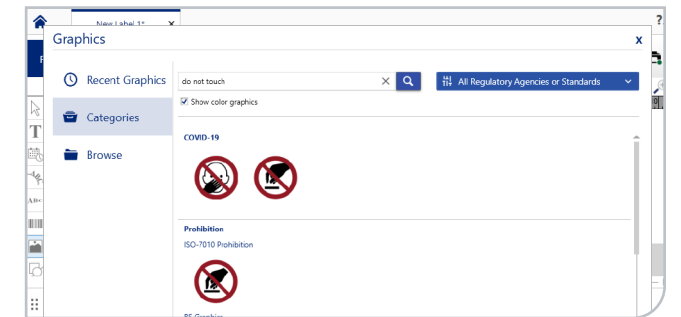
### GHS chemical identification

Enter SDS data once, then create and print anytime.



### Premade label layouts

Print common labels custom worded to your needs.



### Accessible graphics library

Search and filter by keyword, regulation or agency.

## Windows® Driver

Connect seamlessly to your data without error or delay.

### ▶ PDF ready

Easily pull in PDFs for fast printing of custom jobs and one-off requests.

### ▶ 3rd party software compatible

Connect to the labeling software of your choice in addition to included Brady Workstation.

# LABEL MATERIALS

At Brady, we go the distance to make sure you get what you need. Whether it's field work or lab work, we've got materials for every application.

Your most important information, including barcodes, images and small text, needs to stay legible in any type of environment. From freezing temperatures to blistering heat, when used with solvents or in outer space, Brady materials are all about high performance. Our scientists make sure of it. Brady's R&D program focuses on solutions that bring durability, flexibility and efficiency to every workday.

We offer hundreds of labels, so be sure to browse through the entire collection. And, as always, let us know if you need more.



## General Purpose Paper Labels (B-2550)

These budget-friendly inkjet printer labels deliver high-quality text and graphics on a smear-resistant matte surface, and are ideal for barcode labeling and general identification.



Catalog #	Width in. (mm)	Height ft./in. (m/mm)	Labels per roll
J40C-1125-2550	1.125 in. (28.58 mm)	100 ft. (30.48 m)	Continuous
J40C-2000-2550	2 in. (50.80 mm)	100 ft. (30.48 m)	Continuous
J40C-4000-2550	4 in. (101.60 mm)	100 ft. (30.48 m)	Continuous
J40-235-2550	1.50 in. (38.10 mm)	1 in. (25.40 mm)	1,050
J40-17-2550	2 in. (50.80 mm)	1 in. (25.40 mm)	1,000
J40-166-2550	2.5 in. (63.50 mm)	1.25 in. (31.75 mm)	850
J40-7-2550	2.75 in. (69.85 mm)	1.25 in. (31.75 mm)	850
J40-18-2550	3 in. (76.20 mm)	1 in. (25.40 mm)	1,050
J40-19-2550	3 in. (76.20 mm)	2 in. (50.80 mm)	550
J40-20-2550	3 in. (76.20 mm)	5 in. (127.00 mm)	200
J40-77-2550	4 in. (101.60 mm)	4 in. (101.60 mm)	280
J40-25-2550	4 in. (101.60 mm)	6 in. (152.40 mm)	180
J40-55-2550	4 in. (101.60 mm)	2 in. (50.80 mm)	550

## Chemically Resistant Polypropylene Material (B-7425J)

An economical solution for GHS labeling, this polypropylene material is ideal for full-color identification where resistance to harsh chemicals is required.



Catalog #	Width in. (mm)	Height in./ft. (mm/m)	Labels per roll
J40-260-7425J	2.17 in. (55.12 mm)	3.35 in. (85.09 mm)	340
J40-262-7425J	4.13 in. (104.90 mm)	6.10 in. (154.94 mm)	200
J40-265-7425J	7 in. (177.80 mm)	10 in. (254.00 mm)	100
J40-268-7425J	8 in. (203.20 mm)	11 in. (279.40 mm)	100
J40-321-7425J	8 in. (203.20 mm)	5.25 in. (133.35 mm)	100
J40C-2250-7425J	2.25 in. (57.15 mm)	100 ft. (30.48 m)	Continuous
J40C-4000-7425J	4 in. (101.60 mm)	100 ft. (30.48 m)	Continuous
J40C-6000-7425J	6 in. (152.40 mm)	100 ft. (30.48 m)	Continuous
J40C-8000-7425J	8 in. (203.20 mm)	100 ft. (30.48 m)	Continuous



## Polyester Material (B-2569)

For general purpose identification, this material fits the bill. It works best on smooth surfaces, making it ideal for use on rigid panels, and lasts up to two years outdoors.



Catalog #	Width in. (mm)	Height in./ft. (mm/m)	Labels per roll
J50-260-2569	2.17 in. (55.12 mm)	3.35 in. (85.09 mm)	340
J50-261-2569	2.95 in. (74.93 mm)	4.33 in. (109.98 mm)	270
J50-262-2569	4.13 in. (104.90 mm)	6.10 in. (154.94 mm)	200
J50-265-2569	7 in. (177.80 mm)	10 in. (254.00 mm)	100
J50-267-2569	6.10 in. (154.94 mm)	8.30 in. (210.00 mm)	120
J50C-2250-2569	2.25 in. (57.15 mm)	100 ft. (30.48 m)	Continuous
J50C-4000-2569	4 in. (101.60 mm)	100 ft. (30.48 m)	Continuous
J50C-6000-2569	6 in. (152.40 mm)	100 ft. (30.48 m)	Continuous
J50C-8000-2569	8 in. (203.20 mm)	100 ft. (30.48 m)	Continuous

## PermaShield Labels (B-996)

This 2-in-1 package includes a printable label (polyester or vinyl options) plus matching clear polyester overlaminate. It's ideal for a wide variety of applications requiring added durability, including product labeling, barcodes and Right-to-Know labels.



Catalog #	Width in. (mm)	Height in. (mm)	Labels per roll
J40PSL-260-2595	2.17 in. (55.12 mm)	3.35 in. (85.09 mm)	340
J40PSL-261-2595	2.95 in. (74.93 mm)	4.33 in. (109.98 mm)	270
J40PSL-262-2595	4.13 in. (104.90 mm)	6.1 in. (154.94 mm)	200
J40PSL-267-2595	6.1 in. (154.94 mm)	8.3 in. (210.82 mm)	120
J40PSL-260-2569	2.17 in. (55.12 mm)	3.35 in. (85.09 mm)	340
J40PSL-261-2569	2.95 in. (74.93 mm)	4.33 in. (109.98 mm)	270
J40PSL-262-2569	4.13 in. (104.90 mm)	6.1 in. (154.94 mm)	200
J40PSL-267-2569	6.1 in. (154.94 mm)	8.3 in. (210.82 mm)	120
J40PSL-136-2475	1.50 in. (38.10 mm)	0.75 in. (19.05 mm)	1,000
J40PSL-235-2475	1.50 in. (38.10 mm)	1 in. (25.40 mm)	750
J40PSL-137-2475	2 in. (50.80 mm)	1 in. (25.40 mm)	750
J40PSL-18-2475	3 in. (76.20 mm)	1 in. (25.40 mm)	750
J40PSL-19-2475	3 in. (76.20 mm)	2 in. (50.80 mm)	250
J40PSL-55-2475	4 in. (101.60 mm)	2 in. (50.80 mm)	250
J40PSL-25-2475	4 in. (101.60 mm)	6 in. (152.40 mm)	80

## BS 5609 Marine Material (B-2585)

BS 5609 Sections 2 and 3 certified, this option is ideal for applications where chemical identification is needed.



Catalog #	Width in. (mm)	Height in./ft. (mm/m)	Labels per roll
J50-260-2585	2.17 in. (55.00 mm)	3.35 in. (85.00 mm)	340
J50-261-2585	2.95 in. (75.00 mm)	4.33 in. (110.00 mm)	270
J50-262-2585	4.13 in. (105.00 mm)	6.10 in. (155.00 mm)	200
J50-267-2585	6.10 in. (154.90 mm)	8.3 in. (210.00 mm)	120
J50-268-2585	8 in. (203.00 mm)	11 in. (280.00 mm)	100
J50C-2250-2585	2.25 in. (57.15 mm)	100 ft. (30.48 m)	Continuous
J50C-4000-2585	4 in. (101.60 mm)	100 ft. (30.48 m)	Continuous
J50C-6000-2585	6 in. (152.40 mm)	100 ft. (30.48 m)	Continuous
J50C-8000-2585	8 in. (203.20 mm)	100 ft. (30.48 m)	Continuous

## Acrylic Overlaminates (B-910)

Achieve up to 10-year outdoor durability with acrylic overlaminates for BradyJet labels, offering superior UV and abrasion resistance.



Catalog #	Width in. (mm)	Height in. (mm)	Labels per roll
LAM-260-910	3.6 in. (91.44 mm)	2.42 in. (61.47 mm)	340
LAM-261-910	4.58 in. (116.33 mm)	3.2 in. (81.28 mm)	270
LAM-262-910	6.35 in. (161.29 mm)	4.38 in. (111.25 mm)	200
LAM-265-910	7.25 in. (184.15 mm)	10.25 in. (260.35 mm)	100
LAM-267-910	8.55 in. (217.17 mm)	6.35 in. (161.29 mm)	120

## Polyester Tags (B-2551)

Thick, polyester tagstock is compliant for accident prevention (OSHA 1910.145) and lockout (OSHA 1910.147) tags and general visual workplace labeling.



Catalog #	Width in. (mm)	Height in. (mm)	Labels per roll
J40-385-2551	3.25 in. (82.55 mm)	5.75 in. (146.05 mm)	100



## Vinyl Material (B-2595)

Difficult-to-adhere-to surfaces are no match for this inkjet workhorse. Low-shrink vinyl with ultra-aggressive adhesive stays stuck and lasts up to two years outdoors.



Catalog #	Width in. (mm)	Height in./ft. (mm/m)	Labels per roll
J50-260-2595	2.17 in. (55.12 mm)	3.35 in. (85.09 mm)	340
J50-261-2595	2.95 in. (74.93 mm)	4.33 in. (109.98 mm)	270
J50-262-2595	4.13 in. (104.90 mm)	6.10 in. (154.94 mm)	200
J50-265-2595	7 in. (177.80 mm)	10 in. (254.00 mm)	100
J50-267-2595	6.10 in. (154.94 mm)	8.3 in. (210.00 mm)	120
J50C-2250-2595	2.25 in. (57.15 mm)	100 ft. (30.48 m)	Continuous
J50C-4000-2595	4 in. (101.00 mm)	100 ft. (30.48 m)	Continuous
J50C-6000-2595	6 in. (152.00 mm)	100 ft. (30.48 m)	Continuous
J50C-8000-2595	8 in. (203.20 mm)	100 ft. (30.48 m)	Continuous
J40C-1125-2595	1.125 in. (28.58 mm)	100 ft. (30.48 m)	Continuous
J40-179-2595	1 in. (25.40 mm)	1 in. (25.40 mm)	1,500
J40-388-2595	1 in. (25.40 mm)	Diameter (circle)	500
J40-389-2595	1.50 in. (38.10 mm)	Diameter (circle)	500
J40-390-2595	2 in. (50.80 mm)	Diameter (circle)	500

## UL Approved Polyester Material (B-2475)

An ideal solution for products that require labels that meet UL 969 Standard for Marking and Labeling, these extra durable labels are resistant to abrasions, chemicals, oils and solvents.



Catalog #	Width in. (mm)	Height in./ft. (mm/m)	Labels per roll
J40-136-2475	1.50 in. (38.10 mm)	0.75 in. (19.05 mm)	1,000
J40-137-2475	2 in. (50.80 mm)	1 in. (25.40 mm)	750
J40-18-2475	3 in. (76.20 mm)	1 in. (25.40 mm)	750
J40-19-2475	3 in. (76.20 mm)	2 in. (50.80 mm)	250
J40-235-2475	1.50 in. (38.10 mm)	1 in. (25.40 mm)	750
J40-25-2475	4 in. (101.60 mm)	6 in. (152.40 mm)	80
J40-321-2475	8 in. (203.20 mm)	5.25 in. (133.35 mm)	100
J40-268-2475	8 in. (203.20 mm)	11 in. (279.40 mm)	100
J40-55-2475	4 in. (101.60 mm)	2 in. (50.80 mm)	250
J40-59-2475	1 in. (25.40 mm)	0.5 in. (12.70 mm)	2,250
J40C-1125-2475	1.125 in. (28.58 mm)	100 ft. (30.48 m)	Continuous
J40C-2250-2475	2.25 in. (57.15 mm)	100 ft. (30.48 m)	Continuous
J40C-4000-2475	4 in. (101.60 mm)	100 ft. (30.48 m)	Continuous
J40C-8000-2475	8 in. (203.20 mm)	100 ft. (30.48 m)	Continuous

## Repositionable Vinyl Material (B-2581)

Easily reposition and adjust this material during initial placement. It sets semi-permanently after about a day, making it ideal for Lean/5S and inventory labeling.



Catalog #	Width in. (mm)	Height ft. (m)	Labels per roll
J50C-2250-2581	2.25 in. (57.15 mm)	100 ft. (30.48m)	Continuous
J50C-4000-2581	4 in. (101.60 mm)	100 ft. (30.48m)	Continuous
J50C-6000-2581	6 in. (152.40 mm)	100 ft. (30.48m)	Continuous
J50C-8000-2581	8 in. (203.20 mm)	100 ft. (30.48m)	Continuous

▶ **Don't see what you need?** We're constantly updating our selection of labels based on user feedback, customer needs and industry trends. Find more of what you're looking for at [BradyID.com/J4000](https://BradyID.com/J4000) or scan the QR code.



## Part numbers and specifications

Catalog #	
J4000	BradyJet J4000 Color Label Printer
J4000-AM-BWSSFID	BradyJet J4000 Color Label Printer with Brady Workstation SFID Suite
J4000-AM-BWSPWID	BradyJet J4000 Color Label Printer with Brady Workstation PWID Suite
Ink and Storage Caps	
J40-CMY	J4000 CMY Ink Tank Cartridge
J40-CAP	J4000 Ink Cartridge Storage Caps
Software and Connectivity	
Connectivity options	Standard: USB 2.0, Ethernet 10/100
Compatible PC software	Brady Workstation, Windows Driver with 3rd party software
PC connect or standalone operation	PC connect
Operating systems	Windows® 10, Windows® 7, Windows® 8
Physical/Operational Characteristics	
Dimensions	17.25"W x 9.1"H x 17.25"D (438.15 mm W x 231.14 mm H x 438.15 mm D)
Weight	36 lbs. (16 kg)

Printer Features	
Typical throughput	5,000 labels per day
Printer technology	Thermal inkjet
Color capabilities	Single high capacity cyan, magenta, yellow ink cartridge; process black
Print resolution	4800 dpi
Print width	0.5" (12.70 mm) to 8" (203.20 mm)
Media width	1.5" (38.1 mm) to 8.25" (209.55 mm)
Print length	1.5" (38 mm) to 24" (609.60 mm)
Ink and material installation	Material: 3" core roll loading Ink: Ink and printhead cartridge
Print speeds	Draft Mode: 4.5" per second Normal Mode: 1.8" per second High Quality Mode: 0.8" per second
Printer includes	(1) BradyJet J4000 Printer; (1) Power Cord; (1) CMY Ink Cartridge with Built-In Printhead; (1) Pack of 2 Ink Cartridge Storage Caps; (1) Media Starter Roll 4" Wide B-2595 Vinyl; (1) USB Cord; (1) USB Flash Drive with Product Information; (1) Free Brady Workstation Version
Indicator lights	Power, Pause, Ink





We make products that make the world a safer and smarter place. From the depths of the ocean to outer space, from the factory floor to the delivery room — **we're just about everywhere you look.**

► For more information or to learn more about our innovative products, visit [BradyID.com](https://BradyID.com) or call 1-888-272-3946.

USA  
Customer Service: 1-888-272-3946  
[BradyID.com](https://BradyID.com)

Canada  
Customer Service: 1-800-263-6179  
[BradyCanada.ca](https://BradyCanada.ca)

Mexico  
Customer Service: 1-800-262-7777  
Inside Sales: 1-800-262-7777 ext 177  
[BradyID.com.mx](https://BradyID.com.mx)



Y6063687 MS6063687