



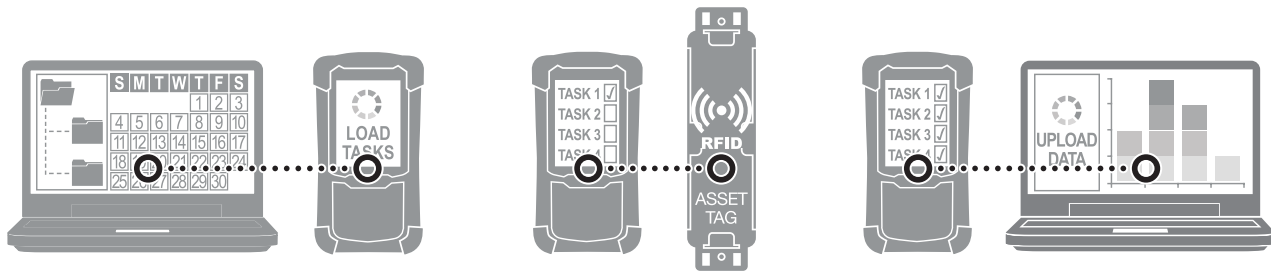
# Optimise equipment inspections with Safetrak

Digital planning, inspection and reporting

# Save lives with Safetrak

Too many workplace accidents are still caused by using equipment that is not fit for use. These accidents can have grave consequences. Imagine a scaffold collapsing: co-workers and passers-by might be seriously injured with colossal impact for themselves, their families and your business. Think about what happens when your fire extinguishers do nothing when they should, when valves suddenly break down, or when the reverse warning indicator on a forklift does not work.

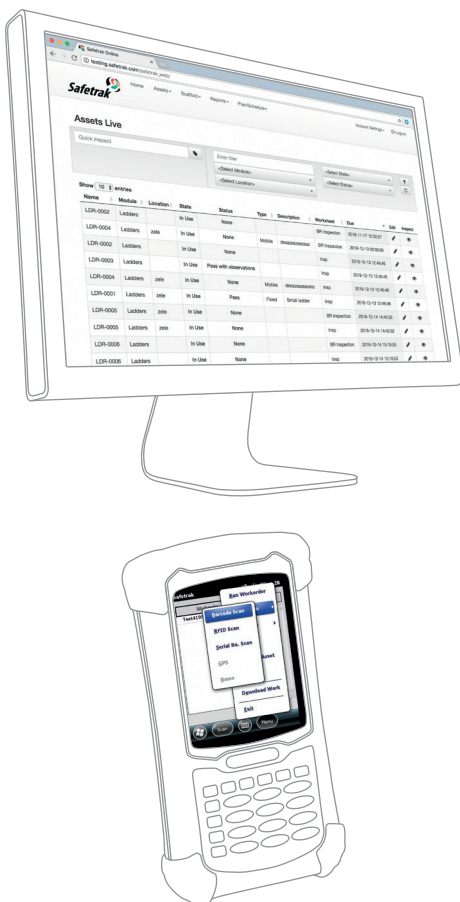
Diligent inspection planning, thorough equipment inspections and clear inspection reports and histories can save lives, avoid suffering and major costs in a lot of industries.



PLAN

INSPECT

REPORT



## What is Safetrak?

Safetrak is a digital system that supports businesses with inspection planning, equipment inspections and inspection reporting to maximise safety, improve resource performance and minimise costs.

### To do this, Safetrak offers:

- Digital planning of regular equipment inspections
- Guided, step-by-step customisable equipment inspections
- Automated reporting on demand or at regular intervals
- Digital book in/out for equipment

## Safetrak benefits

### Digital equipment inspections offer a number of advantages:

- Easy inspection planning complete with automated reminder emails
- Accurate, standardised, customisable equipment inspections
- Complete inspections on-the-job and immediately upload the completed template
- Auto-generate reports in one click including the latest inspection data
- Receive complete, auto-generated reports and audit trails at regular intervals via email



Video also available on the BradyEurope YouTube™ channel and: [www.bradyeurope.com/safetrak](http://www.bradyeurope.com/safetrak)

# Plan equipment inspections

Easily streamline planning and tasks

**Safetrak provides automated planning and can schedule tasks in a number of ways:**

- Easily plan recurring equipment inspections
- Export and email equipment inspection planning for feedback
- Plan inspections on a specific day, week, or month
- Plan inspections on an agreed date
- Assign inspections to users and optimise workload
- Auto-download assigned inspections on Safetrak handheld device
- Start inspections by identifying or scanning equipment
- Record equipment as missing or unavailable for inspection
- Auto-remind users to carry out planned inspections
- Receive e-mail notifications of failed and started inspections



## EQUIPMENT TAGGING

Uniquely identifying every piece of equipment unlocks all the advantages of Safetrak and allows inspections to be carried out even faster. Brady offers a wide range of durable equipment labels and Scafftag visual tagging tools designed for equipment inspections. The Scafftag visual tagging tools include a durable holder and replaceable inserts that can communicate numerous dates to co-workers on-site.

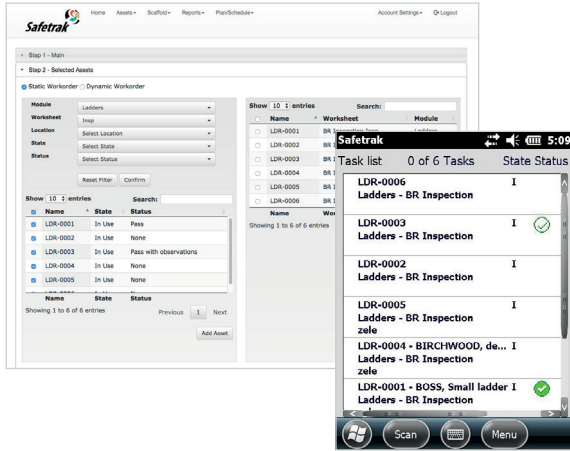


When equipment has not been inspected, or when it was deemed unfit for use, the insert can be removed leaving a clear 'Do not use' warning message on the durable holder. The holder can also include either a durable, barcode capable label or an RFID tag to easily identify equipment for inspection purposes.

# Inspect equipment

## Enhance your inspection flow

Safetrak automatically sends planned inspections to the handheld of the assigned inspector and starts a step-by-step inspection process.



- Provides the location of equipment that requires inspection
- Photographs and PDF's can be stored for every piece of equipment
- Starts a step-by-step inspection process once the equipment is identified or scanned
- Missing equipment or equipment unavailable for inspection can be noted
- New records can be created in the field when relevant
- Inspection data can be uploaded once complete

**Safetrak already includes 24 off-the-shelf inspection modules for various types of equipment. These can be customised, and new modules can be added according to the needs of your business.**

### WORKING AT HEIGHT



- Fall protection Arrest
- Harnesses
- Ladder
- MEWP
- Forklift
- Lifting Equipment
- Scaffold

### WORKSPACE CONTROL



- Asbestos Register
- Excavation
- Life Vest
- PPE
- Playground & equipment
- Safety Boards
- Safety Nets

### PLANT, VEHICLES, MACHINERY & TOOLS



- Electrical
- Fire Door
- Fire Extinguisher / Fire Point
- General Asset
- General Tool
- Heavy Plant
- Safety Shower / Eyewash

### PROCESS & PIPELINES



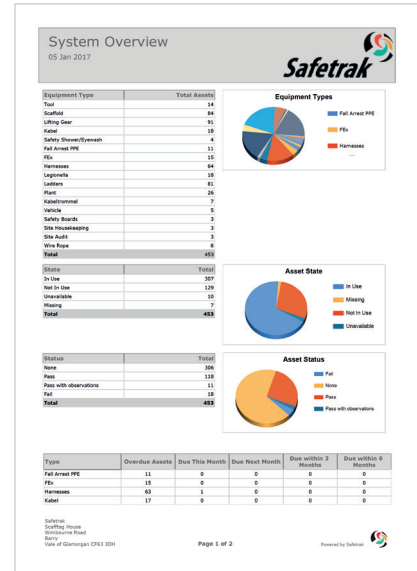
- Concrete pipe
- Flange
- Site Audit

# Automated reporting

Available in one click

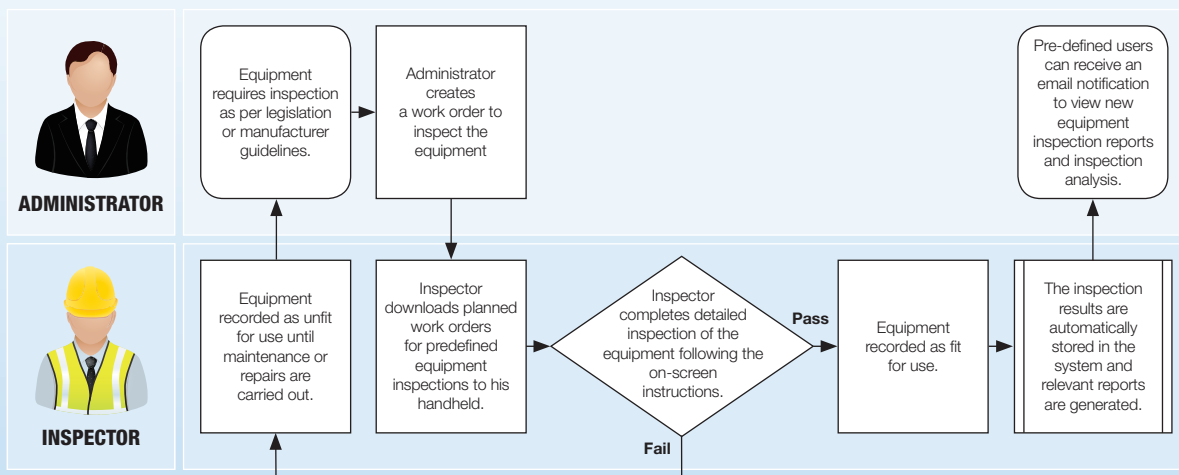
Safetrak automatically centralises all of the inspection data collected on-site and provides an up-to-date status and audit trail for equipment.

- Provides up-to-date reports instantly
- Removes the burden of paper report writing
- Provides a complete audit trail
- Offers report generating tools to compare equipment, locations and time periods
- Can generate an equipment register
- Can generate inspection status for every piece of equipment
- Can generate inspection performance data
- Can generate causes of equipment failure
- Can generate a list of assets by location
- Can generate a history of individual assets



## SAFETRAK WORKFLOW EXAMPLE

The example below shows a common workflow to set up, inspect, maintain and dismantle scaffolding. This complex workflow can be optimised with Safetrak to quickly and safely respond to client requests.

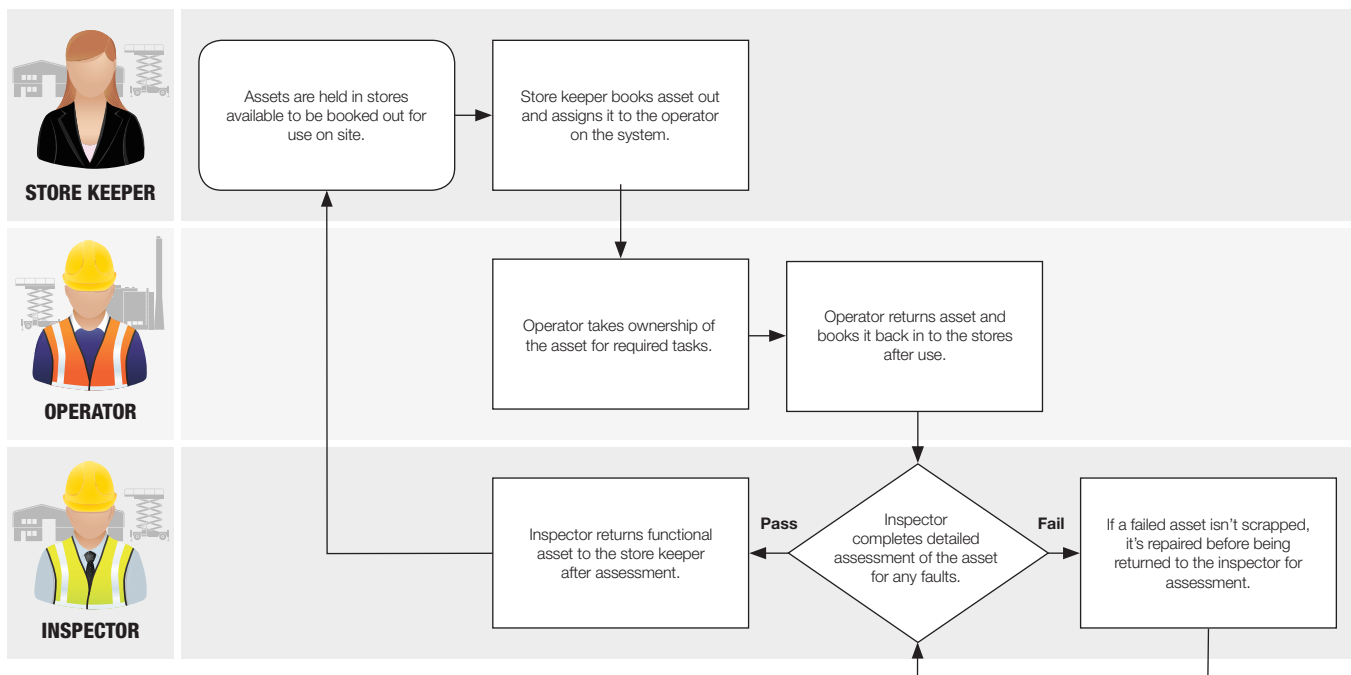


# Book in/book out

## Know where your equipment is

Managing and controlling who has been assigned each piece of equipment can quickly become an administrative nightmare. With the Safetrak Book In/Book Out module, equipment can be assigned to particular users electronically, with the ability to record the equipment's location.

- Provides date and time stamps for each asset booked out and booked in
- Tracks equipment accurately and avoids losing assets
- Increases employee accountability



## AVAILABLE ANYWHERE

Safetrak is a cloud-application which means it is accessible anywhere you have an internet connection. It also means data are synchronised for all sites so you can review the most recent equipment inspections anywhere, anytime. Logging in to Safetrak immediately connects you to the latest application version.



### Safetrak is:

- Available anywhere, anytime (with internet connection)
- Automatically updated
- Always synchronised
- Accessible without installation

# Safetrak solution components

A typical Safetrak package includes:

## USERS



Customers can define different access rights in the Safetrak user management section. Supervisor users can use all functions, while other users have specific access.

## EQUIPMENT MODULES



Modules determine the questions that are asked on the handheld and the reports that are generated. There are a number of standard off the shelf modules available or Safetrak can be created to your specific requirements.

## IDENTIFICATION TAGS



Tags will vary depending on the style and size of equipment being tagged. Tags are equipped with RFID or Barcode technology to:

- Uniquely identify assets.
- Prove attendance at asset location.
- Or to book an item out of stores

## HANDBELDS



Mobile handhelds are used by operators in the field to perform and record tasks such as inspections. We offer a variety of handhelds to fit your environment including rugged devices for industrial working conditions and intrinsically safe models.

## DATABASE



The Safetrak database holds all the records about assets and their individual histories. Various interfaces are available including administration client, booking system, web portal.

## REPORTS



Reports and modules can be customised and branded to your business requirements. Exporting options include CSV, PDF.



## REQUEST A DEMO

Request a free demonstration to find out how Safetrak could benefit your business. Demo's can be organised at your premises or via a remote on-screen web session.

- Provides date and time stamps for every book out and every book in
- Prompts for post-use checks when booked in
- Prompts for inspection planning when booked in
- Tracks equipment accurately and avoids losing assets
- Increases employee accountability



# Brady Corporation

Our mission is To Identify and Protect People, Products and Places



## Company Overview

BRADY was founded in 1914 in Eau Claire, Wisconsin, as W.H. BRADY Co., and renamed BRADY Corporation in 1998. The company began selling products internationally in 1947. In 1984, BRADY went public, with stock trading on the Nasdaq Stock Market, and in 1999, moved trading of its stock to the New York Stock Exchange, where it trades under the symbol BRC. The company's global headquarters is in Milwaukee, Wisconsin.

## Brady manufactures and markets:

- products for identification and safety applications such as signs and markers, printing systems and software to produce identification products on-site and on demand
- products for wire identification, including labelling materials and tools for wire and cable marking in the electrical, datacom and telecommunication markets
- high-performance identification products, including labels and signs that remain legible and highly adhesive even in harsh environments
- products that identify people and enhance security by ensuring the right persons are in the right places at the right time

## Operations - Some facts:

- 6500 employees around the world
- Operations in 29 countries
- Distribution in more than 100 countries through more than 4,400 distributor partners



### BRADY Africa

361 Olympic Duel,  
Northlands Business Park  
Newmarket Road  
Randburg  
Tel: +27 11 704 3295  
Fax: +27 86 501 7775

### BRADY Benelux

Industriepark C/3  
Lindestraat 20  
9240 Zele, Belgium  
Tel. +32 (0)52 45 78 11  
Fax +32 (0)52 45 78 12

### BRADY Central & Eastern Europe

Na Pántoch 18  
831 06 Bratislava, Slovakia  
Tel. +421 2 3300 4800  
Fax +421 2 3300 4801

### BRADY Denmark

Svendborgvej 39D  
5260 Odense S  
Tel. +45 66 14 44 00  
Fax +45 66 14 44 50

### BRADY France

Parc EURO CIT  
45, avenue de l'Europe  
59436 Roncq Cedex  
Tel. +33 (0) 3 20 76 94 48  
Fax +33 (0) 3 20 01 08 76

### BRADY Germany

Brady-Strabe 1  
63329 Egelsbach  
Tel. +49 (0) 6103 7598 660  
Fax +49 (0) 6103 7598 670

### BRADY Hungary

Puskás Tivadar u. 4.  
2040 Budaörs  
Tel. +36 23 500 275  
Fax +36 23 500 276

### BRADY Italy

Via Degli Abeti 44  
20064 Gorgonzola (MI)  
Tel: +39 02 26 00 00 22  
Fax: +39 02 25 75 351

### BRADY Middle East FZE

PO BOX 18015  
Jebel Ali, Dubai, UAE  
Tel. +971 4881 2524  
Fax +971 4881 3183

### BRADY Norway

Kjeller Vest 2  
2007 Kjeller  
Tel. +47 70 13 40 00  
Fax +47 70 13 40 01

### BRADY Romania

World Trade Center  
Piata Montreal, nr 10  
Intrarea F, Etajul 1, Birou 1.16,  
Sector 1,  
Bucharest, 011469  
Tel: +40 21 202 3032  
Fax: +40 21 202 3100

### BRADY Russia

"Kalanchevskaya Plaza" Business  
Center,  
Office 107, 16 building 1,  
Kalanchevskaya st.,  
Moscow, 129090  
Tel: +7 495 269 47 87

### BRADY Spain & Portugal

Av. Ventisquero de la condesa 13,  
local 17 y 18  
28035 Madrid, Spain  
Tel. +34 900 902 993  
Fax +34 900 902 994

### BRADY Sweden

Norgegatan 2  
164 32 Kista  
Tel. +46 (0) 8 590 057 30  
Fax +46 (0) 8 590 818 68

### BRADY Turkey

Esentepe Mahallesi, Harman Sokak,  
No: 4, Duran İş Merkezi, Kat:10,  
34394, Levent, Şişli  
Istanbul

Tel. +90 212 264 02 20 / 264 02 21  
Fax +90 212 270 83 19

### BRADY UK & Ireland

Wildmere Industrial Estate  
Banbury, Oxon – OX16 3JU, UK  
Tel. +44 (0) 1295 228 288  
Fax +44 (0) 1295 228 219

### BRADY WORLDWIDE

Australia .....	612-8717-6300
Brazil .....	55-11-3686-4720
Canada .....	1-800-263-6179
China (Beijing) .....	86-10-6788-7799
China (Shanghai) .....	86-21-6886-3666
China (Wuxi) .....	86-510-528-2222
Hong Kong .....	852-2359-3149
Japan .....	81-45-461-3600
Korea .....	82-2-861-8544
Latin America .....	1-414-540-5560
Malaysia .....	60-4-646-2700
Mexico .....	525-399-6963
New Zealand .....	61-2-8717-2200
Philippines .....	63-2-658-2077
Singapore .....	65-6477-7261
Taiwan .....	886-3-327-7788
Thailand .....	66-2-793-9200
USA .....	1-800-537-8791

© 2017 Brady Worldwide, Inc. All Rights Reserved.

Your distributor

