



Intuitive functionality meets industrial grade

# BRADY SCANNERS

HANDHELD & FIXED BARCODE SCANNERS



# SCANNING SOLUTIONS for every space

## Brady's full lineup of powerful scanning technology is engineered to seamlessly fit into any workflow

Eliminate challenges and meet the unique demands of any workplace with Brady's line of handheld and fixed scanners. No matter what scanner you choose, you'll be able to seamlessly integrate it into your unique workflow and skill level. From high-volume scanning to high-speed, high-accuracy data capture, our scanners can be tailored to your specific needs. And thanks to their rugged construction and advanced software support, you can trust that these scanners will continue to deliver exceptional results, day after day, in even the most demanding environments.

### Simplicity in every scan



#### Easily customized to your workflow

An intuitive interface that makes custom simple



#### Go from setup to first scan in seconds

Everything you need is right in the box



#### Industrial-grade rugged durability

Dependable and built to last



#### Do more with a variety of options

Everything from entry-level to advanced scanning solutions



▶ Learn more at [BradyID.com/scanners](https://BradyID.com/scanners) or scan to watch the overview video





# DESIGNED WITH YOU IN MIND

## Dependable scanning solutions for every task, every skill set, every time

Whether you're handling high-volume scanning in a fast-paced warehouse or performing simple data entry, our scanners are designed to deliver consistent, accurate results. With intuitive features that cater to everything from entry-level to advanced jobs, our scanners will seamlessly integrate into your workflow, no matter the task at hand or level of expertise.



### Scan with confidence

Learn more about how our advanced features can power your performance. See page 6.



### DISTRIBUTION

- ▶ Save data on-board scanner
- ▶ Real-time inventory capture
- ▶ Minimize misplacement of goods
- ▶ Accurately identify products



### PRODUCTION

- ▶ Customize scanner to fit workflow
- ▶ Step by step instructions
- ▶ Accurately fulfill orders
- ▶ Prevent costly rework



### WAREHOUSING

- ▶ On-board data parsing and editing
- ▶ Combine multiple labels into one
- ▶ Accurately recreate barcodes
- ▶ Intuitive interface



### MANUFACTURING

- ▶ No guessing, get confirmation
- ▶ Prevent costly errors
- ▶ Faster workflows
- ▶ Eliminate downstream costs



# Industrial design

# INTUITIVE

# FUNCTIONALITY

## Optimized features that drive speed and accuracy

Our lineup of scanners is loaded with cutting-edge features specifically designed to overcome common challenges and meet the diverse demands of any workplace environment. Say goodbye to time-consuming rescans and complex configurations. With features like these, you won't find anything but high-quality data capture and consistent, reliable performance so you can scan with confidence.

### DEPENDABLE SCANNING

Innovative Cortex Decoder Technology:

Near zero-miss  
**99.9%**  
reliability

All-day battery life:

Get up to  
**100K+**  
scans per charge

Scan damaged, distorted and dirty surfaces:

Wrapped or taped



Worn or dirty



Omnidirectional



### Proven Accuracy

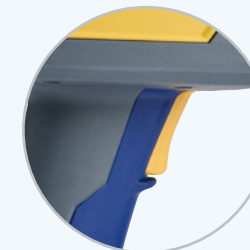
Read even the most complex barcodes



### HANDHELD FEATURES

### Easy-To-See Scan Status

Indicator lights avoid any confusion of received scans



### Rugged Grip

Ergonomically designed for an effortless grip



### Battery Access Latch

A quick-release latch makes it easy to swap batteries

### RUGGED DURABILITY



### IP65 Rated

Protected against moisture and dust intrusion



### Drop Resistant

Withstands multiple 8 ft. drops — MIL-STD-810G compliant



### Crush Resistant

Withstands crushes up to 250 lbs

### CONVENIENCE ON-THE-GO



### Instant Edits

Make updates on-the-spot using the keypad and screen



### Lanyard Clips

Keep your scanner readily accessible



### Contactless Charging\*

Simply grab the scanner and work all day on a single charge

\*wireless models



# HANDHELD VERSATILITY

Brady's series of handheld scanners is designed to meet and adapt to the demands of various industries. JavaScript capabilities offer enhanced flexibility, allowing you to customize your scanner to complete a series of functions completely unique to your workflow. Our proprietary Cortex Decoder technology powers the patented high-performance scan engine that reads at incredible lengths and speeds. The result? A line of handheld scanners that works the way you do — with the premium performance you expect from Brady.

## SCANNERS



### V2200 WIRED SCANNER

- ▶ Perfect for stationary work spaces
- ▶ Comes with six cable options
- ▶ Custom programmable
- ▶ Dual field optics

**Best Use:**  
Work stations



### V3200 WIRELESS SCANNER

- ▶ Large wireless range
- ▶ Full-shift battery life
- ▶ Batch mode
- ▶ Custom programmable

**Best Use:**  
On-the-go scanning



### V4500 KEYPAD & SCREEN

- ▶ Built-in keypad to easily swap functions
- ▶ Equipped with Bluetooth BLE 5.0
- ▶ Dynamic color LCD display
- ▶ Capture and save data for later

**Best Use:**  
Inventory management

## CRADLES



### V1300 STANDARD CRADLE

- ▶ "Find My Scanner" button
- ▶ Contactless charging
- ▶ Bluetooth connection indicator
- ▶ Communication and status indicator



### V1400 INDUSTRIAL PROTOCOL CRADLE

- ▶ Supports a wide range of industrial protocols
- ▶ Easy setup with Rockwell AOP
- ▶ LED status indicators
- ▶ Compatible with any Brady wireless scanner

#### Expand your capabilities

Learn how the V1400 Industrial Protocol Cradle can cut out extra work for your Brady wireless scanners. See page 12.



# Open it up. Power it on. **GET IT DONE**

## Start up in seconds. Do data differently.

Our high-performance handheld scanner series has everything you need to optimize your workflows and modernize your overall operations. All of our handheld scanners are highly capable and designed to be super simple to use — with the best customer support team in the industry help get your team up to speed in no time. Go from out of the box to your first scan in seconds. One configuration code and you're good to go!



**START UP  
IN SECONDS**



## Take the complexities out of configuration

We've designed configuration to be easy and straightforward with a web-based configuration tool. Sort and arrange data exactly how you want with the powerful data parsing feature. Get up and running quickly and maximize your productivity.

Select what  
you need for  
your workflow



Transfer to  
configure  
setup with  
one easy scan

## Programming doesn't have to be painful

We've made scanners that seamlessly fit your workflow — not the other way around. With the help of Brady's unrivaled tech support, you can change any setting on the scanner to suit your needs. For more advanced workflows, take advantage of our dynamic JavaScript platform.

- ▶ Batch mode
- ▶ Bluetooth
- ▶ Communication mode
- ▶ Custom terminal settings
- ▶ Data formatting
- ▶ Motion detection/  
continuous scan
- ▶ Smartphone screen  
reading enhancement
- ▶ DPM scanning  
enhancement
- ▶ Vibrate
- ▶ Volume
- ▶ Scan delay
- ▶ Symbology selection

## Get real help from real helpful humans with Brady Customer Support

Experts are standing by to assist when you need it. Keep your business moving with the most accommodating support in the industry.





# Advanced connectivity options for a **TRULY CONNECTED FACILITY**

## Quickly, simply and seamlessly connect the V1400 Industrial Protocol Cradle to PLCs and industrial networks

Thanks to a full suite of protocols, the V1400 Industrial Protocol Cradle gives your Brady wireless barcode scanner\* the ability to feed information to both your control systems and business systems (at the same time!) for the widest breadth of connectivity on the market.



### More Connectivity

Easily communicate with a PLC or PC via Ethernet



### Enhanced Productivity

Automate and optimize workflows



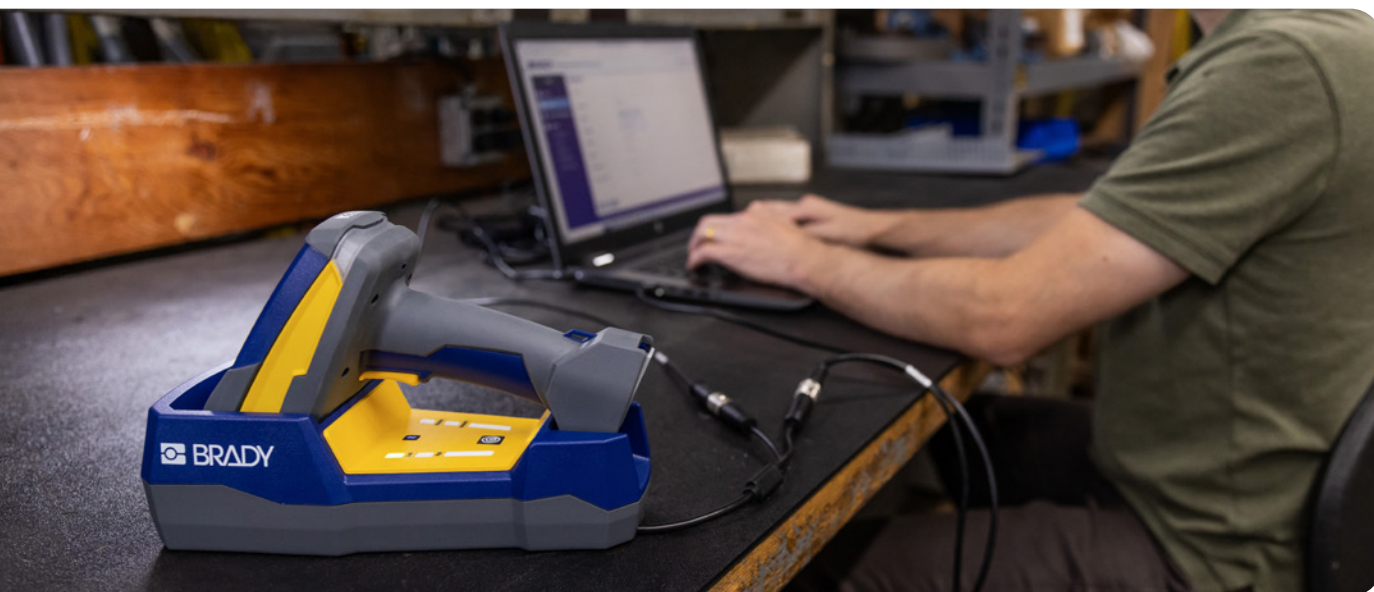
### Easy Setup

Simplify PLC connection with Rockwell AOP



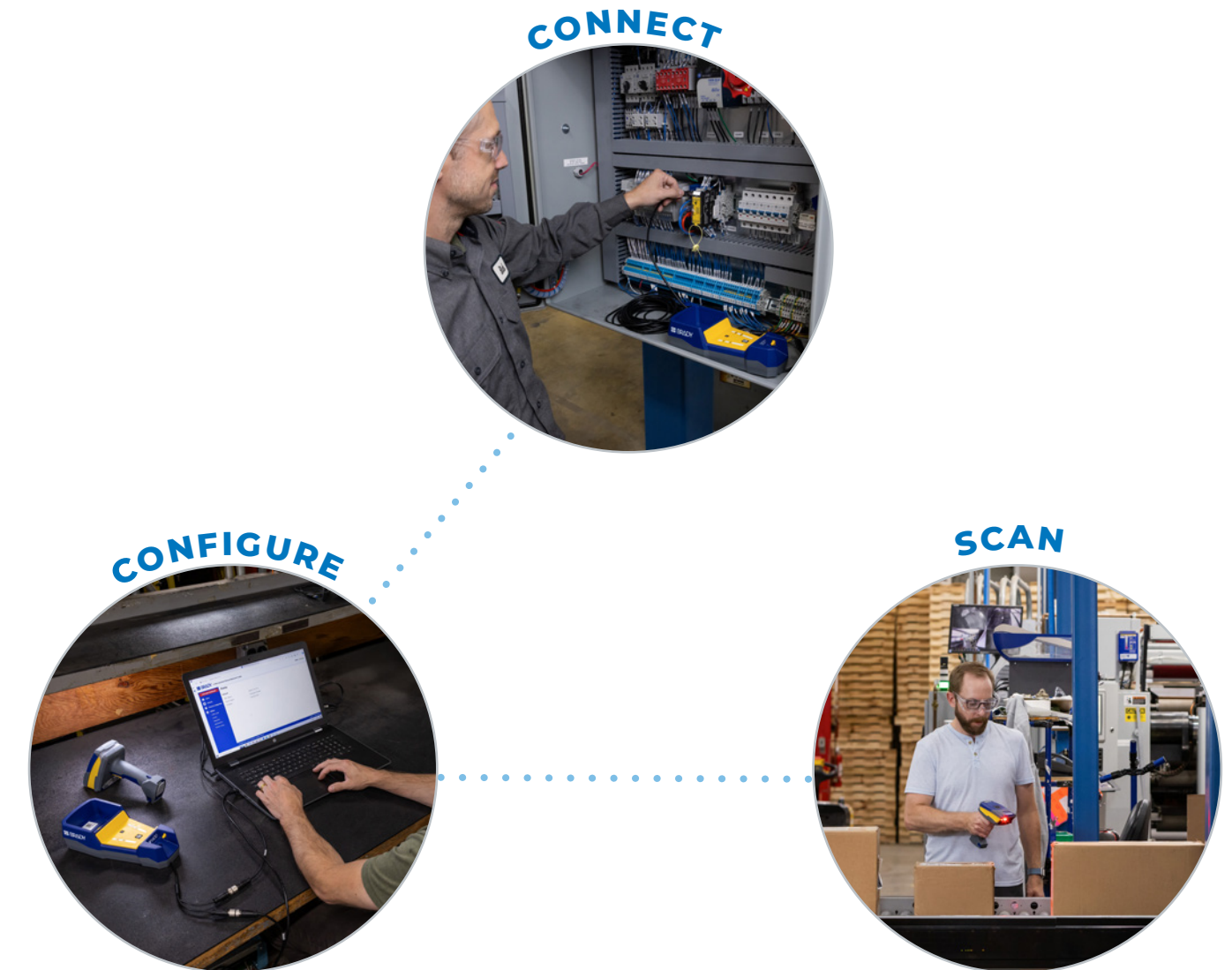
### All-in-One Solution

Seamlessly connect to a unique suite of protocols



## A Seamless Integration

With just three easy steps to get up and running, it's never been so easy to seamlessly connect your scanner to business systems, PLCs and other operational technologies.



## Well Connected

The V1400's unique suite of protocols offers MORE connectivity options than any other cradle on the market.

- ▶ Conformant EtherNet/IP and PROFINET device



**EtherNet/IP®**  
SIEMENS S7

**PROFINET**

**Allen-Bradley PCCC**  
by ROCKWELL AUTOMATION

**BACnet**

**OPC UA**

**MQTT**

**Modbus TCP/IP**

\*Cradle available for purchase with the V3200. Compatible with the V4500.



# Powerful scanning technology in our **FIXED SCANNER SERIES**

## Scan dirty, damaged & distorted barcodes with ease

Brady's fixed mount barcode scanners provide high-performance, hands-free scanning with zero-footprint applications. Designed to be quickly deployed without disrupting workflows, our fixed series seamlessly connects your operations to automate processes and keep work moving.



### Seamless Integration

Integrate with trigger sensors and rotary encoders



### Read a Variety of Codes

Configure multiple camera settings to scan several code types



### Distorted Barcode Scanning

Scan damaged, poorly printed and low contrast barcodes



### High Speed

Backed by global shutter camera technology



### Easy Connectivity

Connect to existing MES and PLC systems



### Durable

IP certified and engineered to have a long lifetime



## V6100 FIXED SCANNER

- ▶ Equipment integration
- ▶ Plug and play
- ▶ Compact, hands-free scanning
- ▶ Standard and high density options
- ▶ USB
- ▶ RS232 (5V, 24V)



## V6180 FIXED SCANNER

- ▶ High speed scanning
- ▶ DPM capable
- ▶ Barcode quality reporting
- ▶ Straight or right angle cable options
- ▶ Power over Ethernet (PoE)
- ▶ Ethernet/IP for network integration and PLC communication



## V7000 FIXED SCANNER

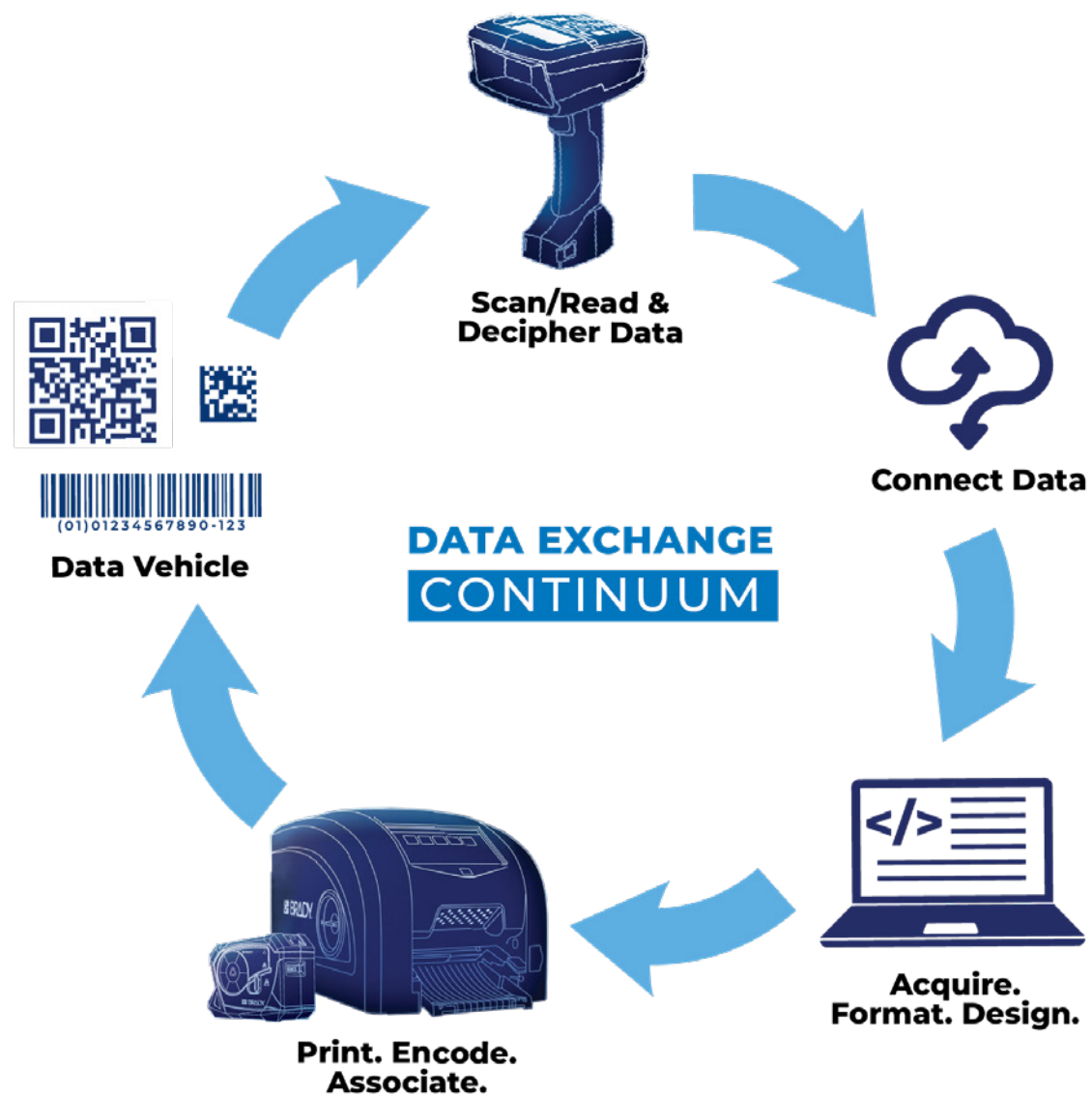
- ▶ Long read range
- ▶ DPM capable
- ▶ Tilt correction
- ▶ Auto focus
- ▶ Barcode quality reporting
- ▶ Digital filters
- ▶ Multi-unit connection for array scanning



# THE SCAN IS JUST THE START

## Brady's intelligent ecosystem offers connected solutions to modernize your operations with ease

Brady's digital data capture, exchange and print solutions help you automate your workflows and scan past the competition.



## BRADY PRINTERS | High-performance portable and benchtop printing



► Portable Printers: Get the rugged durability you need so you can label on the go.



► Product, Wire and Lab ID Printers: Powerful production for precise industrial printing.

## BRADY SOFTWARE | Make premium labels in no time

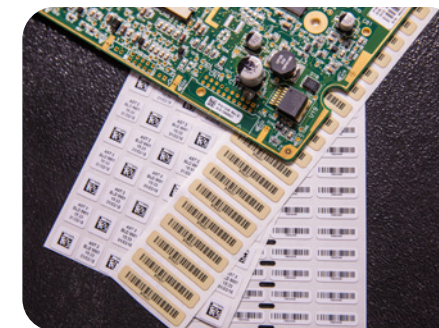


► Unleash the full potential of your Brady label printer with our label creation software.



► Design. Preview. Print. Any way you choose. Right from your phone.

## BRADY MATERIALS | Always jobsite-ready to take on the task at hand



► MANUFACTURING



► ASSET ID



► WAREHOUSE



# Check out our scanners side-by-side to **FIND THE RIGHT MATCH**

Explore the best options in scanning technology to see how the features stack up. No matter the industry or environment your work demands — get the right scanner to get the job done right.

## HANDHELD SCANNER COMPARISON



|                                | V2200                | V3200    | V4500    |
|--------------------------------|----------------------|----------|----------|
|                                | Wired                | Wireless |          |
| IP Rating                      | 65                   |          |          |
| Drop Resistance                | Multiple 8 ft. drops |          |          |
| Crush Resistance               | 250 lbs              |          |          |
| Tumble Resistance (1m)         | 2,500                |          |          |
| Illumination                   | Red                  |          |          |
| Range (40 mil Code 128)        | 36.3 in.             |          |          |
| Range (10 mil Data Matrix)     | 6.7 in.              |          |          |
| Custom Programming             | JavaScript           |          |          |
| Battery Life (scans)           | Unlimited            | 100,000+ | 75,000+  |
| Bluetooth Range (unobstructed) | n/a                  | 300 ft.+ | 300 ft.+ |
| Industrial Ethernet Option     |                      | Yes      | Yes      |
| Batch Mode                     |                      | Yes      | Yes      |
| Screen & Keypad                |                      |          | Yes      |

## FIXED SCANNER COMPARISON



|                        | V6100                  | V6180                   | V7000    |
|------------------------|------------------------|-------------------------|----------|
| Resolution             | 0.35M                  | 1.2M                    | 5.0M     |
| Illumination           | White (SD) or Red (HD) | White and Red (DPM)     | White    |
| Cable Orientation      | Straight               | Straight or Right Angle | Straight |
| Cable Options          | USB, RS232             | Ethernet                | Ethernet |
| Max Speed (mph)        | 0.9                    | 10                      | 2.5      |
| Read Range Range (in.) | 1.6-7.7                | 1-6.9                   | 5.9-117  |
| IP Rating              | 65                     | 67                      | 67       |
| Power over Ethernet    |                        | Yes                     |          |
| DPM                    |                        | Yes                     | Yes      |
| Code Quality Check     |                        | Yes                     | Yes      |
| EtherNet/IP (PLC)      |                        | Yes                     | Yes      |
| Varifocal              |                        |                         | Yes      |
| Autofocus              |                        |                         | Yes      |
| Zoom                   |                        |                         | Yes      |

## SCANNER CRADLE COMPARISON



|               | V1300          | V1400                               |
|---------------|----------------|-------------------------------------|
|               | Standard       | Industrial Protocol                 |
| Cable Options | USB-A & RS-232 | M12 & RJ45                          |
| Communication | Serial         | OT & IT Protocols                   |
| Device Type   | Input Device   | Networked Device                    |
| Power Type    | AC Adapter     | AC Adapter or Flying Leads          |
| LED Status    | Scanner        | Scanner, Link, App, Module, Network |

**LEARN MORE AT [BRADYID.COM](https://bradyid.com) OR CONTACT YOUR LOCAL BRADY REP.**





We make products that make the world a safer and smarter place. From the depths of the ocean to outer space, from the factory floor to the delivery room — **we're just about everywhere you look.**

► For more information or to learn more about our innovative products, visit [BradyID.com](http://BradyID.com) or call 1-888-272-3946.

USA  
Customer Service: 1-888-272-3946  
[BradyID.com](http://BradyID.com)

Canada  
Customer Service: 1-800-263-6179  
[BradyCanada.ca](http://BradyCanada.ca)

Mexico  
Customer Service: 1-800-262-7777  
Inside Sales: 1-800-262-7777 ext 177  
[BradyID.com.mx](http://BradyID.com.mx)



Y7210363 MS7210363