



B-473 Electrostatic Dissipative Polyester Material

Color: White **Finish: Gloss**

White polyester with glossy finish used for printed circuit board and electronic component post-process labeling. Features a permanent static dissipative adhesive and a static dissipative release liner. Surface resistivity values in the recommended range for dissipative ESD packing materials. Also meets requirements of EIA-541 "Packaging Material Standards for ESD Sensitive Items."

Performance Attributes: 

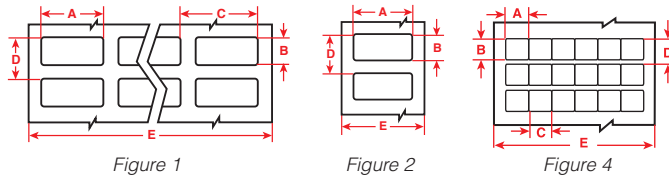
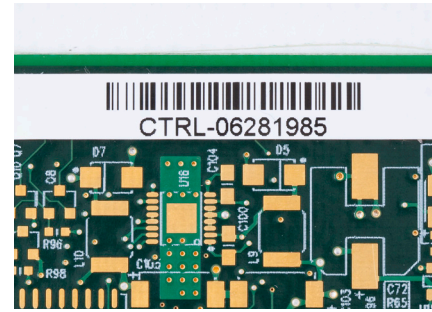


Diagram	Catalog #	Material	Color	Label Width A Inch (mm)	Label Height B Inch (mm)	Horiz. Repeat C Inch (mm)	Vert. Repeat D Inch (mm)	Web Width E Inch (mm)	Labels Per Row	Labels Per Pkg	Rec. Ribbon
Fig. 4	THT-11-473-10	Polyester	White	0.250 (6.4)	0.250 (6.4)	0.250 (6.4)	0.375 (9.5)	3.200 (81.3)	12	10,000	R6002
Fig. 1	THT-70-473-20	Polyester	White	0.250 (6.4)	0.250 (6.4)	0.320 (8.1)	0.350 (8.9)	2.370 (60.2)	7	20,000	R6000
Fig. 1	THT-38-473-10	Polyester	White	0.375 (9.5)	0.375 (9.5)	0.437 (11.1)	0.475 (12.1)	3.200 (81.3)	7	10,000	R6002
Fig. 1	THT-12-473-10	Polyester	White	0.500 (12.7)	0.437 (11.1)	0.662 (16.8)	0.537 (13.6)	3.350 (85.1)	5	10,000	R6002
Fig. 1	THT-36-473-10	Polyester	White	0.500 (12.7)	0.200 (5.1)	0.625 (15.9)	0.300 (7.6)	3.200 (81.3)	5	10,000	R6002
Fig. 1	THT-96-473-10	Polyester	White	0.500 (12.7)	0.275 (7.0)	0.600 (15.2)	0.375 (9.5)	2.500 (63.5)	4	10,000	R6002
Fig. 2	THT-97-473-10	Polyester	White	0.500 (12.7)	0.200 (5.1)	-	0.300 (7.6)	0.700 (17.8)	1	10,000	R6011
Fig. 1	THT-14-473-10	Polyester	White	0.650 (16.5)	0.200 (5.1)	0.700 (17.8)	0.300 (7.6)	2.950 (74.9)	4	10,000	R6002
Fig. 2	THT-47-473-10	Polyester	White	0.650 (16.5)	0.200 (5.1)	-	0.300 (7.6)	0.850 (21.6)	1	10,000	R6011
Fig. 1	THT-57-473-10	Polyester	White	0.700 (17.8)	0.375 (9.5)	0.800 (20.3)	0.475 (12.1)	3.350 (85.1)	4	10,000	R6007
Fig. 1	THT-1-473-10	Polyester	White	0.750 (19.1)	0.250 (6.4)	0.800 (20.3)	0.350 (8.9)	3.350 (85.1)	4	10,000	R6007
Fig. 2	THT-46-473-10	Polyester	White	0.750 (19.1)	0.250 (6.4)	-	0.350 (8.9)	0.950 (24.1)	1	10,000	R6006
Fig. 1	THT-2-473-10	Polyester	White	0.900 (22.9)	0.250 (6.4)	1.125 (28.6)	0.350 (8.9)	3.350 (85.1)	3	10,000	R6007
Fig. 2	THT-49-473-10	Polyester	White	0.900 (22.9)	0.250 (6.4)	-	0.350 (8.9)	1.100 (27.9)	1	10,000	R6006
Fig. 2	THT-103-473-10	Polyester	White	1.000 (25.4)	0.250 (6.4)	-	0.350 (8.9)	1.200 (30.5)	1	10,000	R6006
Fig. 1	THT-3-473-10	Polyester	White	1.000 (25.4)	0.375 (9.5)	1.075 (27.3)	0.475 (12.1)	3.350 (85.1)	3	10,000	R6007
Fig. 1	THT-5-473-10	Polyester	White	1.000 (25.4)	0.500 (12.7)	1.075 (27.3)	0.600 (15.2)	3.350 (85.1)	3	10,000	R6007
Fig. 2	THT-58-473-10	Polyester	White	1.000 (25.4)	0.375 (9.5)	-	0.475 (12.1)	1.200 (30.5)	1	10,000	R6006
Fig. 2	THT-59-473-10	Polyester	White	1.000 (25.4)	0.500 (12.7)	-	0.600 (15.2)	1.200 (30.5)	1	10,000	R6006
Fig. 1	THT-13-473-10	Polyester	White	1.250 (31.8)	0.250 (6.4)	1.300 (33.0)	0.375 (9.5)	2.750 (69.9)	2	10,000	R6002
Fig. 2	THT-43-473-10	Polyester	White	1.250 (31.8)	0.250 (6.4)	-	0.350 (8.9)	1.450 (36.8)	1	10,000	R6006
Fig. 1	THT-4-473-10	Polyester	White	1.500 (38.1)	0.250 (6.4)	1.650 (41.9)	0.350 (8.9)	3.350 (85.1)	2	10,000	R6007
Fig. 2	THT-45-473-10	Polyester	White	1.500 (38.1)	0.250 (6.4)	-	0.350 (8.9)	1.700 (43.2)	1	10,000	R6000
Fig. 2	THT-15-473-2.5	Polyester	White	2.000 (50.8)	0.250 (6.4)	-	0.375 (9.5)	2.200 (55.9)	1	2,500	R6000
Fig. 2	THT-48-473-10	Polyester	White	2.000 (50.8)	0.250 (6.4)	-	0.350 (8.9)	2.200 (55.9)	1	10,000	R6000