

www.BradyID.com/link360

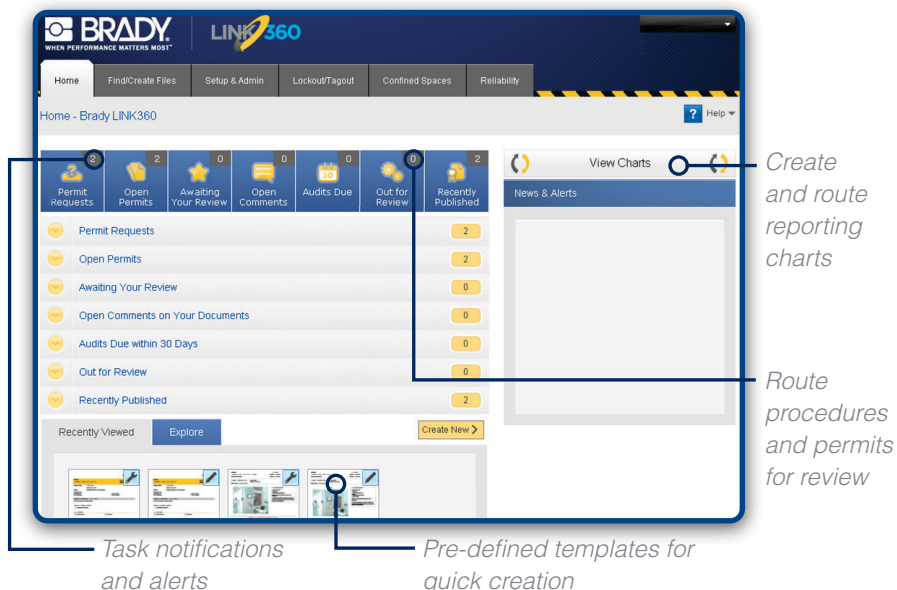
Use LINK360™ software to manage your visual workplace.

Brady LINK360 helps our customers not only just get compliant and productive, but more importantly stay compliant and productive

Discover the LINK360™ Software Solution Advantage

Organizations continually perform maintenance and repairs on equipment, creating a need to keep corresponding visuals updated to reflect changes. These visuals play an important role in helping keep employees safe, equipment running at optimal levels, and eliminate costly downtime.

LINK360™ software gives managers a complete view of the activities that are performed to create, use, and update visual information found on and around equipment and machines – whether at a single location or across many. Because the software is cloud-based, this unique solution is available anywhere you access the internet.



Pre-defined templates and the ability to easily add users from any site in your company create a comprehensive yet easy to use solution to manage your Lockout/Tagout, Reliability and Confined Space activities.



The **Lockout/Tagout Module** focuses on creating and maintaining a safe working environment with tools to help lock out hazardous energy sources. By accessing this center users can:

- Manage Lockout/Tagout programs when performing maintenance on machinery.
- Create visually instructive safety procedures, tags, and energy source labels for printing.
- Get compliance assistance with OSHA 1910.147 for lockout of hazardous energy sources.
- Free mobile app for iOS, mobile phones and tablets.



The **Reliability Module** assists in maintaining equipment performance levels through tools to streamline the regular equipment check process. By accessing this center users can:

- Manage the creation of visually instructive maintenance procedures that assist operators, engineers, and technicians in maintaining machine equipment performance levels.
- Control access to who may view, edit, and create templates and procedures.



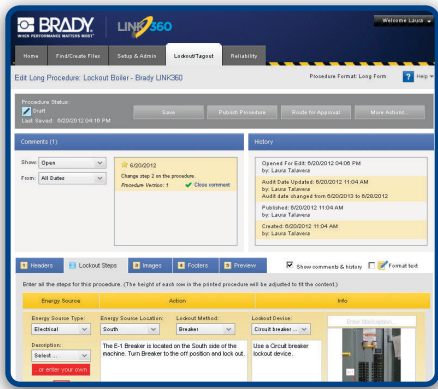
LINK360's **Confined Spaces Module** allows users to assemble assessments, create permits, and track history for confined space permitting.

- Identify confined space hazards and classify a space as a permit required confined space.
- Entrants are able to fill out permitting requests online and route them for permission to enter.
- Permitting history is logged for future audits and reporting.



Download now!

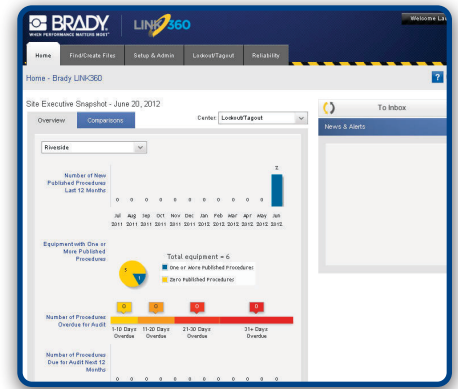
Download the iOS app from the iTunes Store®



1. Design



2. Post



3. Monitor

LINK360™ cloud-based software was created to answer the most pressing visual information needs. Faced with the task of handling visual information across multiple locations, companies needed a way to take the management of equipment visuals to the next level by closing the loop on scalability and sustainability.

Achieve compliance and productivity goals

- Quickly and easily correct inaccuracies, while maintaining a safe working environment for employees and an optimal level of equipment protection.
- Eliminate confusing visuals, comprehension, and language translation issues by creating clear, concise, and easy-to-follow signage in minutes.

Maintain consistency and scalability

- Grant permissions and rights for viewing, editing and creating templates and procedures for standardized use across all locations.
- Stop the use of varying formats, symbols and languages for equipment visuals across the organization for clear communication.

Sustain and improve performance levels

- As changes occur with the equipment, keep visuals up-to-date through the use of audit alerts, notifications, and reports.
- Monitor, measure, and improve effectiveness of procedures with ease.

Secure access to your company's data

- Secured Socket Layer (SSL) encryption is in place for data transmission.
- Set user defined permissions that restrict or allow access to sites, areas, and equipment.

Learn more!

Visit www.BradyID.com/LINK360 today to watch a video or to request a demo.



Discover the LINK360™ Software Service Solutions



With a LINK360™ software purchase, customers get assistance with the implementation process from our **Professional Services Team**, including:

- Software setup and training
- Equipment labeling
- Software custom templates
- Procedure conversion
- Project planning
- Help desk support



Brady's **Lean & Compliance Consulting Services** are available separately and include turnkey solutions for auditing and installation, backed by our knowledge of best practices in:

- Procedure writing services
- Safety audit and assessment services
- Visual management workshops



To request a demo visit
www.BradyID.com/LINK360



Scan the QR code for more information

Learn more now about the LINK360™ Software at www.BradyID.com/LINK360.

USA

Customer Service: 1-888-272-3946

Inside Sales: 1-888-311-0775

www.BradyID.com

Canada

Customer Service: 1-800-263-6179

www.BradyCanada.ca

Mexico

1-800-262-7777

Inside Sales: 1-800-262-7777 ext 177

www.BradyLatinAmerica.com



Y2473958 MS2473958