



Product Comparison Sheet

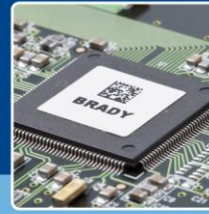
LabelMark™ 5 - Features by Edition

Ease-of-Use Tools Features

Feature	LabelMark 5 Professional/Demo	LabelMark 5 Standard	LabelMark 4
Manage Import Data Schemes	X		
Manage Serialisation Schemes	X		
Manage Part Printer Driver Association	X	X	
Manage Custom Parts	X	X	X
Export/Import custom part labels	X	X	
Error Checking Utility	X	X	
Online Auto Updates	X	X	
Label Object Property Window	X	X	
Multiple Tabbed View	X	X	
Manage Favourites list	X	X	X
Manage Multi-label file Jobs	X		X

Label Printing Features

Feature	LabelMark 5 Professional/Demo	LabelMark 5 Standard	LabelMark 4
Insert/Edit an AutoCAD Object	X		
Designing and Printing Labels from MS Excel	X		
Designing and Printing Labels from MS Visio	X		
Designing and Printing Labels from AutoCAD	X		
Set Print Copies function from Design Editor	X		
Print Selected labels in Design Editor	X	X	
Multiple Label file Simultaneous Batch Printing	X	X	X
Set print range copies	X	X	X
Set label copies	X	X	X
Save print range/label copies settings with label file to avoid resetting these each time the file is opened.	X	X	X
Bi-directional printing (only specific Brady printers)	X	X	X
Label Saver Options	X	X	X
Dedicated Label and Printer Printing	X	X	X



Product Comparison Sheet

LabelMark™ 5 - Features by Edition

Label Design Features

Feature	LabelMark 5 Professional/Demo	LabelMark 5 Standard	LabelMark 4
Single Click Importing	X		
Single Click Serialisation	X		
Electrical Wizards	X		
Wire Harness Sub-Wizard	X		
Control Panel Sub-Wizard	X		
110 Block Wizard	X		
Laboratory Wizard	X		
Create New Based on selected labels	X	X	
Multi-label Display	X	X	X
Multi-Label Editing	X	X	X
Single label View editing			
Edit/Use a Label File	X	X	X
Edit/Use a Template files	X	X	X
Wiremarker Labels (copy text on multiple lines)	X	X	X
Fixed line mode design	X	X	X
Free form mode design	X	X	X
Command Multiplier for en masse label copies	X	X	X
Insert Serialised Data (Quick Advanced modes)	X	X	X
Insert External Data (Quick Advanced modes)	X	X	X
Insert Date/Time Data	X	X	X
Insert/Edit an Image Object	X	X	X
Insert/Edit a Text Object	X	X	X
Insert/Edit a Rectangle/Line Object	X	X	X
Insert/Edit a Barcode Object	X	X	X
Flip-Flop data on existing label	X	X	X
Insert new label with Flip-Flop data	X	X	X
Graphics Symbol Library	X	X	X