



Safety Software and Services

Visualise and Manage your Safety Procedures



LINK360®
SAFETY SOFTWARE

Visualise and Manage your Safety Procedures

Information management is one of the biggest challenges in maintaining a safe facility. Countless safety related documents and procedures need regular updates and reviews. Otherwise, confined space permits, Lockout/Tagout procedures and policies quickly become outdated.

To keep safety procedures impactful and relevant, Brady offers services and software that help visualise and manage safety procedures, even across borders in multiple plants.



Services

Procedure Creation

Writing compliant Lockout/Tagout procedures can be time consuming and cumbersome, especially with limited internal resources. Our Lockout/Tagout Procedure Writing service goes beyond compliance and is based on worldwide best practices.

- Plant needs and equipment requirements evaluation
- Machine-specific, visually instructive procedure creation
- Maintaining the programme in-house with Link360



Lockout/Tagout Complete Service

The Lockout/Tagout Complete Service greatly supports companies that want to implement Lockout/Tagout. Tailored to the needs and requirements of specific plants, the Lockout/Tagout Complete Service not only offers Procedure Creation but supports you all the way, from pre-audit until implementation. The Lockout/Tagout Complete Service can include:

- procedure auditing
- procedure creation
- procedure field communication
- energy source tag installation
- procedure training
- Link360 training



Lockout/Tagout Assistance Service

Typically a one day service to support your Lockout/Tagout needs, the Lockout/Tagout Assistance Service can include one or more of the services offered in the Lockout/Tagout Complete Service package.



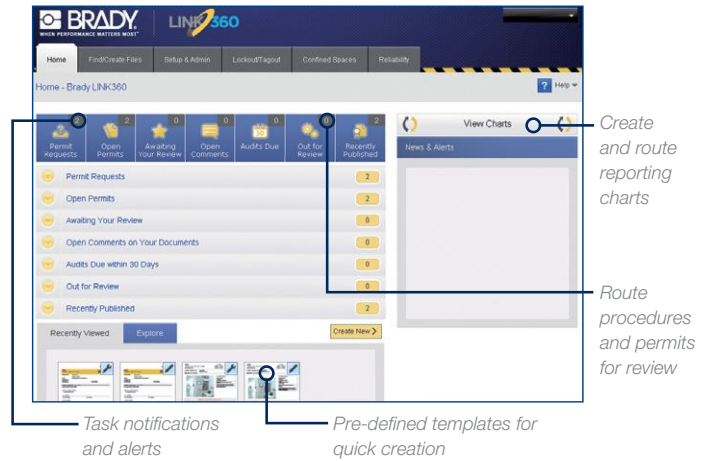
Discover the LINK360™ Software Solution Advantage

LINK360™ Software is the first software to give you a complete view of the activities associated with creating, reviewing and updating visual information.

Available in desktop or cloud versions, this software provides an easy way to keep your safety procedures accurate, compliant and sustainable – both in your facility and across multiple locations.

Discover the LINK360™ Software Modules:

Pre-defined templates and the ability to easily add users from any site in your company, create a comprehensive yet easy to use solution to manage your Lockout/Tagout, Reliability and Confined Space activities.



The **Lockout/Tagout Module** focuses on creating and maintaining a safe working environment with tools to help lock out hazardous energy sources. By accessing this module users can:

- Manage Lockout/Tagout programmes to perform maintenance on machinery.
- Create visually instructive safety procedures, tags, and energy source labels for printing.
- Meet regulatory requirements and industry standards on lockout of hazardous energy sources.
- Free mobile app for iOS or Android, mobile phones and tablets.



The **Reliability Module** provides tools to streamline regular equipment checks. By accessing this module users can:

- Manage the creation of visually instructive maintenance procedures that assist operators, engineers, and technicians in maintaining machine equipment performance levels.
- Control access to who may view, edit, and create templates and procedures.
- Free mobile app for iOS or Android, mobile phones and tablets.



The **Confined Spaces Module** allows users to compile assessments, create permits, and track history for confined space permitting.

- Identify confined space hazards and classify a space as a 'permit required' confined space.
- Entrants are able to fill out permission requests online for approval.
- Permission history is logged for future audits and reporting.

Download now!




iOS app
Android app.

LINK360 cloud-based answers the most pressing visual information needs. Faced with the task of handling visual information across multiple locations, companies need a way to take the management of equipment visuals to the next level by closing the loop on scalability and sustainability.



1. Design



2. Post



3. Monitor

Africa

Randburg, South Africa
 Tel.: +27 11 704 3295
 Email: africa@bradycorp.com

Benelux

Zele, Belgium
 Tel.: +32 (0) 52 45 78 11
 Email: benelux@bradycorp.com

Central & Eastern Europe

Bratislava, Slovakia
 Tel.: +421 2 3300 4800
 Email: central_europe@bradycorp.com

Denmark

Odense
 Tel.: +45 66 14 44 00
 Email: denmark@bradycorp.com

France

Roncq
 Tel.: +33 (0) 3 20 76 94 48
 Email: france@bradycorp.com

Germany, Austria & Switzerland

Egelsbach, Germany
 Tel.: +49 (0) 6103 7598 660
 Email: germany@bradycorp.com

Hungary

Budaörs
 Tel.: +36 23 500 275
 Email: central_europe@bradycorp.com

Italy

Gorgonzola
 Tel.: +39 02 26 00 00 22
 Email: italy@bradycorp.com

Middle East FZE

Dubai, UAE
 Tel.: +971 4881 2524
 Email: me@bradycorp.com

Norway

Kjeller
 Tel.: +47 70 13 40 00
 Email: norway@bradycorp.com

Romania

Bucharest
 Tel.: +40 21 202 3032
 Email: central_europe@bradycorp.com

Russia

Moscow
 Tel.: +7 495 269 47 87
 Email: central_europe@bradycorp.com

Spain & Portugal

Madrid, Spain
 Tel.: +34 900 902 993
 Email: spain@bradycorp.com,
 portugal@bradycorp.com

Sweden, Finland, Baltic states

Kista, Sweden
 Tel.: +46 (0) 8 590 057 30
 Email: sweden@bradyeurope.com

Turkey

Istanbul
 Tel.: +90 212 264 02 20 / 264 02 21
 Email: turkey@bradycorp.com

UK & Ireland

Banbury, UK
 Tel.: +44 (0) 1295 228 288
 Email: uk@bradycorp.com

Our mission is to identify and protect people, products and places



To help minimise our impact on the environment, Brady limits its number of reprints.

Updated versions are always available for download on www.bradyeurope.com.

 Search for: EUR-M-745-EN



Y3809247

Your distributor

28/07/2020