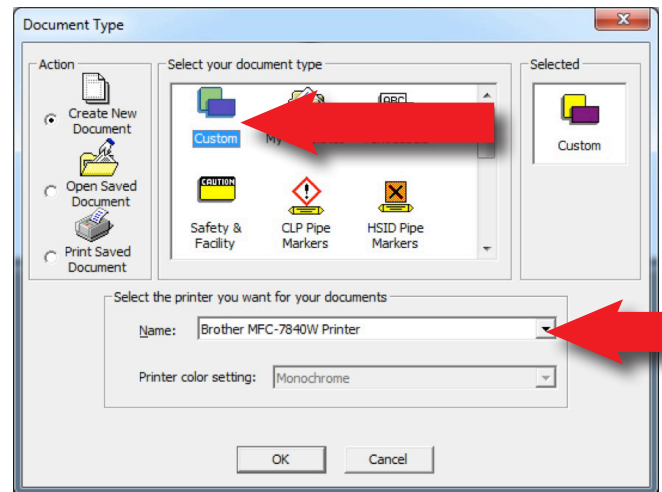


Batch print from MarkWare™ with HJET supplies

1. Create a blank label to use as a placeholder for used labels on the HJET supply.

- Select a sheet fed printer.
- Select the "Custom" Application.
- Select the appropriate media size (The blank label size MUST match the size of labels. Mixing and matching sizes in a batch print will result in undesirable output).
- Once the appropriate HJET supply is chosen, in the main menu choose File » Save As
- In the "Document name" field, enter the name of the template. "HJETName-Blank" is a recommendation. For example, for HJET35, "HJET35-Blank"



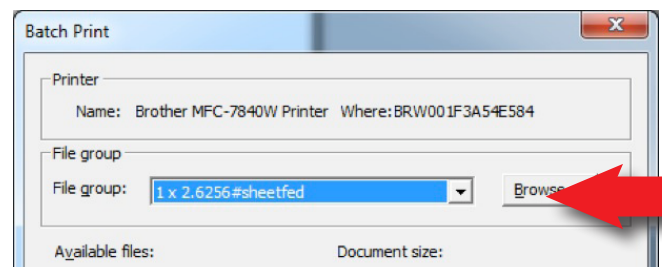
b. Select the "Custom" Application.

2. Create desired labels.

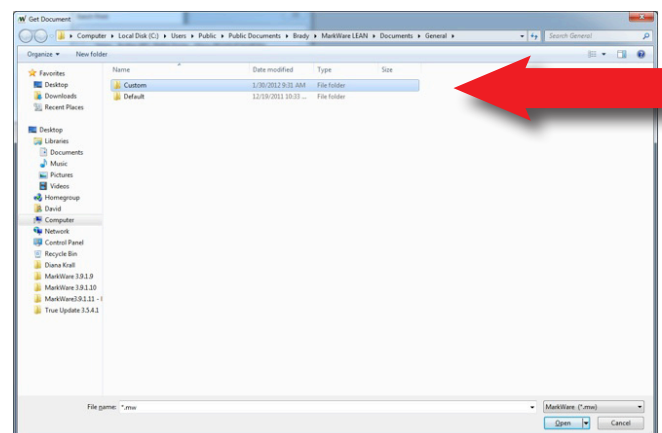
- Select a sheet fed printer.
- Select the "Custom" Application.
- Select the appropriate media size (The blank label size MUST match the size of labels. Mixing and matching sizes in a batch print will result in undesirable output).
- Add desired objects to label.
- Save the label by selecting File » Save As in the main menu.
- In the "Document name" field, enter the name of the template.
- Repeat for desired labels.

3. Creating a Batch Print with multiple labels.

- From the main menu choose File » Batch Print.
- In the Dialog box, select the "Browse" button.
- A standard windows explorer dialog will appear, Select the "Custom" directory since this is the default location for saved labels. If the user has placed the labels in a different directory, browse out to that location.
- Select the desired label by double clicking the Name. This will add the label. To the Batch print (The blank label size MUST match the size of labels. Mixing and matching sizes in a batch print will result in undesirable output).
- Add desired objects to label.
- Do this for all desired labels.



b. In the Dialog box, select the "Browse" button.



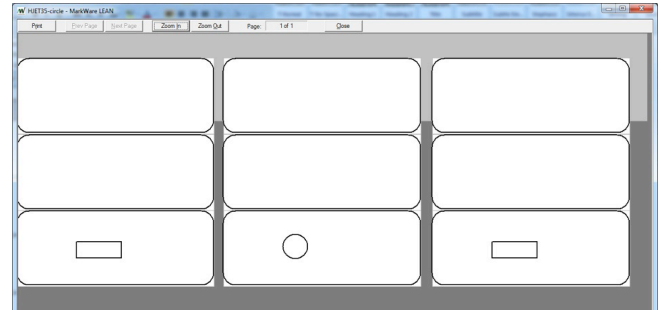
c. A standard windows explorer dialog will appear, Select the "Custom" directory.

3. Creating a Batch Print with multiple labels continued...

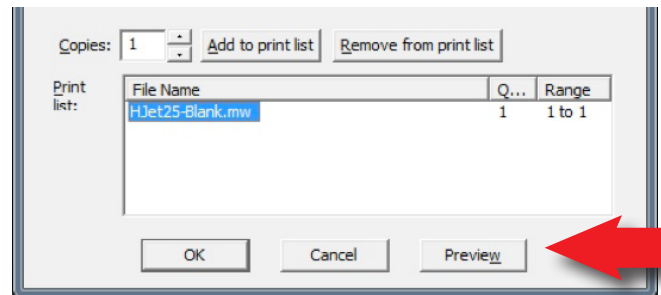
- g. The labels will be lined up from left to right and then up to down.
- h. If the User has a previously used supply with label already removed, they can insert the created placeholder blank labels. For example, if the user has used the first six labels for an HJET 35 supply, they can insert 6 blank labels and then choose their desired labels for print.
- i. To Print Preview the output before printing, select the "Preview" button.
- j. To print the batch, select the "OK" button.



g. The labels will be lined up from left to right and then up to down.



h. If the User has a previously used supply with label already removed, they can insert the created placeholder blank labels.



i. To Print Preview the output before printing, select the "Preview" button.



j. To print the batch, select the "OK" button.

USA
Customer Service: 1-888-272-3946
Inside Sales: 1-888-311-0775
www.BradyID.com

Canada
Customer Service: 1-800-263-6179
www.BradyCanada.ca

Mexico
Customer Service: 1-800-262-7777
Inside Sales: 1-800-262-7777 ext 177
www.BradyLatinAmerica.com