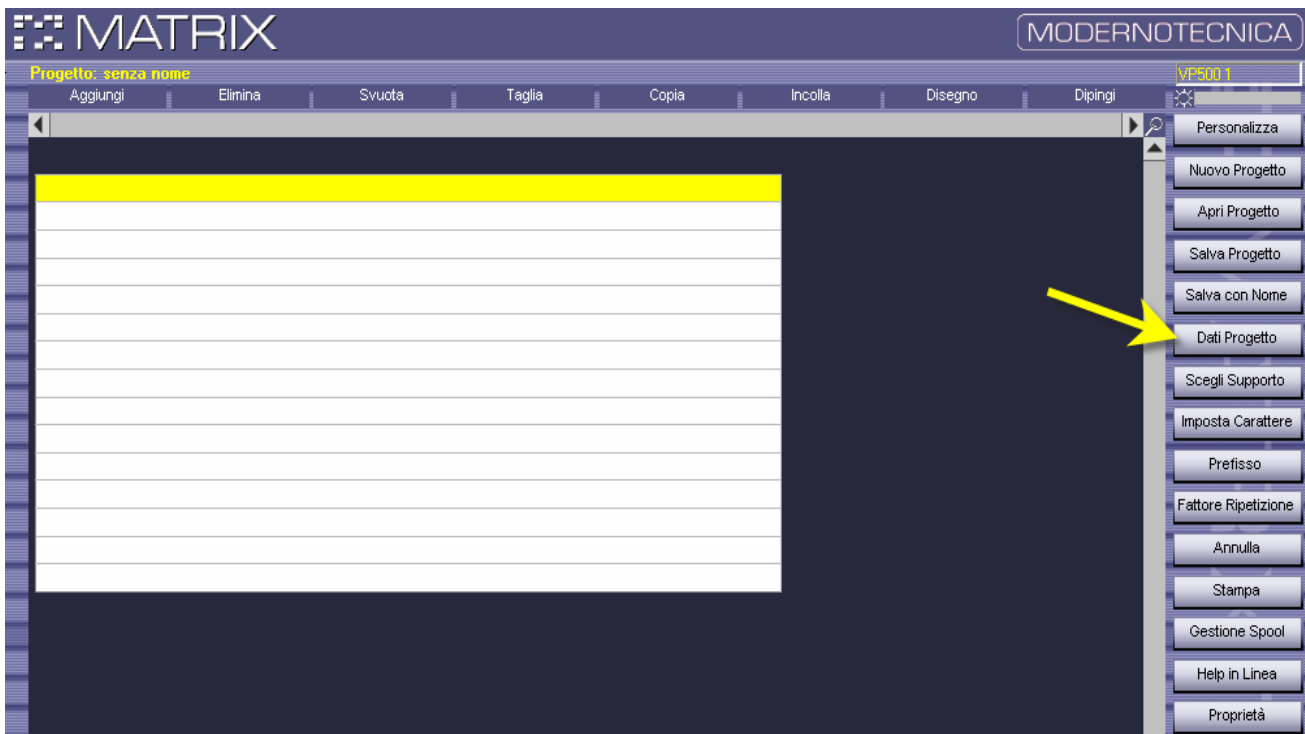
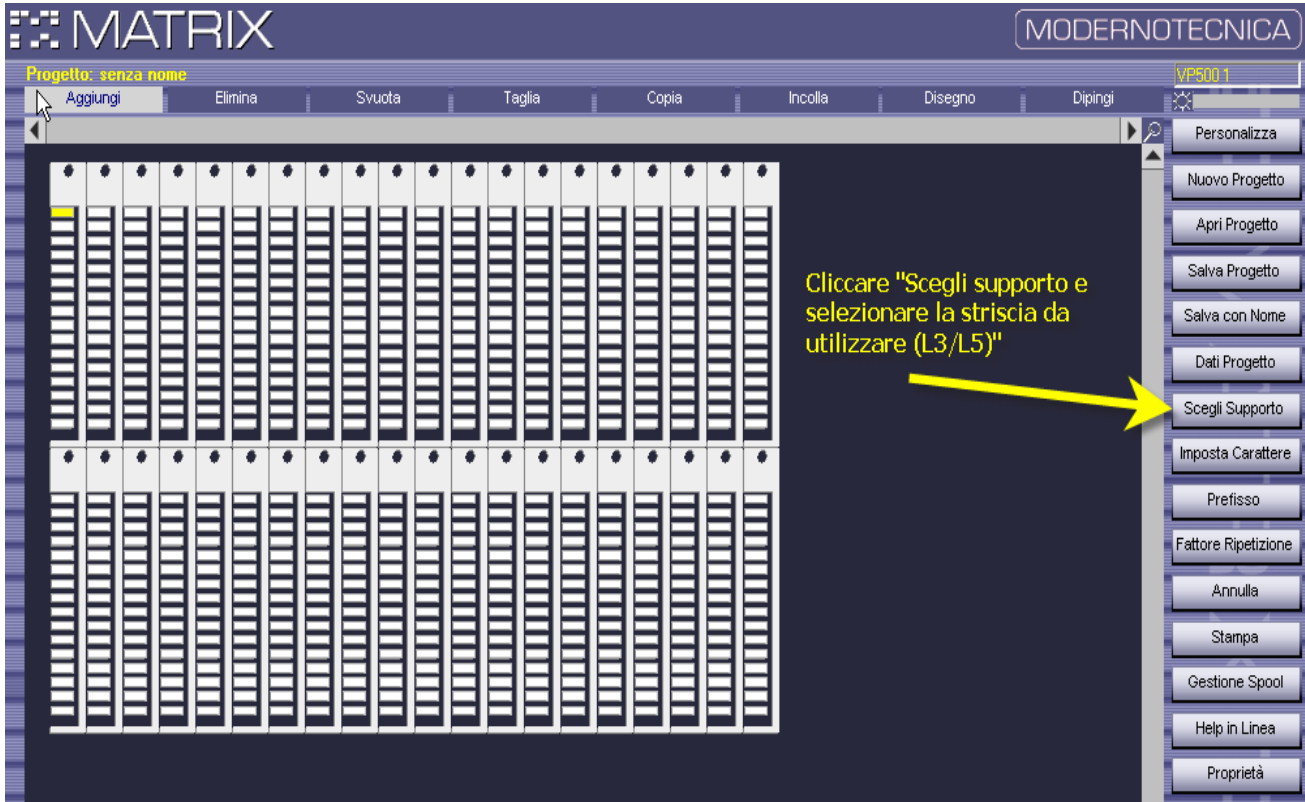
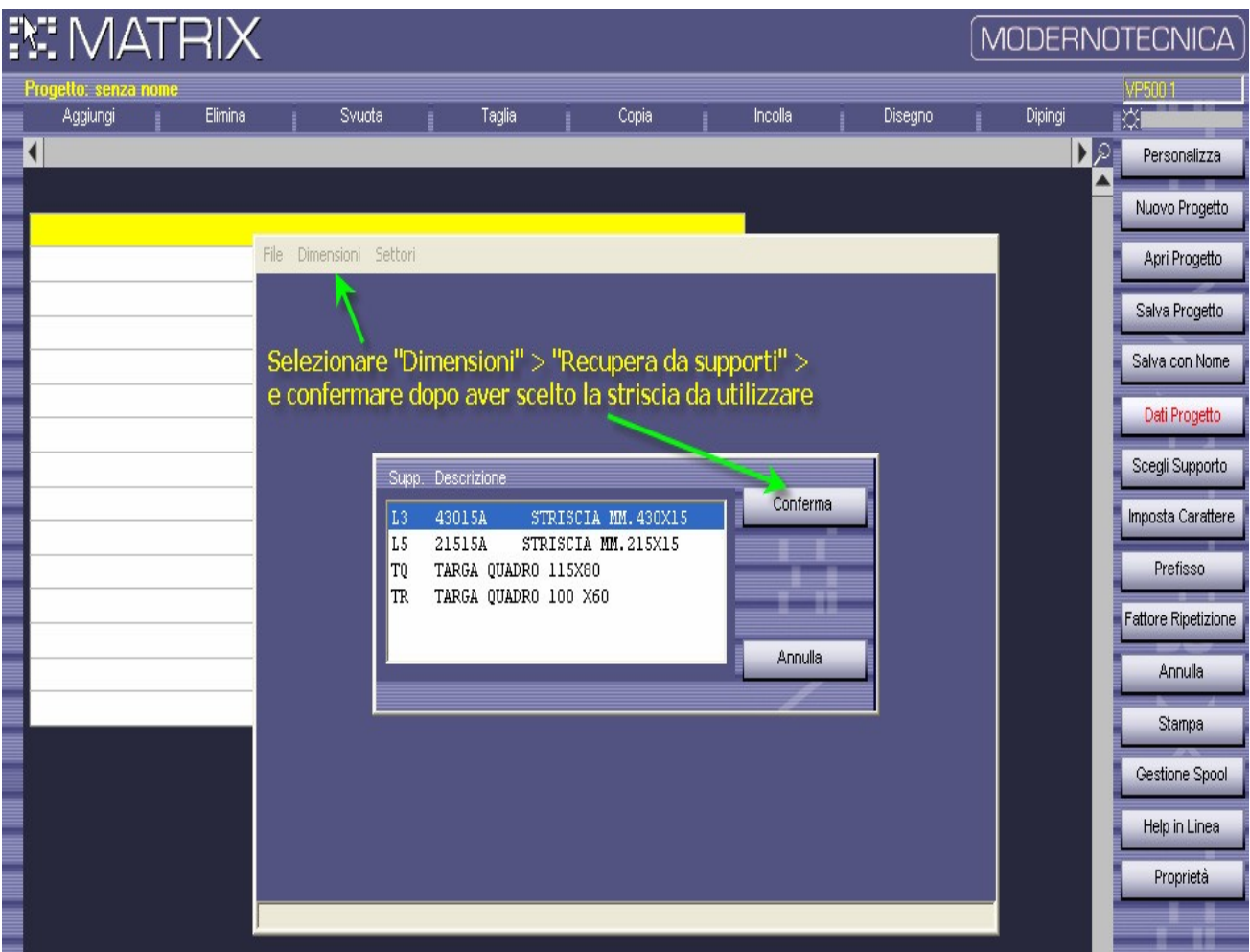
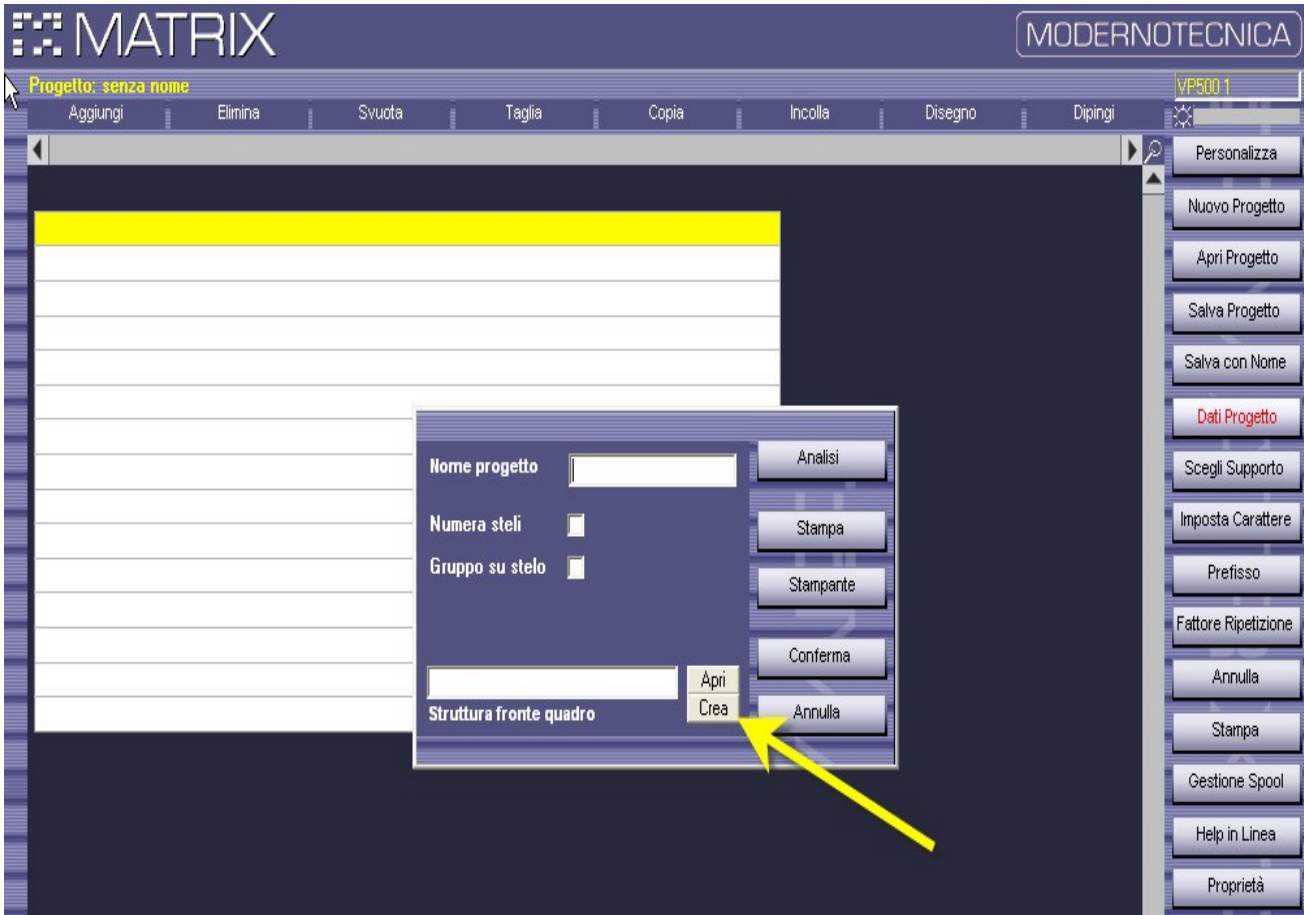
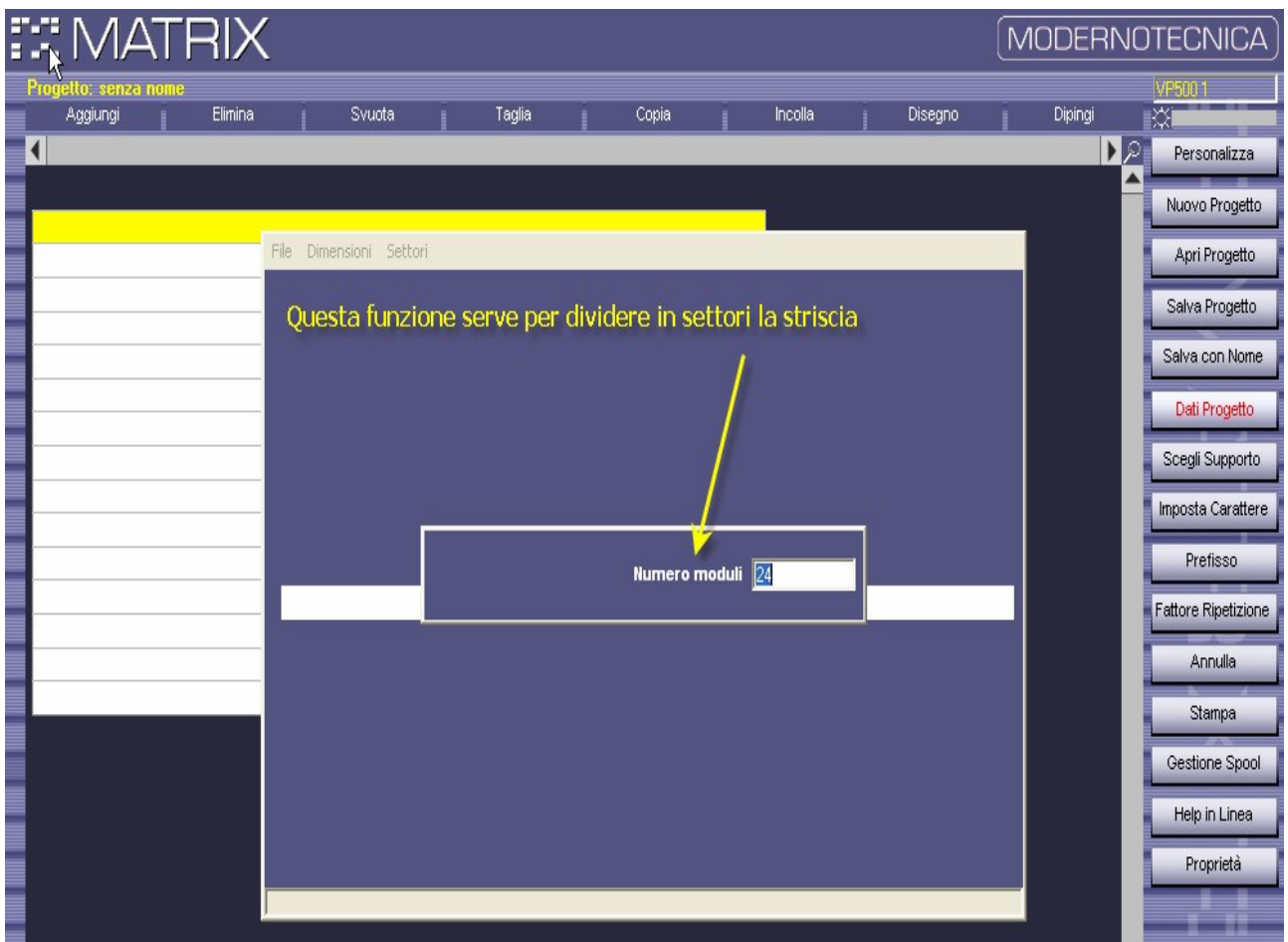
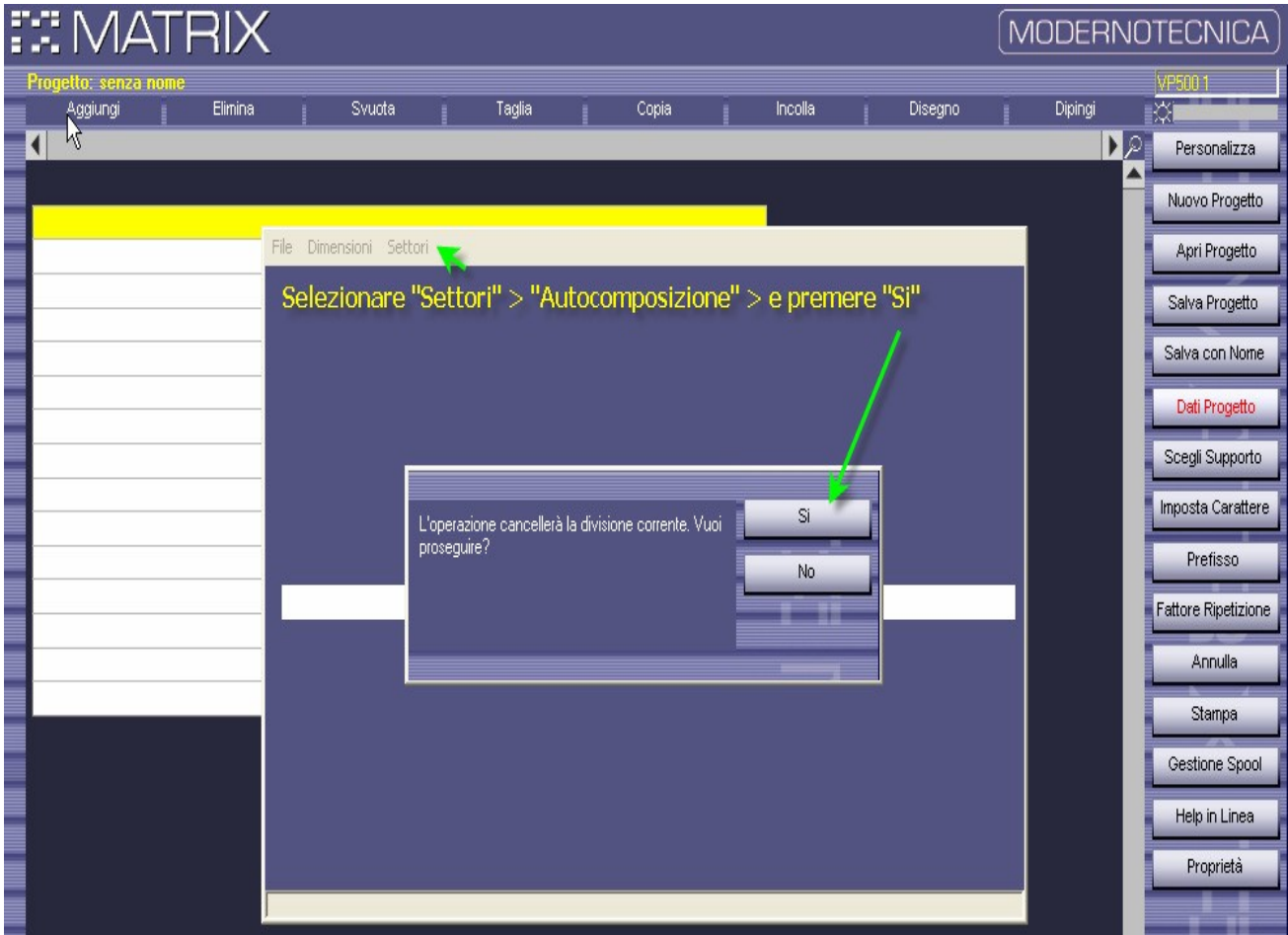


AUTOCOMPOSIZIONE STRISCEINBILAMINATO(43015A/21515A)

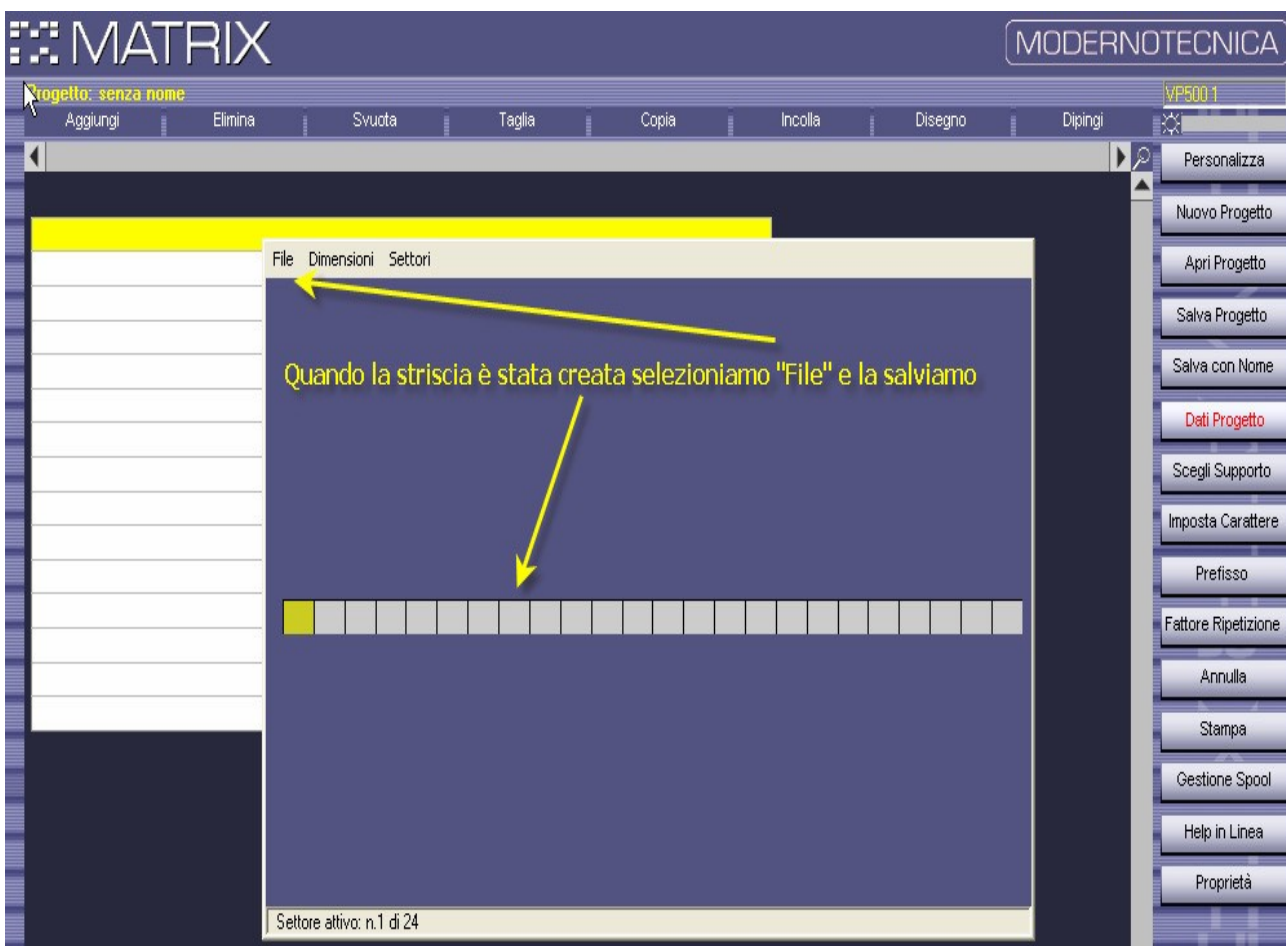
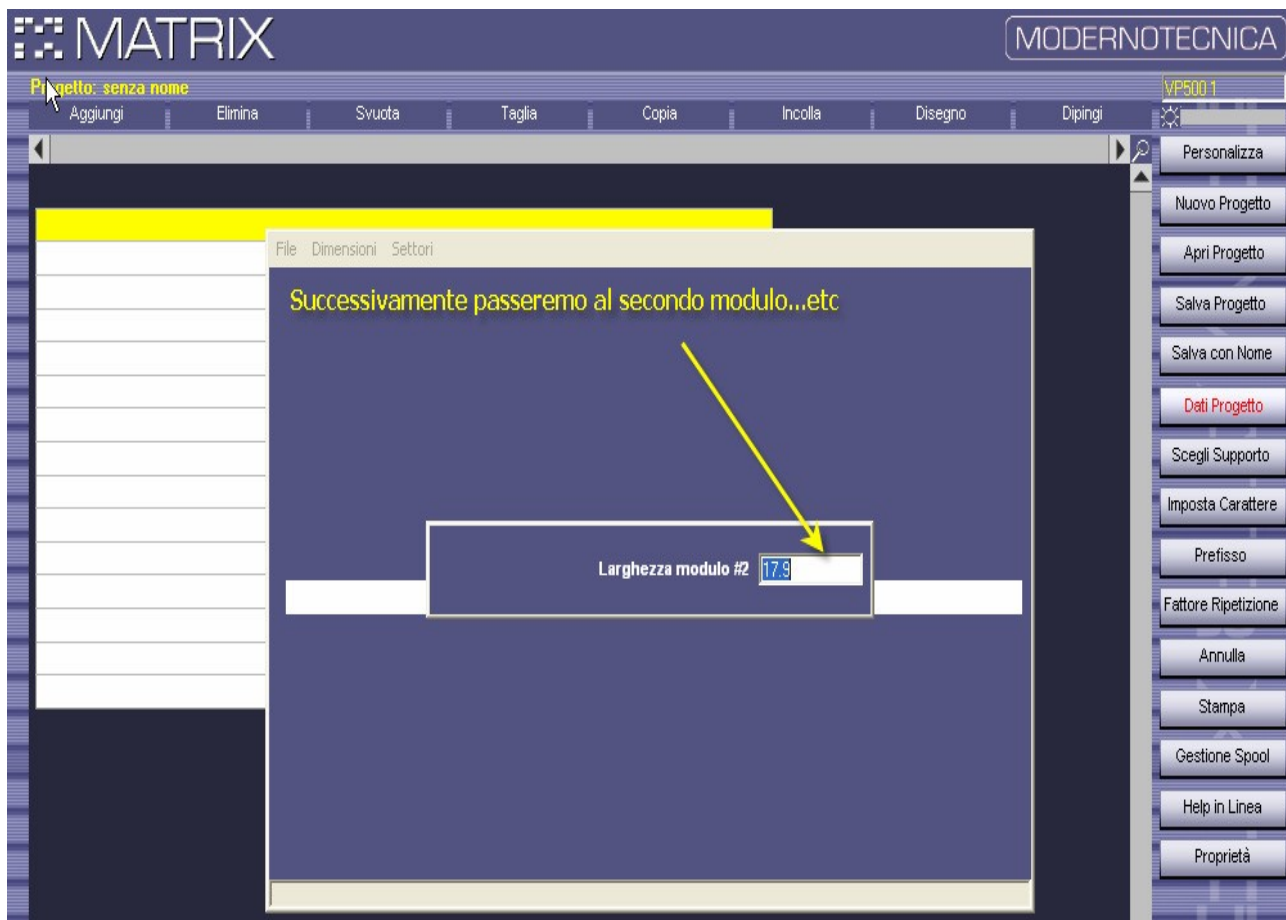


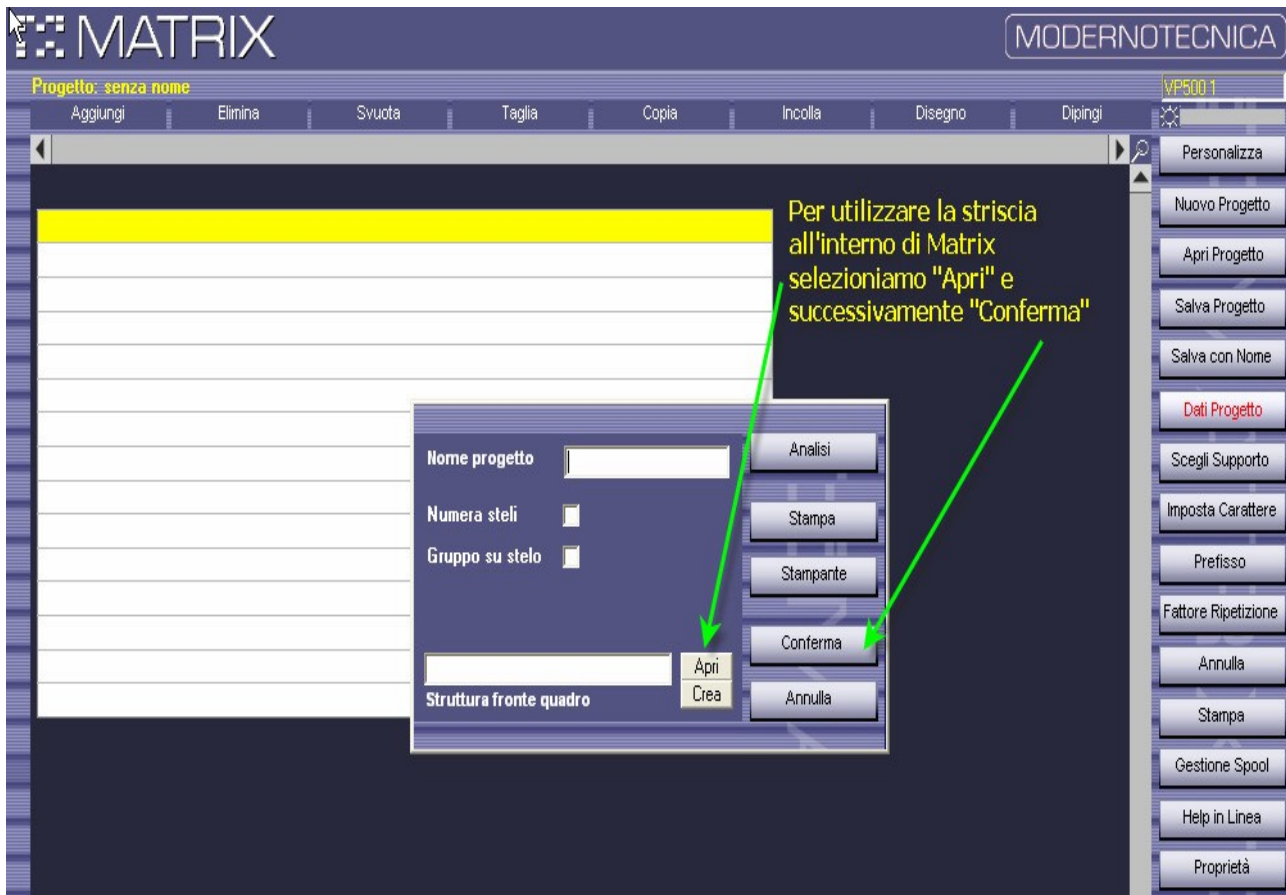




The screenshot shows the MATRIX software interface with the 'MODERNOTECNICA' window. The top menu bar includes 'Progetto: senza nome' and various actions like 'Aggiungi', 'Elimina', 'Svuota', 'Taglia', 'Copia', 'Incolla', 'Disegno', and 'Dipingi'. A right-hand toolbar contains buttons for 'Personalizza', 'Nuovo Progetto', 'Apri Progetto', 'Salva Progetto', 'Salva con Nome', 'Dati Progetto', 'Scegli Supporto', 'Imposta Carattere', 'Prefisso', 'Fattore Ripetizione', 'Annulla', 'Stampa', 'Gestione Spool', 'Help in Linea', and 'Proprietà'. The main workspace displays a dialog box titled 'File Dimensioni Settori' with the text 'La successiva gestisce la larghezza di ogni modulo'. A yellow arrow points to a text input field labeled 'Larghezza modulo #1' which contains the value '17.9'.

The screenshot shows the MATRIX software interface with the 'MODERNOTECNICA' window. The top menu bar and right-hand toolbar are identical to the previous screenshot. The main workspace displays a dialog box titled 'File Dimensioni Settori' with the text 'La successiva funzione gestisce il nr di righe che andranno a dividere un modulo'. A yellow arrow points to a text input field labeled 'Nr. righe (1 o 2) del modulo #1' which contains the value '1'.





Technical Assistance

Brady Italia

Via degli abeti, 44, 20064 Gorgonzola (MI) - Italia

Tel. +39 02.2600022 Fax +39 02.2575351

Website : <http://www.bradycorp.it>

E-mail : tsitaly@bradycorp.com