

NetDoc® Cable Management Software



NETDOC®

Complete your cable management solution with a Brady printer



BMP®61
Label Printer

Save time using the list functionality which allows you to export asset and cable information from NetDoc to a CSV file. Place the CSV file on a USB to import the data into the BMP61 for quick label creation.



BBP®33
Label Printer

Pair the BBP33 with Brady Workstation for label design, data importing, editing and printing. The printer automatically reads installed label cartridges for hassle free printing.

As cable networks grow and become more complex, having proper documentation is necessary to know what you have, where it is located and what it is connected to. Gain the ability to document and identify every aspect of your network, including cables, patch panels, racks, assets and much more.

Make your job easier and your cable management more effective with NetDoc Cable Management Software.

▶ Documenting your network gives you:

- **Quicker Issue Resolution.** Proper documentation allows you to quickly locate, review, and correct network issues.
- **Improved Security.** Improve the overall security of your network, or your ability to recover from a disaster.
- **Centralized Network Information.** Store test results, architectural drawings and other attachments in one secure location.
- **Improved Efficiency.** Focus on the task at hand instead of hours locating specific cables.
- **Zero Audits.** Eliminate ongoing manual audits by having up-to-date network documentation.
- **Industry compliance.** Comply to ANSI/TIA/EIA-606 industry labeling standards.
- **Manage Moves.** Manage the impact to assets and cables due to moves, adds and changes within your facility.

▶ With a labeled network you can:

- **Quickly Locate Assets.** Quickly locate cables and know which component(s) they connect to.
- **Save Time.** Eliminate wasted time spent fishing through hundreds of cables in search of the correct one.

Layers of documentation:

■ Company

- Campuses
- Buildings
- Floors
- Spaces

■ Infrastructure

- Racks
- Faceplates

■ Cables

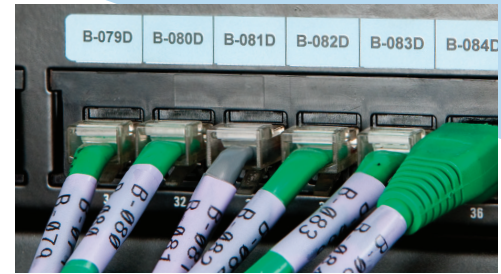
- Backbone Cables
- Horizontal Links
- Patch Cables

■ Assets

- Laptops
- Phones
- Printers
- Switches
- Routers

■ Termination Hardware

- Patch Panel
- Wiring Blocks



Key features:

- **Company and Infrastructure Management.** Document campuses, buildings, floors, spaces, racks and faceplates in order to track physical locations of cables, hardware and assets.
- **Asset Management.** Document assets such as computers and phones and cables connecting them to your network.
- **Cable Management.** Document fiber and copper cables, their location and termination hardware they connect to.
- **Rack Management.** Manage rack locations, connected assets, ports and fiber connections.
- **Network Tracing.** Use the Visual Connector and Circuit Trace tools for a visual interpretation of connected hardware, assets and cables.
- **Documentation Wizards.** Easy to use wizards speed the process of documenting cables, assets and other network components within the software.
- **Import and Export.** Import data from Microsoft Excel or SQL to update network components. Export network components at any point in the network layout for analysis or label printing.
- **Reporting.** Run ad-hoc or scheduled reports for analysis.
- **Cable and Asset Labeling.** Comes packaged with Brady Workstation software to speed the design and printing of labels for all assets in your network.
- **Web-Enabled.** Access from multiple any workstations throughout your facility.
- **Low Cost.** Pricing is not tied to a number of racks or devices, ensuring that while your cable management infrastructure grows, your software bill does not.

For more information or to request a demo, visit BradyID.com or call 1-888-272-3946

USA
Customer Service: 1-888-272-3946
Inside Sales: 1-888-311-0775
BradyID.com

Canada
Customer Service: 1-800-263-6179
BradyCanada.ca

Mexico
Customer Service: 1-800-262-7777
Inside Sales: 1-800-262-7777 ext 177
BradyLatinAmerica.com

 **BRADY**
WHEN PERFORMANCE MATTERS MOST™