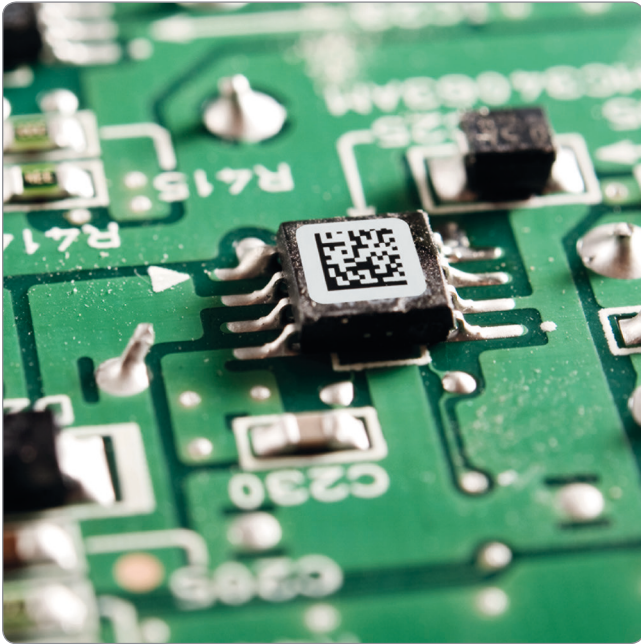


Printed circuit board labelling

with Label Feeder

www.bradyeurope.com/PCB



Label your printed circuit boards

Accurate tracking of raw materials and finished goods throughout production processes can increase production efficiency, open up new markets and attract more customers by enabling a number of competitive advantages:

- increased product quality control
- increased product safety
- increased reputation and brand protection
- reduced counterfeit components
- reduced production process costs
- reduced warranty costs
- reduced product recalls
- legal compliance
- regulatory compliance

Automated printed circuit board labelling

Brady offers a reliable and complete solution to automate printed circuit board labelling in order to enable Smart Manufacturing. Our solution includes these components:

- durable auto-apply labels
- reliable auto-apply systems
- custom support including setup, maintenance and parts
- extensive label testing in in-house laboratories

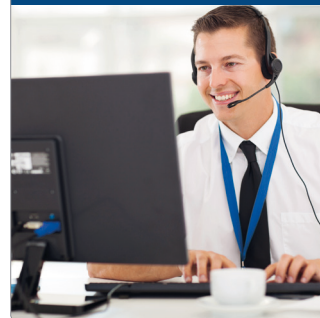
Automated print & apply



Durable labels

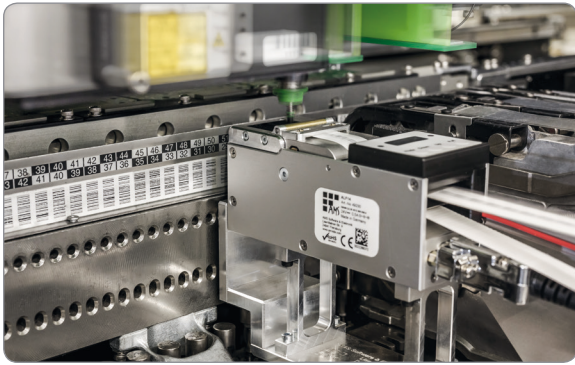


Custom support



In-house laboratory





Automatic label feeding

The ALF14 Label Feeder automates label feeding to your existing pick & place machine. Fast, efficient and easy to use, the ALF14 Label Feeder offers effective automated label feeding and can be implemented anywhere along the production line. Labels are simply treated like any other component and are placed with the accuracy of your current pick and place machine. The label feeder's compact and durable design allows for flexibility and simplicity.

The ALF14 Label Feeder offers

- easy label loading and setup
- fast sensing and dispensing
- easily adjustable liner width to avoid downtime
- compatibility with a wide range of label sizes
- compatibility with a range of pick & place machines
- easy integration thanks to a small footprint
- great durability
- easy signal interfacing for machine compatibility
- great reliability with Brady's printed circuit board labels



Durable printed circuit board labels

Brady's B-7727 polyimide printed circuit board label is specifically designed for auto-apply applications. The specially designed APL (Auto Apply Label) range has a reduced liner width and works with a smaller ribbon for ultra-compatibility with auto-apply systems. B-7727 can withstand temperatures up to 300°C and the powerful chemicals and cleaning processes used in PCB assembly, equipment and component manufacturing.

The B-7727 printed circuit board label offers

- outstanding auto-apply compatibility thanks to a reduced liner width
- great placement accuracy and high pick-up rate
- reduced risk of adhesive bleeding
- extreme washing/aggressive cleaning applications
- top or bottom label placement
- surface mount and through-hole assembly
- high heat (300°C) resistance
- great legibility, even after exposure to chemicals
- good performance in reflow, wave solder and board washing
- abrasion resistance
- printability on-site
- available as pre-printed labels on request



WHEN PERFORMANCE MATTERS MOST™

Brady EMEA

Africa	+27 11 705 3295	Middle East	+971 4881 2524
Benelux	+32 (0) 52 45 78 11	Norway	+47 70 13 40 00
Denmark	+45 66 14 44 00	Central & Eastern Europe	+421 2 3300 4800
France	+33 (0) 3 20 76 94 48	Spain & Portugal	+34 900 902 993
Germany	+49 (0) 6103 7598 660	Sweden	+46 (0) 8 590 057 30
Hungary	+36 23 500 275	Turkey	+90 212 264 02 20
Italy	+39 02 26 00 00 22	UK & Ireland	+44 (0) 1295 228 288

Your Brady Distributor