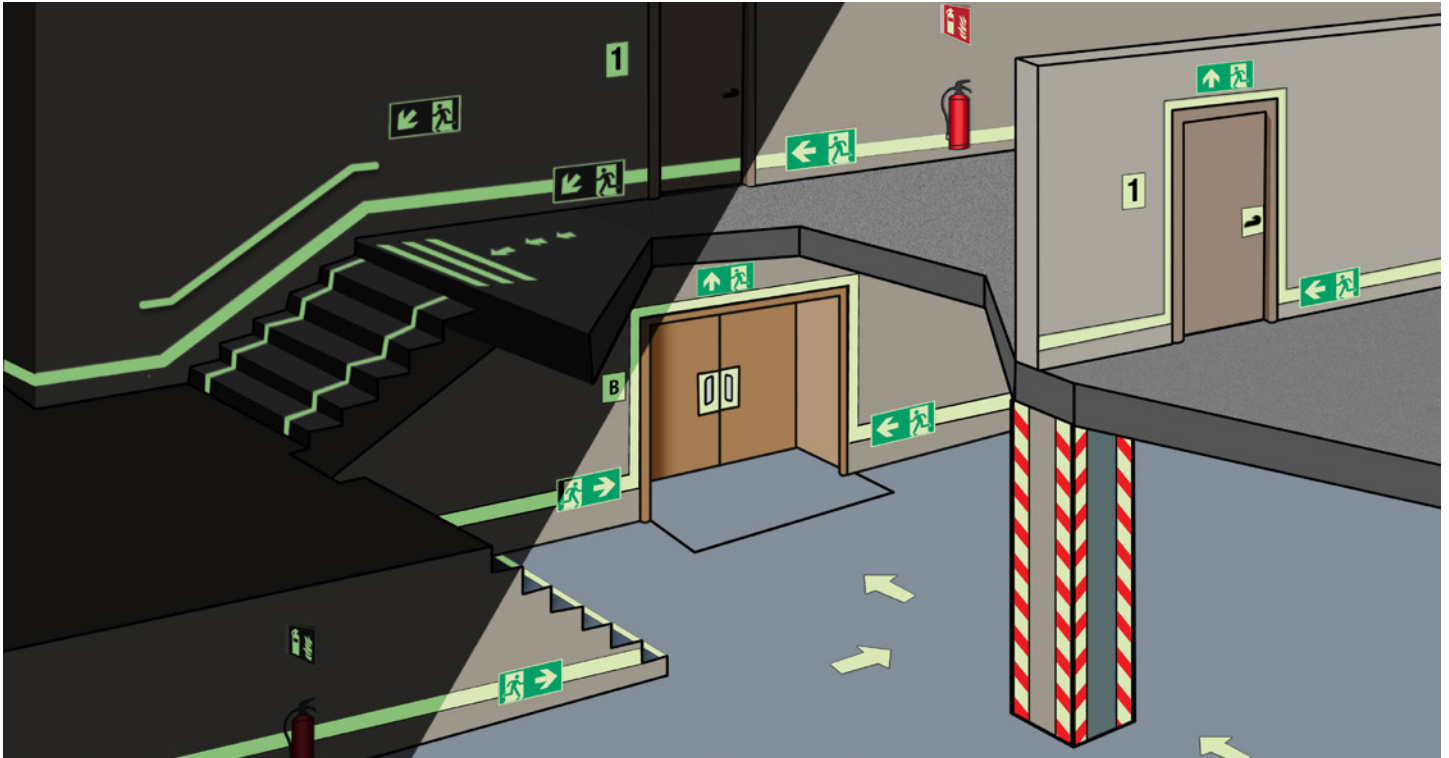


**Do you have a plan to get everyone out quickly in case of emergency?
What if the lights go out? Try glow-in-the-dark signs!**



Why should you improve your building's exit path marking system? It is one of the most important ways to prepare your facility for an emergency. An escape route should be the shortest, quickest and safest path out of the building from any given location. Even today, most buildings and facilities have insufficient emergency lighting despite meeting local codes. Electrically illuminated EXIT signs located at door or ceiling level are frequently obscured in a fire by heavy smoke. Inadequate system maintenance can result in an exit path marking system with less than 100% reliability. Electrical systems (primary and backup) can fail during an emergency event due to damage from heat and firefighting water.

Photoluminescent exit path markings are always there. They don't rely on external power and don't require regular maintenance. These glow in the dark signs are made of high quality phosphorescent materials, absorbing and storing energy from natural daylight and artificial light. **In darkness the stored energy is released in the form of bright green luminance.**



Print your own safety signs on photoluminescent polyester tapes with the help of Brady Safety Identification printers

B-582 Glow-in-the-dark material is ideal for exit and directional signs, identification of fire alarms and extinguishers, low location egress pathway markings, and directional systems for escape or evacuation routes.

Safety printers enable you to print durable safety signs, pipe markers and even safe work procedures on-site and on demand.

On-site identification printing capabilities eliminate the need to store various safety signs for future use. With a few consumables, you can print any sign you need, when you need it.



[Get your
photoluminescent
tapes now!](#)