



Automate tracking for any asset,
anywhere.

Complete RFID Solutions

About BRADY

Once you have worked with BRADY, our name will stick with you, (just like our labels) because BRADY is one of the world's leading labelling and identification specialists.

Innovative

At BRADY we continue to improve. We have many customers from all industries, and we strive to be ahead of their needs by continuing to invest in research for even more performant solutions. By developing more user-friendly and efficient concepts, we give our thousands of customers the best in the market.

Strength

At BRADY, we believe our biggest strength is the wide range of identification and safety solutions we can offer our customers, whether it's labelling the smallest component or complete signage for an entire warehouse. We're also proud to offer many products and services - from printers, scanners and software to service contracts and on-site training - that compliment any identification job. And don't forget, our wide network of expert distributors can always offer you a tailor-made solution to meet your specific requirements.

Trust

For over a hundred years, BRADY has been connected with quality, trust and stability. We demand the best for your products and services, because we know, better than anyone, the importance of good and reliable identification. Identification looks like a small detail, but every professional knows that this kind of detail is crucial to any business.

Inform

We also have specialised dealers in your region, who can answer all your identification, safety and labelling questions, specific to your activity. They will be happy to provide you with all kinds of options and solutions with no obligation.

Microsoft is a trademark of Microsoft Corporation, Bluetooth is a trademark of Bluetooth Sig, Inc., Android is a trademark of Google Inc.



Brady products are sold on the condition that the purchaser will test them in actual use and determine for himself/herself their suitability to his/her intended purpose. Brady warrants to the purchaser that Brady products are free from defects in material and workmanship but limits its obligation under this warranty to the replacement of the product which has been shown to Brady's satisfaction to have been defective at the time of its purchase.

The warranty does not extend to any persons who have acquired the product from the purchaser. It is in lieu of any other warranty, including every warranty of sale-ability, marketability or suitability for the intended purpose, and is also in lieu of any other obligation or liability on the part of Brady.

Under no circumstances will Brady be liable for losses, damage, costs or subsequent damage of whatever nature which may arise in connection with the use of, or inability to use, Brady's products.



A safer and more productive working environment

The Brady Advantage

When it comes to identification, safety and compliance, there's a clear advantage to working with Brady. We put our customers first in everything we do. Our goal is to give you an unrivalled customer experience. We are relentlessly committed to performance and excellence - in our products, services and people. Our products and solutions perform in ways that others simply can't match. Our people perform in ways that regularly exceed your expectations. And our focus and discipline work towards solid, long-term performance for our customers.



Powered by decades of RFID expertise from Nordic ID Technology, Brady's advanced RFID devices offer unparalleled reliability and performance, backed by European R&D and continuous innovation. In short, Brady is the company you trust when performance matters most.

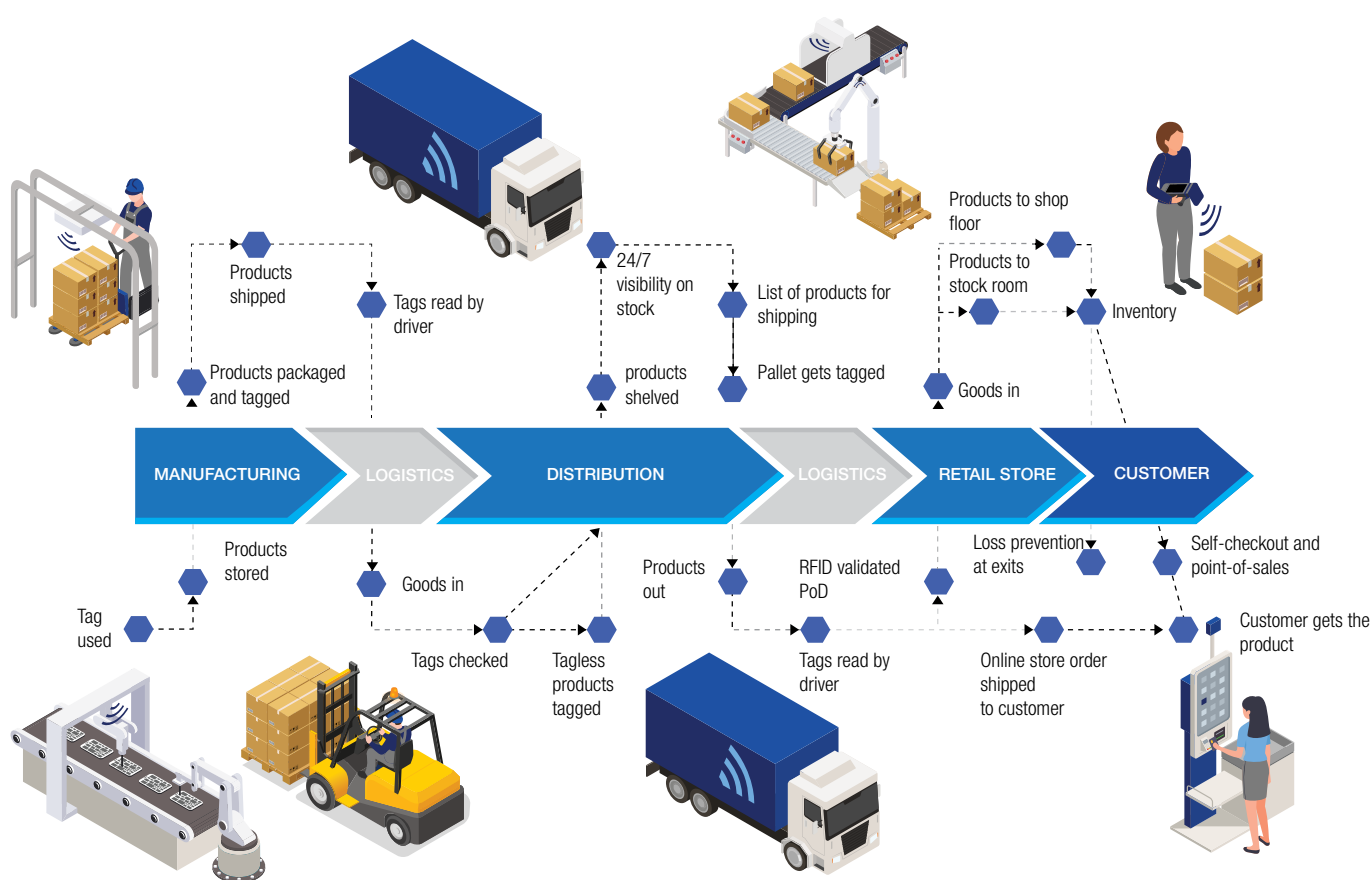
[Learn more about the Brady Advantage at: www.bradyeurope.com](http://www.bradyeurope.com)

AUTOMATE TRACKING FOR ANY ASSET, ANYWHERE.

RFID gives every asset a unique digital identity, enabling instant, real-time visibility without needing line of sight. With this technology, you gain full transparency across your entire operation - from raw materials and production to warehousing and final delivery to the customer. With real-time data visibility, you can track, locate, and manage assets effortlessly, optimising workflows across any industry. Whether you need a fully automated RFID system for seamless tracking or on-demand reading to quickly locate and pick items, our solutions adapt to your needs.

Scalable and tailored to your needs

Wherever you want to start, we deliver a tailored RFID solution to match your business goals. Whether it's inventory management, real-time asset tracking, work-in-progress monitoring, tool lifecycle tracking, shipment security, or cable management, we provide scalable solutions that grow with you. As your needs evolve, we expand your RFID system while keeping all processes connected.



Strategic Benefits: Informed Decision-Making

RFID gives you a full view of operational data, helping you make faster, smarter decisions.

- Gain real-time insights on inventory levels, asset locations, and movement trends
- Ensure preventive maintenance by tracking asset conditions
- Monitor environmental factors to maintain compliance and product quality



Operational Benefits: Efficiency & Productivity

RFID automates and streamlines processes, reducing errors and saving valuable time.

- Locate, track, and manage multiple assets at once, without needing line of sight
- Guide employees efficiently to the right assets, reducing search time
- Automate inventory audits with just a few clicks
- Ensure shipment accuracy by instantly verifying outgoing cargo
- Improve security and loss prevention with precise tracking



Compliance: Meeting Industry Standards

Our RFID solutions comply with global standards for seamless integration and reliability.

- ISO/IEC 18000-63 (EPC Gen2v2): Standard for UHF RFID readers and tags
- ISO/IEC 14443 A/B & ISO/IEC 15693: HF & NFC standards for short and long-range reading
- NDEF Format: Enables NFC chip writing and reading via smartphones



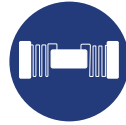
One supplier All solution components.

Brady delivers everything you need for a complete RFID solution—designed to seamlessly integrate, perform in tough environments, and adapt to your tracking needs. Our passive, battery-free RFID labels stay attached in any industry. Our RFID readers, from handheld to fully automated, provide real-time visibility. And our flexible software platform ensures easy setup and integration. Backed by expert services, Brady's RFID solutions put you in control of asset tracking like never before.



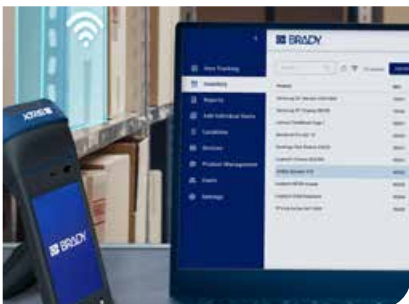
Industrial RFID devices

Choose from handheld or fixed readers, including Nordic ID Technology and Brady-manufactured models, for flexible tracking and real-time visibility, whether on the move or in fixed locations.



Reliable RFID labels

Our RFID labels include UHF, NFC, and dual frequency options, along with sensing labels (temperature, moisture), LED labels, on/off-metal labels, and rigid UHF tags—all built for durability in tough environments.



Flexible RFID software

RADEA.IO, our Nordic ID Technology developed software, offers both standard and customised solutions to integrate smoothly into your systems, providing full control over your RFID deployment.



Expert RFID services

Get expert support and repair from the Brady and Nordic ID Technology team, with installation and maintenance services provided by trusted partners to ensure your system operates flawlessly.

RFID devices

Instantly capture asset data. No line of sight.

Brady's RFID readers and antennas, powered by Nordic ID Technology, deliver unmatched reliability and exceptional performance. Whether you need fixed RFID readers for continuous tracking across your facility, handheld or wearable readers for flexible scanning, or RFID antennas to extend your coverage, our solutions provide seamless asset visibility. With decades of RFID expertise and European R&D, we offer cutting-edge technology to optimise tracking, inventory management, and operational efficiency.

Handheld readers

HH83 RFID ACD

The HH83 models are perfect for daily RFID scanning. They enable users to pick up a large range of RFID signals and offer a great user experience.

Product highlights

- Protect your investment thanks to our easily upgradeable modular design: transform the barcode to RFID whenever you are ready
- Market leading state-of-the-art UHF RFID performance
- Ergonomic design focused on comfortable use
- High-capacity battery supplies up to 12 hours of continuous use
- Android operating system for easy application development



Article No.	Order Ref.	Description
310378	B-HH83-2D	Brady HH83 Reader 2D Imager
310379	B-HH83-2D-LTE	Brady HH83 Reader 2D Imager/LTE
310380	B-HH83-UHF-EU	Brady HH83 Reader UHF ACD 2Dim EU
310381	B-HH83-UHF-LTE-EU	Brady HH83 Reader UHF ACD LTE 2Dim EU

HH85 RFID ACD

The Brady HH85 RFID ACD is the fully ruggedised sibling of the Brady HH83 RFID ACD. It shares the same specifications as the HH83 for memory and CPU and in addition comes with rubber bumpers and a pistol grip, making the HH85 a very solid and drop proof reader.

Product highlights

- Market leading state-of-the-art UHF RFID performance
- Protect your investment thanks to its superior robustness
- Unique combination of large display and ergonomic pistol grip
- Ergonomic design focused on comfortable use
- Operates 18 hours on a single charge
- Android operating system for easy application development
- Fully integrated to Nordic ID solutions



Article No.	Order Ref.	Description
310383	B-HH85-UHF-EU	Brady HH85 Reader UHF ACD 2Dim EU
310384	B-HH85-UHF-LTE-EU	Brady HH85 Reader UHF ACD LTE 2Dim EU



Article No.	Order Ref.	Description
323488	B-HH86-UHF-EU	Brady HH86 Reader UHF 868 2Dimg EU
323489	B-HH86-UHF-LTE-EU	Brady HH86 Reader UHF 868 2Dimg LTE EU
323490	B-HH86-UHF-US	Brady HH86 Reader UHF 915 2Dimg US
323491	B-HH86-UHF-EU2	Brady HH86 Reader UHF 915 2Dimg EU2
323492	B-HH86-UHF-LTE-EU2	Brady HH86 Reader UHF 915 LTE 2Dimg EU2

Accessories

Article No.	Order Ref.	Description
323493	B-HH86-Batt-Pistol	Brady HH86 Battery 10050 mAh Pistol grip cover
323494	B-HH86-adapter-USB	Wall Adapter HH86 US-EU-UK-AU

HH86

The Brady HH86 Handheld RFID Reader is a high-performance mobile computer designed for seamless RFID and barcode data capture. Featuring Android 13, a rugged IP65-rated design, and an intuitive user interface, it ensures reliable operation in demanding environments. With fast UHF RFID scanning, up to 1200 tags per second, and versatile connectivity options, it optimises inventory management and asset tracking.

Product highlights

- All-in-one solution: combines barcode scanning, NFC, HF, and UHF RFID label/tag reading in a single device
- Circular antenna polarisation ensures fast and reliable reading performance up to 10 metres, irrespective of tag orientation
- Visual (LED), audible, and tactile feedback for enhanced user experience
- Hot-swap battery enables instant replacement without shutdown
- Operates 18 hours on a single charge
- Rugged design: IP65-rated enclosure resists dust and moisture, with 1.6-metre drop protection
- Fitted with rubber bumpers and pistol grip for easy handling
- Optimised connectivity options including to Wi-Fi, 4G, 3G
- Android 13 OS with NUR API for easy software development



Article No.	Order Ref.	Description
321710	B-EXA81-EU	Brady EXA81 RFID Reader EU

Accessories

Article No.	Order Ref.	Description
320057	B-HH85-Batt-Pistol	Brady HH85 Battery 10050mAh Pistol grip cover

EXA81

The EXA81 is a powerful RFID sled reader that transforms your smartphone or tablet into a high-performance UHF RFID reader. With industry-leading speed and a read range of up to 15 metres, it enables fast inventory tracking and asset identification. Easily mount any smart device and connect wirelessly via Bluetooth 5.3 or USB-C for seamless operation.

Product highlights

- Best mobile RFID reading capabilities
- No battery swaps: works 24 hours on a single charge
- Read UHF RFID labels from up to 15 metres, and easily scan barcodes and 2D codes
- Compatible with a wide range of smart devices that can be linked wirelessly via Bluetooth 5.3 or with USB-C cable
- Mount to any smart device using screws or Quadlock
- Scan quickly: ergonomic pistol grip with trigger enables fast and easy scanning all day long

HH83/HH85/EXA81 RFID chargers

Article No.	Order Ref.	Description
309995	HH83-85-DTC-KIT-EU	HH83 - HH85 Desktop Charger Kit
310986	ADPT-QC3-USB-KIT	Adapter QuickCharge3 USB-C kit EU/UK/US
311032	HH83-4U-DTC-KIT-EU	HH83 4-Bay Desktop Charger 4 Batt slots EU



Desktop Charger



Multi-charger

Wearable readers

EXA21

The EXA21 is the world's smallest RFID reader with automatic reading, simply connect the EXA21 to a smart device or to Windows 10 PC via Bluetooth Low energy. Its lightweight, compact, and ergonomic design makes it the ideal portable RFID reader for easy and comfortable on-the-go data reading.

Product highlights

- Thin and lightweight UHF portable RFID reader
- Connect to any smart device effortlessly using Nordic ID Smart Pair
- Smart automatic reading capabilities for effortless operation
- Enabling distributed mobile PoS applications
- Make checkout queues a thing of the past by enabling mobile payments



Article No.	Order Ref.	Description
310975	EXA21-868-UHF-EU	EXA21 868 UHF BLE USB EU

Accessories

Article No.	Order Ref.	Description
310986	ADPT-QC3-USB-KIT	Adapter QuickCharge3 USB-C kit EU/UK/US
310987	EXA21-STRAP-S	EXA21 Wrist Strap S-size
310988	EXA21-STRAP-L	EXA21 Wrist Strap L-size
310989	EXA21-DTC-KIT-EU	EXA21 4-Bay Desktop Charger Kit EU
310992	EXA21-FLEX	EXA21 Flex Holder

EXA31

The compact and lightweight wearable UHF RFID reader that is easily connected to any Smart Device via Bluetooth Low Energy. Its compact ergonomic design make in motion data collection tasks easier and more comfortable.

Product highlights

- Compact and lightweight UHF RFID reader
- Optimal read range for your use case
- Can be fastened so that both hands remain free for work tasks
- Long operating time with single charge
- Connect to any smart device effortlessly using Nordic ID Smart Pair



Article No.	Order Ref.	Description
321899	QL-Adapt-EXA31-81	Quad lock Universal Adaptor for EXA31 and EXA81

Accessories

Article No.	Order Ref.	Description
310993	EXA31-868-UHF-EU	EXA31 868 UHF 2D imager EU



Fixed readers

IRX200 RFID Fixed Reader



Article No.	Order Ref.	Description
321713	B-IRX200-EU	Brady IRX200 RFID Fixed Reader EU

The IRX200 features the same RFID engine as the high-performance FR22 reader, and provides a very high asset track and trace performance, even in challenging environments. The IRX200 has one integrated antenna, and one connector that allows to connect one more additional antenna, such as the XA20 antenna, that has the same RF behaviour and form factor than the IRX200, for an exact match when designing an RFID reading point. The IRX200 includes the newest Brady smart computing platform, with real-time capabilities to support industrial protocols such as Profinet, OPC UA and Ethernet IP. It also allows applications and data to be embedded inside the IRX200 reader itself, in case that it's used in non-industrial networks.



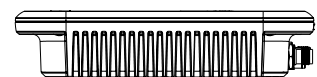
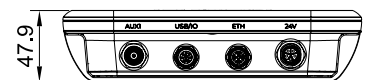
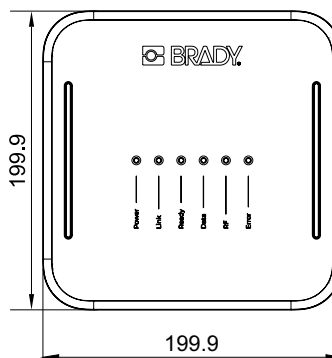
Product highlights

- High RFID performance and powerful processing platform
- Industrial protocols to connect with most of the automation systems
- Rugged housing with integrated RFID antenna and robust connectors
- IP67 ingress protection



Accessories

Article No.	Order Ref.	Description
321897	B-XA20-ANT-EU	Brady XA20 UHF RFID Antenna EU
321900	M12-X-RJ45-5M	IRX200 5m cable M12-X to RJ45
321901	M12-X-RJ45-10M	IRX200 10m cable M12-X to RJ45
321902	M12-X-RJ45-20M	IRX200 20m cable M12-X to RJ45
321903	RP-TNC-ANT-1M	RP-TNC Antenna 1m cable
321904	RP-TNC-ANT-3M	RP-TNC Antenna 3m cable
321905	RP-TNC-ANT-5M	RP-TNC Antenna 5m cable
321906	RP-TNC-ANT-10M	RP-TNC Antenna 10m cable
321907	IRX200-PSU-CORD-EU	IRX200 Power cord EU
321912	M12-A-USB-IO	IRX200 USB/IO cable 150 cm
321913	M12-A-IO	IRX200 IO cable 150 cm
321914	M12-L-POWER	IRX200 Power cable 150cm M12-L connector



FR22 RFID Fixed Reader

The FR22 is the core device of a new approach for RFID fixed systems with wide communication options and a modular design. The FR22 is a critical building block for various track & trace and intelligent manufacturing solutions. It enables different use cases for different segments depending on which modules are attached to it.

Using the same API for backward compatibility with all the other Brady devices and with an improved connectivity, the FR22 is the evolution towards a smarter platform, more powerful, scalable, flexible, and manageable than ever.



Article No.	Order Ref.	Description
311937	B-FR22-RFID-RDR-EU	Brady FR22 Fixed RFID Reader EU
311939	B-FR22-RDR-LTE-EU	Brady FR22 Fixed RFID Reader LTE EU

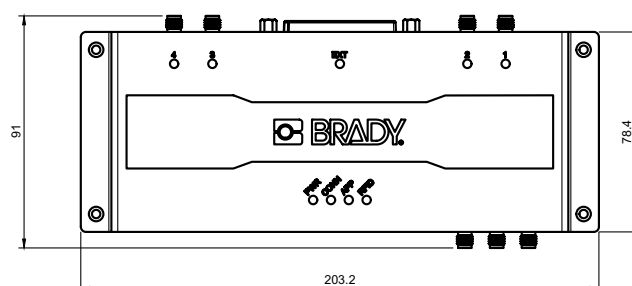


Product highlights

- Fast and reliable edge computing with support for custom embedded applications
- Wide communication options that enable flexibility in system designing and no need for external connectivity hardware
- UHF RFID engine based on the very latest technology
- Develop embedded web apps with user interface. Eliminating the need for external PC/tablet
- Brady extension connector for plug and play accessories like the MUX16
- Connect external devices, sensors, triggers, lights and buzzers
- Full set of APIs available for controlling the reader

Accessories

Article No.	Order Ref.	Description
311920	FR22-PSU-cord-EU	Power Supply FR22 EU
311927	FR22-ANT-Cable-1m	FR22 antenna cable 1 m SMA-male - RP-SMA
311928	FR22-ANT-Cable-3m	FR22 antenna cable 3 m SMA-male - RP-SMA
311929	FR22-ANT-Cable-5m	FR22 antenna cable 5 m SMA-male - RP-SMA
311930	FR22-ANT-Cable-10m	FR22 antenna cable 10 m SMA-male - RP-SMA
311931	FR22-ANT-GA30-8cm	Antenna cable FR22 mounted on GA30 8cm
311941	B-GA30-ANT	Brady GA30 antenna
313687	B-GA30-Backcvt-kit	Brady GA30 back cover kit



FR22 LITE RFID Fixed Reader



BFA Antenna



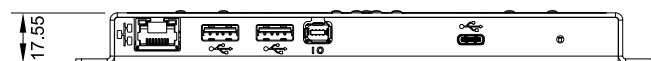
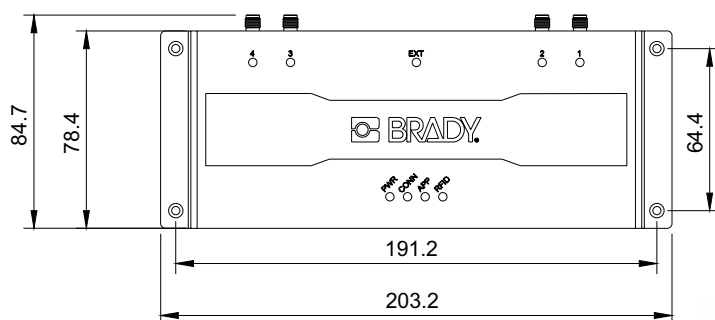
The FR22 Lite is the entry variant of the powerful FR22 reader, but that does not mean its RFID performance is less powerful. Indeed, the FR22 Lite features the same RFID engine as the FR22 and provides a very high asset track and trace performance, even in challenging environments. Using the same API for backward compatibility with all the other Brady devices and with an improved connectivity, the FR22 LITE is the evolution towards a smarter platform, more powerful, and manageable than ever.



Article No.	Order Ref.	Description
319470	B-FR22LITE-RDR-EU	FR22 Lite Reader EU

Product highlights

- Fast and reliable edge computing with support for custom embedded applications
- UHF RFID engine based on the very latest technology
- Develop embedded web apps with user interface. Eliminating the need for external PC/tablet
- Connect external devices, sensors, triggers, lights and buzzers
- Full set of APIs available for controlling the reader



Accessories

Article No.	Order Ref.	Description
311920	FR22-PSU-cord-EU	Power Supply FR22 EU
311927	FR22-ANT-Cable-1m	FR22 antenna cable 1 m SMA-male - RP-SMA
311928	FR22-ANT-Cable-3m	FR22 antenna cable 3 m SMA-male - RP-SMA
311929	FR22-ANT-Cable-5m	FR22 antenna cable 5 m SMA-male - RP-SMA
311930	FR22-ANT-Cable-10m	FR22 antenna cable 10 m SMA-male - RP-SMA
311931	FR22-ANT-GA30-8cm	Antenna cable FR22 mounted on GA30 8cm
311941	B-GA30-ANT	Brady GA30 antenna
313687	B-GA30-Backcvt-kit	Brady GA30 back cover kit



Article No.	Order Ref.	Description
311920	FR22-PSU-cord-EU	Power Supply FR22 EU
311923	GPS-Antenna	Active GPS antenna

FR22/FR22 LITE comparison

The FR22 Lite has the same RFID performance and internal computer as the FR22, but without wireless communication, video support or extension port (for BFA antenna and multiplexer).

	FR22	FR22 LITE
Connectivity Options	GPIO Industrial mini IO port, USB-C, Wireless 802.11 b/g, USB Host, Ethernet, Bluetooth, Wireless 802.11 a/b/g/n, GSM/EDGE, LTE-FDD B1/B3/B5/B7/B8/B20, LTE-TDD B38/ B40/B41, WCDMA B1/B5/B8	GPIO Industrial mini IO port, USB-C, USB Host, Ethernet
Connector	Brady extension port	-
HDMI	Video 1280 x 720 and 640 x 480 resolution	-
Global Navigation	GPS, BeiDou, Glonass	-
Sim	Mini-sim	-
RF Radiated Power	+32dBm (+30dBm in FCC region)	+32dBm (+30dBm in FCC region)
Central Processing Unit (CPU)	Quad-core A7 1.1GHz	Quad-core A7 1.1GHz
Maximum Receive Sensitivity	-87dBm	-87dBm
Reading Speed	Up to 1000 tags per second	Up to 1000 tags per second
Operating System	Linux	Linux

IO Connection Box

The IO Connection Box offers a robust and flexible connection of external devices (e.g. lights, buzzers) and triggering sources (e.g. sensors, buttons) to the FR22, FR22 Lite and Sampo S3 RFID readers. It is connected to the mini IO port of the RFID reader via a provided cable, providing easy access to the pins of the IO port and adding two relays.



Product highlights

- Easy access to the IO pins on the FR22, FR22 Lite and Sampo S3
- LED indicators
- 2 opto-isolated inputs
- 2 opto-isolated outputs or 2 relay outputs (configurable with a switch)



Article No.	Order Ref.	Description
320034	B-IO-EXT-BOX	Brady IO Connection box

Brady MUX16

The MUX16 extends the RFID reading zones of the the FR22, from 4 to 16. The MUX16 is fully integrable with the FR22 working as one piece without any additional cables.



Product highlights

- Very low losses providing better overall efficiency
- Unique power + data interface over coax
- Fully integrable with the FR22
- Ready to use with NUR API

Article No.	Order Ref.	Description
311940	B-FR22-Multiplex	Brady Mux 16 port multiplexer
311947	B-FR22-Mux16-EU	Brady FR22 + Mux 16 ports kit EU
311949	B-FR22LTE-Mux16-EU	Brady FR22 LTE + Mux 16 ports kit EU

SAMPO S1

The Sampo S1 is a fixed UHF RFID reader with an integrated antenna, which come with a flat design. The Sampo S1 is a basic but powerful RFID reader and writer with USB interface for communication and power.



Product highlights

- Integrated antenna
- High performance UHF RFID
- Three external antenna ports
- Power over USB or external power supply

Article No.	Order Ref.	Description
310215	SAMPOS1-RDR	Sampo S1 Reader / UHF RFID (USB), EU

SAMPO S3

Reliability, ease-of-use, and speed. The Sampo S3 delivers these very same promises. Get access to an RFID reader, antenna, and computer in one package. Just one Sampo S3 RFID reader at your point of sale has you covered – there's no need for any other external hardware.



Product highlights

- All-in-one RFID solution – With an integrated antenna and edge computing, you won't need external hardware
- Time-proven performance
- Lightweight, sleek design – The device's unobtrusive design lets you easily mount the device in nearly any position
- Easy installation – Integrated mounted brackets and Power-over-Ethernet make setup simple

Article No.	Order Ref.	Description
316357	SAMPO-S3-RDR-EU	Sampo S3 Reader UHF RFID EU

Sampo S1/S3 comparison

	Sampo S1	Sampo S3
Use cases	Apparel and retail (PoS)	Apparel, retail, gate and tunnel solutions
Power	Via USB (no power supply required)	Power over Ethernet (PoE)
Wired connectivity	USB	USB, Ethernet, IO
Wireless connectivity	-	WLAN, Bluetooth
Computing capabilities	-	Edge computing platform with Linux OS
Reading range	Medium	Large

STIX

The Stix is an affordable credit card-sized UHF RFID reader with USB connectivity. It makes it easy to bring UHF RFID capabilities to your PC, smartphone or tablet. The Stix is suitable in application areas such as point of sales, information kiosks, smart displays, document tracking, smart shopping and electronic article surveillance in stores.



Product highlights

- Extra small RFID reader with USB connectivity
- Suitable for smartphones and tablets
- Easy installation
- USB powered

Article No.	Order Ref.	Description
311095	STIX-UHF-EU	Stix/UHF RFID (USB) EU

Physical Properties	
Width x Height x Depth (mm)	53 mm (W) x 7 mm (H) x 79 mm (D)
Weight	22 g
Focal point	Up to 1 m
Reading speed	200 tags in DRM mode



Antennas

BFA Antenna

The BFA is an advanced beam-forming overhead antenna with 28 software-controlled beams and an integrated movement and direction detection sensor. All the beams can be enabled for the highest RFID reading coverage and accuracy, or only specific beams can be enabled to define a limited area of detection and reduce unwanted readings. The FR22 can be seamlessly connected and mounted on the back.



Article No.	Order Ref.	Description
311942	B-BFA-ANT-868	Brady BFA antenna 868
311945	B-FR22-RDR-BFA-EU	Brady FR22 + BFA 868 kit - EU
311946	B-FR22-RDLTE-BFAEU	Brady FR22 LTE + BFA 868 kit - EU

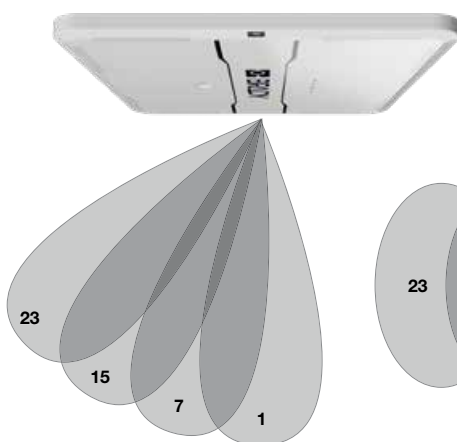
Product highlights

- 28 software-controlled antenna beams to provide multiple coverage shapes for different use cases or environments
- High read accuracy due to multiple overlapping beams
- Reliable object direction detection and environment mapping
- Integrated loud buzzer and high visibility LEDs to provide user indications in track & trace and access control applications
- VESA standard mounting

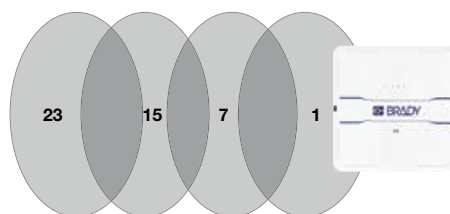
Suitable application areas

- Real-time inventory
- Track and trace
- Access control
- RFID gates
- Doors and corridors

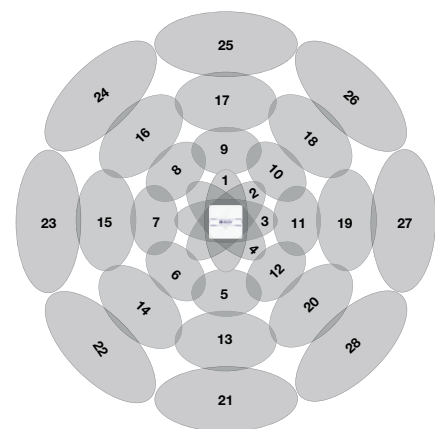
Antenna beams radiation patterns (beams not represented in scale)



Side view of 1/8 of the beams



Top view of 1/8 of the beams



Top view position of the 28 beams (represented coverage is not real, as overlaps among beams is much higher than drawn here)

Brady GA25

The GA25 is a robust and extremely cost-efficient antenna with circular polarisation. This antenna can be mounted directly on all surfaces, even metal, without compromising UHF RFID reading performance.

Product highlights

- High gain to achieve the longest RFID reading distance
- Usable on all surfaces, including metal
- Good performance in every orientation
- VESA standard mounting
- A smaller, more cost-effective form factor
- IP65 ingress protection



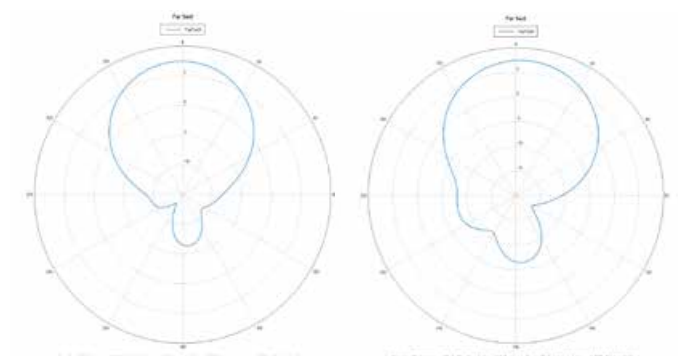
Suitable application areas

- Asset tracking
- Inventory management
- People or vehicle access control
- Document tracking
- RFID gates
- RFID tunnels



Article No.	Order Ref.	Description
320032	B-GA25-ANT-EU	Brady GA25 antenna EU

Antenna radiation pattern



Brady GA30

The GA30 is a general-purpose antenna with a very high gain and is ideal for harsh environments where IP rating is needed. This antenna can be mounted directly on all surfaces, even metal, without compromising UHF RFID reading performance. The GA30 is a global band antenna with real circular polarisation, enabling it to be used at its maximum performance in any region worldwide and with any tag orientation. The modular fixed reader FR22 attaches natively to the back of the GA30.



Article No.	Order Ref.	Description
311941	B-GA30-ANT	Brady GA30 antenna
313665	B-FR22-RDR-GA30-EU	Brady FR22 Fixed RFID Reader EU with GA30 Antenna
313667	B-FR22LTE-GA30-EU	Brady FR22 Fixed RFID Reader LTE EU with GA30 antenna

Article No.	Order Ref.	Description
313687	B-GA30-Backcvr-kit	Brady GA30 back cover kit

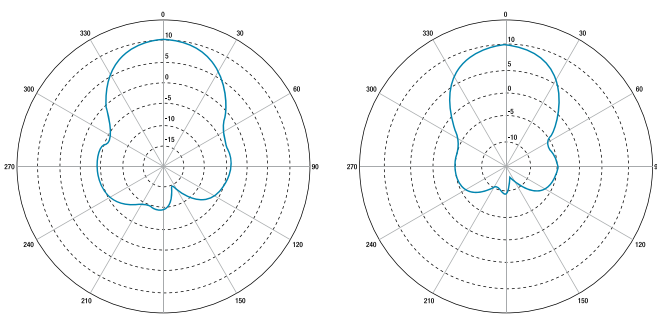
Product highlights

- High gain to achieve the longest RFID reading distance
- Incredibly low axial ratio to provide the best performance in every orientation
- Usable on all surfaces, including metal
- IP65 rating
- VESA standard mounting

Suitable application areas

- Asset tracking
- Inventory management
- People or vehicle access control
- Document tracking
- RFID gates
- RFID tunnels

Antenna radiation pattern



SAMPO S0

The Sampo S0 is an antenna specifically designed for RFID applications. With these RFID antennas, it is easy to expand the reading coverage and improve the performance of the RFID system. Due to the antenna's matching design, it fits perfectly together with the Sampo S1 reader, which forms a coherent RFID system.

Product highlights

- High-gain circular polarisation
- Fast and easy integration
- Integrated antenna

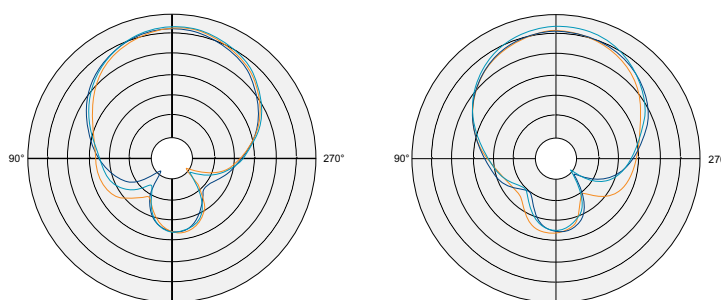
Suitable application areas

- Smart shelves
- Inventory management
- Access control
- Document tracking
- RFID gates
- EAS



Article No.	Order Ref.	Description
311039	SAMPOS0-ANT-EU-US	Sampo S0 Antenna EU-US freq UHF RFID SMA

Antenna radiation pattern

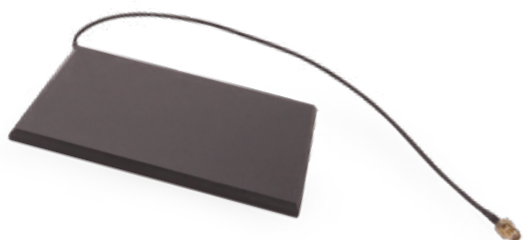


GA25/GA30/Sampo S0 and FA3030e comparison

	GA25	GA30	Sampo S0	FA3030e
Size (mm)	250 x 250 x 29	300 x 300 x 33	200 x 260 x 25	300 x 300 x 6
Weight	560 gr	860 gr	438 gr	810 gr
Material	PC-ABS V0	PC-ABS V0	PC-ABS	ABS
Connector	SMA	SMA	SMA	SMA
Mounting	VESA 200	VESA 200 can mount FR22 on the back	Screws	Screws
Works on metal	Yes	Yes	Yes	Yes
Polarisation	Circular	Circular	Circular	Circular
Freq. Range	ETSI or FCC	Global	Global	ETSI or FCC
VSWR	< 1.5:1	< 1.5:1	< 1.5:1	< 1.5:1
Max gain	7.5dBic	10dBic	7dBic	6dBic
Beam width (-3dB)	65° / 65°	50° / 50°	80° / 80°	60° / 60°
Axial ratio	< 1dB	< 0.5dB	1dB	3dB
F/B ratio	15dB	20dB	10dB	23dB
IP rating	IP65	IP65	IP20 (indoor)	IP20 (indoor)

Flat antenna FA1515e

The FA1515e is ideal for environments where size constraints need to be taken into account. Due to its unique radiation pattern this flat antenna can be mounted directly on surfaces, even metal surfaces, without compromising UHF RFID reading performance.



Article No.	Order Ref.	Description
311011	FA1515E-UHF	Flat Antenna FA1515e 868/UHF RFID (SMA)

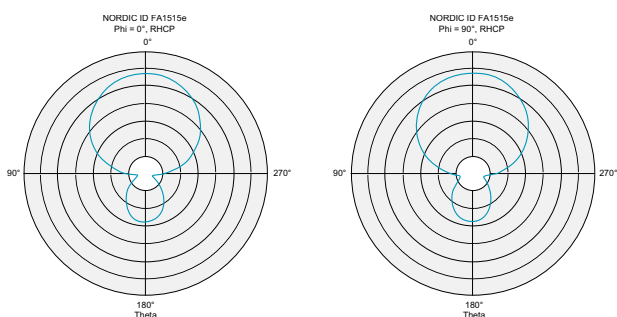
Product highlights

- Compact size that enables usage in solutions with size constraints
- Usable on all surfaces, including metal
- Consistently good reading performance even when the tags are placed directly on the surface

Suitable application areas

- Commissioning
- Point of sales

Antenna radiation pattern



Flat antenna FA3030e

The flat design of the FA3030e is ideal for unobtrusive usage in retail environments. This flat antenna has a unique radiation pattern ensuring that the FA3030e can be mounted directly on surfaces, even metal surfaces, without compromising UHF RFID reading performance.



Article No.	Order Ref.	Description
309991	FA3030e-868-UHF	FLAT ANTENNA FA3030E 868/UHF RFID (SMA)

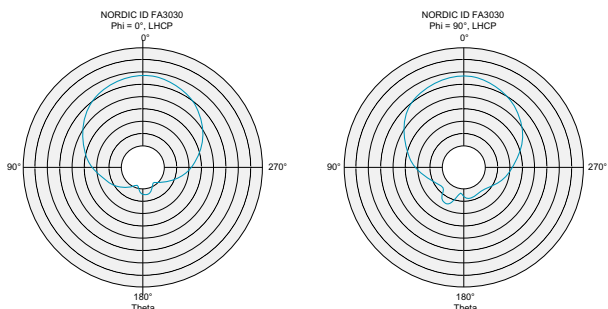
Product highlights

- Thin design that blends in well in different environments
- Usable on all surfaces, including metal
- Consistently good reading performance even when the tags are placed directly on the surface

Suitable application areas

- Smart shelves and cabinets
- Commissioning
- Point of sales

Antenna radiation pattern



Special antenna SA0408

The SA0408 is ideal for environments where size limitations and IP rating need to be taken into account. Thanks to its unique design, this antenna can be mounted directly on all surfaces, even on metal, without compromising UHF RFID reading performance.

Product highlights

- Compact size yet excellent performance
- Usable on all surfaces, including metal
- IP65 rating

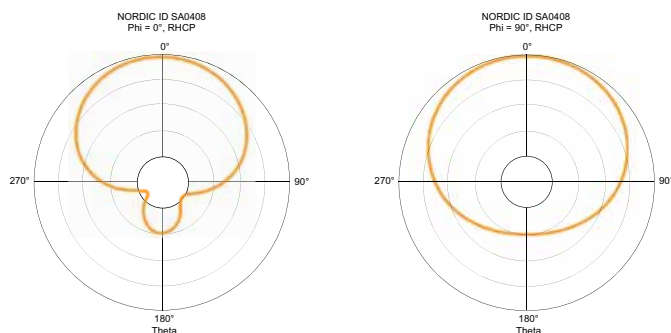
Suitable application areas

- Commissioning
- Point of sales
- Manufacturing



Article No.	Order Ref.	Description
311078	SA0408-ANT-UHF	Special Antenna SA0408 868/UHF RFID (SMA)

Antenna radiation pattern



PORTABLE RFID KITS

Print & encode RFID labels.

Any asset. Anywhere.

Brady's RFID portable kits offer everything you need for on-the-go identification, encoding, and tracking. Whether you're managing cables or assets, you can choose the configuration that suits your needs, each including a portable printer, handheld RFID reader, and the necessary labels. With everything in one kit, you can streamline your workflow and stay mobile without missing a beat.

QuickFlag Portable RFID Kits

Designed for cable identification, the QuickFlag kit allows you to easily write and access data on NFC-enabled cable flags, making intervention processes more efficient.

Each kit includes:

- ▶ M610 or M611 label printer
- ▶ HH85 handheld RFID reader
- ▶ M6-218-483-HF cable flags
- ▶ M61-R6010 ribbon
- ▶ RFID encoding Toolbox and Express labels apps (free download)



Article No.	Order Ref.	Description
321838	M610-QY-EU-QF KIT	M610 HF QuickFlag kit QY EU
321844	M611-EU-QF KIT	M611 HF QuickFlag kit EU



Article No.	Order Ref.	Description
319493	M6-218-483-HF	HF QuickFlag™ Tapered Wire and Cable Flag for M610, M611, M710

Additional rolls of selected RFID labels available individually



Track & Trace Portable RFID Kits

Ideal for asset tracking, the Track & Trace kit enables fast scanning and localisation of assets, automating inventory processes and improving efficiency.

Each kit includes:

- ▶ M610 or M611 label printer
- ▶ HH85 handheld RFID reader
- ▶ M6-221-423-UHF RFID labels
- ▶ M61-R6010 ribbon
- ▶ RFID encoding Toolbox and Express labels apps (free download)



Article No.	Order Ref.	Description
321829	M610-QY-EU-T&T KIT	M610 RFID Track & Trace kit QY EU
321835	M611-EU-T&T KIT	M611 RFID Track & Trace kit EU



Article No.	Order Ref.	Description
321277	M6-221-423-UHF	Glossy White Polyester RFID Asset Tracking Labels

Additional rolls of selected RFID labels available individually



Learn more at www.bradyeurope.com/RFIDkits



RFID SOFTWARE

Access real-time asset data.

Maximise the power of RFID with software that fits your business. Whether you need a ready-to-use platform, tailored integration, or developer tools, we provide flexible options to streamline tracking, inventory, and asset management.

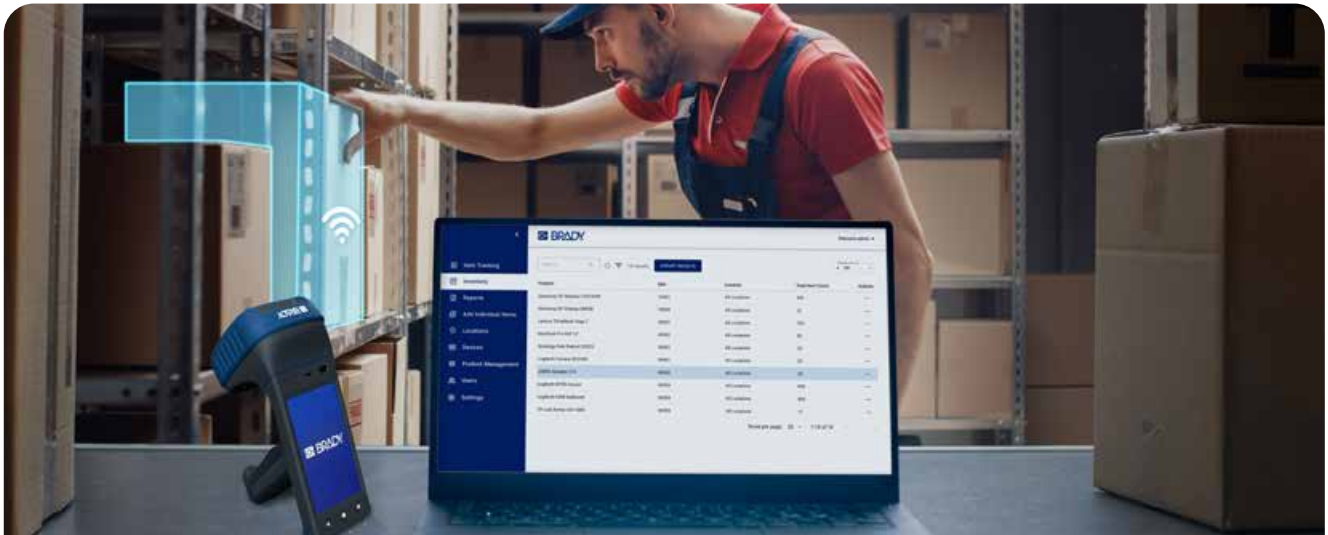
RADEA.IO RFID software

Automate inventory and item tracking in just one day with RADEA.IO. This intuitive, highly customisable RFID platform gives you real-time visibility of every tagged item, helping you locate assets, prevent loss, and improve efficiency.

Key Benefits:

- ▶ Create unlimited locations & sublocations
- ▶ Auto-assign SKUs to categories
- ▶ Generate custom reports
- ▶ Manage & configure RFID devices
- ▶ Cloud-based or on-premise
- ▶ API integration for system connectivity

Ideal for: Inventory audits, loss prevention, real-time tracking, automated counts, and smarter decision-making.



Bespoke RFID Software Development

Need a tailored solution? Our engineers can develop a custom application for Windows, Android, or web that connects RFID data to your existing infrastructure. Whether you need database connectivity, APIs, or a user-friendly dashboard, we create software that meets your exact requirements.

Software Development Kit (SDK)

For businesses with in-house developers, our SDK provides full access to Brady RFID hardware via the Nur API. Your team can build custom integrations, automate processes, and enhance system connectivity with maximum flexibility.



RFID LABELS

Every item a unique digital identity

Enhance efficiency and visibility with RFID labels that transform every item into a unique digital identity. Our advanced RFID labels provide real-time tracking and seamless inventory management across the supply chain, from manufacturing to end-users. As industry leaders in RFID label solutions, we offer unparalleled customisation, ensuring optimal performance for every application.



Unmatched reliability

Designed for durability in industrial environments, our RFID labels withstand extreme temperatures, chemicals, moisture, and abrasion.



Fit for every surface

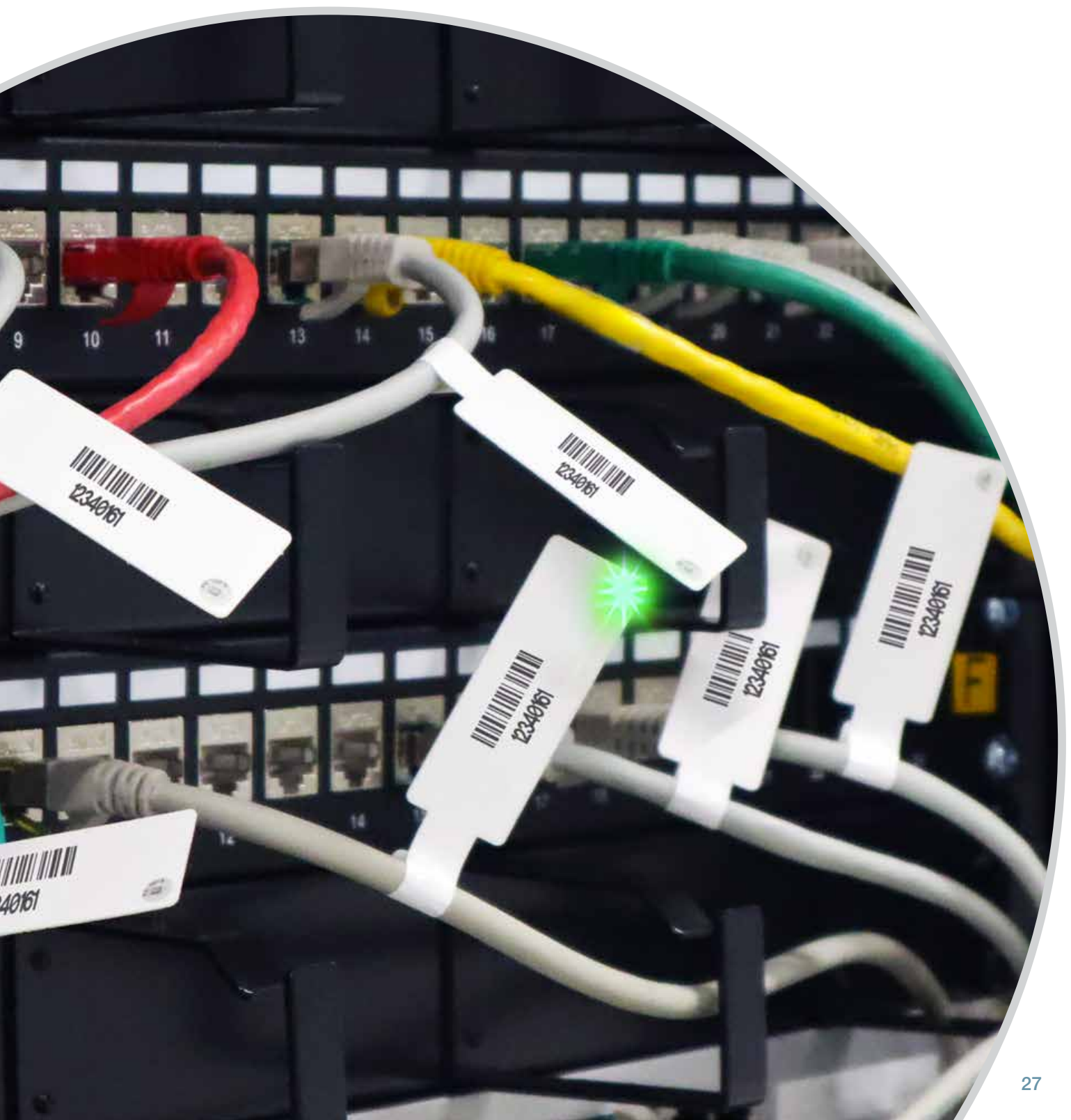
With the widest range of materials, adhesives, and inlays, we provide tailored RFID labels for any asset or application.



Cutting-edge technology

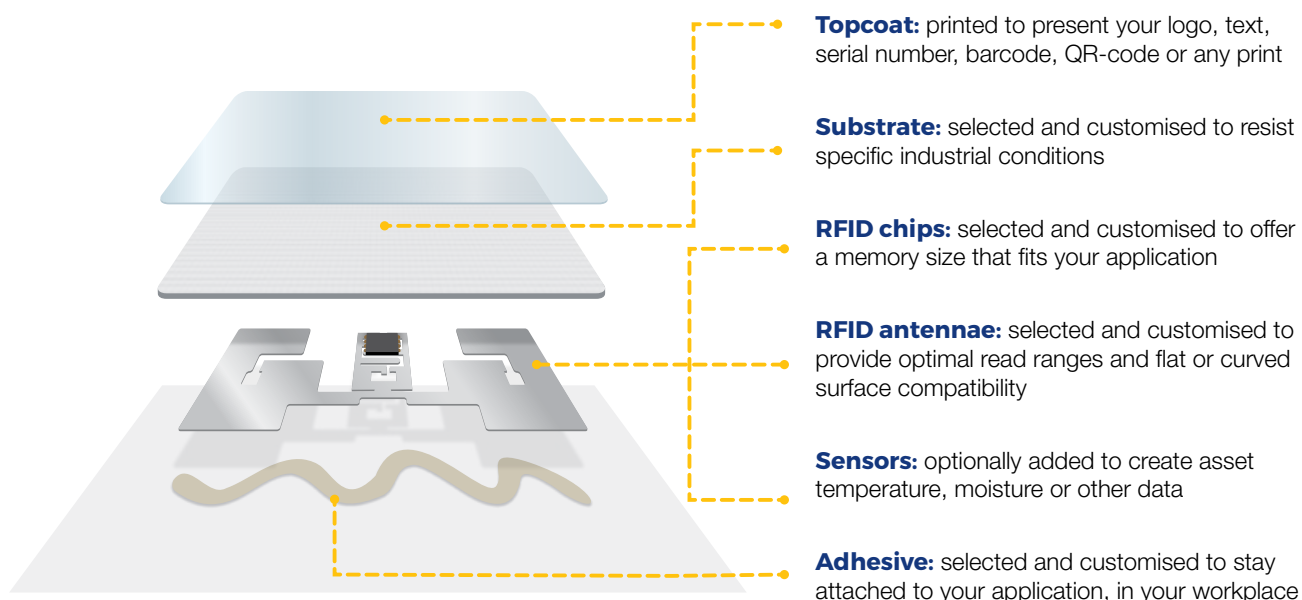
Our RFID labels integrate high-performance antennas, chips, and optional sensors to optimise tracking, sensing, and automation.





HOW RFID LABELS WORK

An RFID label consists of multiple components, each playing a critical role in data transmission and durability. Brady's expertise in material science ensures that each RFID label is engineered for maximum performance in demanding conditions.



Sensor options

Our RFID labels can do more than just track and trace. With integrated sensors, they can detect changes in the environment, providing valuable data for monitoring and safety.



Temperature Sensing

Temperature-sensitive RFID labels provide real-time temperature readings every time they interact with an RFID reader. These are used in logistics, pharmaceuticals and food industries to ensure goods remain within required temperature ranges.



Moisture Sensing

RFID labels with embedded moisture sensors can detect wet or dry conditions at specified intervals. They are useful for applications where moisture levels need to be monitored, such as in building materials, packaging or medical environments.

RFID technology options

RFID technology uses radio waves to communicate between a reader and an RFID label, enabling fast and automated identification of assets. Different types of RFID technologies are available, each with unique benefits.



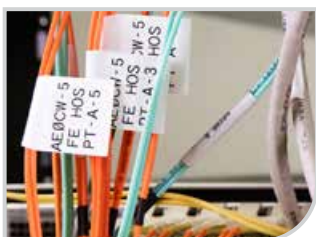
Ultra-High Frequency (UHF) RFID

UHF RFID labels are ideal for long-range detection and can be read from distances of up to 14 metres with fixed or handheld RFID readers. They are commonly used in logistics, warehousing and manufacturing to track assets efficiently without requiring a direct line of sight.



High Frequency (HF) and Near Field Communication (NFC) RFID

HF and NFC RFID labels are designed for close-range interactions. NFC, a subset of HF RFID, enables instant communication with smartphones and tablets. These labels are used for product authentication, consumer engagement and digital interaction by simply tapping a device to the label.



Dual Frequency RFID Labels

Combining both UHF and HF/NFC technologies in a single label, Dual Frequency RFID labels offer the best of both worlds: long-range asset tracking with UHF and close-range customer interaction with NFC. These labels are ideal for applications that require both supply chain management and end-user engagement.

LED for Pick-to-Light

LED-enabled RFID labels use the energy received from RFID readers to activate a small light on the label. This allows for fast and accurate item picking in warehouses and assembly lines by highlighting the correct item with a blinking LED.



A LABEL FOR EVERY RFID APPLICATION

Brady offers an extensive range of RFID labels for various industries and applications. We provide a wide selection of off-the-shelf RFID labels, ready to support your asset tracking, identification, and sensing needs.



Dual-Frequency RFID Labels

Enable both long-range and close-proximity scanning.



Track & Trace RFID Labels and Tags

Improve asset management and inventory control.



Moisture-Sensing RFID Labels

Detect and report moisture levels in real time.



LED RFID Labels

Enable pick-to-light systems for efficient item identification.



Temperature-Sensing RFID Labels

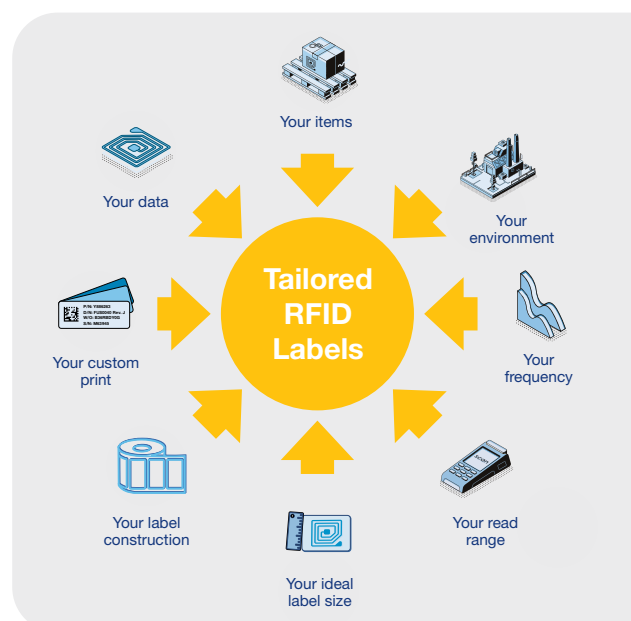
Monitor temperature-sensitive assets remotely.

Custom RFID labels tailored for your needs

In addition to our extensive off-the-shelf RFID label offerings, Brady excels in customisation. We can tailor every label component—from materials and adhesives to chips and antennas—to meet your specific requirements. Our experts design fully customised solutions to meet specific operational needs, backed by our in-house R&D capabilities and laboratory testing to ensure optimal performance

Several factors influence the ideal RFID label for your application, including:

- ▶ **Your environment** – Labels can be designed to withstand extreme temperatures, chemicals, abrasion, UV exposure, and moisture.
- ▶ **Your items** – Labels can be optimised for different surfaces, whether metal, plastic, or other materials.
- ▶ **Your read range and frequency** – Custom antenna designs ensure optimal performance for your required read distance and frequency (UHF, HF, NFC, or dual frequency).
- ▶ **Your data and print** – Choose the right chip, memory capacity, and print customisation to match your tracking and identification needs.
- ▶ **Your ideal label size and construction** – We can create labels in various formats, sizes, and constructions to ensure they fit seamlessly into your processes.



Track & Trace RFID Tags






These rigid tags are tuned to have specifically good on-metal functionality that, together with the slim structure, allows integration into a wide range of industrial applications. The IP68 encapsulation means the tags can withstand harsh conditions and maintain their performance over time.



Label reference	RGD-UHF-M-PET-85x21	RGD-UHF-M-PET-27x27
Article number	323497	323498
RFID type	UHF	UHF
Markets	Warehouse & logistics Manufacturing	Warehouse & logistics Manufacturing
Application	Asset tracking All-Purpose	Asset tracking All-Purpose
On-metal application	On-metal	On-metal
Quantity/roll	500	500
Dimensions	85 x 21mm	27 x 27mm
Read range	Up to 15.5m	Between 5 and 10 m
EPC memory	496 bits	496 bits
User memory	128 bit	128 bit
Operating temperature	-35°C to 85°C	-35°C to 85°C

Track & Trace RFID Labels and Tags









					
Label reference	THT-UHF-B481-24x16	THT-UHF-B7425-65x6-0.5	THT-UHF-B7425-45x30	THT-UHF-B7425-53x26	THT-UHF-B423-53x26
Article number	309083	312403	309082	309081	307923
RFID type	UHF	UHF	UHF	UHF	UHF
Markets	Laboratory	General Laboratory Healthcare	General Laboratory Manufacturing Healthcare	General Laboratory Manufacturing Healthcare Transport & Logistics	General Manufacturing Healthcare Transport & Logistics
Application	Medical slide labelling	Laboratory labelling	Product ID & Product life cycle ID Specimen & Laboratory labelling Large conical bottles, tubes and well plates	Product ID & Product life cycle ID Specimen & Laboratory labelling Large conical bottles, tubes and well plates Medical equipment ID Distribution & Warehousing	Product ID & Product life cycle ID Medical equipment ID Distribution & Warehousing
On-metal application	No	No	No	No	No
Quantity/roll	500	500	500	500	500
Dimensions	24 x 16mm	65 x 6mm	45 x 30mm	53 x 26mm	53 x 26mm
Face material	Polyester (B-481)	Polypropylene (B-7425)	Polypropylene (B-7425)	Polypropylene (B-7425)	Polyester (B-423)
Material reference	L-2899-4C	L-2588-35C	L-2588-19A	L-2588-26B	L-2588-26C
Read range	Up to 2m	Up to 1m	Up to 6m	Up to 10m	Up to 11m
EPC memory	128 bits	128 bits	448 bits	128 bits	128 bits
User memory	512 bits	/	2048 bits	/	/
Operating temperature	-40 °C to 85 °C	-40 °C to 85 °C	-40 °C to 85 °C	-40 °C to 85 °C	-40 °C to 85 °C

				
				
THT-HF-B423-25x43	THT-UHF-M-PET-45x8-0.8	THT-NFC-PET-25x25	THT-UHF/HF-B423-66x46	THT-UHF/HF-B423-33x17
311514	323730	309086	310251	310250
HF	UHF	NFC	NFC + UHF	NFC + UHF
General Manufacturing Transport & Logistics	General Manufacturing Data/Telecom	General Manufacturing Healthcare Data/Telecom	General Laboratory Manufacturing Healthcare Data/Telecom Transport & Logistics	General Laboratory Manufacturing Healthcare Data/Telecom Transport & Logistics
Product ID & Product life cycle ID Product Authentication Supply-chain management	RFID labelling Healthcare and Hospital labelling Asset tracking Inventory and inspection labelling	Product ID & Product life cycle ID	Product ID & Product life cycle ID Specimen & Laboratory labelling Medical equipment ID Distribution & Warehousing	Product ID & Product life cycle ID Specimen & Laboratory labelling Medical equipment ID Distribution & Warehousing
No	Yes	Yes	No	No
500	800	500	500	500
25 x 43mm	45 x 8mm	25 x 25mm	66 x 46mm	33 x 17mm
Polyester (B-423)	Polyester	Polyester	Polyester (B-423)	Polyester (B-423)
L-2588-31B	L-2588-52A	L-2588-25B	L-2588-27C	L-2588-27D
Up to 2cm	Up to 3.2m	Up to 2cm	Up to 5m (UHF) Up to 2cm (NFC)	Up to 2.8m (UHF) Up to 2cm (NFC)
/	128 bits	/	128 bits	480 bits
2560 bits	/	144 bytes	160 bits (UHF) 1920 bits (NFC)	2048 bits (UHF, HF)
-40 °C to 85 °C	-40 °C to 85 °C	-35 °C to 85 °C	-40 °C to 85 °C	-40 °C to 85 °C

Sensing RFID Labels



						
Label reference	THT-UHF-B423-93x26	THT-NFC-NM-B423-45X45-0.1-T	THT-NFC-M-B423-45X45-0.1-T	THT-UHF-B423-42x85	THT-UHF-B430-99x7-0.1	THTFP-UHF-NM-B7508-52X40-0.1-L
Article number	309085	321275	321276	311513	312401	323406
RFID type	UHF	NFC	NFC	UHF	UHF	UHF
Markets	General Manufacturing Warehousing Healthcare	General Manufacturing	General Manufacturing	General Manufacturing Construction Transport & Logistics	Transport & logistics Warehousing	Data centres Telecom installations
Application	Temperature monitoring	Temperature monitoring	Temperature monitoring	Moisture sensing Leak detection Water proofing	RFID labelling General identification Asset tracking	RFID labelling General identification Asset tracking Inventory and inspection labelling
On-metal application	No	No	Yes	No	No	No
Quantity/roll	100	100	100	100	100	100
Dimensions	93 x 26mm	45 x 45mm	45 x 45mm	42 x 85mm	99 x 7mm	52 x 40 mm
Face material	Polyester (B-423)	Polyester (B-423)	Polyester (B-423)	Polyester (B-423)	Polyester (B-430)	Polypropylene
Material reference	L-2899-8A		L-2588-31B	L-2588-32A	L-2588-35A	L-2588-50B
Read range	Up to 9m	Up to 5cm	Up to 5cm	Up to 2.7m	Up to 15.5m	Up to 15.5m
EPC memory	128 bits	/	/	96 bits	160 bits	160 bits
User memory	176 bits	320 bytes	320 bytes	2000 bits	1312 bits	1312bits
Operating temperature	-40 °C to 85 °C	-40 °C to 85 °C	-40 °C to 85 °C	-40 °C to 85 °C	-40 °C to 85 °C	-40 °C to 85 °C

TAILORED INSTALLATION and expert support

A robust RFID solution is more than just hardware and software—it's about ensuring smooth deployment and long-term reliability. From proof of concept to full implementation and ongoing support, our team provides hands-on expertise to integrate, optimise, and maintain your RFID system. Whether you need installation, troubleshooting, or repairs, we're here to keep your solution running at its best.



Hardware installation

Proof of concept

To enable optimal decision making, to test and to finetune your RFID setup, we offer a proof of concept and/or a pilot deployment at your premises. Invite your stakeholders and solution users to experience first hand the advantages of automated item tracking, fast asset localisation, automated inventories and much more.

Complete installation

With an agreed-on proof of concept, we start implementing and connecting the RFID readers that will enable your automated tracking solution. In addition, we can install any software, both on readers and computers, to integrate your RFID solution in existing ICT infrastructure.

We can also equip your facilities with the capability to print and program additional RFID labels, and provide training to users.



Support

Our support team, composed of experienced developers and hardware specialists, is dedicated to keeping your RFID solution running smoothly. They will investigate, analyse and solve any challenges you might encounter during the lifetime of your solution.

Our experienced developers know your Brady RFID configuration inside out, and can walk you through a series of steps to quickly solve your issue. Most issues are solved based on pictures of applied RFID labels in your business context. If necessary, our support team can help write new source code to enable integration of your RFID system with specific applications.

tseurope@bradycorp.com



Repairs

Our technical repairs team can solve any RFID hardware issues you might encounter, including RFID reader battery and antenna replacement. We will test and analyse returned RFID equipment in our laboratories to solve hardware challenges and to send your solution back in full working order.

- ▶ Free repairs within the 2-year warranty period
- ▶ Ship back for complete testing
- ▶ Remote intervention via API or on-site support
- ▶ Service Level Agreements available for larger RFID configurations
- ▶ Product lifetime support (end of life date + 5 years)

tseurope@bradycorp.com

**Belgium & Luxembourg**

+32 (0) 52 45 78 11
benelux@bradycorp.com

Czech Republic

+420 776 302 229
czechrepublic@bradycorp.com

Denmark

+45 66 14 44 00
denmark@bradycorp.com

France

+33 (0) 3 20 76 94 48
france@bradycorp.com

Germany, Austria & Switzerland

+49 (0) 6103 7598 660
germany@bradycorp.com

Hungary

+36 23 500 275
hungary@bradycorp.com

Italy

+39 02 26 00 00 22
italy@bradycorp.com

Netherlands

+31 (0)70 323 62 98
benelux@bradycorp.com

Norway

+47 70 13 40 00
norway@bradycorp.com

Poland

+48 22 104 6262
poland@bradycorp.com

Qatar, Saudi Arabia & UAE

+971 4881 2524
me@bradycorp.com

Slovakia

+421 902 939 406
slovakia@bradycorp.com

South Africa

+27 11 704 3295
africa@bradycorp.com

Spain & Portugal

+34 900 902 993
spain@bradycorp.com
portugal@bradycorp.com

Sweden, Finland, Estonia, Latvia, Lithuania

+46 (0) 8 590 057 30
sweden@bradycorp.com

Turkey

+90 212 264 02 20
turkey@bradycorp.com

UK & Ireland

+44 (0) 1295 228 288
uk@bradycorp.com

We make products that make the world a safer and smarter place. From the depths of the ocean to outer space, from the factory floor to the delivery room - **we're just about everywhere you look.**



To help minimise our impact on the environment, Brady limits its number of reprints.

Updated versions are always available for download on bradyeurope.com/downloads.



Search for: EUR-M-322-EN



Y6059199

Your distributor

24/04/2025