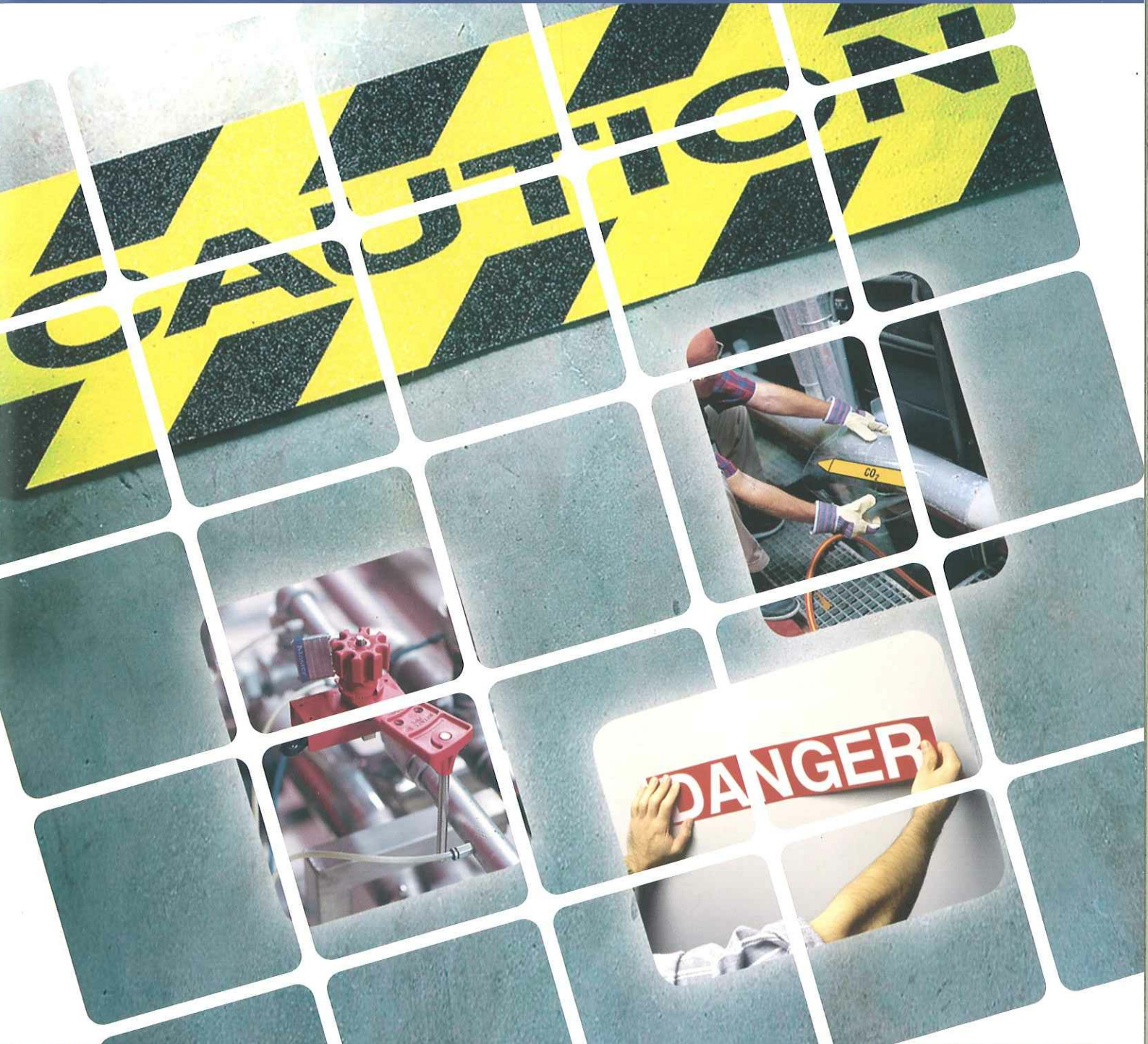




Solutions for Safe Plants

Increased Workplace Safety means Higher Productivity



Lockout Devices,
Tags, Padlocks

Pipe Marking

Printers for Safety Sign
Making and Pipe
Marking

BRADY Lockout & Tagout Program

Mechanical Risk



Universal Valve Lockout

Excellent universal device
 Modular construction:
 - locking arms
 - cable attachment



Mini cable Lockout

Fits in palm of hand
 Internal storage of cable
 For valves and electrical installations



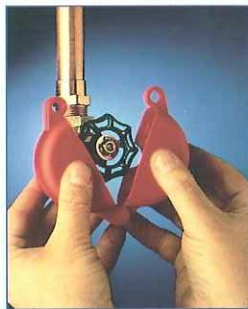
Ball Valve Lockout Devices

4 different colours
 2 sizes
 Polypropylene made



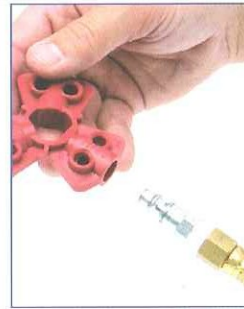
All Purpose Cable Lockout

For wide range of valves and switches
 Lightweight and ergonomic
 Plastic & metal cable



Gate Valve Lockout

Various colours
 Various sizes
 Adjustable version available



Pneumatic Lockout Device

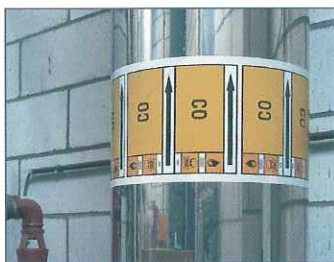
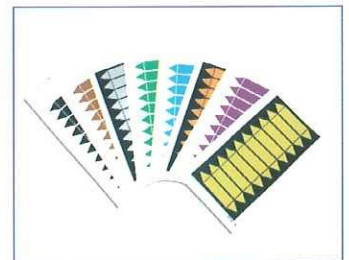
small, simple, effective
 fits on 3 different sized nozzles
 quick to apply

BRADY Pipe Marking



Brady Snap-on

An excellent way of marking wet, oily, or rusty pipes.
 Stick the self-adhesive marker to the transparent PVC "snap-on" cover, then open it out and "snap" it around the pipe.
 Also ideal for pipes which are frequently changing ID.
 3 sizes available

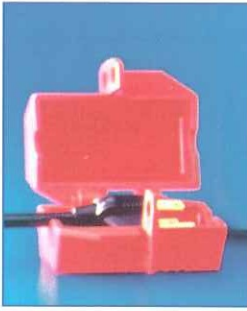


Maxi markers

Ideal for pipes over 350 mm in diameter
 Made from laminated polyester (B-7541)
 Supplied roll mounted
 15 m rolls = 55 markers / 30 m rolls = 120 markers
 Keep winding around the pipe until it is identified all the way around.
 Available in a linerless format in laminated polyester (B-7520)



Electrical Risk



Devices for Plug Connections

Prevent electrical plug from being connected
Different sizes available



480 – 600V Lockout

Miniature and Standard
Circuit Breaker Lockout



Hasps

Wide variety of types
Non-conductive Hasps
- resistant to cracking
- for high/low temperatures

BRADY Padlocks



Safety Padlocks
Laminated Steel Padlocks
Aluminium Padlocks
Brass "INOX" Padlocks
Non-Conductive Padlocks

BRADY Tagouts



Warning Tags
Safety Tags
Magnetic Tags
Safety Labels for Machinery

Pipe markers on a card

Colours comply with BS1710
Substance can be written on the card using a marker pen.
Sold per card (10 markers per card)
8 colours available
Size: 75 mm x 16 mm each



XXL Pipe Markers

Ideal for pipes that can only be viewed from a distance
980 mm x 95 mm
Made from laminated polyester (B-7541)
Character height 55 mm
Max. No of characters: 15 with symbols / 18 without symbols

Mini Markers

For small pipes
12 mm x 150 mm
Sold per card (5 markers per card)
Letter height 6.5 mm
Made from a thin, flexible polyester, (B-7548)
You choose the format



Symbols and Pipe Markers on rolls

Roll with symbols is 33 m long and 50 mm wide
500 symbols per roll, Label size 46 mm x 64 mm,
10 formats available
Made from laminated polyester (B-7541)
Pipe Marker on a Liner
Linerless Pipe Markers

Do-It-Yourself Pipe Marking and Sign Making



HandiMark

Media width from 13 up to 50 mm,
print area max 48 x 800 mm
Monochrome printing, single colour,
resolution 203 dpi, PC connection COM
Portable – hand-held
Barcode printing



PowerMark

Media width from 100 up to 250 mm,
print area max 220 x 5000 mm
Multicolour, resolution 300 dpi,
PC connection LPT
Stand alone, keyboard
More than 600 built-in symbols
Barcode printing



GlobalMark Monocolor / Multicolor / Color & Cut

Media width from 13 up to 105 mm, print area
max 94 x 2500 mm
300 dpi resolution, PC connection COM and USB
Stand Alone, LCD TOUCHSCREEN
More than 700 built-in symbols
Barcode printing



MiniMark

Easy to attach to a PC
Print speed up to 4" per second (faster than any
other models)
It can print on both Die-cut and continuous labels
Uses Markware™ software

Brady Corporation Limited

Wildmere Industrial Estate
Banbury
Oxon
OX16 3JU

Tel: 01295 228288

Fax: 01295 228219

email: csuk@bradyeurope.com