



## Regulations - Canada

Canada is legislated both Federally and Provincially. Wherever possible Federal Legislation is referenced, however users should be aware of specific Provincial Legislation and bodies with Offshore jurisdiction like the Canadian Association of Petroleum Producers (CAPP).

Canadian Occupational Health & Safety Regulations (Canadian Labour Code) Specifically;

Part 3, section 3.12, Temporary Structures and Excavations.

Part 4, Elevating Devices, 4.5 inspection and testing (b) after alteration (c) Every 12 months, 4.6 (i) record every inspection (a) be signed by person undertaking test (b) include date of inspection.

Part 8, Electrical Safety, 8.13 (i) (II) Locked Out, (III) Bears a distinctive tag

Part 10, Hazardous Substances, 10.27 (b) the hazardous information in respect of the substance.

Part 11, Confined Spaces, part (XI) (XII)

Part 12, Safety Materials, Equipment, Devices and Clothing 12.17 tag as unsafe and remove from service.

Part 13, Tools and Machinery, 13.10 tag as unsafe and remove from service

## Provincial Government Website Contacts:

**Government of Alberta**  
Alberta Employment, Immigration and Industry  
Tel.: 1-866-415-8690  
<http://www.gov.ab.ca/>

**Government of British Columbia**  
Workers' Compensation Board  
Tel: (604) 276-3100  
<http://www.worksafebc.com/>

**Government of Manitoba**  
Manitoba Labour and Immigration  
Tel.: (204) 945-3450  
<http://www.gov.mb.ca/labour/>

**Government of New Brunswick**  
Workplace Health Safety and Compensation Commission  
(506) 453-2467  
<http://www.whscc.nb.ca/>

**Government of Newfoundland and Labrador**  
Department of Government Services  
(709) 729-5548  
<http://www.gov.nl.ca/gs/ohs>

**Governments of the Northwest Territories and Nunavut**  
Workers' compensation Board  
Tel.: 1-800-661-0782 or 1-867-669-4407  
<http://www.wcb.nt.ca/>

**Government of Nova Scotia**  
Department of Environment and Labour  
Tel.: (902) 424-5400  
<http://www.gov.ns.ca/enla/healthandsafety/>

**Government of Ontario**  
Ministry of Labour  
Tel.: 1-800-268-8013  
<http://www.labour.gov.on.ca/index.html>

**Government of Prince Edward Island**  
Workers' Compensation Board  
Tel.: (902) 368-5562  
<http://www.wcb.pe.ca/>

**Government of Québec**  
Commission de la santé et de la sécurité du travail  
Tel.: (514) 906-3080  
<http://www.csst.qc.ca/>

**Government of Saskatchewan**  
Department of Labour  
Tel.: (306) 787-4539  
<http://www.labour.gov.sk.ca/>

**Government of the Yukon Territories**  
Workers' Compensation Health and Safety Board  
Tel.: (867) 667-5450  
<http://www.wcb.yk.ca/>



**CHEMTAG®** identifies and controls hazardous substances and assists with the requirements of CFR 1910.1200 (A) (1). CHEMTAG® places first response information at the location where immediate access is needed.  
*Please refer to your local legislation for further guidelines.*



Product No.	Catalogue No.	Description	Qty./UOM	Colour	Size
104131	CHEM-CTHUSA01	Chemtag Holder	10/BOX	White	11 1/4" x 6"
104132	CHEM-CTI500	Chemtag Inserts	100/PK	Red/Black/Blue/Yellow	5 3/4" x 7 5/8"
104133	CHEM-CTI502	Chemtag Inserts	100/PK	Red/Black/Blue/Yellow	5 3/4" x 7 5/8"
104134	CHEM-CTSH	Chemtag Kit			

\*Kit includes 10 holders, 10 inserts and 1 pen

**UNITAG™** is designed for the identification and qualification of lifting equipment, industrial plant, valves and calibration equipment, as well as a variety of other applications including safety harnesses. The UNITAG™ holder has a unique, permanent locking system which ensures fixing to all equipment. Optional standard inserts are available in a variety of colours. Also available with metal strap. UNITAG™ helps with the requirements of CFR 1910.184 (d), (e) (3) (ii), (iii)

*Please refer to your local legislation for further guidelines.*

Product No.	Catalogue No.	Description	Qty./UOM	Colour	Size
104165	UNI-UNH 12 P	Unitag Kit*	1/KIT		
104166	UNI-UNH 9 S	Unitag Steel Strap Kit*	1/KIT		
104167	UNI-UNI503 B	Unitag Safety Harness Inserts	100/PK	Blue	1 3/4" dia

\*Kits include 20 holders, 20 straps and 1 pen



**ENTRYTAG®** is designed to work in conjunction with existing permit to work systems and assist with the requirements of CFR 1910.146 (c) (2), (d) (11) and (f) (2). ENTRYTAG® acts as a visual reminder to authorized personnel and assists in instructing non authorized personnel of the critical requirements contained within the permit to work. The system clearly states the minimum requirements of entry to the confined space or whether the area is in prohibition and cannot be entered.

*Please refer to your local legislation for further guidelines.*

Product No.	Catalogue No.	Description	Qty./UOM	Colour	Size
104119	ENT-ETSH157	Entrytag Holder	10/BOX	White	11 1/4" x 6"
104120	ENT-ETSI532	Entry Tag Standard Inserts	100/PK	Green	5 3/4" x 7 5/8"
107967	MUL-IETLL230	Man In Tank Tag	100/PK	Yellow	2" x 6 1/2"
104121	ENT-ETSH157A	Entry Tag Kit*	1/KIT		

\*Kit includes 10 holders, 20 inserts and 1 pen

**BRADY** WHEN PERFORMANCE MATTERS MOST™

## Learn more about Brady's line of Safety, Facility & Equipment Identification Products.



### Pipe & Valve Identification

Identify pipe content and flow direction with Brady's performance pipe markers and valve tags: helps satisfy ASME (ANSI) standards. For more information request Brady's Pipe & Valve Identification catalogue.

### Commercial Grade Signs

Brady has developed a new line of commercial grade signs to meet the needs of customers who need durable, weather-resistant safety signs for light industrial and commercial applications. This new line of aluminum, plastic and self-sticking vinyl signs provides a cost-effective alternative for many applications ... especially environments where exposure to abrasion, UV-light and chemicals is moderate. Request a copy of Brady's Commercial Grade Signs brochure today!

### Safety, Facility, Equipment Identification S-25

Brady's full line safety catalog identifies and protects products, people, and premises with high performance products including Health & Safety Signs, Traffic Control, Visual Warnings, Printers, Software, Pipe & ID Tags, Labels and Lockout/Tagout. Request a copy of Brady's 484 full line safety catalogue today!

[WWW.BRADYCANADA.COM](http://WWW.BRADYCANADA.COM)

**Brady Canada**  
355 Apple Creek Blvd.  
Markham, ON L3R 9X7  
1-800-263-6179 [www.bradycanada.com](http://www.bradycanada.com)

© 2007 Brady Worldwide, Inc. All Rights Reserved.

**BRADY**  
WHEN PERFORMANCE MATTERS MOST™

**BRADY**  
WHEN PERFORMANCE MATTERS MOST™

INSPECTION  
TAGGING SYSTEMS

[WWW.BRADYCANADA.COM](http://WWW.BRADYCANADA.COM)





**SCAFFTAG®** is a complete scaffolding management system comprising durable, high visibility, weatherproof holders and inserts. SCAFFTAG® fits all standard scaffolding while SCAFFTAG® II, with its larger attachment port, is suitable for system scaffold components.

- **SCAFFTAG®** provides system, procedural and legal compliance
- User friendly and weather resistant
- Saves valuable time when preparing safety audits
- Provides a clear inspection trail giving integrity and control of work carried out
- Essential for companies working with ISO9000 clients
- Choice of sizes and inserts with ability to bar code and/or customize

Please refer to your local legislation for further guidelines.



Three simple stages form the basis of the Scafftag® system

1. Under construction or failed inspection
2. Construction complete. Green face, fit for use.
3. Statutory inspections at regular intervals as per regulations and recorded on insert.

Product No.	Catalogue No.	Description	Qty./UOM	Colour	Size
104111	SCAF-STH132	Holders	10/Box	White	11 3/4" x 3 1/2"
104112	SCAF-STH146	Holders	10/Box	Red	11 3/4" x 3 1/2"
104113	SCAF-STSI593	Inspection Inserts	100/Pkg	Green	3 1/4" x 7 5/8"
104114	SCAF-STSI594	Caution Inserts	100/Pkg	Yellow	3 1/4" x 7 5/8"
104115	SCAF-STH132A	Standard Kit*	1/Kit	White	
104116	SCAF2-STHUSA	Scafftag II Holder	10/Box	White	11 1/2" x 6"
104117	SCAF-STSI751	Inspection Scafftag Inserts 100/Pkg	100/Pkg	Green	5 3/4" x 7 5/8"
104118	SCAF2-STHUSAA	Scafftag II Kit*	1/Kit		

\*Kits include 10 Holders, 20 Inserts and 1 Pen



104111 - Holder 104114 - Caution Insert  
Holders are 11 3/4" x 3 1/2", made of plastic & available in Red or White.

Inserts are 3 1/4" x 7 5/8" and made of polyester

## SCAFFTAG®

These tags meet Canadian Code of Practice requirements. Please refer to your Province for specific regulations. Internationally used and recognized, Brady Inspection Tagging systems are designed to the highest specification to endure tough industrial application and the harshest environment. All our systems are easy to use and provide system, procedural and compliance.



Product No.	Catalogue No.	Description	Qty./UOM	Colour	Size
108348	SCAF-CAISP100	SP Purpose Caution	100/Pkg	Wht/Brn & Blk/Ylw	3 1/4" x 7 5/8"
108349	SCAF-CAIHD100	Heavy Duty Caution	100/Pkg	Blk/Blue & Blk/Ylw	3 1/4" x 7 5/8"
108350	SCAF-CAIMD100	Medium Duty Caution	100/Pkg	Blk/Org & Blk/Ylw	3 1/4" x 7 5/8"
108351	SCAF-CAILD200	Light Duty Caution	100/Pkg	Blk/Pink & Blk/Ylw	3 1/4" x 7 5/8"
108352	SCAF-CAISP200	SP Purpose Ready	100/Pkg	Wht/Brn & Wht/Grn	3 1/4" x 7 5/8"
108353	SCAF-CAIHD100	Heavy Duty Ready	100/Pkg	Blk/Blue & Wht/Grn	3 1/4" x 7 5/8"
108354	SCAF-CAIMD200	Medium Duty Ready	100/Pkg	Blk/Org & Wht/Grn	3 1/4" x 7 5/8"
108355	SCAF-CAILD200	Light Duty Ready	100/Pkg	Blk/Pink & Wht/Grn	3 1/4" x 7 5/8"

\*Use holders shown on previous page - Cat.#'s 104111 and 104112

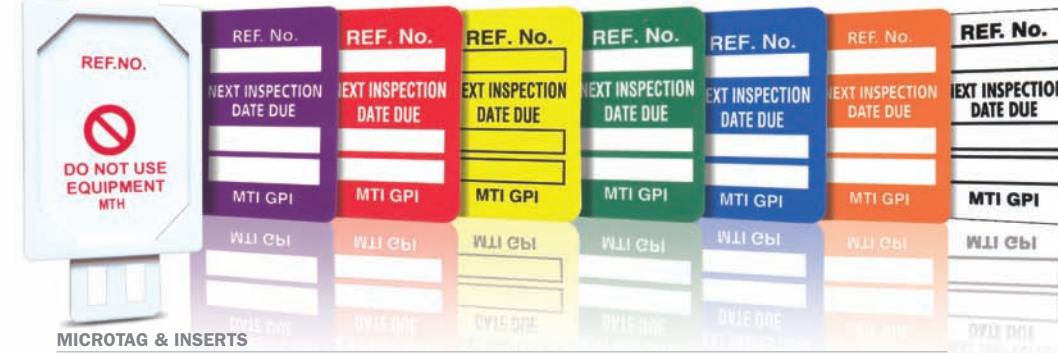


Product No.	Catalogue No.	Description	Qty./UOM	Colour	Size
108356	SCAF-CAISP100F	SP Purpose Caution FR	100/Pkg	Wht/Brn & Blk/Ylw	3 1/4" x 7 5/8"
108357	SCAF-CAIHD100F	Heavy Duty Caution FR	100/Pkg	Blk/Blue & Blk/Ylw	3 1/4" x 7 5/8"
108358	SCAF-CAIMD100F	Medium Duty Caution FR	100/Pkg	Blk/Org & Blk/Ylw	3 1/4" x 7 5/8"
108359	SCAF-CAILD100F	Light Duty Caution FR	100/Pkg	Blk/Pink & Blk/Ylw	3 1/4" x 7 5/8"
108360	SCAF-CAISP200F	SP Purpose Ready FR	100/Pkg	Wht/Brn & Wht/Grn	3 1/4" x 7 5/8"
108361	SCAF-CAIHD200F	Heavy Duty Ready FR	100/Pkg	Blk/Blue & Wht/Grn	3 1/4" x 7 5/8"
108362	SCAF-CAIMD200F	Medium Duty Ready FR	100/Pkg	Blk/Org & Wht/Grn	3 1/4" x 7 5/8"
108363	SCAF-CAILD200F	Light Duty Ready FR	100/Pkg	Blk/Pink & Wht/Grn	3 1/4" x 7 5/8"

\*Use holders shown on previous page - Cat.#'s 104111 and 104112

**MICROTAG®** is a safety system which is particularly useful for identifying small plant, equipment, lifting gear and safety harnesses. Colour coded and date qualified, the system also has the facility to render equipment in a 'prohibition status' should it be found to be faulty between inspection dates. Meets the requirements for OSHA CFR 1926.502 (d) (21) Personal Fall Arrest systems.

Please refer to your local legislation for further guidelines.



### MICROTAG & INSERTS

Product No.	Catalogue No.	Description	Qty./UOM	Colour	Size
104143	MIC-MTHSTD04	Microtag Kit*	1/Kit		
104144	MIC-MTIGP B	Next Test Date Inserts	100/PK	Blue	1 7/8" x 1 1/4"
104145	MIC-MTIGP G	Next Test Date Inserts	100/PK	Green	1 7/8" x 1 1/4"
104146	MIC-MTIGP O	Next Test Date Inserts	100/PK	Orange	1 7/8" x 1 1/4"
104147	MIC-MTIGP P	Next Test Date Inserts	100/PK	Purple	1 7/8" x 1 1/4"
104148	MIC-MTIGP R	Next Test Date Inserts	100/PK	Red	1 7/8" x 1 1/4"
104149	MIC-MTIGP W	Next Test Date Inserts	100/PK	White	1 7/8" x 1 1/4"
104150	MIC-MTIGP Y	Next Test Date Inserts	100/PK	Yellow	1 7/8" x 1 1/4"
104151	MIC-MTIGP B	Next Inspection Date Due	100/PK	Blue	1 7/8" x 1 1/4"
104152	MIC-MTIGP G	Next Inspection Date Due	100/PK	Green	1 7/8" x 1 1/4"
104153	MIC-MTIGP O	Next Inspection Date Due	100/PK	Orange	1 7/8" x 1 1/4"
104154	MIC-MTIGP P	Next Inspection Date Due	100/PK	Purple	1 7/8" x 1 1/4"
104155	MIC-MTIGP R	Next Inspection Date Due	100/PK	Red	1 7/8" x 1 1/4"
104156	MIC-MTIGP W	Next Inspection Date Due	100/PK	White	1 7/8" x 1 1/4"
104157	MIC-MTIGP Y	Next Inspection Date Due	100/PK	Yellow	1 7/8" x 1 1/4"
104158	MIC-MTIUSA B	Date Inspected	100/PK	Blue	1 7/8" x 1 1/4"
104159	MIC-MTIUSA G	Date Inspected	100/PK	Green	1 7/8" x 1 1/4"
104160	MIC-MTIUSA O	Date Inspected	100/PK	Orange	1 7/8" x 1 1/4"
104161	MIC-MTIUSA P	Date Inspected	100/PK	Purple	1 7/8" x 1 1/4"
104162	MIC-MTIUSA R	Date Inspected	100/PK	Red	1 7/8" x 1 1/4"
104163	MIC-MTIUSA W	Date Inspected	100/PK	White	1 7/8" x 1 1/4"
104164	MIC-MTIUSA Y	Date Inspected	100/PK	Yellow	1 7/8" x 1 1/4"

\*Kit includes 20 holders, 40 cables ties and 1 pen

**FORKLIFT™ Tag** assists with the requirements of 1910.178 (q) (7) pre use preventative maintenance and safety inspection for forklift trucks. The FORKLIFT™ holder is permanently attached to the cage of the forklift truck and displays the prohibition sign and the script "DO NOT USE". The FORKLIFT™ insert shows in written and graphic format the daily or pre shift, inspections that should be carried out by the first user. The reverse of the insert has the facility for the inspector to date and sign after completion of the task. Should the inspection indicate faults the insert should be removed to display the prohibition sign and the truck must not be used until repaired and re-inspected safe. Please refer to your local legislation for further guidelines.

### FORKLIFT

Product No.	Catalogue No.	Description	Qty./UOM	Colour	Size
104128	FL-ETSH9	Forklift Holder	10/BOX	White	11 1/2" x 6"
104129	FL-ETSI51	Forklift Inserts	100/PK	Blue/Yellow	5 3/4" x 7 5/8"
104130	FL-ETSH9A	Forklift Kit*	1/Kit		

\*Kit includes 10 holders, 10 status inserts and 1 pen

**BRADY** WHEN PERFORMANCE MATTERS MOST™

**LADDERTAG™** is a complete ladder safety management system. Regulations require ladders to be checked for damage, faults and wear before use by an authorized user, and may assist with the requirements of CFR 1926.1053 (a) (12), (b) (17) (i) (ii) and CFR 1910.25 (d) (1) (X)

Please refer to your local legislation for further guidelines.

### LADDERTAG

Product No.	Catalogue No.	Description	Qty./UOM	Colour	Size
104125	LAD-EITH12	Laddertag Holder	10/BOX	White	2 1/4" x 8 1/4"
104126	LAD-EITL521	Laddertag Inserts	100/PK	Yellow	2" x 6 1/2"
104127	LAD-EITH/L12	Laddertag Kit*	1/Kit		

\*Kit includes 10 holders, 10 inserts and 1 pen



**NANOTAG™** is a safety management tagging system, purpose designed for the identification and qualification of industrial equipment which has minimal attachment space such as eyebolts and shackles, hoses and cables, breathing apparatus and small portable tools. While its form is designed to fit to the smallest of industrial applications, NANOTAG™ still utilizes the dynamic holder and inserts system. This has the same principles as the rest of the SCAFFTAG® range, delivering up-to-date inspection information.

NANOTAG™ provides total flexibility with the options for cable tie, ring, rivet and screw attachment all accommodated within one system. The system provides maximum visibility at the point of use, is weatherproof, UV protected, and durable to withstand the toughest industrial environments

Please refer to your local legislation for further guidelines.

### NANOTAG HOLDER

Product No.	Catalogue No.	Description	Qty./UOM	Colour	Size
104135	NAN-H	Nanotag Holders*	1/Kit		

### INSERTS

Product No.	Catalogue No.	Description	Qty./UOM	Colour	Size
104136	NAN-GP B	Blue Nanotag Inserts	100/PK	Blue	1 1/4" x 5/8"
104137	NAN-GP G	Green Nanotag Inserts	100/PK	Green	1 1/4" x 5/8"
104138	NAN-GP O	Orange Nanotag Inserts	100/PK	Orange	1 1/4" x 5/8"
104139	NAN-GP P	Purple Nanotag Inserts	100/PK	Purple	1 1/4" x 5/8"
104140	NAN-GP R	Red Nanotag Inserts	100/PK	Red	1 1/4" x 5/8"
104141	NAN-GP W	White Nanotag Inserts	100/PK	White	1 1/4" x 5/8"
104142	NAN-GP Y	Yellow Nanotag Inserts	100/PK	Yellow	1 1/4" x 5/8"

\*Kit includes 20 holders, 40 cable ties and 1 pen

Nanotag inserts are 1 1/4" x 5/8" and made of vinyl

**MULTITAG®** assists with the identification and preventative maintenance requirements of a range of equipment, and may assist with the requirements of CFR 1926.1053 (a) (12), (b) (17) (i) (ii) and CFR 1910.25 (d) (1) (X) US Patent # 314,016

Please refer to your local legislation for further guidelines.

### MULTITAG

Product No.	Catalogue No.	Description	Qty./UOM	Colour	Size
104122	MUL-EITHUSA01	Multitag Holder	10/BOX	White	2 1/4" x 8 1/4"
104123	MUL-EITL535	Multitag Inserts	100/PK	Green	2" x 6 1/2"
104124	MUL-EITHUSA01A	Multitag Kit	1/Kit		

\*Kit includes 10 holders, 10 inserts and 1 pen

