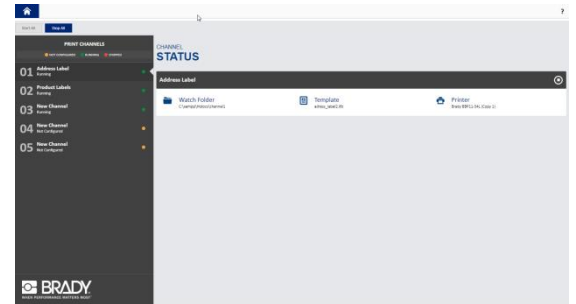


SOFTWARE SPOTLIGHT

5 simple steps to automation

Are you tired of re-typing information that is already in your ERP system to create a label? Can you export this information to a CSV file? If the answer is yes, it's time to automate your labelling process!

Brady Workstation Data Automation enables you to automate your labelling process in just 5 steps! The only requirement is that your existing system allows data exportation with a CSV file, preferably through a process trigger. For example: an operator presses a "Print Labels" button and this will render and store a CSV file in a specific location.



5 steps to automation

Brady Workstation Data Automation will guide you through setting up your own automated channels in 5 steps. Brady Workstation Data Automation can handle multiple channels at once.

One channel is a combination of

- A folder where the CSV file is saved, which is monitored for incoming files
- A label template to receive the data for printing
- A mapping of fields and corresponding data in the CSV file
- A designated printer



Each channel needs to have its own LabelMark™ 6 label template and location. One printer can accommodate multiple channels, as long as it can print the labels using the same label consumable. Label layout can be different, but the label format the printer will print on, must be the same.



SOFTWARE SPOTLIGHT

1



Watch Folder
Select a watch folder.

The **first step** is to define the location to watch for incoming files. This location is called the 'Watch Folder'.

In this step, you can select which type of files Data Automation needs to look for (for example: all files with a .txt extension)

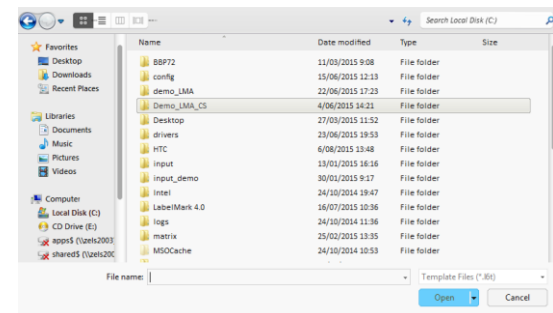
You can select what needs to happen with the data file after it is processed. You can select to delete the file or to move and save it in a specific location to keep track of what you have printed.

2



Template File

The **second step** opens a "Browse" dialog allowing you to select the LabelMark 6 label template you are going to use in this channel.



3



Map Fields

In **step 3**, the mapping phase, you connect each field on the label to a field in your file.

Firstly, you need to define if your file will have column headers and which delimiter (like a comma) you will use to separate data.

Secondly, assign the correct data columns to the corresponding label fields using the drop down boxes.



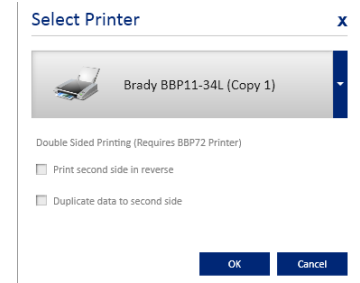
SOFTWARE SPOTLIGHT

4



Printer

In **step 4**, you select the printer you want to use. Keep in mind that the printer driver needs to be installed on the machine using Brady Workstation Data Automation before you can select your printer of choice from the drop down list. When you are using the BBP72, select the desired value for double sided printing.



5



Start

The **only thing left to do**, is pressing the start button to start the automated channel. Whenever a file is saved in the watch folder location you selected in step 1, the system will take it, parse it, place the information on the label and print it.