

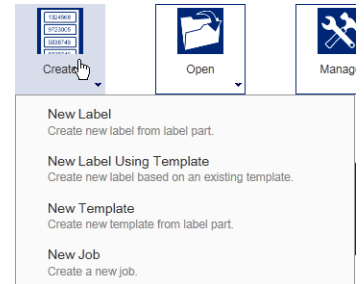


LabelMark 6 Spotlight: Using Flip Flop Functionality

[Spotlights on]

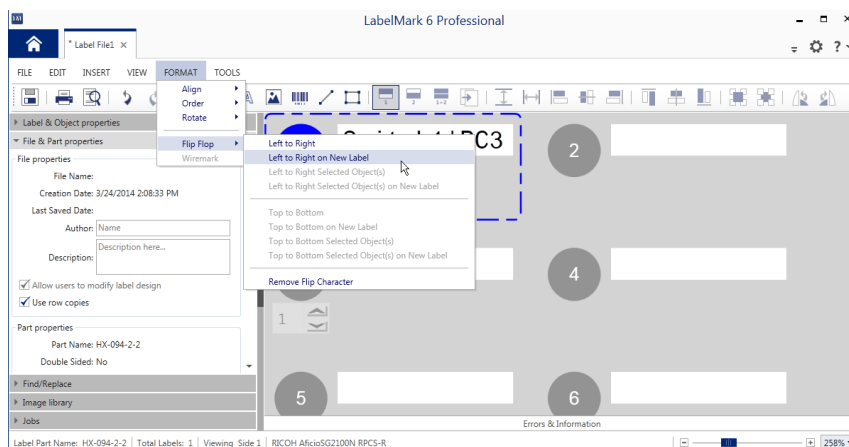
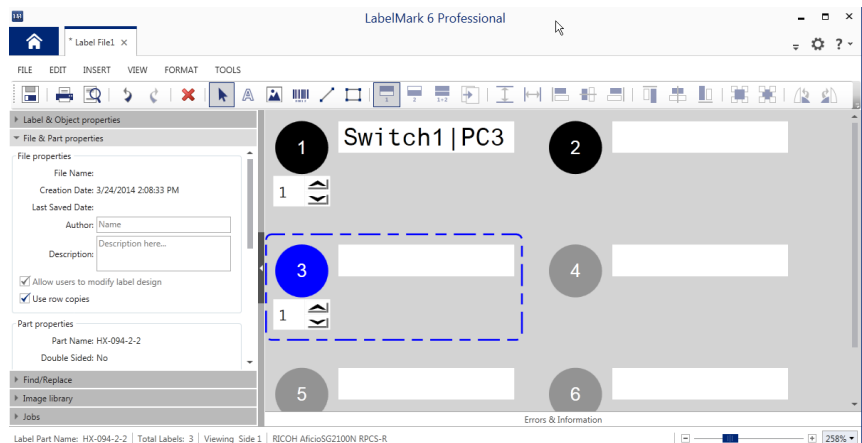
When labelling cables it is often the case that label 1 will have the 'from to' information while label 2 has the 'to from' information, depending on which side of the cable you are labelling.

Using Labelmarks 'flip-flop' function you can automatically change the location of split text.



Start by creating a label on HX-094-2-2.
On the first label type "Switch1|PC 3".

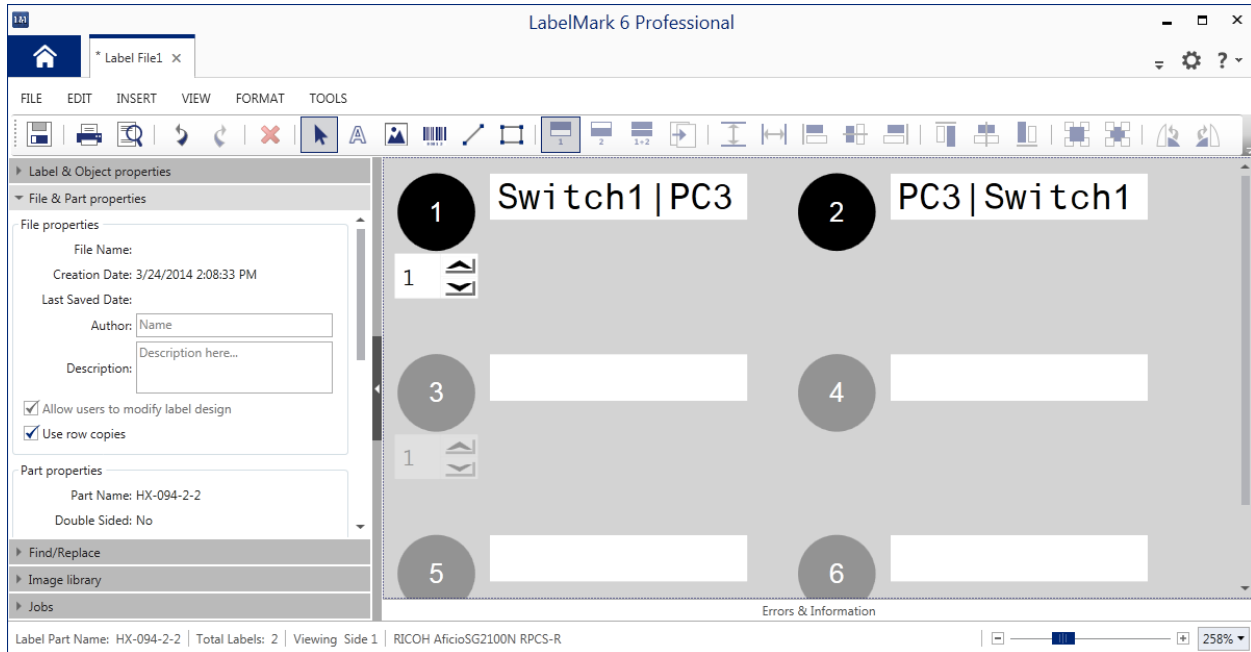
Select the first label (in the screenshot we are already on the third label).



Go to "Format" and select flip flop. You can now choose how you want "flip flop" to occur. In our case we choose left to right on a new label.



LabelMark 6 Spotlight: Using Flip Flop Functionality



The second label now has the data in reverse on it.

Of course you are not limited to a single label, but you can do this on a total range of labels.

Happy flip-flopping !

[Spotlights off]