



## Copyright Notice

Portions of the Brady Network Card are based on the following software libraries.

### **BlueZ - Bluetooth protocol stack for Linux**

Copyright (C) 2000-2001 Qualcomm Incorporated

Copyright (C) 2002-2003 Maxim Krasnyansky <maxk@qualcomm.com>

Copyright (C) 2002-2006 Marcel Holtmann marcel@holtmann.org

### **WPA Supplicant**

Copyright (c) 2003-2006, Jouni Malinen <jkmaline@cc.hut.fi> and contributors All Rights Reserved.

### **Perl Kit, Version 5**

Copyright (C) 1993, 1994, 1995, 1996, 1997, 1998, 1999, 2000, 2001, 2002, 2003, 2004, 2005, 2006 by Larry Wall and others

### **zlib/libpng**

Copyright (C) 1995-2004 Jean-loup Gailly and Mark Adler.

# Open Source Licensing Information

The Brady Network Card contains open source software. Given our obligations under these licenses, we make the following copyright notices and license terms available to you. For more information, please visit our open source licensing website at <http://www.bradyid.com/opensource>.

A. The Brady Network Card contains open source software licensed under Version 2 of the GNU General Public License.

## GNU GENERAL PUBLIC LICENSE

Version 2, June 1991

Copyright (C) 1989, 1991 Free Software Foundation, Inc., 51 Franklin Street, Fifth Floor, Boston, MA 02110-1301 USA Everyone is permitted to copy and distribute verbatim copies of this license document, but changing it is not allowed.

### Preamble

The licenses for most software are designed to take away your freedom to share and change it. By contrast, the GNU General Public License is intended to guarantee your freedom to share and change free software--to make sure the software is free for all its users. This General Public License applies to most of the Free Software Foundation's software and to any other program whose authors commit to using it. (Some other Free Software Foundation software is covered by the GNU Lesser General Public License instead.) You can apply it to your programs, too.

When we speak of free software, we are referring to freedom, not price. Our General Public Licenses are designed to make sure that you have the freedom to distribute copies of free software (and charge for this service if you wish), that you receive source code or can get it if you want it, that you can change the software or use pieces of it in new free programs; and that you know you can do these things.

To protect your rights, we need to make restrictions that forbid anyone to deny you these rights or to ask you to surrender the rights. These restrictions translate to certain responsibilities for you if you distribute copies of the software, or if you modify it.

For example, if you distribute copies of such a program, whether gratis or for a fee, you must give the recipients all the rights that you have. You must make sure that they, too, receive or can get the source code. And you must show them these terms so they know their rights.

We protect your rights with two steps: (1) copyright the software, and (2) offer you this license which gives you legal permission to copy, distribute and/or modify the software.

Also, for each author's protection and ours, we want to make certain that everyone understands that there is no warranty for this free software. If the software is modified by someone else and passed on, we want its recipients to know that what they have is not the original, so that any problems introduced by others will not reflect on the original authors' reputations.

Finally, any free program is threatened constantly by software patents. We wish to avoid the danger that redistributors of a free program will individually obtain patent licenses, in effect making the program proprietary. To prevent this, we have made it clear that any patent must be licensed for everyone's free use or not licensed at all.

The precise terms and conditions for copying, distribution and modification follow.

GNU GENERAL PUBLIC LICENSE  
TERMS AND CONDITIONS FOR COPYING, DISTRIBUTION AND MODIFICATION

0. This License applies to any program or other work which contains a notice placed by the copyright holder saying it may be distributed under the terms of this General Public License. The "Program", below, refers to any such program or work, and a "work based on the Program" means either the Program or any derivative work under copyright law:

that is to say, a work containing the Program or a portion of it, either verbatim or with modifications and/or translated into another language. (Hereinafter, translation is included without limitation in the term "modification".) Each licensee is addressed as "you".

Activities other than copying, distribution and modification are not covered by this License; they are outside its scope. The act of running the Program is not restricted, and the output from the Program is covered only if its contents constitute a work based on the Program (independent of having been made by running the Program). Whether that is true depends on what the Program does.

1. You may copy and distribute verbatim copies of the Program's source code as you receive it, in any medium, provided that you conspicuously and appropriately publish on each copy an appropriate copyright notice and disclaimer of warranty; keep intact all the notices that refer to this License and to the absence of any warranty; and give any other recipients of the Program a copy of this License along with the Program.

You may charge a fee for the physical act of transferring a copy, and you may at your option offer warranty protection in exchange for a fee.

2. You may modify your copy or copies of the Program or any portion of it, thus forming a work based on the Program, and copy and distribute such modifications or work under the terms of Section 1 above, provided that you also meet all of these conditions:

a) You must cause the modified files to carry prominent notices stating that you changed the files and the date of any change.

b) You must cause any work that you distribute or publish, that in whole or in part contains or is derived from the Program or any part thereof, to be licensed as a whole at no charge to all third parties under the terms of this License.

c) If the modified program normally reads commands interactively when run, you must cause it, when started running for such interactive use in the most ordinary way, to print or display an announcement including an appropriate copyright notice and a notice that there is no warranty (or else, saying that you provide a warranty) and that users may redistribute the program under these conditions, and telling the user how to view a copy of this License. (Exception: if the Program itself is interactive but does not normally print such an announcement, your work based on the Program is not required to print an announcement.)

These requirements apply to the modified work as a whole. If identifiable sections of that work are not derived from the Program, and can be reasonably considered independent and separate works in themselves, then this License, and its terms, do not apply to those sections when you distribute them as separate works. But when you distribute the same sections as part of a whole which is a work based on the Program, the distribution of the whole must be on the terms of this License, whose permissions for other licensees extend to the entire whole, and thus to each and every part regardless of who wrote it.

Thus, it is not the intent of this section to claim rights or contest your rights to work written entirely by you; rather, the intent is to exercise the right to control the distribution of derivative or collective works based on the Program.

In addition, mere aggregation of another work not based on the Program with the Program (or with a work based on the Program) on a volume of a storage or distribution medium does not bring the other work under the scope of this License.

3. You may copy and distribute the Program (or a work based on it, under Section 2) in object code or executable form under the terms of Sections 1 and 2 above provided that you also do one of the following:

- a) Accompany it with the complete corresponding machine-readable source code, which must be distributed under the terms of Sections 1 and 2 above on a medium customarily used for software interchange; or,
- b) Accompany it with a written offer, valid for at least three years, to give any third party, for a charge no more than your cost of physically performing source distribution, a complete machine-readable copy of the corresponding source code, to be distributed under the terms of Sections 1 and 2 above on a medium customarily used for software interchange; or,
- c) Accompany it with the information you received as to the offer to distribute corresponding source code. (This alternative is allowed only for noncommercial distribution and only if you received the program in object code or executable form with such an offer, in accord with Subsection b above.)

The source code for a work means the preferred form of the work for making modifications to it. For an executable work, complete source code means all the source code for all modules it contains, plus any associated interface definition files, plus the scripts used to control compilation and installation of the executable. However, as a special exception, the source code distributed need not include anything that is normally distributed (in either source or binary form) with the major components (compiler, kernel, and so on) of the operating system on which the executable runs, unless that component itself accompanies the executable.

If distribution of executable or object code is made by offering access to copy from a designated place, then offering equivalent access to copy the source code from the same place counts as distribution of the source code, even though third parties are not compelled to copy the source along with the object code.

4. You may not copy, modify, sublicense, or distribute the Program except as expressly provided under this License. Any attempt otherwise to copy, modify, sublicense or distribute the Program is void, and will automatically terminate your rights under this License. However, parties who have received copies, or rights, from you under this License will not have their licenses terminated so long as such parties remain in full compliance.

5. You are not required to accept this License, since you have not signed it. However, nothing else grants you permission to modify or distribute the Program or its derivative works. These actions are prohibited by law if you do not accept this License. Therefore, by modifying or distributing the Program (or any work based on the Program), you indicate your acceptance of this License to do so, and all its terms and conditions for copying, distributing or modifying the Program or works based on it.

6. Each time you redistribute the Program (or any work based on the Program), the recipient automatically receives a license from the original licensor to copy, distribute or modify the Program subject to these terms and conditions. You may not impose any further restrictions on the recipients' exercise of the rights granted herein. You are not responsible for enforcing compliance by third parties to this License.

7. If, as a consequence of a court judgment or allegation of patent infringement or for any other reason (not limited to patent issues), conditions are imposed on you (whether by court order, agreement or otherwise) that contradict the conditions of this License, they do not excuse you from the conditions of this License. If you cannot distribute so as to satisfy simultaneously your obligations under this License and any other pertinent obligations, then as a consequence you may not distribute the Program at all. For example, if a patent license would not permit royalty-free redistribution of the Program by all those who receive copies directly or indirectly through you, then the only way you could satisfy both it and this License would be to refrain entirely from distribution of the Program.

If any portion of this section is held invalid or unenforceable under any particular circumstance, the balance of the section is intended to apply and the section as a whole is intended to apply in other circumstances.

It is not the purpose of this section to induce you to infringe any patents or other property right claims or to contest validity of any such claims; this section has the sole purpose of protecting the integrity of the free software distribution system, which is implemented by public license practices. Many people have made generous contributions to the wide range of software distributed through that system in reliance on consistent application of that system; it is up to the author/donor to decide if he or she is willing to distribute software through any other system and a licensee cannot impose that choice.

This section is intended to make thoroughly clear what is believed to be a consequence of the rest of this License.

8. If the distribution and/or use of the Program is restricted in certain countries either by patents or by copyrighted interfaces, the original copyright holder who places the Program under this License may add an explicit geographical distribution limitation excluding those countries, so that distribution is permitted only in or among countries not thus excluded. In such case, this License incorporates the limitation as if written in the body of this License.

9. The Free Software Foundation may publish revised and/or new versions of the General Public License from time to time. Such new versions will be similar in spirit to the present version, but may differ in detail to address new problems or concerns.

Each version is given a distinguishing version number. If the Program specifies a version number of this License which applies to it and "any later version", you have the option of following the terms and conditions either of that version or of any later version published by the Free Software Foundation. If the Program does not specify a version number of this License, you may choose any version ever published by the Free Software Foundation.

10. If you wish to incorporate parts of the Program into other free programs whose distribution conditions are different, write to the author to ask for permission. For software which is copyrighted by the Free Software Foundation, write to the Free Software Foundation; we sometimes make exceptions for this. Our decision will be guided by the two goals of preserving the free status of all derivatives of our free software and of promoting the sharing and reuse of software generally.

## NO WARRANTY

11. BECAUSE THE PROGRAM IS LICENSED FREE OF CHARGE, THERE IS NO WARRANTY FOR THE PROGRAM, TO THE EXTENT PERMITTED BY APPLICABLE LAW. EXCEPT WHEN OTHERWISE STATED IN WRITING THE COPYRIGHT HOLDERS AND/OR OTHER PARTIES PROVIDE THE PROGRAM "AS IS" WITHOUT WARRANTY OF ANY KIND, EITHER EXPRESSED OR IMPLIED, INCLUDING, BUT NOT LIMITED TO, THE IMPLIED WARRANTIES OF MERCHANTABILITY AND FITNESS FOR A PARTICULAR PURPOSE. THE ENTIRE RISK AS TO THE QUALITY AND PERFORMANCE OF THE PROGRAM IS WITH YOU. SHOULD THE PROGRAM PROVE DEFECTIVE, YOU ASSUME THE COST OF ALL NECESSARY SERVICING, REPAIR OR CORRECTION.

12. IN NO EVENT UNLESS REQUIRED BY APPLICABLE LAW OR AGREED TO IN WRITING WILL ANY COPYRIGHT HOLDER, OR ANY OTHER PARTY WHO MAY MODIFY AND/OR REDISTRIBUTE THE PROGRAM AS PERMITTED ABOVE, BE LIABLE TO YOU FOR DAMAGES, INCLUDING ANY GENERAL, SPECIAL, INCIDENTAL OR CONSEQUENTIAL DAMAGES ARISING OUT OF THE USE OR INABILITY TO USE THE PROGRAM (INCLUDING BUT NOT LIMITED TO LOSS OF DATA OR DATA BEING RENDERED INACCURATE OR LOSSES SUSTAINED BY YOU OR THIRD PARTIES OR A FAILURE OF THE PROGRAM TO OPERATE WITH ANY OTHER PROGRAMS), EVEN IF SUCH HOLDER OR OTHER PARTY HAS BEEN ADVISED OF THE POSSIBILITY OF SUCH DAMAGES.

## END OF TERMS AND CONDITIONS

B. The Brady Network Card contains open source software licensed under Version 2.1 of the GNU Lesser General Public License.

## GNU LESSER GENERAL PUBLIC LICENSE

Version 2.1, February 1999

Copyright (C) 1991, 1999 Free Software Foundation, Inc. 51 Franklin St, Fifth Floor, Boston, MA 02110-1301 USA Everyone is permitted to copy and distribute verbatim copies of this license document, but changing it is not allowed.

[This is the first released version of the Lesser GPL. It also counts as the successor of the GNU Library Public License, version 2, hence the version number 2.1.]

### Preamble

The licenses for most software are designed to take away your freedom to share and change it. By contrast, the GNU General Public Licenses are intended to guarantee your freedom to share and change free software--to make sure the software is free for all its users.

This license, the Lesser General Public License, applies to some specially designated software packages--typically libraries--of the Free Software Foundation and other authors who decide to use it. You can use it too, but we suggest you first think carefully about whether this license or the ordinary General Public License is the better strategy to use in any particular case, based on the explanations below.

When we speak of free software, we are referring to freedom of use, not price. Our General Public Licenses are designed to make sure that you have the freedom to distribute copies of free software (and charge for this service if you wish); that you receive source code or can get it if you want it; that you can change the software and use pieces of it in new free programs; and that you are informed that you can do these things.



To protect your rights, we need to make restrictions that forbid distributors to deny you these rights or to ask you to surrender these rights. These restrictions translate to certain responsibilities for you if you distribute copies of the library or if you modify it.

For example, if you distribute copies of the library, whether gratis or for a fee, you must give the recipients all the rights that we gave you. You must make sure that they, too, receive or can get the source code. If you link other code with the library, you must provide complete object files to the recipients, so that they can relink them with the library after making changes to the library and recompiling it. And you must show them these terms so they know their rights.

We protect your rights with a two-step method: (1) we copyright the library, and (2) we offer you this license, which gives you legal permission to copy, distribute and/or modify the library.

To protect each distributor, we want to make it very clear that there is no warranty for the free library. Also, if the library is modified by someone else and passed on, the recipients should know that what they have is not the original version, so that the original author's reputation will not be affected by problems that might be introduced by others. Finally, software patents pose a constant threat to the existence of any free program. We wish to make sure that a company cannot effectively restrict the users of a free program by obtaining a restrictive license from a patent holder. Therefore, we insist that any patent license obtained for a version of the library must be consistent with the full freedom of use specified in this license.

Most GNU software, including some libraries, is covered by the ordinary GNU General Public License. This license, the GNU Lesser General Public License, applies to certain designated libraries, and is quite different from the ordinary General Public License. We use this license for certain libraries in order to permit linking those libraries into non-free programs.

When a program is linked with a library, whether statically or using a shared library, the combination of the two is legally speaking a combined work, a derivative of the original library. The ordinary General Public License therefore permits such linking only if the entire combination fits its criteria of freedom. The Lesser General Public License permits more lax criteria for linking other code with the library.

We call this license the "Lesser" General Public License because it does Less to protect the user's freedom than the ordinary General Public License. It also provides other free software developers Less of an advantage over competing non-free programs. These disadvantages are the reason we use the ordinary General Public License for many libraries. However, the Lesser license provides advantages in certain special circumstances.

For example, on rare occasions, there may be a special need to encourage the widest possible use of a certain library, so that it becomes a de-facto standard. To achieve this, non-free programs must be allowed to use the library. A more frequent case is that a free library does the same job as widely used non-free libraries. In this case, there is little to gain by limiting the free library to free software only, so we use the Lesser General Public License.

In other cases, permission to use a particular library in non-free programs enables a greater number of people to use a large body of free software. For example, permission to use the GNU C Library in non-free programs enables many more people to use the whole GNU operating system, as well as its variant, the GNU/Linux operating system.

Although the Lesser General Public License is Less protective of the users' freedom, it does ensure that the user of a program that is linked with the Library has the freedom and the wherewithal to run that program using a modified version of the Library.

The precise terms and conditions for copying, distribution and modification follow. Pay close attention to the difference between a "work based on the library" and a "work that uses the library". The former contains code derived from the library, whereas the latter must be combined with the library in order to run.

## GNU LESSER GENERAL PUBLIC LICENSE TERMS AND CONDITIONS FOR COPYING, DISTRIBUTION AND MODIFICATION

0. This License Agreement applies to any software library or other program which contains a notice placed by the copyright holder or other authorized party saying it may be distributed under the terms of this Lesser General Public License (also called "this License"). Each licensee is addressed as "you".

A "library" means a collection of software functions and/or data prepared so as to be conveniently linked with application programs (which use some of those functions and data) to form executables.

The "Library", below, refers to any such software library or work which has been distributed under these terms. A "work based on the Library" means either the Library or any derivative work under copyright law: that is to say, a work containing the Library or a portion of it, either verbatim or with modifications and/or translated straightforwardly into another language. (Hereinafter, translation is included without limitation in the term "modification".)

"Source code" for a work means the preferred form of the work for making modifications to it. For a library, complete source code means all the source code for all modules it contains, plus any associated interface definition files, plus the scripts used to control compilation and installation of the library.

Activities other than copying, distribution and modification are not covered by this License; they are outside its scope. The act of running a program using the Library is not restricted, and output from such a program is covered only if its contents constitute a work based on the Library (independent of the use of the Library in a tool for writing it). Whether that is true depends on what the Library does and what the program that uses the Library does.

1. You may copy and distribute verbatim copies of the Library's complete source code as you receive it, in any medium, provided that you conspicuously and appropriately publish on each copy an appropriate copyright notice and disclaimer of warranty; keep intact all the notices that refer to this License and to the absence of any warranty; and distribute a copy of this License along with the Library.

You may charge a fee for the physical act of transferring a copy, and you may at your option offer warranty protection in exchange for a fee.

2. You may modify your copy or copies of the Library or any portion of it, thus forming a work based on the Library, and copy and distribute such modifications or work under the terms of Section 1 above, provided that you also meet all of these conditions:

- a) The modified work must itself be a software library.
- b) You must cause the files modified to carry prominent notices stating that you changed the files and the date of any change.
- c) You must cause the whole of the work to be licensed at no charge to all third parties under the terms of this License.
- d) If a facility in the modified Library refers to a function or a table of data to be supplied by an application program that uses the facility, other than as an argument passed when the facility is invoked, then you must make a good faith effort to ensure that, in the event an application does not supply such function or table, the facility still operates, and performs whatever part of its purpose remains meaningful.

(For example, a function in a library to compute square roots has a purpose that is entirely well-defined independent of the application. Therefore, Subsection 2d requires that any application-supplied function or table used by this function must be optional: if the application does not supply it, the square root function must still compute square roots.)

These requirements apply to the modified work as a whole. If identifiable sections of that work are not derived from the Library, and can be reasonably considered independent and separate works in themselves, then this License, and its terms, do not apply to those sections when you distribute them as separate works. But when you distribute the same sections as part of a whole which is a work based on the Library, the distribution of the whole must be on the terms of this License, whose permissions for other licensees extend to the entire whole, and thus to each and every part regardless of who wrote it.

Thus, it is not the intent of this section to claim rights or contest your rights to work written entirely by you; rather, the intent is to exercise the right to control the distribution of derivative or collective works based on the Library.

In addition, mere aggregation of another work not based on the Library with the Library (or with a work based on the Library) on a volume of a storage or distribution medium does not bring the other work under the scope of this License.

3. You may opt to apply the terms of the ordinary GNU General Public License instead of this License to a given copy of the Library. To do this, you must alter all the notices that refer to this License, so that they refer to the ordinary GNU General Public License, version 2, instead of to this License. (If a newer version than version 2 of the ordinary GNU General Public License has appeared, then you can specify that version instead if you wish.) Do not make any other change in these notices.

Once this change is made in a given copy, it is irreversible for that copy, so the ordinary GNU General Public License applies to all subsequent copies and derivative works made from that copy.

This option is useful when you wish to copy part of the code of the Library into a program that is not a library.

4. You may copy and distribute the Library (or a portion or derivative of it, under Section 2) in object code or executable form under the terms of Sections 1 and 2 above provided that you accompany it with the complete corresponding machine-readable source code, which must be distributed under the terms of Sections 1 and 2 above on a medium customarily used for software interchange.

If distribution of object code is made by offering access to copy from a designated place, then offering equivalent access to copy the source code from the same place satisfies the requirement to distribute the source code, even though third parties are not compelled to copy the source along with the object code.

5. A program that contains no derivative of any portion of the Library, but is designed to work with the Library by being compiled or linked with it, is called a "work that uses the Library". Such a work, in isolation, is not a derivative work of the Library, and therefore falls outside the scope of this License.

However, linking a "work that uses the Library" with the Library creates an executable that is a derivative of the Library (because it contains portions of the Library), rather than a "work that uses the library". The executable is therefore covered by this License. Section 6 states terms for distribution of such executables.

When a "work that uses the Library" uses material from a header file that is part of the Library, the object code for the work may be a derivative work of the Library even though the source code is not. Whether this is true is especially significant if the work can be linked without the Library, or if the work is itself a library. The threshold for this to be true is not precisely defined by law.

If such an object file uses only numerical parameters, data structure layouts and accessors, and small macros and small inline functions (ten lines or less in length), then the use of the object file is unrestricted, regardless of whether it is legally a derivative work. (Executables containing this object code plus portions of the Library will still fall under Section 6.)

Otherwise, if the work is a derivative of the Library, you may distribute the object code for the work under the terms of Section 6. Any executables containing that work also fall under Section 6, whether or not they are linked directly with the Library itself.

6. As an exception to the Sections above, you may also combine or link a "work that uses the Library" with the Library to produce a work containing portions of the Library, and distribute that work under terms of your choice, provided that the terms permit modification of the work for the customer's own use and reverse engineering for debugging such modifications.

You must give prominent notice with each copy of the work that the Library is used in it and that the Library and its use are covered by this License. You must supply a copy of this License. If the work during execution displays copyright notices, you must include the copyright notice for the Library among them, as well as a reference directing the user to the copy of this License. Also, you must do one of these things:

- a) Accompany the work with the complete corresponding machine-readable source code for the Library including whatever changes were used in the work (which must be distributed under Sections 1 and 2 above); and, if the work is an executable linked with the Library, with the complete machine-readable "work that uses the Library", as object code and/or source code, so that the user can modify the Library and then relink to produce a modified executable containing the modified Library. (It is understood that the user who changes the contents of definitions files in the Library will not necessarily be able to recompile the application to use the modified definitions.)
- b) Use a suitable shared library mechanism for linking with the Library. A suitable mechanism is one that (1) uses at run time a copy of the library already present on the user's computer system, rather than copying library functions into the executable, and (2) will operate properly with a modified version of the library, if the user installs one, as long as the modified version is interface-compatible with the version that the work was made with.
- c) Accompany the work with a written offer, valid for at least three years, to give the same user the materials specified in Subsection 6a, above, for a charge no more than the cost of performing this distribution.
- d) If distribution of the work is made by offering access to copy from a designated place, offer equivalent access to copy the above specified materials from the same place.
- e) Verify that the user has already received a copy of these materials or that you have already sent this user a copy.

For an executable, the required form of the "work that uses the Library" must include any data and utility programs needed for reproducing the executable from it. However, as a special exception, the materials to be distributed need not include anything that is normally distributed (in either source or binary form) with the major components (compiler, kernel, and so on) of the operating system on which the executable runs, unless that component itself accompanies the executable.

It may happen that this requirement contradicts the license restrictions of other proprietary libraries that do not normally accompany the operating system. Such a contradiction means you cannot use both them and the Library together in an executable that you distribute.

7. You may place library facilities that are a work based on the Library side-by-side in a single library together with other library facilities not covered by this License, and distribute such a combined library, provided that the separate distribution of the work based on the Library and of the other library facilities is otherwise permitted, and provided that you do these two things:

- a) Accompany the combined library with a copy of the same work based on the Library, uncombined with any other library facilities. This must be distributed under the terms of the Sections above.
- b) Give prominent notice with the combined library of the fact that part of it is a work based on the Library, and explaining where to find the accompanying uncombined form of the same work.

8. You may not copy, modify, sublicense, link with, or distribute the Library except as expressly provided under this License. Any attempt otherwise to copy, modify, sublicense, link with, or distribute the Library is void, and will automatically terminate your rights under this License. However, parties who have received copies, or rights, from you under this License will not have their licenses terminated so long as such parties remain in full compliance.

9. You are not required to accept this License, since you have not signed it. However, nothing else grants you permission to modify or distribute the Library or its derivative works. These actions are prohibited by law if you do not accept this License. Therefore, by modifying or distributing the Library (or any work based on the Library), you indicate your acceptance of this License to do so, and all its terms and conditions for copying, distributing or modifying the Library or works based on it.

10. Each time you redistribute the Library (or any work based on the Library), the recipient automatically receives a license from the original licensor to copy, distribute, link with or modify the Library subject to these terms and conditions. You may not impose any further restrictions on the recipients' exercise of the rights granted herein. You are not responsible for enforcing compliance by third parties with this License.

11. If, as a consequence of a court judgment or allegation of patent infringement or for any other reason (not limited to patent issues), conditions are imposed on you (whether by court order, agreement or otherwise) that contradict the conditions of this License, they do not excuse you from the conditions of this License. If you cannot distribute so as to satisfy simultaneously your obligations under this License and any other pertinent obligations, then as a consequence you may not distribute the Library at all. For example, if a patent license would not permit royalty-free redistribution of the Library by all those who receive copies directly or indirectly through you, then the only way you could satisfy both it and this License would be to refrain entirely from distribution of the Library.

If any portion of this section is held invalid or unenforceable under any particular circumstance, the balance of the section is intended to apply, and the section as a whole is intended to apply in other circumstances.

It is not the purpose of this section to induce you to infringe any patents or other property right claims or to contest validity of any such claims; this section has the sole purpose of protecting the integrity of the free software distribution system which is implemented by public license practices. Many people have made generous contributions to the wide range of software distributed through that system in reliance on consistent application of that system; it is up to the author/donor to decide if he or she is willing to distribute software through any other system and a licensee cannot impose that choice.

This section is intended to make thoroughly clear what is believed to be a consequence of the rest of this License.

12. If the distribution and/or use of the Library is restricted in certain countries either by patents or by copyrighted interfaces, the original copyright holder who places the Library under this License may add an explicit geographical distribution limitation excluding those countries, so that distribution is permitted only in or among countries not thus excluded. In such case, this License incorporates the limitation as if written in the body of this License.

13. The Free Software Foundation may publish revised and/or new versions of the Lesser General Public License from time to time. Such new versions will be similar in spirit to the present version, but may differ in detail to address new problems or concerns.

Each version is given a distinguishing version number. If the Library specifies a version number of this License which applies to it and "any later version", you have the option of following the terms and conditions either of that version or of any later version published by the Free Software Foundation. If the Library does not specify a license version number, you may choose any version ever published by the Free Software Foundation.

14. If you wish to incorporate parts of the Library into other free programs whose distribution conditions are incompatible with these, write to the author to ask for permission. For software which is copyrighted by the Free Software Foundation, write to the Free Software Foundation; we sometimes make exceptions for this. Our decision will be guided by the two goals of preserving the free status of all derivatives of our free software and of promoting the sharing and reuse of software generally.

#### NO WARRANTY

15. BECAUSE THE LIBRARY IS LICENSED FREE OF CHARGE, THERE IS NO WARRANTY FOR THE LIBRARY, TO THE EXTENT PERMITTED BY APPLICABLE LAW. EXCEPT WHEN OTHERWISE STATED IN WRITING THE COPYRIGHT HOLDERS AND/OR OTHER PARTIES PROVIDE THE LIBRARY "AS IS" WITHOUT WARRANTY OF ANY KIND, EITHER EXPRESSED OR IMPLIED, INCLUDING, BUT NOT LIMITED TO, THE IMPLIED WARRANTIES OF MERCHANTABILITY AND FITNESS FOR A PARTICULAR PURPOSE. THE ENTIRE RISK AS TO THE QUALITY AND PERFORMANCE OF THE LIBRARY IS WITH YOU. SHOULD THE LIBRARY PROVE DEFECTIVE, YOU ASSUME THE COST OF ALL NECESSARY SERVICING, REPAIR OR CORRECTION.

16. IN NO EVENT UNLESS REQUIRED BY APPLICABLE LAW OR AGREED TO IN WRITING WILL ANY COPYRIGHT HOLDER, OR ANY OTHER PARTY WHO MAY MODIFY AND/OR REDISTRIBUTE THE LIBRARY AS PERMITTED ABOVE, BE LIABLE TO YOU FOR DAMAGES, INCLUDING ANY GENERAL, SPECIAL, INCIDENTAL OR CONSEQUENTIAL DAMAGES ARISING OUT OF THE USE OR INABILITY TO USE THE LIBRARY (INCLUDING BUT NOT LIMITED TO LOSS OF DATA OR DATA BEING RENDERED INACCURATE OR LOSSES SUSTAINED BY YOU OR THIRD PARTIES OR A FAILURE OF THE LIBRARY TO OPERATE WITH ANY OTHER SOFTWARE), EVEN IF SUCH HOLDER OR OTHER PARTY HAS BEEN ADVISED OF THE POSSIBILITY OF SUCH DAMAGES.

C. The Brady Network Card contains open source software licensed under the OpenSSL License.

Copyright (c) 1998-2007 The OpenSSL Project. All rights reserved.

Redistribution and use in source and binary forms, with or without modification, are permitted provided that the following conditions are met:



1. Redistributions of source code must retain the above copyright notice, this list of conditions and the following disclaimer. 2. Redistributions in binary form must reproduce the above copyright notice, this list of conditions and the following disclaimer in the documentation and/or other materials provided with the distribution. 3. All advertising materials mentioning features or use of this software must display the following acknowledgment: "This product includes software developed by the OpenSSL Project for use in the OpenSSL Toolkit. (<http://www.openssl.org/>)" 4. The names "OpenSSL Toolkit" and "OpenSSL Project" must not be used to endorse or promote products derived from this software without prior written permission. For written permission, please contact [openssl-core@openssl.org](mailto:openssl-core@openssl.org). 5. Products derived from this software may not be called "OpenSSL" nor may "OpenSSL" appear in their names without prior written permission of the OpenSSL Project. 6. Redistributions of any form whatsoever must retain the following acknowledgment: "This product includes software developed by the OpenSSL Project for use in the OpenSSL Toolkit (<http://www.openssl.org/>)"

THIS SOFTWARE IS PROVIDED BY THE OpenSSL PROJECT ``AS IS" AND ANY EXPRESSED OR IMPLIED WARRANTIES, INCLUDING, BUT NOT LIMITED TO, THE IMPLIED WARRANTIES OF MERCHANTABILITY AND FITNESS FOR A PARTICULAR PURPOSE ARE DISCLAIMED. IN NO EVENT SHALL THE OpenSSL PROJECT OR ITS CONTRIBUTORS BE LIABLE FOR ANY DIRECT, INDIRECT, INCIDENTAL, SPECIAL, EXEMPLARY, OR CONSEQUENTIAL DAMAGES (INCLUDING, BUT NOT LIMITED TO, PROCUREMENT OF SUBSTITUTE GOODS OR SERVICES; LOSS OF USE, DATA, OR PROFITS; OR BUSINESS INTERRUPTION HOWEVER CAUSED AND ON ANY THEORY OF LIABILITY, WHETHER IN CONTRACT, STRICT LIABILITY, OR TORT (INCLUDING NEGLIGENCE OR OTHERWISE) ARISING IN ANY WAY OUT OF THE USE OF THIS SOFTWARE, EVEN IF ADVISED OF THE POSSIBILITY OF SUCH DAMAGE.

D. This product includes cryptographic software written by Eric Young ([ey@cryptsoft.com](mailto:ey@cryptsoft.com)). This product includes software written by Tim Hudson ([tjh@cryptsoft.com](mailto:tjh@cryptsoft.com)).

Copyright (C) 1995-1998 Eric Young ([ey@cryptsoft.com](mailto:ey@cryptsoft.com))

All rights reserved. This package is an SSL implementation written by Eric Young ([ey@cryptsoft.com](mailto:ey@cryptsoft.com)).

The implementation was written so as to conform with Netscapes SSL. This library is free for commercial and non-commercial use as long as the following conditions are adhered to. The following conditions apply to all code found in this distribution, be it the RC4, RSA, lhash, DES, etc., code; not just the SSL code. The SSL documentation included with this distribution is covered by the same copyright terms except that the holder is Tim Hudson ([tjh@cryptsoft.com](mailto:tjh@cryptsoft.com)). Copyright remains Eric Young's, and as such any Copyright notices in the code are not to be removed. If this package is used in a product, Eric Young should be given attribution as the author of the parts of the library used. This can be in the form of a textual message at program startup or in documentation (online or textual) provided with the package.

Redistribution and use in source and binary forms, with or without modification, are permitted provided that the following conditions are met:

1. Redistributions of source code must retain the copyright notice, this list of conditions and the following disclaimer.  
2. Redistributions in binary form must reproduce the above copyright notice, this list of conditions and the following disclaimer in the documentation and/or other materials provided with the distribution.  
3. All advertising materials mentioning features or use of this software must display the following acknowledgement:

"This product includes cryptographic software written by Eric Young ([ey@cryptsoft.com](mailto:ey@cryptsoft.com))" The word 'cryptographic' can be left out if the routines from the library being used are not cryptographic related :-). 4. If you include any Windows specific code (or a derivative thereof) from the apps directory (application code) you must include an acknowledgement: "This product includes software written by Tim Hudson ([tjh@cryptsoft.com](mailto:tjh@cryptsoft.com))"

THIS SOFTWARE IS PROVIDED BY ERIC YOUNG ``AS IS" AND ANY EXPRESS OR IMPLIED WARRANTIES, INCLUDING, BUT NOT LIMITED TO, THE IMPLIED WARRANTIES OF MERCHANTABILITY AND FITNESS FOR A PARTICULAR PURPOSE ARE DISCLAIMED. IN NO EVENT SHALL THE AUTHOR OR CONTRIBUTORS BE LIABLE FOR ANY DIRECT, INDIRECT, INCIDENTAL, SPECIAL, EXEMPLARY, OR CONSEQUENTIAL DAMAGES (INCLUDING, BUT NOT LIMITED TO, PROCUREMENT OF SUBSTITUTE GOODS OR SERVICES; LOSS OF USE, DATA, OR PROFITS; OR BUSINESS INTERRUPTION) HOWEVER CAUSED AND ON ANY THEORY OF LIABILITY, WHETHER IN CONTRACT, STRICT LIABILITY, OR TORT (INCLUDING NEGLIGENCE OR OTHERWISE) ARISING IN ANY WAY OUT OF THE USE OF THIS SOFTWARE, EVEN IF ADVISED OF THE POSSIBILITY OF SUCH DAMAGE.

The license and distribution terms for any publically available version or derivative of this code cannot be changed. i.e. this code cannot simply be copied and put under another distribution license [including the GNU Public License.]

E. The Brady Network Card contains open source software licensed under the dropbear license.

Dropbear contains a number of components from different sources, hence there are a few licenses and authors involved. All licenses are fairly non-restrictive. The majority of code is written by Matt Johnston, under the license below. Portions of the client-mode work are (c) 2004 Mihnea Stoenescu, under the same license:

Copyright (c) 2002-2008 Matt Johnston. Portions copyright (c) 2004 Mihnea Stoenescu. All rights reserved.

Permission is hereby granted, free of charge, to any person obtaining a copy of this software and associated documentation files (the "Software"), to deal in the Software without restriction, including without limitation the rights to use, copy, modify, merge, publish, distribute, sublicense, and/or sell copies of the Software, and to permit persons to whom the Software is furnished to do so, subject to the following conditions:

The above copyright notice and this permission notice shall be included in all copies or substantial portions of the Software.

THE SOFTWARE IS PROVIDED "AS IS", WITHOUT WARRANTY OF ANY KIND, EXPRESS OR IMPLIED, INCLUDING BUT NOT LIMITED TO THE WARRANTIES OF MERCHANTABILITY, FITNESS FOR A PARTICULAR PURPOSE AND NONINFRINGEMENT. IN NO EVENT SHALL THE AUTHORS OR COPYRIGHT HOLDERS BE LIABLE FOR ANY CLAIM, DAMAGES OR OTHER LIABILITY, WHETHER IN AN ACTION OF CONTRACT, TORT OR OTHERWISE, ARISING FROM, OUT OF OR IN CONNECTION WITH THE SOFTWARE OR THE USE OR OTHER DEALINGS IN THE SOFTWARE.

LibTomCrypt and LibTomMath are written by Tom St Denis, and are Public Domain.

PuTTY is copyright 1997-2003 Simon Tatham.

Portions copyright Robert de Bath, Joris van Rantwijk, Delian Delchev, Andreas Schultz, Jeroen Massar, Wez Furlong, Nicolas Barry, Justin Bradford, and CORE SDI S.A.

Permission is hereby granted, free of charge, to any person obtaining a copy of this software and associated documentation files (the "Software"), to deal in the Software without restriction, including without limitation the rights to use, copy, modify, merge, publish, distribute, sublicense, and/or sell copies of the Software, and to permit persons to whom the Software is furnished to do so, subject to the following conditions:



The above copyright notice and this permission notice shall be included in all copies or substantial portions of the Software.

THE SOFTWARE IS PROVIDED "AS IS", WITHOUT WARRANTY OF ANY KIND, EXPRESS OR IMPLIED, INCLUDING BUT NOT LIMITED TO THE WARRANTIES OF MERCHANTABILITY, FITNESS FOR A PARTICULAR PURPOSE AND NONINFRINGEMENT. IN NO EVENT SHALL THE COPYRIGHT HOLDERS BE LIABLE FOR ANY CLAIM, DAMAGES OR OTHER LIABILITY, WHETHER IN AN ACTION OF CONTRACT, TORT OR OTHERWISE, ARISING FROM, OUT OF OR IN CONNECTION WITH THE SOFTWARE OR THE USE OR OTHER DEALINGS IN THE SOFTWARE.

F. The Brady Network Card contains open source software licensed under the Apache License Version 2.0.

The majority of the source code in the mDNSResponder project is licensed under the terms of the Apache License, Version 2.0, available from: <<http://www.apache.org/licenses/LICENSE-2.0>>

Apache License

Version 2.0, January 2004

<http://www.apache.org/licenses/>

## TERMS AND CONDITIONS FOR USE, REPRODUCTION, AND DISTRIBUTION

### 1. Definitions.

"License" shall mean the terms and conditions for use, reproduction, and distribution as defined by Sections 1 through 9 of this document.

"Licensor" shall mean the copyright owner or entity authorized by the copyright owner that is granting the License.

"Legal Entity" shall mean the union of the acting entity and all other entities that control, are controlled by, or are under common control with that entity. For the purposes of this definition, "control" means (i) the power, direct or indirect, to cause the direction or management of such entity, whether by contract or otherwise, or (ii) ownership of fifty percent (50%) or more of the outstanding shares, or (iii) beneficial ownership of such entity.

"You" (or "Your") shall mean an individual or Legal Entity exercising permissions granted by this License.

"Source" form shall mean the preferred form for making modifications, including but not limited to software source code, documentation source, and configuration files.

"Object" form shall mean any form resulting from mechanical transformation or translation of a Source form, including but not limited to compiled object code, generated documentation, and conversions to other media types.

"Work" shall mean the work of authorship, whether in Source or Object form, made available under the License, as indicated by a copyright notice that is included in or attached to the work (an example is provided in the Appendix below).

"Derivative Works" shall mean any work, whether in Source or Object form, that is based on (or derived from) the Work and for which the editorial revisions, annotations, elaborations, or other modifications represent, as a whole, an original work of authorship. For the purposes of this License, Derivative Works shall not include works that remain separable from, or merely link (or bind by name) to the interfaces of, the Work and Derivative Works thereof.

"Contribution" shall mean any work of authorship, including the original version of the Work and any modifications or additions to that Work or Derivative Works thereof, that is intentionally submitted to Licensor for inclusion in the Work by the copyright owner or by an individual or Legal Entity authorized to submit on behalf of the copyright owner. For the purposes of this definition, "submitted" means any form of electronic, verbal, or written communication sent to the Licensor or its representatives, including but not limited to communication on electronic mailing lists, source code control systems, and issue tracking systems that are managed by, or on behalf of, the Licensor for the purpose of discussing and improving the Work, but excluding communication that is conspicuously marked or otherwise designated in writing by the copyright owner as "Not a Contribution."

"Contributor" shall mean Licensor and any individual or Legal Entity on behalf of whom a Contribution has been received by Licensor and subsequently incorporated within the Work.

2. Grant of Copyright License. Subject to the terms and conditions of this License, each Contributor hereby grants to You a perpetual, worldwide, non-exclusive, no-charge, royalty-free, irrevocable copyright license to reproduce, prepare Derivative Works of, publicly display, publicly perform, sublicense, and distribute the Work and such Derivative Works in Source or Object form.

3. Grant of Patent License. Subject to the terms and conditions of this License, each Contributor hereby grants to You a perpetual, worldwide, non-exclusive, no-charge, royalty-free, irrevocable (except as stated in this section) patent license to make, have made, use, offer to sell, sell, import, and otherwise transfer the Work, where such license applies only to those patent claims licensable by such Contributor that are necessarily infringed by their Contribution(s) alone or by combination of their Contribution(s) with the Work to which such Contribution(s) was submitted. If You institute patent litigation against any entity (including a cross-claim or counterclaim in a lawsuit) alleging that the Work or a Contribution incorporated within the Work constitutes direct or contributory patent infringement, then any patent licenses granted to You under this License for that Work shall terminate as of the date such litigation is filed.

4. Redistribution. You may reproduce and distribute copies of the Work or Derivative Works thereof in any medium, with or without modifications, and in Source or Object form, provided that You meet the following conditions:

You must give any other recipients of the Work or Derivative Works a copy of this License; and

You must cause any modified files to carry prominent notices stating that You changed the files; and

You must retain, in the Source form of any Derivative Works that You distribute, all copyright, patent, trademark, and attribution notices from the Source form of the Work, excluding those notices that do not pertain to any part of the Derivative Works; and

If the Work includes a "NOTICE" text file as part of its distribution, then any Derivative Works that You distribute must include a readable copy of the attribution notices contained within such NOTICE file, excluding those notices that do not pertain to any part of the Derivative Works, in at least one of the following places: within a NOTICE text file distributed as part of the Derivative Works; within the Source form or documentation, if provided along with the Derivative Works; or, within a display generated by the Derivative Works, if and wherever such third-party notices normally appear. The contents of the NOTICE file are for informational purposes only and do not modify the License. You may add Your own attribution notices within Derivative Works that You distribute, alongside or as an addendum to the NOTICE text from the Work, provided that such additional attribution notices cannot be construed as modifying the License. You may add Your own copyright statement to Your modifications and may provide additional or different license terms and conditions for use, reproduction, or distribution of Your modifications, or for any such Derivative Works as a whole, provided Your use, reproduction, and distribution of the Work otherwise complies with the conditions stated in this License.

5. Submission of Contributions. Unless You explicitly state otherwise, any Contribution intentionally submitted for inclusion in the Work by You to the Licensor shall be under the terms and conditions of this License, without any additional terms or conditions. Notwithstanding the above, nothing herein shall supersede or modify the terms of any separate license agreement you may have executed with Licensor regarding such Contributions.

6. Trademarks. This License does not grant permission to use the trade names, trademarks, service marks, or product names of the Licensor, except as required for reasonable and customary use in describing the origin of the Work and reproducing the content of the NOTICE file.

7. Disclaimer of Warranty. Unless required by applicable law or agreed to in writing, Licensor provides the Work (and each Contributor provides its Contributions) on an "AS IS" BASIS, WITHOUT WARRANTIES OR CONDITIONS OF ANY KIND, either express or implied, including, without limitation, any warranties or conditions of TITLE, NON-INFRINGEMENT, MERCHANTABILITY, or FITNESS FOR A PARTICULAR PURPOSE. You are solely responsible for determining the appropriateness of using or redistributing the Work and assume any risks associated with Your exercise of permissions under this License.

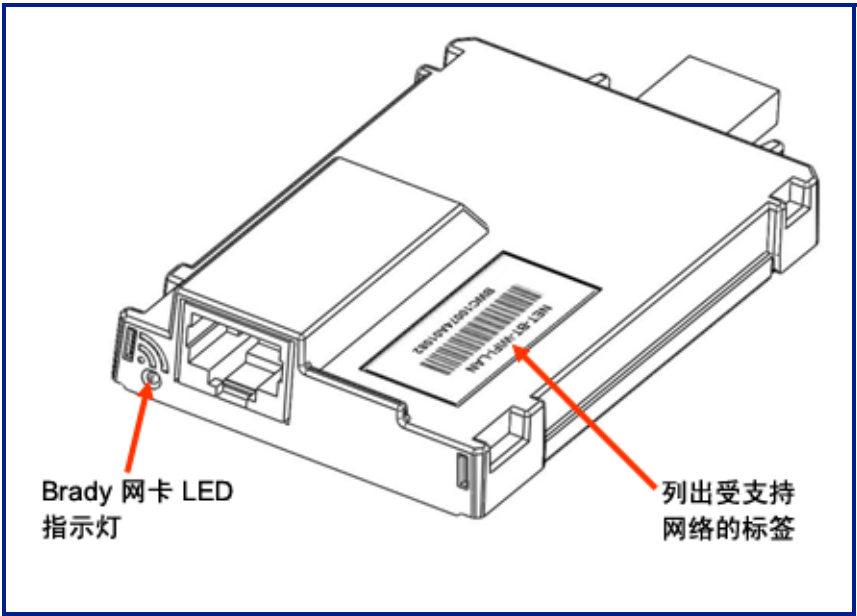
8. Limitation of Liability. In no event and under no legal theory, whether in tort (including negligence), contract, or otherwise, unless required by applicable law (such as deliberate and grossly negligent acts) or agreed to in writing, shall any Contributor be liable to You for damages, including any direct, indirect, special, incidental, or consequential damages of any character arising as a result of this License or out of the use or inability to use the Work (including but not limited to damages for loss of goodwill, work stoppage, computer failure or malfunction, or any and all other commercial damages or losses), even if such Contributor has been advised of the possibility of such damages.

9. Accepting Warranty or Additional Liability. While redistributing the Work or Derivative Works thereof, You may choose to offer, and charge a fee for, acceptance of support, warranty, indemnity, or other liability obligations and/or rights consistent with this License. However, in accepting such obligations, You may act only on Your own behalf and on Your sole responsibility, not on behalf of any other Contributor, and only if You agree to indemnify, defend, and hold each Contributor harmless for any liability incurred by, or claims asserted against, such Contributor by reason of your accepting any such warranty or additional liability.

To accommodate license compatibility with the widest possible range of client code licenses, the shared library code, which is linked at runtime into the same address space as the client using it, is licensed under the terms of the "Three-Clause BSD License". The Linux Name Service Switch code, contributed by National ICT Australia Ltd (NICTA) is licensed under the terms of the NICTA Public Software Licence (which is substantially similar to the "Three-Clause BSD License", with some additional language pertaining to Australian law).



# Brady 网卡



## Brady 网卡 LED 指示灯

Brady 网卡上的 LED 指示灯的颜色变化分别表示以下状态：

颜色	状态
绿色常亮	网卡运行正常，状态正常。
橙色闪烁	固件已损坏，需要对固件进行升级。使用 Brady 网卡配置实用工具升级固件。（有关下载新固件的信息，请参阅第 79 页。）
绿色闪烁	正在进行固件升级。
红色常亮	网卡出现故障。Brady 网卡无法与打印机进行通信。请与您的系统管理员联系。
红色闪烁	检测到 Brady 网卡当前工作发生错误。请检查当前工作。

## 支持的 网络

网卡条形码标签上的名称指出了该特定网卡支持的 网络类型。

名称	支持的 网络
NET-BT-WIFI-LAN	蓝牙、 WiFi 和以太网
NET-WIFI	仅 WiFi 和 蓝牙
NET-BT	仅 蓝牙
NET-LAN	仅以太网

## Brady 网卡安装

如果您的 Brady 打印机配备了 Brady 网卡（WiFi 或 Ethernet），您可以将打印机配置为本地打印机（通过 USB 电缆物理连接到 PC）以及配置为通过以太网或 WiFi 连接的网络（共享）打印机。要将打印机建立为网络打印机，您必须配置 Brady 网卡以便识别您的网络并与之配合工作。随打印机提供的 Brady 打印机驱动程序光盘中包含了安装向导，不仅可用于打印机驱动程序，而且可用于 Brady 网卡配置。打印机驱动程序和 Brady 网卡驱动程序也可从 Brady 网站上下载，网址为：[www.bradyid.com](http://www.bradyid.com)。

网卡安装和配置向导会给出六种不同的安装方案。分别为：

- 首次针对 WiFi 打印进行安装
- 首次针对以太网打印进行安装
- 通过手机进行蓝牙打印
- 为其他 PC 进行安装
- 仅安装 USB 驱动程序
- 首次针对特殊打印进行安装

## 首次针对 WiFi 打印进行安装

使用此安装过程：

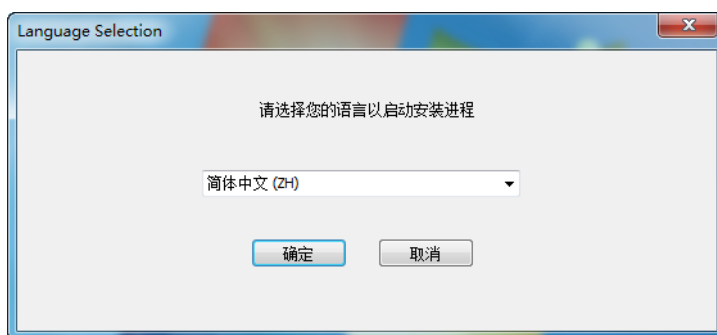
- ☒ 是否您刚刚购买了打印机并正在进行首次安装。
- ☒ 是否打算使用 WiFi 网络将 PC 上的打印作业发送给打印机。

要针对 WiFi 配置 Brady 网卡并为 Brady 打印机安装打印机驱动程序，请执行下列步骤：

1. 确保打印机和 PC 未通过 USB 电缆连接。
2. 将 Brady 打印机驱动程序光盘插入计算机的 CD 驱动器。

安装向导会自动启动。

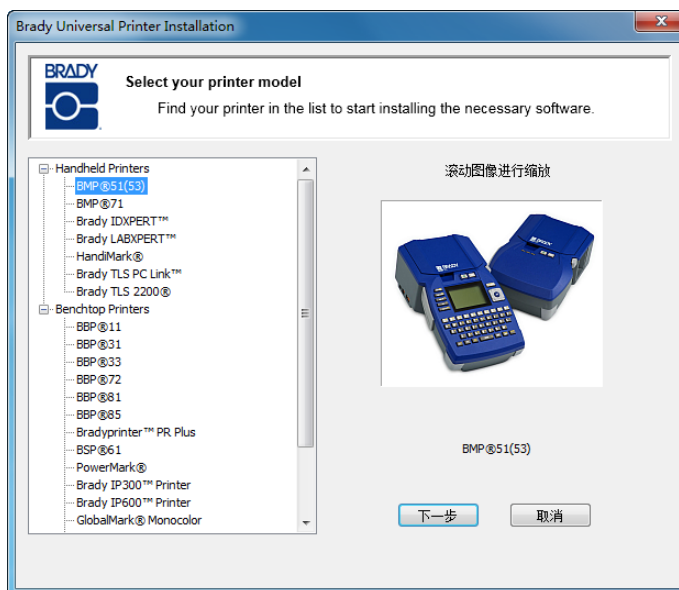
3. 打开打印机。
4. 从下拉列表中，选择您熟悉的语言，然后单击“确定”。





- 单击要安装的打印机型号，然后单击“下一步”。

Windows Installer 会安装 Brady 网卡配置实用工具。



- 如果打印机和 PC 仍通过 USB 电缆相连，请立即断开连接。

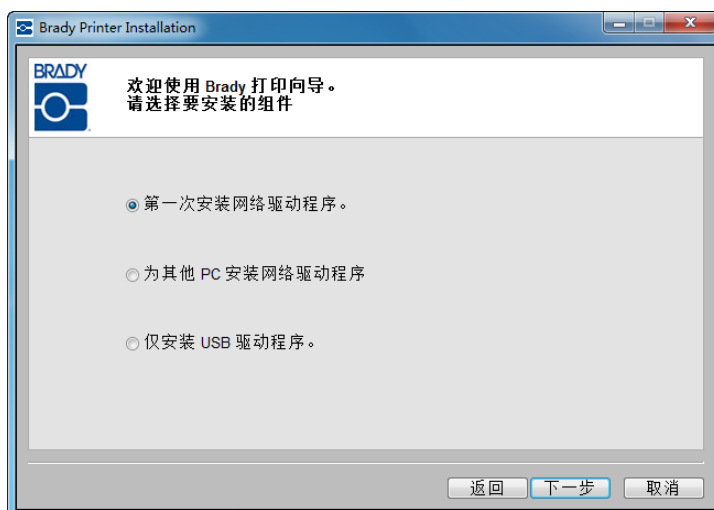


- 在弹出的“安装设备软件”窗口中，单击“安装”以安装打印机驱动程序。

## 6 | Brady 网卡安装

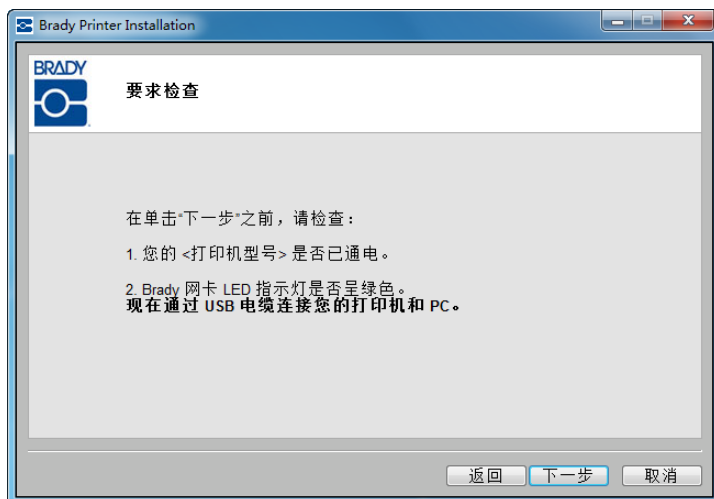
首次针对 WiFi 打印进行安装

8. 单击“第一次安装网络驱动程序”（默认情况下为选中状态），然后单击“下一步”。



检查打印机是否已通电开启并且 Brady 网卡 LED 指示灯为绿色常亮。

9. 通过 USB 电缆连接您的打印机和 PC。



如果您正在 Windows XP 上安装打印机驱动程序，则将会显示“Found New Hardware Wizard”（查找新硬件向导）。如果显示该向导，请继续执行步骤 11，否则请跳至第 8 页上的步骤 14。

10. 单击“是，这一次和每次连接设备时”单选按钮，然后单击“下一步”。



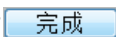
11. 单击“自动安装软件（建议）”单选按钮，然后单击“下一步”。



## 8 | Brady 网卡安装

首次针对 WiFi 打印进行安装

安装会继续进行。

12. 完成时，请单击“完成”  以关闭向导。

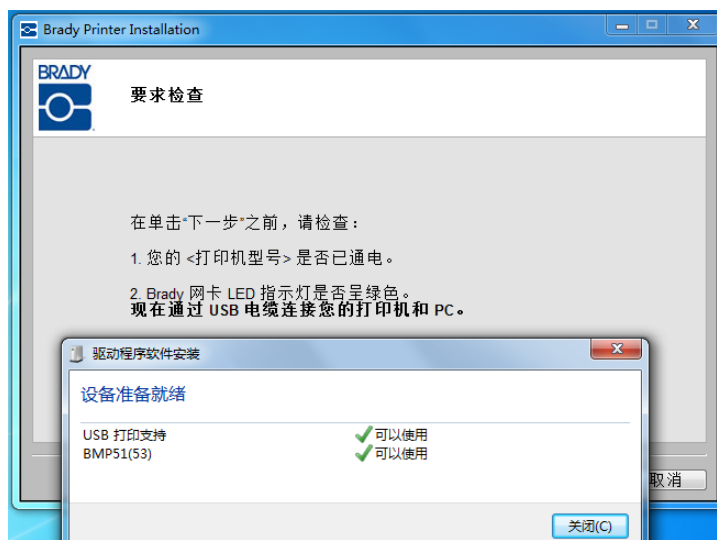
13. 单击“下一步”。



14. 显示的消息表明您的设备已可用。单击“关闭”可移除该消息。

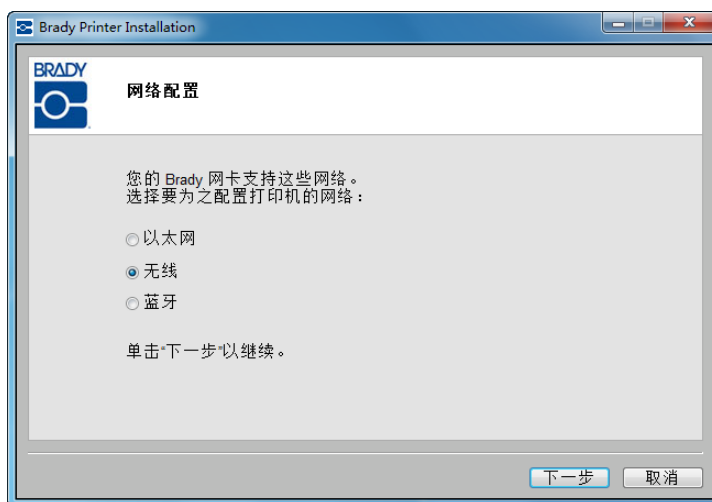
15. 在“要求检查”窗口中，单击“下一步”。

连接已安装并得到确认



Brady 网卡支持的网络会显示出来。激活 WiFi:

16. 单击“无线”，然后单击“下一步”。



17. 在“打印机描述”字段中，为此网络连接输入易于识别的名称 / 描述。您可以使用任何字母数字字符。

对于“网络地址类型”字段，建议使用默认的 DHCP 协议。如果使用 DHCP，请转至第 10 页上的步骤 22。



## 使用静态网络地址类型

如果您希望使用“静态”网络地址类型，则必须填写“IP 地址”、“子网掩码”和“默认网关”字段。您可以从网络管理员那里获得这些信息。使用静态：

18. 单击“静态”单选按钮。这会打开需要输入地址的字段。
19. 单击“IP 地址”字段，然后输入所需 IP 地址。光标会自动跳至“IP 地址”字段的各个分区。
20. 单击“子网掩码”字段，然后输入子网掩码。
21. 单击“默认网关”字段，然后输入网关地址。
22. 输入完毕后，单击“下一步”。



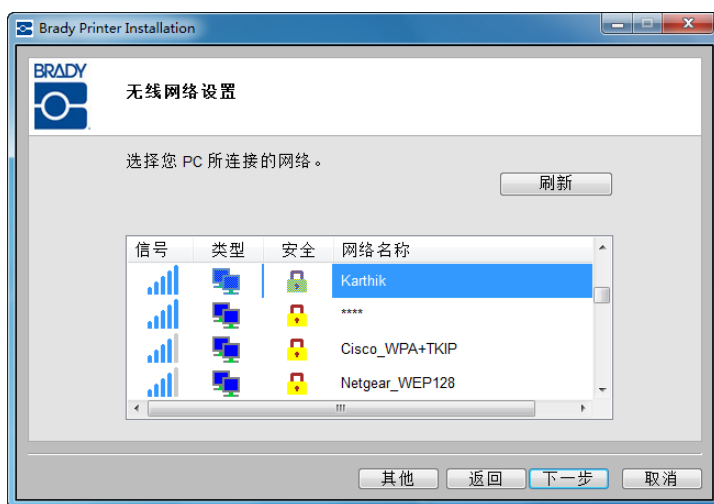
23. 选择您 PC 当前所连接的网络。

**注：**如果您未在列表中看到您的网络，请单击“刷新”

刷新 按钮。

如果您仍未在列表中看到您的网络，您可以选择“其他”，手动指定网络。

要指定其他网络，请转至第 14 页上的步骤 30。



请确保您具有 PC 的 WiFi 网络名称和网络密钥（如果网络受到密码保护）。获得这些信息后：

24. 单击“下一步”。

Brady 网卡可针对“个人”网络连接和“企业”网络连接进行配置。

个人网络也称为 WPA PSK，通常供家庭和小型办公室使用。此种网络受用户指定的密钥保护。

企业网络也称为 WPA-802.1X（或仅称为 WPA），供大型企业使用且需要 RADIUS 服务器。该服务器可生成密钥。

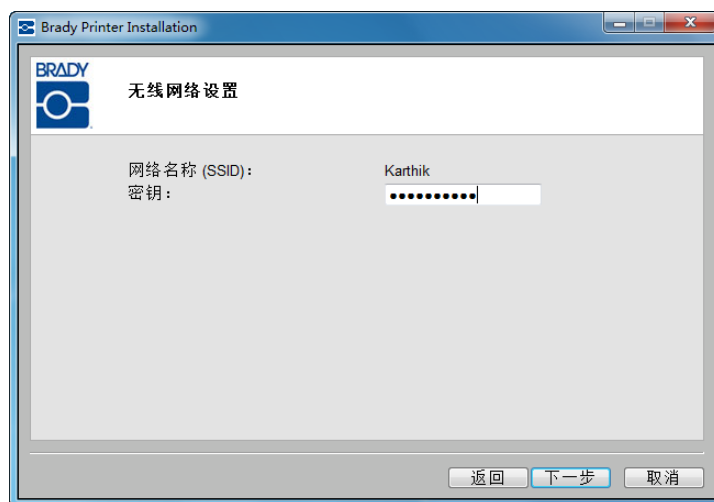
**注：**安装程序会自动检测您选择的网络是“个人”网络还是“企业”网络。

如果从列表中选择无线网络是“个人”网络：

**25.** 请为所选网络输入密钥。

如果您不知道密码或安全类型，请与网络管理员联系。

**26.** 单击“下一步”。



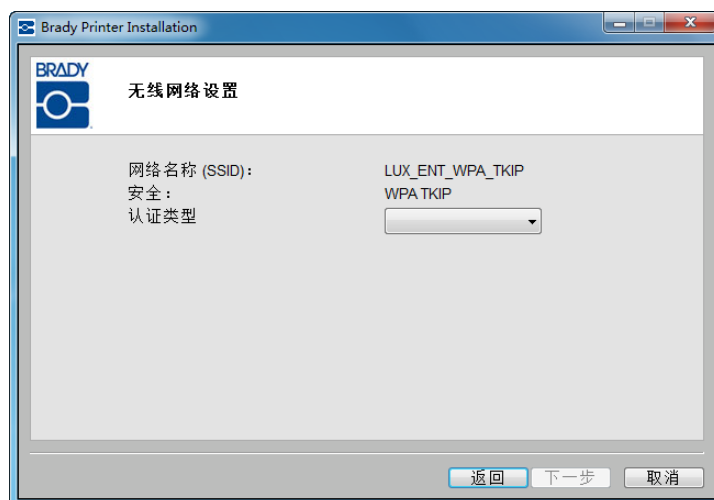
连接已确认。

如果您在步骤 18 中使用了“静态”，则网络打印机已建立好并使用您在步骤 19 中输入的 IP 地址。打印机已安装完毕。转至第 20 页上的步骤 48。否则，请转至从第 17 页开始的 Bonjour 打印服务。



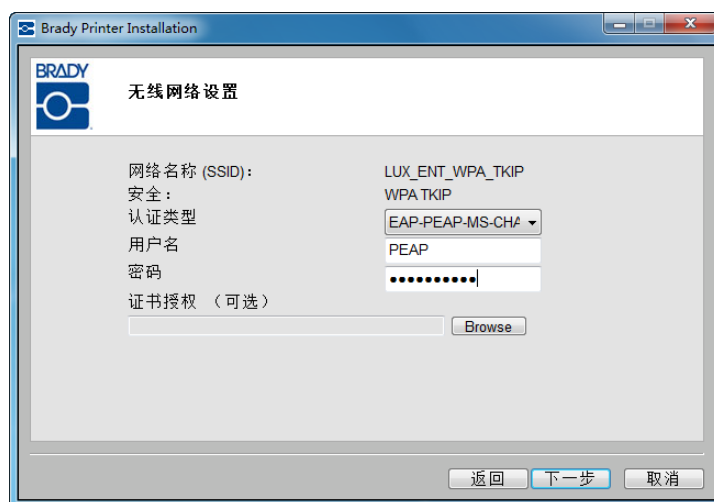
如果从列表中选择无线网络是“企业”网络：

27. 单击下拉箭头，选择“认证类型”。（如果您不知道“认证类型”，请与网络管理员核实一下。）



28. 如果适用，请输入用户名和密码。请与网络管理员核实一下，以确定是否已为您分配了用户名。

**注：**依据所选的“认证类型”，可能需要也可能不需要用户名、密码和证书。有关详细信息，请参阅第 14 页上的认证表。

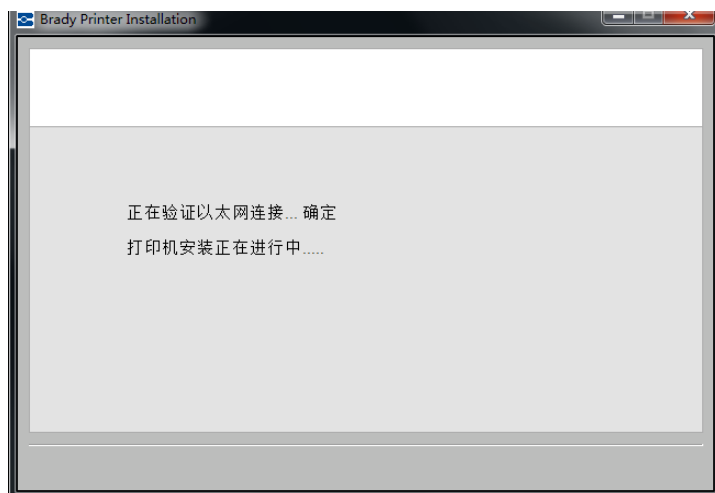


29. 准备就绪后，单击“下一步”。



无线网络连接已确认。

如果您在步骤 18 中使用了“静态”或者您的 PC 和打印机不在同一子网中，则网络打印机已建立好并使用您输入的 IP 地址或 DHCP IP 地址。打印机已安装。转至第 20 页上的步骤 48。



否则，请转至从第 17 页开始的 Bonjour 打印服务。

## 认证方法和类型

Brady 网卡安装程序支持多种认证方法和类型。下两个表列出了 WPA 和 WPA2 企业网络所支持的 802.1X 认证方法，针对所使用认证类型的必填字段或所需字段。选择认证类型时，请参阅这两个表。

Authentication Methods Supported	EAP-TLS	EAP-TTLS	PEAP v0
Certificate Formats Supported	PKCS1	PKCS12	
	.DER .PEM .CER .CRT .KEY	.PFX	

表 1. 认证方法

Authentication Type	Username	Password/ Private key Password	CA Certificate	Client Certificate	Client Key
EAP-PEAP-MSCHAPV2	Mandatory	Mandatory	Optional	Not Required	Not Required
EAP-TTLS-MSCHAPV2	Mandatory	Mandatory	Optional	Not Required	Not Required
EAP-TLS	Mandatory	Not Required	Optional	Mandatory	Mandatory
EAP-TLS	Mandatory	Required if Client Cert is in .PFX format	Optional	Mandatory	Not Required

表 2. 认证类型

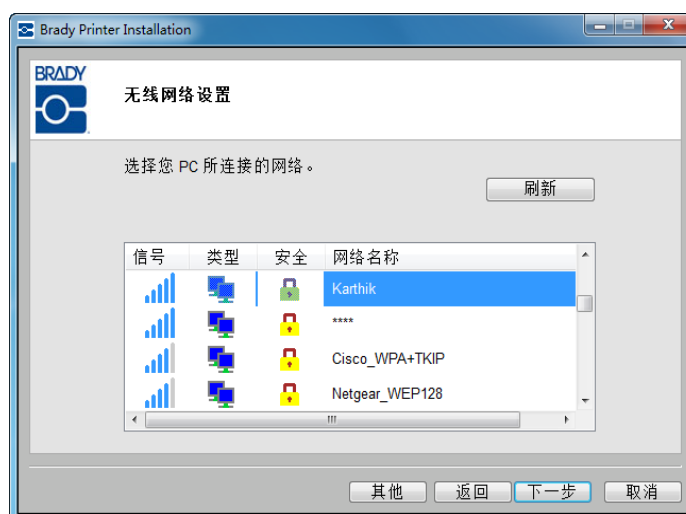
## 定义其他网络

定义其他网络时，您必须清楚网络名称 (SSID)、安全是否应用以及密钥（如果适用）。您可以从网络管理员那里获得这些信息。

命名其他网络：

- 在“无线网络设置”屏幕中，单击“其他”

**其他** 按钮。



31. 在“其他”网络屏幕中，单击“个人网络”或“企业网络”单选按钮以最好地描述此网络。



### 个人网络

32. 如果单击“个人网络”，请输入网络名称 (SSID)。
33. 在“安全”字段中，单击下拉箭头并选择安全类型。

根据所选的“安全”，您可能需要或不需提供密钥。有关详细信息，请参阅第 14 页上的认证方法表和认证类型表。

**注：**您不必为个人网络提供认证类型。



## 企业网络

如果单击“企业网络”：

34. 输入网络名称 (SSID)

35. 在“安全”字段中，单击下拉箭头并选择安全类型。

**注：**如果您在列表中找到了您的网络，则“网络名称”和“安全”字段会自动填入。



36. 单击下拉箭头，选择“认证类型”。（如果您不知道“认证类型”，请与网络管理员核实一下。）

37. 如果适用，请输入用户名和密码。请与网络管理员核实一下，以确定是否已为您分配了用户名。

**注：**依据所选的“认证类型”，可能需要也可能不需要用户名、密码和证书。有关详细信息，请参阅第 14 页上的认证表。



38. 准备就绪后，单击“下一步”。

无线网络连接已确认。

如果您在步骤 18 中使用了“静态”或者您的 PC 和打印机不在同一子网中，则网络打印机已建立好并使用您输入的 IP 地址或 DHCP IP 地址。打印机已安装。转至第 20 页上的步骤 48。



### Bonjour 打印服务

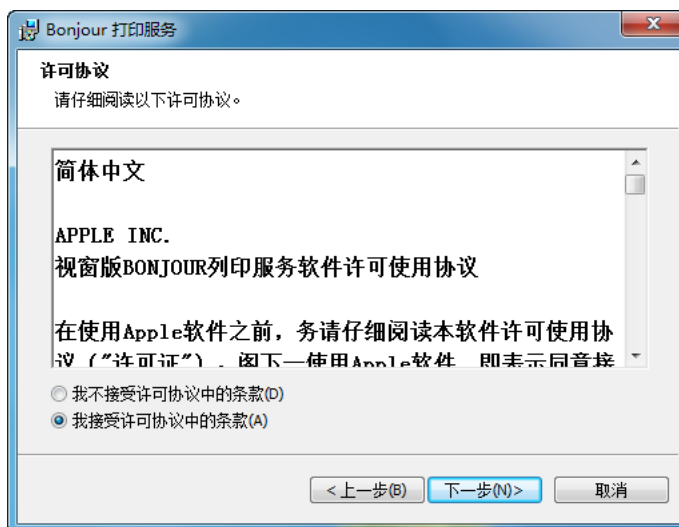
如果您使用了默认 DHCP 设置并且 PC 和打印机位于同一子网中，则连接会成功并且 Bonjour 向导会启动。Bonjour 程序旨在建立和监视网络打印机。Bonjour 打印机向导会将 Brady 打印机建立为网络打印机。

39. 单击“下一步”



Apple 最终用户许可协议将会显示。

40. 在阅读后，请单击“我接受许可协议中的条款”，然后单击“下一步”以继续。
41. 在阅读信息屏幕中再次单击“下一步”。



确定希望应用于 Bonjour 向导的选项以及希望 Bonjour 打印服务软件存储的位置。

42. 如果您希望更改默认存储位置，请单击“更改”并按照正常的 Windows 步骤定位其他目录。
43. 准备就绪后，单击“安装”。



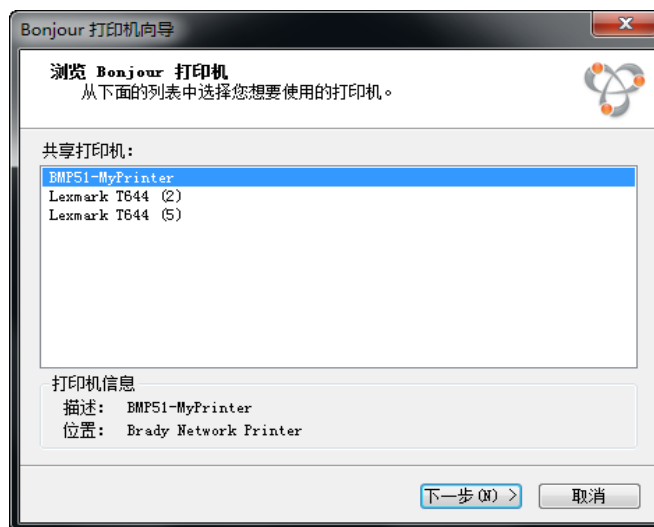
44. 在 Bonjour 打印服务安装完后，单击“完成”。



45. 单击分配的网络打印机名称。

为了更容易识别，您在步骤 17 中分配的名称和描述会显示在屏幕左下角。

46. 单击“下一步”。



47. 在 Bonjour 打印机向导完成后，单击“完成”。



Brady 打印机安装完成。

48. 单击“完成”以退出向导。





## 首次针对以太网打印进行安装

使用此安装过程：

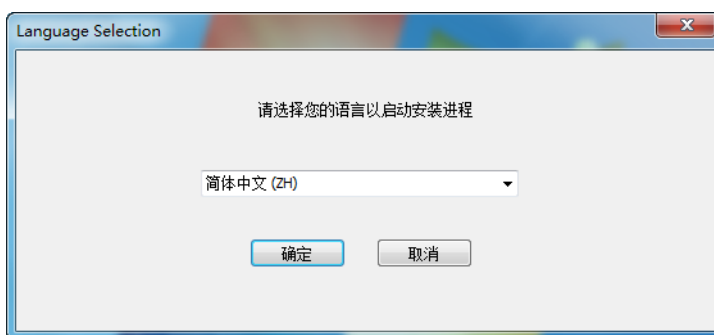
- ☒ 是否您刚刚购买了打印机并正在进行首次安装。
- ☒ 是否打算使用以太网或局域网网络将 PC 上的打印作业发送给打印机。

Brady 网卡已配置为支持以太网或 WiFi 连接。您无法同时使两种连接处于活动状态。激活以太网连接：

1. 确保打印机和 PC 未通过 USB 电缆连接。
2. 将 Brady 打印机驱动程序光盘插入计算机的 CD 驱动器。

安装向导会自动启动。

3. 打开打印机。
4. 从下拉列表中，选择您熟悉的语言，然后单击“确定”。

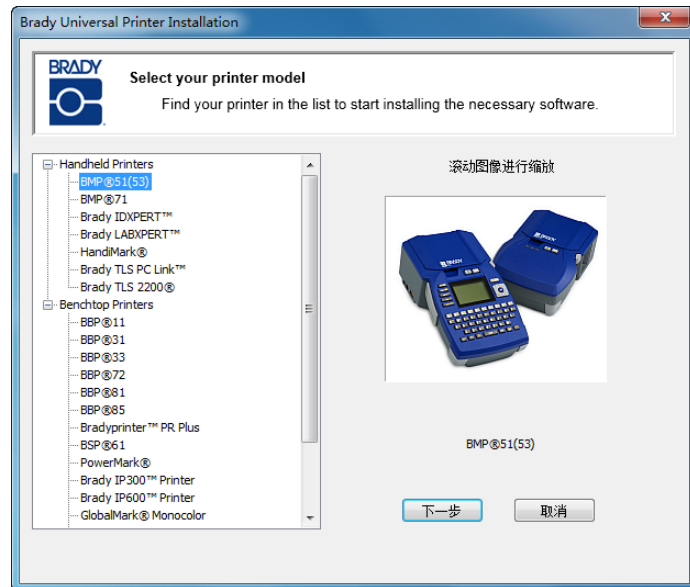


## 22 | Brady 网卡安装

首次针对以太网打印进行安装

5. 单击要安装的打印机型号，然后单击“下一步”。

Windows Installer 会安装 Brady 网卡配置实用工具。

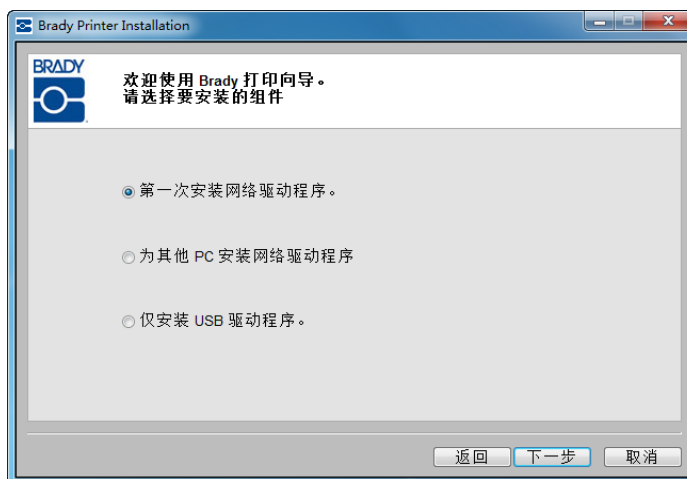


6. 如果打印机和 PC 仍通过 USB 电缆相连，请立即断开连接。

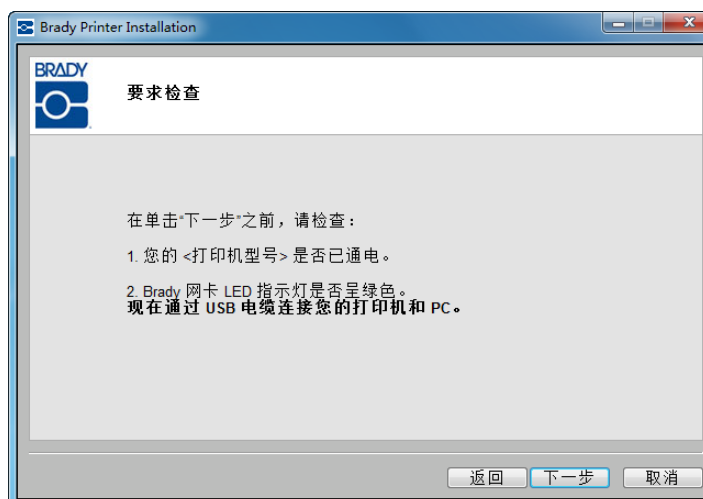
7. 单击“下一步”。



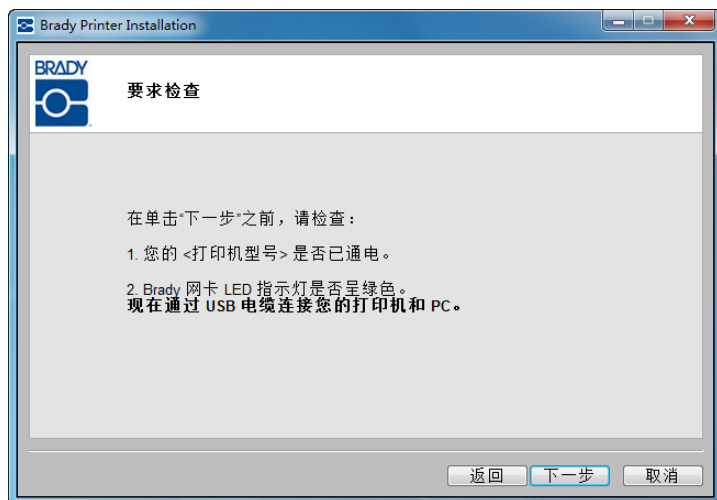
8. 单击“第一次安装网络驱动程序”（默认情况下为选中状态），然后单击“下一步”。



9. 检查打印机是否已通电开启并且 Brady 网卡 LED 指示灯为绿色常亮。



10. 通过 USB 电缆连接您的打印机和 PC，然后单击“下一步”。



如果您正在 Windows XP 上安装打印机驱动程序，则将会显示“Found New Hardware Wizard”（查找新硬件向导）。如果显示该向导，请继续执行步骤 11，否则请跳至第 26 页上的步骤 15。


11. 单击“是，这一次和每次连接设备时”单选按钮，然后单击“下一步”。



12. 单击“自动安装软件（建议）”单选按钮，然后单击“下一步”。



安装会继续进行。

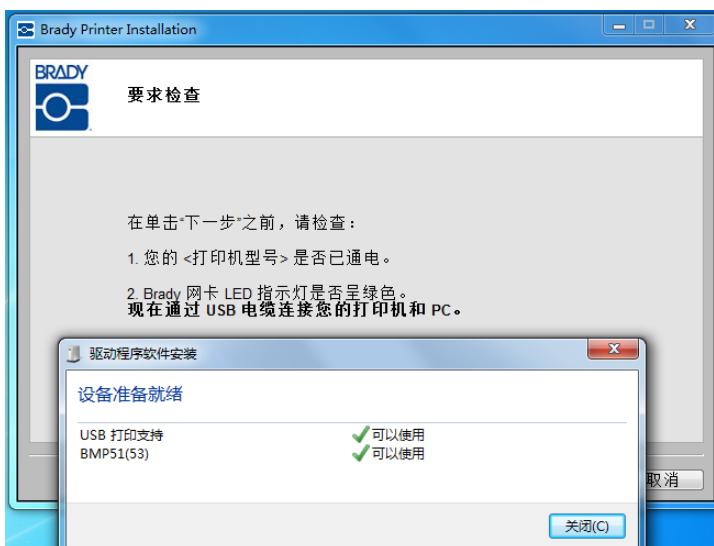
13. 完成时，请单击“完成”  以关闭向导。

14. 单击“下一步”。



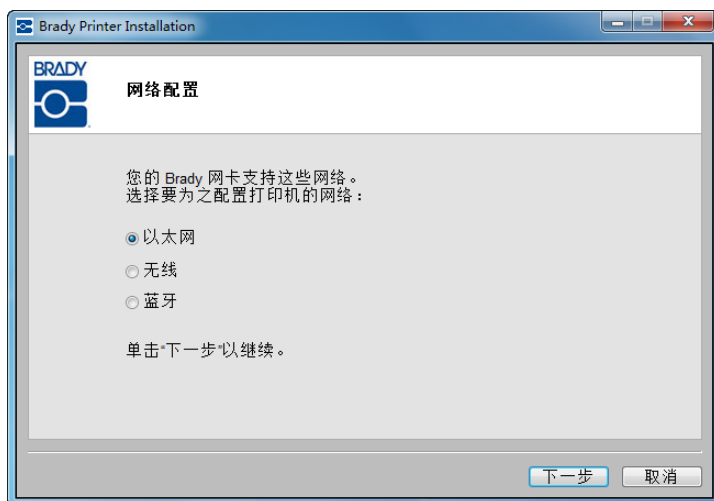
15. 显示的消息表明您的设备已可用。单击“关闭”可移除该消息。

连接已安装并得到确认。



Brady 网卡支持的网络会显示出来。激活以太网：

16. 单击“以太网”单选按钮，然后单击“下一步”。



17. 在“打印机描述”字段中，为此网络连接输入易于识别的名称 / 描述。您可以使用任何字母数字字符。

对于“网络地址类型”字段，建议使用默认的 DHCP 协议。如果使用 DHCP，请转至第 27 页上的步骤 22。



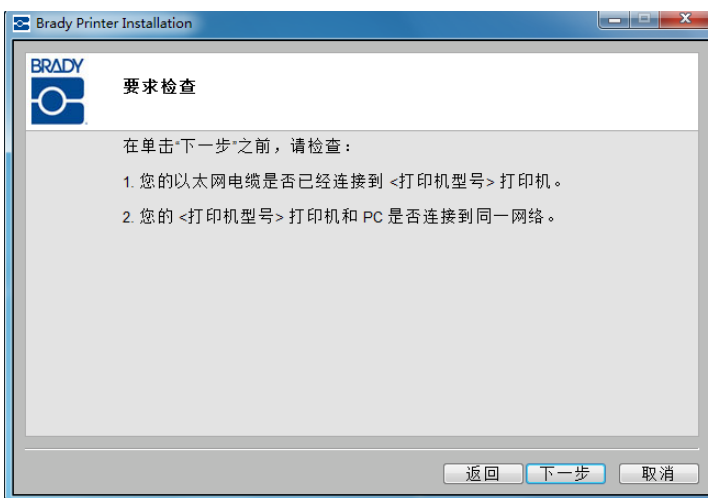
### 使用静态网络地址类型

如果您希望使用“静态”，则必须填写“IP 地址”、“子网掩码”和“默认网关”字段。您可以从网络管理员那里获得这些信息。使用静态：

18. 单击“静态”单选按钮。这会打开需要输入地址的字段。
19. 单击“IP 地址”字段，然后输入所需 IP 地址。光标会跳至“IP 地址”字段的各个分区。
20. 单击“子网掩码”字段，然后输入子网掩码。
21. 单击“默认网关”字段，然后输入网关地址。
22. 输入完毕后，单击“下一步”。



请确保以太网电缆连接到打印机并且打印机和 PC 连接到同一网络。



要确认打印机和 PC 位于同一网络，请参阅下方的连接指南。

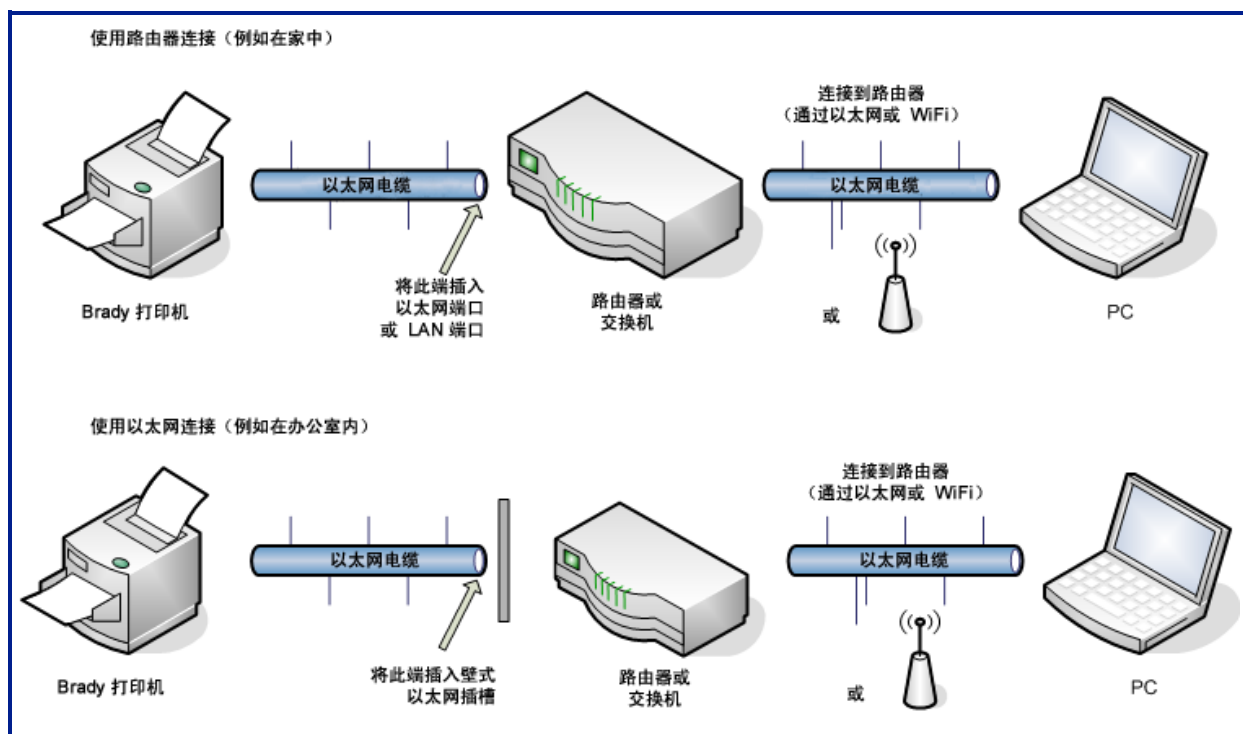


图 1 • 网络连接

23. 单击“下一步”。



以太网连接已确认。

如果您在步骤 18 中使用了“静态”，则网络打印机已建立好并使用您在步骤 19 中输入的 IP 地址。请转至 [第 32 页](#)上的步骤 33。



否则，请转至以下 Bonjour 打印服务程序。

### Bonjour 打印服务

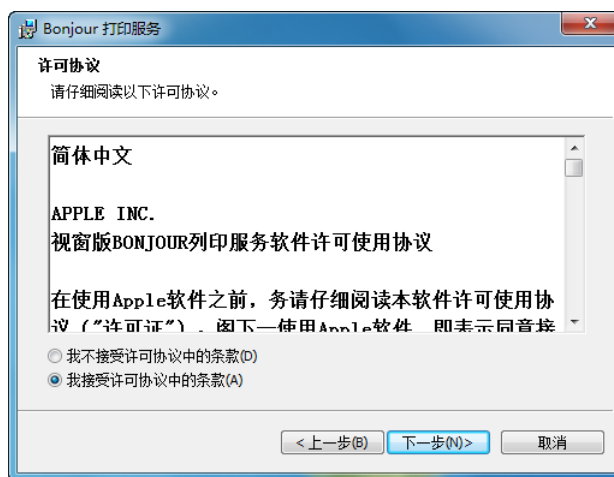
如果您使用了默认 DHCP 设置并且 PC 和打印机位于同一网络中，则以太网连接会成功并且 Bonjour 向导会启动。Bonjour 程序旨在建立和监视网络打印机。Bonjour 打印机向导会将 Brady 打印机建立为网络打印机。

**24.** 单击“下一步”



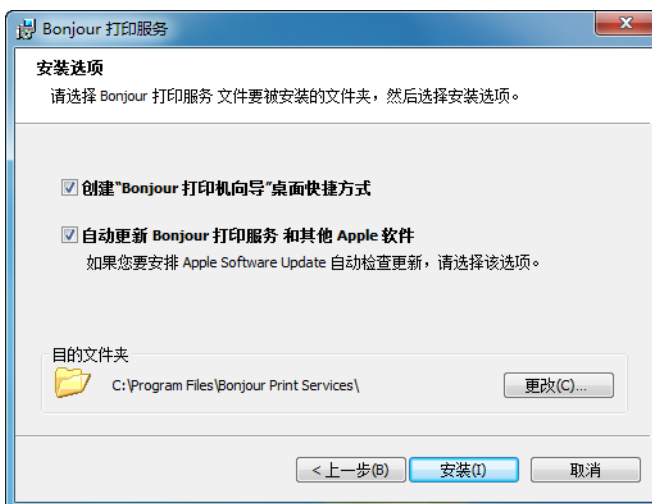
Apple 最终用户许可协议将会显示。

25. 在阅读后，请单击“我接受许可协议中的条款”，然后单击“下一步”以继续。
26. 在阅读信息屏幕中再次单击“下一步”。



确定希望应用于 Bonjour 向导的选项以及希望 Bonjour 打印服务软件存储的位置。

27. 如果您希望更改默认存储位置，请单击“更改”并按照正常的 Windows 步骤定位其他目录。
28. 准备就绪后，单击“安装”。



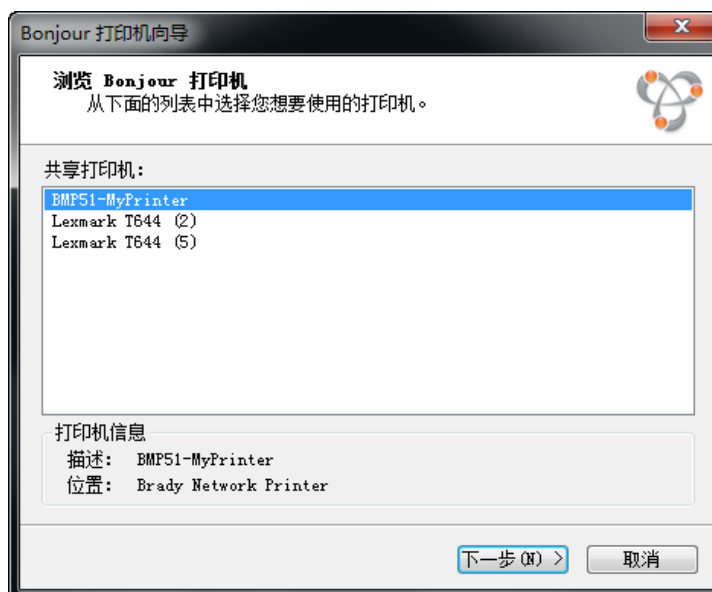
29. 在 Bonjour 打印服务安装完后，单击“完成”。



30. 单击分配的网络打印机名称。

为了更容易识别，您在步骤 17 中分配的名称和描述会显示在屏幕左下角。

31. 单击“下一步”。



32. 在 Bonjour 打印机向导完成后，单击“完成”。



Brady 打印机安装完成。

33. 单击“完成”以退出向导。



## 通过手机进行蓝牙打印

如果您的手机上已安装 **Brady Mobile** 应用程序，则该应用程序可直接通过蓝牙将打印作业发送给打印机。您不需要执行任何软件安装。您的打印机需要加电开启，**Brady 网卡 LED** 应为绿色。

### 默认 PIN

如果 Brady Mobile 应用程序请求正在与之建立通信的 Brady 打印机的 PIN（个人标识号），则最初会使用默认的 PIN: 0000。

您可以通过 Brady 网卡配置实用工具来更改 PIN。有关安装配置实用工具的步骤，请参阅 [第 41 页](#)（仅安装 USB 驱动程序）。有关更改 PIN 的信息，请参阅 [第 77 页](#)。

### 默认名称

您还可通过该网卡配置实用工具来更改打印机设备名称。有关安装配置实用工具的步骤，请参阅 [第 41 页](#)（仅安装 USB 驱动程序）。有关更改打印机名称的详细信息，请参阅 [第 77 页](#)。

## 为其他 PC 进行安装

如果打印机之前已配置，但现在希望使用其他 PC 将打印作业发送给打印机，请使用此安装过程。

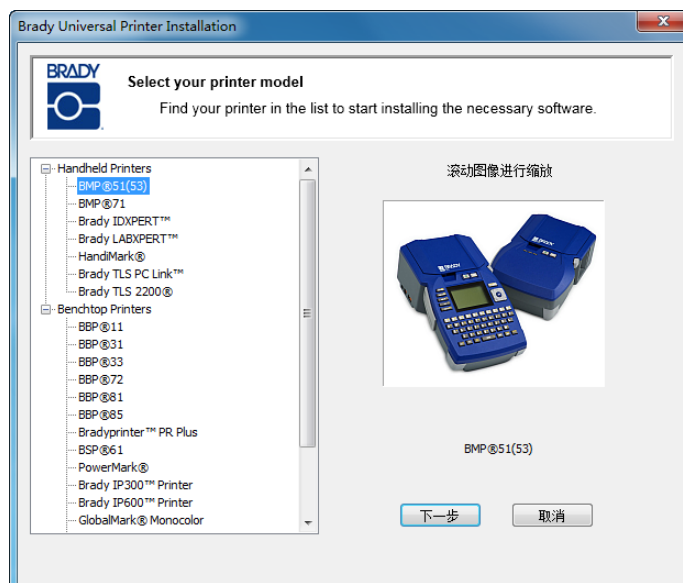
**注：**其他 PC 必须与打印机位于同一网络中。如果不在同一网络中，在安装过程中将无法检测到它。

在已针对以太网或 WiFi 配置 Brady 网卡后，您可以在其他 PC 上安装这些网络驱动程序。

1. 将 Brady 通用打印机驱动程序光盘插入计算机的 CD 驱动器。

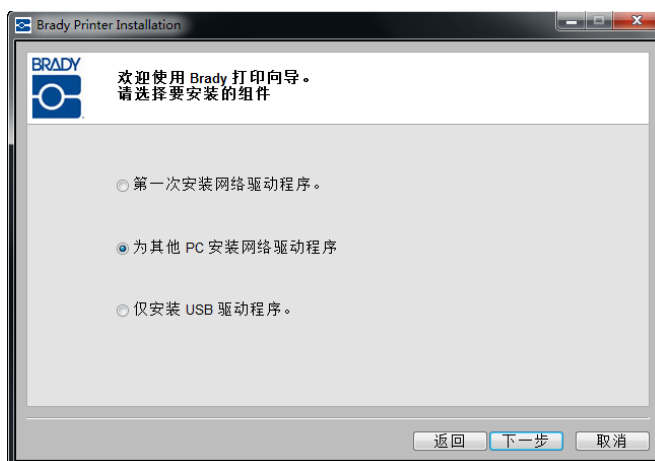
安装向导会自动启动。

2. 单击要安装的打印机型号。
3. 单击“下一步”。

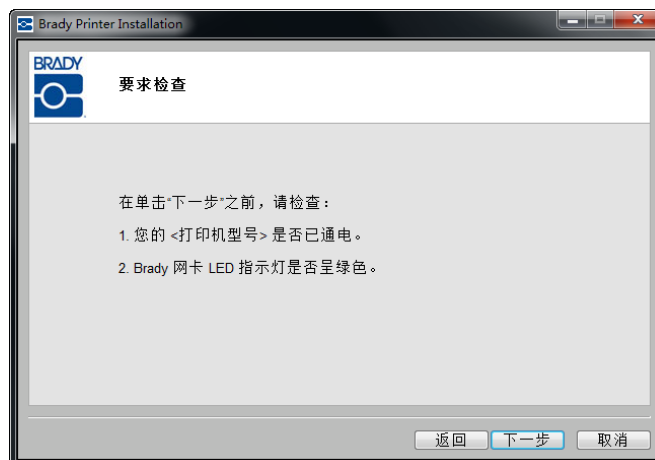


4. 单击“为其他 PC 安装网络驱动程序”。

5. 单击“下一步”。



6. 在确认打印机已加电开启并且 Brady 网卡工作正常（以绿灯表明）后，单击“下一步”。



## Bonjour 打印服务

Bonjour 向导将会启动。

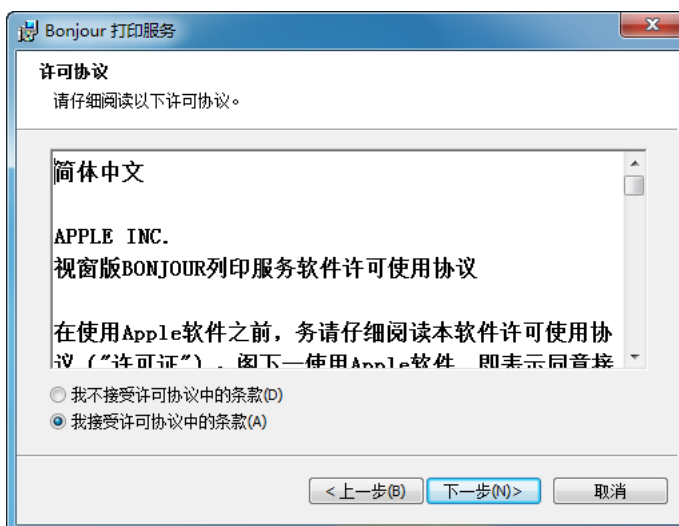
Bonjour 程序旨在建立和监视网络打印机。Bonjour 打印机向导会将 Brady 打印机建立为网络打印机。

7. 单击“下一步”。



Apple 最终用户许可协议将会显示。

8. 在阅读后，请单击“我接受许可协议中的条款”，然后单击“下一步”以继续。

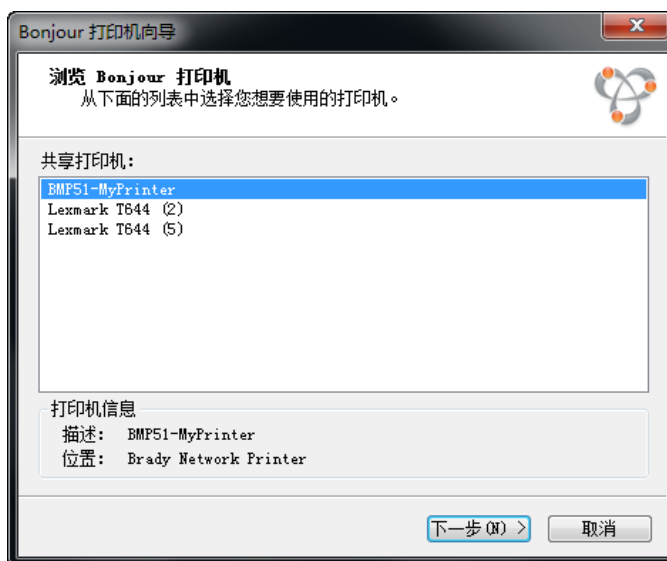




9. 单击分配的网络打印机名称。

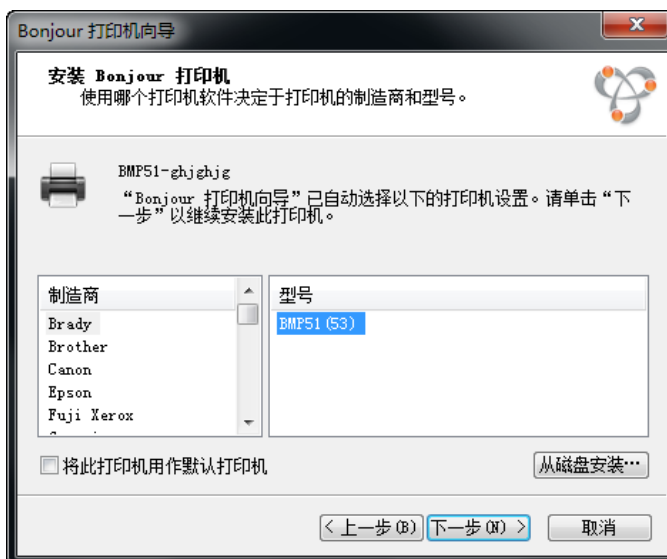
为了更容易识别，您在之前分配的名称和描述会显示在屏幕左下角。

10. 单击“下一步”。

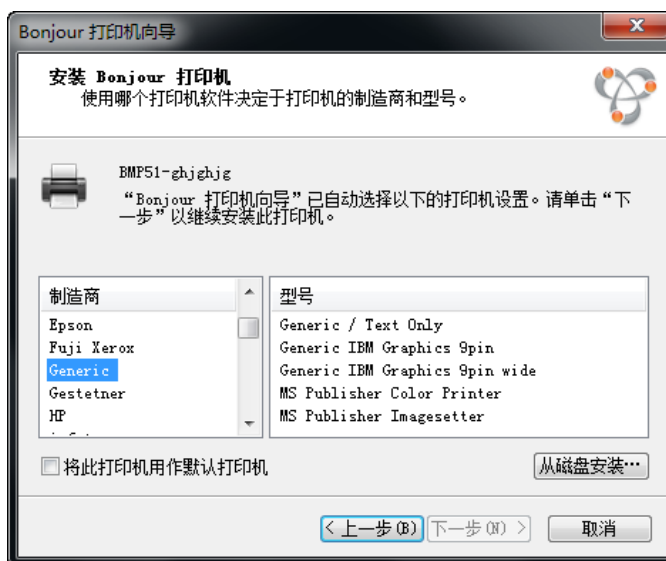


11. 在“制造商”字段中，单击 Brady（制造商按字母顺序排序）；然后在“型号”字段，单击要安装的打印机。

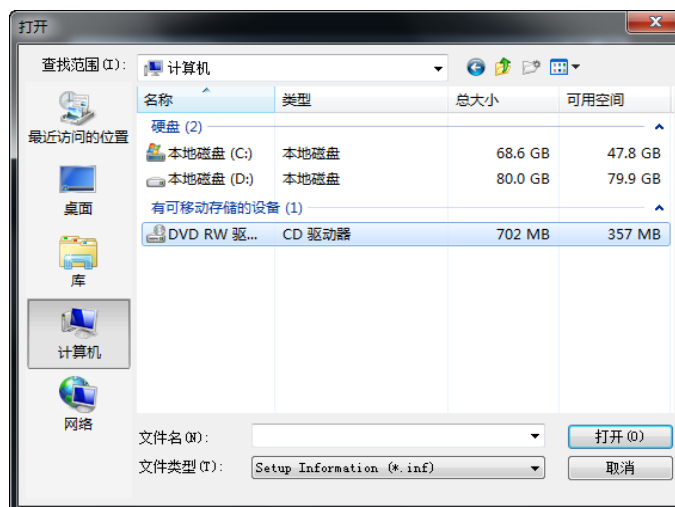
12. 单击“下一步”。



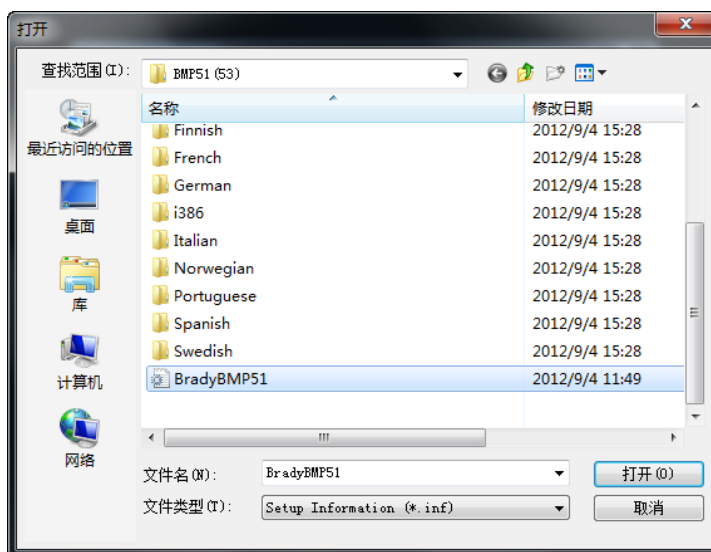
13. 如果无法在“制造商”字段中找到 Brady，请单击“从磁盘安装”。



14. 浏览提供的 CD，找到适用于您的打印机型号的 .INF 文件。



右侧的示例显示了安装 BMP51 打印机所需的 .inf 文件。



15. 在 Bonjour 打印机向导完成后，单击“完成”。



16. Brady 打印机安装完成。单击“完成”以退出向导。



## 仅安装 USB 驱动程序

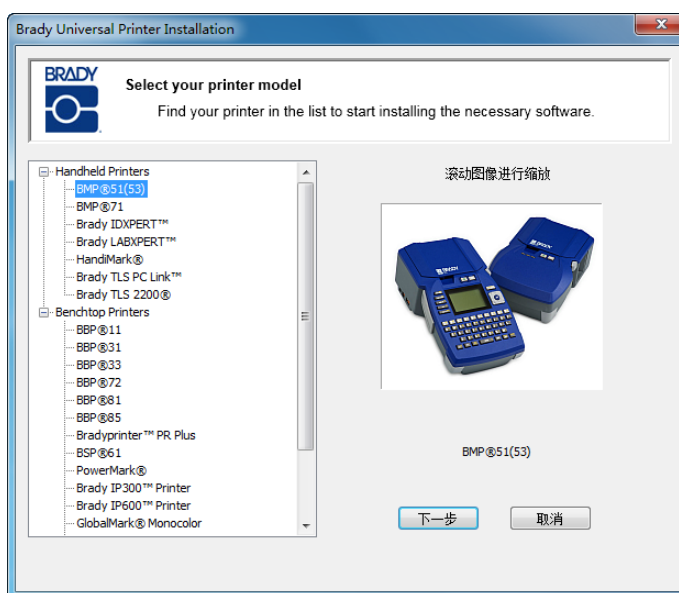
如果打算仅使用 USB 电缆将 PC 中的打印作业发送给打印机，请使用此安装过程。

要为 Brady 打印机安装打印机驱动程序并安装 Brady 网卡配置实用工具，请执行以下步骤：

1. 确保打印机和 PC 未通过 USB 电缆连接。
2. 将 Brady 打印机驱动程序光盘插入计算机的 CD 驱动器。

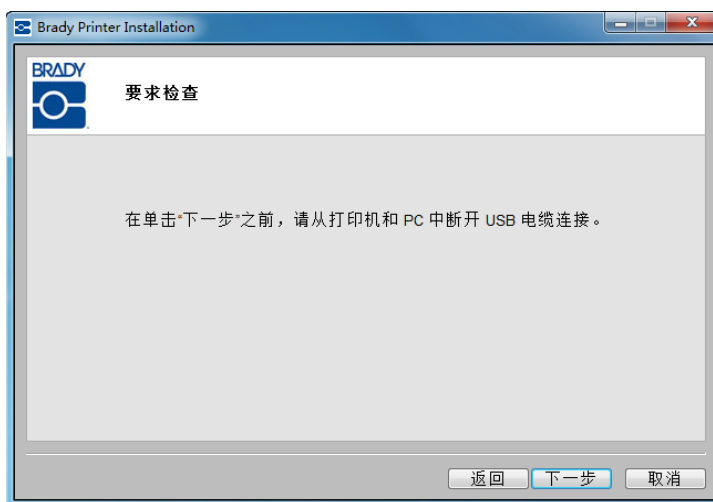
安装向导会自动启动。

3. 打开打印机。
4. 单击要安装的打印机型号。
5. 单击“下一步”。



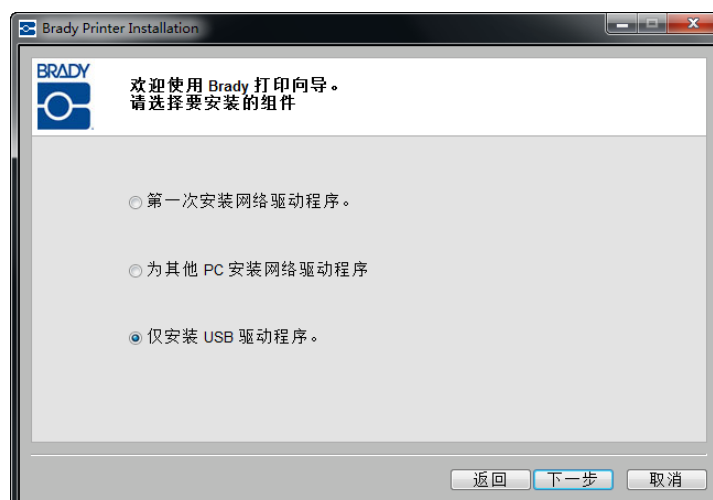
6. 如果打印机和 PC 仍通过 USB 电缆相连，请立即断开连接。

7. 单击“下一步”。

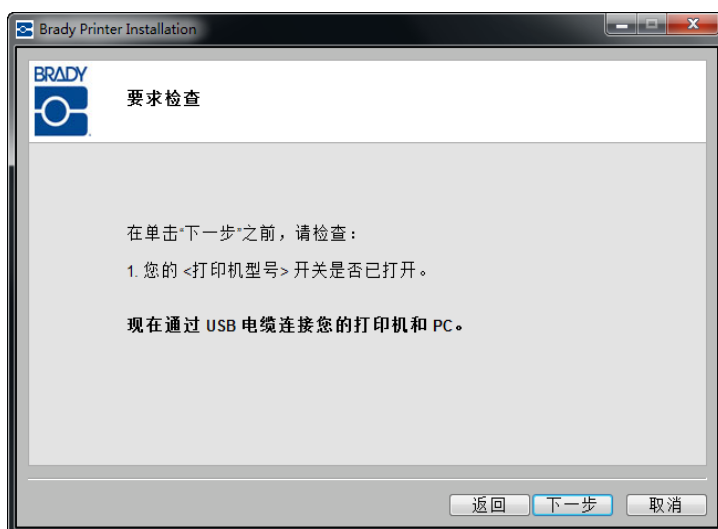


8. 单击“仅安装 USB 驱动程序”单选按钮。

9. 单击“下一步”。



10. 通过 USB 电缆连接您的打印机和 PC。



如果显示“Found New Hardware Wizard”（查找新硬件向导），请继续执行步骤 11，否则请跳至第 45 页上的步骤 15。


11. 单击“是，这一次和每次连接设备时”单选按钮，然后单击“下一步”。



12. 单击“自动安装软件（建议）”单选按钮，然后单击“下一步”。



安装会继续进行。

13. 完成时，请单击“完成”  以关闭向导。

14. 单击“下一步”。





15. 在成功安装 Brady 网卡配置实用工具和 USB 驱动程序后，单击“完成”。



## 首次针对特殊打印进行安装

在无路由的情况下使用此安装过程将 PC 无线连接到打印机。这就是所谓的对等连接。使用无线连接，您可以从办公室之外将打印作业发送给打印机。

设置特殊打印包含以下三个步骤：

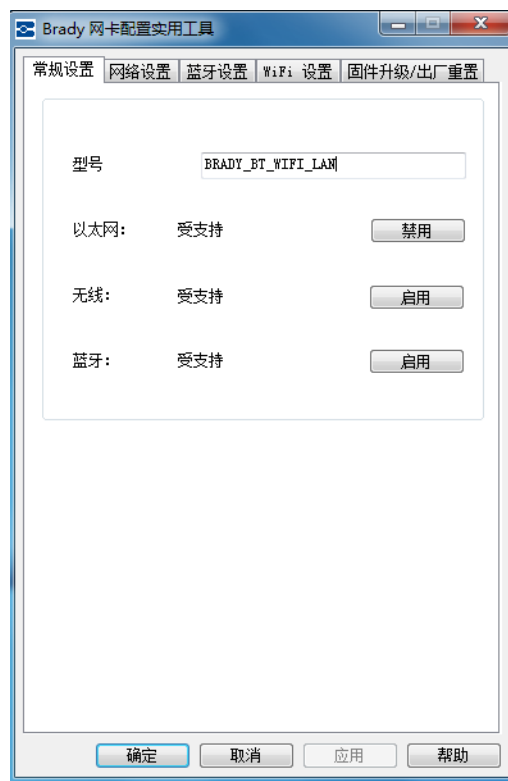
1. 安装 USB 驱动程序。
2. 建立特殊连接
3. 安装网络驱动程序

### **安装 USB 驱动程序**

请按照针对 USB 安装的步骤 1 至 10（从[第 41 页](#)开始）进行操作。

## 建立特殊连接

1. 通过选择“开始”>“程序”>“Brady”>“Brady 网卡”>“Brady 网卡配置实用工具”，打开 Brady 网卡配置实用工具。
2. 单击“常规设置”选项卡（如果尚未显示）。
3. 检查无线是否已启用。如果被禁用，请单击“启用”来启用 WiFi 设置。



该应用程序会执行 WiFi 扫描并显示可用网络列表。



- 单击“特殊”单选按钮，输入 SSID（网络名称）和通道。



5. 单击“连接”。

WiFi 设置将会更新。



查看 PC 检测到的无线网络：

6. 选择“开始”>“连接至”>“无线网络连接”>“查看无线网络”。

7. 单击之前输入的 SSID（网络名称）。  
该图标表明它是对等连接。

8. 单击“连接”。

特殊连接已建立。



**注：** 安装程序会自动检测您选择的网络是“个人”网络还是“企业”网络。

## 个人网络

如果您从列表中选择无线网络是个人网络，则网络名称 (SSID) 和网络认证会自动显示。



**9.** 请为所选网络输入密钥。

如果您不知道密码或安全类型，请与网络管理员联系。

**10.** 单击“连接”。





企业网络

如果您从列表中选择无线网络是企业网络，则必须提供认证类型、用户名和密码。



11. 单击下拉箭头，选择“认证类型”。（如果您不知道“认证类型”，请与网络管理员核实一下。）
12. 如果适用，请输入用户名和密码。请与网络管理员核实一下，以确定是否已为您分配了用户名。

**注：**依据所选的“认证类型”，可能需要也可能不需要用户名、密码和证书。有关详细信息，请参阅第 14 页上的认证表。

13. 准备就绪后，单击“连接”。



## 定义其他网络

如果您未在列表中看到您的网络，您可以选择“其他”，手动指定网络。您必须清楚网络名称 (SSID)、安全是否应用以及密钥（如果适用）。您可以从网络管理员那里获得这些信息。

命名其他网络：

1. 在“WiFi 设置”屏幕中，单击“其他”

 按钮。



个人网络通常会将 PC 连接至外围设备，例如打印机。企业网络连接着各种公司运营地点，例如生产点、总部、远程办公室和商店，以共享计算机资源。

2. 在“其他”网络屏幕中，单击“个人网络”或“企业网络”单选按钮以最好地描述此网络。



## 个人网络

3. 如果单击“个人网络”，请输入网络名称 (SSID)
4. 在“安全”字段中，单击下拉箭头并选择安全类型。

根据所选的“安全”，您可能需要或不需提供密钥。有关详细信息，请参阅第 14 页上的认证方法表和认证类型表。

---

**注：**您不必为个人网络提供认证类型。

---

5. 转至第 58 页上的步骤 10。



## 企业网络

如果单击“企业网络”：

6. 输入网络名称 (SSID)
7. 在“安全”字段中，单击下拉箭头并选择安全类型。
8. 单击下拉箭头，选择“认证类型”。（如果您不知道“认证类型”，请与网络管理员核实一下。）
9. 如果适用，请输入用户名和密码。请与网络管理员核实一下，以确定是否已为您分配了用户名。

**注：**依据所选的“认证类型”，可能需要也可能不需要用户名、密码和证书。有关详细信息，请参阅[第 14 页](#)上的认证表。

10. 准备就绪后，单击“连接”。

## 安装网络驱动程序

要安装网络驱动程序，请参阅安装其他 PC 的步骤 1 至 13（从[第 34 页](#)开始）。

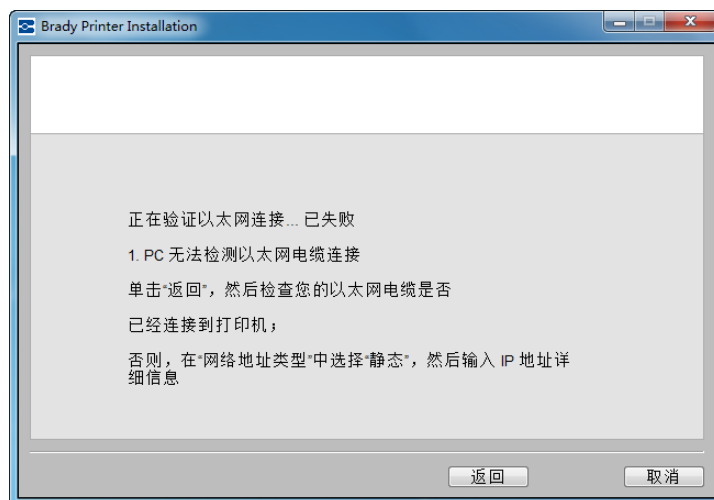


## 故障诊断

### 以太网连接失败

以太网连接可能会因以下两个原因而失败:

1. 以太网电缆无法连接到打印机。
2. PC 和打印机不在同一网络中。



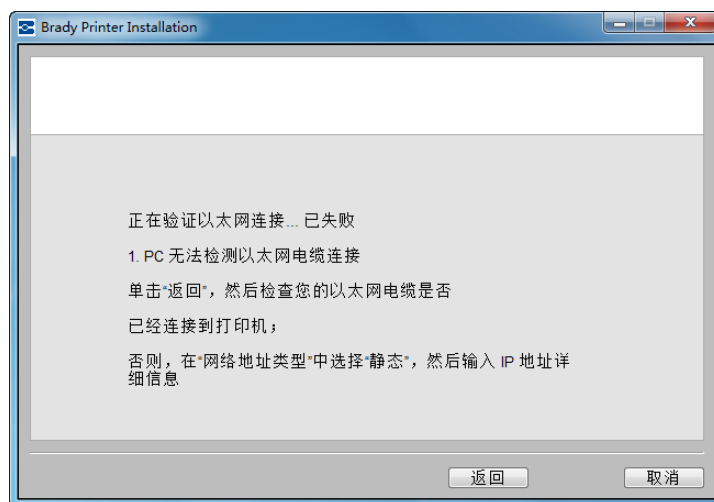
#### 以太网电缆未连接

1. 单击“返回”。
2. 请确保以太网电缆已连接到打印机。
3. 单击“下一步”。



## PC 和打印机不在同一网络中

1. 单击“返回”。



2. 确认您的打印机和 PC 已连接到同一网络。（请参阅第 28 页上的连接图。）

或者

单击网络地址类型：“静态”，然后输入 IP 地址详细信息。

**注：**如果已选择同一网络，但连接仍就失败，则防火墙阻止了该连接。在此情况下，请与网络管理员联系。





## WiFi 连接失败

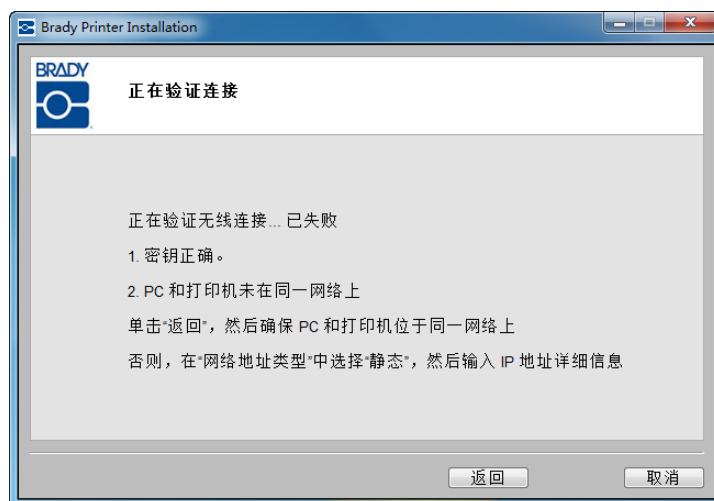
WiFi 连接可能会因以下两个原因而失败：

1. PC 和打印机不在同一网络中。
2. 输入了错误密钥或安全代码。

### PC 和打印机不在同一网络中

#### 个人网络

1. 单击“返回”。



2. 确认您的打印机和 PC 已连接到同一网络。（请参阅第 28 页上的连接图。）

或者

单击网络地址类型：“静态”，然后输入 IP 地址详细信息。

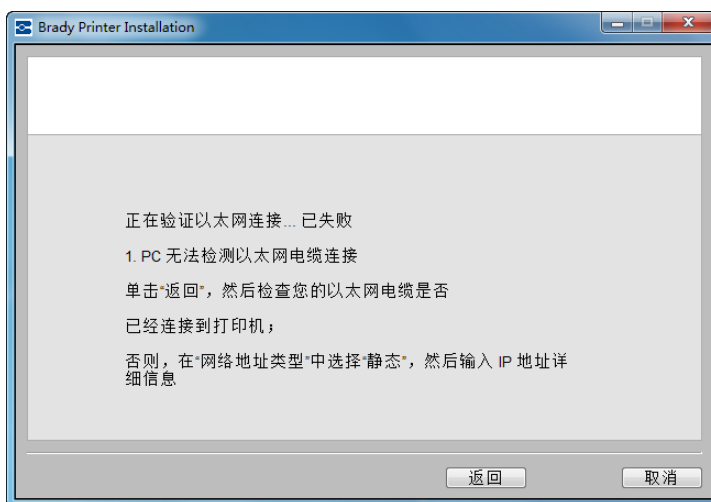
**注：**如果已选择同一网络，但连接仍就失败，则防火墙阻止了该连接。在此情况下，请与网络管理员联系。



3. 准备就绪后，单击“下一步”。

企业网络：

1. 单击“返回”。



2. 确认您的打印机和 PC 位于同一网络中。

或者

单击网络地址类型：“静态”，然后输入 IP 地址详细信息。

3. 准备就绪后，单击“下一步”。

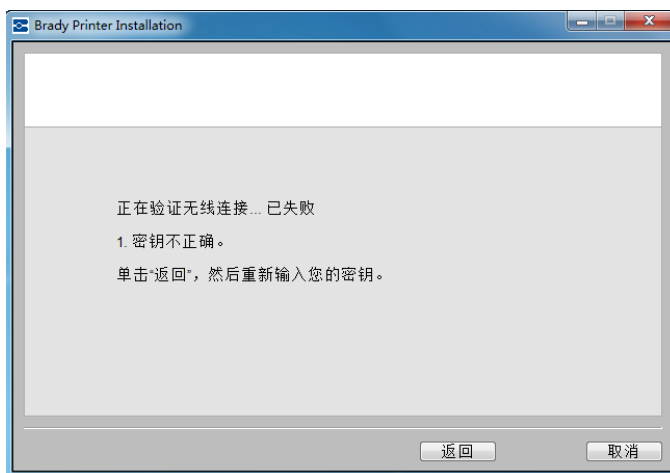


## 错误密钥或安全模式

### 个人网络

如果连接到个人网络失败，则很可能是密钥不正确。更正密钥：

1. 单击“返回”。



2. 重新输入正确的密钥。



**注：**如果在网络列表中选择了“其他”，您还需要输入安全模式。

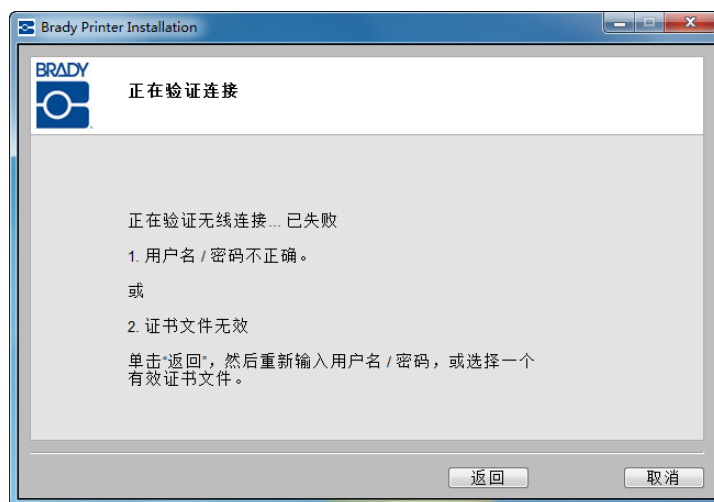
3. 单击“下一步”以继续安装。



### 企业网络

如果到企业网络的连接失败，则可能是用户名、密码或证书不正确。更正密钥和 / 或证书：

1. 单击“返回”。



2. 重新输入正确的用户名或密码。
- 或者，根据所选认证类型，如果需要证书：
3. 重新输入证书授权。
4. 单击“下一步”以继续安装。



**注：**如果在网络列表中选择了“其他”，您还需要输入安全模式。

5. 单击“安全”字段中的下拉列表，然后选择正确的安全模式。
6. 单击“下一步”以继续安装。



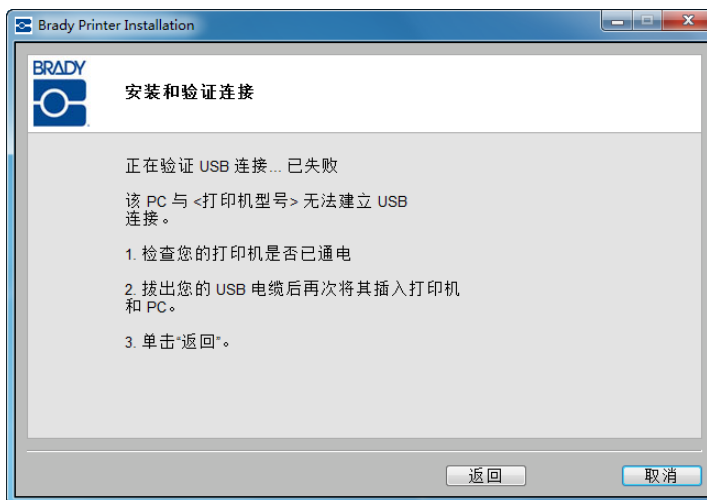
## USB 连接失败

USB 连接可能会因以下两个原因而失败：

- 打印机处于关闭状态。
- 未连接 USB 电缆。

如果连接失败：

1. 单击“返回”。
2. 加电开启打印机并连接 USB 电缆。
3. 单击“下一步”重试。



## Brady 网卡配置实用工具

在安装了网络驱动程序后，配置实用工具也已安装并自动位于 Windows 程序“开始”按钮下的“程序”中。使用配置实用工具来调整或更改您最初安装的配置。

访问该实用工具：

1. 选择“开始”>“程序”>“Brady”>“Brady 网卡”>“Brady 网卡配置实用工具”。

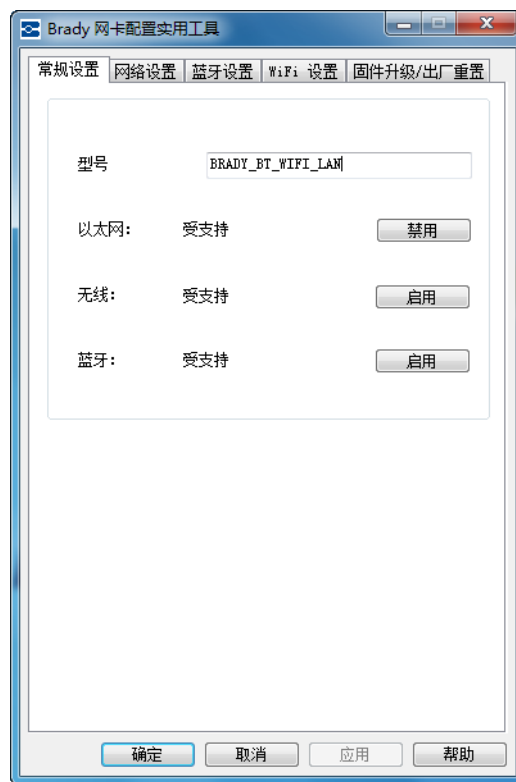
一个对话框将会显示，其中有多选项卡。

### 常规设置

在“常规设置”选项卡中，会识别出 Brady 网卡的型号并列出之前定义的几个连接。

更改各受支持配置的状态：

1. 单击“启用/禁用”按钮更改当前连接的当前状态。
2. 单击“确定”，以接受更改并退出对话框。



## 网络设置

“网络设置”选项卡显示您为打印机指定的唯一名称以及其使用的地址类型。

DHCP 是建议的设置。

如果选择了“静态”，则必须填写“IP 地址”、“子网掩码”和“默认网关”字段。

The screenshot shows the 'Brady 网卡配置实用工具' (Brady Network Configuration Utility) window with the '网络设置' (Network Settings) tab selected. The window contains the following fields and options:

- 打印机描述** (Printer Description): MyPrinter
- 网络地址类型** (Network Address Type): ☒ DHCP, ☐ Static
- IP 地址 \*** (IP Address): 192 . 168 . 0 . 112
- 子网掩码 \*** (Subnet Mask): 255 . 255 . 255 . 0
- 默认网关 \*** (Default Gateway): 192 . 168 . 0 . 1
- DNS 服务器 (主要)** (DNS Server (Primary)): 192 . 168 . 0 . 1
- DNS 服务器 (辅助)** (DNS Server (Secondary)): 0 . 0 . 0 . 0

\* = 必填字段 (Required field)

Buttons at the bottom: 确定 (OK), 取消 (Cancel), 应用 (Apply), 帮助 (Help).



## WiFi 设置

“WiFi 设置”选项卡显示：

- 网络类型 - 架构和特殊。
- 当前连接网络。
- 当前连接网络的安全设置。

在使用路由器将打印机连接到 PC 时，请选择“架构”。这是最常见的情况。

1. 如果希望在不使用路由情况下将打印机直接连接到 PC，请选择“特殊”。
2. 输入 SSID（网络名称）和通道。



3. 从呈现的列表中，单击网络。

#### 个人网络

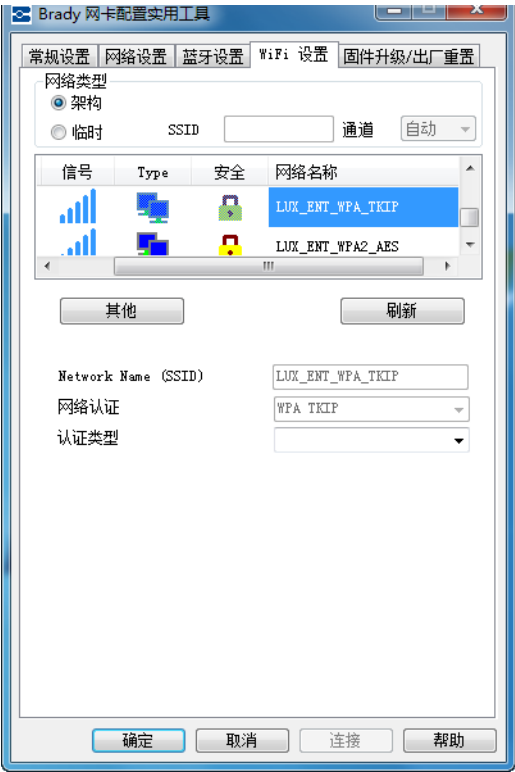
如果从列表中选择网络为“个人”网络，则您必须输入网络密钥。“网络名称 (SSID)”字段无法编辑。

4. 单击“网络密钥”字段并输入密钥。
5. 准备就绪后，单击“连接”。



企业网络

如果从列表中选择的是“企业”网络，则您必须输入认证类型、用户名和密码。“网络名称 (SSID)”和“网络认证”字段无法编辑。



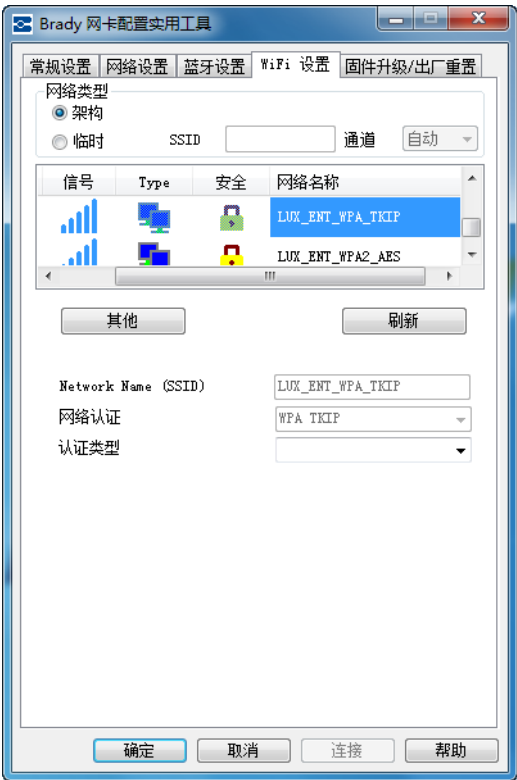
6. 单击“认证类型”字段中的下拉箭头，然后选择正确的认证类型。
7. 单击“用户名”字段，输入用户名。
8. 单击“密码”字段，输入密码。
9. 准备就绪后，单击“连接”。



定义其他网络

定义不在列表中的其他网络：

10. 单击 其他 按钮。



11. 在“其他”网络屏幕中，单击“个人网络”或“企业网络”单选按钮以最好地描述此网络。



个人网络

1. 如果单击“个人网络”，请输入网络名称 (SSID)
2. 单击下拉箭头，选择“认证类型”。（如果您不知道“认证类型”，请与网络管理员核实一下。）

根据所选的“网络认证”，您可能需要或不必提供网络密钥。有关详细信息，请参阅第 14 页上的认证方法表和认证类型表。



## 企业网络

如果单击“企业网络”：

3. 输入网络名称 (SSID)
4. 在“网络认证”字段中，单击下拉箭头并选择认证方法。
5. 在“认证类型”字段中，单击下拉箭头并选择“认证类型”。（如果您不知道“认证类型”，请与网络管理员核实一下。）
6. 如果适用，请输入用户名和密码。请与网络管理员核实一下，以确定是否已为您分配了用户名。

**注：**依据所选的“认证类型”，可能需要也可能不需要用户名、密码和证书。有关详细信息，请参阅第 14 页上的认证表。

7. 单击“连接”以接受更改。





## 蓝牙设置

“蓝牙设置”选项卡显示打印机中安装的蓝牙配置的常规设备名称。默认名称为 Brady。您可以在此项卡中更改默认名称和 PIN。

### 名称

更改名称：

1. 在“设备名称”字段，突出显示默认名称，然后在突出显示的文本上直接输入新名称。

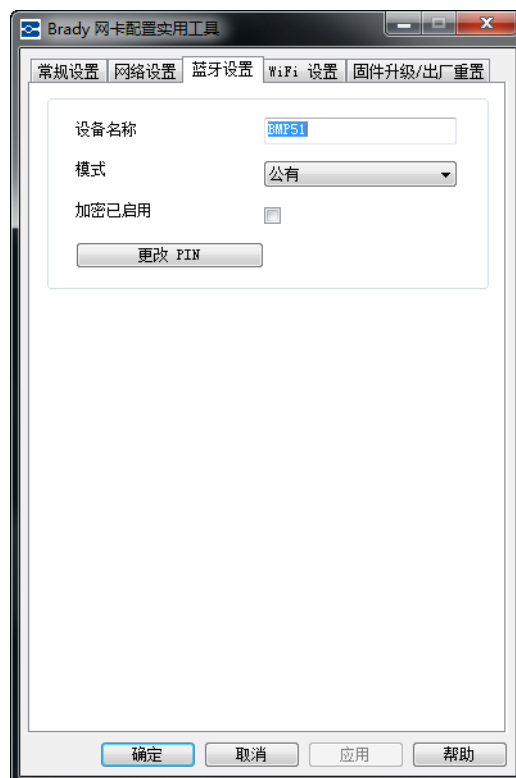
### 模式

1. 单击“模式”字段中的下拉箭头，选择蓝牙连接的工作模式。

**公有** - Brady 网卡可被任何蓝牙设备发现并进行连接。

**私有** - Brady 网卡无法被新蓝牙设备发现，但它可供连接。

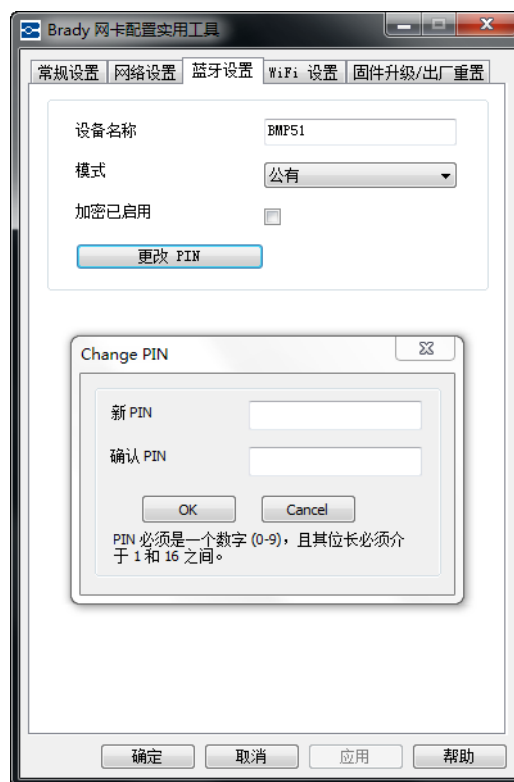
**关闭** - Brady 网卡无法被发现和连接。



## PIN

蓝牙连接需要使用 PIN。默认 PIN 为 0000。  
如果希望更改 PIN:

1. 单击“更改 PIN”按钮。
2. 在“新 PIN:”字段中，输入新 PIN。
3. 在“确认 PIN:”字段中，重新输入新 PIN。
4. 单击“确定”接受新 PIN 并返回到“蓝牙设置”选项卡。
5. 再次单击“确定”，以接受更改并退出对话框。

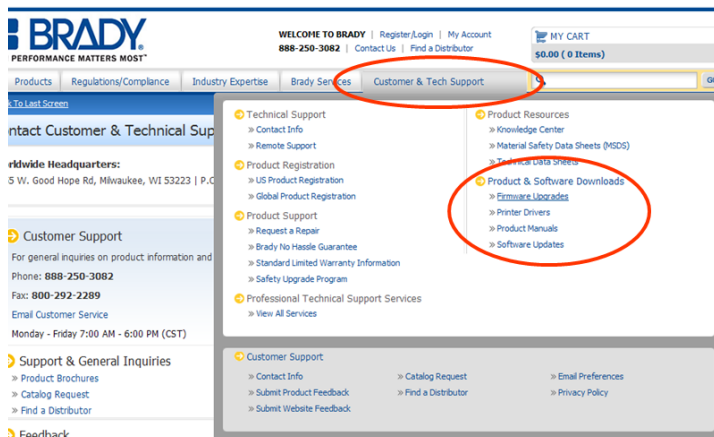


## 固件升级 / 出厂重置

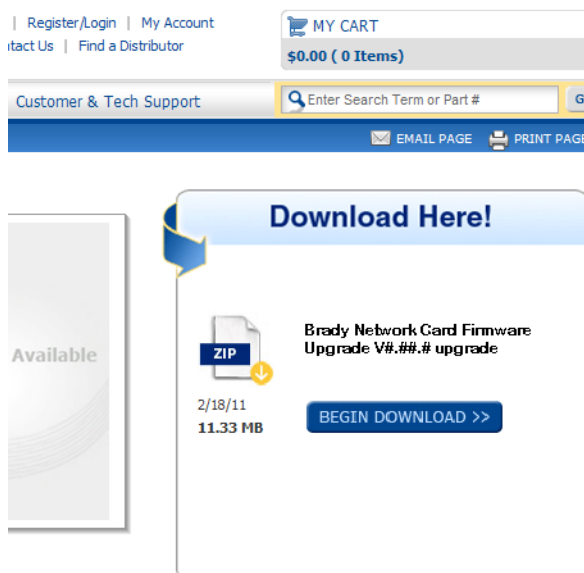
新版本的固件可用时，您可以通过配置实用工具的“固件升级 / 出厂重置”选项卡升级 Brady 网卡。

升级固件：

1. 访问 Brady 网站，网站为：  
www.bradyid.com。
2. 单击“Customer & Tech Support”
3. 在“Product & Software Downloads”下，单击 Brady 网卡“Firmware Upgrades”。



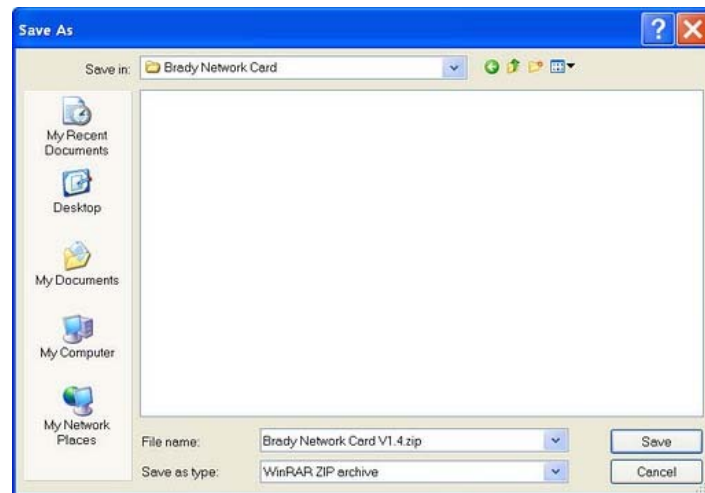
4. 在显示的列表中，单击要下载的升级，然后单击 **BEGIN DOWNLOAD >>** 按钮。



5. 在“File Download”（文件下载）屏幕中，单击“Save”（保存）。



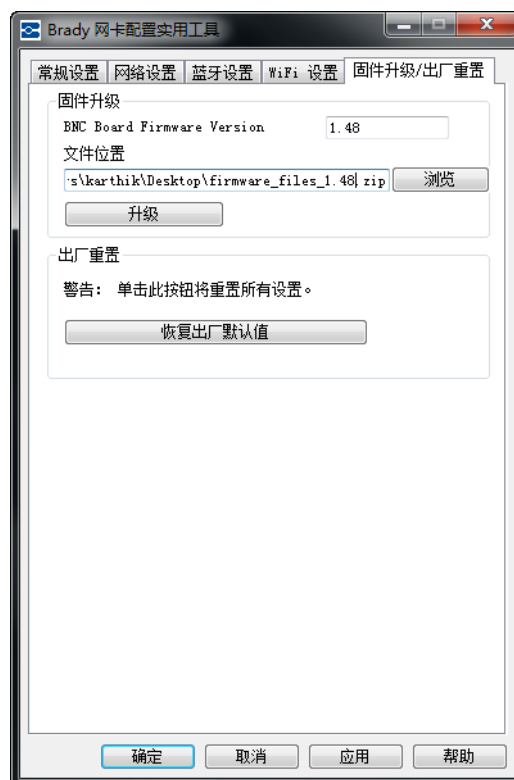
6. 使用标准 Windows 步骤，确定要在其中保存下载数据的目录。



7. 在该配置实用工具屏幕的“固件升级 / 出厂重置”选项卡中，单击 **浏览** 按钮。
8. 找到您保存下载 ZIP 文件的目录，然后单击“打开”。
9. 在“固件升级/出厂重置”选项卡中，单击 **升级** 按钮。

升级程序信息会自动安装在系统中。

10. 单击“确定”，以接受更改并退出对话框。



## 出厂重置

如果希望将所有设置返回到原始出厂设置（默认值）：

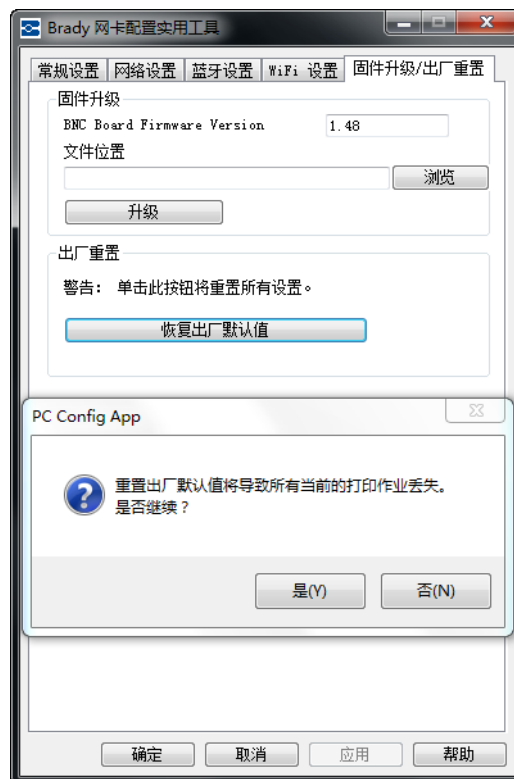
1. 在该配置实用工具的“固件升级/出厂重置”选项卡中，单击

**恢复出厂默认值** 按钮。

显示的警告消息指出所有之前定义的设置将会被删除。

2. 如果希望继续默认恢复操作，请单击警告消息上的“是”。
3. 单击对话框中的“确定”，以接受更改并退出对话框。

之前的设置将会被删除。您现在即可重新配置网络和网卡配置了。







**Brady Worldwide Inc.**

6555 West Good Hope Road

Milwaukee, WI 53223 U.S.A.

Telephone: 414-358-6600 USA Domestic

Facsimile: 414-438-6958

**Websites**

**USA:** [www.bradyid.com](http://www.bradyid.com).

**Canada:** [www.bradycanada.com](http://www.bradycanada.com)

**Mexico:** [www.bradylatinamerica.com](http://www.bradylatinamerica.com)

**Asia:** [www.bradycorp.com](http://www.bradycorp.com)

**Europe:** [www.bradyeurope.com](http://www.bradyeurope.com)