



## Copyright Notice

Portions of the Brady Network Card are based on the following software libraries.

### **BlueZ - Bluetooth protocol stack for Linux**

Copyright (C) 2000-2001 Qualcomm Incorporated

Copyright (C) 2002-2003 Maxim Krasnyansky <maxk@qualcomm.com>

Copyright (C) 2002-2006 Marcel Holtmann marcel@holtmann.org

### **WPA Supplicant**

Copyright (c) 2003-2006, Jouni Malinen <jkmaline@cc.hut.fi> and contributors All Rights Reserved.

### **Perl Kit, Version 5**

Copyright (C) 1993, 1994, 1995, 1996, 1997, 1998, 1999, 2000, 2001, 2002, 2003, 2004, 2005, 2006 by Larry Wall and others

### **zlib/libpng**

Copyright (C) 1995-2004 Jean-loup Gailly and Mark Adler.

# Open Source Licensing Information

The Brady Network Card contains open source software. Given our obligations under these licenses, we make the following copyright notices and license terms available to you. For more information, please visit our open source licensing website at <http://www.bradyid.com/opensource>.

A. The Brady Network Card contains open source software licensed under Version 2 of the GNU General Public License.

## GNU GENERAL PUBLIC LICENSE

Version 2, June 1991

Copyright (C) 1989, 1991 Free Software Foundation, Inc., 51 Franklin Street, Fifth Floor, Boston, MA 02110-1301 USA Everyone is permitted to copy and distribute verbatim copies of this license document, but changing it is not allowed.

### Preamble

The licenses for most software are designed to take away your freedom to share and change it. By contrast, the GNU General Public License is intended to guarantee your freedom to share and change free software--to make sure the software is free for all its users. This General Public License applies to most of the Free Software Foundation's software and to any other program whose authors commit to using it. (Some other Free Software Foundation software is covered by the GNU Lesser General Public License instead.) You can apply it to your programs, too.

When we speak of free software, we are referring to freedom, not price. Our General Public Licenses are designed to make sure that you have the freedom to distribute copies of free software (and charge for this service if you wish), that you receive source code or can get it if you want it, that you can change the software or use pieces of it in new free programs; and that you know you can do these things.

To protect your rights, we need to make restrictions that forbid anyone to deny you these rights or to ask you to surrender the rights. These restrictions translate to certain responsibilities for you if you distribute copies of the software, or if you modify it.

For example, if you distribute copies of such a program, whether gratis or for a fee, you must give the recipients all the rights that you have. You must make sure that they, too, receive or can get the source code. And you must show them these terms so they know their rights.

We protect your rights with two steps: (1) copyright the software, and (2) offer you this license which gives you legal permission to copy, distribute and/or modify the software.

Also, for each author's protection and ours, we want to make certain that everyone understands that there is no warranty for this free software. If the software is modified by someone else and passed on, we want its recipients to know that what they have is not the original, so that any problems introduced by others will not reflect on the original authors' reputations.

Finally, any free program is threatened constantly by software patents. We wish to avoid the danger that redistributors of a free program will individually obtain patent licenses, in effect making the program proprietary. To prevent this, we have made it clear that any patent must be licensed for everyone's free use or not licensed at all.

The precise terms and conditions for copying, distribution and modification follow.

GNU GENERAL PUBLIC LICENSE  
TERMS AND CONDITIONS FOR COPYING, DISTRIBUTION AND MODIFICATION

0. This License applies to any program or other work which contains a notice placed by the copyright holder saying it may be distributed under the terms of this General Public License. The "Program", below, refers to any such program or work, and a "work based on the Program" means either the Program or any derivative work under copyright law:

that is to say, a work containing the Program or a portion of it, either verbatim or with modifications and/or translated into another language. (Hereinafter, translation is included without limitation in the term "modification".) Each licensee is addressed as "you".

Activities other than copying, distribution and modification are not covered by this License; they are outside its scope. The act of running the Program is not restricted, and the output from the Program is covered only if its contents constitute a work based on the Program (independent of having been made by running the Program). Whether that is true depends on what the Program does.

1. You may copy and distribute verbatim copies of the Program's source code as you receive it, in any medium, provided that you conspicuously and appropriately publish on each copy an appropriate copyright notice and disclaimer of warranty; keep intact all the notices that refer to this License and to the absence of any warranty; and give any other recipients of the Program a copy of this License along with the Program.

You may charge a fee for the physical act of transferring a copy, and you may at your option offer warranty protection in exchange for a fee.

2. You may modify your copy or copies of the Program or any portion of it, thus forming a work based on the Program, and copy and distribute such modifications or work under the terms of Section 1 above, provided that you also meet all of these conditions:

a) You must cause the modified files to carry prominent notices stating that you changed the files and the date of any change.

b) You must cause any work that you distribute or publish, that in whole or in part contains or is derived from the Program or any part thereof, to be licensed as a whole at no charge to all third parties under the terms of this License.

c) If the modified program normally reads commands interactively when run, you must cause it, when started running for such interactive use in the most ordinary way, to print or display an announcement including an appropriate copyright notice and a notice that there is no warranty (or else, saying that you provide a warranty) and that users may redistribute the program under these conditions, and telling the user how to view a copy of this License. (Exception: if the Program itself is interactive but does not normally print such an announcement, your work based on the Program is not required to print an announcement.)

These requirements apply to the modified work as a whole. If identifiable sections of that work are not derived from the Program, and can be reasonably considered independent and separate works in themselves, then this License, and its terms, do not apply to those sections when you distribute them as separate works. But when you distribute the same sections as part of a whole which is a work based on the Program, the distribution of the whole must be on the terms of this License, whose permissions for other licensees extend to the entire whole, and thus to each and every part regardless of who wrote it.

Thus, it is not the intent of this section to claim rights or contest your rights to work written entirely by you; rather, the intent is to exercise the right to control the distribution of derivative or collective works based on the Program.

In addition, mere aggregation of another work not based on the Program with the Program (or with a work based on the Program) on a volume of a storage or distribution medium does not bring the other work under the scope of this License.

3. You may copy and distribute the Program (or a work based on it, under Section 2) in object code or executable form under the terms of Sections 1 and 2 above provided that you also do one of the following:

a) Accompany it with the complete corresponding machine-readable source code, which must be distributed under the terms of Sections 1 and 2 above on a medium customarily used for software interchange; or,

b) Accompany it with a written offer, valid for at least three years, to give any third party, for a charge no more than your cost of physically performing source distribution, a complete machine-readable copy of the corresponding source code, to be distributed under the terms of Sections 1 and 2 above on a medium customarily used for software interchange; or,

c) Accompany it with the information you received as to the offer to distribute corresponding source code. (This alternative is allowed only for noncommercial distribution and only if you received the program in object code or executable form with such an offer, in accord with Subsection b above.)

The source code for a work means the preferred form of the work for making modifications to it. For an executable work, complete source code means all the source code for all modules it contains, plus any associated interface definition files, plus the scripts used to control compilation and installation of the executable. However, as a special exception, the source code distributed need not include anything that is normally distributed (in either source or binary form) with the major components (compiler, kernel, and so on) of the operating system on which the executable runs, unless that component itself accompanies the executable.

If distribution of executable or object code is made by offering access to copy from a designated place, then offering equivalent access to copy the source code from the same place counts as distribution of the source code, even though third parties are not compelled to copy the source along with the object code.

4. You may not copy, modify, sublicense, or distribute the Program except as expressly provided under this License. Any attempt otherwise to copy, modify, sublicense or distribute the Program is void, and will automatically terminate your rights under this License. However, parties who have received copies, or rights, from you under this License will not have their licenses terminated so long as such parties remain in full compliance.

5. You are not required to accept this License, since you have not signed it. However, nothing else grants you permission to modify or distribute the Program or its derivative works. These actions are prohibited by law if you do not accept this License. Therefore, by modifying or distributing the Program (or any work based on the Program), you indicate your acceptance of this License to do so, and all its terms and conditions for copying, distributing or modifying the Program or works based on it.

6. Each time you redistribute the Program (or any work based on the Program), the recipient automatically receives a license from the original licensor to copy, distribute or modify the Program subject to these terms and conditions. You may not impose any further restrictions on the recipients' exercise of the rights granted herein. You are not responsible for enforcing compliance by third parties to this License.

7. If, as a consequence of a court judgment or allegation of patent infringement or for any other reason (not limited to patent issues), conditions are imposed on you (whether by court order, agreement or otherwise) that contradict the conditions of this License, they do not excuse you from the conditions of this License. If you cannot distribute so as to satisfy simultaneously your obligations under this License and any other pertinent obligations, then as a consequence you may not distribute the Program at all. For example, if a patent license would not permit royalty-free redistribution of the Program by all those who receive copies directly or indirectly through you, then the only way you could satisfy both it and this License would be to refrain entirely from distribution of the Program.

If any portion of this section is held invalid or unenforceable under any particular circumstance, the balance of the section is intended to apply and the section as a whole is intended to apply in other circumstances.

It is not the purpose of this section to induce you to infringe any patents or other property right claims or to contest validity of any such claims; this section has the sole purpose of protecting the integrity of the free software distribution system, which is implemented by public license practices. Many people have made generous contributions to the wide range of software distributed through that system in reliance on consistent application of that system; it is up to the author/donor to decide if he or she is willing to distribute software through any other system and a licensee cannot impose that choice.

This section is intended to make thoroughly clear what is believed to be a consequence of the rest of this License.

8. If the distribution and/or use of the Program is restricted in certain countries either by patents or by copyrighted interfaces, the original copyright holder who places the Program under this License may add an explicit geographical distribution limitation excluding those countries, so that distribution is permitted only in or among countries not thus excluded. In such case, this License incorporates the limitation as if written in the body of this License.

9. The Free Software Foundation may publish revised and/or new versions of the General Public License from time to time. Such new versions will be similar in spirit to the present version, but may differ in detail to address new problems or concerns.

Each version is given a distinguishing version number. If the Program specifies a version number of this License which applies to it and "any later version", you have the option of following the terms and conditions either of that version or of any later version published by the Free Software Foundation. If the Program does not specify a version number of this License, you may choose any version ever published by the Free Software Foundation.

10. If you wish to incorporate parts of the Program into other free programs whose distribution conditions are different, write to the author to ask for permission. For software which is copyrighted by the Free Software Foundation, write to the Free Software Foundation; we sometimes make exceptions for this. Our decision will be guided by the two goals of preserving the free status of all derivatives of our free software and of promoting the sharing and reuse of software generally.

## NO WARRANTY

11. BECAUSE THE PROGRAM IS LICENSED FREE OF CHARGE, THERE IS NO WARRANTY FOR THE PROGRAM, TO THE EXTENT PERMITTED BY APPLICABLE LAW. EXCEPT WHEN OTHERWISE STATED IN WRITING THE COPYRIGHT HOLDERS AND/OR OTHER PARTIES PROVIDE THE PROGRAM "AS IS" WITHOUT WARRANTY OF ANY KIND, EITHER EXPRESSED OR IMPLIED, INCLUDING, BUT NOT LIMITED TO, THE IMPLIED WARRANTIES OF MERCHANTABILITY AND FITNESS FOR A PARTICULAR PURPOSE. THE ENTIRE RISK AS TO THE QUALITY AND PERFORMANCE OF THE PROGRAM IS WITH YOU. SHOULD THE PROGRAM PROVE DEFECTIVE, YOU ASSUME THE COST OF ALL NECESSARY SERVICING, REPAIR OR CORRECTION.

12. IN NO EVENT UNLESS REQUIRED BY APPLICABLE LAW OR AGREED TO IN WRITING WILL ANY COPYRIGHT HOLDER, OR ANY OTHER PARTY WHO MAY MODIFY AND/OR REDISTRIBUTE THE PROGRAM AS PERMITTED ABOVE, BE LIABLE TO YOU FOR DAMAGES, INCLUDING ANY GENERAL, SPECIAL, INCIDENTAL OR CONSEQUENTIAL DAMAGES ARISING OUT OF THE USE OR INABILITY TO USE THE PROGRAM (INCLUDING BUT NOT LIMITED TO LOSS OF DATA OR DATA BEING RENDERED INACCURATE OR LOSSES SUSTAINED BY YOU OR THIRD PARTIES OR A FAILURE OF THE PROGRAM TO OPERATE WITH ANY OTHER PROGRAMS), EVEN IF SUCH HOLDER OR OTHER PARTY HAS BEEN ADVISED OF THE POSSIBILITY OF SUCH DAMAGES.

## END OF TERMS AND CONDITIONS

B. The Brady Network Card contains open source software licensed under Version 2.1 of the GNU Lesser General Public License.

## GNU LESSER GENERAL PUBLIC LICENSE

Version 2.1, February 1999

Copyright (C) 1991, 1999 Free Software Foundation, Inc. 51 Franklin St, Fifth Floor, Boston, MA 02110-1301 USA Everyone is permitted to copy and distribute verbatim copies of this license document, but changing it is not allowed.

[This is the first released version of the Lesser GPL. It also counts as the successor of the GNU Library Public License, version 2, hence the version number 2.1.]

### Preamble

The licenses for most software are designed to take away your freedom to share and change it. By contrast, the GNU General Public Licenses are intended to guarantee your freedom to share and change free software--to make sure the software is free for all its users.

This license, the Lesser General Public License, applies to some specially designated software packages--typically libraries--of the Free Software Foundation and other authors who decide to use it. You can use it too, but we suggest you first think carefully about whether this license or the ordinary General Public License is the better strategy to use in any particular case, based on the explanations below.

When we speak of free software, we are referring to freedom of use, not price. Our General Public Licenses are designed to make sure that you have the freedom to distribute copies of free software (and charge for this service if you wish); that you receive source code or can get it if you want it; that you can change the software and use pieces of it in new free programs; and that you are informed that you can do these things.



To protect your rights, we need to make restrictions that forbid distributors to deny you these rights or to ask you to surrender these rights. These restrictions translate to certain responsibilities for you if you distribute copies of the library or if you modify it.

For example, if you distribute copies of the library, whether gratis or for a fee, you must give the recipients all the rights that we gave you. You must make sure that they, too, receive or can get the source code. If you link other code with the library, you must provide complete object files to the recipients, so that they can relink them with the library after making changes to the library and recompiling it. And you must show them these terms so they know their rights.

We protect your rights with a two-step method: (1) we copyright the library, and (2) we offer you this license, which gives you legal permission to copy, distribute and/or modify the library.

To protect each distributor, we want to make it very clear that there is no warranty for the free library. Also, if the library is modified by someone else and passed on, the recipients should know that what they have is not the original version, so that the original author's reputation will not be affected by problems that might be introduced by others. Finally, software patents pose a constant threat to the existence of any free program. We wish to make sure that a company cannot effectively restrict the users of a free program by obtaining a restrictive license from a patent holder. Therefore, we insist that any patent license obtained for a version of the library must be consistent with the full freedom of use specified in this license.

Most GNU software, including some libraries, is covered by the ordinary GNU General Public License. This license, the GNU Lesser General Public License, applies to certain designated libraries, and is quite different from the ordinary General Public License. We use this license for certain libraries in order to permit linking those libraries into non-free programs.

When a program is linked with a library, whether statically or using a shared library, the combination of the two is legally speaking a combined work, a derivative of the original library. The ordinary General Public License therefore permits such linking only if the entire combination fits its criteria of freedom. The Lesser General Public License permits more lax criteria for linking other code with the library.

We call this license the "Lesser" General Public License because it does Less to protect the user's freedom than the ordinary General Public License. It also provides other free software developers Less of an advantage over competing non-free programs. These disadvantages are the reason we use the ordinary General Public License for many libraries. However, the Lesser license provides advantages in certain special circumstances.

For example, on rare occasions, there may be a special need to encourage the widest possible use of a certain library, so that it becomes a de-facto standard. To achieve this, non-free programs must be allowed to use the library. A more frequent case is that a free library does the same job as widely used non-free libraries. In this case, there is little to gain by limiting the free library to free software only, so we use the Lesser General Public License.

In other cases, permission to use a particular library in non-free programs enables a greater number of people to use a large body of free software. For example, permission to use the GNU C Library in non-free programs enables many more people to use the whole GNU operating system, as well as its variant, the GNU/Linux operating system.

Although the Lesser General Public License is Less protective of the users' freedom, it does ensure that the user of a program that is linked with the Library has the freedom and the wherewithal to run that program using a modified version of the Library.

The precise terms and conditions for copying, distribution and modification follow. Pay close attention to the difference between a "work based on the library" and a "work that uses the library". The former contains code derived from the library, whereas the latter must be combined with the library in order to run.

## GNU LESSER GENERAL PUBLIC LICENSE TERMS AND CONDITIONS FOR COPYING, DISTRIBUTION AND MODIFICATION

0. This License Agreement applies to any software library or other program which contains a notice placed by the copyright holder or other authorized party saying it may be distributed under the terms of this Lesser General Public License (also called "this License"). Each licensee is addressed as "you".

A "library" means a collection of software functions and/or data prepared so as to be conveniently linked with application programs (which use some of those functions and data) to form executables.

The "Library", below, refers to any such software library or work which has been distributed under these terms. A "work based on the Library" means either the Library or any derivative work under copyright law: that is to say, a work containing the Library or a portion of it, either verbatim or with modifications and/or translated straightforwardly into another language. (Hereinafter, translation is included without limitation in the term "modification".)

"Source code" for a work means the preferred form of the work for making modifications to it. For a library, complete source code means all the source code for all modules it contains, plus any associated interface definition files, plus the scripts used to control compilation and installation of the library.

Activities other than copying, distribution and modification are not covered by this License; they are outside its scope. The act of running a program using the Library is not restricted, and output from such a program is covered only if its contents constitute a work based on the Library (independent of the use of the Library in a tool for writing it). Whether that is true depends on what the Library does and what the program that uses the Library does.

1. You may copy and distribute verbatim copies of the Library's complete source code as you receive it, in any medium, provided that you conspicuously and appropriately publish on each copy an appropriate copyright notice and disclaimer of warranty; keep intact all the notices that refer to this License and to the absence of any warranty; and distribute a copy of this License along with the Library.

You may charge a fee for the physical act of transferring a copy, and you may at your option offer warranty protection in exchange for a fee.

2. You may modify your copy or copies of the Library or any portion of it, thus forming a work based on the Library, and copy and distribute such modifications or work under the terms of Section 1 above, provided that you also meet all of these conditions:

- a) The modified work must itself be a software library.
- b) You must cause the files modified to carry prominent notices stating that you changed the files and the date of any change.
- c) You must cause the whole of the work to be licensed at no charge to all third parties under the terms of this License.

d) If a facility in the modified Library refers to a function or a table of data to be supplied by an application program that uses the facility, other than as an argument passed when the facility is invoked, then you must make a good faith effort to ensure that, in the event an application does not supply such function or table, the facility still operates, and performs whatever part of its purpose remains meaningful.

(For example, a function in a library to compute square roots has a purpose that is entirely well-defined independent of the application. Therefore, Subsection 2d requires that any application-supplied function or table used by this function must be optional: if the application does not supply it, the square root function must still compute square roots.)

These requirements apply to the modified work as a whole. If identifiable sections of that work are not derived from the Library, and can be reasonably considered independent and separate works in themselves, then this License, and its terms, do not apply to those sections when you distribute them as separate works. But when you distribute the same sections as part of a whole which is a work based on the Library, the distribution of the whole must be on the terms of this License, whose permissions for other licensees extend to the entire whole, and thus to each and every part regardless of who wrote it.

Thus, it is not the intent of this section to claim rights or contest your rights to work written entirely by you; rather, the intent is to exercise the right to control the distribution of derivative or collective works based on the Library.

In addition, mere aggregation of another work not based on the Library with the Library (or with a work based on the Library) on a volume of a storage or distribution medium does not bring the other work under the scope of this License.

3. You may opt to apply the terms of the ordinary GNU General Public License instead of this License to a given copy of the Library. To do this, you must alter all the notices that refer to this License, so that they refer to the ordinary GNU General Public License, version 2, instead of to this License. (If a newer version than version 2 of the ordinary GNU General Public License has appeared, then you can specify that version instead if you wish.) Do not make any other change in these notices.

Once this change is made in a given copy, it is irreversible for that copy, so the ordinary GNU General Public License applies to all subsequent copies and derivative works made from that copy.

This option is useful when you wish to copy part of the code of the Library into a program that is not a library.

4. You may copy and distribute the Library (or a portion or derivative of it, under Section 2) in object code or executable form under the terms of Sections 1 and 2 above provided that you accompany it with the complete corresponding machine-readable source code, which must be distributed under the terms of Sections 1 and 2 above on a medium customarily used for software interchange.

If distribution of object code is made by offering access to copy from a designated place, then offering equivalent access to copy the source code from the same place satisfies the requirement to distribute the source code, even though third parties are not compelled to copy the source along with the object code.

5. A program that contains no derivative of any portion of the Library, but is designed to work with the Library by being compiled or linked with it, is called a "work that uses the Library". Such a work, in isolation, is not a derivative work of the Library, and therefore falls outside the scope of this License.

However, linking a "work that uses the Library" with the Library creates an executable that is a derivative of the Library (because it contains portions of the Library), rather than a "work that uses the library". The executable is therefore covered by this License. Section 6 states terms for distribution of such executables.

When a "work that uses the Library" uses material from a header file that is part of the Library, the object code for the work may be a derivative work of the Library even though the source code is not. Whether this is true is especially significant if the work can be linked without the Library, or if the work is itself a library. The threshold for this to be true is not precisely defined by law.

If such an object file uses only numerical parameters, data structure layouts and accessors, and small macros and small inline functions (ten lines or less in length), then the use of the object file is unrestricted, regardless of whether it is legally a derivative work. (Executables containing this object code plus portions of the Library will still fall under Section 6.)

Otherwise, if the work is a derivative of the Library, you may distribute the object code for the work under the terms of Section 6. Any executables containing that work also fall under Section 6, whether or not they are linked directly with the Library itself.

6. As an exception to the Sections above, you may also combine or link a "work that uses the Library" with the Library to produce a work containing portions of the Library, and distribute that work under terms of your choice, provided that the terms permit modification of the work for the customer's own use and reverse engineering for debugging such modifications.

You must give prominent notice with each copy of the work that the Library is used in it and that the Library and its use are covered by this License. You must supply a copy of this License. If the work during execution displays copyright notices, you must include the copyright notice for the Library among them, as well as a reference directing the user to the copy of this License. Also, you must do one of these things:

- a) Accompany the work with the complete corresponding machine-readable source code for the Library including whatever changes were used in the work (which must be distributed under Sections 1 and 2 above); and, if the work is an executable linked with the Library, with the complete machine-readable "work that uses the Library", as object code and/or source code, so that the user can modify the Library and then relink to produce a modified executable containing the modified Library. (It is understood that the user who changes the contents of definitions files in the Library will not necessarily be able to recompile the application to use the modified definitions.)
- b) Use a suitable shared library mechanism for linking with the Library. A suitable mechanism is one that (1) uses at run time a copy of the library already present on the user's computer system, rather than copying library functions into the executable, and (2) will operate properly with a modified version of the library, if the user installs one, as long as the modified version is interface-compatible with the version that the work was made with.
- c) Accompany the work with a written offer, valid for at least three years, to give the same user the materials specified in Subsection 6a, above, for a charge no more than the cost of performing this distribution.
- d) If distribution of the work is made by offering access to copy from a designated place, offer equivalent access to copy the above specified materials from the same place.
- e) Verify that the user has already received a copy of these materials or that you have already sent this user a copy.

For an executable, the required form of the "work that uses the Library" must include any data and utility programs needed for reproducing the executable from it. However, as a special exception, the materials to be distributed need not include anything that is normally distributed (in either source or binary form) with the major components (compiler, kernel, and so on) of the operating system on which the executable runs, unless that component itself accompanies the executable.

It may happen that this requirement contradicts the license restrictions of other proprietary libraries that do not normally accompany the operating system. Such a contradiction means you cannot use both them and the Library together in an executable that you distribute.

7. You may place library facilities that are a work based on the Library side-by-side in a single library together with other library facilities not covered by this License, and distribute such a combined library, provided that the separate distribution of the work based on the Library and of the other library facilities is otherwise permitted, and provided that you do these two things:

a) Accompany the combined library with a copy of the same work based on the Library, uncombined with any other library facilities. This must be distributed under the terms of the Sections above.

b) Give prominent notice with the combined library of the fact that part of it is a work based on the Library, and explaining where to find the accompanying uncombined form of the same work.

8. You may not copy, modify, sublicense, link with, or distribute the Library except as expressly provided under this License. Any attempt otherwise to copy, modify, sublicense, link with, or distribute the Library is void, and will automatically terminate your rights under this License. However, parties who have received copies, or rights, from you under this License will not have their licenses terminated so long as such parties remain in full compliance.

9. You are not required to accept this License, since you have not signed it. However, nothing else grants you permission to modify or distribute the Library or its derivative works. These actions are prohibited by law if you do not accept this License. Therefore, by modifying or distributing the Library (or any work based on the Library), you indicate your acceptance of this License to do so, and all its terms and conditions for copying, distributing or modifying the Library or works based on it.

10. Each time you redistribute the Library (or any work based on the Library), the recipient automatically receives a license from the original licensor to copy, distribute, link with or modify the Library subject to these terms and conditions. You may not impose any further restrictions on the recipients' exercise of the rights granted herein. You are not responsible for enforcing compliance by third parties with this License.

11. If, as a consequence of a court judgment or allegation of patent infringement or for any other reason (not limited to patent issues), conditions are imposed on you (whether by court order, agreement or otherwise) that contradict the conditions of this License, they do not excuse you from the conditions of this License. If you cannot distribute so as to satisfy simultaneously your obligations under this License and any other pertinent obligations, then as a consequence you may not distribute the Library at all. For example, if a patent license would not permit royalty-free redistribution of the Library by all those who receive copies directly or indirectly through you, then the only way you could satisfy both it and this License would be to refrain entirely from distribution of the Library.

If any portion of this section is held invalid or unenforceable under any particular circumstance, the balance of the section is intended to apply, and the section as a whole is intended to apply in other circumstances.

It is not the purpose of this section to induce you to infringe any patents or other property right claims or to contest validity of any such claims; this section has the sole purpose of protecting the integrity of the free software distribution system which is implemented by public license practices. Many people have made generous contributions to the wide range of software distributed through that system in reliance on consistent application of that system; it is up to the author/donor to decide if he or she is willing to distribute software through any other system and a licensee cannot impose that choice.

This section is intended to make thoroughly clear what is believed to be a consequence of the rest of this License.

12. If the distribution and/or use of the Library is restricted in certain countries either by patents or by copyrighted interfaces, the original copyright holder who places the Library under this License may add an explicit geographical distribution limitation excluding those countries, so that distribution is permitted only in or among countries not thus excluded. In such case, this License incorporates the limitation as if written in the body of this License.

13. The Free Software Foundation may publish revised and/or new versions of the Lesser General Public License from time to time. Such new versions will be similar in spirit to the present version, but may differ in detail to address new problems or concerns.

Each version is given a distinguishing version number. If the Library specifies a version number of this License which applies to it and "any later version", you have the option of following the terms and conditions either of that version or of any later version published by the Free Software Foundation. If the Library does not specify a license version number, you may choose any version ever published by the Free Software Foundation.

14. If you wish to incorporate parts of the Library into other free programs whose distribution conditions are incompatible with these, write to the author to ask for permission. For software which is copyrighted by the Free Software Foundation, write to the Free Software Foundation; we sometimes make exceptions for this. Our decision will be guided by the two goals of preserving the free status of all derivatives of our free software and of promoting the sharing and reuse of software generally.

#### NO WARRANTY

15. BECAUSE THE LIBRARY IS LICENSED FREE OF CHARGE, THERE IS NO WARRANTY FOR THE LIBRARY, TO THE EXTENT PERMITTED BY APPLICABLE LAW. EXCEPT WHEN OTHERWISE STATED IN WRITING THE COPYRIGHT HOLDERS AND/OR OTHER PARTIES PROVIDE THE LIBRARY "AS IS" WITHOUT WARRANTY OF ANY KIND, EITHER EXPRESSED OR IMPLIED, INCLUDING, BUT NOT LIMITED TO, THE IMPLIED WARRANTIES OF MERCHANTABILITY AND FITNESS FOR A PARTICULAR PURPOSE. THE ENTIRE RISK AS TO THE QUALITY AND PERFORMANCE OF THE LIBRARY IS WITH YOU. SHOULD THE LIBRARY PROVE DEFECTIVE, YOU ASSUME THE COST OF ALL NECESSARY SERVICING, REPAIR OR CORRECTION.

16. IN NO EVENT UNLESS REQUIRED BY APPLICABLE LAW OR AGREED TO IN WRITING WILL ANY COPYRIGHT HOLDER, OR ANY OTHER PARTY WHO MAY MODIFY AND/OR REDISTRIBUTE THE LIBRARY AS PERMITTED ABOVE, BE LIABLE TO YOU FOR DAMAGES, INCLUDING ANY GENERAL, SPECIAL, INCIDENTAL OR CONSEQUENTIAL DAMAGES ARISING OUT OF THE USE OR INABILITY TO USE THE LIBRARY (INCLUDING BUT NOT LIMITED TO LOSS OF DATA OR DATA BEING RENDERED INACCURATE OR LOSSES SUSTAINED BY YOU OR THIRD PARTIES OR A FAILURE OF THE LIBRARY TO OPERATE WITH ANY OTHER SOFTWARE), EVEN IF SUCH HOLDER OR OTHER PARTY HAS BEEN ADVISED OF THE POSSIBILITY OF SUCH DAMAGES.



C. The Brady Network Card contains open source software licensed under the OpenSSL License.

Copyright (c) 1998-2007 The OpenSSL Project. All rights reserved.

Redistribution and use in source and binary forms, with or without modification, are permitted provided that the following conditions are met:

1. Redistributions of source code must retain the above copyright notice, this list of conditions and the following disclaimer. 2. Redistributions in binary form must reproduce the above copyright notice, this list of conditions and the following disclaimer in the documentation and/or other materials provided with the distribution. 3. All advertising materials mentioning features or use of this software must display the following acknowledgment: "This product includes software developed by the OpenSSL Project for use in the OpenSSL Toolkit. (<http://www.openssl.org/>)" 4. The names "OpenSSL Toolkit" and "OpenSSL Project" must not be used to endorse or promote products derived from this software without prior written permission. For written permission, please contact [openssl-core@openssl.org](mailto:openssl-core@openssl.org). 5. Products derived from this software may not be called "OpenSSL" nor may "OpenSSL" appear in their names without prior written permission of the OpenSSL Project. 6. Redistributions of any form whatsoever must retain the following acknowledgment: "This product includes software developed by the OpenSSL Project for use in the OpenSSL Toolkit (<http://www.openssl.org/>)"

THIS SOFTWARE IS PROVIDED BY THE OpenSSL PROJECT ``AS IS" AND ANY EXPRESSED OR IMPLIED WARRANTIES, INCLUDING, BUT NOT LIMITED TO, THE IMPLIED WARRANTIES OF MERCHANTABILITY AND FITNESS FOR A PARTICULAR PURPOSE ARE DISCLAIMED. IN NO EVENT SHALL THE OpenSSL PROJECT OR ITS CONTRIBUTORS BE LIABLE FOR ANY DIRECT, INDIRECT, INCIDENTAL, SPECIAL, EXEMPLARY, OR CONSEQUENTIAL DAMAGES (INCLUDING, BUT NOT LIMITED TO, PROCUREMENT OF SUBSTITUTE GOODS OR SERVICES; LOSS OF USE, DATA, OR PROFITS; OR BUSINESS INTERRUPTION HOWEVER CAUSED AND ON ANY THEORY OF LIABILITY, WHETHER IN CONTRACT, STRICT LIABILITY, OR TORT (INCLUDING NEGLIGENCE OR OTHERWISE) ARISING IN ANY WAY OUT OF THE USE OF THIS SOFTWARE, EVEN IF ADVISED OF THE POSSIBILITY OF SUCH DAMAGE.

D. This product includes cryptographic software written by Eric Young ([eay@cryptsoft.com](mailto:eay@cryptsoft.com)). This product includes software written by Tim Hudson ([tjh@cryptsoft.com](mailto:tjh@cryptsoft.com)).

Copyright (C) 1995-1998 Eric Young ([eay@cryptsoft.com](mailto:eay@cryptsoft.com))

All rights reserved. This package is an SSL implementation written by Eric Young ([eay@cryptsoft.com](mailto:eay@cryptsoft.com)).

The implementation was written so as to conform with Netscapes SSL. This library is free for commercial and non-commercial use as long as the following conditions are adhered to. The following conditions apply to all code found in this distribution, be it the RC4, RSA, lhash, DES, etc., code; not just the SSL code. The SSL documentation included with this distribution is covered by the same copyright terms except that the holder is Tim Hudson ([tjh@cryptsoft.com](mailto:tjh@cryptsoft.com)). Copyright remains Eric Young's, and as such any Copyright notices in the code are not to be removed. If this package is used in a product, Eric Young should be given attribution as the author of the parts of the library used. This can be in the form of a textual message at program startup or in documentation (online or textual) provided with the package.

Redistribution and use in source and binary forms, with or without modification, are permitted provided that the following conditions are met:

1. Redistributions of source code must retain the copyright notice, this list of conditions and the following disclaimer.

2. Redistributions in binary form must reproduce the above copyright notice, this list of conditions and the following disclaimer in the documentation and/or other materials provided with the distribution. 3. All advertising materials mentioning features or use of this software must display the following acknowledgement:

"This product includes cryptographic software written by Eric Young (eay@cryptsoft.com)" The word 'cryptographic' can be left out if the routines from the library being used are not cryptographic related :-). 4. If you include any Windows specific code (or a derivative thereof) from the apps directory (application code) you must include an acknowledgement: "This product includes software written by Tim Hudson (tjh@cryptsoft.com)"

THIS SOFTWARE IS PROVIDED BY ERIC YOUNG ``AS IS" AND ANY EXPRESS OR IMPLIED WARRANTIES, INCLUDING, BUT NOT LIMITED TO, THE IMPLIED WARRANTIES OF MERCHANTABILITY AND FITNESS FOR A PARTICULAR PURPOSE ARE DISCLAIMED. IN NO EVENT SHALL THE AUTHOR OR CONTRIBUTORS BE LIABLE FOR ANY DIRECT, INDIRECT, INCIDENTAL, SPECIAL, EXEMPLARY, OR CONSEQUENTIAL DAMAGES (INCLUDING, BUT NOT LIMITED TO, PROCUREMENT OF SUBSTITUTE GOODS OR SERVICES; LOSS OF USE, DATA, OR PROFITS; OR BUSINESS INTERRUPTION) HOWEVER CAUSED AND ON ANY THEORY OF LIABILITY, WHETHER IN CONTRACT, STRICT LIABILITY, OR TORT (INCLUDING NEGLIGENCE OR OTHERWISE) ARISING IN ANY WAY OUT OF THE USE OF THIS SOFTWARE, EVEN IF ADVISED OF THE POSSIBILITY OF SUCH DAMAGE.

The license and distribution terms for any publically available version or derivative of this code cannot be changed. i.e. this code cannot simply be copied and put under another distribution license [including the GNU Public License.]

E. The Brady Network Card contains open source software licensed under the dropbear license.

Dropbear contains a number of components from different sources, hence there are a few licenses and authors involved. All licenses are fairly non-restrictive. The majority of code is written by Matt Johnston, under the license below. Portions of the client-mode work are (c) 2004 Mihnea Stoenescu, under the same license:

Copyright (c) 2002-2008 Matt Johnston. Portions copyright (c) 2004 Mihnea Stoenescu. All rights reserved.

Permission is hereby granted, free of charge, to any person obtaining a copy of this software and associated documentation files (the "Software"), to deal in the Software without restriction, including without limitation the rights to use, copy, modify, merge, publish, distribute, sublicense, and/or sell copies of the Software, and to permit persons to whom the Software is furnished to do so, subject to the following conditions:

The above copyright notice and this permission notice shall be included in all copies or substantial portions of the Software.

THE SOFTWARE IS PROVIDED "AS IS", WITHOUT WARRANTY OF ANY KIND, EXPRESS OR IMPLIED, INCLUDING BUT NOT LIMITED TO THE WARRANTIES OF MERCHANTABILITY, FITNESS FOR A PARTICULAR PURPOSE AND NONINFRINGEMENT. IN NO EVENT SHALL THE AUTHORS OR COPYRIGHT HOLDERS BE LIABLE FOR ANY CLAIM, DAMAGES OR OTHER LIABILITY, WHETHER IN AN ACTION OF CONTRACT, TORT OR OTHERWISE, ARISING FROM, OUT OF OR IN CONNECTION WITH THE SOFTWARE OR THE USE OR OTHER DEALINGS IN THE SOFTWARE.

LibTomCrypt and LibTomMath are written by Tom St Denis, and are Public Domain.

PuTTY is copyright 1997-2003 Simon Tatham.



Portions copyright Robert de Bath, Joris van Rantwijk, Delian Delchev, Andreas Schultz, Jeroen Massar, Wez Furlong, Nicolas Barry, Justin Bradford, and CORE SDI S.A.

Permission is hereby granted, free of charge, to any person obtaining a copy of this software and associated documentation files (the "Software"), to deal in the Software without restriction, including without limitation the rights to use, copy, modify, merge, publish, distribute, sublicense, and/or sell copies of the Software, and to permit persons to whom the Software is furnished to do so, subject to the following conditions:

The above copyright notice and this permission notice shall be included in all copies or substantial portions of the Software.

THE SOFTWARE IS PROVIDED "AS IS", WITHOUT WARRANTY OF ANY KIND, EXPRESS OR IMPLIED, INCLUDING BUT NOT LIMITED TO THE WARRANTIES OF MERCHANTABILITY, FITNESS FOR A PARTICULAR PURPOSE AND NONINFRINGEMENT. IN NO EVENT SHALL THE COPYRIGHT HOLDERS BE LIABLE FOR ANY CLAIM, DAMAGES OR OTHER LIABILITY, WHETHER IN AN ACTION OF CONTRACT, TORT OR OTHERWISE, ARISING FROM, OUT OF OR IN CONNECTION WITH THE SOFTWARE OR THE USE OR OTHER DEALINGS IN THE SOFTWARE.

F. The Brady Network Card contains open source software licensed under the Apache License Version 2.0.

The majority of the source code in the mDNSResponder project is licensed under the terms of the Apache License, Version 2.0, available from: <<http://www.apache.org/licenses/LICENSE-2.0>>

Apache License

Version 2.0, January 2004

<http://www.apache.org/licenses/>

## TERMS AND CONDITIONS FOR USE, REPRODUCTION, AND DISTRIBUTION

### 1. Definitions.

"License" shall mean the terms and conditions for use, reproduction, and distribution as defined by Sections 1 through 9 of this document.

"Licensor" shall mean the copyright owner or entity authorized by the copyright owner that is granting the License.

"Legal Entity" shall mean the union of the acting entity and all other entities that control, are controlled by, or are under common control with that entity. For the purposes of this definition, "control" means (i) the power, direct or indirect, to cause the direction or management of such entity, whether by contract or otherwise, or (ii) ownership of fifty percent (50%) or more of the outstanding shares, or (iii) beneficial ownership of such entity.

"You" (or "Your") shall mean an individual or Legal Entity exercising permissions granted by this License.

"Source" form shall mean the preferred form for making modifications, including but not limited to software source code, documentation source, and configuration files.

"Object" form shall mean any form resulting from mechanical transformation or translation of a Source form, including but not limited to compiled object code, generated documentation, and conversions to other media types.

"Work" shall mean the work of authorship, whether in Source or Object form, made available under the License, as indicated by a copyright notice that is included in or attached to the work (an example is provided in the Appendix below).

"Derivative Works" shall mean any work, whether in Source or Object form, that is based on (or derived from) the Work and for which the editorial revisions, annotations, elaborations, or other modifications represent, as a whole, an original work of authorship. For the purposes of this License, Derivative Works shall not include works that remain separable from, or merely link (or bind by name) to the interfaces of, the Work and Derivative Works thereof.

"Contribution" shall mean any work of authorship, including the original version of the Work and any modifications or additions to that Work or Derivative Works thereof, that is intentionally submitted to Licensor for inclusion in the Work by the copyright owner or by an individual or Legal Entity authorized to submit on behalf of the copyright owner. For the purposes of this definition, "submitted" means any form of electronic, verbal, or written communication sent to the Licensor or its representatives, including but not limited to communication on electronic mailing lists, source code control systems, and issue tracking systems that are managed by, or on behalf of, the Licensor for the purpose of discussing and improving the Work, but excluding communication that is conspicuously marked or otherwise designated in writing by the copyright owner as "Not a Contribution."

"Contributor" shall mean Licensor and any individual or Legal Entity on behalf of whom a Contribution has been received by Licensor and subsequently incorporated within the Work.

2. Grant of Copyright License. Subject to the terms and conditions of this License, each Contributor hereby grants to You a perpetual, worldwide, non-exclusive, no-charge, royalty-free, irrevocable copyright license to reproduce, prepare Derivative Works of, publicly display, publicly perform, sublicense, and distribute the Work and such Derivative Works in Source or Object form.

3. Grant of Patent License. Subject to the terms and conditions of this License, each Contributor hereby grants to You a perpetual, worldwide, non-exclusive, no-charge, royalty-free, irrevocable (except as stated in this section) patent license to make, have made, use, offer to sell, sell, import, and otherwise transfer the Work, where such license applies only to those patent claims licensable by such Contributor that are necessarily infringed by their Contribution(s) alone or by combination of their Contribution(s) with the Work to which such Contribution(s) was submitted. If You institute patent litigation against any entity (including a cross-claim or counterclaim in a lawsuit) alleging that the Work or a Contribution incorporated within the Work constitutes direct or contributory patent infringement, then any patent licenses granted to You under this License for that Work shall terminate as of the date such litigation is filed.

4. Redistribution. You may reproduce and distribute copies of the Work or Derivative Works thereof in any medium, with or without modifications, and in Source or Object form, provided that You meet the following conditions:

You must give any other recipients of the Work or Derivative Works a copy of this License; and

You must cause any modified files to carry prominent notices stating that You changed the files; and

You must retain, in the Source form of any Derivative Works that You distribute, all copyright, patent, trademark, and attribution notices from the Source form of the Work, excluding those notices that do not pertain to any part of the Derivative Works; and

If the Work includes a "NOTICE" text file as part of its distribution, then any Derivative Works that You distribute must include a readable copy of the attribution notices contained within such NOTICE file, excluding those notices that do not pertain to any part of the Derivative Works, in at least one of the following places: within a NOTICE text file distributed as part of the Derivative Works; within the Source form or documentation, if provided along with the Derivative Works; or, within a display generated by the Derivative Works, if and wherever such third-party notices normally appear. The contents of the NOTICE file are for informational purposes only and do not modify the License. You may add Your own attribution notices within Derivative Works that You distribute, alongside or as an addendum to the NOTICE text from the Work, provided that such additional attribution notices cannot be construed as modifying the License. You may add Your own copyright statement to Your modifications and may provide additional or different license terms and conditions for use, reproduction, or distribution of Your modifications, or for any such Derivative Works as a whole, provided Your use, reproduction, and distribution of the Work otherwise complies with the conditions stated in this License.

5. Submission of Contributions. Unless You explicitly state otherwise, any Contribution intentionally submitted for inclusion in the Work by You to the Licensor shall be under the terms and conditions of this License, without any additional terms or conditions. Notwithstanding the above, nothing herein shall supersede or modify the terms of any separate license agreement you may have executed with Licensor regarding such Contributions.

6. Trademarks. This License does not grant permission to use the trade names, trademarks, service marks, or product names of the Licensor, except as required for reasonable and customary use in describing the origin of the Work and reproducing the content of the NOTICE file.

7. Disclaimer of Warranty. Unless required by applicable law or agreed to in writing, Licensor provides the Work (and each Contributor provides its Contributions) on an "AS IS" BASIS, WITHOUT WARRANTIES OR CONDITIONS OF ANY KIND, either express or implied, including, without limitation, any warranties or conditions of TITLE, NON-INFRINGEMENT, MERCHANTABILITY, or FITNESS FOR A PARTICULAR PURPOSE. You are solely responsible for determining the appropriateness of using or redistributing the Work and assume any risks associated with Your exercise of permissions under this License.

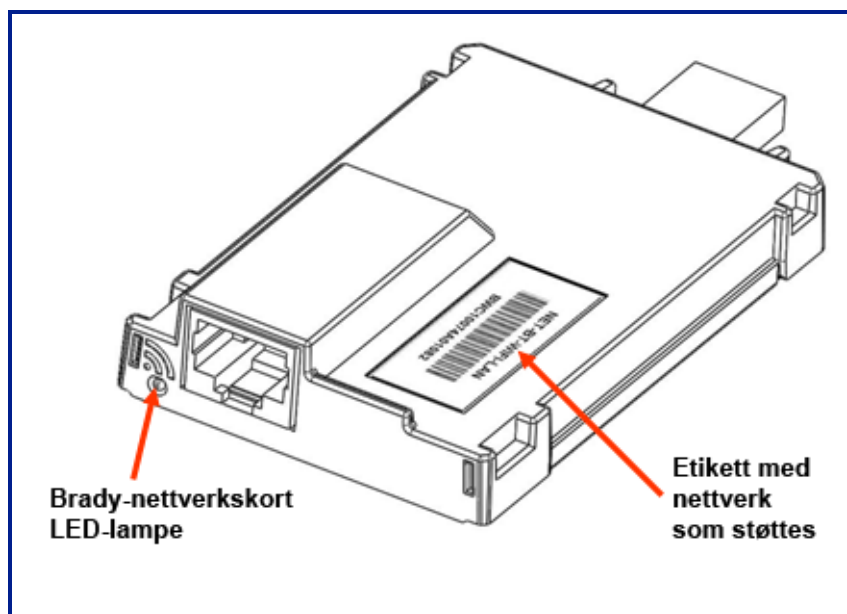
8. Limitation of Liability. In no event and under no legal theory, whether in tort (including negligence), contract, or otherwise, unless required by applicable law (such as deliberate and grossly negligent acts) or agreed to in writing, shall any Contributor be liable to You for damages, including any direct, indirect, special, incidental, or consequential damages of any character arising as a result of this License or out of the use or inability to use the Work (including but not limited to damages for loss of goodwill, work stoppage, computer failure or malfunction, or any and all other commercial damages or losses), even if such Contributor has been advised of the possibility of such damages.

9. Accepting Warranty or Additional Liability. While redistributing the Work or Derivative Works thereof, You may choose to offer, and charge a fee for, acceptance of support, warranty, indemnity, or other liability obligations and/or rights consistent with this License. However, in accepting such obligations, You may act only on Your own behalf and on Your sole responsibility, not on behalf of any other Contributor, and only if You agree to indemnify, defend, and hold each Contributor harmless for any liability incurred by, or claims asserted against, such Contributor by reason of your accepting any such warranty or additional liability.

To accommodate license compatibility with the widest possible range of client code licenses, the shared library code, which is linked at runtime into the same address space as the client using it, is licensed under the terms of the "Three-Clause BSD License". The Linux Name Service Switch code, contributed by National ICT Australia Ltd (NICTA) is licensed under the terms of the NICTA Public Software Licence (which is substantially similar to the "Three-Clause BSD License", with some additional language pertaining to Australian law).



## Brady-nettverkskort



### Brady-nettverkskort LED-lampe

Endrede farger på LED-lampen på Brady-nettverkskortet forteller følgende:

Farge	Status
Fast grønt	Kortet fungerer normalt, status er OK.
Blinker oransje	Fastvaren er ødelagt og må oppgraderes. Bruk konfigurasjonsverktøy for Brady-nettverkskortet for å oppgradere fastvaren. (Se <a href="#">side 79</a> for å finne informasjon om å laste ned ny fastvare.)
Blinker grønt	Fastvareoppgradering pågår.
Fast rødt	Kortet mislyktes. Ingen kommunikasjon mellom Brady-nettverkskortet og skriveren. Kontakt systemadministratoren.
Blinker rødt	En feil ble oppdaget i den pågående operasjonen av Brady-nettverkskortet. Kontroller den pågående operasjonen.

## Nettverk som støttes

Navnet på strekkodeetiketten på nettverkskortet viser hvilke nettverk som det bestemte kortet støtter.

Navn	Nettverk som støttes
NET-BT-WIFI-LAN	Bluetooth, WiFi og Ethernet
NET-WIFI	KUN WiFi og Bluetooth
NET-BT	KUN Bluetooth
NET-LAN	KUN Ethernet

## Installering av Brady-nettverkskortet

Dersom Brady-skriveren har et Brady-nettverkskort (WiFi eller Ethernet), kan skriveren konfigureres til å kjøre som en lokal skriver (koblet til PC-en med en USB-kabel) eller som en nettverksskriver (delt) via Ethernet eller WiFi. Brady-nettverkskortet må konfigureres for å gjenkjenne og jobbe med dine nettverk for å gjøre skriveren til en nettverksskriver. CD-en med Brady-skriverdriverne som leveres sammen med skriveren, inneholder ikke bare installeringsveivisere til skriverdriverne, men også konfigurering av Brady-nettverkskortet. Skriverdriverne og driverne til Brady-nettverkskortet kan også lastes ned fra Bradys nettsted på [www.bradyid.com](http://www.bradyid.com).

Installering av nettverkskortet og konfigurasjonsveiviseren identifiserer seks forskjellige installeringsalternativer. Disse er:

- Førstegangsinstallering for WiFi-utskrift
- Førstegangsinstallering for Ethernet-utskrift
- Bluetooth-utskrift for mobiltelefoner
- Installering for flere PC-er
- Installering for kun USB-driveren
- Førstegangsinstallering for ad hoc-utskrift

## Førstegangsinstallering for WiFi-utskrift

Bruk denne installeringsprosessen:

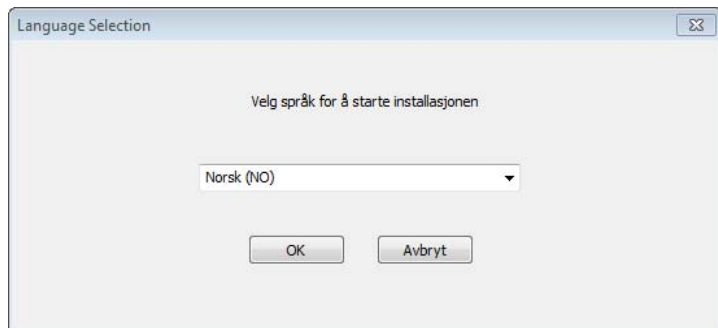
- ☒ **Dersom du nettopp har kjøpt skriver, og den settes opp for første gang.**
- ☒ **Dersom du har tenkt å sende skriftsjobber til skriveren fra en PC med et WiFi-nettverk.**

Gjør følgende for å konfigurere Brady-nettverkskortet for WiFi og installere skriverdriveren for Brady-skriveren.

1. Sørg for at skriveren og PC-en **IKKE** er koblet til en USB-kabel.
2. Sett CD-en med Brady-skriverdriveren, inn i CD-stasjonen på datamaskinen.

Installeringsveiviseren starter automatisk.

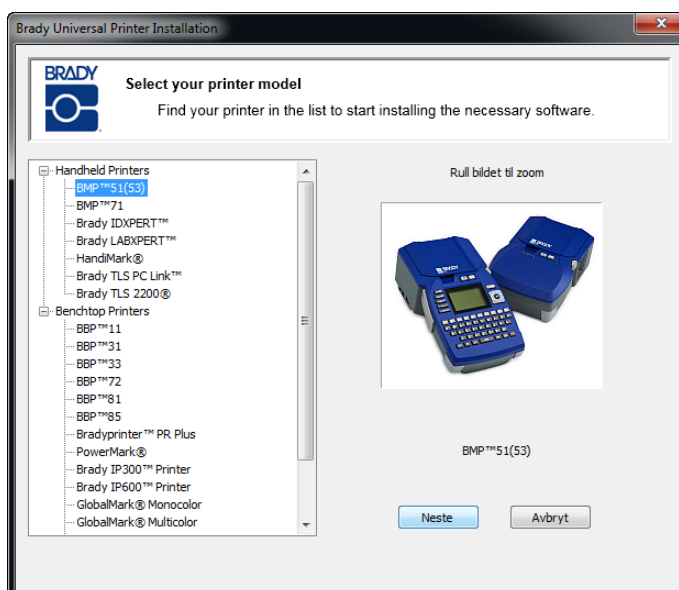
3. Slå på skriveren.
4. På rullegardinlisten velger du språk og klikker på OK.





5. Klikk på skrivermodellen som skal installeres, og klikk deretter på Neste.

Windows-installasjonsprogrammet installerer konfigurasjonsverktøyet for Brady-nettverkshortet.



6. **KOBLE FRA** skriveren og PC-en nå dersom disse fremdeles er koblet til en USB-kabel.

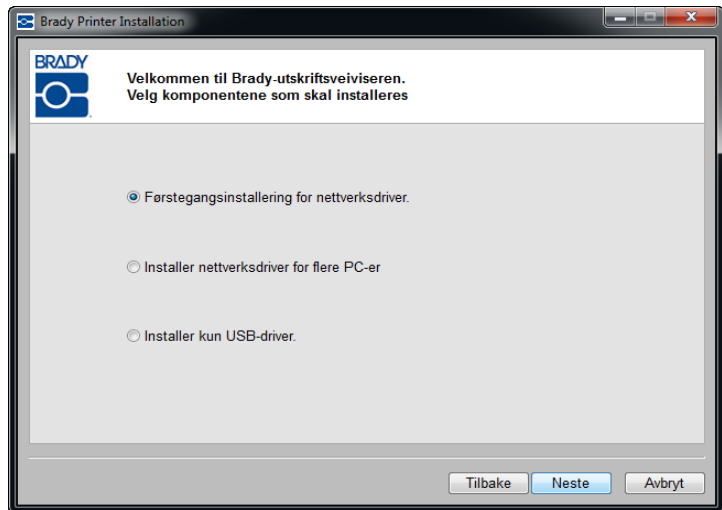


7. I popup-vinduet "installer enhetsprogramvare" klikker du på **Installer** for å installere skriverdriverne.

## 6 | Installering av Brady-nettverkskortet

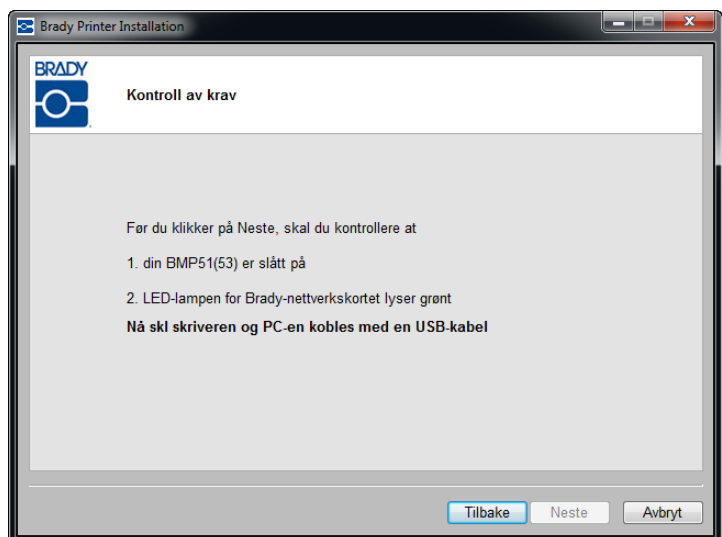
### Førstegangsinstallering for WiFi-utskrift

8. Klikk på *Førstegangsinstallering for nettverksdriver* (valgt som standard), og klikk deretter på Neste.



Kontroller at skriveren er slått på, og at LED-lampen på Brady-nettverkskortet lyser fast grønt.

9. Koble skriveren til PC-en med en USB-kabel.



Hvis du installerer skriverdriverne på Windows XP, vises *Veiviser for funnet maskinvare*. Hvis denne vises, fortsetter du med trinn 11. Hvis ikke, går du til trinn 14 på [side 8](#).

10. Klikk på radioknappen *Ja, nå og hver gang jeg kobler til en enhet*. Klikk deretter på Neste.




11. Klikk på radioknappen *Installer programvare automatisk (Anbefales)*. Klikk deretter på Neste.



## 8 | Installering av Brady-nettverkskortet

### Førstegangsinstallering for WiFi-utskrift

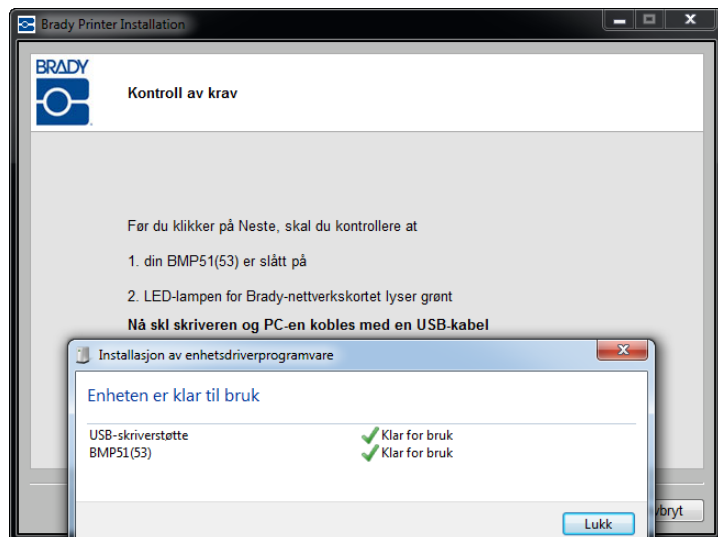
Installeringen fortsetter.

12. Klikk på Fullfør  for å lukke veiviseren når du er ferdig.
13. Klikk på Neste.



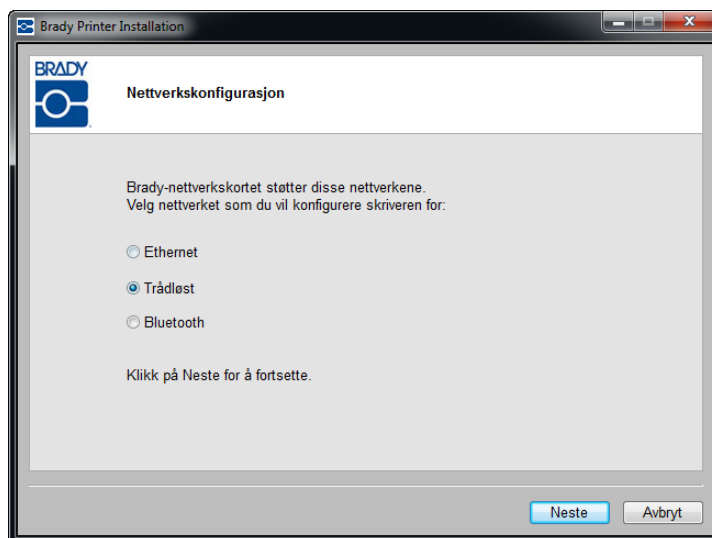
14. En melding vises om at enheten er klar til bruk. Klikk på Lukk for å fjerne denne meldingen.
15. I vinduet Kontroll av krav klikker du på Neste.

Tilkoblingen installeres og verifiseres



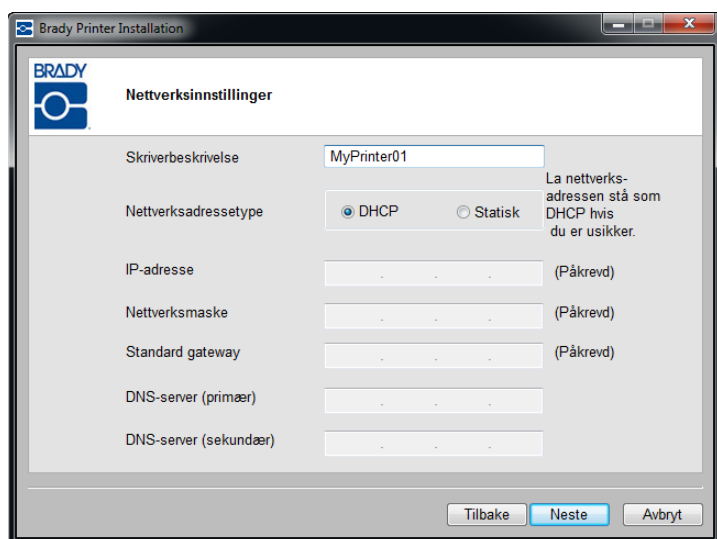
Nettverkene som støttes av Brady-nettverkskortet, vises. Slik aktiveres WiFi:

16. Klikk på Trådløst og deretter på Neste.



17. Angi et navn / en beskrivelse som er lett å identifisere for denne nettverkstilkoblingen i feltet *Skriverbeskrivelse*. Hvilke som helst alfanumeriske tegn kan brukes.

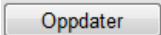
Standard DHCP-protokoll anbefales i feltet *Nettverksadressetype*. Hvis du bruker DHCP, går du til trinn 22 på [side 10](#).



### Bruke statisk nettverksadresse

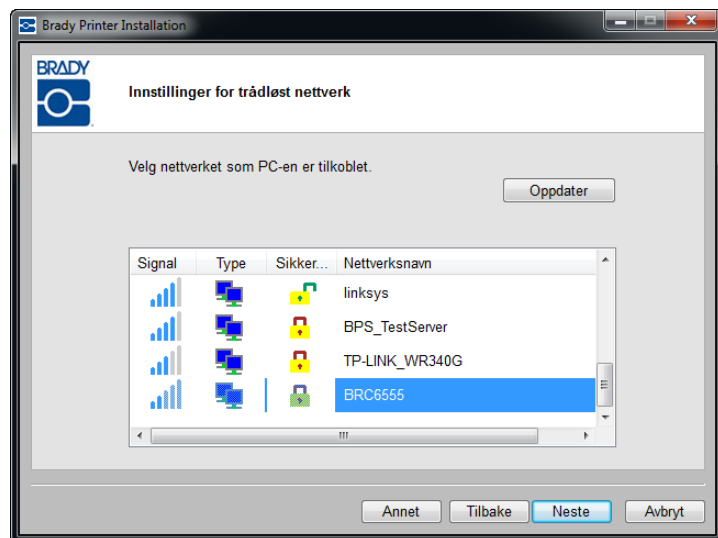
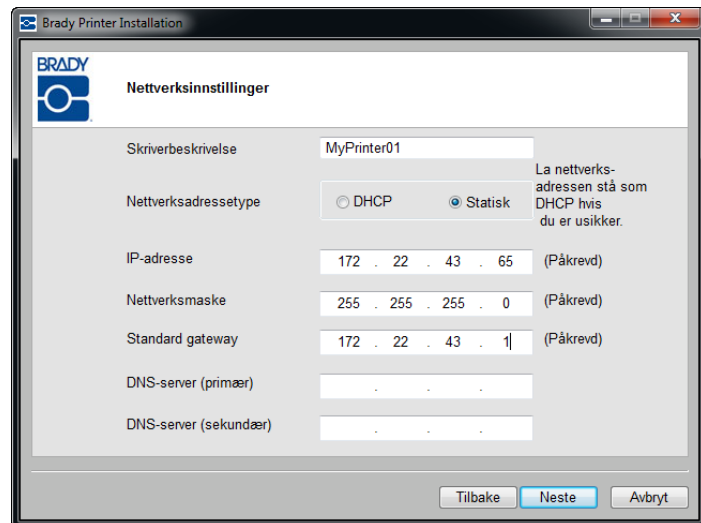
Feltene IP-adresse, Nettverksmaske og Standard gateway må fylles ut hvis du vil bruke statisk nettverksadresse. Denne informasjonen får du fra nettverksadministratoren på stedet. Slik bruker du statisk adresse:

18. Klikk på radioknappen *Statisk*. Dette åpner de nødvendige feltene for angivelse av adresser.
  19. Klikk på feltet *IP-adresse* og angi ønsket IP-adresse. Markøren går automatisk til de forskjellige delene i IP-adressefeltet.
  20. Klikk på feltet *Nettverksmaske* og angi nettverksmasken.
  21. Klikk på feltet *Standard gateway* og angi gateway-adressen.
  22. Klikk på Neste når du er ferdig.
23. Velg nettverket som PC-en for tiden er tilkoblet.

**Merk:** Hvis du ikke sett nettverket på listen, klikker du på Oppdater-knappen .

Hvis du fremdeles ikke ser nettverket på listen, kan du velge Annet for å spesifisere et nettverk manuelt.

Hvis du vil navngi et annet nettverk, går du til trinn 30 på [side 14](#).



Sørg for at du har WiFi-nettverksnavnet og tilgangsnøkkelen til PC-en (dersom nettverket er passordbeskyttet). Når denne informasjonen er hentet:

24. Klikk på Neste.

Brady-nettverkskortet kan konfigureres for tilkobling til både et personlig nettverk og et virksomhetsnettverk.

Et personlig nettverk, også kjent som WPA-PSK, brukes som regel i private boliger og på små kontorer. Nettverket er beskyttet av en tilgangsnøkkel som angis av brukeren.

Et virksomhetsnettverk, også kjent som WPA-802.1X (eller bare WPA), brukes av større organisasjoner og krever en RADIUS-server. Serveren genererer tilgangsnøkkelen.

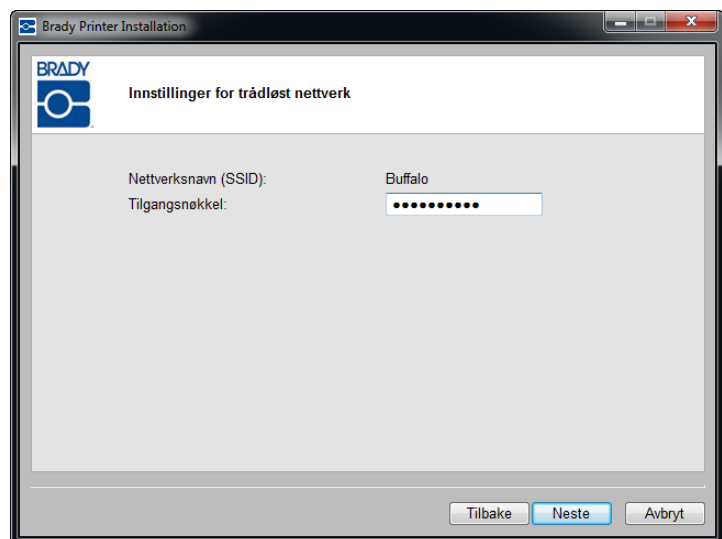
**Merk:** Installasjonsprogrammet oppdager automatisk om det valgte nettverket er et personlig nettverk eller et virksomhetsnettverk.

Hvis det trådløse nettverket du har valgt på listen, er et personlig nettverk:

**25.** Angi tilgangsnøkkelen til det valgte nettverket.

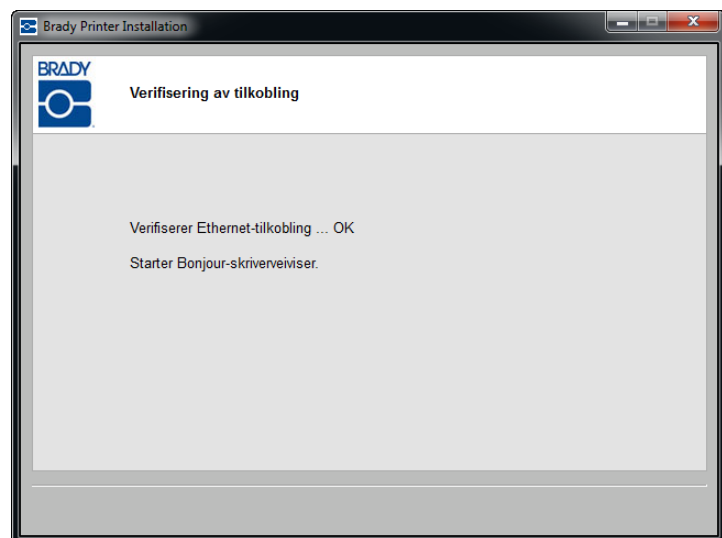
Snakk med nettverksadministratoren dersom passordet eller sikkerhetstypen ikke er kjent.

**26.** Klikk på Neste.



Tilkoblingen verifiseres.

Hvis du valgte Statisk i trinn 18, er nettverksskriveren allerede etablert og tilordnet IP-adressen du anga i 19. Skriveren installeres. Fortsett til trinn 48 på [side 20](#). Hvis ikke, går du til Bonjour Print Services som starter på [side 17](#).

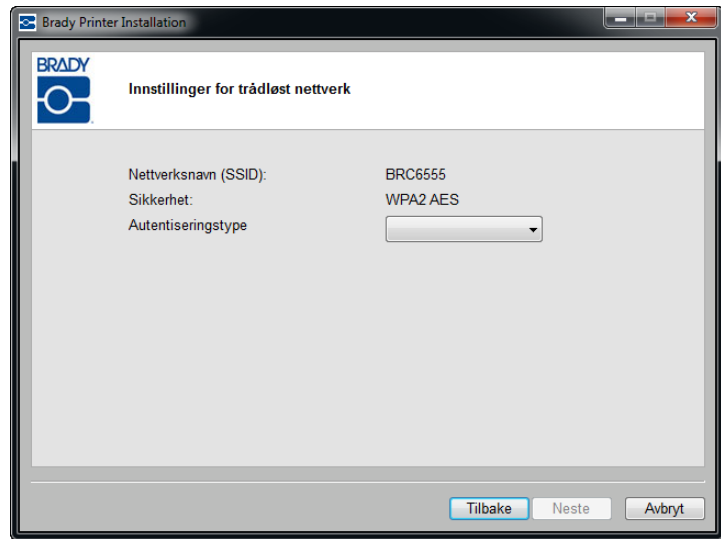


## 12 | Installering av Brady-nettverkskortet

### Førstegangsinstallering for WiFi-utskrift

Hvis det trådløse nettverket du har valgt på listen, er et virksomhetsnettverk:

27. Klikk på pil ned og velg *Autentiseringstype*. (Hvis du ikke vet autentiseringstypen, kan du høre med nettverksadministratoren.)

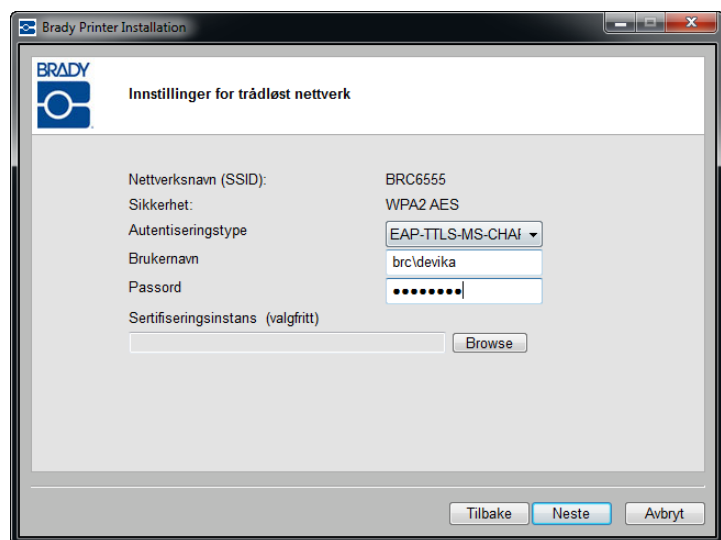


28. Angi brukernavn og passord om aktuelt. Snakk med nettverksadministratoren for å finne ut om du allerede har fått et brukernavn.

---

**Merk:** Avhengig av valgt autentiseringstype må du kanskje oppgi brukernavn, passord og sertifikater. Se autentiseringstabellen på [side 14](#) for mer informasjon.

---

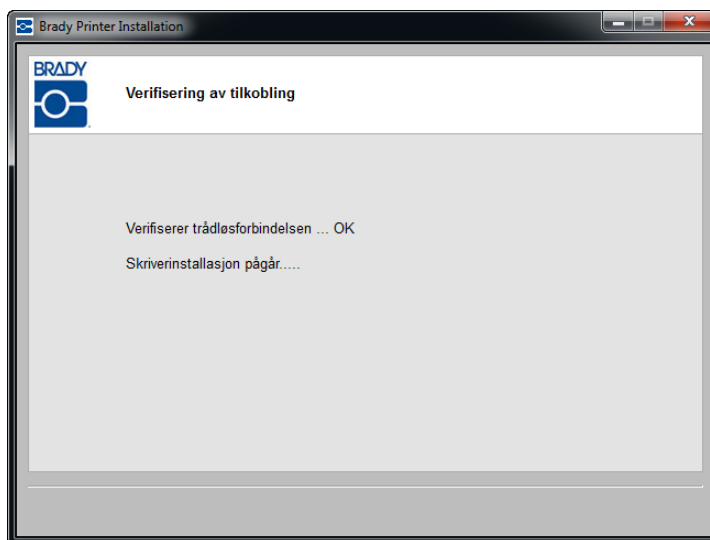


29. Klikk på Neste når du er ferdig.



Den trådløse tilkoblingen verifiseres.

Hvis du valgte Statisk i trinn 18 eller hvis PC-en og skriveren ikke er på samme delnettverk, er nettverksskriveren allerede etablert og tilordnet enten IP-adressen du anga, eller DHCP IP-adressen. Skriveren installeres. Fortsett til trinn 48 på [side 20](#).



Hvis ikke, går du til Bonjour Print Services som starter på [side 17](#).

## Autentiseringsmetoder og -typer

Installasjonsprogrammet for Brady-nettverkskortet støtter ulike autentiseringsmetoder og -typer. De følgende tabellene indikerer 802.1X-autentiseringsmetodene som støttes for WPA- og WPA2-virksomhetsnettverk, og de påkrevde feltene for autentiseringstypen som brukes. Henvis til disse tabellene når du skal velge autentiseringstype.

Authentication Methods Supported	EAP-TLS	EAP-TTLS	PEAP v0
Certificate Formats Supported	<b>PKCS1</b>	<b>PKCS12</b>	
	.DER .PEM .CER .CRT .KEY	.PFX	

**Tabell 1. Autentiseringsmetoder**

Authentication Type	Username	Password/ Private key Password	CA Certificate	Client Certificate	Client Key
EAP-PEAP-MSCHAPV2	Mandatory	Mandatory	Optional	Not Required	Not Required
EAP-TTLS-MSCHAPV2	Mandatory	Mandatory	Optional	Not Required	Not Required
EAP-TLS	Mandatory	Not Required	Optional	Mandatory	Mandatory
EAP-TLS	Mandatory	Required if Client Cert is in .PFX format	Optional	Mandatory	Not Required

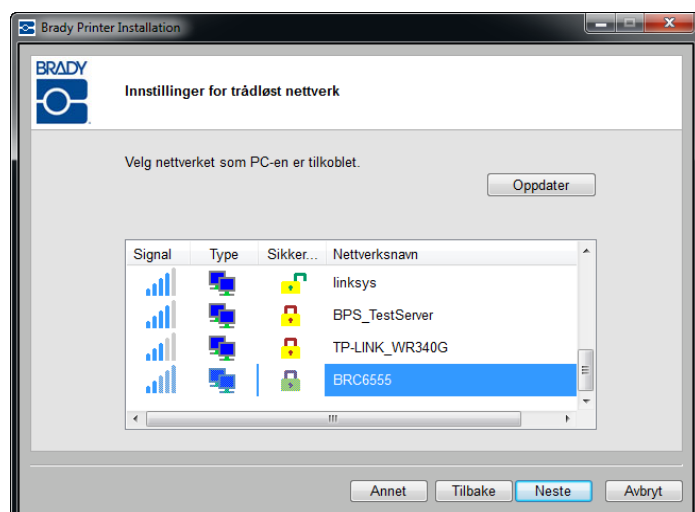
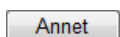
**Tabell 2. Autentiseringstype**

## Definere andre nettverk

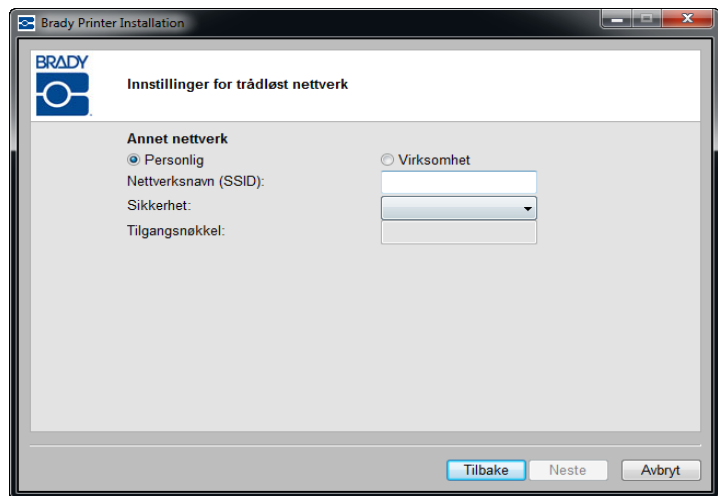
Når du skal definere andre nettverk, må du vite nettverksnavnet (SSID), sikkerheten som brukes, og om aktuelt tilgangsnøkkelen. Denne informasjonen får du fra nettverksadministratoren på stedet.

Slik navngir du et annet nettverk:

30. På skjermen Innstillinger for trådløst nettverk klikker du på Annet-knappen



31. På skjermen for *Annet* nettverk klikker du på radioknappen – Personlig eller Virksomhet – som best beskriver dette nettverket.

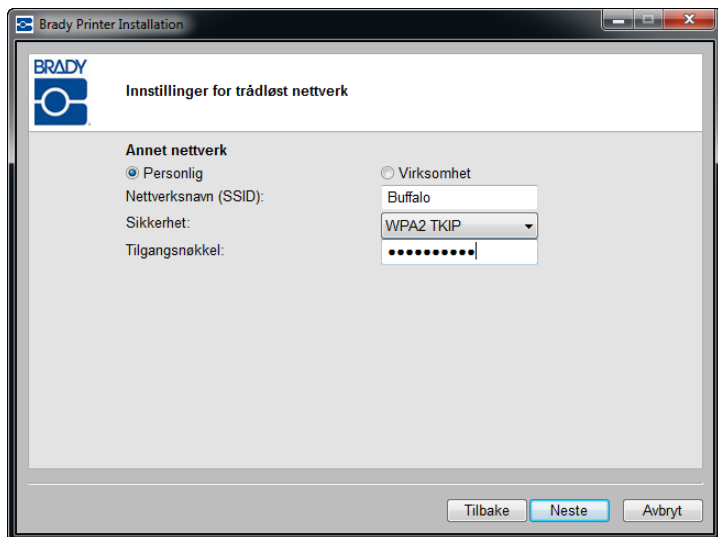


### Personlig nettverk

32. Hvis du klikker på Personlig nettverk, angir du nettverksnavnet (SSID)
33. I feltet Sikkerhet klikker du på pil ned og velger sikkerhetstypen.

Avhengig av valgt sikkerhet må du kanskje oppgi en tilgangsnøkkel. Se tabellene for autentiseringsmetoder og -typer på [side 14](#) for mer informasjon.

**Merk:** Du behøver ikke oppgi en autentiseringstype for personlige nettverk.



## 16 | Installering av Brady-nettverkskortet

### Førstegangsinstallering for WiFi-utskrift

#### Virksomhetsnettverk

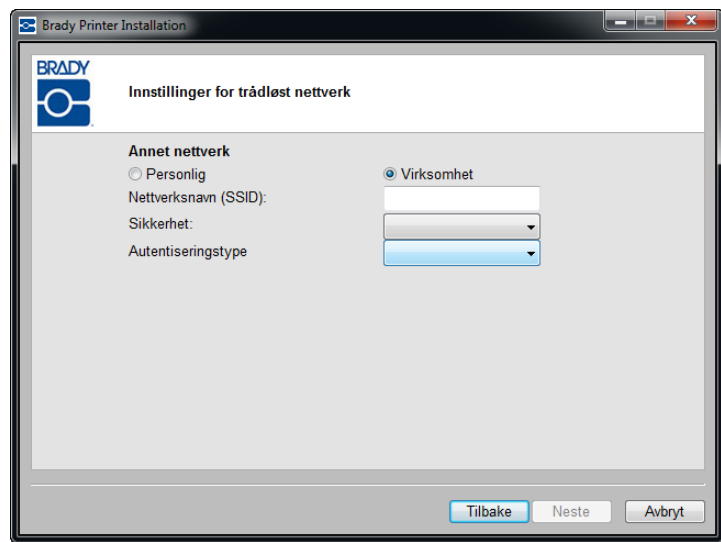
Hvis du klikker på Virksomhetsnettverk:

34. Angi nettverksnavnet (SSID)
35. I feltet Sikkerhet klikker du på pil ned og velger sikkerhetstypen.

---

**Merk:** Hvis du fant nettverket på listen, angis feltene Nettverksnavn og Sikkerhet automatisk.

---

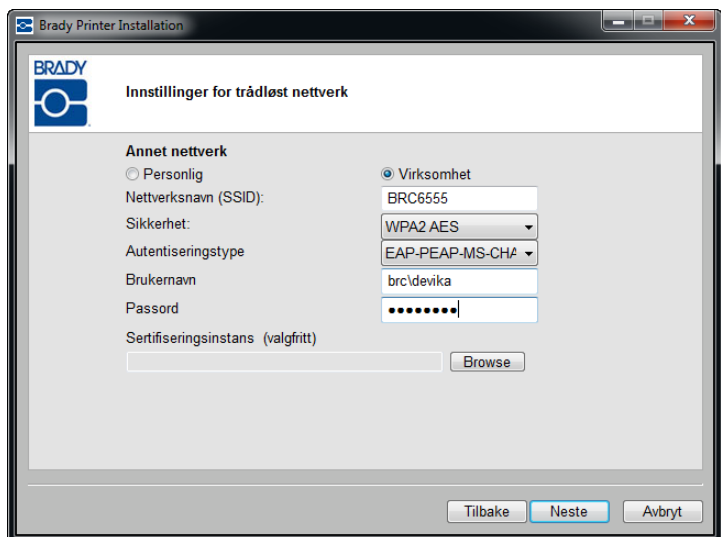


36. Klikk på pil ned og velg *Autentiseringstype*. (Hvis du ikke vet autentiseringstypen, kan du høre med nettverksadministratoren.)
37. Angi brukernavn og passord om aktuelt. Snakk med nettverksadministratoren for å finne ut om du allerede har fått et brukernavn.

---

**Merk:** Avhengig av valgt autentiseringstype må du kanskje oppgi brukernavn, passord og sertifikater. Se autentiseringstabellen på [side 14](#) for mer informasjon.

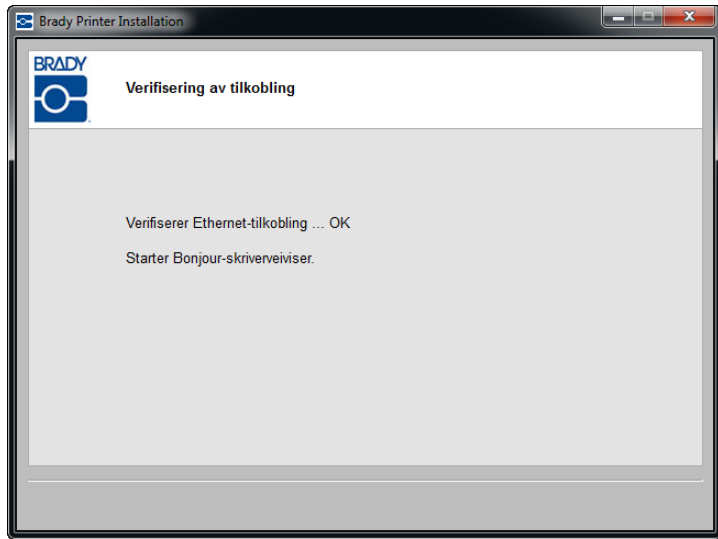
---



38. Klikk på Neste når du er ferdig.

Den trådløse tilkoblingen verifiseres.

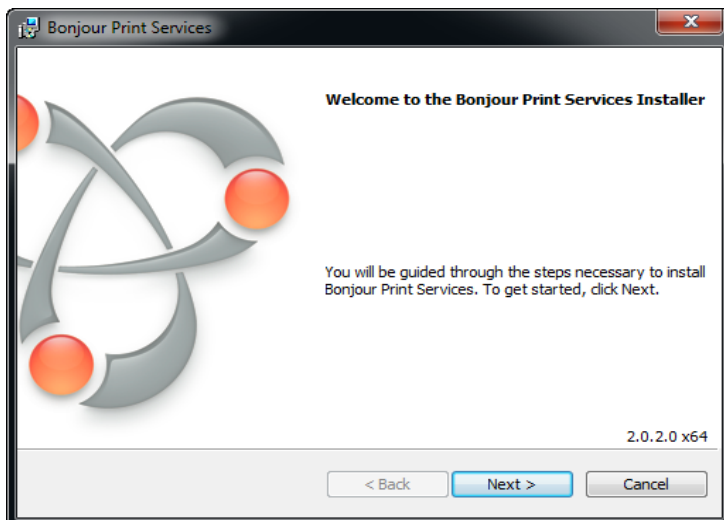
Hvis du valgte Statisk i trinn 18 eller hvis PC-en og skriveren ikke er på samme delnettverk, er nettverksskriveren allerede etablert og tilordnet enten IP-adressen du anga, eller DHCP IP-adressen. Skriveren installeres. Fortsett til trinn 48 på [side 20](#).



### Bonjour Print Services

Hvis du brukte standard DHCP-innstilling med PC-en og skriveren på samme delnettverk, etableres tilkoblingen, og Bonjour-veiviseren starter. Bonjour-programmet skal opprette og overvåke nettverksskrivere. Skriverveiviseren på Bonjour oppretter Brady-skriveren som en nettverksskriver.

**39.** Klikk på Neste.



## 18 | Installering av Brady-nettverkskortet

### Førstegangsinstallering for WiFi-utskrift

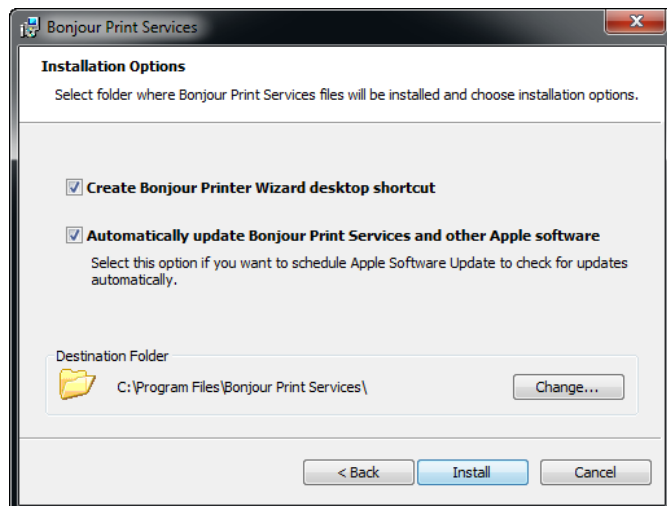
Apples lisensavtale som gjelder sluttbrukere, vises.

40. Klikk på Jeg godtar betingelsene i lisensavtalen etter at den er lest, og klikk deretter på Neste for å fortsette.
41. Klikk igjen på Neste på skjermen Les informasjon.

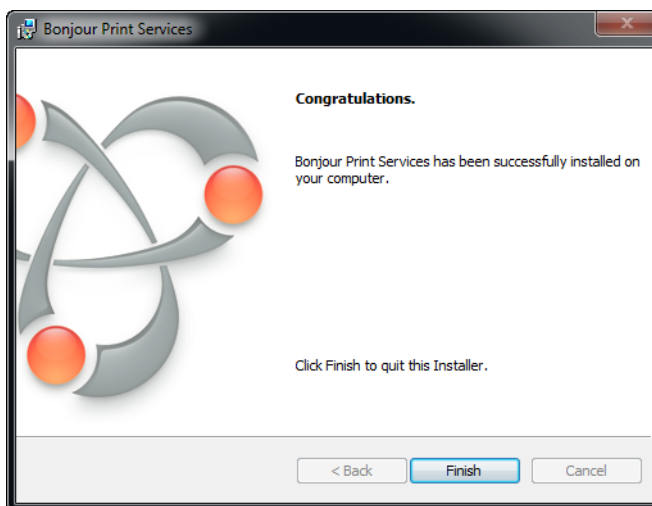


Velg ønskede alternativer for Bonjour-veiviseren og hvor du vil installere programvaren Bonjour Print Services.

42. Hvis du vil endre standard lagringsplass, klikker du på Endre og følger den vanlige Windows-fremgangsmåten for å finne en annen mappe.
43. Klikk på Installer når du er klar.



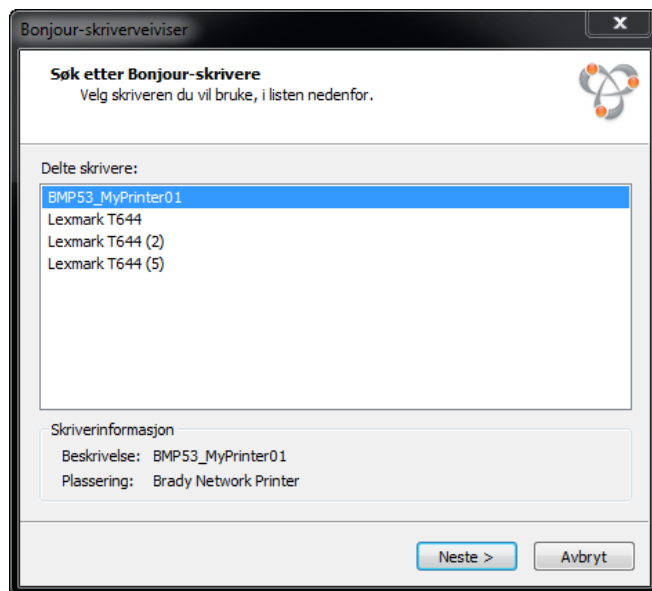
44. Når Bonjour Print Services er installert, klikker du på Fullfør.



45. Klikk på det tildelte nettverksskrivernavnet.

Navnet eller beskrivelsen som ble tildelt i trinn 17, vises nederst til venstre på skjermen for å gjøre det lettere å identifisere.

46. Klikk på Neste.



47. Klikk på Fullført etter at skriverveiviseren på Bonjour er ferdig.



Installering av Brady-skriveren er fullført.

48. Klikk på Fullført for å avslutte veiviseren.





## Førstegangsinstallering for Ethernet-utskrift

Bruk denne installeringsprosessen:

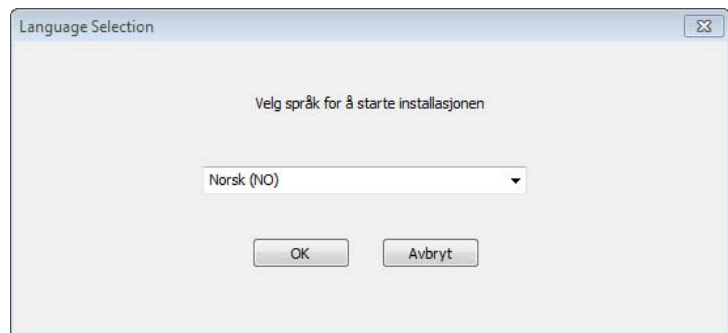
- ☒ **Dersom du nettopp har kjøpt skriver, og den settes opp for første gang.**
- ☒ **Dersom du har tenkt å sende utskriftjobber til skriveren fra en PC med et WiFi-nettverk.**

Brady-nettverkskortet er konfigurert for å støtte enten Ethernet- eller WiFi-tilkobling. Begge tilkoblingene kan ikke være aktive samtidig. Slik aktiveres Ethernet-tilkoblingen:

1. Sørg for at skriveren og PC-en **IKKE** er koblet til en USB-kabel.
2. Sett CD-en med Brady-skriverdriverne, inn i CD-stasjonen på datamaskinen.

Installeringsveiviseren starter automatisk.

3. Slå på skriveren.
4. På rullegardinlisten velger du språk og klikker på OK.

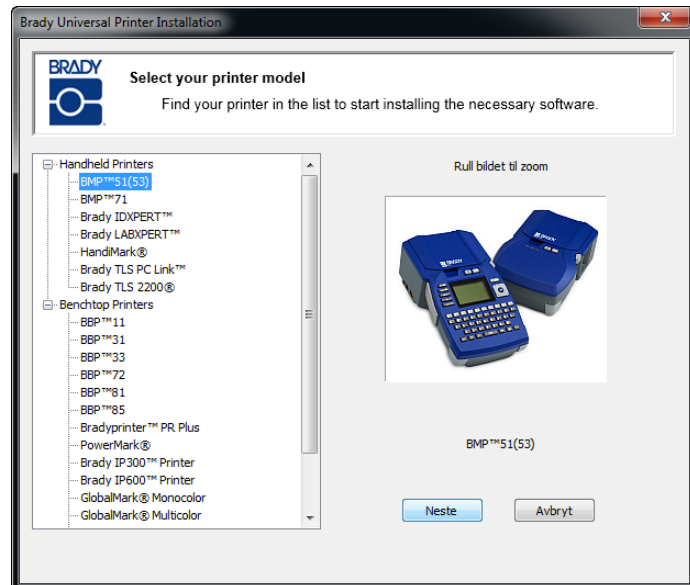


## 22 | Installering av Brady-nettverkskortet

### Førstegangsinstallering for Ethernet-utskrift

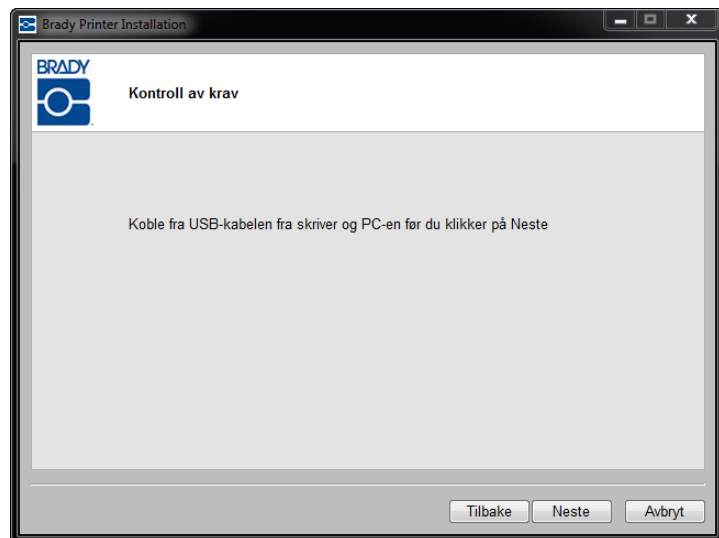
5. Klikk på skrivermodellen som skal installeres, og klikk deretter på Neste.

Windows-installasjonsprogrammet installerer konfigurasjonsverktøyet for Brady-nettverkskortet.

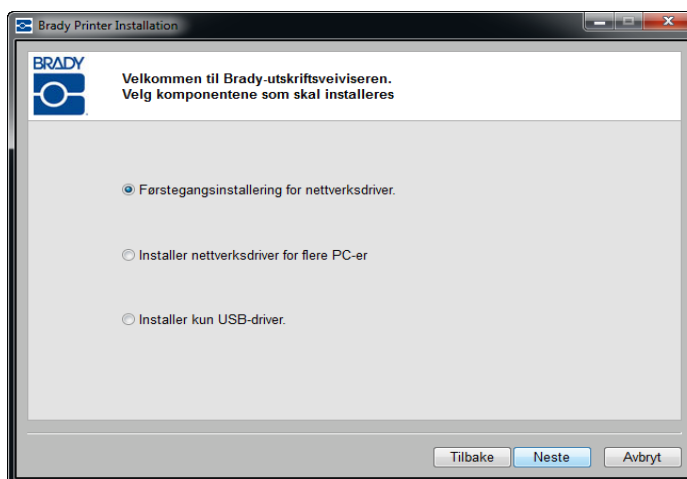


6. KOBLE FRA skriveren og PC-en nå dersom disse fremdeles er tilkoblet via USB-kabel.

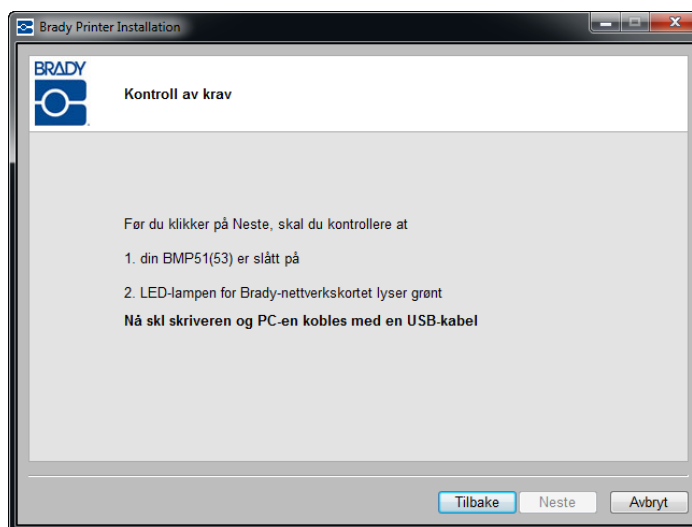
7. Klikk på Neste.



8. Klikk på *Førstegangsinstallering for nettverksdriver* (valgt som standard), og klikk deretter på Neste.



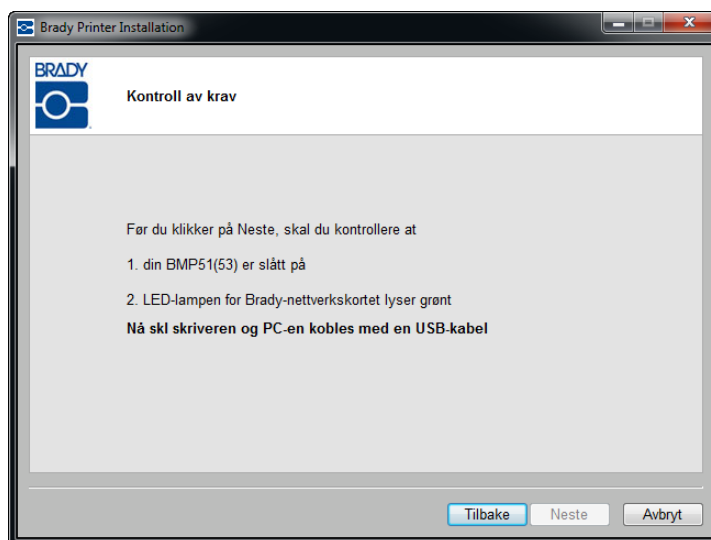
9. Kontroller at skriveren er slått på, og at LED-lampen på Brady-nettverkskortet lyser fast grønt.



## 24 | Installering av Brady-nettverkskortet

### Førstegangsinstallering for Ethernet-utskrift

10. Koble skriveren til PC-en med en USB-kabel, og klikk deretter på Neste.



Hvis du installerer skriverdriverne på Windows XP, vises *Veiviser for funnet maskinvare*. Hvis denne vises, fortsetter du med trinn 11. Hvis ikke, går du til trinn 15 på [side 26](#).

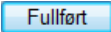
11. Klikk på radioknappen *Ja, nå og hver gang jeg kobler til en enhet*. Klikk deretter på Neste.



12. Klikk på radioknappen *Installer programvare automatisk (Anbefales)*.  
Klikk deretter på Neste.



Installeringen fortsetter.

13. Klikk på Fullfør  for å lukke veiviseren når du er ferdig.

14. Klikk på Neste.

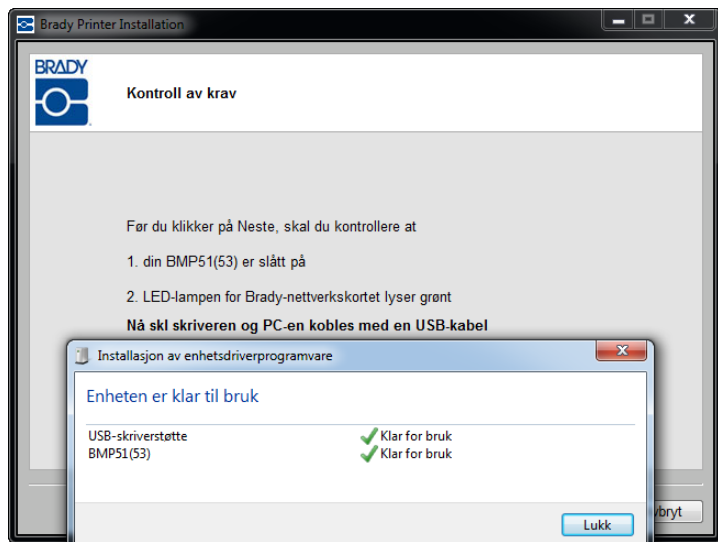


## 26 | Installering av Brady-nettverkskortet

### Førstegangsinstallering for Ethernet-utskrift

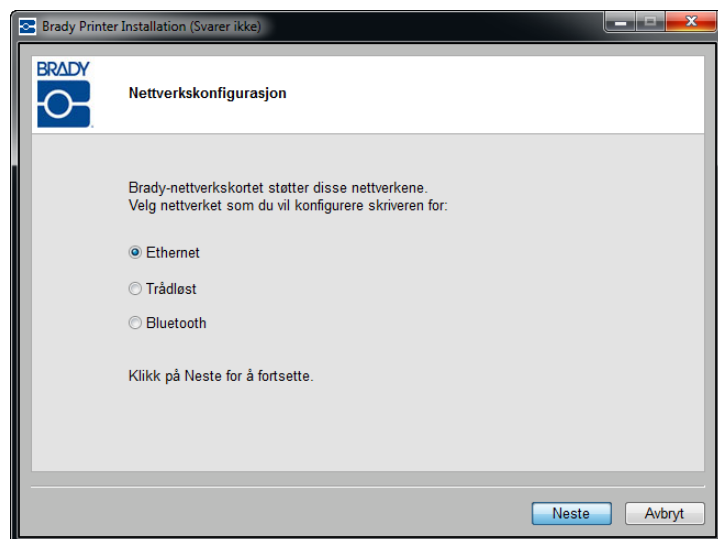
15. En melding vises om at enheten er klar til bruk. Klikk på Lukk for å fjerne denne meldingen.

Tilkoblingen installeres og verifiseres.



Nettverkene som støttes av Brady-nettverkskortet, vises. Slik aktiveres Ethernet:

16. Klikk på radioknappen *Ethernet* og deretter på Neste.



17. Angi et navn / en beskrivelse som er lett å identifisere for denne nettverkstilkoblingen i feltet *Skriverbeskrivelse*. Hvilke som helst alfanumeriske tegn kan brukes.

Standard DHCP-protokoll anbefales i feltet *Nettverksardesstype*. Hvis du bruker DHCP, går du til trinn 22 på [side 27](#).

### Bruke statisk nettverksadresse

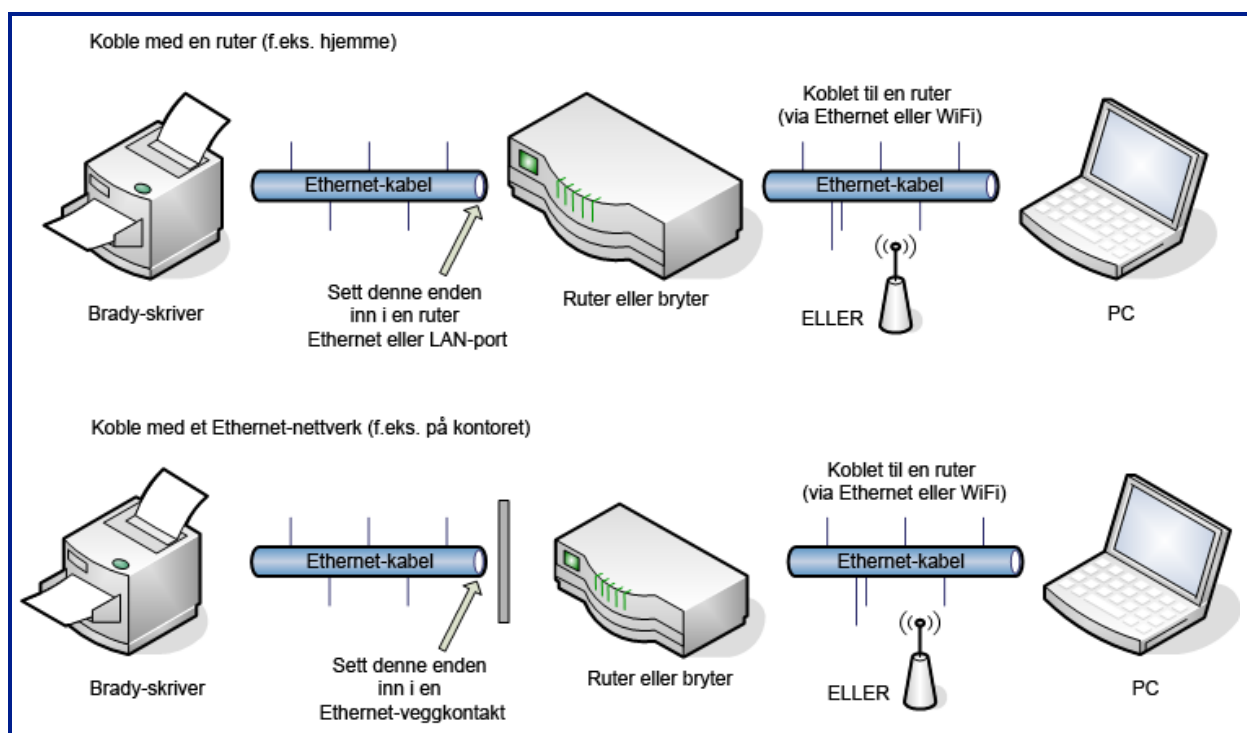
Hvis du vil bruke statisk adresse, må feltene IP-adresse, Nettverksmaske og Standard gateway fylles ut. Denne informasjonen får du fra nettverksadministratoren på stedet. Slik bruker du statisk adresse:

18. Klikk på radioknappen *Statisk*. Dette åpner de nødvendige feltene for angivelse av adresser.
19. Klikk på feltet *IP-adresse* og angi ønsket IP-adresse. Markøren går til de forskjellige delene i IP-adressefeltet.
20. Klikk på feltet *Nettverksmaske* og angi nettverksmasken.
21. Klikk på feltet *Standard gateway* og angi gateway-adressen.
22. Klikk på Neste når du er ferdig.

Kontroller at Ethernet-kabelen er tilkoblet skriveren, og at skriveren og PC-en er tilkoblet samme nettverk.



Se retningslinjene nedenfor som gjelder tilkobling, for å verifisere at skriveren og PC-en er på samme nettverk.



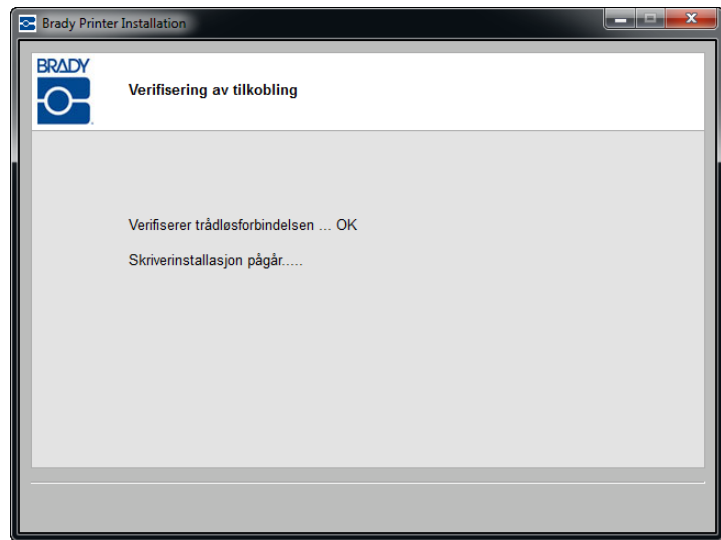
**Figur 1 • Nettverkstilkoblinger**

**23.** Klikk på Neste.



Ethernet-tilkoblingen verifiseres.

Hvis du valgte Statisk i trinn 18, er nettverksskriverne allerede etablert og tilordnet IP-adressen du anga i 19. Fortsett til trinn 33 på [side 32](#).

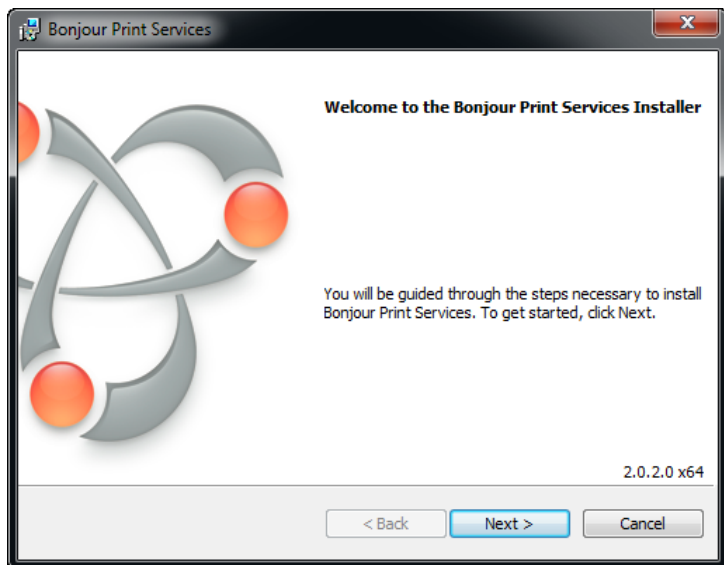


Hvis ikke fortsetter du med følgende Bonjour Print Services-program.

### Bonjour Print Services

Hvis du brukte standard DHCP-innstilling med PC-en og skriveren på samme nettverk, og Ethernet-tilkoblingen er etablert, starter Bonjour-veiviseren. Bonjour-programmet skal opprette og overvåke nettverksskrivere. Skriverveiviseren på Bonjour oppretter Brady-skriveren som en nettverksskriver.

**24.** Klikk på Neste.



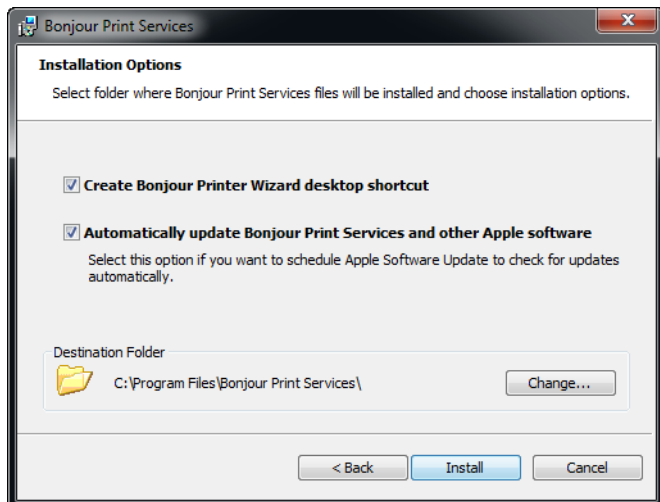
Apples lisensavtale som gjelder sluttbrukere, vises.

25. Klikk på *Jeg godtar betingelsene i lisensavtalen* etter at den er lest, og klikk deretter på Neste for å fortsette.
26. Klikk igjen på Neste på skjermen Les informasjon.

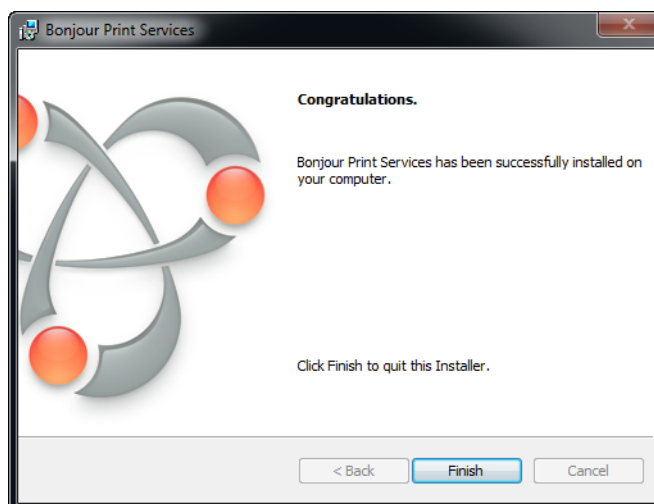


Velg ønskede alternativer for Bonjour-veiviseren og hvor du vil installere programvaren Bonjour Print Services.

27. Hvis du vil endre standard lagringsplass, klikker du på Endre og følger den vanlige Windows-fremgangsmåten for å finne en annen mappe.
28. Klikk på Installer når du er klar.



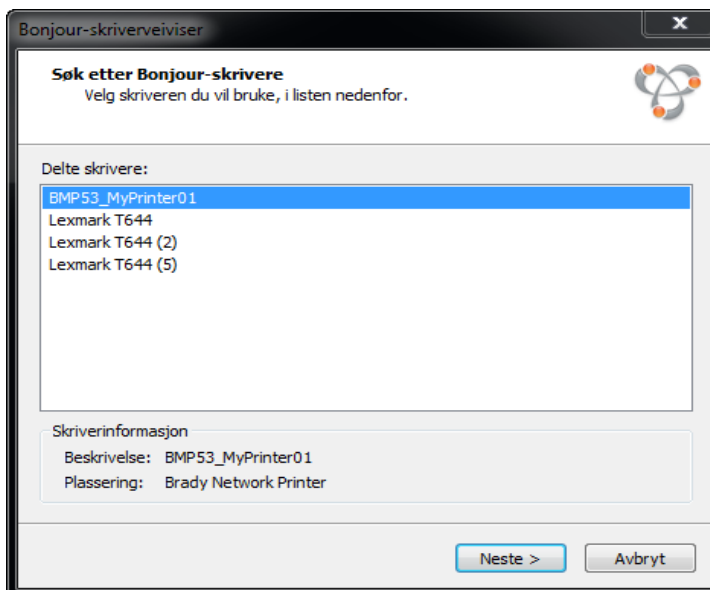
29. Når Bonjour Print Services er installert, klikker du på Fullfør.



30. Klikk på det tildelte nettverksskrivernavnet.

Navnet eller beskrivelsen som ble tildelt i trinn 17, vises nederst til venstre på skjermen for å gjøre det lettere å identifisere.

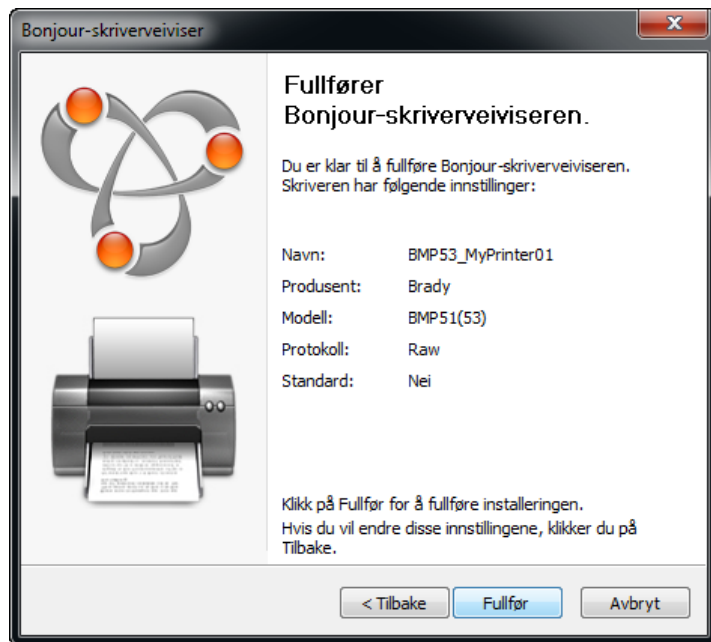
31. Klikk på Neste.



## 32 | Installering av Brady-nettverkskortet

### Førstegangsinstallering for Ethernet-utskrift

32. Klikk på Fullført etter at skriverveiviseren på Bonjour er ferdig.



Installering av Brady-skriveren er fullført.

33. Klikk på Fullført for å avslutte veiviseren.



## Bluetooth-utskrift for mobiltelefoner

Utskriftsjobber kan sendes direkte til skriveren med Bluetooth dersom Brady-mobilprogrammet er installert på telefonen. Du behøver ikke installere noe ekstra programvare. Skriveren må være på, og LED-en på Brady-nettverkskortet må være grønn.

### ***Forhåndsprogrammert PIN-kode***

Dersom Brady-mobilprogrammet ber om PIN-koden til Brady-skriveren som det opprettes kommunikasjon med, bruk den forhåndsprogrammerte PIN-koden første gang: 0000.

Denne PIN-koden kan endres i konfigurasjonsverktøyet for Brady-nettverkskortet. Se [side 41](#) (Installere kun USB-driverne) for informasjon om hvordan du installerer konfigurasjonsverktøyet. Se [side 77](#) for informasjon om hvordan du endrer PIN-koden.

### ***Forhåndsprogrammert navn***

Navnet på skriveren kan også endres med konfigurasjonsverktøyet for Brady-nettverkskortet. Se [side 41](#) (Installere kun USB-driverne) for informasjon om hvordan du installerer konfigurasjonsverktøyet. Se [side 77](#) for mer informasjon om hvordan du endrer skrivernavnet.

## Installering for flere PC-er

**Bruk denne installeringsprosessen dersom skriveren ble konfigurert tidligere, men der det nå skal brukes en annen PC for å sende utskriftsjobber til skriveren.**

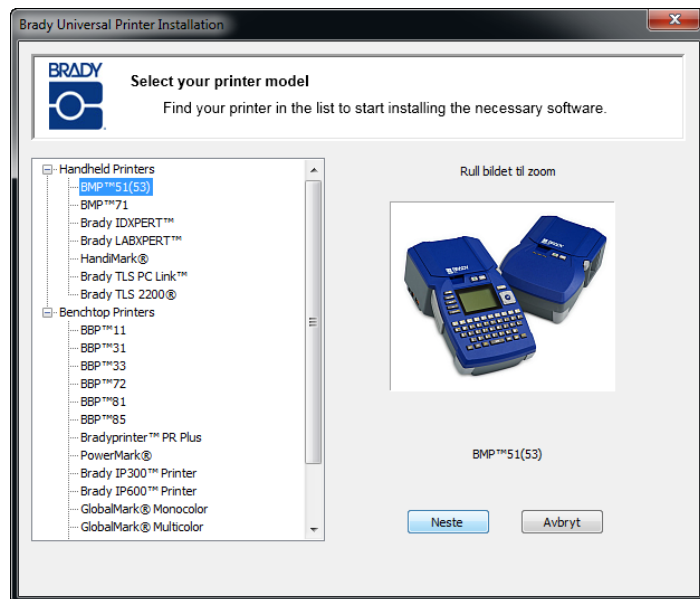
**Merk:** Den andre PC-en må være på samme nettverk som skriveren. Dersom den ikke er det, vil den ikke bli funnet under installering.

Så snart Brady-nettverkskortet er konfigurert for Ethernet eller WiFi, kan du installere disse nettverksdriverne på andre PC-er.

1. Sett CD-en med Brady universal skriverdriver, inn i CD-stasjonen på datamaskinen.

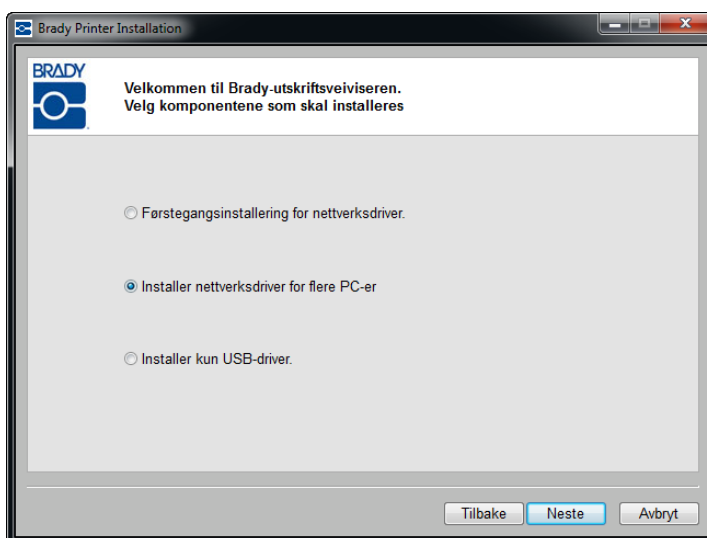
Installeringsveiviseren starter automatisk.

2. Klikk på skrivermodellen som skal installeres.
3. Klikk på Neste.

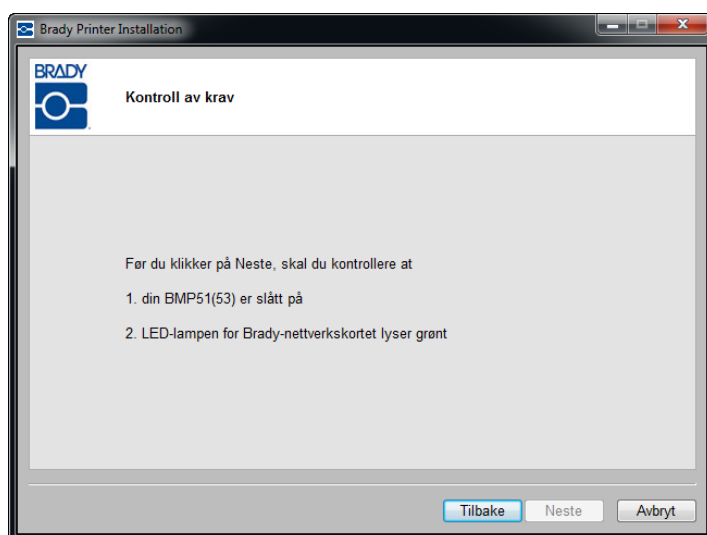


4. Klikk på *Installer nettverksdriver for flere PC-er*.

5. Klikk på Neste.



6. Klikk på Neste etter at du har verifisert at skriveren er slått på, og at Brady-nettverkskortet fungerer som det skal.

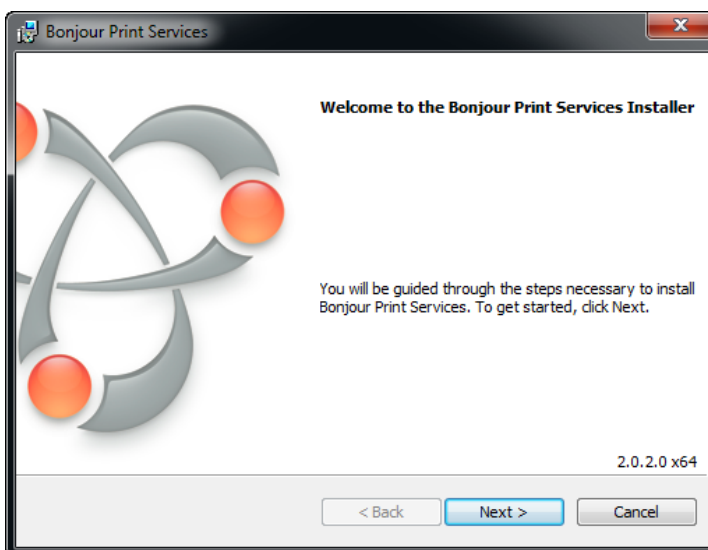


### Bonjour Print Services

Bonjour-veiviseren starter.

Bonjour-programmet skal opprette og overvåke nettverksskrivere. Skriverveiviseren på Bonjour oppretter Brady-skriveren som en nettverksskriver.

7. Klikk på Neste.



Apples lisensavtale som gjelder sluttbrukere, vises.

8. Klikk på *Jeg godtar betingelsene i lisensavtalen* etter at den er lest, og klikk deretter på Neste for å fortsette.

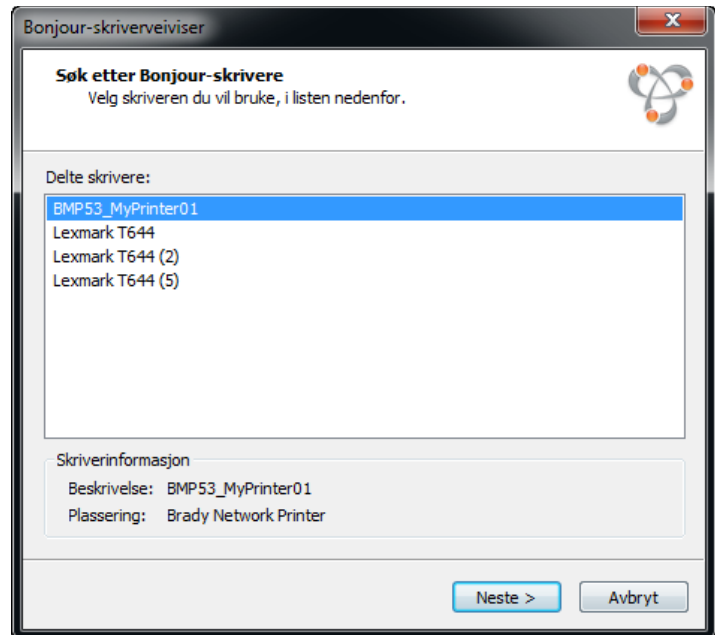




9. Klikk på det tildelte nettverksskrivernavnet.

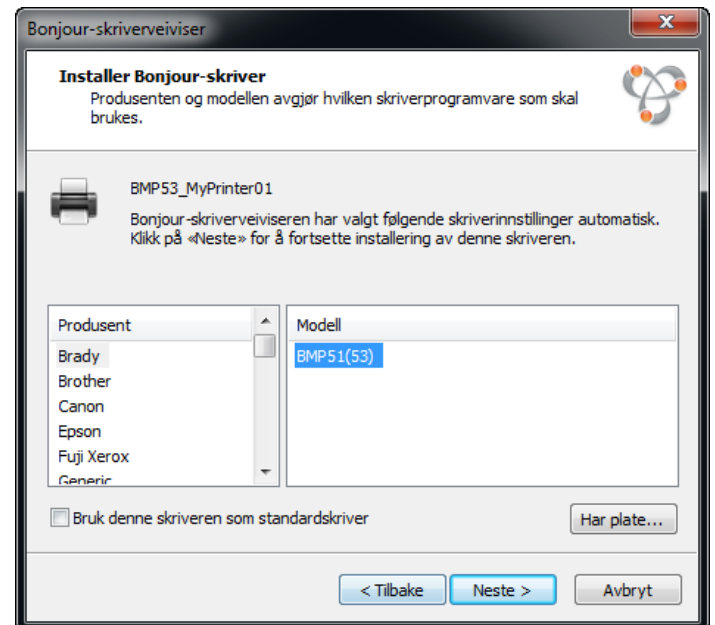
Navnet eller beskrivelsen som ble tildelt ovenfor, vises en nederst venstre hjørne på skjermen for å gjøre det lettere å identifisere.

10. Klikk på Neste.

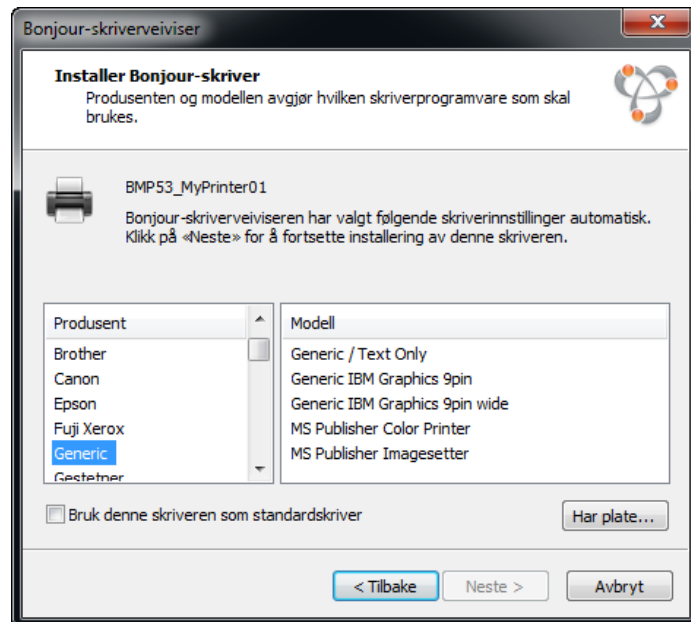


11. Klikk på Brandy i feltet *Produsent* (produsentene står i alfabetisk rekkefølge).  
Klikk deretter på skriveren i feltet *Modell* for å installere den.

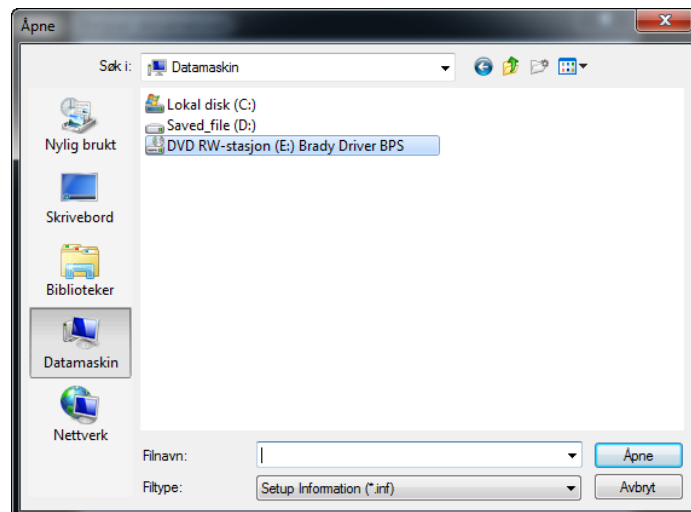
12. Klikk på Neste.



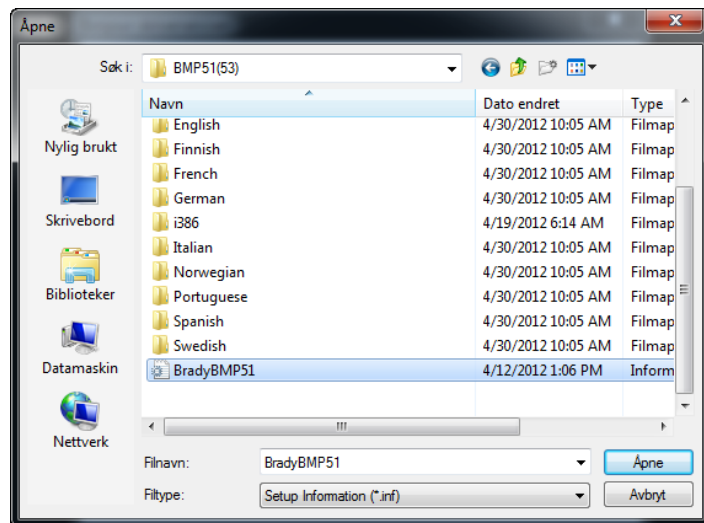
13. Klikk på Har plate dersom Brady ikke finnes i feltet *Produsent*.



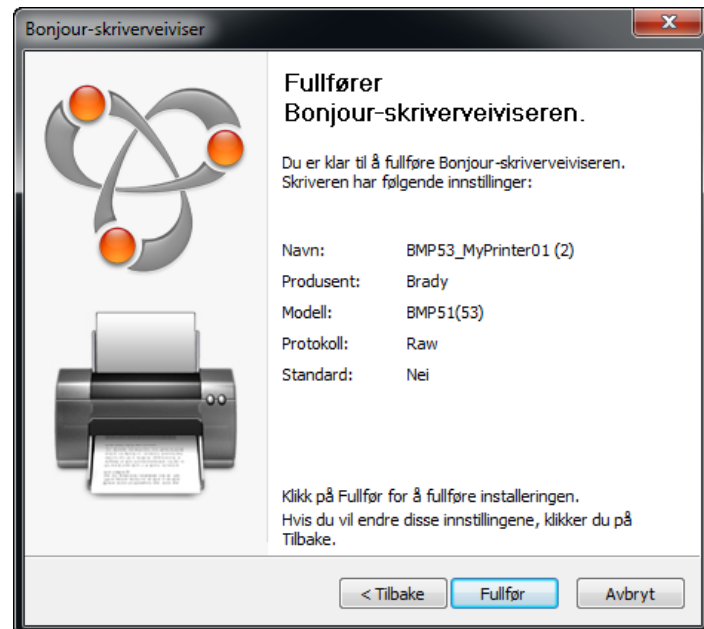
14. Bla gjennom den medfølgende CD-en og finn INF-filen til skrivermodellen.



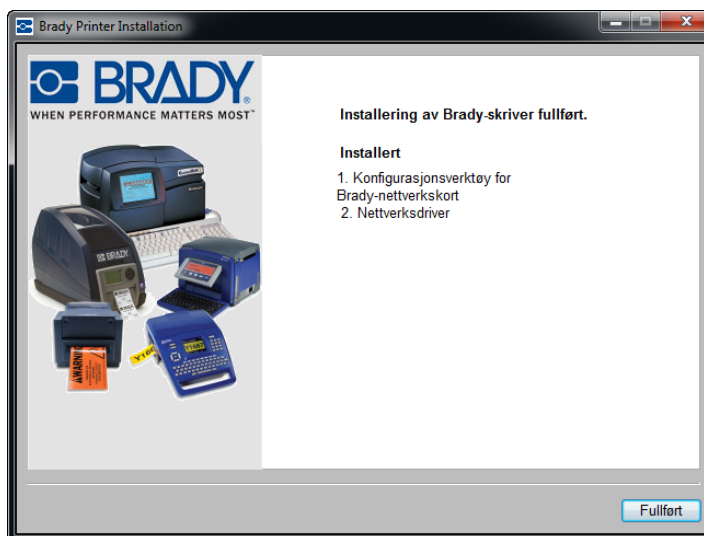
Eksemplet til høyre viser INF-filen for å installere en BMP51-skriver.



- Klikk på Fullført etter at skriverveiviseren på Bonjour er ferdig.



- 16.** Installering av Brady-skriveren er fullført. Klikk på Fullført for å avslutte veiviseren.



## Installering for kun USB-driveren

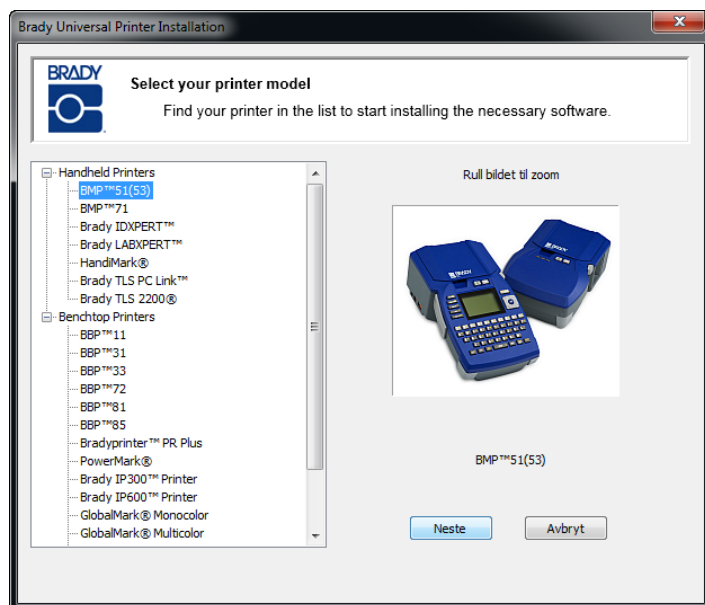
**Bruk denne installeringsprosessen hvis du har tenkt å sende utskriftsjobber fra en PC kun med en USB-kabel.**

Gjør følgende for å installere skriverdriveren på Brady-skriver, og installer konfigurasjonsverktøyet for Brady-nettverkskortet.

1. Sørg for at skriveren og PC-en **IKKE** er koblet til en USB-kabel.
2. Sett CD-en med Brady-skriverdriverne, inn i CD-stasjonen på datamaskinen.

Installeringsveiviseren starter automatisk.

3. Slå på skriveren.
4. Klikk på skrivermodellen som skal installeres.
5. Klikk på Neste.

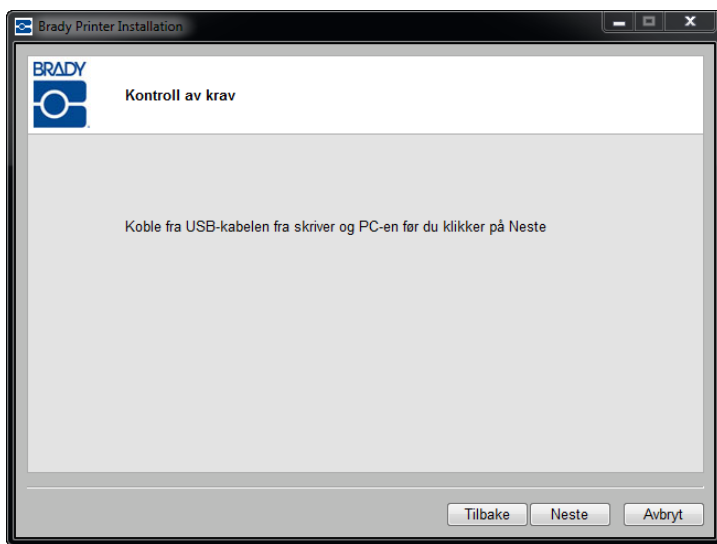


## 42 | Installering av Brady-nettverkskortet

### Installering for kun USB-driveren

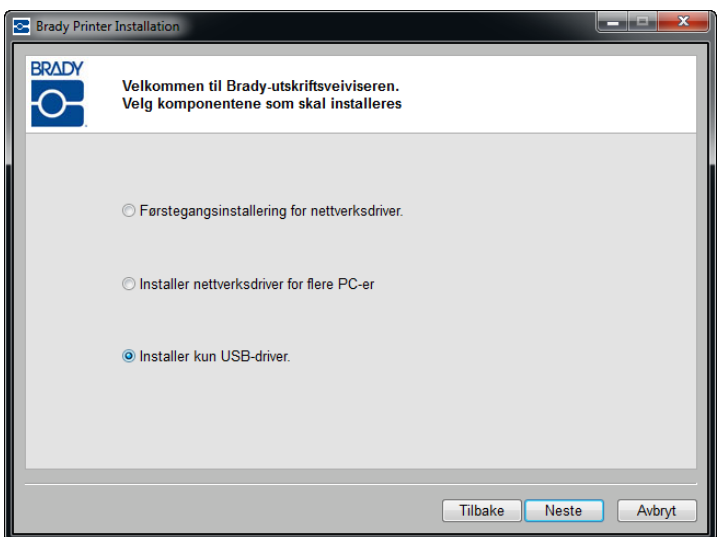
6. **KOBLE FRA** skriveren og PC-en nå dersom disse fremdeles er koblet til en USB-kabel.

7. Klikk på Neste.

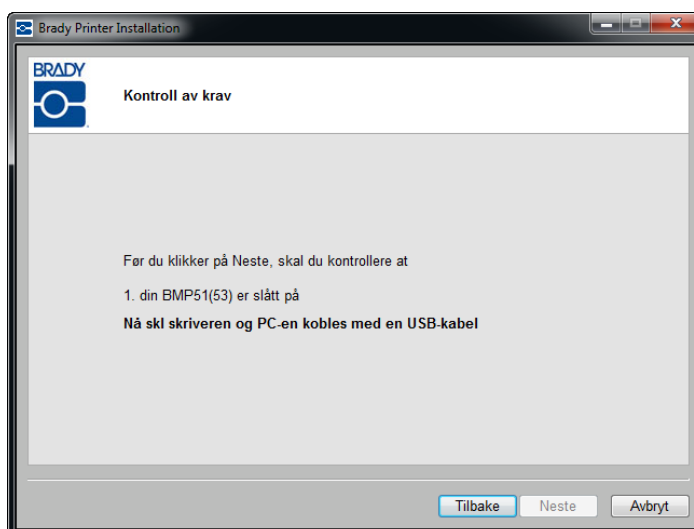


8. Klikk på radioknappen *Installer kun USB-driver.*

9. Klikk på Neste.



10. Koble skriveren til PC-en med en USB-kabel.



Dersom *Veiviser for funnet maskinvare* vises, fortsetter du med trinn 11. Hvis ikke, går du til trinn 15 på [side 45](#).

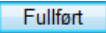
11. Klikk på radioknappen *Ja, nå og hver gang jeg kobler til en enhet*. Klikk deretter på Neste.



12. Klikk på radioknappen *Installer programvare automatisk (Anbefales)*.  
Klikk deretter på Neste.



Installeringen fortsetter.

13. Klikk på Fullfør  for å lukke veiviseren når du er ferdig.

14. Klikk på Neste.





15. Klikk på Fullført når konfigurasjonsverktøyet for Brady-nettverkskortet og USB-driveren er installert.



## Førstegangsinstallering for ad hoc-utskrift

Bruk denne installeringsprosessen for å koble PC-en trådløst, uten ruter, til skriveren. Dette kalles en P2P (peer-to-peer)-tilkobling. Den trådløse tilkobling gjør det mulig å sende utskriftsjobber til skriveren fra utenom kontoret.

Følgende tre trinn må utføres for å sette opp ad hoc-utskrift:

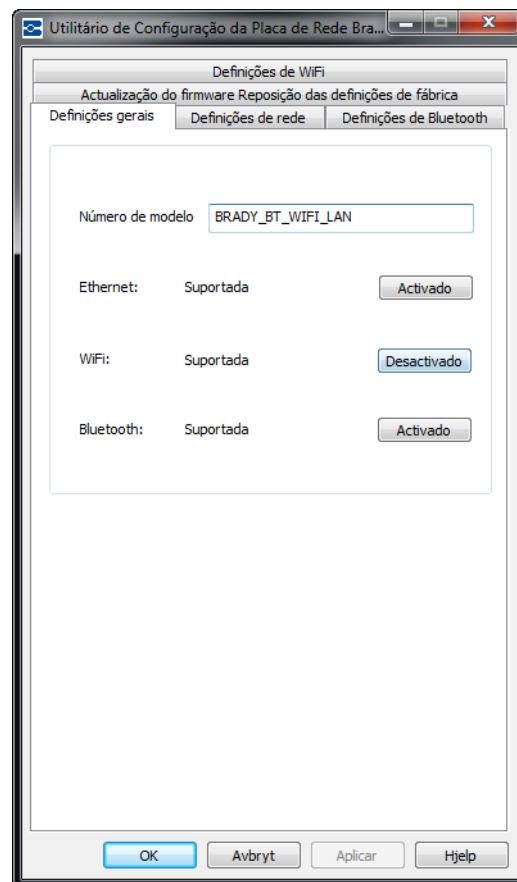
1. Installer USB-driveren.
2. Etabler ad hoc-tilkobling.
3. Installer nettverksdriver.

### ***Installer USB-driver***

Følg trinn 1 t.o.m. 10 (begynn med [side 41](#)) for USB-installering.

## Etabler ad hoc-tilkobling

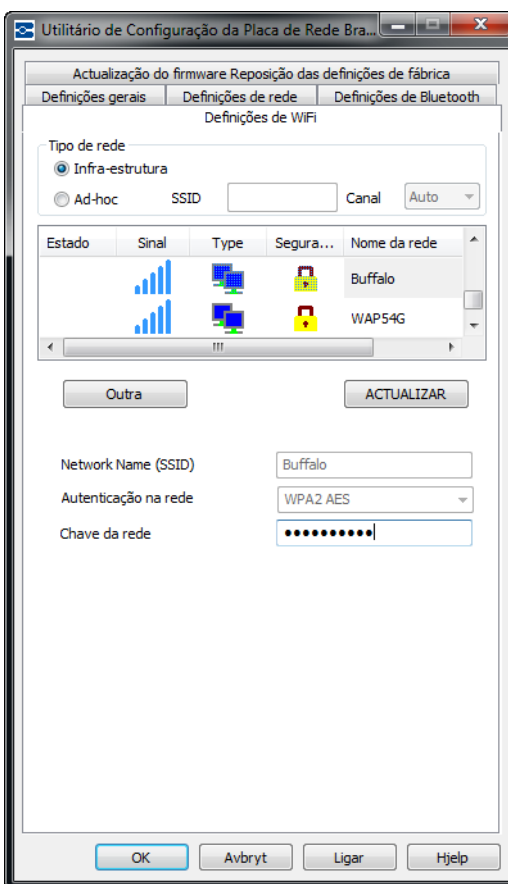
1. Åpne konfigurasjonsverktøyet for Brady-nettverkskortet ved å velge **Start>Programmer>Brady>Brady-nettverkskort>Konfigurasjonsverktøyet for Brady-nettverkskort**.
2. Klikk på kategorien Generelle innstillinger (dersom den ikke allerede vises).
3. Kontroller at Trådløs er aktivert. Klikk på Aktiver for å aktivere WiFi-innstillingene dersom den er deaktivert.



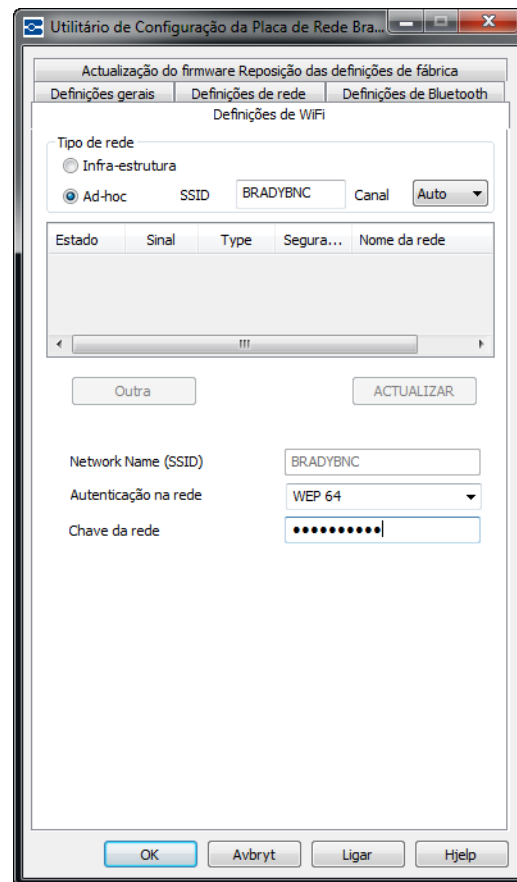
## 48 | Installering av Brady-nettverkskortet

### Førstegangsinstallering for ad hoc-utskrift

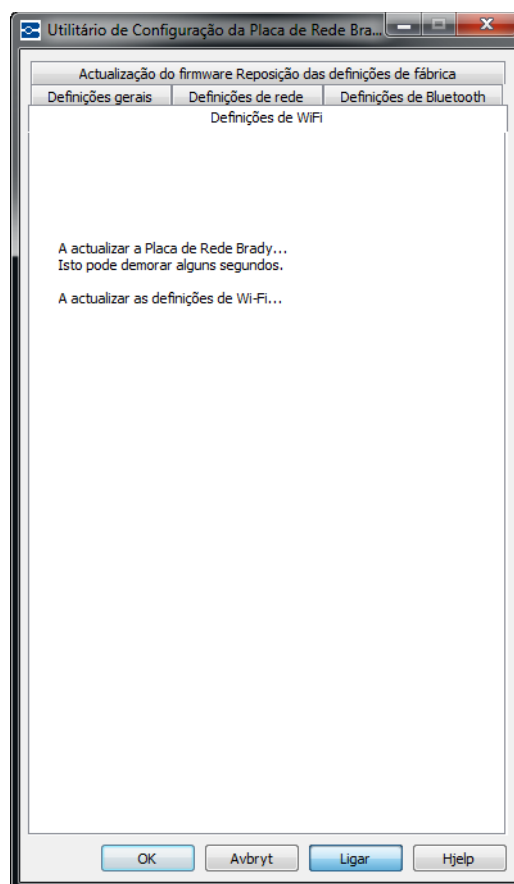
Programmet utfører en WiFi-skanning og visere en liste med tilgjengelige nettverk.



4. Klikk på radioknappen *Ad-hoc*, og angi SID (nettverksnavn) og kanal.



5. Klikk på Koble.  
WiFi-innstillingene oppdateres.



Slik vises de trådløse nettverkene som PC-en finner:

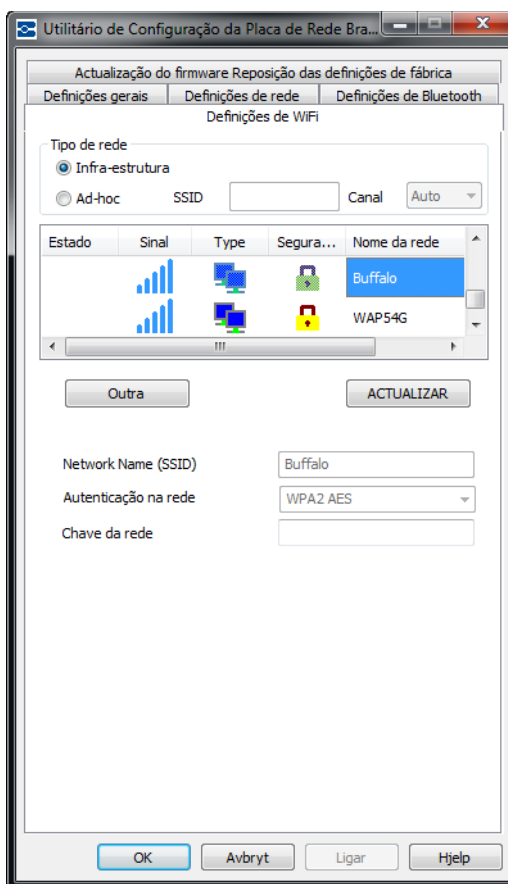
6. Velg **Start>Koble til>Trådløs nettverkstilkobling>Vis trådløse nettverk**.
7. Klikk på SSID (nettverksnavn) som ble angitt tidligere. Ikonet viser at det er en P2P-tilkobling.
8. Klikk på Koble.
- Ad hoc-tilkoblingen etableres.



**Merk:** Installasjonsprogrammet oppdager automatisk om det valgte nettverket er et personlig nettverk eller et virksomhetsnettverk.

### Personlig nettverk

Hvis det trådløse nettverket du har valgt på listen, er et personlig nettverk, vises nettverksnavnet (SSID) og nettverksautentiseringen automatisk.



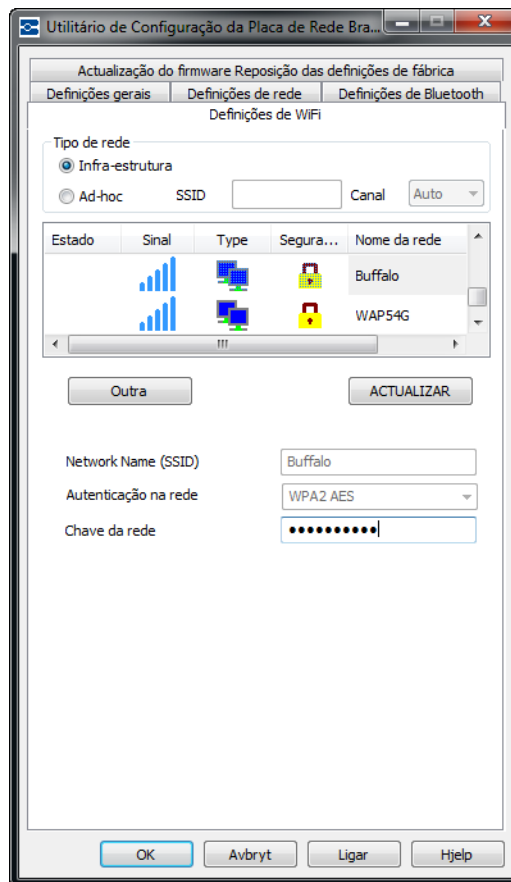
## 52 | Installering av Brady-nettverkskortet

### Førstegangsinstallering for ad hoc-utskrift

9. Angi tilgangsnøkkelen til det valgte nettverket.

Snakk med nettverksadministratoren dersom passordet eller sikkerhetstypen ikke er kjent.

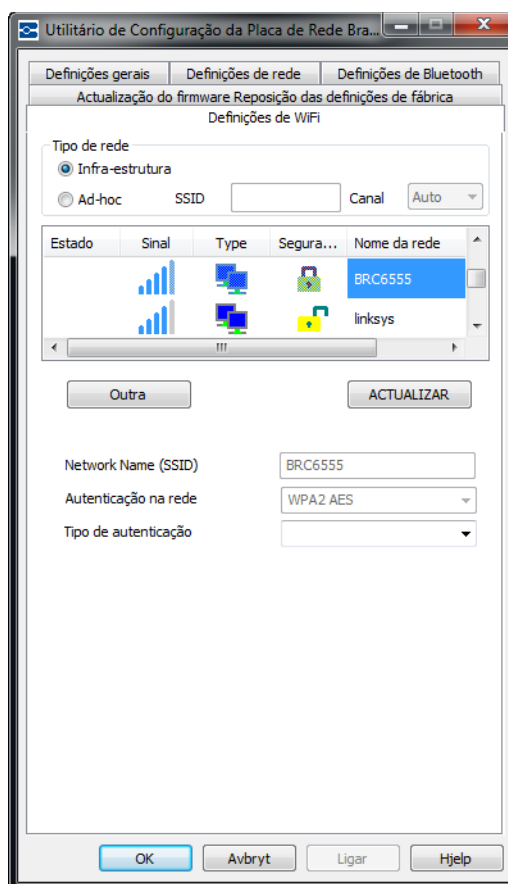
10. Klikk på Koble.





### Virksomhetsnettverk

Hvis det trådløse nettverket du har valgt på listen, er et virksomhetsnettverk, må autentiseringstype, brukernavn og passord oppgis.



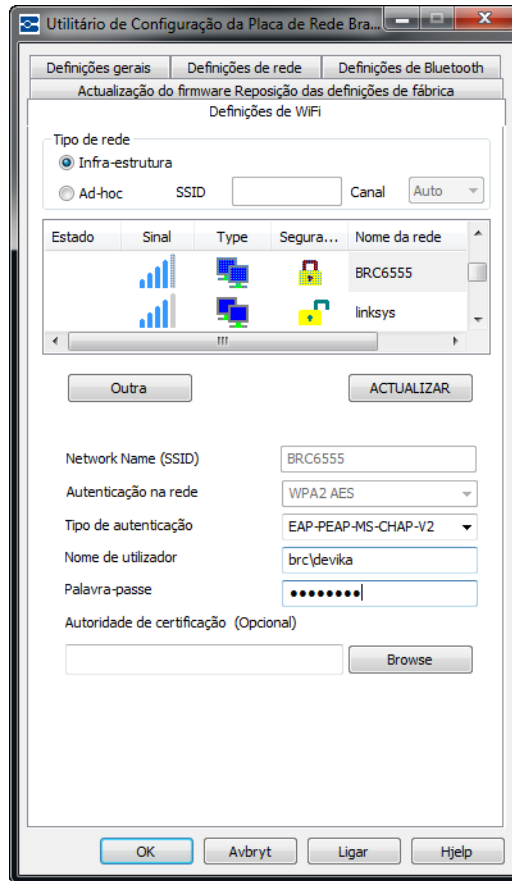
11. Klikk på pil ned og velg *Autentiseringstype*.  
(Hvis du ikke vet autentiseringstypen, kan du høre med nettverksadministratoren.)
12. Angi brukernavn og passord om aktuelt.  
Snakk med nettverksadministratoren for å finne ut om du allerede har fått et brukernavn.

---

**Merk:** Avhengig av valgt autentiseringstype må du kanskje oppgi brukernavn, passord og sertifikater. Se autentiseringstabellen på [side 14](#) for mer informasjon.

---

13. Klikk på Koble til når du er klar.

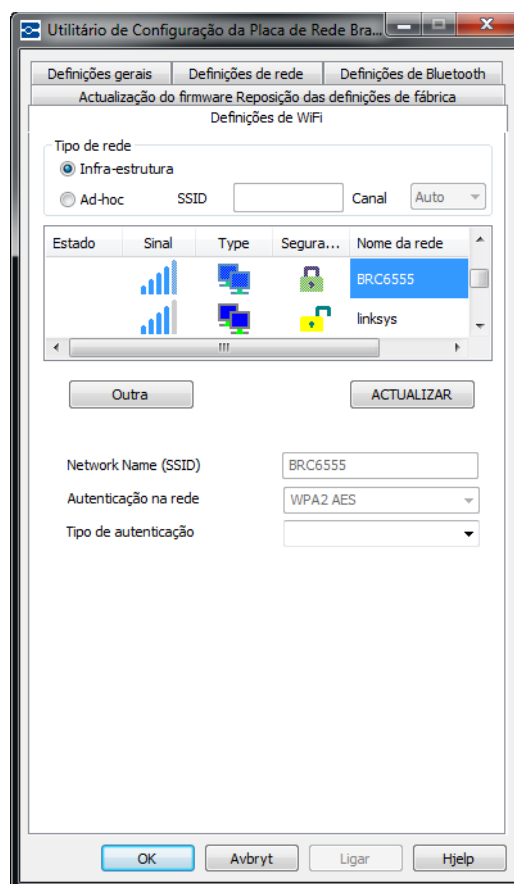


## Definere andre nettverk

Velg Annet for å spesifisere et nettverk manuelt dersom nettverket ikke vises på listen. Du må vite nettverksnavnet (SSID), sikkerheten som brukes, og om aktuelt tilgangsnøkkelen. Denne informasjonen får du fra nettverksadministratoren på stedet.

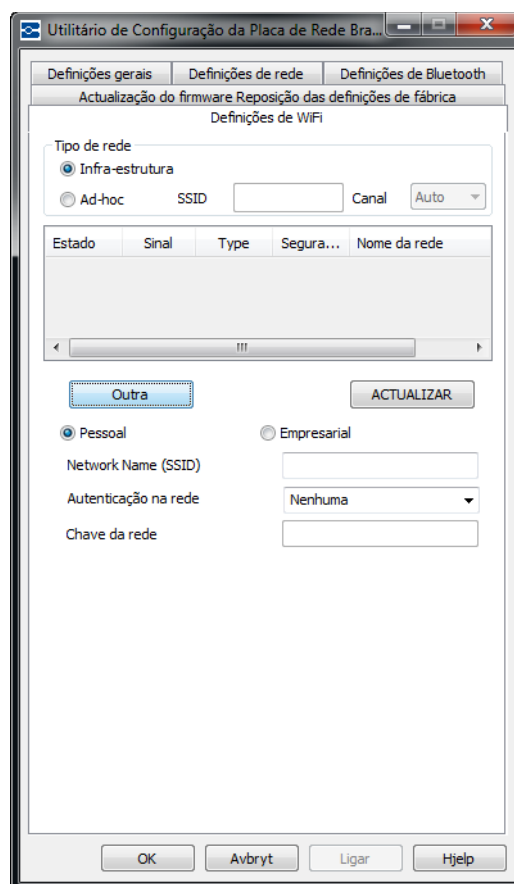
Slik navngir du et annet nettverk:

1. På skjermen WiFi-innstillinger klikker du på Annet-knappen **Annet**.



Et personlig nettverk kobler som regel PC-en til tilbehør, for eksempel en skriver. Et virksomhetsnettverk kobler sammen forskjellige avdelinger, for eksempel produksjonsavdelinger, hovedkontorer, eksterne kontorer og butikker, i den hensikt å dele dataressurser.

2. På skjermen for *Annet* nettverk klikker du på radioknappen – Personlig nettverk eller Organisasjonsnettverk – som best beskriver dette nettverket.



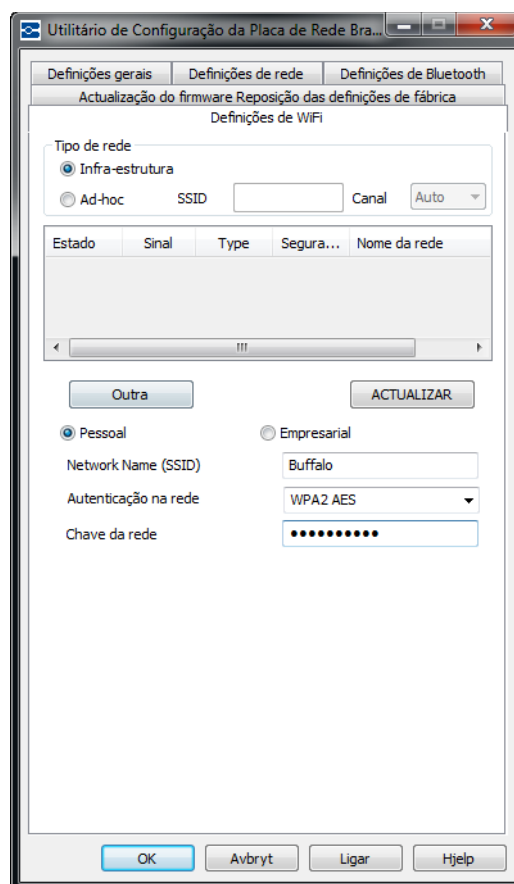
### Personlig nettverk

3. Hvis du klikker på Personlig nettverk, angir du nettverksnavnet (SSID).
4. I feltet Sikkerhet klikker du på pil ned og velger sikkerhetstypen.

Avhengig av valgt sikkerhet må du kanskje oppgi en tilgangsnøkkel. Se tabellene for autentiseringsmetoder og -typer på [side 14](#) for mer informasjon.

**Merk:** Du behøver ikke oppgi en autentiseringstype for personlige nettverk.

5. Fortsett til trinn 10 på [side 58](#).



### **Virksomhetsnettverk**

Hvis du klikker på Organisasjonsnettverk:

6. Angi nettverksnavnet (SSID).
7. I feltet Sikkerhet klikker du på pil ned og velger sikkerhetstypen.
8. Klikk på pil ned og velg *Autentiseringstype*. (Hvis du ikke vet autentiseringstypen, kan du høre med nettverksadministratoren.)
9. Angi brukernavn og passord om aktuelt. Snakk med nettverksadministratoren for å finne ut om du allerede har fått et brukernavn.

---

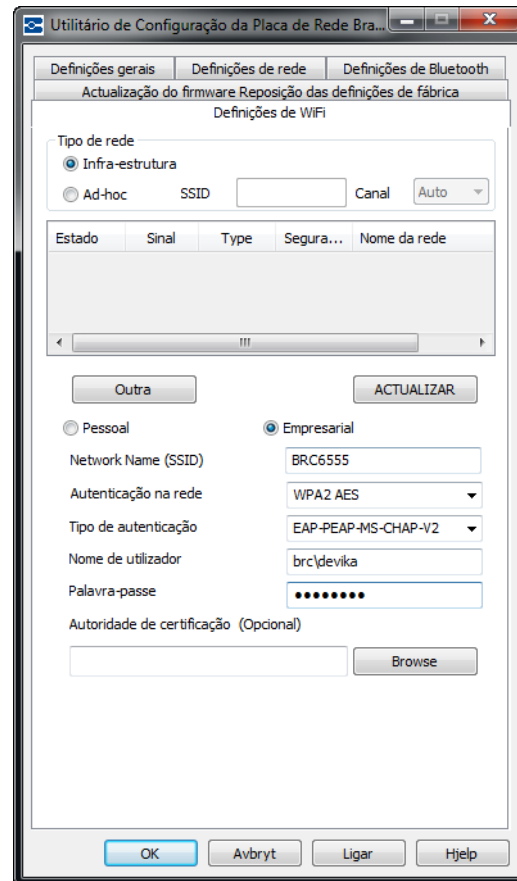
**Merk:** Avhengig av valgt autentiseringstype må du kanskje oppgi brukernavn, passord og sertifikater. Se autentiseringstabellen på [side 14](#) for mer informasjon.

---

10. Klikk på Koble til når du er klar.

### ***Installer nettverksdriver***

Se trinn 1 t.o.m. 13 i Installering av flere PC-er (begynn med [side 34](#)) for å installere nettverksdriver.

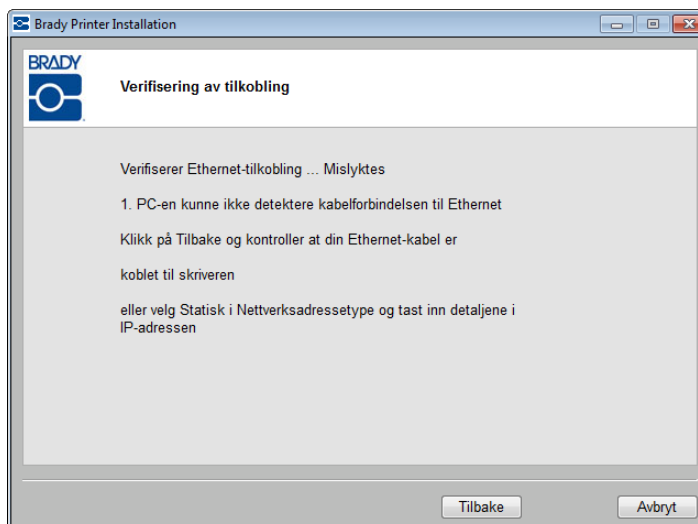


## Feilsøking

### Mislykket Ethernet-tilkobling

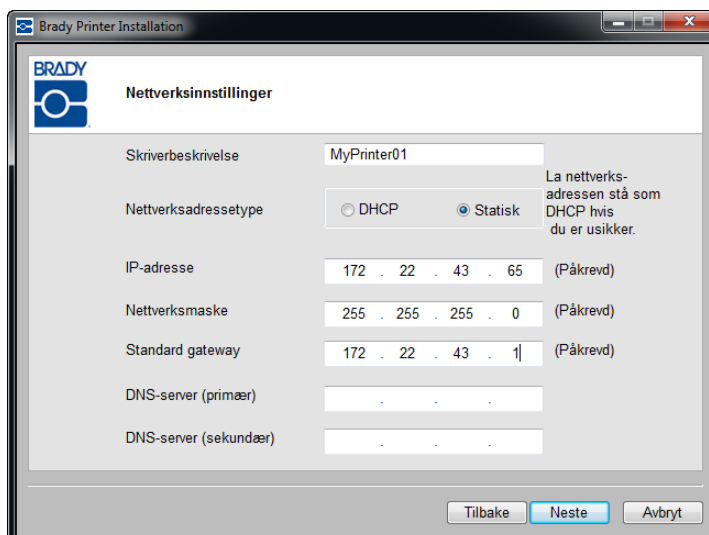
Det finnes to grunner til at Ethernet-tilkoblingen kan mislykkes:

1. Ethernet-kabelen er ikke tilkoblet skriveren.
2. PC-en og skriveren er ikke på samme nettverk.



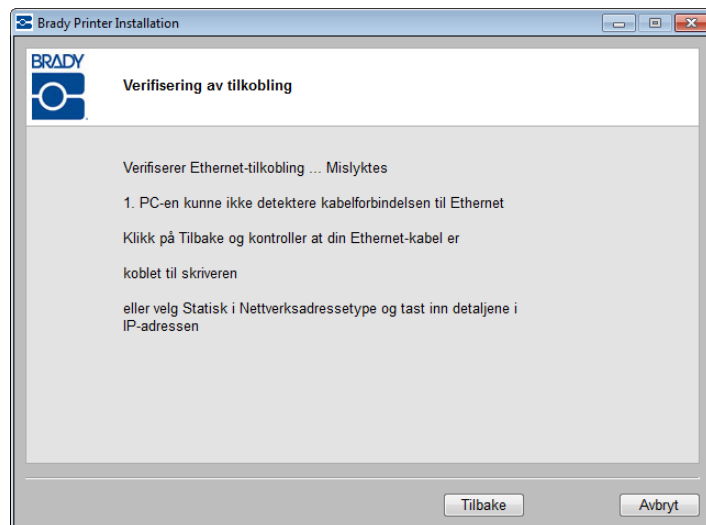
#### Ethernet-kabelen er ikke tilkoblet

1. Klikk på Tilbake.
2. Kontroller at Ethernet-kabelen er tilkoblet skriveren.
3. Klikk på Neste.



**PC-en og skriveren er ikke på samme nettverk**

1. Klikk på Tilbake.

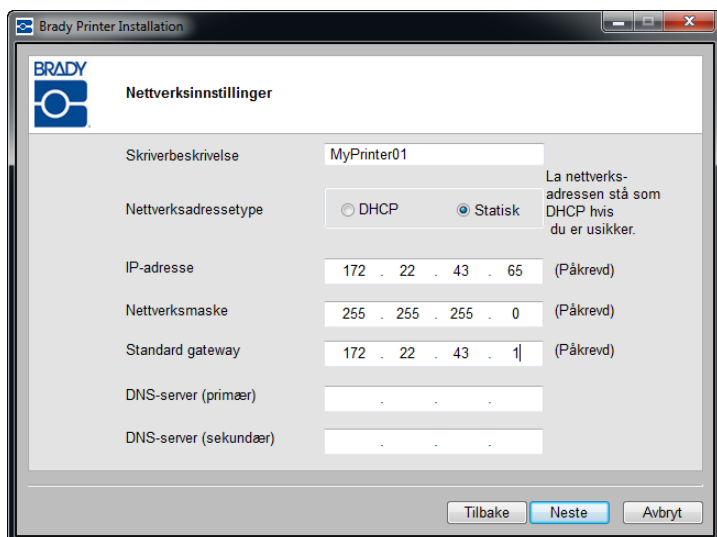


2. Verifiser at skriveren og PC-er er koblet til samme nettverk.  
(Se tilkoblingsdiagrammet på [side 28](#).)

ELLER

Klikk på nettsadressesypen Statisk og angi informasjon om IP-adressen.

**Merk:** Hvis det samme nettverket er valgt og tilkoblingen fremdeles mislykkes, kan det hende at en brannmur blokkerer tilkoblingen. Kontakt nettsadministratoren i dette tilfellet.





## Mislykket WiFi-tilkobling

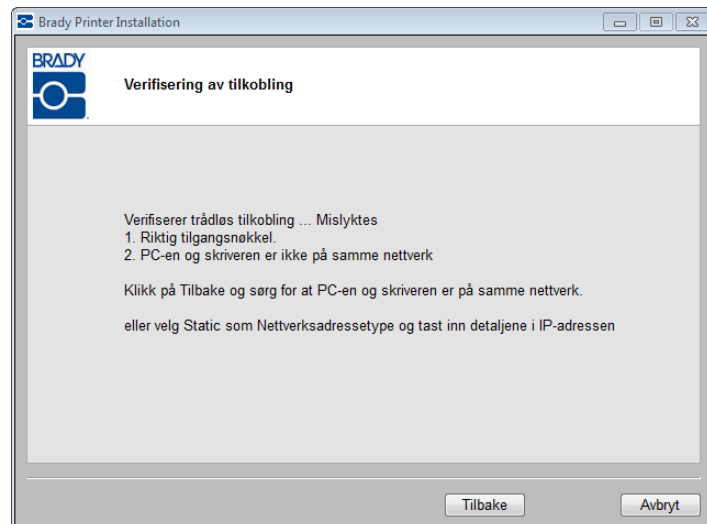
Det finnes to grunner til at WiFi-tilkoblingen kan mislykkes:

1. PC-en og skriveren er ikke på samme nettverk.
2. Feil tilgangsnøkkel eller sikkerhetskode ble lagt inn.

### PC-en og skriveren er ikke på samme nettverk

#### Personlig nettverk

1. Klikk på Tilbake.

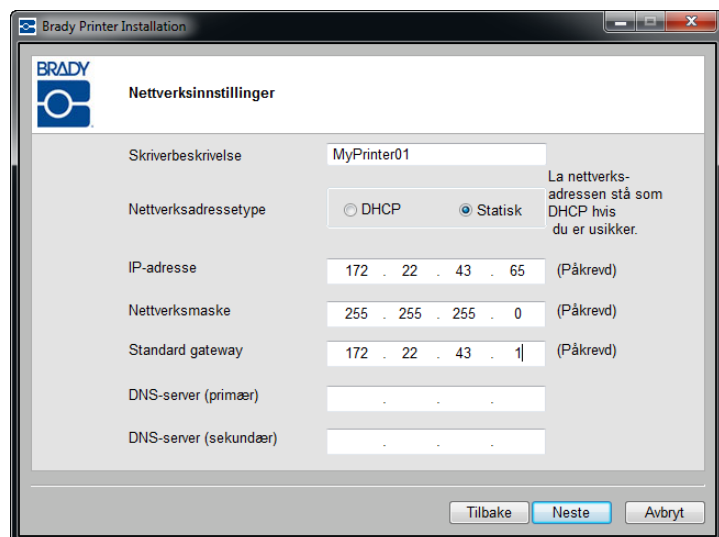


2. Verifiser at skriveren og PC-er er koblet til samme nettverk.  
(Se tilkoblingsdiagrammet på [side 28](#).)

ELLER

Klikk på nettverksadressetypen Statisk og angi informasjon om IP-adressen.

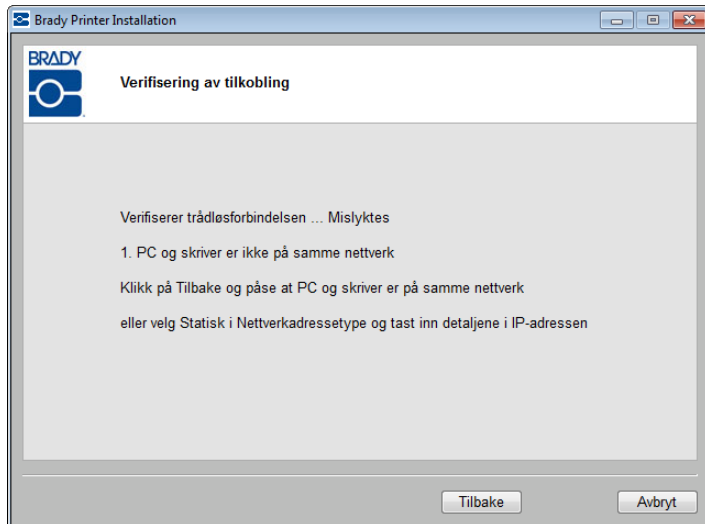
**Merk:** Hvis det samme nettverket er valgt og tilkoblingen fremdeles mislykkes, kan det hende at en brannmur blokkerer tilkoblingen. Kontakt nettverksadministratoren i dette tilfellet.



3. Klikk på Neste når du er ferdig.

Virksomhetsnettverk:

1. Klikk på Tilbake.

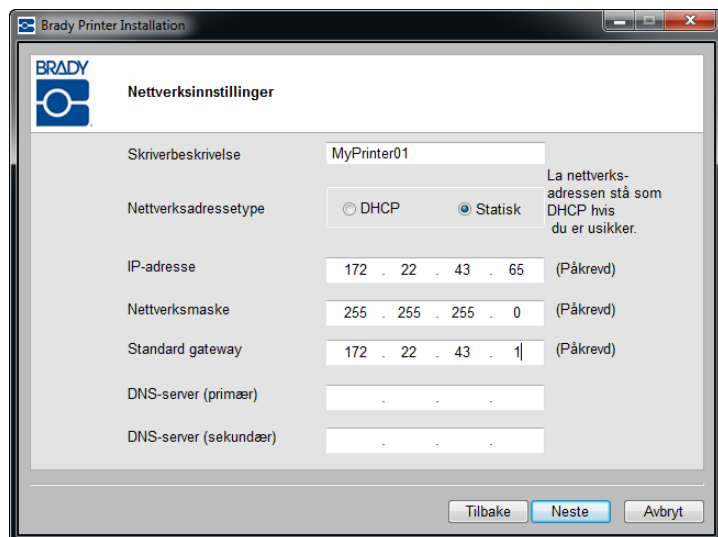


2. Verifiser at skriveren og PC-en er på samme nettverk.

ELLER

Klikk på nettverksadressetypen Statisk og angi informasjon om IP-adressen.

3. Klikk på Neste når du er ferdig.

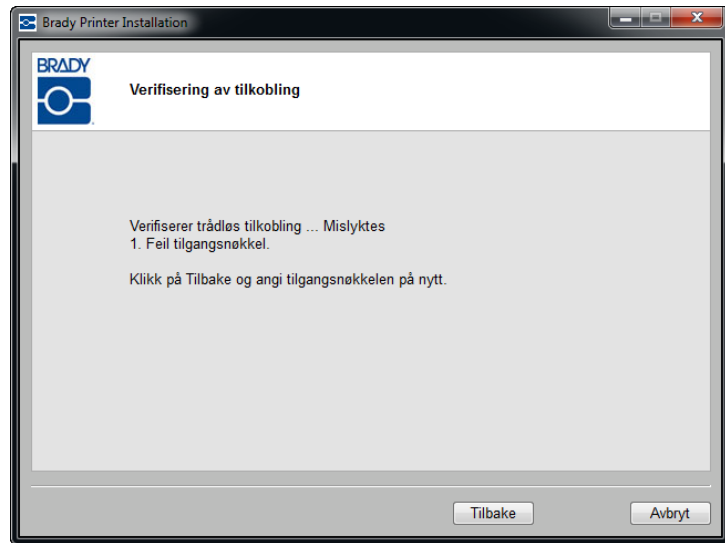


## **Feil tilgangsnøkkel eller sikkerhetsmodus**

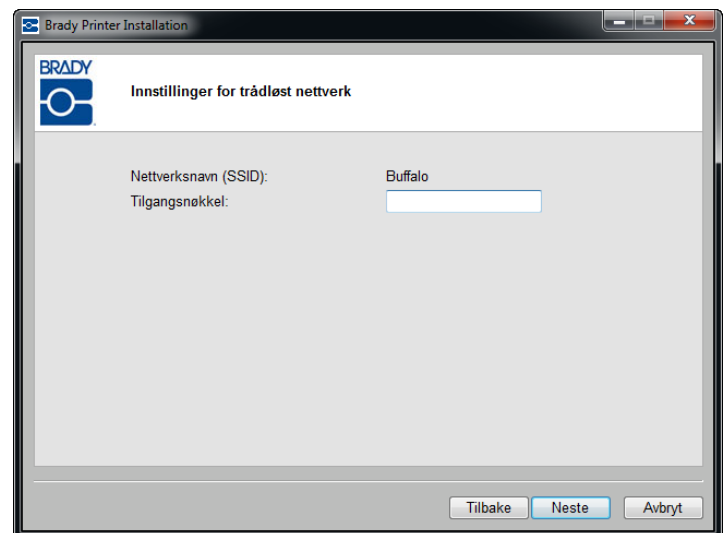
### Personlig nettverk

Hvis tilkoblingen til et personlig nettverk mislykkes, er tilgangsnøkkelen mest sannsynlig feil. Slik korrigerer du tilgangsnøkkelen:

1. Klikk på Tilbake.

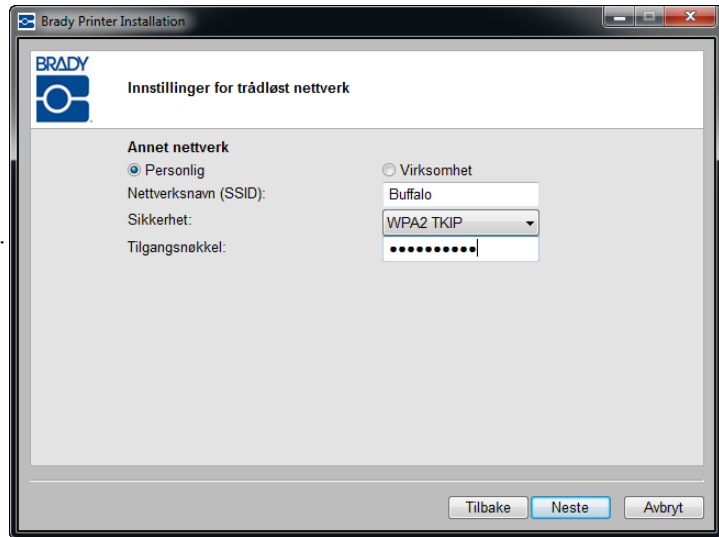


2. Angi riktig tilgangsnøkkel.



**Merk:** Hvis du valgte Annet på nettverkslisten, må du også angi sikkerhetsmodusen.

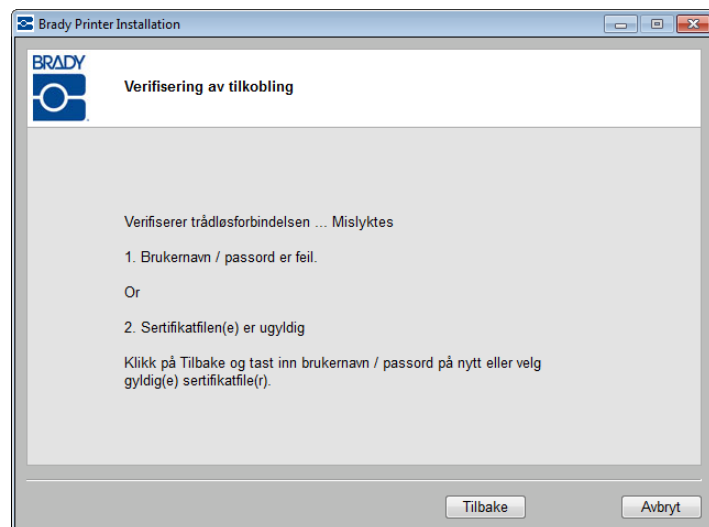
3. Klikk på Neste for å fortsette installeringen.



### Virksomhetsnettverk

Hvis tilkoblingen til et virksomhetsnettverk mislykkes, kan brukernavnet, passordet eller sertifikatene være feil. Slik korrigerer du tilgangsnøkkelen og/eller sertifikatene:

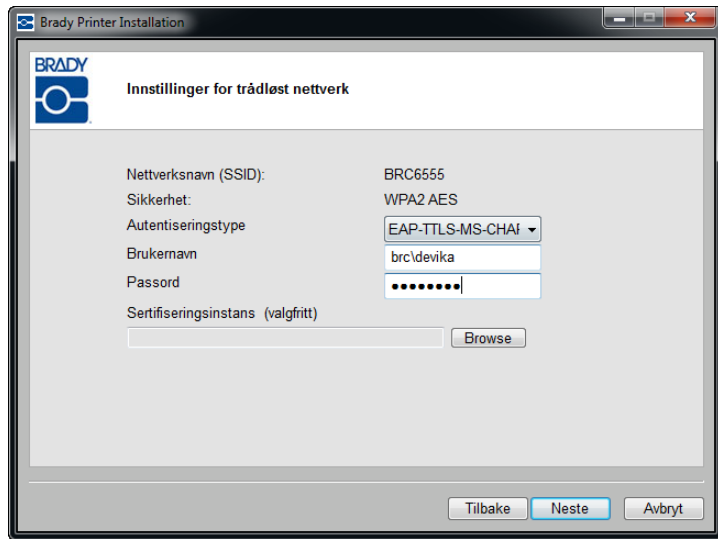
1. Klikk på Tilbake.



2. Angi riktig brukernavn eller passord.

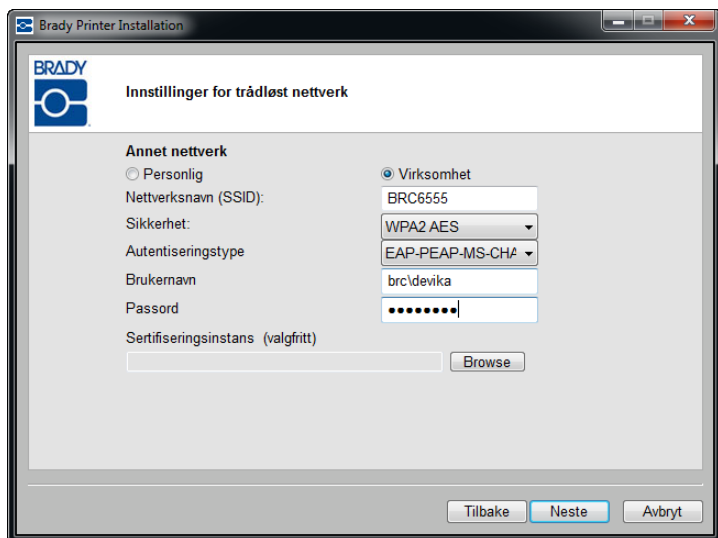
ELLER, avhengig av valgt autentiseringstype, hvis sertifikater trengs:

3. Angi sertifiseringsinstansene på nytt.
4. Klikk på Neste for å fortsette installeringen.



**Merk:** Hvis du valgte Annet på nettverkslisten, må du også angi sikkerhetsmodusen.

5. Klikk på pil ned i feltet Sikkerhet, og velg riktig sikkerhetstype.
6. Klikk på Neste for å fortsette installeringen.



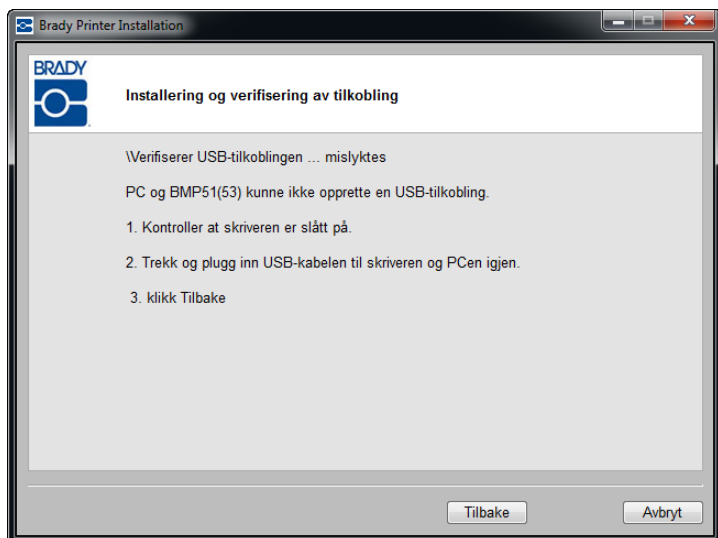
## Mislykket USB-tilkobling

Det finnes to grunner til at USB-tilkoblingen kan mislykkes:

- Skriveren er slått AV.
- USB-kabelen er ikke tilkoblet.

Dersom tilkoblingen var mislykket:

1. Klikk på Tilbake.
2. Slå PÅ skriveren, og koble til USB-kabelen.
3. Klikk på Neste for å forsøke på nytt.



## Konfigurasjonsverktøyet for Brady-nettverkskort

Når nettverksdriverne installeres, installeres også konfigurasjonsverktøyet og plasseres automatisk i Programmer under Start-knappen i Windows-programmet. Bruk konfigurasjonsverktøyet for å justere og endre konfigurasjonen som ble opprinnelig installert.

Slik aksesseres verktøyet:

1. Velg **Start>Programmer>Brady>Brady-nettverkskort>Konfigurasjonsverktøyet for Brady-nettverkskort**.

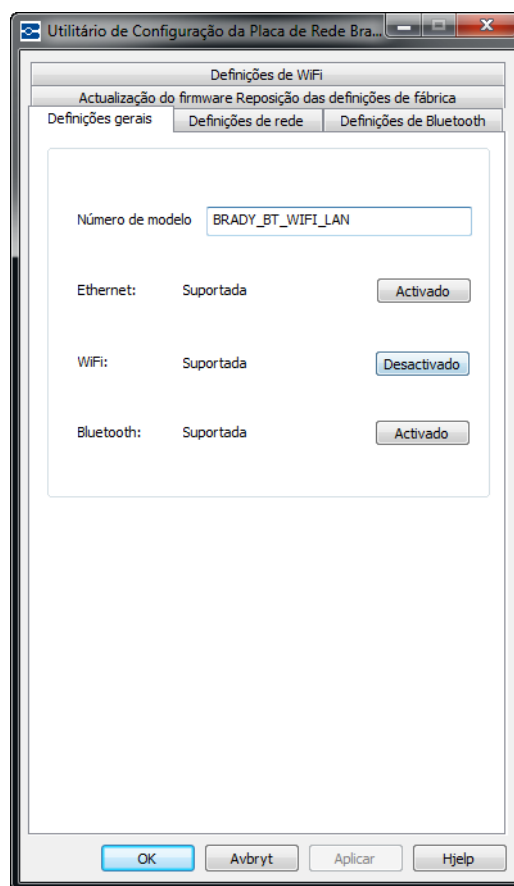
En dialogboks med flere kategorier, vises.

### Generelle innstillinger

Modellnummeret på Brady-nettverkskortet vises samt tidligere definerte tilkoblinger står oppført i kategorien Generelle innstillinger.

Slik endres statusen til hver konfigurasjon som støttes:

1. Klikk på Aktivert/Deaktivert-knappen for å endre tilkoblingens gjeldende tilstand.
2. Klikk på OK for å godta endringene og avslutte dialogboksen.



## Nettverksinnstillinger

Kategorien Nettverksinnstillinger vises den unike navnet som du ga skriveren og adressetypen som den bruker.

DHCP er den anbefalte innstillingen.

Feltene IP-adresse, Nettverksmaske og Standard gateway er påkrevd dersom Statisk velges.

Utilitário de Configuração da Placa de Rede Bra...

Atualização do firmware Reposição das definições de fábrica

Definições de WiFi

Definições gerais Definições de rede Definições de Bluetooth

Descrição da impressora MyPrinter01

Tipo de endereço de rede

☐ DHCP ☒ Static

Endereço IP \* 10 . 192 . 119 . 65

Máscara de sub-rede \* 255 . 255 . 255 . 0

Gateway predefinido \* 10 . 192 . 119 . 1

Servidor DNS (principal) 172 . 22 . 40 . 180

Servidor DNS (secundário) 172 . 22 . 2 . 180

\* = Campos obrigatórios

OK Avbryt Aplicar Hjelp



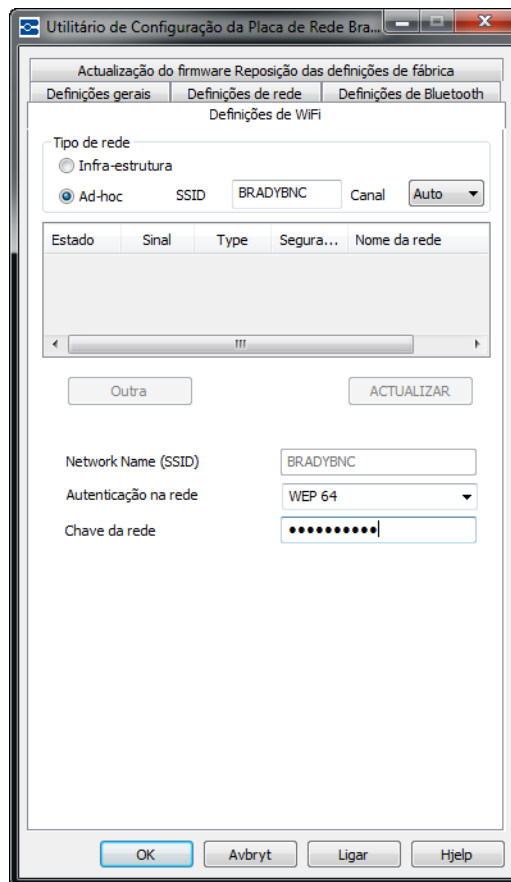
## WiFi-innstillinger

Kategorien WiFi-innstillinger viser:

- Nettverkstype – Infrastruktur kontra Ad hoc.
- Nettverket som for tiden er tilkoblet.
- Sikkerhetsinnstillingene til nettverket som for tiden er tilkoblet.

Infrastrukturen velges når skriveren er koblet til PC-en med en ruter. Dette er det som oftest er tilfellet.

1. Velg Ad-hoc dersom du vil koble skriveren til PC direkte uten en ruter.
2. Angi SSID (nettverksnavn) og kanal.

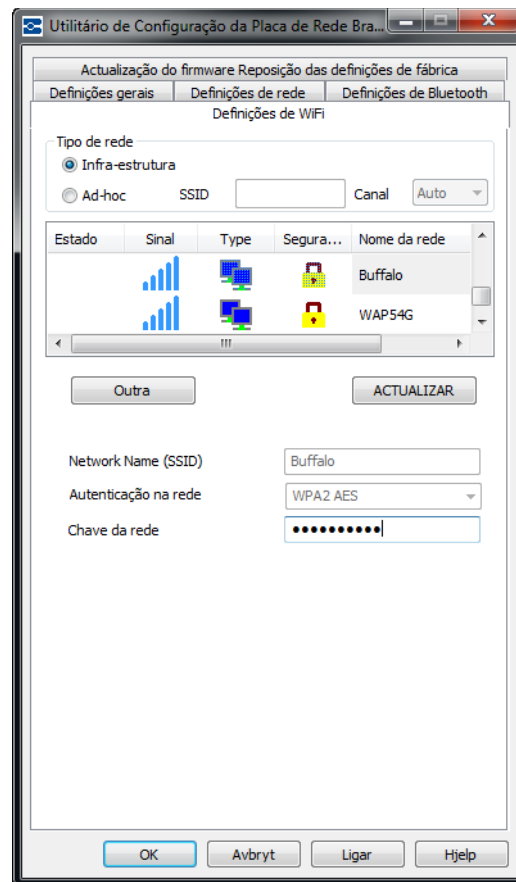


3. Klikk på et nettverk i listen som vises.

### Personlig nettverk

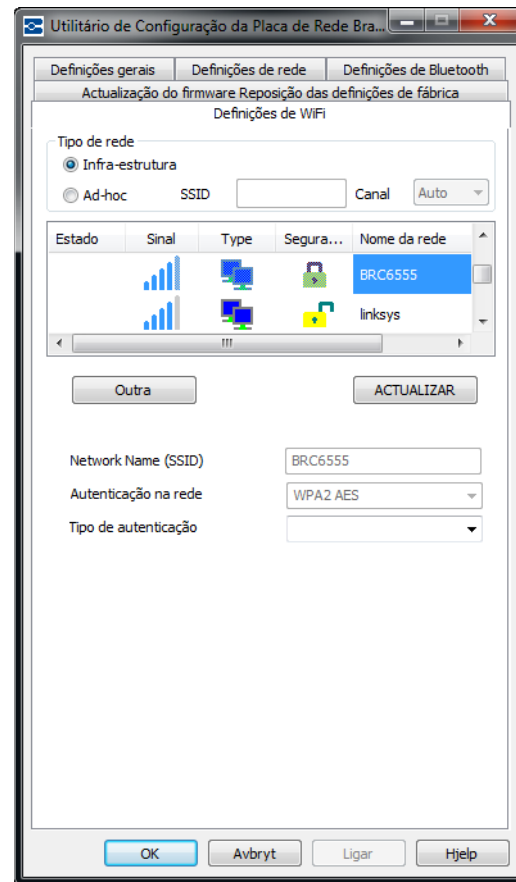
Hvis nettverket du valgte på listen, er et personlig nettverk, må du angi tilgangsnøkkelen for nettverket. Feltet Nettverksnavn (SSID) kan ikke redigeres.

4. Klikk på feltet Tilgangsnøkkel og angi tilgangsnøkkelen.
5. Klikk på Koble til når du er klar.

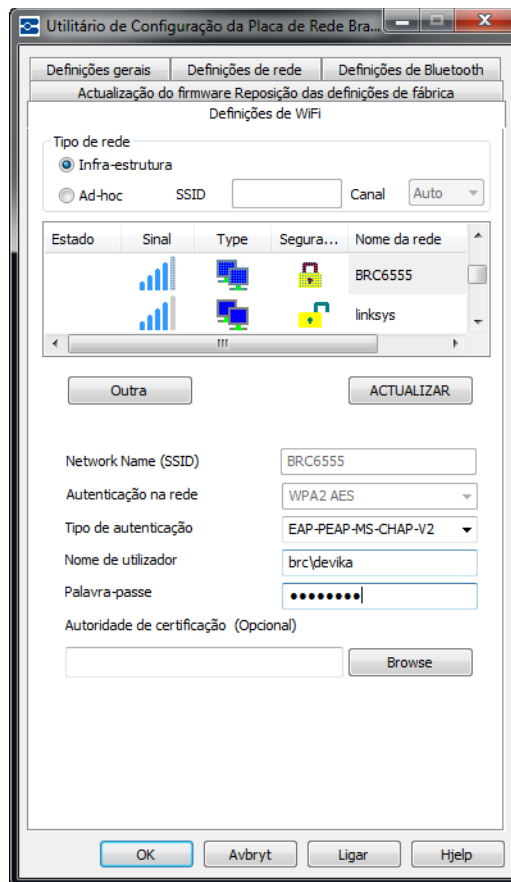


### Virksomhetsnettverk

Hvis nettverket du valgte på listen, er et virksomhetsnettverk, må du angi autentiseringstype, brukernavn og passord. Feltet Nettverksnavn (SSID) og feltet Nettverksautentisering kan ikke redigeres.



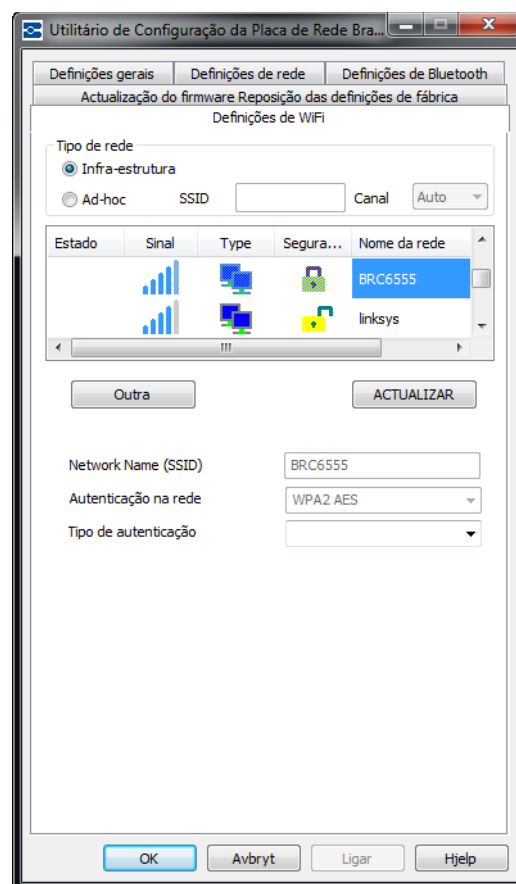
6. Klikk på pil ned i feltet Autentiseringstype, og velg riktig autentiseringstype.
7. Klikk på feltet *Brukernavn* og angi brukernavnet.
8. Klikk på feltet *Passord* og angi passordet.
9. Klikk på Koble til når du er klar.



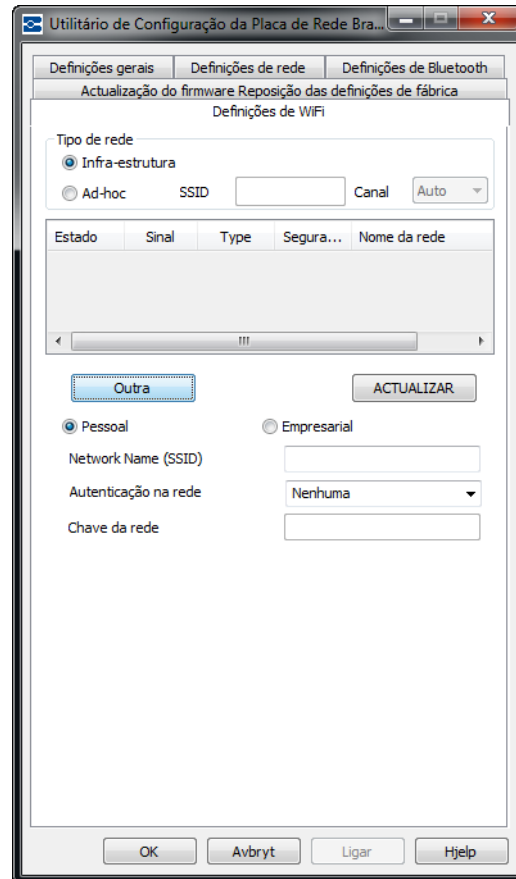
### Definere andre nettverk

Slik definerer du et annet nettverk som ikke er på listen:

10. Klikk på Annet-knappen .



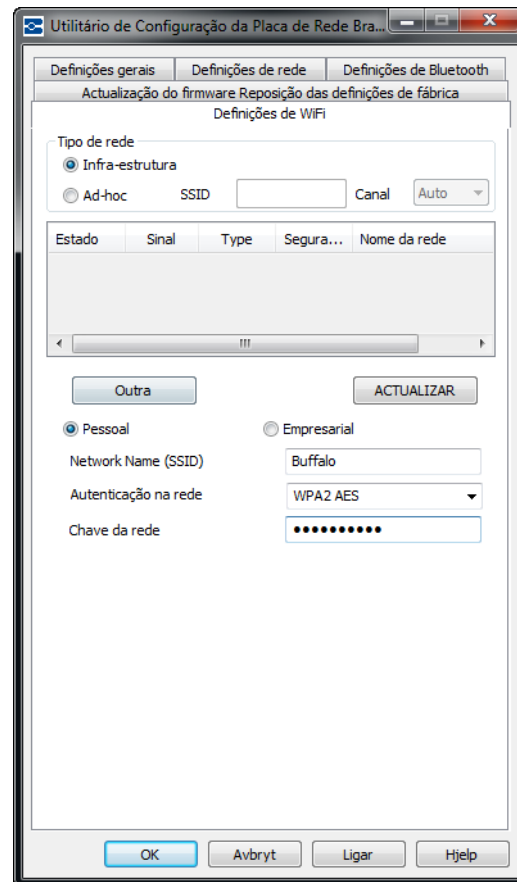
11. På skjermen for *Annet* nettverk klikker du på radioknappen – Personlig eller Virksomhet – som best beskriver dette nettverket.



### Personlig nettverk

1. Hvis du klikker på Personlig nettverk, angir du nettverksnavnet (SSID).
2. Klikk på pil ned og velg *Autentiseringstype*. (Hvis du ikke vet autentiseringstypen, kan du høre med nettverksadministratoren.)

Avhengig av valgt nettverksautentisering må du kanskje oppgi en nettverksnøkkel. Se tabellene for autentiseringsmetoder og -typer på [side 14](#) for mer informasjon.



### Virksomhetsnettverk

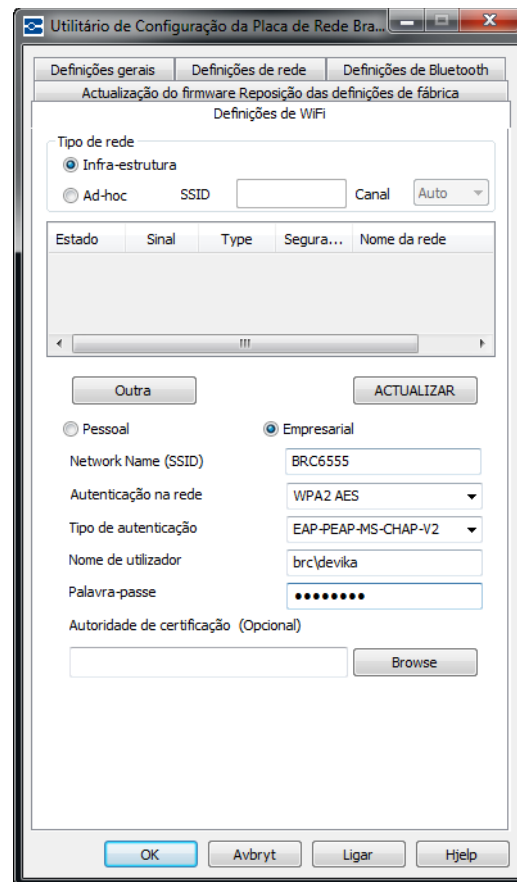
Hvis du klikker på Virksomhetsnettverk:

3. Angi nettverksnavnet (SSID).
4. I feltet *Nettverksautentisering* klikker du på pil ned og velger autentiseringsmetoden.
5. I feltet *Autentiseringstype* klikker du på pil ned og velger *autentiseringstypen*. (Hvis du ikke vet autentiseringstypen, kan du høre med nettverksadministratoren.)
6. Angi brukernavn og passord om aktuelt. Snakk med nettverksadministratoren for å finne ut om du allerede har fått et brukernavn.

---

**Merk:** Avhengig av valgt autentiseringstype må du kanskje oppgi brukernavn, passord og sertifikater. Se autentiseringstabellen på [side 14](#) for mer informasjon.

---



7. Klikk på Koble til for å godta endringene.



## Bluetooth-innstillinger

Kategorien Bluetooth-innstillinger viser det generiske navnet til Bluetooth-konfigurasjonen som er installert på skriveren. Det forhåndsvalgte navnet er Brady. Det forhåndsinnstilte navnet og den forhåndsinnstilte PIN-koden kan endres i denne kategorien.

### Navn

Slik endres navnet:

1. Uthev det forhåndsvalgte navnet i feltet *Enhetsnavn*. Angi deretter et nytt navn direkte over den uthevede teksten.

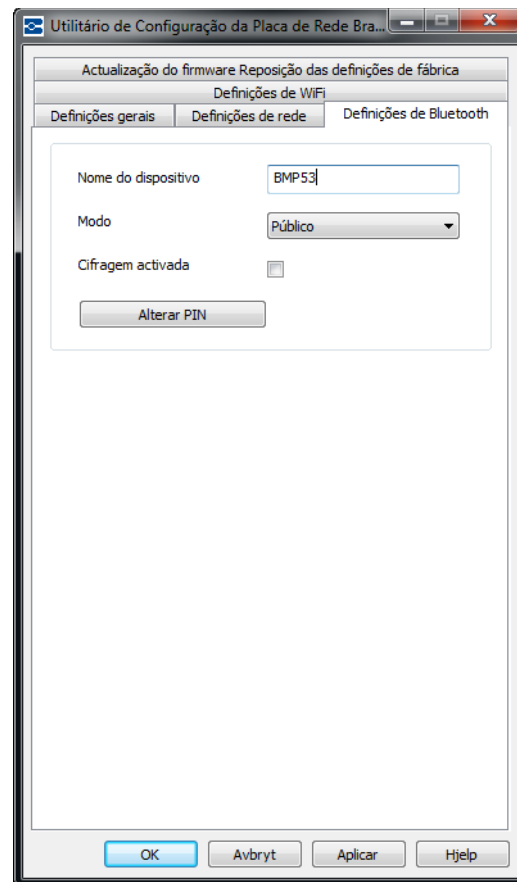
### Modus

1. Klikk på nedpilen i feltet *Modus* for å velge driftsmodusen til Bluetooth-tilkoblingen.

**Offentlig** - Brady-nettverkskortet kan oppdages og tilkobles av en hvilken som helst Bluetooth-anordning.

**Privat** - Brady-nettverkskortet kan ikke oppdages av nye Bluetooth-anordninger, men det kan tilkobles.

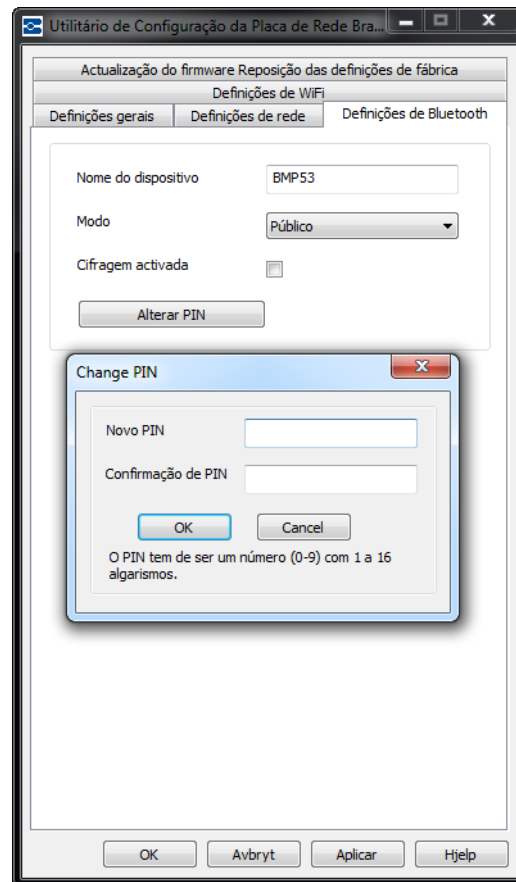
**Av** - Brady-nettverkskortet kan ikke oppdages eller tilkobles.



### PIN-kode

Bluetooth-tilkoblingen krever en PIN-kode. Den forhåndsinnstilte PIN-koden er 0000. Dersom PIN-koden skal endres:

1. Klikk på knappen Endre PIN.
2. I felt *Ny PIN*:, angi den nye PIN-koden.
3. I felt *Bekreft PIN*:, angi den nye PIN-koden igjen.
4. Klikk på OK for å godta den nye PIN-koden og gå tilbake til kategorien Bluetooth-innstillinger.
5. Klikk på OK igjen for å godta endringene og avslutte dialogboksen.

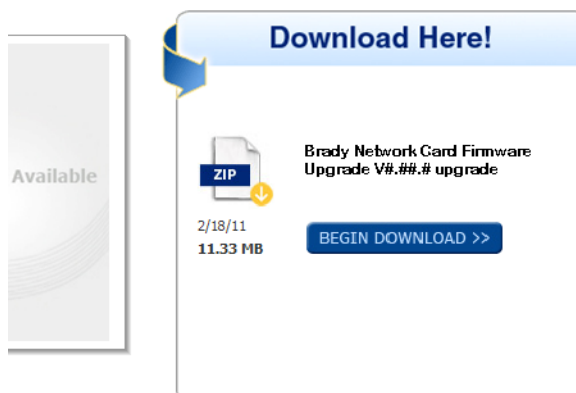
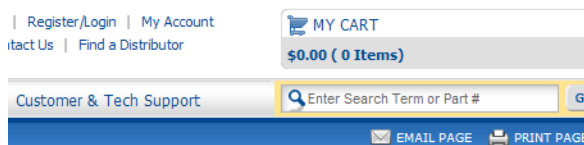
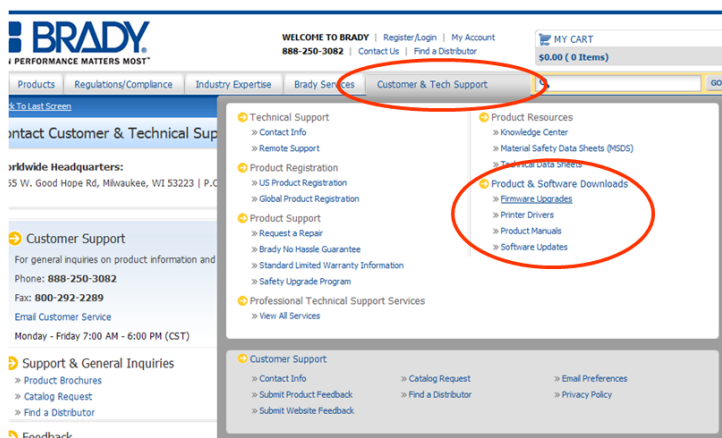


## Fastvareoppgradering/Fabrikktilbakestilling

Når nye versjoner av fastvaren blir gjort tilgjengelige, kan Brady-nettverkskortet oppgraderes i kategorien Fastvareoppgradering/Fabrikktilbakestilling i konfigurasjonsverktøyet.

Slik oppgraderes fastvaren:

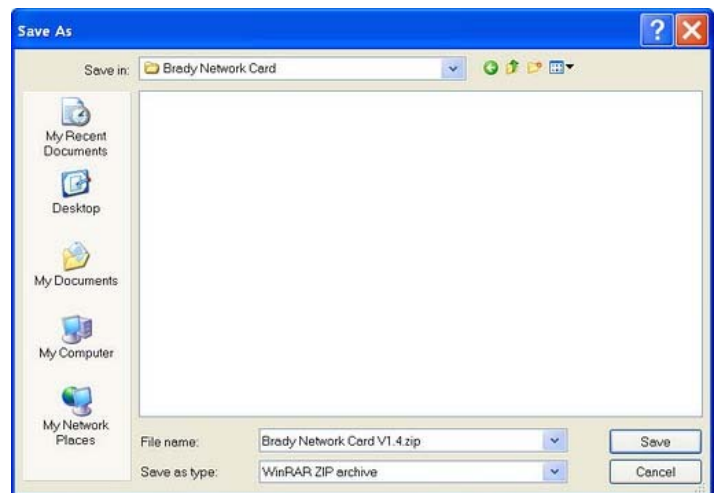
1. Gå til Bradys nettsted på [www.bradyid.com](http://www.bradyid.com).
2. Klikk på Kunde- og teknisk støtte.
3. Klikk på Fastvareoppgradering for Brady-nettverkskort under Produkt- og programvarenedlastinger.
4. Klikk på oppgraderingen som skal lastes ned, fra listen, og klikk deretter på **BEGIN DOWNLOAD >>**-knappen.



5. Klikk på lagre på skjermen Filnedlasting.



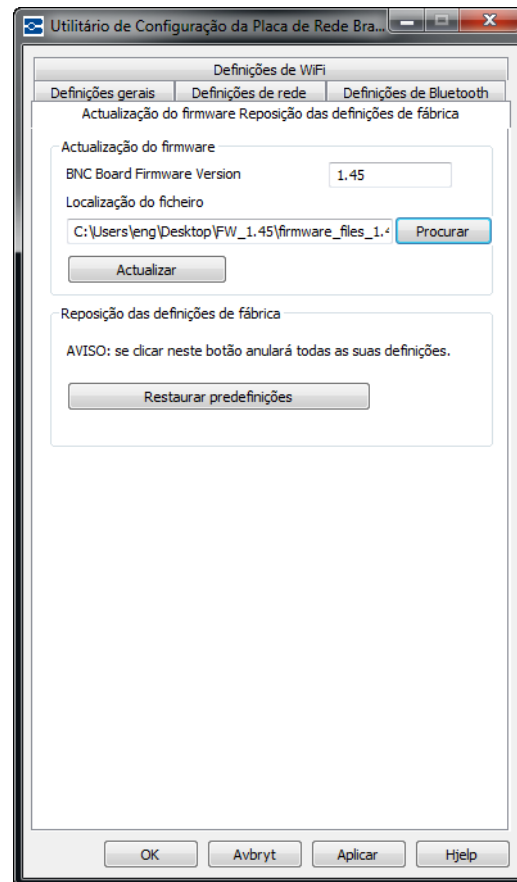
6. Bruk standard Windows-prosedyrer for å bestemme hvilken filkatalog som de nedlastede dataene skal lagres i.



7. Klikk på **Bla gjennom**-knappen i kategorien Fastvareoppgradering på skjermen Konfigurasjonsverktøy.
8. Finn filkatalogen der ZIP-filen ble lagret, og klikk deretter på **Åpne**.
9. Klikk på **Oppgrader**-knappen i kategorien Fastvareoppgradering/Fabrikktilbakestilling.


Den oppgraderte programinformasjonen installeres automatisk på systemet.

10. Klikk på OK for å godta endringene og avslutte dialogboksen.



## Fabrikktilbakestilling

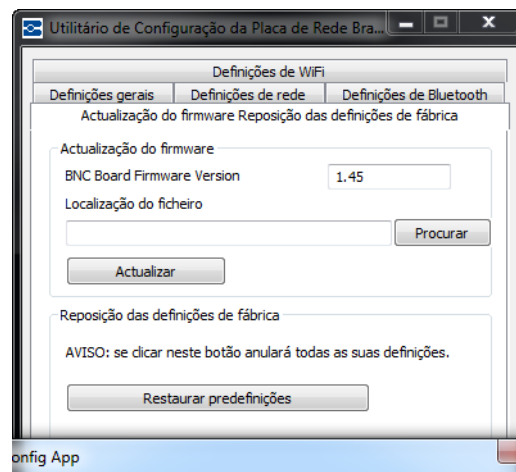
Slik tilbakestilles alle innstillingene til de opprinnelige fabrikkinnstillingene (standarder):


1. Klikk på -knappen i kategorien Fastvareoppgradering/  
Fabrikktilbakestilling på skjermen Konfigurasjonsverktøy.

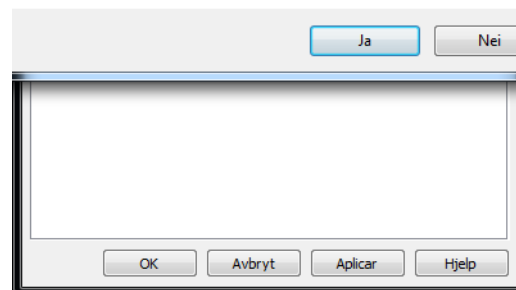
En varselsmelding vises som indikerer at alle innstillinger som er definert tidligere, er blitt fjernet.

2. Klikk på Ja i varselsmeldingen hvis du vil fortsette med tilbakestillingen.
3. Klikk på OK i dialogboksen for å akseptere endringene og avslutte dialogboksen.

Tidligere innstillinger fjernes. Nå kan nettverket og kortkonfigurasjonene konfigureres på nytt.



 A reposição das definições de fábrica causará a perda de todos os trabalhos de impressão actuais. Pretende continuar?







**Brady Worldwide Inc.**

6555 West Good Hope Road

Milwaukee, WI 53223 USA

Telefon: 414-358-6600 i USA

Faks: 414-438-6958

**Nettsteder**

**USA:** [www.bradyid.com](http://www.bradyid.com)

**Canada:** [www.bradycanada.com](http://www.bradycanada.com)

**Mexico:** [www.bradylatinamerica.com](http://www.bradylatinamerica.com)

**Asia:** [www.bradycorp.com](http://www.bradycorp.com)

**Europa:** [www.bradyeurope.com](http://www.bradyeurope.com)