

Copyright Notice

Portions of the Brady Network Card are based on the following software libraries.

BlueZ - Bluetooth protocol stack for Linux

Copyright (C) 2000-2001 Qualcomm Incorporated

Copyright (C) 2002-2003 Maxim Krasnyansky <maxk@qualcomm.com>

Copyright (C) 2002-2006 Marcel Holtmann marcel@holtmann.org

WPA Supplicant

Copyright (c) 2003-2006, Jouni Malinen <jkmaline@cc.hut.fi> and contributors All Rights Reserved.

Perl Kit, Version 5

Copyright (C) 1993, 1994, 1995, 1996, 1997, 1998, 1999, 2000, 2001, 2002, 2003, 2004, 2005, 2006 by Larry Wall and others

zlib/libpng

Copyright (C) 1995-2004 Jean-loup Gailly and Mark Adler.

Open Source Licensing Information

The Brady Network Card contains open source software. Given our obligations under these licenses, we make the following copyright notices and license terms available to you. For more information, please visit our open source licensing website at <http://www.bradyid.com/opensource>.

A. The Brady Network Card contains open source software licensed under Version 2 of the GNU General Public License.

GNU GENERAL PUBLIC LICENSE

Version 2, June 1991

Copyright (C) 1989, 1991 Free Software Foundation, Inc., 51 Franklin Street, Fifth Floor, Boston, MA 02110-1301 USA Everyone is permitted to copy and distribute verbatim copies of this license document, but changing it is not allowed.

Preamble

The licenses for most software are designed to take away your freedom to share and change it. By contrast, the GNU General Public License is intended to guarantee your freedom to share and change free software--to make sure the software is free for all its users. This General Public License applies to most of the Free Software Foundation's software and to any other program whose authors commit to using it. (Some other Free Software Foundation software is covered by the GNU Lesser General Public License instead.) You can apply it to your programs, too.

When we speak of free software, we are referring to freedom, not price. Our General Public Licenses are designed to make sure that you have the freedom to distribute copies of free software (and charge for this service if you wish), that you receive source code or can get it if you want it, that you can change the software or use pieces of it in new free programs; and that you know you can do these things.

To protect your rights, we need to make restrictions that forbid anyone to deny you these rights or to ask you to surrender the rights. These restrictions translate to certain responsibilities for you if you distribute copies of the software, or if you modify it.

For example, if you distribute copies of such a program, whether gratis or for a fee, you must give the recipients all the rights that you have. You must make sure that they, too, receive or can get the source code. And you must show them these terms so they know their rights.

We protect your rights with two steps: (1) copyright the software, and (2) offer you this license which gives you legal permission to copy, distribute and/or modify the software.

Also, for each author's protection and ours, we want to make certain that everyone understands that there is no warranty for this free software. If the software is modified by someone else and passed on, we want its recipients to know that what they have is not the original, so that any problems introduced by others will not reflect on the original authors' reputations.

Finally, any free program is threatened constantly by software patents. We wish to avoid the danger that redistributors of a free program will individually obtain patent licenses, in effect making the program proprietary. To prevent this, we have made it clear that any patent must be licensed for everyone's free use or not licensed at all.

The precise terms and conditions for copying, distribution and modification follow.

GNU GENERAL PUBLIC LICENSE
TERMS AND CONDITIONS FOR COPYING, DISTRIBUTION AND MODIFICATION

0. This License applies to any program or other work which contains a notice placed by the copyright holder saying it may be distributed under the terms of this General Public License. The "Program", below, refers to any such program or work, and a "work based on the Program" means either the Program or any derivative work under copyright law:

that is to say, a work containing the Program or a portion of it, either verbatim or with modifications and/or translated into another language. (Hereinafter, translation is included without limitation in the term "modification".) Each licensee is addressed as "you".

Activities other than copying, distribution and modification are not covered by this License; they are outside its scope. The act of running the Program is not restricted, and the output from the Program is covered only if its contents constitute a work based on the Program (independent of having been made by running the Program). Whether that is true depends on what the Program does.

1. You may copy and distribute verbatim copies of the Program's source code as you receive it, in any medium, provided that you conspicuously and appropriately publish on each copy an appropriate copyright notice and disclaimer of warranty; keep intact all the notices that refer to this License and to the absence of any warranty; and give any other recipients of the Program a copy of this License along with the Program.

You may charge a fee for the physical act of transferring a copy, and you may at your option offer warranty protection in exchange for a fee.

2. You may modify your copy or copies of the Program or any portion of it, thus forming a work based on the Program, and copy and distribute such modifications or work under the terms of Section 1 above, provided that you also meet all of these conditions:

a) You must cause the modified files to carry prominent notices stating that you changed the files and the date of any change.

b) You must cause any work that you distribute or publish, that in whole or in part contains or is derived from the Program or any part thereof, to be licensed as a whole at no charge to all third parties under the terms of this License.

c) If the modified program normally reads commands interactively when run, you must cause it, when started running for such interactive use in the most ordinary way, to print or display an announcement including an appropriate copyright notice and a notice that there is no warranty (or else, saying that you provide a warranty) and that users may redistribute the program under these conditions, and telling the user how to view a copy of this License. (Exception: if the Program itself is interactive but does not normally print such an announcement, your work based on the Program is not required to print an announcement.)

These requirements apply to the modified work as a whole. If identifiable sections of that work are not derived from the Program, and can be reasonably considered independent and separate works in themselves, then this License, and its terms, do not apply to those sections when you distribute them as separate works. But when you distribute the same sections as part of a whole which is a work based on the Program, the distribution of the whole must be on the terms of this License, whose permissions for other licensees extend to the entire whole, and thus to each and every part regardless of who wrote it.

Thus, it is not the intent of this section to claim rights or contest your rights to work written entirely by you; rather, the intent is to exercise the right to control the distribution of derivative or collective works based on the Program.

In addition, mere aggregation of another work not based on the Program with the Program (or with a work based on the Program) on a volume of a storage or distribution medium does not bring the other work under the scope of this License.

3. You may copy and distribute the Program (or a work based on it, under Section 2) in object code or executable form under the terms of Sections 1 and 2 above provided that you also do one of the following:

a) Accompany it with the complete corresponding machine-readable source code, which must be distributed under the terms of Sections 1 and 2 above on a medium customarily used for software interchange; or,

b) Accompany it with a written offer, valid for at least three years, to give any third party, for a charge no more than your cost of physically performing source distribution, a complete machine-readable copy of the corresponding source code, to be distributed under the terms of Sections 1 and 2 above on a medium customarily used for software interchange; or,

c) Accompany it with the information you received as to the offer to distribute corresponding source code. (This alternative is allowed only for noncommercial distribution and only if you received the program in object code or executable form with such an offer, in accord with Subsection b above.)

The source code for a work means the preferred form of the work for making modifications to it. For an executable work, complete source code means all the source code for all modules it contains, plus any associated interface definition files, plus the scripts used to control compilation and installation of the executable. However, as a special exception, the source code distributed need not include anything that is normally distributed (in either source or binary form) with the major components (compiler, kernel, and so on) of the operating system on which the executable runs, unless that component itself accompanies the executable.

If distribution of executable or object code is made by offering access to copy from a designated place, then offering equivalent access to copy the source code from the same place counts as distribution of the source code, even though third parties are not compelled to copy the source along with the object code.

4. You may not copy, modify, sublicense, or distribute the Program except as expressly provided under this License. Any attempt otherwise to copy, modify, sublicense or distribute the Program is void, and will automatically terminate your rights under this License. However, parties who have received copies, or rights, from you under this License will not have their licenses terminated so long as such parties remain in full compliance.

5. You are not required to accept this License, since you have not signed it. However, nothing else grants you permission to modify or distribute the Program or its derivative works. These actions are prohibited by law if you do not accept this License. Therefore, by modifying or distributing the Program (or any work based on the Program), you indicate your acceptance of this License to do so, and all its terms and conditions for copying, distributing or modifying the Program or works based on it.

6. Each time you redistribute the Program (or any work based on the Program), the recipient automatically receives a license from the original licensor to copy, distribute or modify the Program subject to these terms and conditions. You may not impose any further restrictions on the recipients' exercise of the rights granted herein. You are not responsible for enforcing compliance by third parties to this License.

7. If, as a consequence of a court judgment or allegation of patent infringement or for any other reason (not limited to patent issues), conditions are imposed on you (whether by court order, agreement or otherwise) that contradict the conditions of this License, they do not excuse you from the conditions of this License. If you cannot distribute so as to satisfy simultaneously your obligations under this License and any other pertinent obligations, then as a consequence you may not distribute the Program at all. For example, if a patent license would not permit royalty-free redistribution of the Program by all those who receive copies directly or indirectly through you, then the only way you could satisfy both it and this License would be to refrain entirely from distribution of the Program.

If any portion of this section is held invalid or unenforceable under any particular circumstance, the balance of the section is intended to apply and the section as a whole is intended to apply in other circumstances.

It is not the purpose of this section to induce you to infringe any patents or other property right claims or to contest validity of any such claims; this section has the sole purpose of protecting the integrity of the free software distribution system, which is implemented by public license practices. Many people have made generous contributions to the wide range of software distributed through that system in reliance on consistent application of that system; it is up to the author/donor to decide if he or she is willing to distribute software through any other system and a licensee cannot impose that choice.

This section is intended to make thoroughly clear what is believed to be a consequence of the rest of this License.

8. If the distribution and/or use of the Program is restricted in certain countries either by patents or by copyrighted interfaces, the original copyright holder who places the Program under this License may add an explicit geographical distribution limitation excluding those countries, so that distribution is permitted only in or among countries not thus excluded. In such case, this License incorporates the limitation as if written in the body of this License.

9. The Free Software Foundation may publish revised and/or new versions of the General Public License from time to time. Such new versions will be similar in spirit to the present version, but may differ in detail to address new problems or concerns.

Each version is given a distinguishing version number. If the Program specifies a version number of this License which applies to it and "any later version", you have the option of following the terms and conditions either of that version or of any later version published by the Free Software Foundation. If the Program does not specify a version number of this License, you may choose any version ever published by the Free Software Foundation.

10. If you wish to incorporate parts of the Program into other free programs whose distribution conditions are different, write to the author to ask for permission. For software which is copyrighted by the Free Software Foundation, write to the Free Software Foundation; we sometimes make exceptions for this. Our decision will be guided by the two goals of preserving the free status of all derivatives of our free software and of promoting the sharing and reuse of software generally.

NO WARRANTY

11. BECAUSE THE PROGRAM IS LICENSED FREE OF CHARGE, THERE IS NO WARRANTY FOR THE PROGRAM, TO THE EXTENT PERMITTED BY APPLICABLE LAW. EXCEPT WHEN OTHERWISE STATED IN WRITING THE COPYRIGHT HOLDERS AND/OR OTHER PARTIES PROVIDE THE PROGRAM "AS IS" WITHOUT WARRANTY OF ANY KIND, EITHER EXPRESSED OR IMPLIED, INCLUDING, BUT NOT LIMITED TO, THE IMPLIED WARRANTIES OF MERCHANTABILITY AND FITNESS FOR A PARTICULAR PURPOSE. THE ENTIRE RISK AS TO THE QUALITY AND PERFORMANCE OF THE PROGRAM IS WITH YOU. SHOULD THE PROGRAM PROVE DEFECTIVE, YOU ASSUME THE COST OF ALL NECESSARY SERVICING, REPAIR OR CORRECTION.

12. IN NO EVENT UNLESS REQUIRED BY APPLICABLE LAW OR AGREED TO IN WRITING WILL ANY COPYRIGHT HOLDER, OR ANY OTHER PARTY WHO MAY MODIFY AND/OR REDISTRIBUTE THE PROGRAM AS PERMITTED ABOVE, BE LIABLE TO YOU FOR DAMAGES, INCLUDING ANY GENERAL, SPECIAL, INCIDENTAL OR CONSEQUENTIAL DAMAGES ARISING OUT OF THE USE OR INABILITY TO USE THE PROGRAM (INCLUDING BUT NOT LIMITED TO LOSS OF DATA OR DATA BEING RENDERED INACCURATE OR LOSSES SUSTAINED BY YOU OR THIRD PARTIES OR A FAILURE OF THE PROGRAM TO OPERATE WITH ANY OTHER PROGRAMS), EVEN IF SUCH HOLDER OR OTHER PARTY HAS BEEN ADVISED OF THE POSSIBILITY OF SUCH DAMAGES.

END OF TERMS AND CONDITIONS

B. The Brady Network Card contains open source software licensed under Version 2.1 of the GNU Lesser General Public License.

GNU LESSER GENERAL PUBLIC LICENSE

Version 2.1, February 1999

Copyright (C) 1991, 1999 Free Software Foundation, Inc. 51 Franklin St, Fifth Floor, Boston, MA 02110-1301 USA Everyone is permitted to copy and distribute verbatim copies of this license document, but changing it is not allowed.

[This is the first released version of the Lesser GPL. It also counts as the successor of the GNU Library Public License, version 2, hence the version number 2.1.]

Preamble

The licenses for most software are designed to take away your freedom to share and change it. By contrast, the GNU General Public Licenses are intended to guarantee your freedom to share and change free software--to make sure the software is free for all its users.

This license, the Lesser General Public License, applies to some specially designated software packages--typically libraries--of the Free Software Foundation and other authors who decide to use it. You can use it too, but we suggest you first think carefully about whether this license or the ordinary General Public License is the better strategy to use in any particular case, based on the explanations below.

When we speak of free software, we are referring to freedom of use, not price. Our General Public Licenses are designed to make sure that you have the freedom to distribute copies of free software (and charge for this service if you wish); that you receive source code or can get it if you want it; that you can change the software and use pieces of it in new free programs; and that you are informed that you can do these things.

To protect your rights, we need to make restrictions that forbid distributors to deny you these rights or to ask you to surrender these rights. These restrictions translate to certain responsibilities for you if you distribute copies of the library or if you modify it.

For example, if you distribute copies of the library, whether gratis or for a fee, you must give the recipients all the rights that we gave you. You must make sure that they, too, receive or can get the source code. If you link other code with the library, you must provide complete object files to the recipients, so that they can relink them with the library after making changes to the library and recompiling it. And you must show them these terms so they know their rights.

We protect your rights with a two-step method: (1) we copyright the library, and (2) we offer you this license, which gives you legal permission to copy, distribute and/or modify the library.

To protect each distributor, we want to make it very clear that there is no warranty for the free library. Also, if the library is modified by someone else and passed on, the recipients should know that what they have is not the original version, so that the original author's reputation will not be affected by problems that might be introduced by others. Finally, software patents pose a constant threat to the existence of any free program. We wish to make sure that a company cannot effectively restrict the users of a free program by obtaining a restrictive license from a patent holder. Therefore, we insist that any patent license obtained for a version of the library must be consistent with the full freedom of use specified in this license.

Most GNU software, including some libraries, is covered by the ordinary GNU General Public License. This license, the GNU Lesser General Public License, applies to certain designated libraries, and is quite different from the ordinary General Public License. We use this license for certain libraries in order to permit linking those libraries into non-free programs.

When a program is linked with a library, whether statically or using a shared library, the combination of the two is legally speaking a combined work, a derivative of the original library. The ordinary General Public License therefore permits such linking only if the entire combination fits its criteria of freedom. The Lesser General Public License permits more lax criteria for linking other code with the library.

We call this license the "Lesser" General Public License because it does Less to protect the user's freedom than the ordinary General Public License. It also provides other free software developers Less of an advantage over competing non-free programs. These disadvantages are the reason we use the ordinary General Public License for many libraries. However, the Lesser license provides advantages in certain special circumstances.

For example, on rare occasions, there may be a special need to encourage the widest possible use of a certain library, so that it becomes a de-facto standard. To achieve this, non-free programs must be allowed to use the library. A more frequent case is that a free library does the same job as widely used non-free libraries. In this case, there is little to gain by limiting the free library to free software only, so we use the Lesser General Public License.

In other cases, permission to use a particular library in non-free programs enables a greater number of people to use a large body of free software. For example, permission to use the GNU C Library in non-free programs enables many more people to use the whole GNU operating system, as well as its variant, the GNU/Linux operating system.

Although the Lesser General Public License is Less protective of the users' freedom, it does ensure that the user of a program that is linked with the Library has the freedom and the wherewithal to run that program using a modified version of the Library.

The precise terms and conditions for copying, distribution and modification follow. Pay close attention to the difference between a "work based on the library" and a "work that uses the library". The former contains code derived from the library, whereas the latter must be combined with the library in order to run.

GNU LESSER GENERAL PUBLIC LICENSE TERMS AND CONDITIONS FOR COPYING, DISTRIBUTION AND MODIFICATION

0. This License Agreement applies to any software library or other program which contains a notice placed by the copyright holder or other authorized party saying it may be distributed under the terms of this Lesser General Public License (also called "this License"). Each licensee is addressed as "you".

A "library" means a collection of software functions and/or data prepared so as to be conveniently linked with application programs (which use some of those functions and data) to form executables.

The "Library", below, refers to any such software library or work which has been distributed under these terms. A "work based on the Library" means either the Library or any derivative work under copyright law: that is to say, a work containing the Library or a portion of it, either verbatim or with modifications and/or translated straightforwardly into another language. (Hereinafter, translation is included without limitation in the term "modification".)

"Source code" for a work means the preferred form of the work for making modifications to it. For a library, complete source code means all the source code for all modules it contains, plus any associated interface definition files, plus the scripts used to control compilation and installation of the library.

Activities other than copying, distribution and modification are not covered by this License; they are outside its scope. The act of running a program using the Library is not restricted, and output from such a program is covered only if its contents constitute a work based on the Library (independent of the use of the Library in a tool for writing it). Whether that is true depends on what the Library does and what the program that uses the Library does.

1. You may copy and distribute verbatim copies of the Library's complete source code as you receive it, in any medium, provided that you conspicuously and appropriately publish on each copy an appropriate copyright notice and disclaimer of warranty; keep intact all the notices that refer to this License and to the absence of any warranty; and distribute a copy of this License along with the Library.

You may charge a fee for the physical act of transferring a copy, and you may at your option offer warranty protection in exchange for a fee.

2. You may modify your copy or copies of the Library or any portion of it, thus forming a work based on the Library, and copy and distribute such modifications or work under the terms of Section 1 above, provided that you also meet all of these conditions:

- a) The modified work must itself be a software library.
- b) You must cause the files modified to carry prominent notices stating that you changed the files and the date of any change.
- c) You must cause the whole of the work to be licensed at no charge to all third parties under the terms of this License.

d) If a facility in the modified Library refers to a function or a table of data to be supplied by an application program that uses the facility, other than as an argument passed when the facility is invoked, then you must make a good faith effort to ensure that, in the event an application does not supply such function or table, the facility still operates, and performs whatever part of its purpose remains meaningful.

(For example, a function in a library to compute square roots has a purpose that is entirely well-defined independent of the application. Therefore, Subsection 2d requires that any application-supplied function or table used by this function must be optional: if the application does not supply it, the square root function must still compute square roots.)

These requirements apply to the modified work as a whole. If identifiable sections of that work are not derived from the Library, and can be reasonably considered independent and separate works in themselves, then this License, and its terms, do not apply to those sections when you distribute them as separate works. But when you distribute the same sections as part of a whole which is a work based on the Library, the distribution of the whole must be on the terms of this License, whose permissions for other licensees extend to the entire whole, and thus to each and every part regardless of who wrote it.

Thus, it is not the intent of this section to claim rights or contest your rights to work written entirely by you; rather, the intent is to exercise the right to control the distribution of derivative or collective works based on the Library.

In addition, mere aggregation of another work not based on the Library with the Library (or with a work based on the Library) on a volume of a storage or distribution medium does not bring the other work under the scope of this License.

3. You may opt to apply the terms of the ordinary GNU General Public License instead of this License to a given copy of the Library. To do this, you must alter all the notices that refer to this License, so that they refer to the ordinary GNU General Public License, version 2, instead of to this License. (If a newer version than version 2 of the ordinary GNU General Public License has appeared, then you can specify that version instead if you wish.) Do not make any other change in these notices.

Once this change is made in a given copy, it is irreversible for that copy, so the ordinary GNU General Public License applies to all subsequent copies and derivative works made from that copy.

This option is useful when you wish to copy part of the code of the Library into a program that is not a library.

4. You may copy and distribute the Library (or a portion or derivative of it, under Section 2) in object code or executable form under the terms of Sections 1 and 2 above provided that you accompany it with the complete corresponding machine-readable source code, which must be distributed under the terms of Sections 1 and 2 above on a medium customarily used for software interchange.

If distribution of object code is made by offering access to copy from a designated place, then offering equivalent access to copy the source code from the same place satisfies the requirement to distribute the source code, even though third parties are not compelled to copy the source along with the object code.

5. A program that contains no derivative of any portion of the Library, but is designed to work with the Library by being compiled or linked with it, is called a "work that uses the Library". Such a work, in isolation, is not a derivative work of the Library, and therefore falls outside the scope of this License.

However, linking a "work that uses the Library" with the Library creates an executable that is a derivative of the Library (because it contains portions of the Library), rather than a "work that uses the library". The executable is therefore covered by this License. Section 6 states terms for distribution of such executables.

When a "work that uses the Library" uses material from a header file that is part of the Library, the object code for the work may be a derivative work of the Library even though the source code is not. Whether this is true is especially significant if the work can be linked without the Library, or if the work is itself a library. The threshold for this to be true is not precisely defined by law.

If such an object file uses only numerical parameters, data structure layouts and accessors, and small macros and small inline functions (ten lines or less in length), then the use of the object file is unrestricted, regardless of whether it is legally a derivative work. (Executables containing this object code plus portions of the Library will still fall under Section 6.)

Otherwise, if the work is a derivative of the Library, you may distribute the object code for the work under the terms of Section 6. Any executables containing that work also fall under Section 6, whether or not they are linked directly with the Library itself.

6. As an exception to the Sections above, you may also combine or link a "work that uses the Library" with the Library to produce a work containing portions of the Library, and distribute that work under terms of your choice, provided that the terms permit modification of the work for the customer's own use and reverse engineering for debugging such modifications.

You must give prominent notice with each copy of the work that the Library is used in it and that the Library and its use are covered by this License. You must supply a copy of this License. If the work during execution displays copyright notices, you must include the copyright notice for the Library among them, as well as a reference directing the user to the copy of this License. Also, you must do one of these things:

- a) Accompany the work with the complete corresponding machine-readable source code for the Library including whatever changes were used in the work (which must be distributed under Sections 1 and 2 above); and, if the work is an executable linked with the Library, with the complete machine-readable "work that uses the Library", as object code and/or source code, so that the user can modify the Library and then relink to produce a modified executable containing the modified Library. (It is understood that the user who changes the contents of definitions files in the Library will not necessarily be able to recompile the application to use the modified definitions.)
- b) Use a suitable shared library mechanism for linking with the Library. A suitable mechanism is one that (1) uses at run time a copy of the library already present on the user's computer system, rather than copying library functions into the executable, and (2) will operate properly with a modified version of the library, if the user installs one, as long as the modified version is interface-compatible with the version that the work was made with.
- c) Accompany the work with a written offer, valid for at least three years, to give the same user the materials specified in Subsection 6a, above, for a charge no more than the cost of performing this distribution.
- d) If distribution of the work is made by offering access to copy from a designated place, offer equivalent access to copy the above specified materials from the same place.
- e) Verify that the user has already received a copy of these materials or that you have already sent this user a copy.

For an executable, the required form of the "work that uses the Library" must include any data and utility programs needed for reproducing the executable from it. However, as a special exception, the materials to be distributed need not include anything that is normally distributed (in either source or binary form) with the major components (compiler, kernel, and so on) of the operating system on which the executable runs, unless that component itself accompanies the executable.

It may happen that this requirement contradicts the license restrictions of other proprietary libraries that do not normally accompany the operating system. Such a contradiction means you cannot use both them and the Library together in an executable that you distribute.

7. You may place library facilities that are a work based on the Library side-by-side in a single library together with other library facilities not covered by this License, and distribute such a combined library, provided that the separate distribution of the work based on the Library and of the other library facilities is otherwise permitted, and provided that you do these two things:

a) Accompany the combined library with a copy of the same work based on the Library, uncombined with any other library facilities. This must be distributed under the terms of the Sections above.

b) Give prominent notice with the combined library of the fact that part of it is a work based on the Library, and explaining where to find the accompanying uncombined form of the same work.

8. You may not copy, modify, sublicense, link with, or distribute the Library except as expressly provided under this License. Any attempt otherwise to copy, modify, sublicense, link with, or distribute the Library is void, and will automatically terminate your rights under this License. However, parties who have received copies, or rights, from you under this License will not have their licenses terminated so long as such parties remain in full compliance.

9. You are not required to accept this License, since you have not signed it. However, nothing else grants you permission to modify or distribute the Library or its derivative works. These actions are prohibited by law if you do not accept this License. Therefore, by modifying or distributing the Library (or any work based on the Library), you indicate your acceptance of this License to do so, and all its terms and conditions for copying, distributing or modifying the Library or works based on it.

10. Each time you redistribute the Library (or any work based on the Library), the recipient automatically receives a license from the original licensor to copy, distribute, link with or modify the Library subject to these terms and conditions. You may not impose any further restrictions on the recipients' exercise of the rights granted herein. You are not responsible for enforcing compliance by third parties with this License.

11. If, as a consequence of a court judgment or allegation of patent infringement or for any other reason (not limited to patent issues), conditions are imposed on you (whether by court order, agreement or otherwise) that contradict the conditions of this License, they do not excuse you from the conditions of this License. If you cannot distribute so as to satisfy simultaneously your obligations under this License and any other pertinent obligations, then as a consequence you may not distribute the Library at all. For example, if a patent license would not permit royalty-free redistribution of the Library by all those who receive copies directly or indirectly through you, then the only way you could satisfy both it and this License would be to refrain entirely from distribution of the Library.

If any portion of this section is held invalid or unenforceable under any particular circumstance, the balance of the section is intended to apply, and the section as a whole is intended to apply in other circumstances.

It is not the purpose of this section to induce you to infringe any patents or other property right claims or to contest validity of any such claims; this section has the sole purpose of protecting the integrity of the free software distribution system which is implemented by public license practices. Many people have made generous contributions to the wide range of software distributed through that system in reliance on consistent application of that system; it is up to the author/donor to decide if he or she is willing to distribute software through any other system and a licensee cannot impose that choice.

This section is intended to make thoroughly clear what is believed to be a consequence of the rest of this License.

12. If the distribution and/or use of the Library is restricted in certain countries either by patents or by copyrighted interfaces, the original copyright holder who places the Library under this License may add an explicit geographical distribution limitation excluding those countries, so that distribution is permitted only in or among countries not thus excluded. In such case, this License incorporates the limitation as if written in the body of this License.

13. The Free Software Foundation may publish revised and/or new versions of the Lesser General Public License from time to time. Such new versions will be similar in spirit to the present version, but may differ in detail to address new problems or concerns.

Each version is given a distinguishing version number. If the Library specifies a version number of this License which applies to it and "any later version", you have the option of following the terms and conditions either of that version or of any later version published by the Free Software Foundation. If the Library does not specify a license version number, you may choose any version ever published by the Free Software Foundation.

14. If you wish to incorporate parts of the Library into other free programs whose distribution conditions are incompatible with these, write to the author to ask for permission. For software which is copyrighted by the Free Software Foundation, write to the Free Software Foundation; we sometimes make exceptions for this. Our decision will be guided by the two goals of preserving the free status of all derivatives of our free software and of promoting the sharing and reuse of software generally.

NO WARRANTY

15. BECAUSE THE LIBRARY IS LICENSED FREE OF CHARGE, THERE IS NO WARRANTY FOR THE LIBRARY, TO THE EXTENT PERMITTED BY APPLICABLE LAW. EXCEPT WHEN OTHERWISE STATED IN WRITING THE COPYRIGHT HOLDERS AND/OR OTHER PARTIES PROVIDE THE LIBRARY "AS IS" WITHOUT WARRANTY OF ANY KIND, EITHER EXPRESSED OR IMPLIED, INCLUDING, BUT NOT LIMITED TO, THE IMPLIED WARRANTIES OF MERCHANTABILITY AND FITNESS FOR A PARTICULAR PURPOSE. THE ENTIRE RISK AS TO THE QUALITY AND PERFORMANCE OF THE LIBRARY IS WITH YOU. SHOULD THE LIBRARY PROVE DEFECTIVE, YOU ASSUME THE COST OF ALL NECESSARY SERVICING, REPAIR OR CORRECTION.

16. IN NO EVENT UNLESS REQUIRED BY APPLICABLE LAW OR AGREED TO IN WRITING WILL ANY COPYRIGHT HOLDER, OR ANY OTHER PARTY WHO MAY MODIFY AND/OR REDISTRIBUTE THE LIBRARY AS PERMITTED ABOVE, BE LIABLE TO YOU FOR DAMAGES, INCLUDING ANY GENERAL, SPECIAL, INCIDENTAL OR CONSEQUENTIAL DAMAGES ARISING OUT OF THE USE OR INABILITY TO USE THE LIBRARY (INCLUDING BUT NOT LIMITED TO LOSS OF DATA OR DATA BEING RENDERED INACCURATE OR LOSSES SUSTAINED BY YOU OR THIRD PARTIES OR A FAILURE OF THE LIBRARY TO OPERATE WITH ANY OTHER SOFTWARE), EVEN IF SUCH HOLDER OR OTHER PARTY HAS BEEN ADVISED OF THE POSSIBILITY OF SUCH DAMAGES.

C. The Brady Network Card contains open source software licensed under the OpenSSL License.

Copyright (c) 1998-2007 The OpenSSL Project. All rights reserved.

Redistribution and use in source and binary forms, with or without modification, are permitted provided that the following conditions are met:

1. Redistributions of source code must retain the above copyright notice, this list of conditions and the following disclaimer. 2. Redistributions in binary form must reproduce the above copyright notice, this list of conditions and the following disclaimer in the documentation and/or other materials provided with the distribution. 3. All advertising materials mentioning features or use of this software must display the following acknowledgment: "This product includes software developed by the OpenSSL Project for use in the OpenSSL Toolkit. (<http://www.openssl.org/>)" 4. The names "OpenSSL Toolkit" and "OpenSSL Project" must not be used to endorse or promote products derived from this software without prior written permission. For written permission, please contact openssl-core@openssl.org. 5. Products derived from this software may not be called "OpenSSL" nor may "OpenSSL" appear in their names without prior written permission of the OpenSSL Project. 6. Redistributions of any form whatsoever must retain the following acknowledgment: "This product includes software developed by the OpenSSL Project for use in the OpenSSL Toolkit (<http://www.openssl.org/>)"

THIS SOFTWARE IS PROVIDED BY THE OpenSSL PROJECT ``AS IS" AND ANY EXPRESSED OR IMPLIED WARRANTIES, INCLUDING, BUT NOT LIMITED TO, THE IMPLIED WARRANTIES OF MERCHANTABILITY AND FITNESS FOR A PARTICULAR PURPOSE ARE DISCLAIMED. IN NO EVENT SHALL THE OpenSSL PROJECT OR ITS CONTRIBUTORS BE LIABLE FOR ANY DIRECT, INDIRECT, INCIDENTAL, SPECIAL, EXEMPLARY, OR CONSEQUENTIAL DAMAGES (INCLUDING, BUT NOT LIMITED TO, PROCUREMENT OF SUBSTITUTE GOODS OR SERVICES; LOSS OF USE, DATA, OR PROFITS; OR BUSINESS INTERRUPTION HOWEVER CAUSED AND ON ANY THEORY OF LIABILITY, WHETHER IN CONTRACT, STRICT LIABILITY, OR TORT (INCLUDING NEGLIGENCE OR OTHERWISE) ARISING IN ANY WAY OUT OF THE USE OF THIS SOFTWARE, EVEN IF ADVISED OF THE POSSIBILITY OF SUCH DAMAGE.

D. This product includes cryptographic software written by Eric Young (eay@cryptsoft.com). This product includes software written by Tim Hudson (tjh@cryptsoft.com).

Copyright (C) 1995-1998 Eric Young (eay@cryptsoft.com)

All rights reserved. This package is an SSL implementation written by Eric Young (eay@cryptsoft.com).

The implementation was written so as to conform with Netscapes SSL. This library is free for commercial and non-commercial use as long as the following conditions are adhered to. The following conditions apply to all code found in this distribution, be it the RC4, RSA, lhash, DES, etc., code; not just the SSL code. The SSL documentation included with this distribution is covered by the same copyright terms except that the holder is Tim Hudson (tjh@cryptsoft.com). Copyright remains Eric Young's, and as such any Copyright notices in the code are not to be removed. If this package is used in a product, Eric Young should be given attribution as the author of the parts of the library used. This can be in the form of a textual message at program startup or in documentation (online or textual) provided with the package.

Redistribution and use in source and binary forms, with or without modification, are permitted provided that the following conditions are met:

1. Redistributions of source code must retain the copyright notice, this list of conditions and the following disclaimer.

2. Redistributions in binary form must reproduce the above copyright notice, this list of conditions and the following disclaimer in the documentation and/or other materials provided with the distribution. 3. All advertising materials mentioning features or use of this software must display the following acknowledgement:

"This product includes cryptographic software written by Eric Young (eay@cryptsoft.com)" The word 'cryptographic' can be left out if the routines from the library being used are not cryptographic related :-). 4. If you include any Windows specific code (or a derivative thereof) from the apps directory (application code) you must include an acknowledgement: "This product includes software written by Tim Hudson (tjh@cryptsoft.com)"

THIS SOFTWARE IS PROVIDED BY ERIC YOUNG ``AS IS" AND ANY EXPRESS OR IMPLIED WARRANTIES, INCLUDING, BUT NOT LIMITED TO, THE IMPLIED WARRANTIES OF MERCHANTABILITY AND FITNESS FOR A PARTICULAR PURPOSE ARE DISCLAIMED. IN NO EVENT SHALL THE AUTHOR OR CONTRIBUTORS BE LIABLE FOR ANY DIRECT, INDIRECT, INCIDENTAL, SPECIAL, EXEMPLARY, OR CONSEQUENTIAL DAMAGES (INCLUDING, BUT NOT LIMITED TO, PROCUREMENT OF SUBSTITUTE GOODS OR SERVICES; LOSS OF USE, DATA, OR PROFITS; OR BUSINESS INTERRUPTION) HOWEVER CAUSED AND ON ANY THEORY OF LIABILITY, WHETHER IN CONTRACT, STRICT LIABILITY, OR TORT (INCLUDING NEGLIGENCE OR OTHERWISE) ARISING IN ANY WAY OUT OF THE USE OF THIS SOFTWARE, EVEN IF ADVISED OF THE POSSIBILITY OF SUCH DAMAGE.

The license and distribution terms for any publically available version or derivative of this code cannot be changed. i.e. this code cannot simply be copied and put under another distribution license [including the GNU Public License.]

E. The Brady Network Card contains open source software licensed under the dropbear license.

Dropbear contains a number of components from different sources, hence there are a few licenses and authors involved. All licenses are fairly non-restrictive. The majority of code is written by Matt Johnston, under the license below. Portions of the client-mode work are (c) 2004 Mihnea Stoenescu, under the same license:

Copyright (c) 2002-2008 Matt Johnston. Portions copyright (c) 2004 Mihnea Stoenescu. All rights reserved.

Permission is hereby granted, free of charge, to any person obtaining a copy of this software and associated documentation files (the "Software"), to deal in the Software without restriction, including without limitation the rights to use, copy, modify, merge, publish, distribute, sublicense, and/or sell copies of the Software, and to permit persons to whom the Software is furnished to do so, subject to the following conditions:

The above copyright notice and this permission notice shall be included in all copies or substantial portions of the Software.

THE SOFTWARE IS PROVIDED "AS IS", WITHOUT WARRANTY OF ANY KIND, EXPRESS OR IMPLIED, INCLUDING BUT NOT LIMITED TO THE WARRANTIES OF MERCHANTABILITY, FITNESS FOR A PARTICULAR PURPOSE AND NONINFRINGEMENT. IN NO EVENT SHALL THE AUTHORS OR COPYRIGHT HOLDERS BE LIABLE FOR ANY CLAIM, DAMAGES OR OTHER LIABILITY, WHETHER IN AN ACTION OF CONTRACT, TORT OR OTHERWISE, ARISING FROM, OUT OF OR IN CONNECTION WITH THE SOFTWARE OR THE USE OR OTHER DEALINGS IN THE SOFTWARE.

LibTomCrypt and LibTomMath are written by Tom St Denis, and are Public Domain.

PuTTY is copyright 1997-2003 Simon Tatham.

Portions copyright Robert de Bath, Joris van Rantwijk, Delian Delchev, Andreas Schultz, Jeroen Massar, Wez Furlong, Nicolas Barry, Justin Bradford, and CORE SDI S.A.

Permission is hereby granted, free of charge, to any person obtaining a copy of this software and associated documentation files (the "Software"), to deal in the Software without restriction, including without limitation the rights to use, copy, modify, merge, publish, distribute, sublicense, and/or sell copies of the Software, and to permit persons to whom the Software is furnished to do so, subject to the following conditions:

The above copyright notice and this permission notice shall be included in all copies or substantial portions of the Software.

THE SOFTWARE IS PROVIDED "AS IS", WITHOUT WARRANTY OF ANY KIND, EXPRESS OR IMPLIED, INCLUDING BUT NOT LIMITED TO THE WARRANTIES OF MERCHANTABILITY, FITNESS FOR A PARTICULAR PURPOSE AND NONINFRINGEMENT. IN NO EVENT SHALL THE COPYRIGHT HOLDERS BE LIABLE FOR ANY CLAIM, DAMAGES OR OTHER LIABILITY, WHETHER IN AN ACTION OF CONTRACT, TORT OR OTHERWISE, ARISING FROM, OUT OF OR IN CONNECTION WITH THE SOFTWARE OR THE USE OR OTHER DEALINGS IN THE SOFTWARE.

F. The Brady Network Card contains open source software licensed under the Apache License Version 2.0.

The majority of the source code in the mDNSResponder project is licensed under the terms of the Apache License, Version 2.0, available from: <<http://www.apache.org/licenses/LICENSE-2.0>>

Apache License

Version 2.0, January 2004

<http://www.apache.org/licenses/>

TERMS AND CONDITIONS FOR USE, REPRODUCTION, AND DISTRIBUTION

1. Definitions.

"License" shall mean the terms and conditions for use, reproduction, and distribution as defined by Sections 1 through 9 of this document.

"Licensor" shall mean the copyright owner or entity authorized by the copyright owner that is granting the License.

"Legal Entity" shall mean the union of the acting entity and all other entities that control, are controlled by, or are under common control with that entity. For the purposes of this definition, "control" means (i) the power, direct or indirect, to cause the direction or management of such entity, whether by contract or otherwise, or (ii) ownership of fifty percent (50%) or more of the outstanding shares, or (iii) beneficial ownership of such entity.

"You" (or "Your") shall mean an individual or Legal Entity exercising permissions granted by this License.

"Source" form shall mean the preferred form for making modifications, including but not limited to software source code, documentation source, and configuration files.

"Object" form shall mean any form resulting from mechanical transformation or translation of a Source form, including but not limited to compiled object code, generated documentation, and conversions to other media types.

"Work" shall mean the work of authorship, whether in Source or Object form, made available under the License, as indicated by a copyright notice that is included in or attached to the work (an example is provided in the Appendix below).

"Derivative Works" shall mean any work, whether in Source or Object form, that is based on (or derived from) the Work and for which the editorial revisions, annotations, elaborations, or other modifications represent, as a whole, an original work of authorship. For the purposes of this License, Derivative Works shall not include works that remain separable from, or merely link (or bind by name) to the interfaces of, the Work and Derivative Works thereof.

"Contribution" shall mean any work of authorship, including the original version of the Work and any modifications or additions to that Work or Derivative Works thereof, that is intentionally submitted to Licensor for inclusion in the Work by the copyright owner or by an individual or Legal Entity authorized to submit on behalf of the copyright owner. For the purposes of this definition, "submitted" means any form of electronic, verbal, or written communication sent to the Licensor or its representatives, including but not limited to communication on electronic mailing lists, source code control systems, and issue tracking systems that are managed by, or on behalf of, the Licensor for the purpose of discussing and improving the Work, but excluding communication that is conspicuously marked or otherwise designated in writing by the copyright owner as "Not a Contribution."

"Contributor" shall mean Licensor and any individual or Legal Entity on behalf of whom a Contribution has been received by Licensor and subsequently incorporated within the Work.

2. Grant of Copyright License. Subject to the terms and conditions of this License, each Contributor hereby grants to You a perpetual, worldwide, non-exclusive, no-charge, royalty-free, irrevocable copyright license to reproduce, prepare Derivative Works of, publicly display, publicly perform, sublicense, and distribute the Work and such Derivative Works in Source or Object form.

3. Grant of Patent License. Subject to the terms and conditions of this License, each Contributor hereby grants to You a perpetual, worldwide, non-exclusive, no-charge, royalty-free, irrevocable (except as stated in this section) patent license to make, have made, use, offer to sell, sell, import, and otherwise transfer the Work, where such license applies only to those patent claims licensable by such Contributor that are necessarily infringed by their Contribution(s) alone or by combination of their Contribution(s) with the Work to which such Contribution(s) was submitted. If You institute patent litigation against any entity (including a cross-claim or counterclaim in a lawsuit) alleging that the Work or a Contribution incorporated within the Work constitutes direct or contributory patent infringement, then any patent licenses granted to You under this License for that Work shall terminate as of the date such litigation is filed.

4. Redistribution. You may reproduce and distribute copies of the Work or Derivative Works thereof in any medium, with or without modifications, and in Source or Object form, provided that You meet the following conditions:

You must give any other recipients of the Work or Derivative Works a copy of this License; and

You must cause any modified files to carry prominent notices stating that You changed the files; and

You must retain, in the Source form of any Derivative Works that You distribute, all copyright, patent, trademark, and attribution notices from the Source form of the Work, excluding those notices that do not pertain to any part of the Derivative Works; and

If the Work includes a "NOTICE" text file as part of its distribution, then any Derivative Works that You distribute must include a readable copy of the attribution notices contained within such NOTICE file, excluding those notices that do not pertain to any part of the Derivative Works, in at least one of the following places: within a NOTICE text file distributed as part of the Derivative Works; within the Source form or documentation, if provided along with the Derivative Works; or, within a display generated by the Derivative Works, if and wherever such third-party notices normally appear. The contents of the NOTICE file are for informational purposes only and do not modify the License. You may add Your own attribution notices within Derivative Works that You distribute, alongside or as an addendum to the NOTICE text from the Work, provided that such additional attribution notices cannot be construed as modifying the License. You may add Your own copyright statement to Your modifications and may provide additional or different license terms and conditions for use, reproduction, or distribution of Your modifications, or for any such Derivative Works as a whole, provided Your use, reproduction, and distribution of the Work otherwise complies with the conditions stated in this License.

5. Submission of Contributions. Unless You explicitly state otherwise, any Contribution intentionally submitted for inclusion in the Work by You to the Licensor shall be under the terms and conditions of this License, without any additional terms or conditions. Notwithstanding the above, nothing herein shall supersede or modify the terms of any separate license agreement you may have executed with Licensor regarding such Contributions.

6. Trademarks. This License does not grant permission to use the trade names, trademarks, service marks, or product names of the Licensor, except as required for reasonable and customary use in describing the origin of the Work and reproducing the content of the NOTICE file.

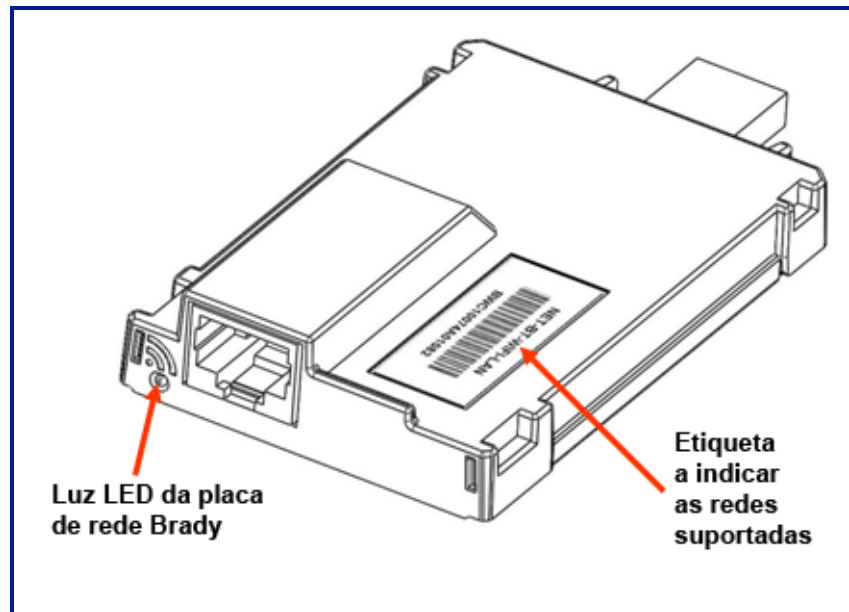
7. Disclaimer of Warranty. Unless required by applicable law or agreed to in writing, Licensor provides the Work (and each Contributor provides its Contributions) on an "AS IS" BASIS, WITHOUT WARRANTIES OR CONDITIONS OF ANY KIND, either express or implied, including, without limitation, any warranties or conditions of TITLE, NON-INFRINGEMENT, MERCHANTABILITY, or FITNESS FOR A PARTICULAR PURPOSE. You are solely responsible for determining the appropriateness of using or redistributing the Work and assume any risks associated with Your exercise of permissions under this License.

8. Limitation of Liability. In no event and under no legal theory, whether in tort (including negligence), contract, or otherwise, unless required by applicable law (such as deliberate and grossly negligent acts) or agreed to in writing, shall any Contributor be liable to You for damages, including any direct, indirect, special, incidental, or consequential damages of any character arising as a result of this License or out of the use or inability to use the Work (including but not limited to damages for loss of goodwill, work stoppage, computer failure or malfunction, or any and all other commercial damages or losses), even if such Contributor has been advised of the possibility of such damages.

9. Accepting Warranty or Additional Liability. While redistributing the Work or Derivative Works thereof, You may choose to offer, and charge a fee for, acceptance of support, warranty, indemnity, or other liability obligations and/or rights consistent with this License. However, in accepting such obligations, You may act only on Your own behalf and on Your sole responsibility, not on behalf of any other Contributor, and only if You agree to indemnify, defend, and hold each Contributor harmless for any liability incurred by, or claims asserted against, such Contributor by reason of your accepting any such warranty or additional liability.

To accommodate license compatibility with the widest possible range of client code licenses, the shared library code, which is linked at runtime into the same address space as the client using it, is licensed under the terms of the "Three-Clause BSD License". The Linux Name Service Switch code, contributed by National ICT Australia Ltd (NICTA) is licensed under the terms of the NICTA Public Software Licence (which is substantially similar to the "Three-Clause BSD License", with some additional language pertaining to Australian law).

Placa de Rede Brady



Luz LED da placa de rede Brady

As diferentes cores da luz LED da placa de rede Brady têm o seguinte significado:

Cor	Estado
Verde fixo	A placa está a funcionar correctamente - estado normal.
Laranja intermitente	O firmware está danificado e precisa de ser actualizado. Use o Utilitário de Configuração da Placa de Rede Brady para actualizar o firmware. (Consulte página 79 para obter mais informações sobre como transferir o firmware novo.)
Verde intermitente	O firmware está a ser actualizado.
Vermelho fixo	Falha na placa. Não há comunicação entre a Placa de Rede Brady e a impressora. Contacte o administrador do sistema.
Vermelho intermitente	Foi detectado um erro durante a operação actual da placa de rede Brady. Verifique a operação actual.

Redes suportadas

O nome existente na etiqueta do código de barras na placa de rede indica as redes compatíveis com essa placa específica.

Nome	Redes suportadas
NET- BT-WIFI-LAN	Bluetooth, WiFi e Ethernet
NET-WIFI	APENAS WiFi e Bluetooth
NET-BT	APENAS Bluetooth
NET-LAN	APENAS Ethernet

Instalação da Placa de Rede Brady

Se a sua impressora Brady estiver equipada com uma Placa de Rede Brady (WiFi ou Ethernet), pode configurar a impressora para funcionar como impressora local (fisicamente ligada ao computador através de um cabo USB) e como impressora de rede (partilhada) através de Ethernet ou WiFi. Para definir a impressora como uma impressora de rede, tem de configurar a Placa de Rede Brady para reconhecer e funcionar com as suas redes. O CD de controladores para impressoras Brady, fornecido com a impressora, contém os assistentes de instalação não só para os controladores mas também para a configuração da Placa de Rede Brady. Os controladores para impressoras e os controladores da Placa de Rede Brady também podem ser transferidos a partir do website da Brady em www.bradyid.com.

O assistente de instalação e configuração da placa de rede identifica seis cenários de instalação diferentes, que são:

- primeira instalação para impressão via WiFi;
- primeira instalação para impressão via Ethernet;
- impressão via Bluetooth a partir de telemóveis;
- instalação para mais computadores;
- instalação apenas do controlador USB;
- primeira instalação para impressão Ad-hoc.

Primeira instalação para impressão via WiFi

Siga este procedimento de instalação:

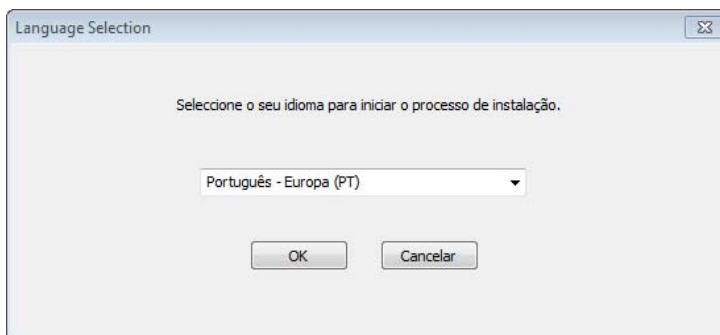
- ☒ **se tiver acabado de adquirir a impressora e estiver a configurá-la pela primeira vez;**
- ☒ **se pretender enviar trabalhos de impressão para a impressora a partir de um computador através de uma rede WiFi.**

Para configurar a Placa de Rede Brady para WiFi e instalar o controlador de impressora para a sua impressora Brady, execute os passos seguintes.

1. Certifique-se de que a impressora e o computador **NÃO** estão ligados com um cabo USB.
2. Introduza o CD de controladores para impressoras Brady na unidade de CD do computador.

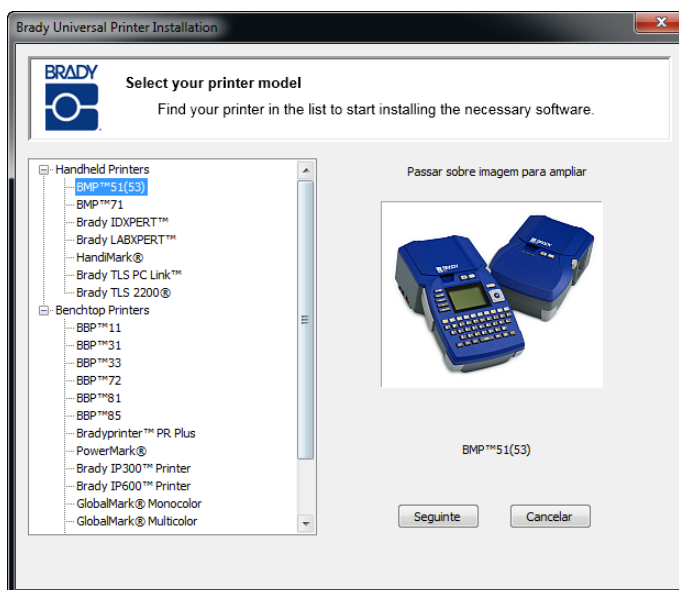
O assistente de instalação inicia-se automaticamente.

3. Ligue a impressora.
4. Na lista pendente, seleccione o idioma e clique em OK.

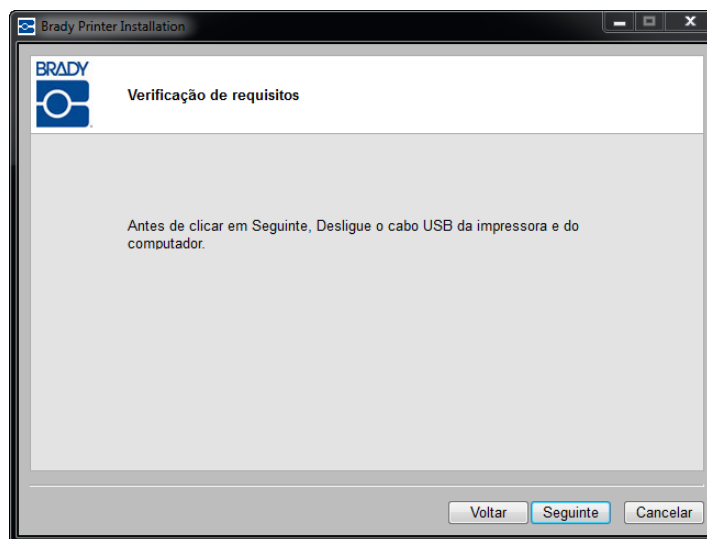


5. Clique no modelo de impressora que está a instalar e, depois, clique em Seguinte.

O Instalador do Windows instala o Utilitário de configuração da placa de rede Brady.



6. Se a impressora e o computador estiverem ligados com um cabo USB, **DESLIGUE-O** agora.

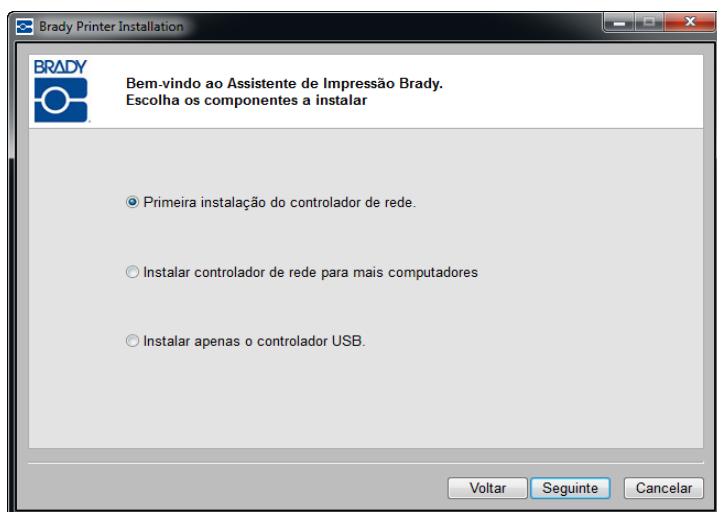


7. Na janela emergente "Instalar software do dispositivo", clique em **Instalar** para instalar os controladores da impressora.

6 | Instalação da Placa de Rede Brady

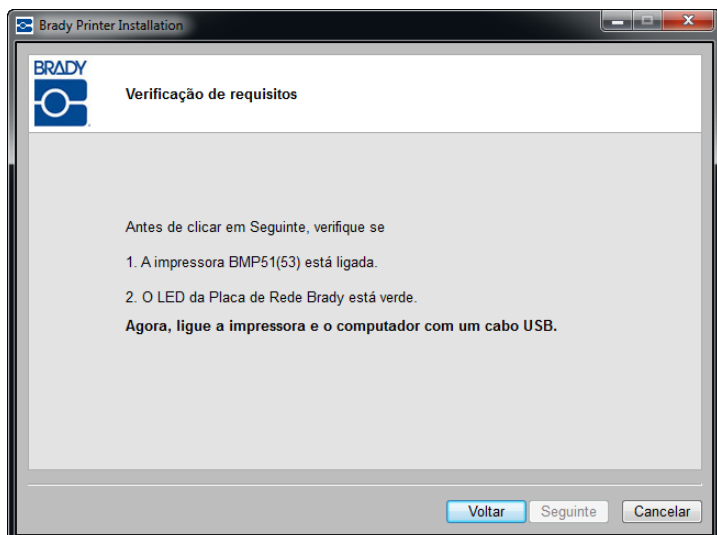
Primeira instalação para impressão via WiFi

8. Clique em *Primeira instalação do controlador de rede* (esta é a opção seleccionada por padrão) e, depois, clique em *Seguinte*.



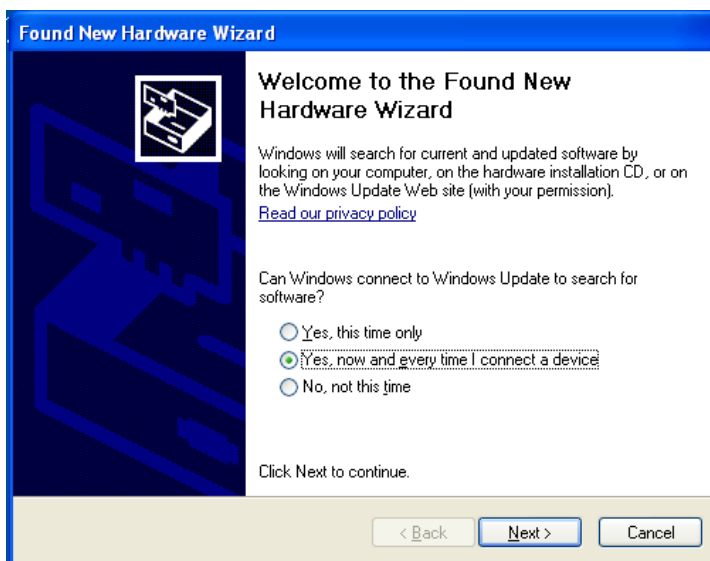
Verifique se a impressora está ligada e se o LED da Placa de Rede Brady está aceso com uma cor verde fixa.

9. Ligue a impressora ao computador com um cabo USB.



Se estiver a instalar os controladores da impressora no Windows XP, é apresentada a informação *Novo assistente de hardware encontrado*. Se esta informação for apresentada, continue com o Passo 11, Caso contrário, aceda ao Passo 14, na [página 8](#).

10. Clique no botão de opção *Sim, agora e sempre que ligar um dispositivo e*, em seguida, clique em Seguinte.



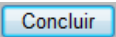
11. Clique no botão de opção *Instalar o software automaticamente (recomendado)* e, em seguida, clique em Seguinte.



8 | Instalação da Placa de Rede Brady

Primeira instalação para impressão via WiFi

A instalação prossegue.

12. Quando estiver concluída, clique em Concluir  para fechar o assistente.

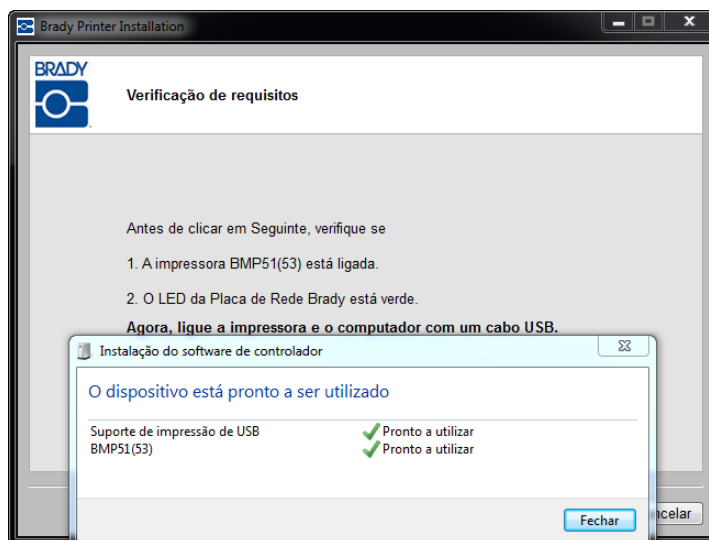
13. Clique em Seguinte.



14. É apresentada uma mensagem indicando que o dispositivo está pronto para ser utilizado. Clique em Fechar para remover esta mensagem.

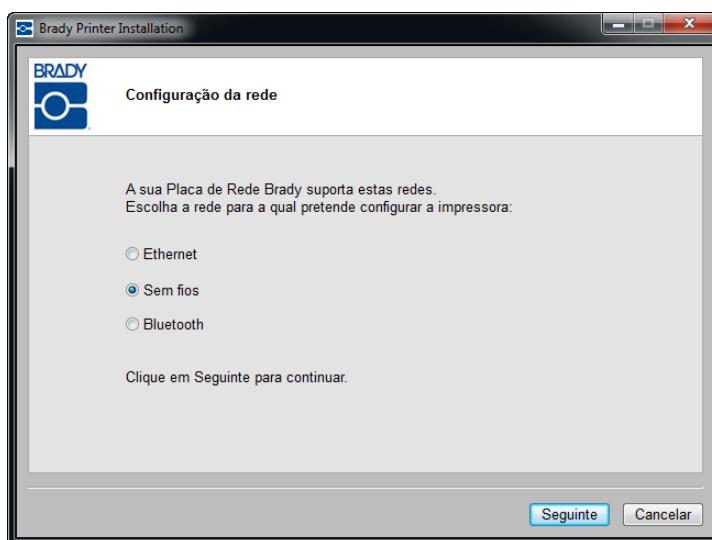
15. Na janela Verificação de requisitos, clique em Seguinte.

A ligação é instalada e verificada.



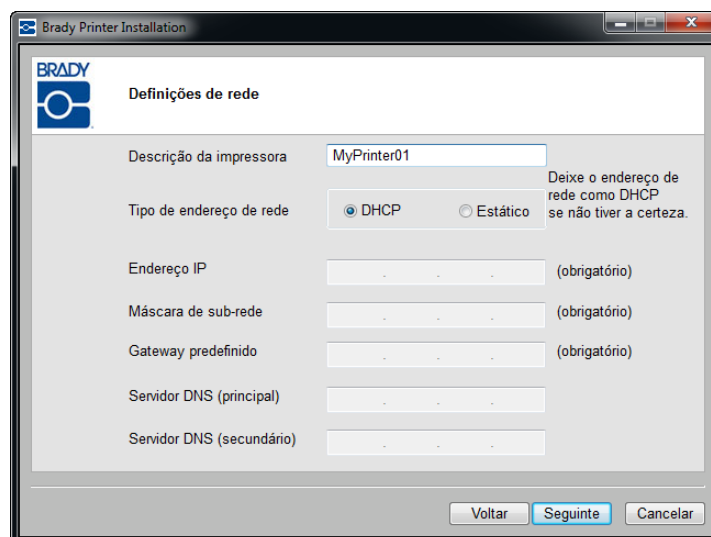
São apresentadas as redes suportadas pela Placa de Rede Brady. Para activar o WiFi:

16. Clique em Sem fios e, depois, em Seguinte.



17. No campo *Descrição da impressora*, introduza um nome fácil de identificar/uma descrição para esta ligação de rede. Pode utilizar quaisquer caracteres alfanuméricos.

Para o campo *Tipo de endereço de rede*, recomenda-se o protocolo DHCP. Se estiver a utilizar DHCP, continue com o Passo 22, na [página 10](#).



Utilizar tipo de endereço de rede estático

Se pretender utilizar o tipo de endereço de rede estático, os campos Endereço IP, Máscara de sub-rede e Gateway predefinido são de preenchimento obrigatório. Pode obter estas informações a partir do administrador da rede. Para utilizar Estático:

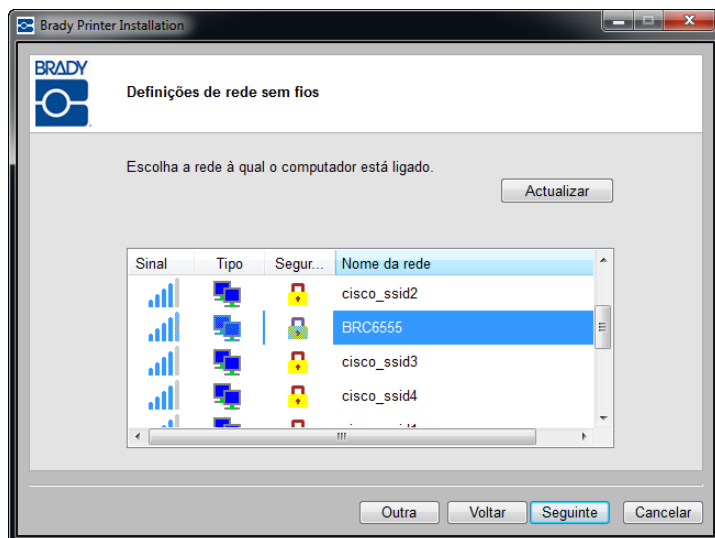
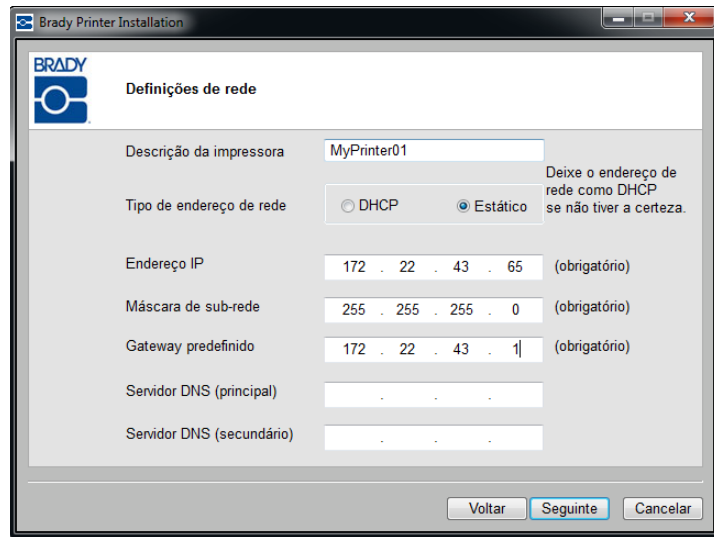
18. Clique no botão rádio *Estático*.
Este procedimento abre os campos requeridos para introdução dos endereços.
19. Clique no campo *Endereço IP* e introduza o endereço de IP pretendido. O cursor posiciona-se automaticamente nas secções separadas do campo Endereço IP.
20. Clique no campo *Máscara de sub-rede* e introduza uma máscara de sub-rede.
21. Clique no campo *Gateway predefinido* e introduza o endereço da porta de ligação.
22. Quando tiver concluído, clique em *Seguinte*.
23. Escolha a rede à qual o computador está ligado.

Nota: Se não vir a rede na lista, clique no botão *Actualizar*

Actualizar

Se continuar sem ver a rede na lista, pode escolher *Outra* para especificar uma rede manualmente.

Para atribuir um nome a outra rede, continue para o Passo 30 na [página 14](#).



Certifique-se de que tem à disposição o nome da rede WiFi do computador e a palavra-chave da rede (se esta estiver protegida por palavra-passe). Quando tiver esses dados disponíveis:

24. Clique em *Seguinte*.

A placa de rede Brady pode ser configurada para uma ligação de rede pessoal e para uma ligação de rede empresarial.

Uma rede pessoal, também conhecida como WPA PSK, é geralmente utilizada em casas e pequenos escritórios. A rede é protegida por uma palavra-passe que é especificada pelo utilizador.

Uma rede empresarial, também conhecida como WPA-802.1X (ou apenas WPA), é utilizada por empresas maiores e requer um servidor RADIUS. O servidor gera a palavra-passe.

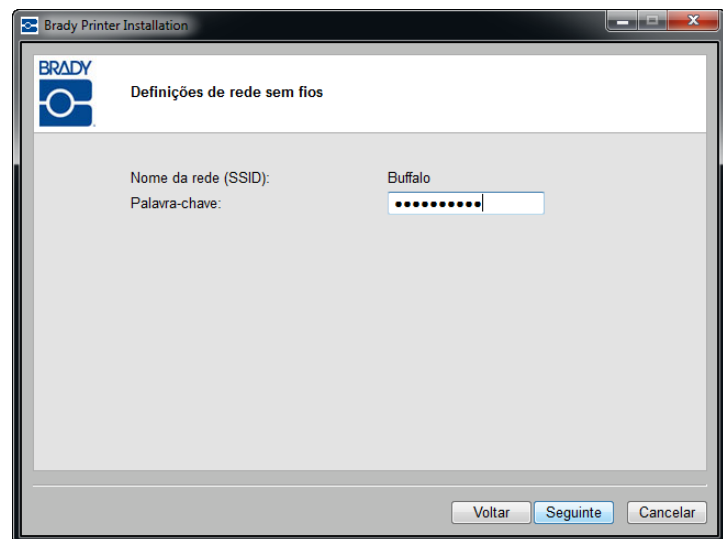
Nota: O instalador detecta automaticamente se a rede que utilizou é pessoal ou empresarial.

Se a rede sem fios que seleccionou na lista for uma rede pessoal:

- 25.** Introduza a palavra-chave da rede seleccionada.

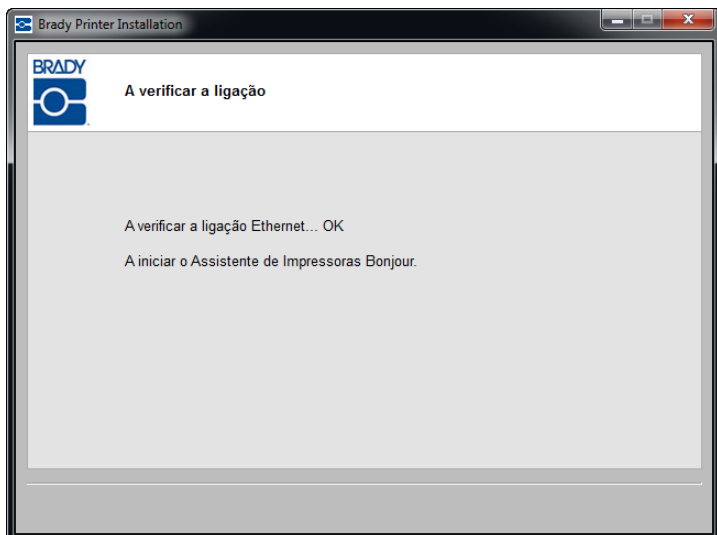
Se não souber qual a palavra-passe ou o tipo de segurança, consulte o administrador da rede.

- 26.** Clique em Seguinte.



A ligação é verificada.

Se utilizou Estático no Passo 18, a impressora de rede já está estabelecida e marcada para o endereço de IP que introduziu no Passo 19. A impressora está instalada. Continue com o Passo 48, na [página 20](#). Caso contrário, continue com os Serviços de impressão Bonjour começando na [página 17](#).

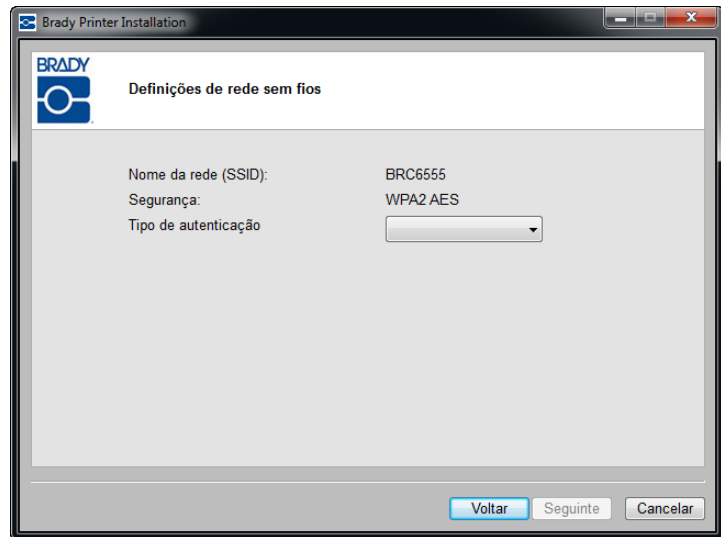


12 | Instalação da Placa de Rede Brady

Primeira instalação para impressão via Wi-Fi

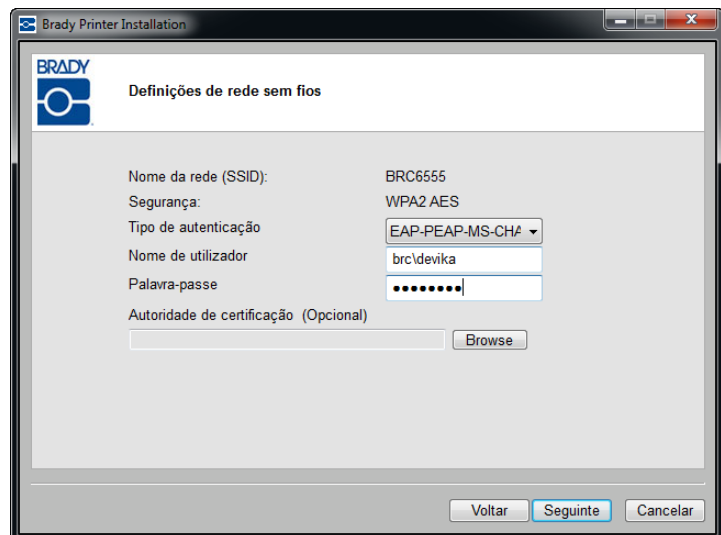
Se a rede sem fios que seleccionou na lista for uma rede empresarial:

27. Clique na seta para baixo e seleccione o *Tipo de autenticação*. (Se não souber o Tipo de autenticação, consulte o administrador da rede.)



28. Introduza o nome de utilizador e palavra-passe, se aplicável. Consulte o administrador da rede para determinar se já lhe foi atribuído um nome de utilizador.

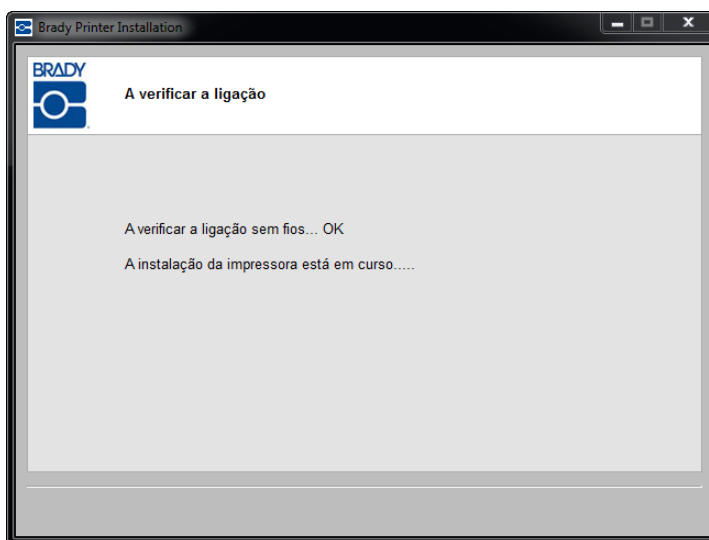
Nota: Dependendo do Tipo de autenticação seleccionado, um Nome de utilizador, Palavra-passe e Certificados podem, ou não, ser requeridos. Consulte a Tabela de autenticação na [página 14](#) para obter mais informações.



29. Quando tiver concluído, clique em Seguinte.

A ligação de rede sem fios é verificada.

Se utilizou Estático no Passo 18, ou se o PC e as impressora não estiverem na mesma sub-rede, a impressora de rede já foi estabelecida e marcada para o endereço de IP que introduziu ou para o endereço de IP DHCP. A impressora está instalada. Continue com o Passo 48, na [página 20](#).



Caso contrário, continue com os Serviços de impressão Bonjour começando na [página 17](#).

Tipos e métodos de autenticação

O instalador da placa de rede Brady suporta vários tipos e métodos de autenticação. As tabelas seguintes indicam os métodos de autenticação 802.1X suportados para as redes empresariais WPA e WPA2, e os campos requeridos para o tipo de autenticação que utiliza. Consulte estas tabelas quando escolher o Tipo de autenticação.

Authentication Methods Supported	EAP-TLS	EAP-TTLS	PEAP v0
Certificate Formats Supported	PKCS1	PKCS12	
	.DER .PEM .CER .CRT .KEY	.PFX	

Tabela 1. Métodos de autenticação

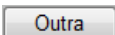
Authentication Type	Username	Password/ Private key Password	CA Certificate	Client Certificate	Client Key
EAP-PEAP-MSCHAPV2	Mandatory	Mandatory	Optional	Not Required	Not Required
EAP-TTLS-MSCHAPV2	Mandatory	Mandatory	Optional	Not Required	Not Required
EAP-TLS	Mandatory	Not Required	Optional	Mandatory	Mandatory
EAP-TLS	Mandatory	Required if Client Cert is in .PFX format	Optional	Mandatory	Not Required

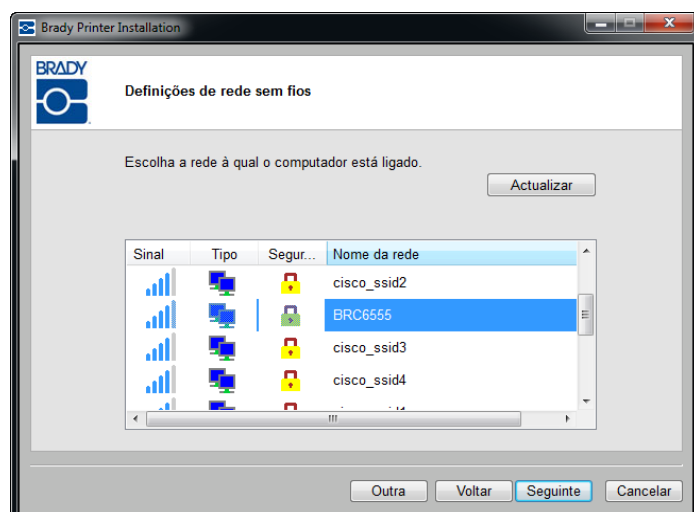
Tabela 2. Tipo de autenticação

Definir outras redes

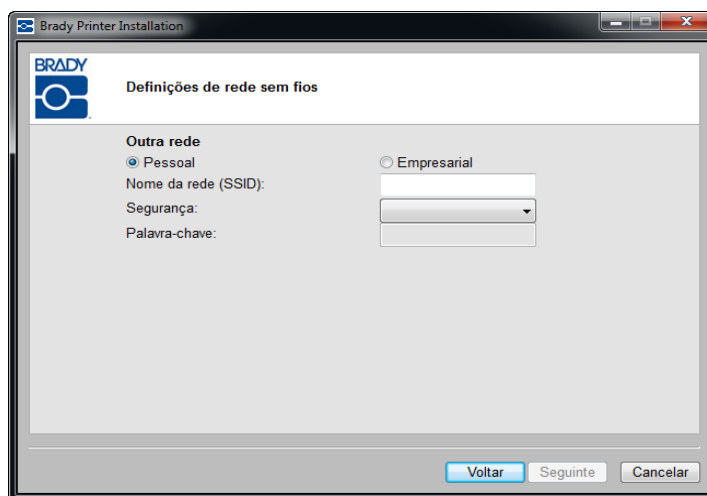
Quando definir Outras redes, deve conhecer o nome da rede (SSID), a segurança aplicada e uma palavra-passe, se aplicável. Pode obter estas informações a partir do administrador da rede.

Para atribuir um nome a outra rede:

30. No ecrã Definições da rede sem fios, clique no botão Outra .



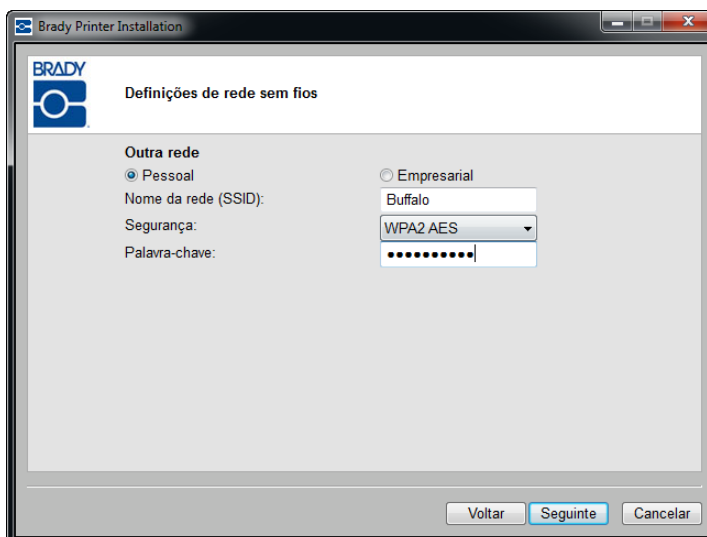
31. No ecrã de rede *Outra*, clique no botão de rádio, Rede pessoal ou Rede empresarial, que melhor descreve esta rede.



Rede pessoal

32. Se clicar em Rede pessoal, introduza o Nome da rede (SSID)
33. No campo Segurança, clique na seta para baixo e seleccione o tipo de segurança.

Dependendo da Segurança seleccionada, pode ou não ter que indicar uma Palavra-passe. Consulte as tabelas de Tipos e métodos de autenticação na [página 14](#) para obter mais informações.



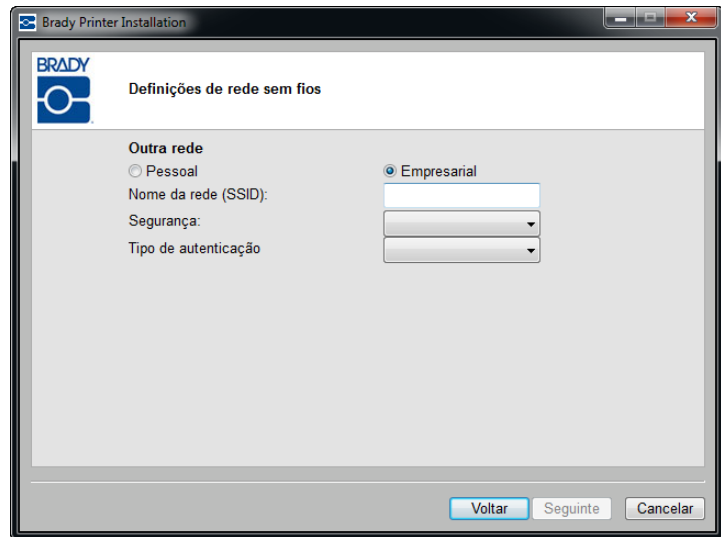
Nota: Não necessita de indicar um Tipo de autenticação para Redes pessoais.

Rede empresarial

Se clicar em Rede empresarial:

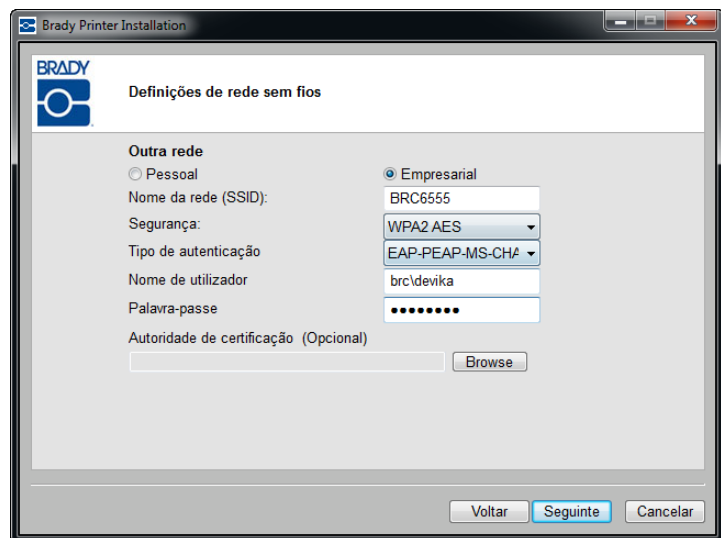
34. Introduza o Nome da rede (SSID)
35. No campo Segurança, clique na seta para baixo e selecione o tipo de segurança.

Nota: Se encontrou a rede na lista, o Nome da rede e a Segurança estão preenchidos automaticamente.



36. Clique na seta para baixo e selecione o *Tipo de autenticação*. (Se não souber o Tipo de autenticação, consulte o administrador da rede.)
37. Introduza o nome de utilizador e palavra-passe, se aplicável. Consulte o administrador da rede para determinar se já lhe foi atribuído um nome de utilizador.

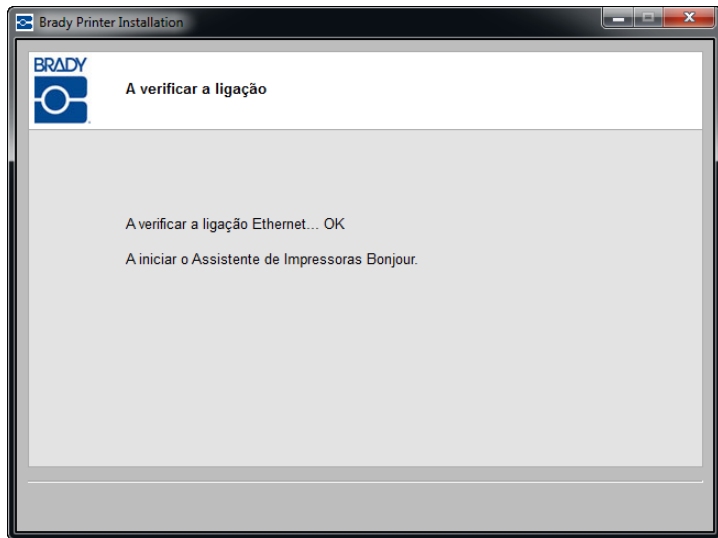
Nota: Dependendo do Tipo de autenticação seleccionado, um Nome de utilizador, Palavra-passe e Certificados podem, ou não, ser requeridos. Consulte a Tabela de autenticação na [página 14](#) para obter mais informações.



38. Quando tiver concluído, clique em Seguinte.

A ligação de rede sem fios é verificada.

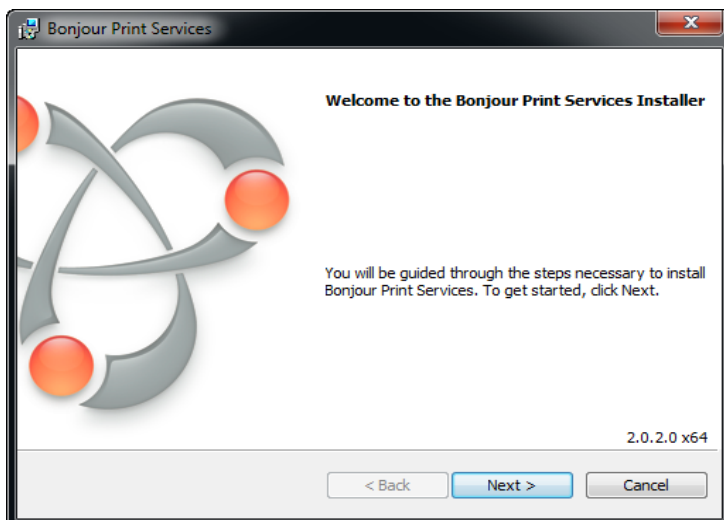
Se utilizou Estático no Passo 18, ou se o PC e a impressora não estiverem na mesma sub-rede, a impressora de rede já foi estabelecida e marcada para o endereço de IP que introduziu ou para o endereço de IP DHCP. A impressora está instalada. Continue com o Passo 48, na [página 20](#).



Serviços de impressão Bonjour

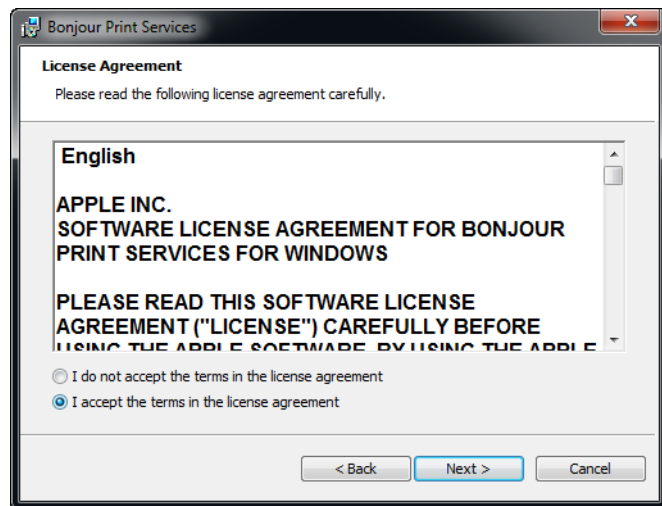
Se utilizou a definição DHCP padrão com o PC e impressora na mesma sub-rede, a ligação é bem-sucedida e o assistente de Bonjour é iniciado. O programa Bonjour serve para configurar e monitorizar as impressoras de rede. O Assistente de Impressoras Bonjour define a sua impressora Brady como uma impressora de rede.

39. Clique em Seguinte.



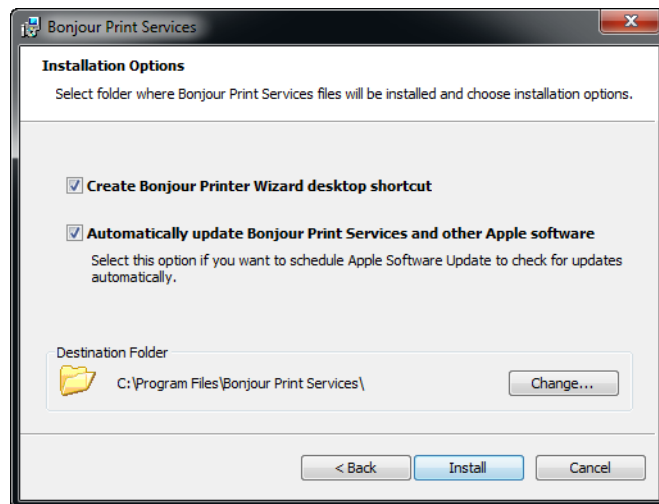
É apresentado o Contrato de Licença de Utilizador Final da Apple.

40. Depois de o ler, clique em Aceito os termos do contrato de licença e, em seguida, clique em Seguinte para continuar.
41. Clique novamente em Seguinte no ecrã Ler informações.

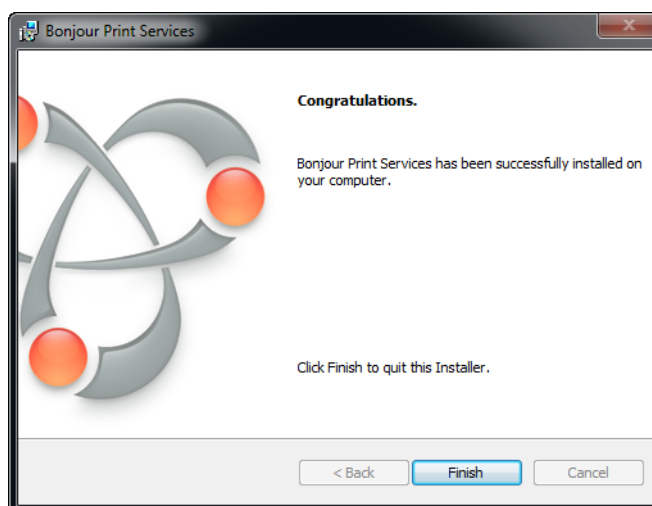


Determine as opções que pretende aplicadas ao assistente Bonjour, e onde pretende que o software dos Serviços de impressão Bonjour seja armazenado.

42. Se pretender alterar a localização de armazenamento predefinida, clique em Alterar e siga os procedimentos normais do Windows para localizar um directório diferente.
43. Quando tiver concluído, clique em Instalar.



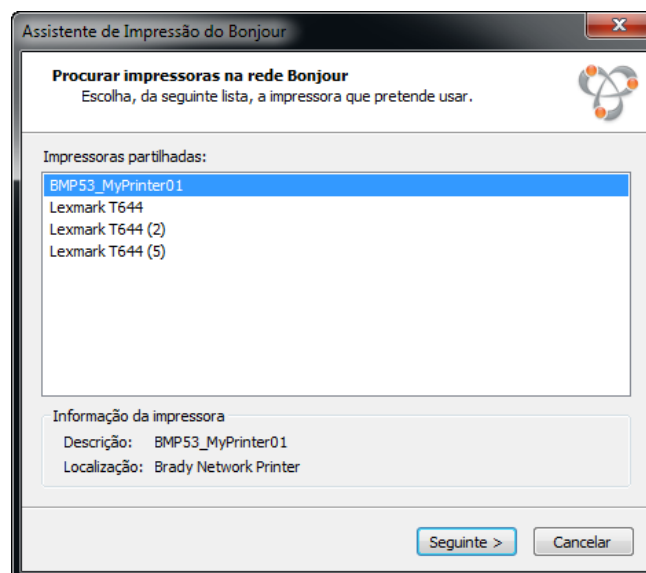
44. Quando os Serviços de impressão Bonjour estiverem instalados, clique em Concluir.



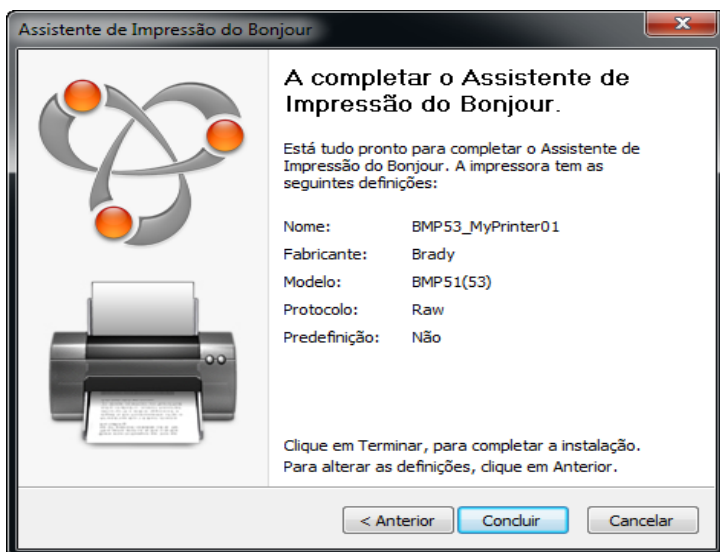
45. Clique no nome da impressora de rede atribuída.

Para uma identificação mais fácil, o nome ou a descrição que indicou no Passo 17 é apresentado no canto inferior esquerdo do ecrã.

46. Clique em Seguinte.



47. Assim que o Assistente de Impressoras Bonjour terminar, clique em Concluir.



A Instalação de Impressoras Brady está concluída.

48. Clique em Concluir para sair do assistente.



Primeira instalação para impressão via Ethernet

Siga este procedimento de instalação:

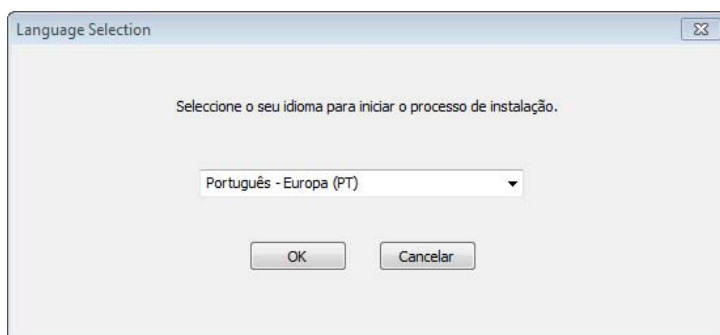
- ☒ **Se tiver acabado de adquirir a impressora e estiver a configurá-la pela primeira vez;**
- ☒ **Se pretender enviar trabalhos de impressão para a impressora a partir de um computador através de Ethernet ou uma rede LAN.**

A Placa de Rede Brady está configurada para suportar ligações Ethernet ou WiFi. Não pode ter ambas as ligações activas em simultâneo. Para activar a ligação Ethernet:

1. Certifique-se de que a impressora e o computador **NÃO** estão ligados com um cabo USB.
2. Introduza o CD de controladores para impressoras Brady na unidade de CD do computador.

O assistente de instalação inicia-se automaticamente.

3. Ligue a impressora.
4. Na lista pendente, seleccione o idioma e clique em OK.

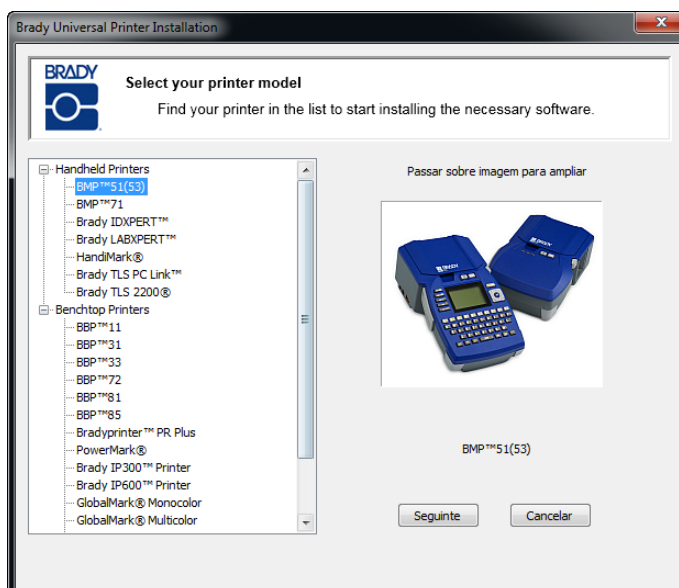


22 | Instalação da Placa de Rede Brady

Primeira instalação para impressão via Ethernet

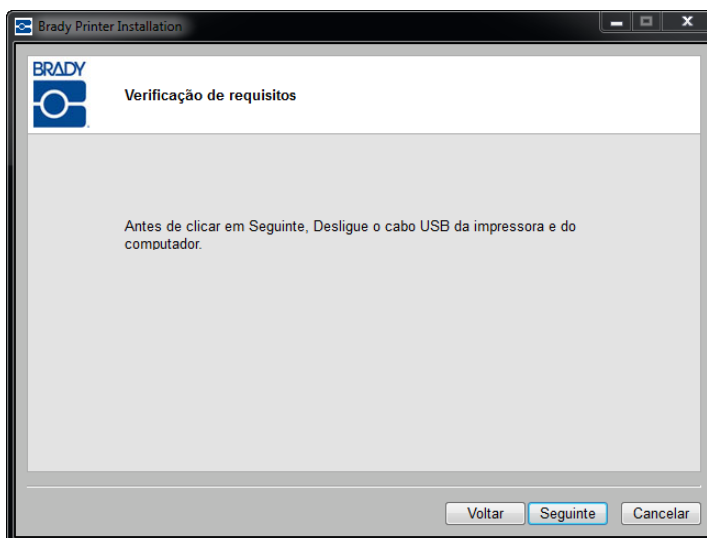
5. Clique no modelo de impressora que está a instalar e, depois, clique em Seguinte.

O Instalador do Windows instala o Utilitário de configuração da placa de rede Brady.

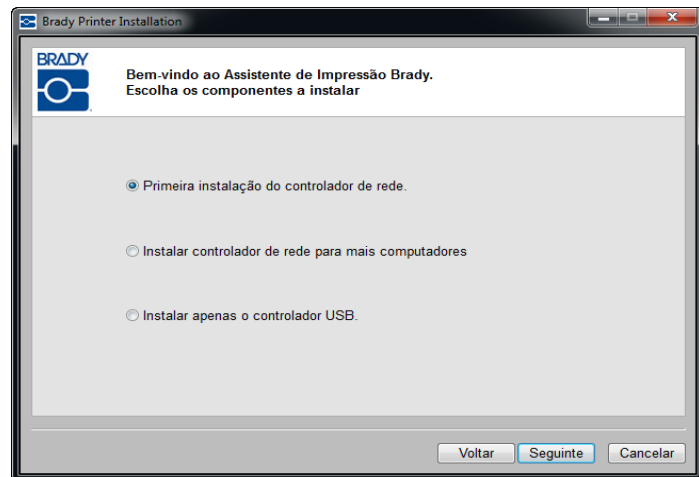


6. Se a impressora e o computador estiverem ligados com um cabo USB, DESLIGUE-O agora.

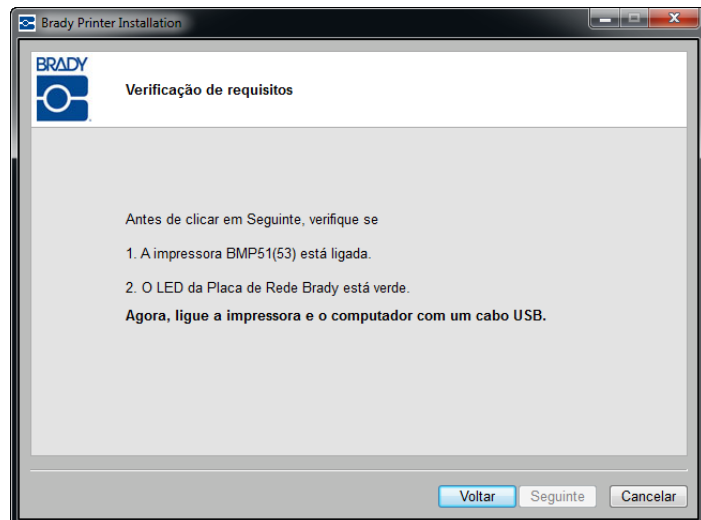
7. Clique em Seguinte.



8. Clique em *Primeira instalação do controlador da rede* (esta é a opção seleccionada por padrão) e, depois, clique em *Seguinte*.



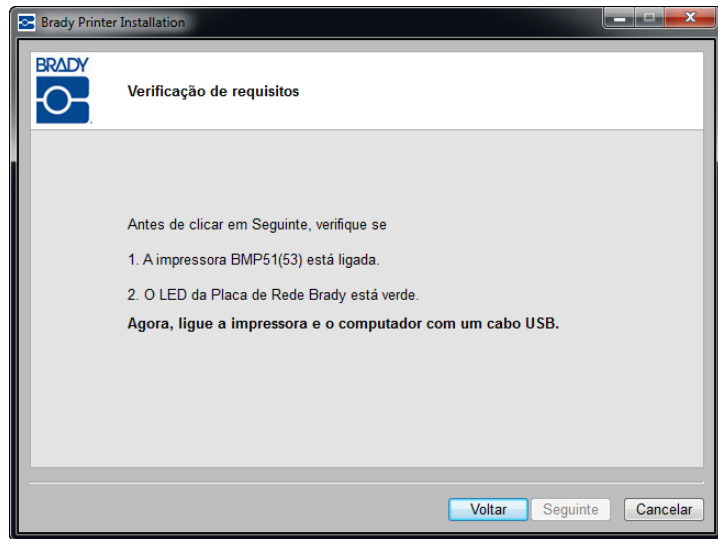
9. Verifique se a impressora está ligada e se o LED da Placa de Rede Brady está aceso com uma cor verde fixa.



24 | Instalação da Placa de Rede Brady

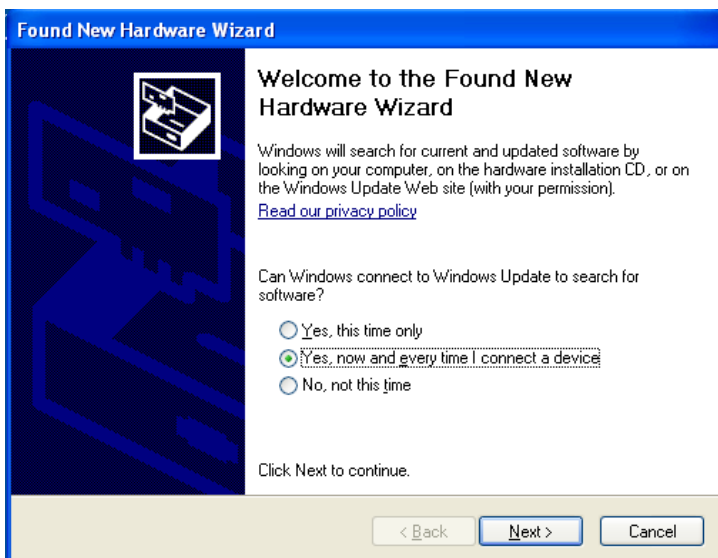
Primeira instalação para impressão via Ethernet

10. Ligue a impressora ao computador com um cabo USB e, depois, clique em Seguinte.



Se estiver a instalar os controladores da impressora no Windows XP, é apresentada a informação *Novo assistente de hardware encontrado*. Se esta informação for apresentada, continue com o Passo 11. Caso contrário, aceda ao Passo 15 na [página 26](#).

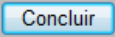
11. Clique no botão de opção *Sim, agora e sempre que ligar um dispositivo* e, em seguida, clique em Seguinte.



12. Clique no botão de opção *Instalar o software automaticamente (recomendado)* e, em seguida, clique em Seguinte.



A instalação prossegue.

13. Quando estiver concluída, clique em Concluir  para fechar o assistente.

14. Clique em Seguinte.

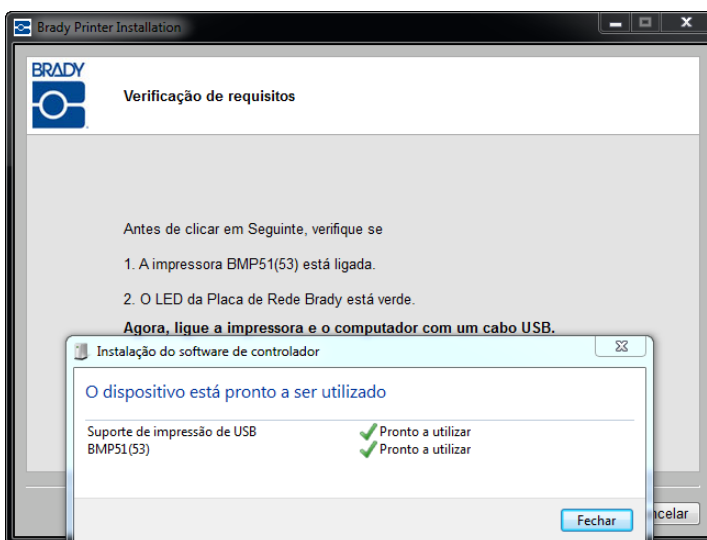


26 | Instalação da Placa de Rede Brady

Primeira instalação para impressão via Ethernet

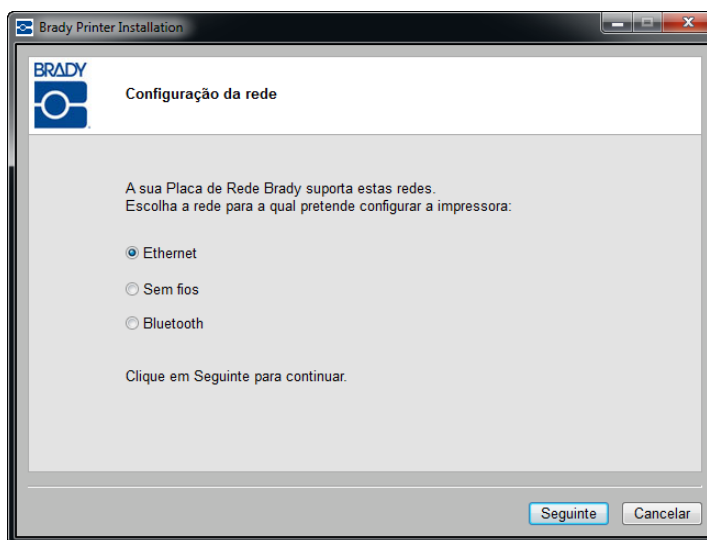
15. É apresentada uma mensagem indicando que o dispositivo está pronto para ser utilizado. Clique em Fechar para remover esta mensagem.

A ligação é instalada e verificada.



São apresentadas as redes suportadas pela Placa de Rede Brady. Para activar a Ethernet:

16. Clique no botão de rádio *Ethernet* e, depois, em Seguinte.



17. No campo *Descrição da impressora*, introduza um nome fácil de identificar/ uma descrição para esta ligação de rede. Pode utilizar quaisquer caracteres alfanuméricos.

Para o campo *Tipo de endereço de rede*, recomenda-se o protocolo DHCP. Se estiver a utilizar DHCP, continue com o Passo 22, na [página 27](#).

Brady Printer Installation

Definições de rede

Descrição da impressora: MyPrinter01

Tipo de endereço de rede: ☒ DHCP ☐ Estático

Endereço IP: (obrigatório)

Máscara de sub-rede: (obrigatório)

Gateway predefinido: (obrigatório)

Servidor DNS (principal):

Servidor DNS (secundário):

Voltar Seguinte Cancelar

Utilizar tipo de endereço de rede estático

Se pretender utilizar Estático, será necessário preencher os campos Endereço IP, Máscara de sub-rede e Gateway predefinido. Pode obter estas informações a partir do administrador da rede. Para utilizar Estático:

18. Clique no botão rádio *Estático*. Este procedimento abre os campos requeridos para introdução dos endereços.
19. Clique no campo *Endereço IP* e introduza o endereço de IP pretendido. O cursor posiciona-se nas secções separadas do campo Endereço IP.
20. Clique no campo *Máscara de sub-rede* e introduza uma máscara de sub-rede.
21. Clique no campo *Gateway predefinido* e introduza o endereço da porta de ligação.
22. Quando tiver concluído, clique em Seguinte.

Brady Printer Installation

Definições de rede

Descrição da impressora: MyPrinter01

Tipo de endereço de rede: ☐ DHCP ☒ Estático

Endereço IP: 172 . 22 . 43 . 65 (obrigatório)

Máscara de sub-rede: 255 . 255 . 255 . 0 (obrigatório)

Gateway predefinido: 172 . 22 . 43 . 1 (obrigatório)

Servidor DNS (principal):

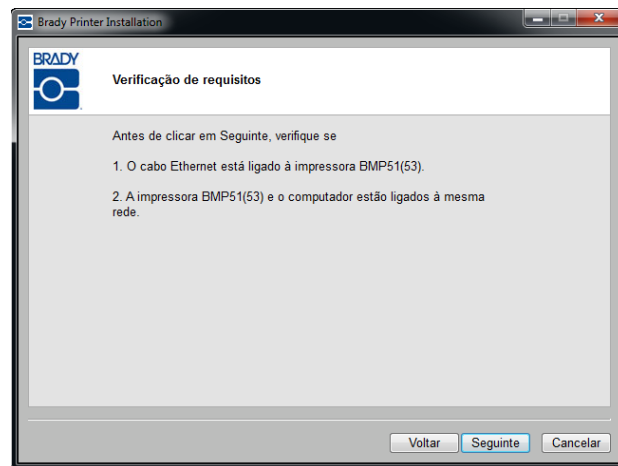
Servidor DNS (secundário):

Voltar Seguinte Cancelar

28 | Instalação da Placa de Rede Brady

Primeira instalação para impressão via Ethernet

Certifique-se de que o cabo de Ethernet está ligado à impressora, e que esta e o PC estão ligados na mesma rede.



Para confirmar que a impressora e o computador estão ligados à mesma rede, consulte as seguintes directrizes de ligação.

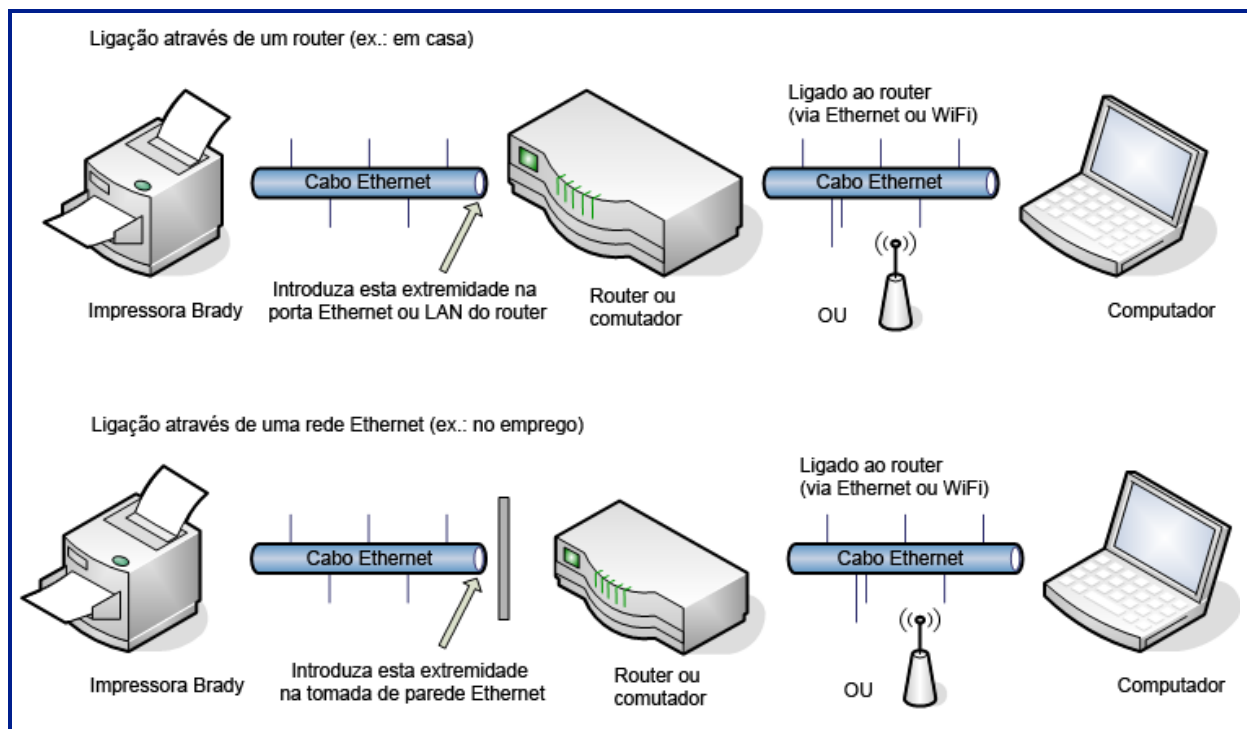
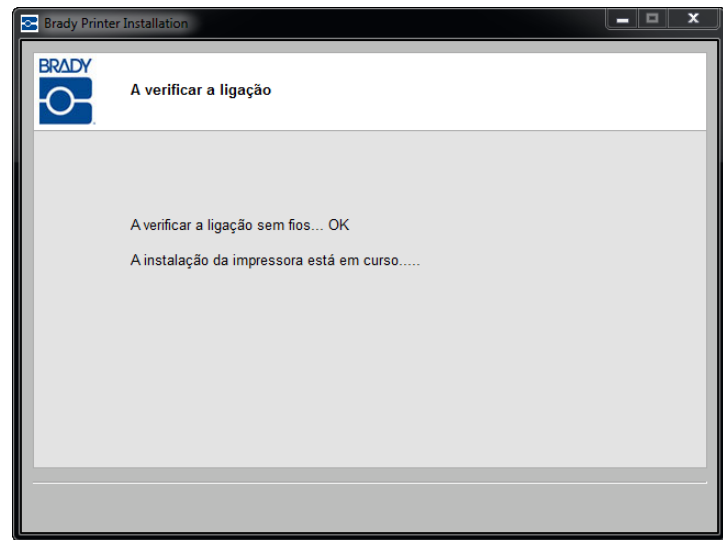


Figura 1 • Ligações de rede

23. Clique em Seguinte.

A ligação de Ethernet é verificada.

Se utilizou Estático no Passo 18, as impressoras de rede já estão estabelecidas e marcadas para o endereço de IP que introduziu no Passo 19. Continue com o Passo 33 na [página 32](#).

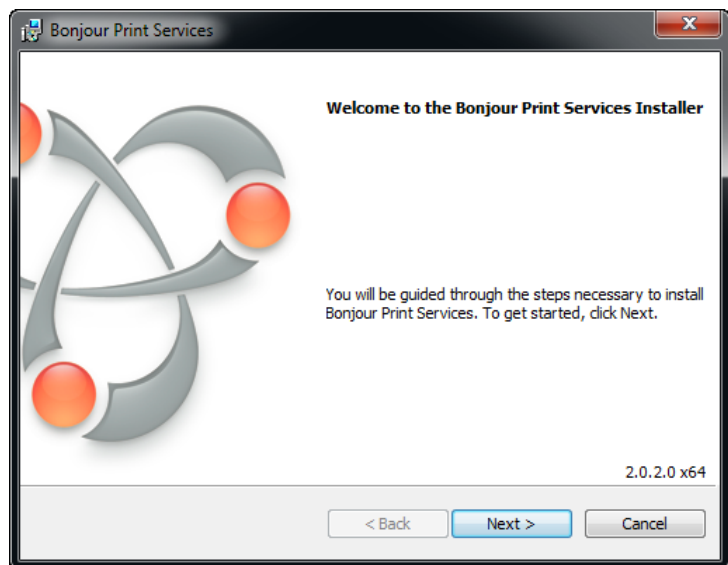


Caso contrário, continue com o seguinte programa dos Serviços de impressão Bonjour.

Serviços de impressão Bonjour

Se utilizou a definição DHCP padrão com o PC e impressora na mesma rede, e se a ligação de Ethernet for bem-sucedida, o assistente de Bonjour é iniciado. O programa Bonjour serve para configurar e monitorizar as impressoras de rede. O Assistente de Impressoras Bonjour define a sua impressora Brady como uma impressora de rede.

24. Clique em Seguinte.



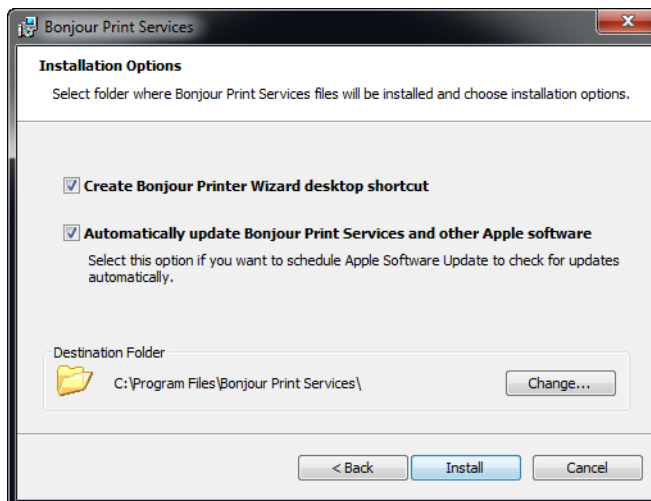
É apresentado o Contrato de Licença de Utilizador Final da Apple.

25. Depois de o ler, clique em *Aceito os termos do contrato de licença* e, em seguida, clique em *Seguinte* para continuar.
26. Clique novamente em *Seguinte* no ecrã *Ler informações*.

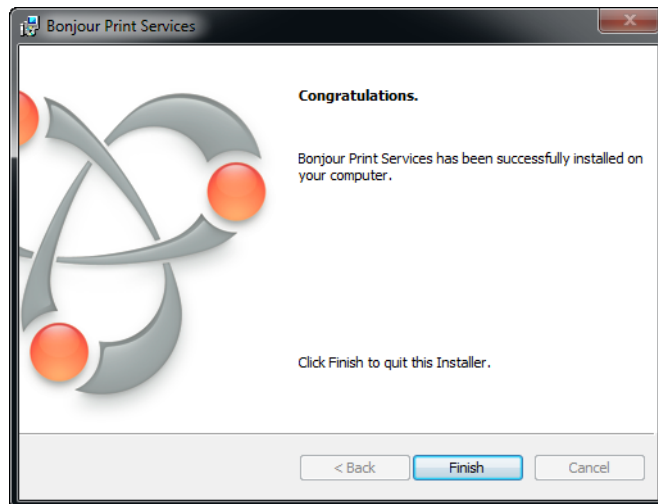


Determine as opções que pretende aplicadas ao assistente Bonjour, e onde pretende que o software dos Serviços de impressão Bonjour seja armazenado.

27. Se pretender alterar a localização de armazenamento predefinida, clique em *Alterar* e siga os procedimentos normais do Windows para localizar um directório diferente.
28. Quando tiver concluído, clique em *Instalar*.



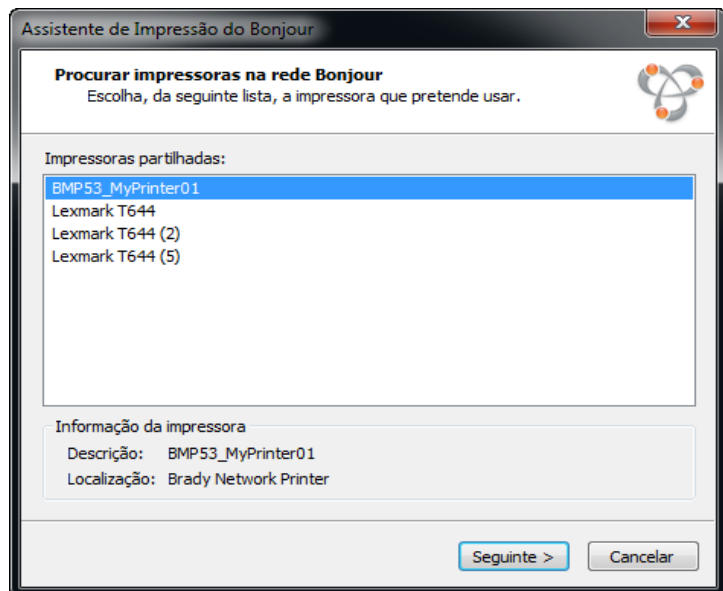
29. Quando os Serviços de impressão Bonjour estiverem instalados, clique em Concluir.



30. Clique no nome da impressora de rede atribuída.

Para uma identificação mais fácil, o nome ou a descrição que indicou no Passo 17 é apresentado no canto inferior esquerdo do ecrã.

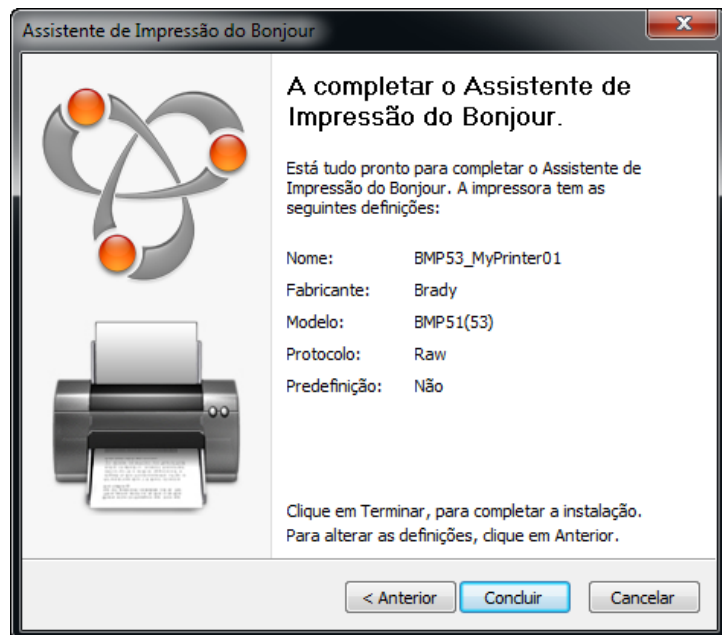
31. Clique em Seguinte.



32 | Instalação da Placa de Rede Brady

Primeira instalação para impressão via Ethernet

32. Assim que o Assistente de Impressoras Bonjour terminar, clique em Concluir.



A Instalação de Impressoras Brady está concluída.

33. Clique em Concluir para sair do assistente.



Impressão via Bluetooth a partir de telemóveis

Se o telemóvel tiver a aplicação móvel Brady instalada, pode enviar trabalhos de impressão directamente para a impressora via Bluetooth. Não necessita de efectuar qualquer instalação do software. A impressora necessita de estar ligada e o LED da placa de rede Brady deve estar verde.

PIN predefinido

Se a aplicação móvel Brady solicitar o código PIN (Personal Identification Number - Número de identificação pessoal) da impressora Brady com a qual está a estabelecer ligação, comece por utilizar o código PIN predefinido: 0000.

Pode alterar este PIN através do Utilitário de Configuração da Placa de Rede Brady. Consulte a [página 41](#) (Instalação apenas do controlador USB) para obter instruções para instalar o Utilitário de Configuração. Consulte a [página 77](#) para obter informações sobre como alterar o PIN.

Nome predefinido

Também pode alterar o nome de dispositivo da impressora através do Utilitário de Configuração da Placa de Rede Brady. Consulte a [página 41](#) (Instalação apenas do controlador USB) para obter instruções para instalar o Utilitário de Configuração. Consulte a [página 77](#) para mais informações sobre como alterar o nome da impressora.

Instalação para mais computadores

Siga este procedimento de instalação se a impressora já tiver sido configurada anteriormente e pretender agora utilizar outro computador para enviar trabalhos de impressão para a impressora.

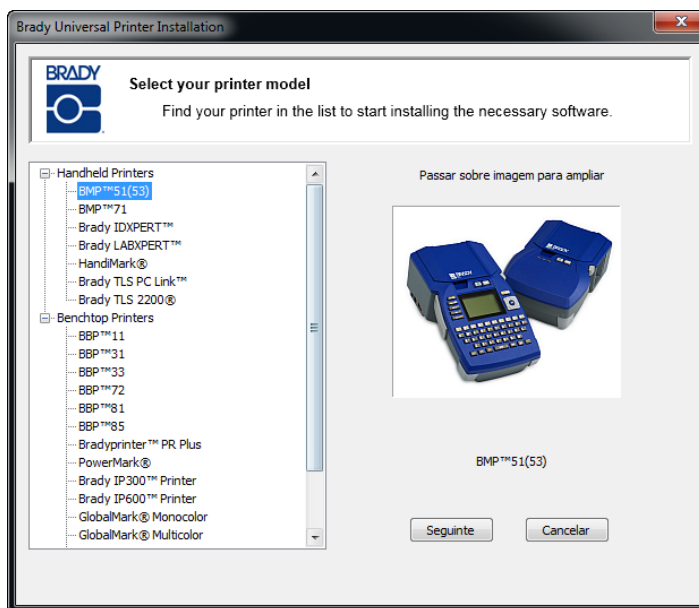
Nota: Esse outro computador tem de estar ligado à mesma rede que a impressora. Caso contrário, não será detectado durante a instalação.

Depois da Placa de Rede Brady ter sido configurada para Ethernet ou WiFi, pode instalar esses controladores de rede em mais computadores.

1. Introduza o CD com o controlador universal para impressoras Brady na unidade de CD do computador.

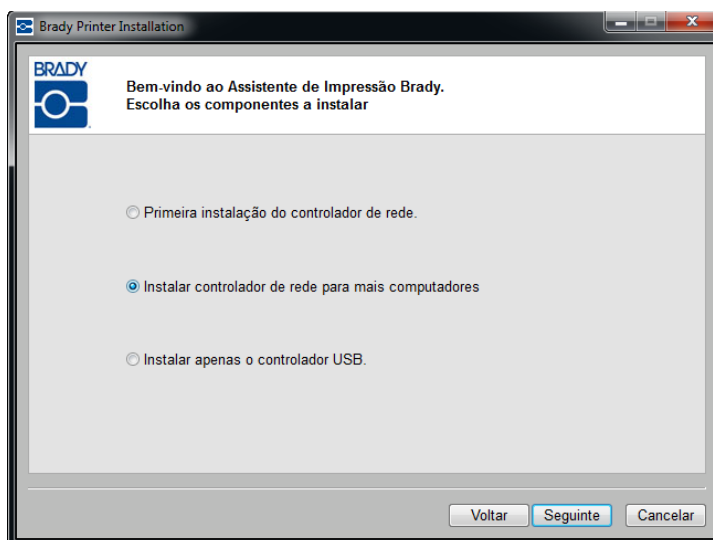
O assistente de instalação inicia-se automaticamente.

2. Clique no modelo de impressora que está a instalar.
3. Clique em Seguinte.

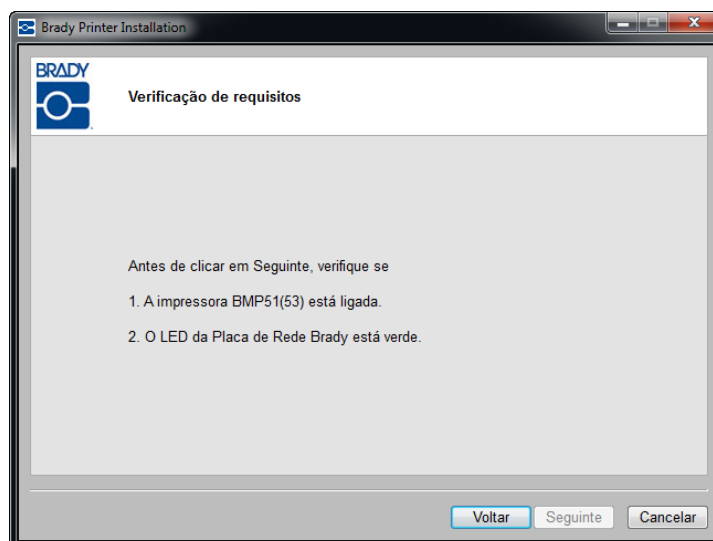


4. Clique em *Instalar controlador de rede para mais computadores*.

5. Clique em *Seguinte*.



6. Depois de verificar se a impressora está ligada e se a Placa de Rede Brady está a funcionar correctamente (o que é indicado pela luz verde), clique em *Seguinte*.

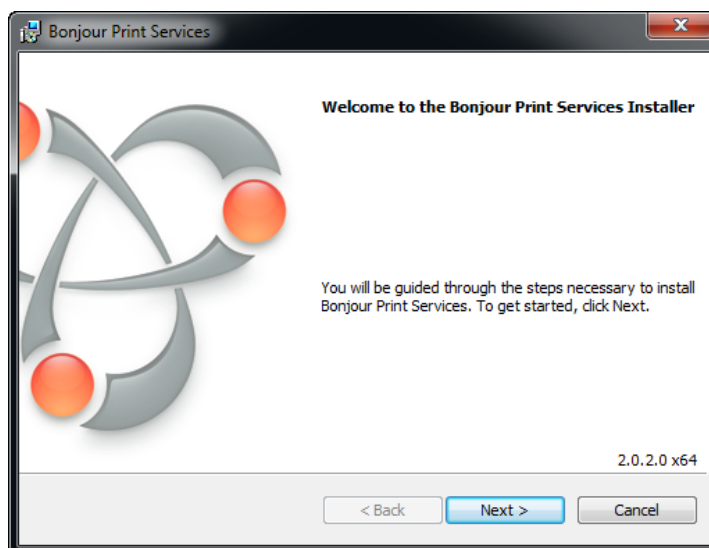


Serviços de impressão Bonjour

É apresentado o assistente Bonjour.

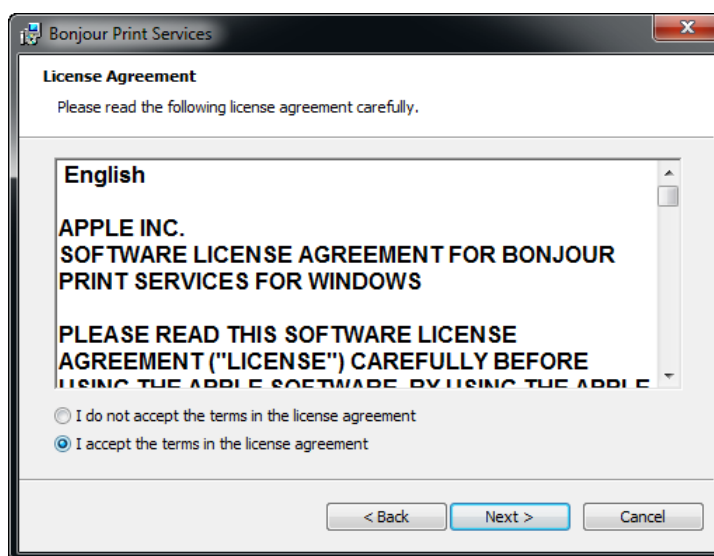
O programa Bonjour serve para configurar e monitorizar as impressoras de rede. O Assistente de Impressoras Bonjour define a sua impressora Brady como uma impressora de rede.

7. Clique em Seguinte.



É apresentado o Contrato de Licença de Utilizador Final da Apple.

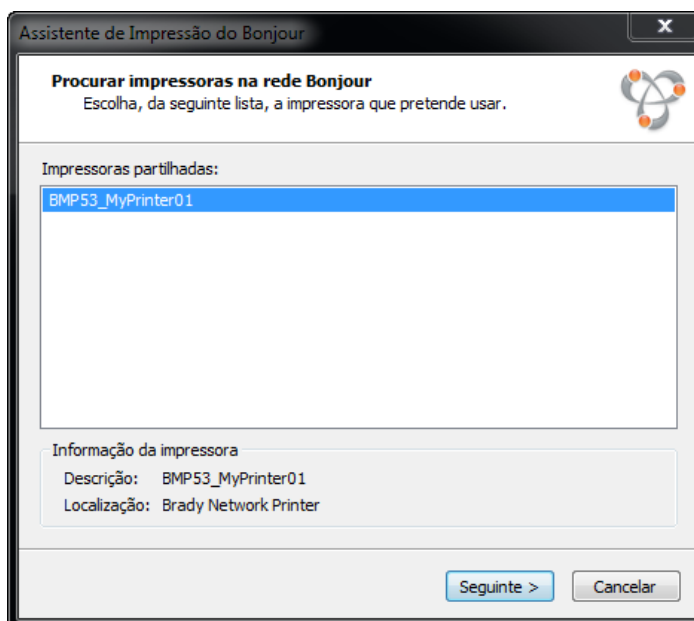
8. Depois de o ler, clique em *Aceito os termos do contrato de licença* e, em seguida, clique em Seguinte para continuar.



9. Clique no nome da impressora de rede atribuída.

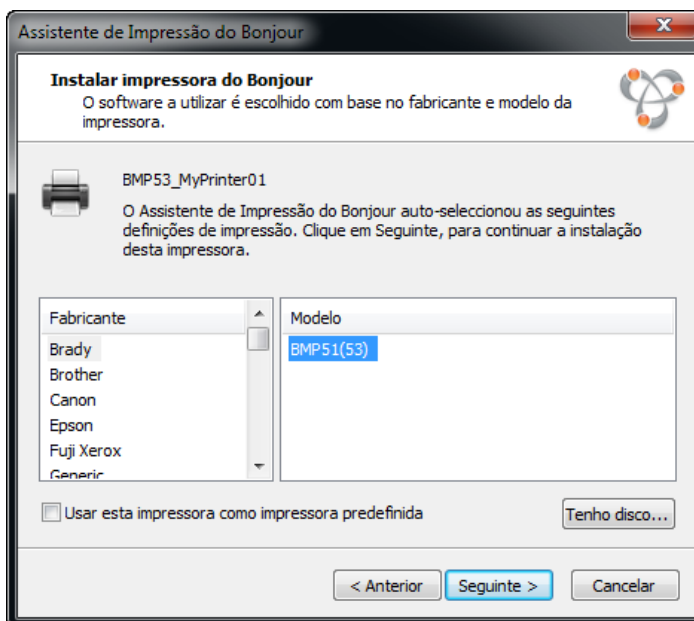
Para uma identificação mais fácil, o nome ou a descrição que indicou acima é apresentado(a) no canto inferior esquerdo do ecrã.

10. Clique em Seguinte.

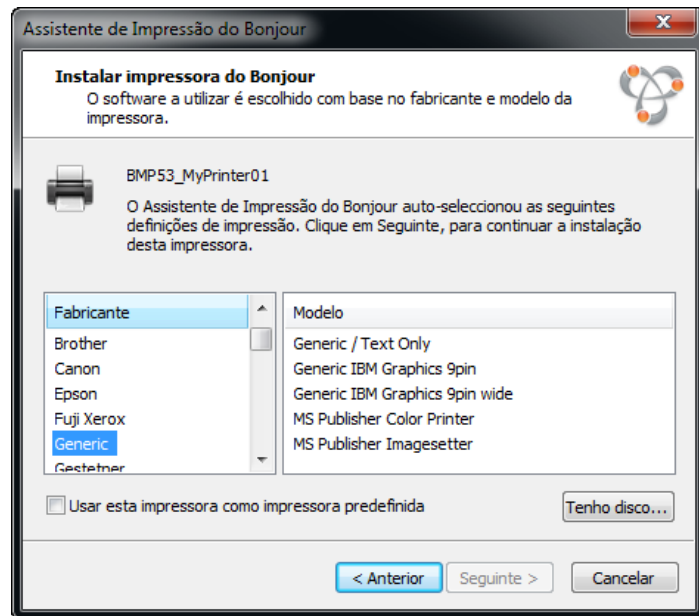


11. No campo *Fabricante*, clique em Brady (os fabricantes estão listados por ordem alfabética); em seguida, no campo *Modelo*, clique na impressora a instalar.

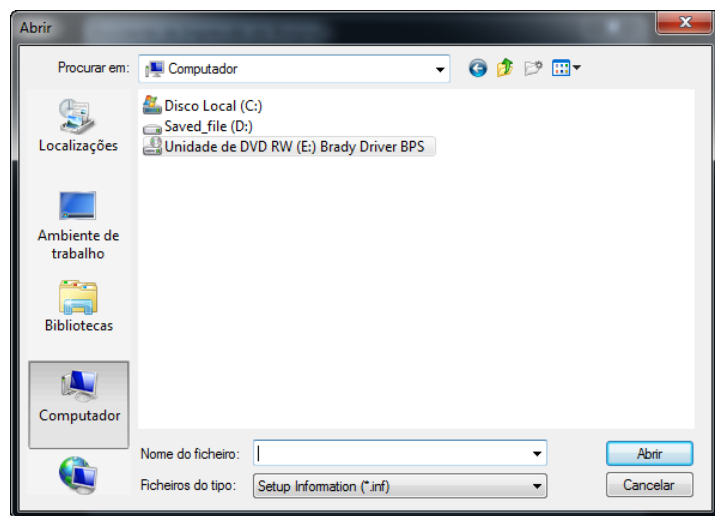
12. Clique em Seguinte.



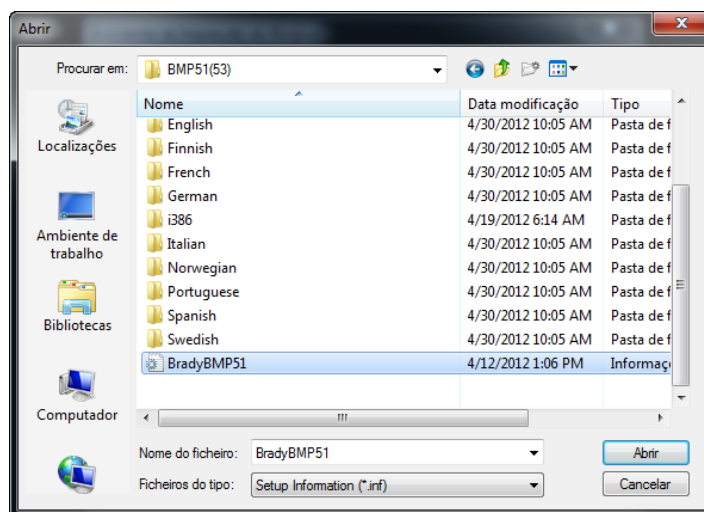
13. Se não encontrar Brady no campo *Fabricante*, clique em *Tenho disco*.



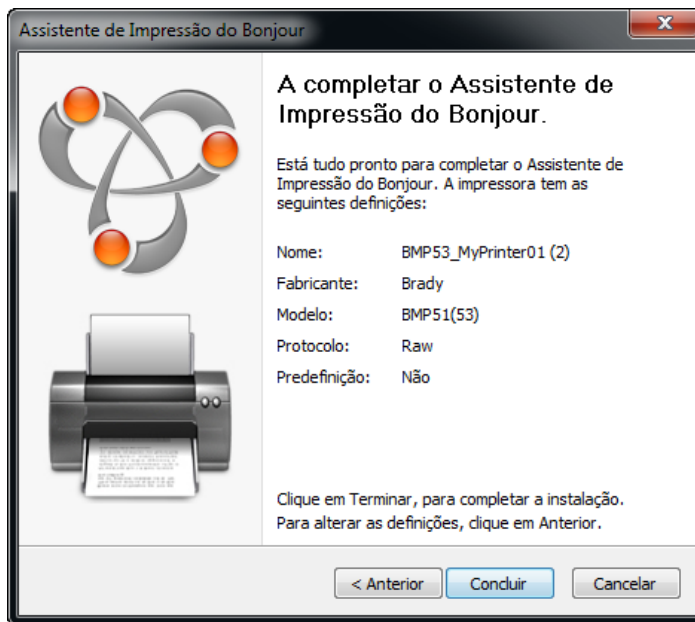
14. Localize o ficheiro .INF relativo ao modelo da sua impressora no CD fornecido.



O exemplo à direita mostra o ficheiro .inf para instalar uma impressora BMP51.



15. Assim que o Assistente de Impressoras Bonjour terminar, clique em Concluir.



- 16.** A Instalação de Impressoras Brady está concluída. Clique em Concluir para sair do assistente.



Instalação apenas do controlador USB

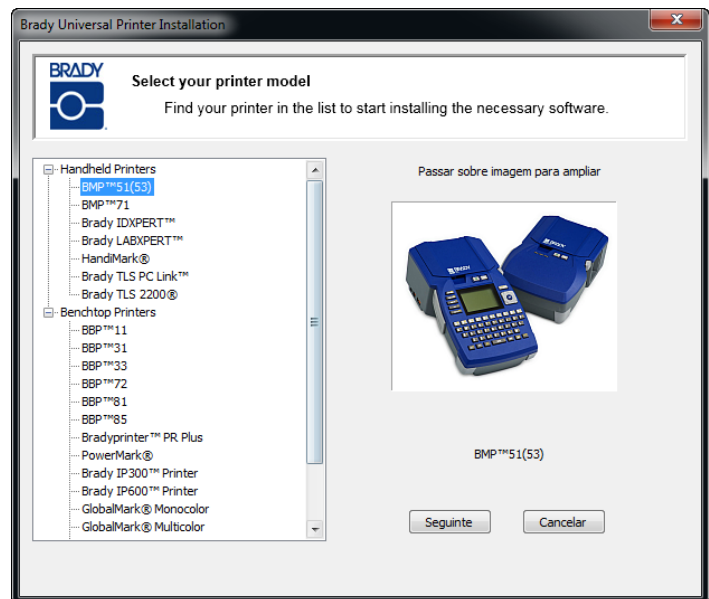
Siga este procedimento de instalação se pretender enviar trabalhos de impressão para a impressora a partir de um computador utilizando apenas o cabo USB.

Para instalar o controlador para a sua impressora Brady e instalar o Utilitário de Configuração da Placa de Rede Brady, execute os passos seguintes.

1. Certifique-se de que a impressora e o computador **NÃO** estão ligados com um cabo USB.
2. Introduza o CD de controladores para impressoras Brady na unidade de CD do computador.

O assistente de instalação inicia-se automaticamente.

3. Ligue a impressora.
4. Clique no modelo de impressora que está a instalar.
5. Clique em Seguinte.



42 | Instalação da Placa de Rede Brady

Instalação apenas do controlador USB

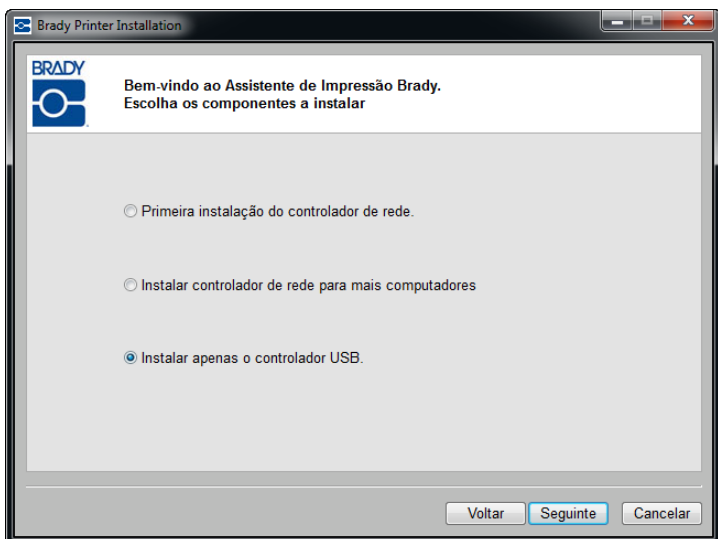
6. Se a impressora e o computador estiverem ligados com um cabo USB, **DESLIGUE-O** agora.

7. Clique em Seguinte.

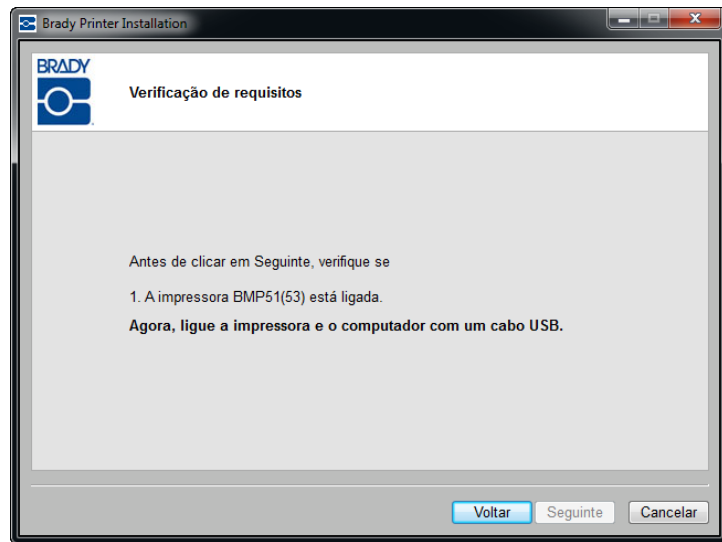


8. Clique no botão rádio *Instalar apenas o controlador USB*.

9. Clique em Seguinte.

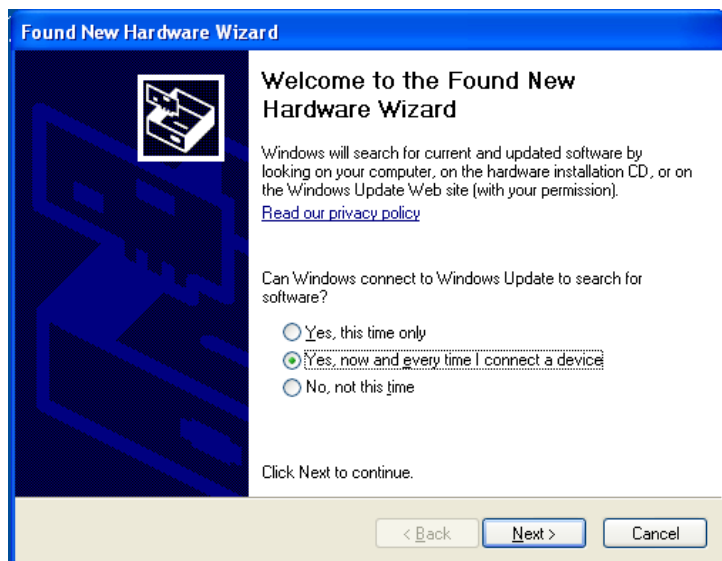


10. Ligue a impressora ao computador com um cabo USB.



Se a informação *Assistente de novo hardware encontrado* aparecer, continue com o Passo 11. Caso contrário avance para o Passo 15 na [página 45](#).

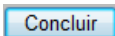
11. Clique no botão de opção *Sim, agora e sempre que ligar um dispositivo* e, em seguida, clique em Seguinte.



12. Clique no botão de opção *Instalar o software automaticamente (recomendado)* e, em seguida, clique em Seguinte.



A instalação prossegue.

13. Quando estiver concluída, clique em Concluir  para fechar o assistente.

14. Clique em Seguinte.



15. Depois de terminada a instalação do Utilitário de configuração da placa de rede Brady e do controlador USB, clique em Concluir.



Primeira instalação para impressão Ad-hoc

Siga este procedimento de instalação para ligar o computador à impressora, sem utilizar fios, e sem um router. Isto é conhecido como ligação peer-to-peer. A ligação sem fios permite-lhe enviar trabalhos de impressão para a impressora a partir do exterior.

A configuração da impressão Ad-hoc requer os seguintes três passos:

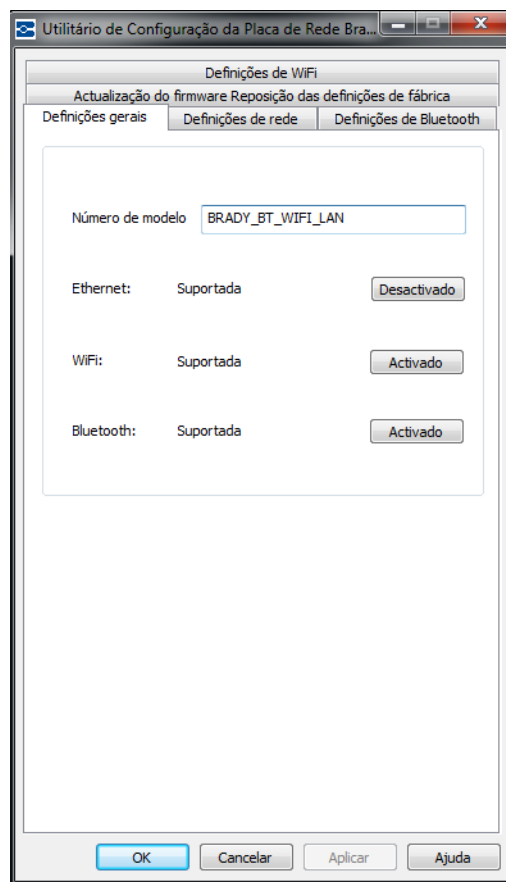
1. instalar o controlador USB;
2. estabelecer uma ligação Ad-hoc;
3. instalar o controlador de rede.

Instalar o controlador USB

Siga os passos 1 a 10 (a partir da [página 41](#)) para a instalação USB.

Estabelecer uma ligação Ad-hoc

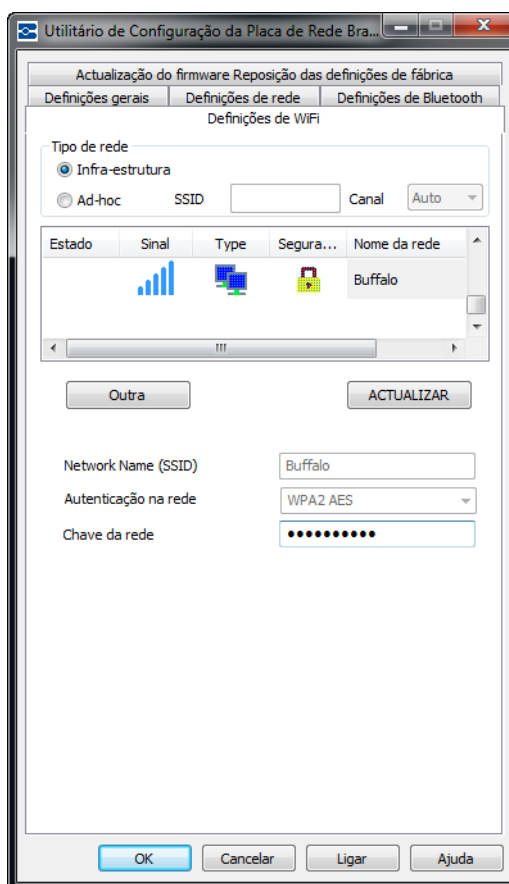
1. Abra o Utilitário de Configuração da Placa de Rede Brady escolhendo **Iniciar>Programas>Brady>Placa de Rede Brady>Utilitário de Configuração da Placa de Rede Brady**.
2. Clique no separador Definições gerais (se não estiver já aberto).
3. Verifique se a opção "Sem fios" está activada. Se estiver desactivada, clique em Activar para activar as definições de WiFi.



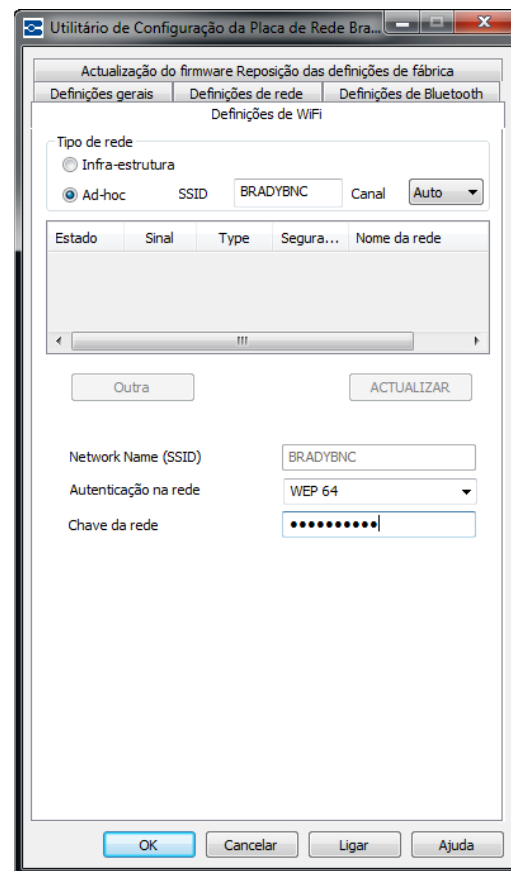
48 | Instalação da Placa de Rede Brady

Primeira instalação para impressão Ad-hoc

A aplicação efectua uma pesquisa de WiFi e apresenta uma lista de redes disponíveis.

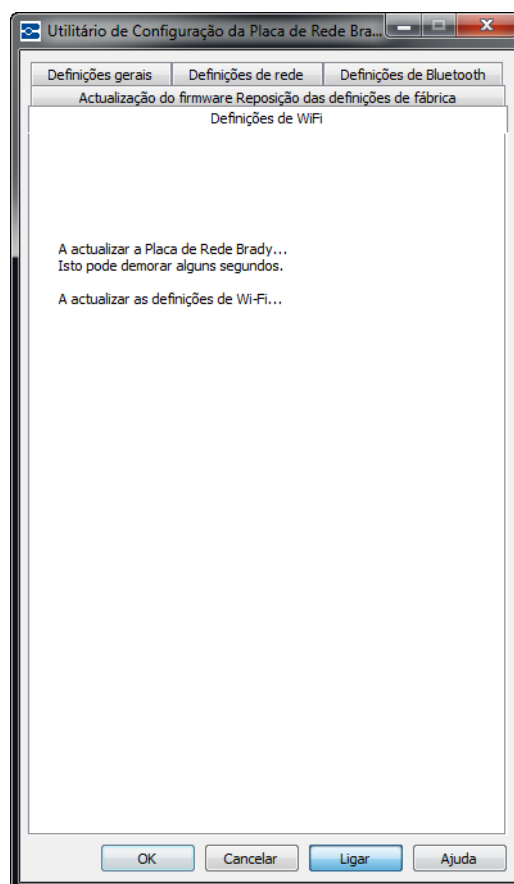


4. Clique no botão rádio *Ad-hoc* e introduza o SSID (nome de rede) e o canal.



5. Clique em Ligar.

As definições de WiFi são actualizadas.



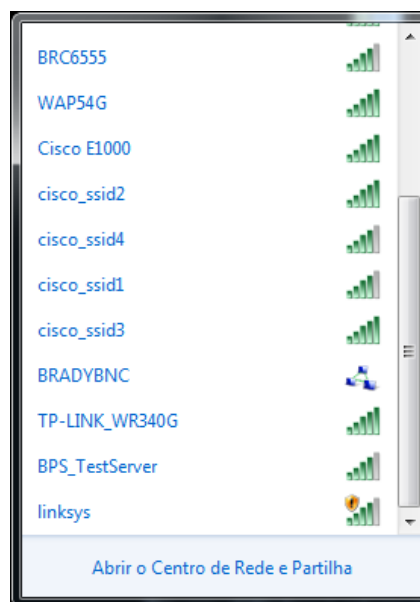
Para ver as redes sem fios detectadas pelo computador:

6. Escolha Iniciar>Ligar a>Ligação de rede sem fios>Ver redes sem fios.

7. Clique no SSID (nome de rede) introduzido anteriormente. O ícone indica que se trata de uma ligação peer-to-peer.

8. Clique em Ligar.

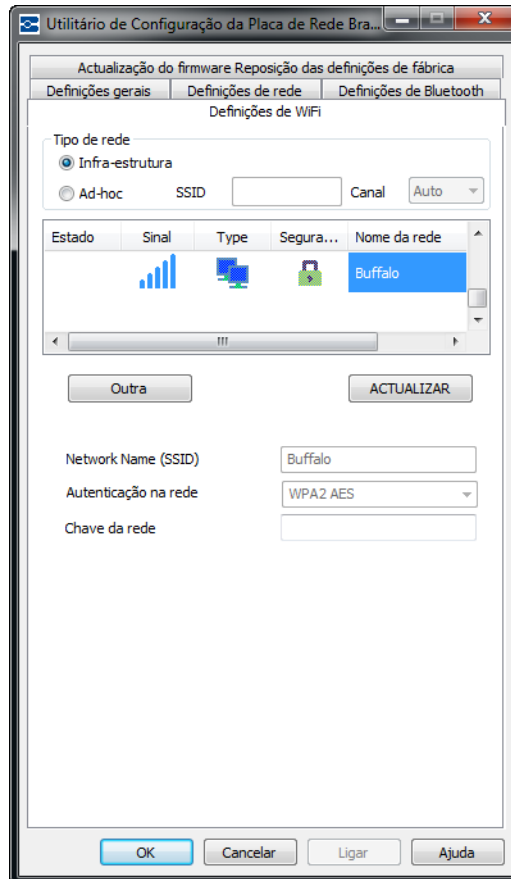
A ligação Ad-hoc é estabelecida.



Nota: O instalador detecta automaticamente se a rede que utilizou é pessoal ou empresarial.

Rede pessoal

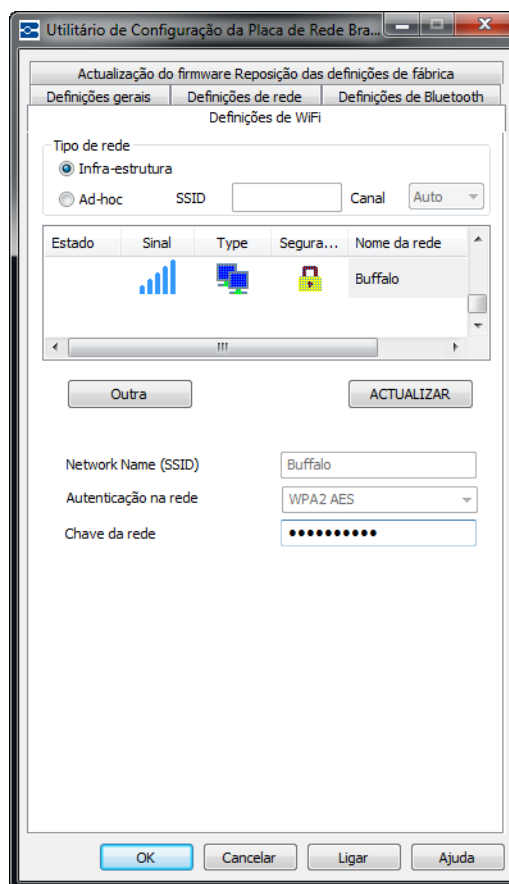
Se a rede sem fios que seleccionou a partir da lista for uma Rede pessoal, a Autenticação da rede e Nome da rede (SSID) são automaticamente apresentados.



9. Introduza a palavra-chave da rede seleccionada.

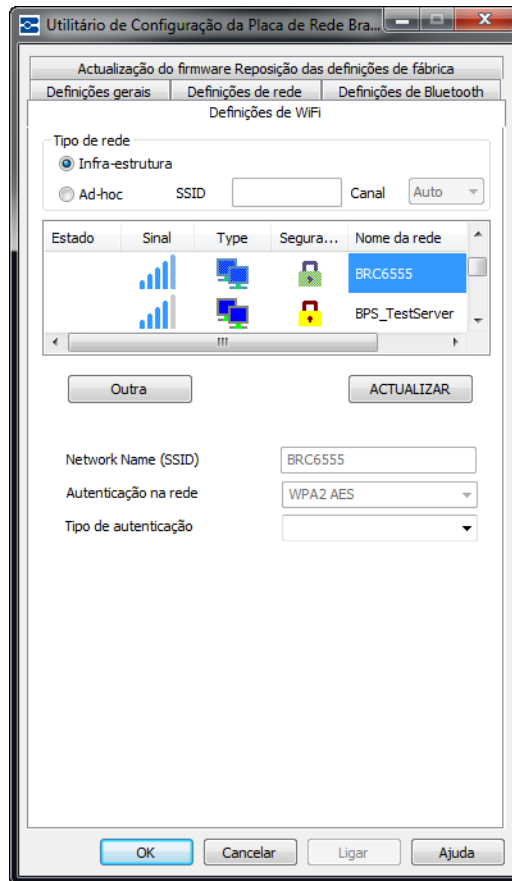
Se não souber qual a palavra-passe ou o tipo de segurança, consulte o administrador da rede.

10. Clique em Ligar.



Rede empresarial

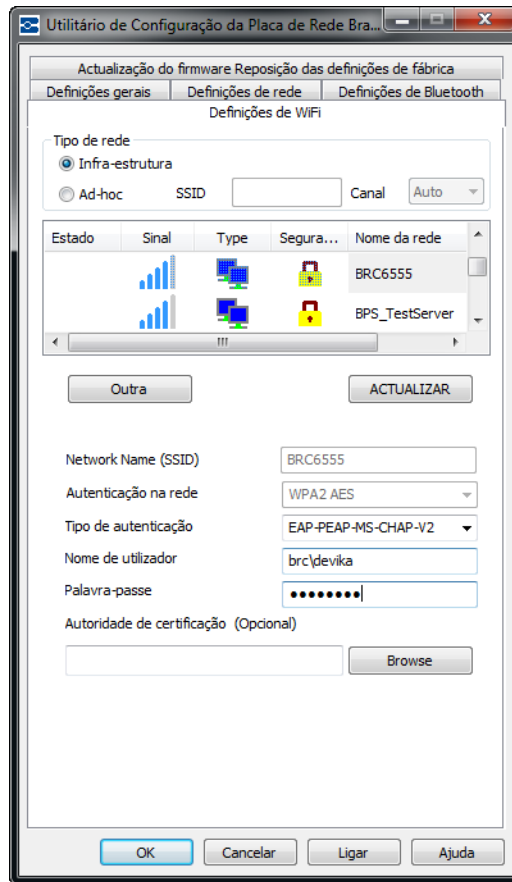
Se a rede sem fios que seleccionou na lista for uma rede empresarial, o Tipo de autenticação, Nome de utilizador e Palavra-passe necessitam de ser fornecidos.



11. Clique na seta para baixo e selecione o *Tipo de autenticação*. (Se não souber o Tipo de autenticação, consulte o administrador da rede.)
12. Introduza o nome de utilizador e palavra-passe, se aplicável. Consulte o administrador da rede para determinar se já lhe foi atribuído um nome de utilizador.

Nota: Dependendo do Tipo de autenticação seleccionado, um Nome de utilizador, Palavra-passe e Certificados podem, ou não, ser requeridos. Consulte a Tabela de autenticação na [página 14](#) para obter mais informações.

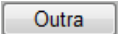
13. Quando tiver concluído, clique em Ligar.

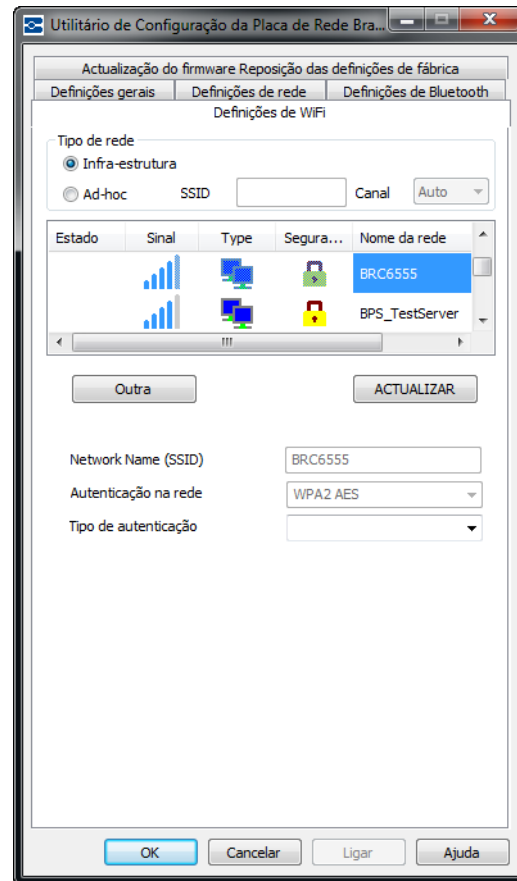


Definir outras redes

Se não vir a sua rede na lista, pode escolher Outra para especificar uma rede manualmente. Deve conhecer o nome da rede (SSID), a segurança aplicada e uma palavra-passe, se aplicável. Pode obter estas informações a partir do administrador da rede.

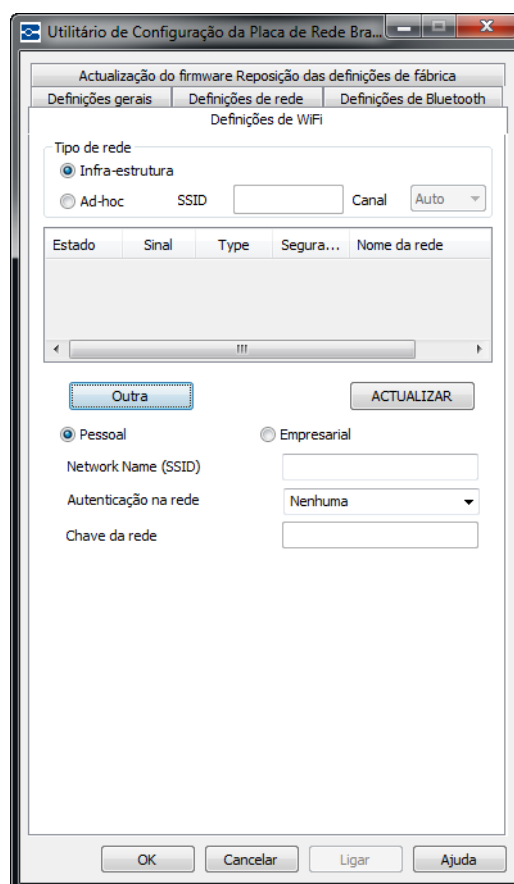
Para atribuir um nome a outra rede:

1. No ecrã Definições de WiFi, clique no botão Outra .



Uma Rede pessoal liga, geralmente, o PC aos dispositivos periféricos, como uma impressora. Uma Rede empresarial interliga vários locais da empresa como locais de produção, departamentos da sede, escritórios remotos e lojas, para partilha de recursos informáticos.

2. No ecrã de rede *Outra*, clique no botão de rádio, Rede pessoal ou Rede empresarial, que melhor descreve esta rede.



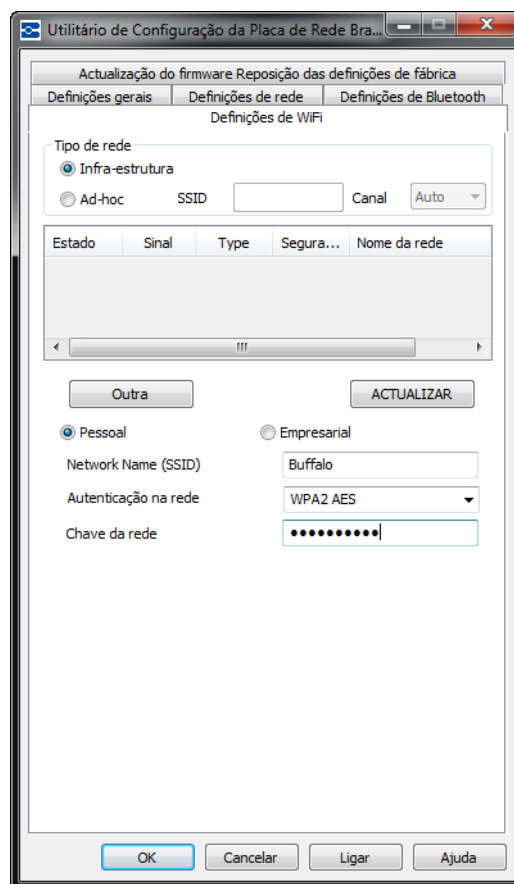
Rede pessoal

3. Se clicar em Rede pessoal, introduza o Nome da rede (SSID).
4. No campo Segurança, clique na seta para baixo e selecione o tipo de segurança.

Dependendo da Segurança seleccionada, pode ou não ter que indicar uma Palavra-passe. Consulte as tabelas de Tipos e métodos de autenticação na [página 14](#) para obter mais informações.

Nota: Não necessita de indicar um Tipo de autenticação para Redes pessoais.

5. Continue com o Passo 10, na [página 58](#).

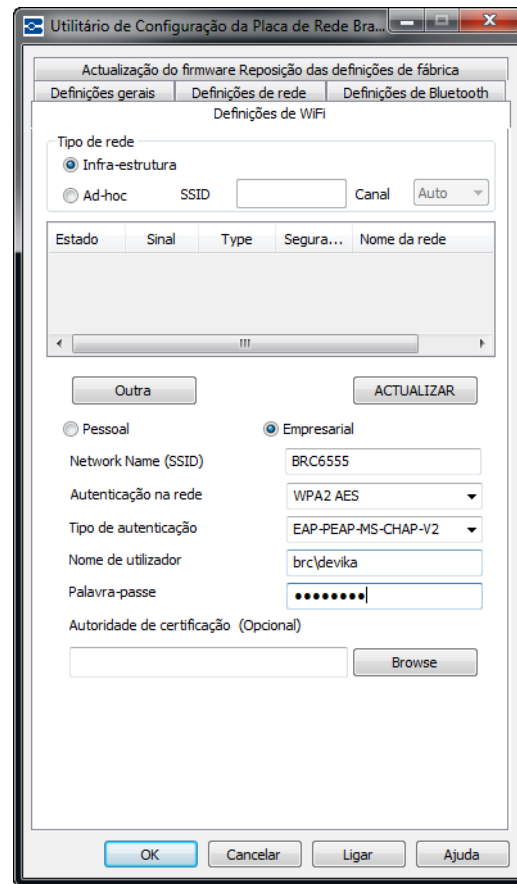


Rede empresarial

Se clicar em Rede empresarial:

6. Introduza o Nome da rede (SSID).
7. No campo Segurança, clique na seta para baixo e selecione o tipo de segurança.
8. Clique na seta para baixo e selecione o *Tipo de autenticação*. (Se não souber o Tipo de autenticação, consulte o administrador da rede.)
9. Introduza o nome de utilizador e palavra-passe, se aplicável. Consulte o administrador da rede para determinar se já lhe foi atribuído um nome de utilizador.

Nota: Dependendo do Tipo de autenticação seleccionado, um Nome de utilizador, Palavra-passe e Certificados podem, ou não, ser requeridos. Consulte a Tabela de autenticação na [página 14](#) para obter mais informações.



10. Quando tiver concluído, clique em Ligar.

Instalar o controlador de rede

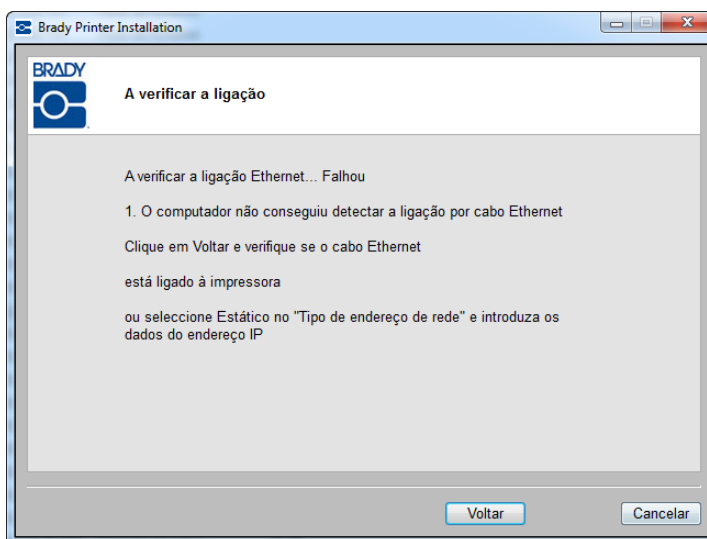
Para instalar os controladores de rede, consulte os Passos 1 a 13 relativos à instalação de computadores adicionais (a partir da [página 34](#)).

Resolução de problemas

Falha da ligação Ethernet

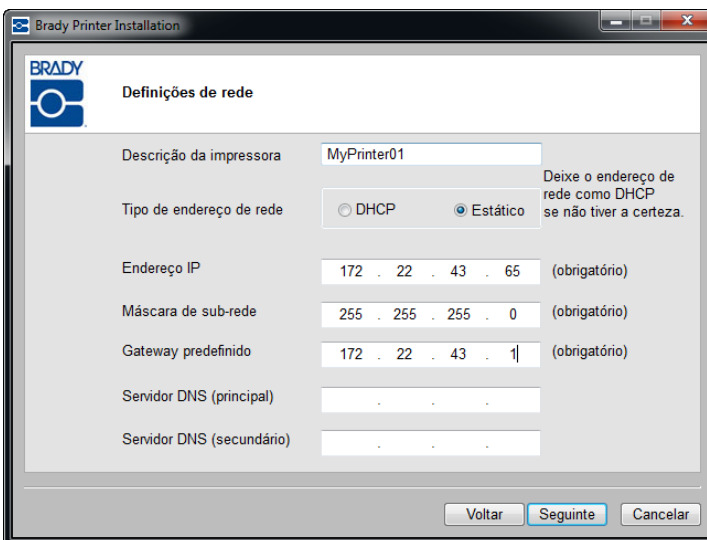
A falha da ligação de Ethernet pode dever-se a duas razões:

1. O cabo de Ethernet não está ligado à impressora.
2. o computador e a impressora não estão ligados à mesma rede.



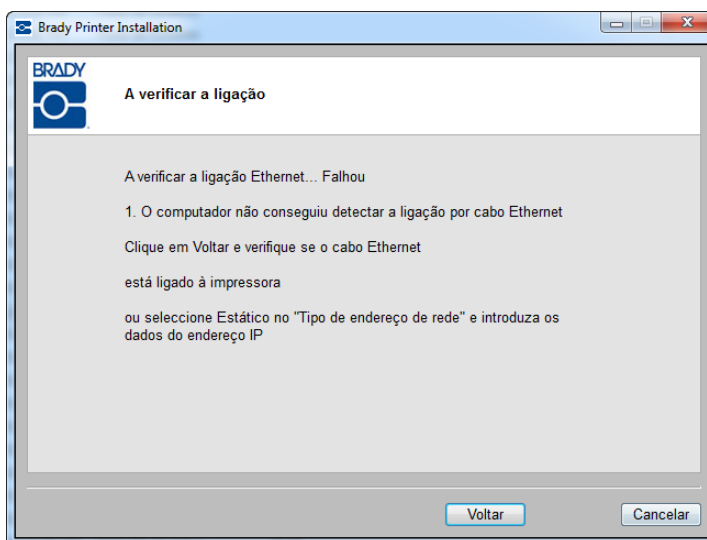
O cabo de Ethernet não está ligado

1. Clique em Voltar.
2. Certifique-se de que o cabo de Ethernet está ligado à impressora.
3. Clique em Seguinte.



O computador e a impressora não estão ligados à mesma rede

1. Clique em Voltar.

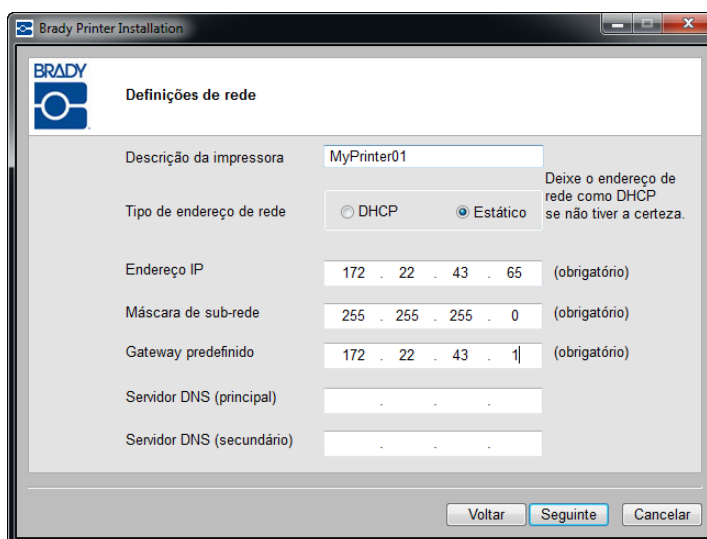


2. Verifique se a impressora e o computador estão ligados à mesma rede. (Consulte o diagrama de ligações na [página 28](#).)

OU

Clique no Tipo de endereço de rede: Estático e introduza os detalhes do endereço de IP.

Nota: Se a mesma rede tiver sido seleccionada e se a ligação continuar a falhar, a firewall está a bloquear a ligação. Neste caso, contacte o administrador da rede.



Falha da ligação WiFi

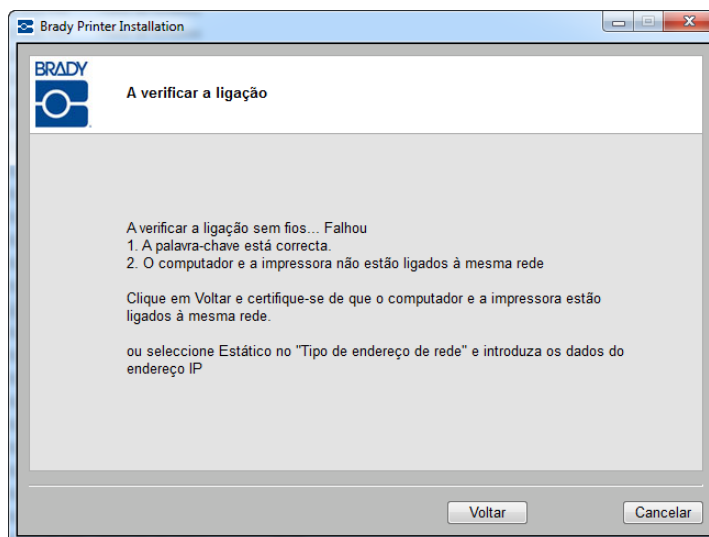
A falha da ligação WiFi pode dever-se a duas razões:

1. o computador e a impressora não estão ligados à mesma rede;
2. foi introduzida uma palavra-chave ou um código de segurança errados.

O computador e a impressora não estão ligados à mesma rede

Rede pessoal

1. Clique em Voltar.

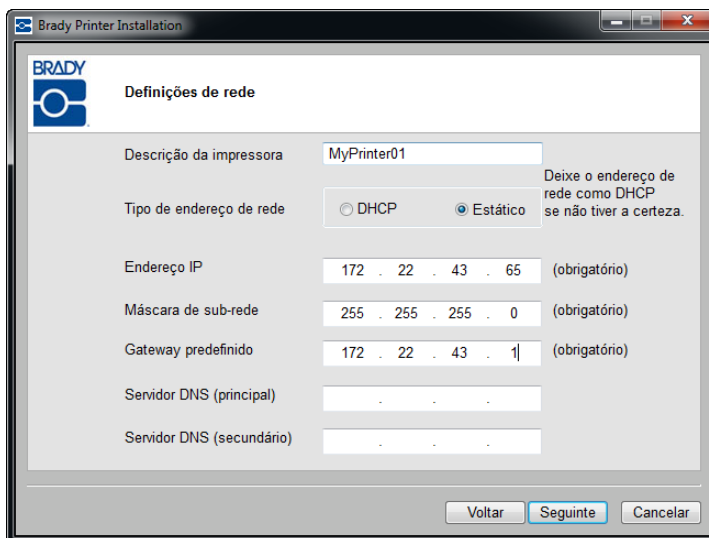


2. Verifique se a impressora e o computador estão ligados à mesma rede. (Consulte o diagrama de ligações na [página 28](#).)

OU

Clique no Tipo de endereço de rede: Estático e introduza os detalhes do endereço de IP.

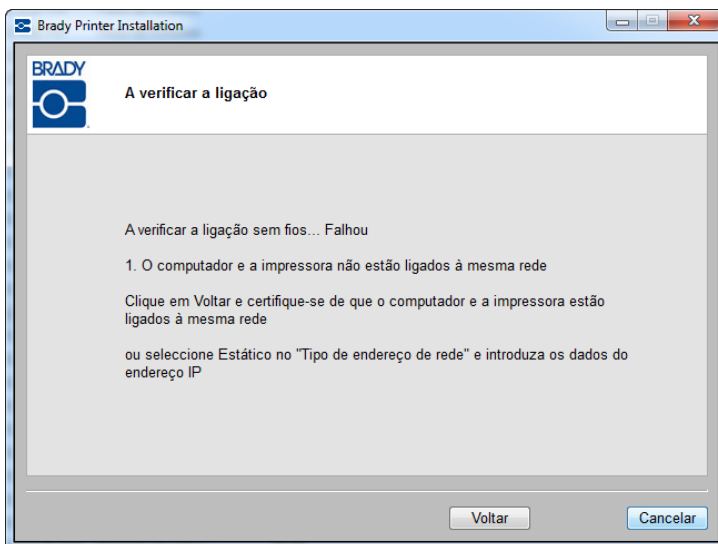
Nota: Se a mesma rede tiver sido seleccionada e se a ligação continuar a falhar, a firewall está a bloquear a ligação. Neste caso, contacte o administrador da rede.



3. Quando tiver concluído, clique em Seguinte.

Rede empresarial:

1. Clique em Voltar.

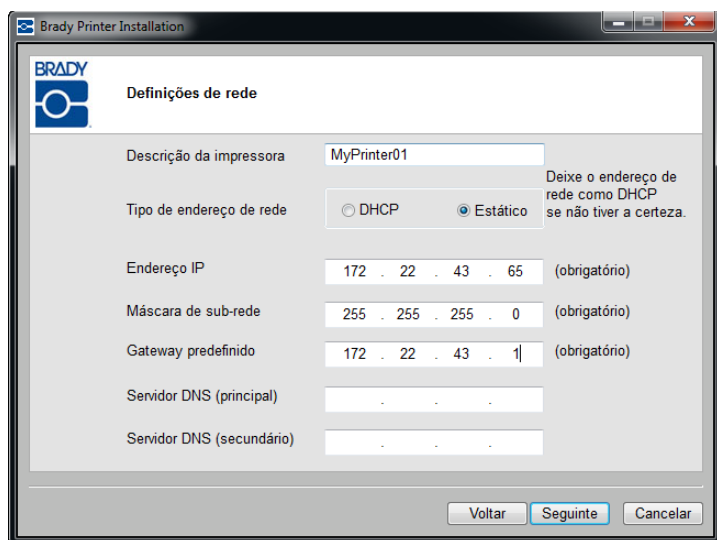


2. Verifique se a impressora e o PC estão na mesma rede.

OU

Clique no Tipo de endereço de rede: Estático e introduza os detalhes do endereço de IP.

3. Quando tiver concluído, clique em Seguinte.

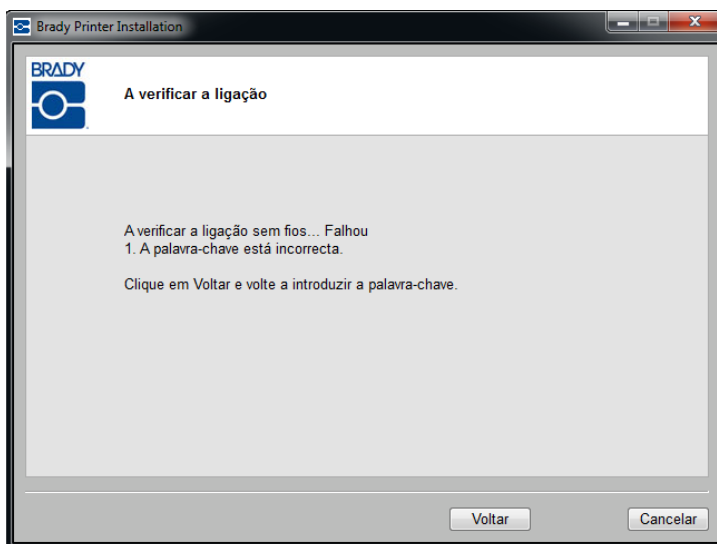


Palavra-chave ou código de segurança errados

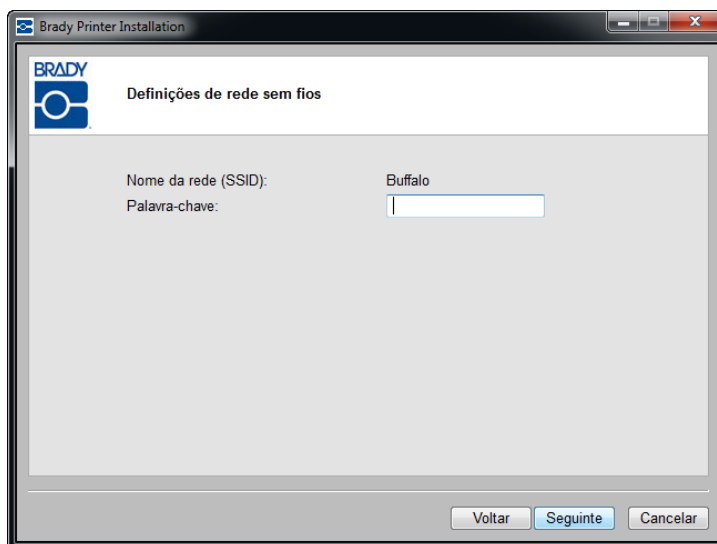
Rede pessoal

Se a ligação a uma rede pessoal falhar, a palavra-passe deve ser incorrecta. Para corrigir a palavra-passe:

1. Clique em Voltar.

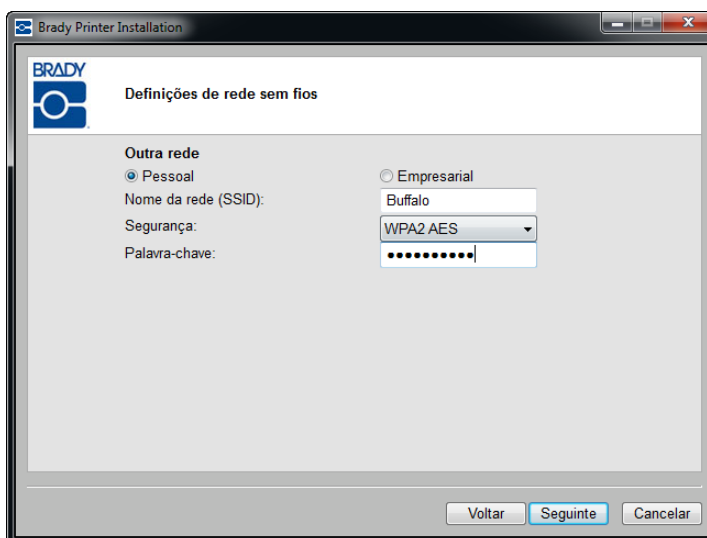


2. Volte a introduzir a palavra-chave correcta.



Nota: Se tiver seleccionado "Outra" na lista de redes, terá também de introduzir o código de segurança.

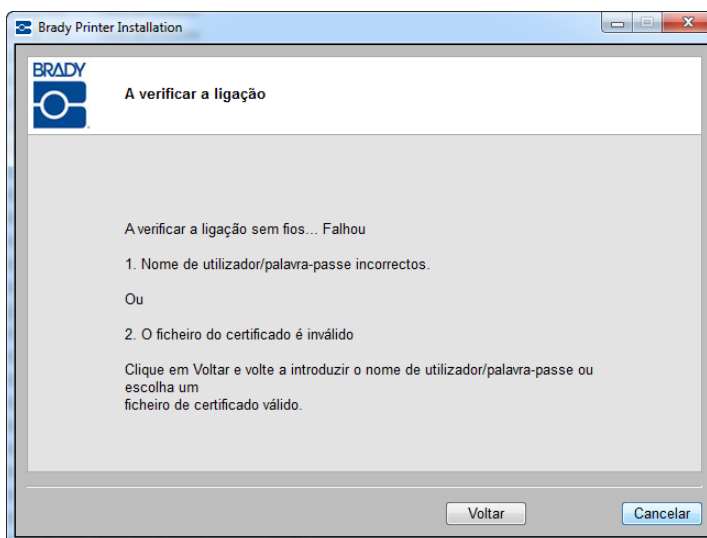
3. Clique em Seguinte para continuar a instalação.



Rede empresarial

Se a ligação a uma Rede empresarial falhar, o Nome de utilizador, Palavra-passe ou Certificados podem ser incorrectos. Para corrigir a palavra-passe e/ou certificados:

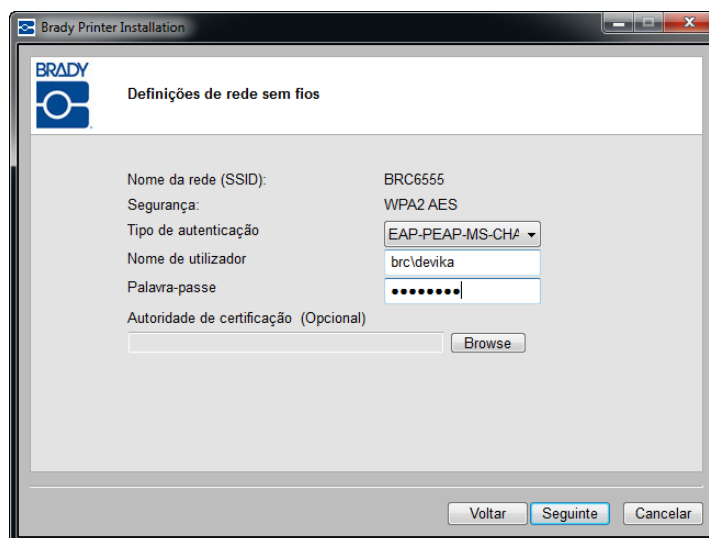
1. Clique em Voltar.



2. Volte a introduzir o nome de utilizador ou palavra-passe correcto.

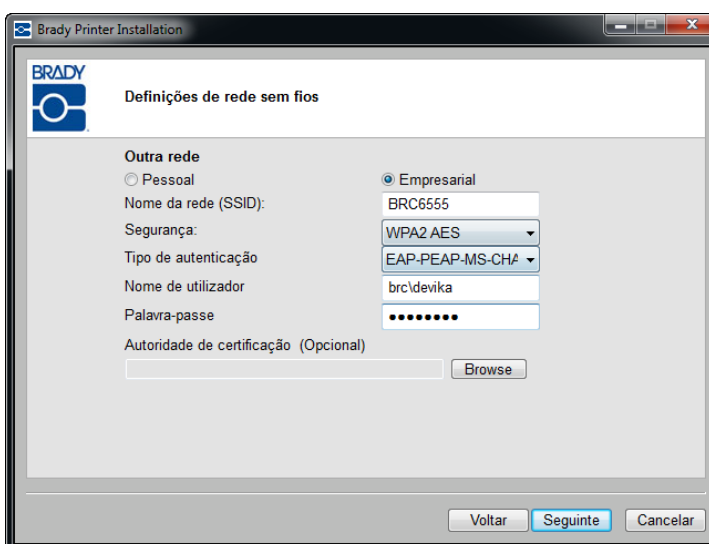
OU, dependendo do Tipo de autenticação seleccionado, se forem requeridos certificados:

3. Volte a introduzir as autorizações de certificado.
4. Clique em Seguinte para continuar a instalação.



Nota: Se tiver seleccionado "Outra" na lista de redes, terá também de introduzir o código de segurança.

5. Clique na seta para baixo no campo Segurança e selecione a segurança correcta.
6. Clique em Seguinte para continuar a instalação.



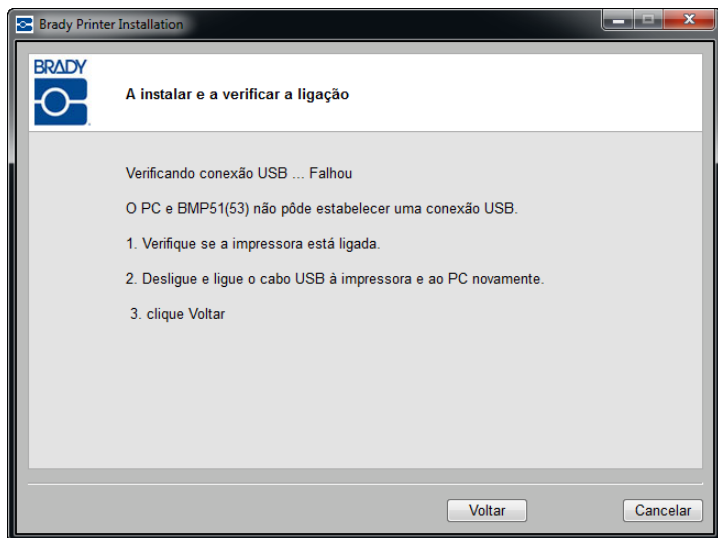
Falha da ligação USB

A falha da ligação USB pode dever-se a duas razões:

- a impressora está desligada;
- o cabo USB não está ligado.

Se a ligação tiver falhado:

1. Clique em Voltar.
2. Ligue a impressora e conecte o cabo USB.
3. Clique em Seguinte para voltar a tentar.



Utilitário de Configuração da Placa de Rede Brady

Quando os controladores de rede são instalados, é também instalado um utilitário de configuração que é colocado automaticamente em Programas, acessível a partir do botão Iniciar do Windows. Use o utilitário de configuração para ajustar ou alterar a configuração instalada inicialmente.

Para aceder ao utilitário:

1. Escolha **Iniciar>Programas>Brady>Placa de Rede Brady>Utilitário de Configuração da Placa de Rede Brady**.

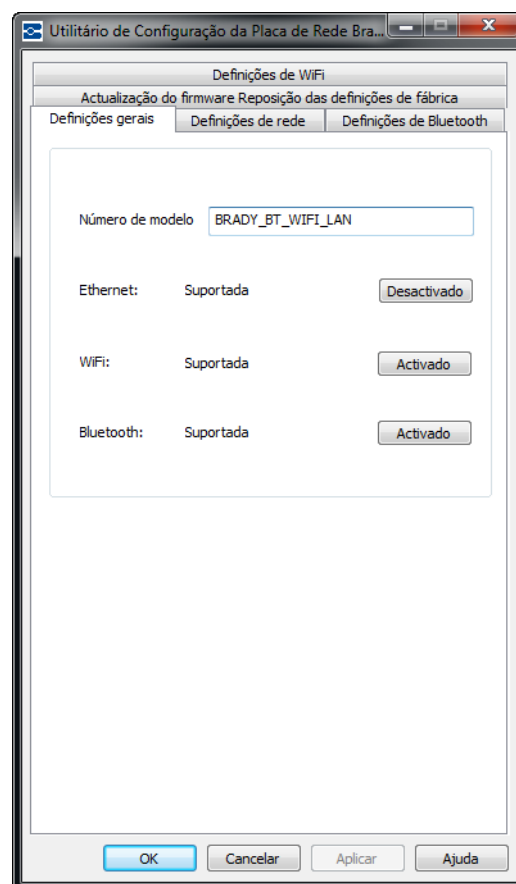
É apresentada uma caixa de diálogo com vários separadores.

Definições gerais

No separador Definições gerais, é identificado o número de modelo da Placa de Rede Brady e são listadas as ligações definidas previamente.

Para alterar o estado de cada configuração suportada:

1. Clique no botão Activado/Desactivado para mudar o estado actual da ligação.
2. Clique em OK para aceitar as alterações e sair da caixa de diálogo.



Definições de rede

O separador Definições de rede apresenta o nome exclusivo que deu à impressora e o Tipo de endereço que ela utiliza.

DHCP é a definição recomendada.

Se seleccionar Estático, será necessário preencher os campos Endereço IP, Máscara de sub-rede e Gateway predefinido.

The screenshot shows a window titled 'Utilitário de Configuração da Placa de Rede Brady'. It has three tabs: 'Definições gerais', 'Definições de rede' (selected), and 'Definições de Bluetooth'. The 'Definições de rede' tab contains the following fields:

- Actualização do firmware Reposição das definições de fábrica
- Definições de WiFi
- Definições gerais
- Definições de rede
- Definições de Bluetooth
- Descrição da impressora: MyPrinter01
- Tipo de endereço de rede: ☒ DHCP, ☐ Static
- Endereço IP *: 10 . 192 . 119 . 31
- Máscara de sub-rede *: 255 . 255 . 255 . 0
- Gateway predefinido *: 10 . 192 . 119 . 1
- Servidor DNS (principal): 172 . 22 . 40 . 180
- Servidor DNS (secundário): 172 . 22 . 10 . 180
- * = Campos obrigatórios
- Buttons: OK, Cancelar, Aplicar, Ajuda

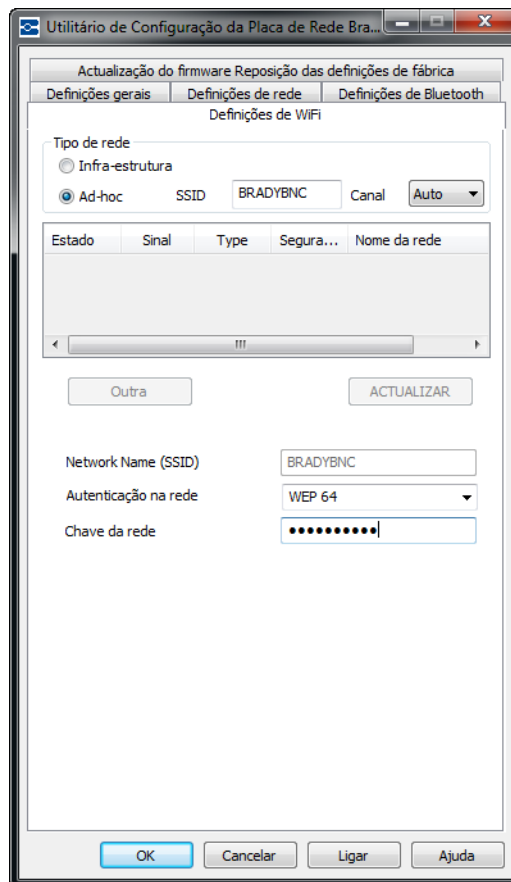
Definições de WiFi

O separador Definições de WiFi apresenta:

- o tipo de rede - Infra-estrutura versus Ad-hoc.
- a rede ligada actualmente.
- as definições de segurança da rede ligada actualmente.

A opção Infra-estrutura é seleccionada quando a impressora está ligada ao computador através de um router. Este é caso mais comum.

1. Seccione Ad-hoc se pretender ligar a impressora ao computador directamente sem utilizar um router.
2. Introduza o SSID (nome da rede) e o canal.

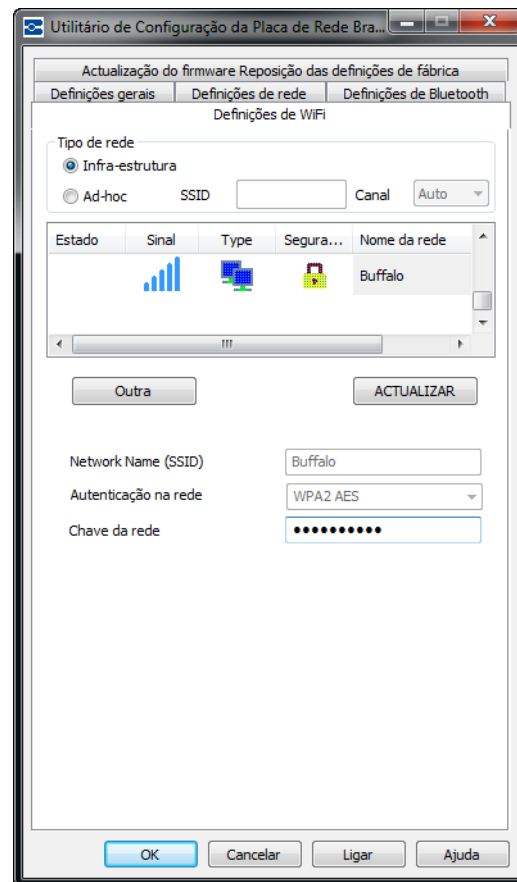


3. Na lista apresentada, clique numa rede.

Rede pessoal

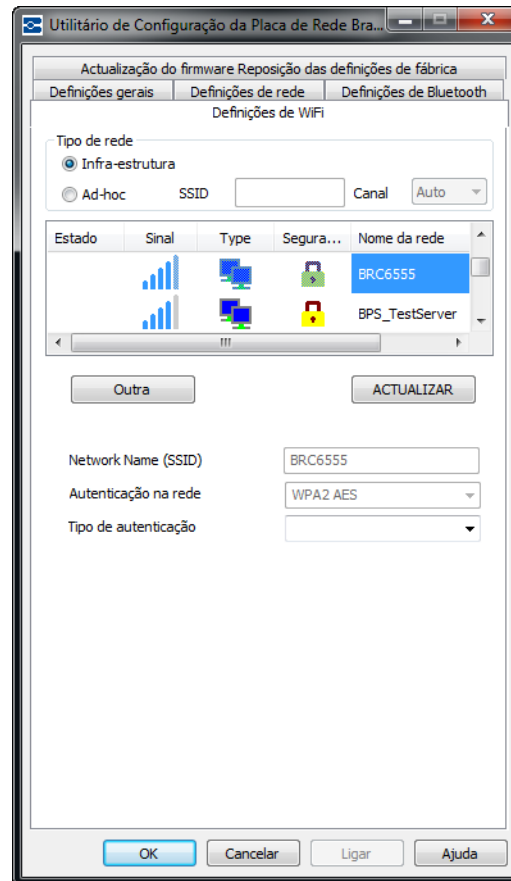
Se a rede que seleccionou na lista for uma Rede pessoal, deve introduzir a respectiva palavra-passe. O campo Nome da rede (SSID) não pode ser editado.

4. Clique no campo Chave da rede e introduza a palavra-passe.
5. Quando tiver concluído, clique em Ligar.

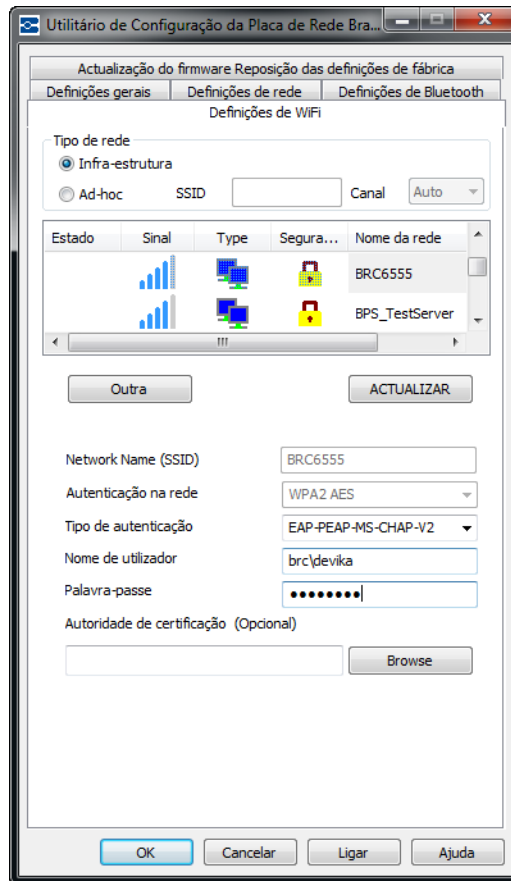


Rede empresarial

Se a rede que seleccionou na lista for uma Rede empresarial, deve introduzir o Tipo de autenticação, o Nome de utilizador e a Palavra-passe. Os campos Nome da rede (SSID) e Autenticação da rede não podem ser editados.

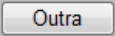


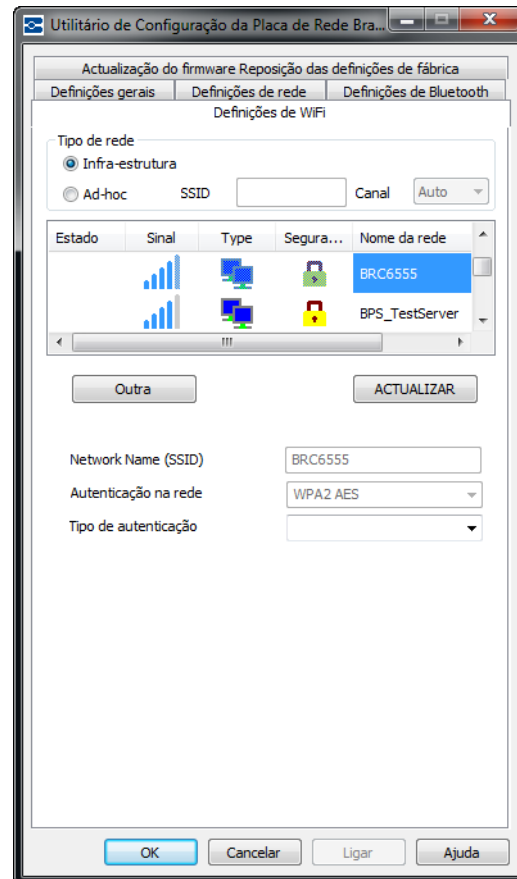
6. Clique na seta para baixo no campo Tipo de autenticação e seleccione o Tipo de autenticação correcto.
7. Clique no campo *Nome de utilizador* e introduza o nome de utilizador.
8. Clique no campo *Palavra-passe* e introduza a palavra-passe.
9. Quando tiver concluído, clique em Ligar.



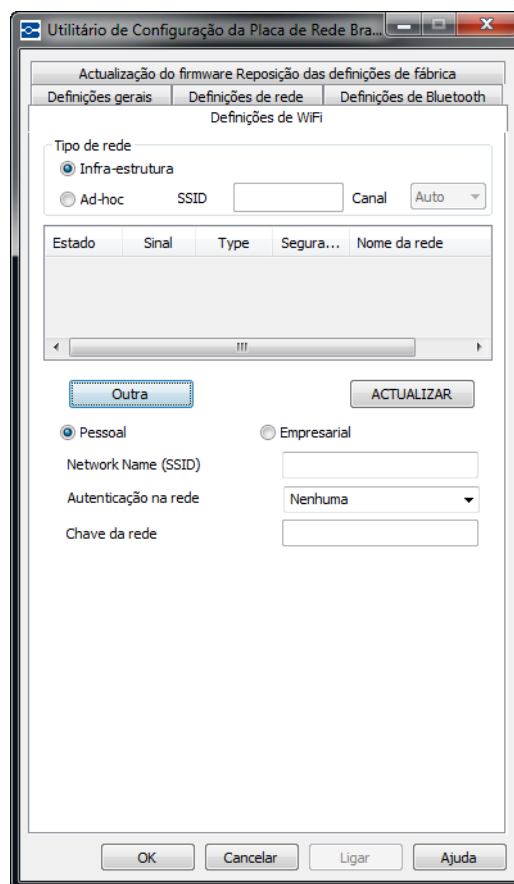
Definir outras redes

Para definir uma rede diferentes que não esteja na lista:

10. Clique no botão Outra .



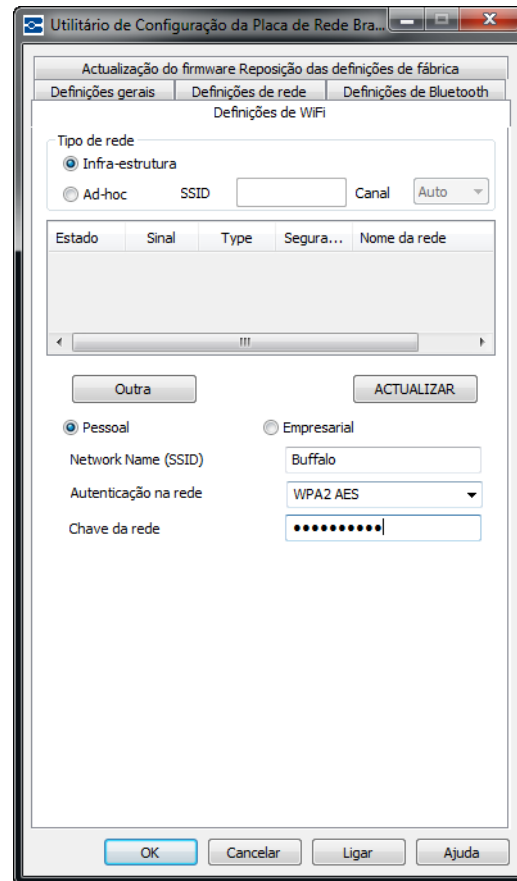
11. No ecrã de rede *Outra*, clique no botão de rádio, Rede pessoal ou Rede empresarial, que melhor descreve esta rede.



Rede pessoal

1. Se clicar em Rede pessoal, introduza o Nome da rede (SSID).
2. Clique na seta para baixo e seleccione o *Tipo de autenticação*. (Se não souber o Tipo de autenticação, consulte o administrador da rede.)

Dependendo da Autenticação da rede seleccionada, pode ou não ter que indicar uma Chave da rede. Consulte as tabelas de Tipos e métodos de autenticação na [página 14](#) para obter mais informações.



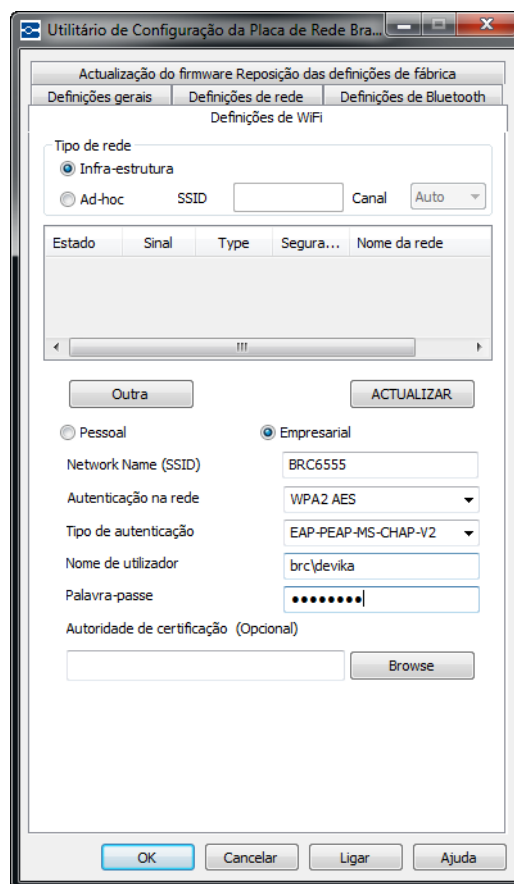
Rede empresarial

Se clicar em Rede empresarial:

3. Introduza o Nome da rede (SSID).
4. No campo *Autenticação da rede*, clique na seta para baixo e seleccione o método de autenticação.
5. No campo *Tipo de autenticação*, clique na seta para baixo e seleccione o *Tipo de autenticação*. (Se não souber o Tipo de autenticação, consulte o administrador da rede.)
6. Introduza o nome de utilizador e palavra-passe, se aplicável. Consulte o administrador da rede para determinar se já lhe foi atribuído um nome de utilizador.

Nota: Dependendo do Tipo de autenticação seleccionado, um Nome de utilizador, Palavra-passe e Certificados podem, ou não, ser requeridos. Consulte a Tabela de autenticação na [página 14](#) para obter mais informações.

7. Clique em Ligar para aceitar as alterações.



Definições de Bluetooth

O separador Definições de Bluetooth apresenta o nome de dispositivo genérico da configuração de Bluetooth instalada na impressora. O nome predefinido é Brady. Pode alterar o nome e o PIN predefinidos neste separador.

Nome

Para alterar o nome:

1. No campo *Nome do dispositivo*, realce o nome predefinido e, em seguida, introduza um nome novo directamente sobre o texto realçado.

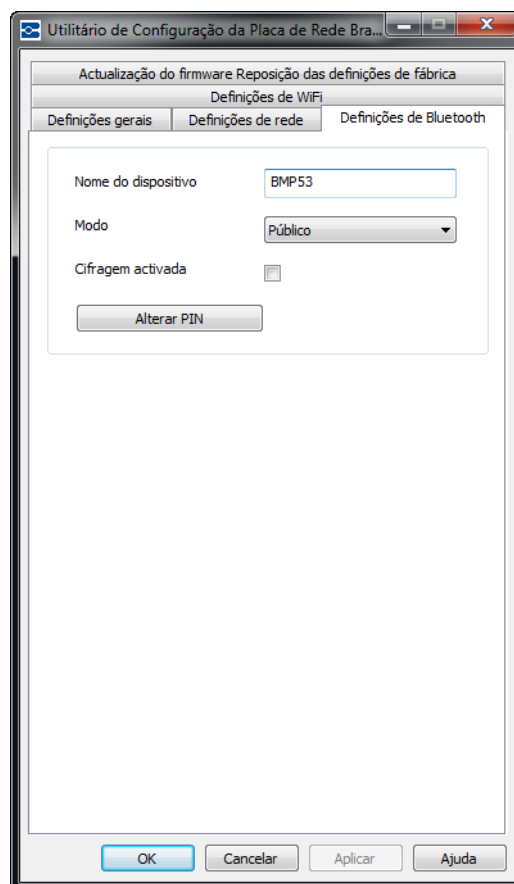
Modo

1. Clique na seta para baixo no campo *Modo* para seleccionar o modo de funcionamento da ligação Bluetooth.

Público - a Placa de Rede Brady pode ser detectada e acedida por qualquer dispositivo Bluetooth.

Privado - a Placa de Rede Brady não pode ser detectada por dispositivos Bluetooth novos mas pode ser acedida.

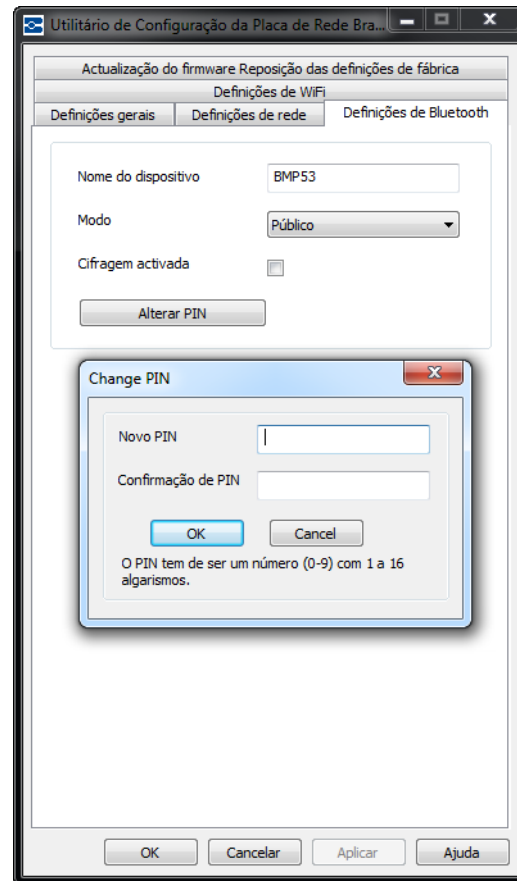
Desactivado - a Placa de Rede Brady não pode ser detectada nem acedida.



PIN

É necessário um código PIN para a ligação Bluetooth. O código PIN predefinido é 0000. Se pretender alterar o PIN:

1. Clique no botão **Alterar PIN**.
2. No campo *Novo PIN*:, introduza o PIN novo.
3. No campo *Confirmação de PIN*:, volte a introduzir o PIN novo.
4. Clique em **OK** para aceitar o novo PIN e volte ao separador **Definições de Bluetooth**.
5. Volte a clicar em **OK** para aceitar as alterações e sair da caixa de diálogo.



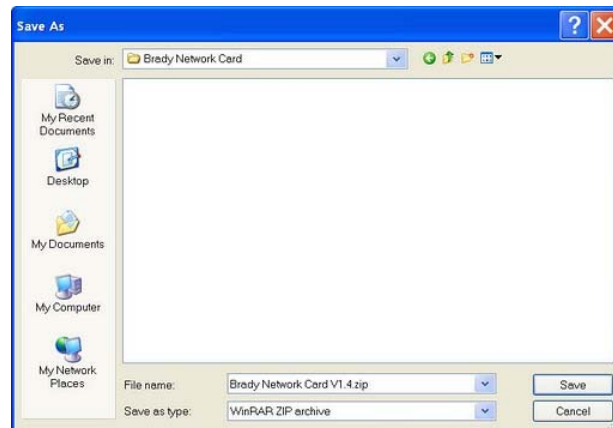
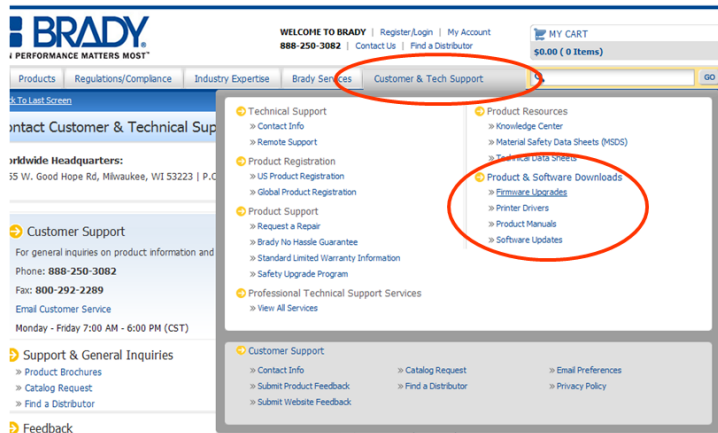
Actualização do firmware/reposição das definições de fábrica

Sempre que estejam disponíveis novas versões do firmware, pode actualizar a Placa de Rede Brady através do separador Actualização do firmware/reposição das definições de fábrica do Utilitário de Configuração.

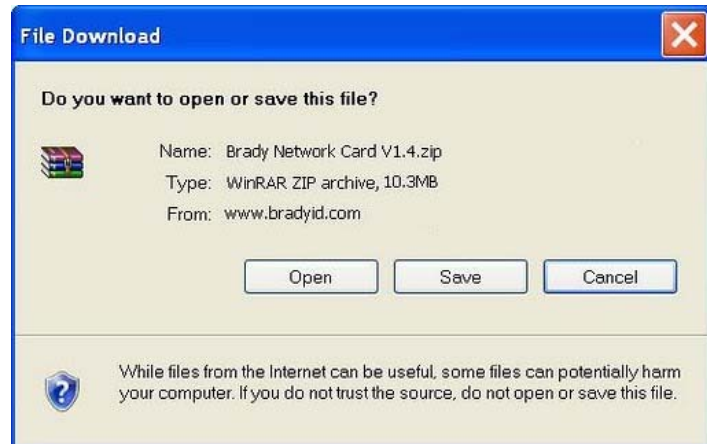
Para actualizar o firmware:

1. Aceda ao website da Brady em www.bradyid.com.
2. Clique em Customer & Tech Support (Apoio ao cliente e assistência técnica).
3. Em Product & Software Downloads (Transferências de produtos e software), clique na actualização do firmware da Placa de rede Brady.
4. Na lista apresentada, clique na actualização que pretende transferir e, em seguida, clique no botão

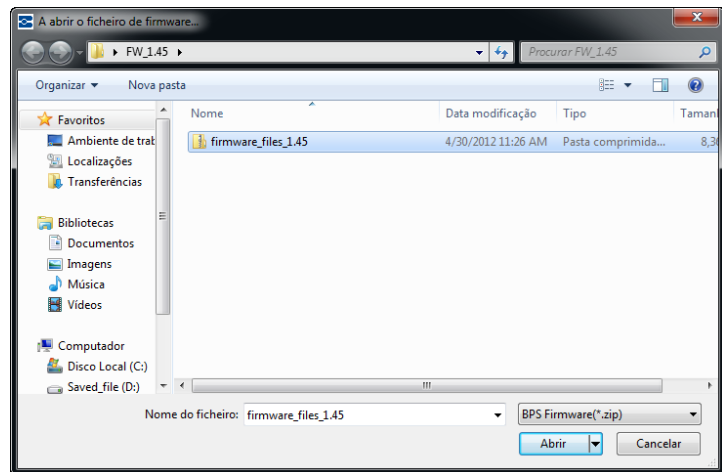
BEGIN DOWNLOAD >>



5. No ecrã Transferência de ficheiros, clique em Guardar.



6. Utilizando os procedimentos padrão do Windows, determine o directório onde pretende guardar os dados da transferência.



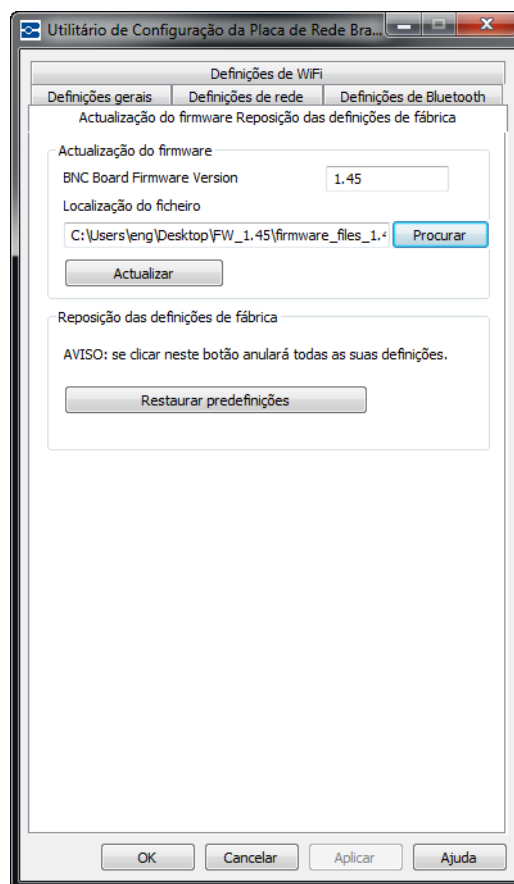
7. No separador Actualização do firmware do Utilitário de Configuração, clique no botão **Procurar**.

8. Localize o directório onde guardou o ficheiro ZIP transferido e depois clique em Abrir.

9. No separador Actualização do firmware/reposição das definições de fábrica, clique no botão **Actualizar**.

A informação do programa de actualização é instalada automaticamente no sistema.

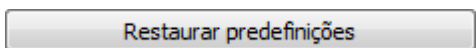
10. Clique em OK para aceitar as alterações e sair da caixa de diálogo.



Reposição das definições de fábrica

Se pretender restaurar as definições de fábrica originais (predefinições):

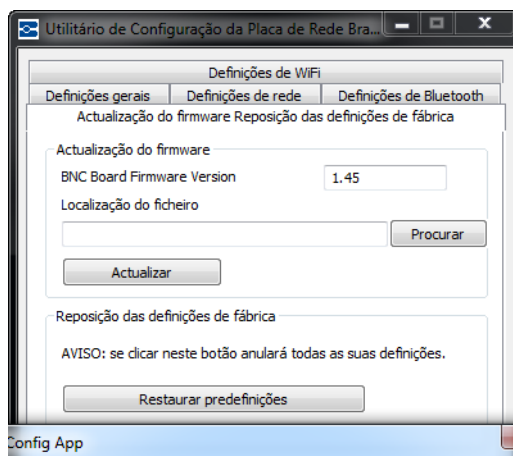
1. No separador Actualização do firmware/reposição das definições de fábrica do Utilitário de Configuração, clique no botão




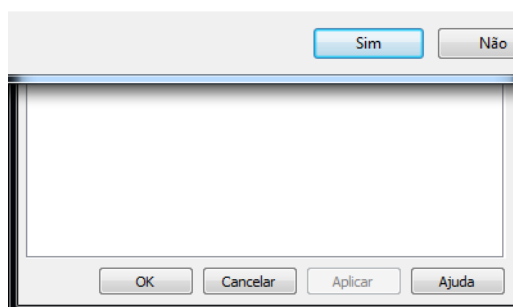
É apresentada uma mensagem de aviso a indicar que todas as definições configuradas anteriormente serão removidas.

2. Clique em Sim na mensagem de advertência se pretender continuar com o restauro predefinido.
3. Clique em OK na caixa de diálogo para aceitar as alterações e sair da caixa de diálogo.

As definições anteriores são removidas. Pode agora redefinir as configurações da rede e da placa.



 A reposição das definições de fábrica causará a perda de todos os trabalhos de impressão actuais. Pretende continuar?





Brady Worldwide Inc.

6555 West Good Hope Road

Milwaukee, WI 53223 U.S.A.

Telefono: 414-358-6600 dagli Stati Uniti

Fax: 414-438-6958

Siti Web

Stati Uniti: www.bradyid.com

Canada: www.bradycanada.com

Messico: www.bradylatinamerica.com

Asia: www.bradycorp.com

Europa: www.bradyeurope.com