

Copyright Notice

Portions of the Brady Network Card are based on the following software libraries.

BlueZ - Bluetooth protocol stack for Linux

Copyright (C) 2000-2001 Qualcomm Incorporated

Copyright (C) 2002-2003 Maxim Krasnyansky <maxk@qualcomm.com>

Copyright (C) 2002-2006 Marcel Holtmann marcel@holtmann.org

WPA Supplicant

Copyright (c) 2003-2006, Jouni Malinen <jkmaline@cc.hut.fi> and contributors All Rights Reserved.

Perl Kit, Version 5

Copyright (C) 1993, 1994, 1995, 1996, 1997, 1998, 1999, 2000, 2001, 2002, 2003, 2004, 2005, 2006 by Larry Wall and others

zlib/libpng

Copyright (C) 1995-2004 Jean-loup Gailly and Mark Adler.

Open Source Licensing Information

The Brady Network Card contains open source software. Given our obligations under these licenses, we make the following copyright notices and license terms available to you. For more information, please visit our open source licensing website at <http://www.bradyid.com/opensource>.

A. The Brady Network Card contains open source software licensed under Version 2 of the GNU General Public License.

GNU GENERAL PUBLIC LICENSE

Version 2, June 1991

Copyright (C) 1989, 1991 Free Software Foundation, Inc., 51 Franklin Street, Fifth Floor, Boston, MA 02110-1301 USA Everyone is permitted to copy and distribute verbatim copies of this license document, but changing it is not allowed.

Preamble

The licenses for most software are designed to take away your freedom to share and change it. By contrast, the GNU General Public License is intended to guarantee your freedom to share and change free software--to make sure the software is free for all its users. This General Public License applies to most of the Free Software Foundation's software and to any other program whose authors commit to using it. (Some other Free Software Foundation software is covered by the GNU Lesser General Public License instead.) You can apply it to your programs, too.

When we speak of free software, we are referring to freedom, not price. Our General Public Licenses are designed to make sure that you have the freedom to distribute copies of free software (and charge for this service if you wish), that you receive source code or can get it if you want it, that you can change the software or use pieces of it in new free programs; and that you know you can do these things.

To protect your rights, we need to make restrictions that forbid anyone to deny you these rights or to ask you to surrender the rights. These restrictions translate to certain responsibilities for you if you distribute copies of the software, or if you modify it.

For example, if you distribute copies of such a program, whether gratis or for a fee, you must give the recipients all the rights that you have. You must make sure that they, too, receive or can get the source code. And you must show them these terms so they know their rights.

We protect your rights with two steps: (1) copyright the software, and (2) offer you this license which gives you legal permission to copy, distribute and/or modify the software.

Also, for each author's protection and ours, we want to make certain that everyone understands that there is no warranty for this free software. If the software is modified by someone else and passed on, we want its recipients to know that what they have is not the original, so that any problems introduced by others will not reflect on the original authors' reputations.

Finally, any free program is threatened constantly by software patents. We wish to avoid the danger that redistributors of a free program will individually obtain patent licenses, in effect making the program proprietary. To prevent this, we have made it clear that any patent must be licensed for everyone's free use or not licensed at all.

The precise terms and conditions for copying, distribution and modification follow.

GNU GENERAL PUBLIC LICENSE
TERMS AND CONDITIONS FOR COPYING, DISTRIBUTION AND MODIFICATION

0. This License applies to any program or other work which contains a notice placed by the copyright holder saying it may be distributed under the terms of this General Public License. The "Program", below, refers to any such program or work, and a "work based on the Program" means either the Program or any derivative work under copyright law:

that is to say, a work containing the Program or a portion of it, either verbatim or with modifications and/or translated into another language. (Hereinafter, translation is included without limitation in the term "modification".) Each licensee is addressed as "you".

Activities other than copying, distribution and modification are not covered by this License; they are outside its scope. The act of running the Program is not restricted, and the output from the Program is covered only if its contents constitute a work based on the Program (independent of having been made by running the Program). Whether that is true depends on what the Program does.

1. You may copy and distribute verbatim copies of the Program's source code as you receive it, in any medium, provided that you conspicuously and appropriately publish on each copy an appropriate copyright notice and disclaimer of warranty; keep intact all the notices that refer to this License and to the absence of any warranty; and give any other recipients of the Program a copy of this License along with the Program.

You may charge a fee for the physical act of transferring a copy, and you may at your option offer warranty protection in exchange for a fee.

2. You may modify your copy or copies of the Program or any portion of it, thus forming a work based on the Program, and copy and distribute such modifications or work under the terms of Section 1 above, provided that you also meet all of these conditions:

a) You must cause the modified files to carry prominent notices stating that you changed the files and the date of any change.

b) You must cause any work that you distribute or publish, that in whole or in part contains or is derived from the Program or any part thereof, to be licensed as a whole at no charge to all third parties under the terms of this License.

c) If the modified program normally reads commands interactively when run, you must cause it, when started running for such interactive use in the most ordinary way, to print or display an announcement including an appropriate copyright notice and a notice that there is no warranty (or else, saying that you provide a warranty) and that users may redistribute the program under these conditions, and telling the user how to view a copy of this License. (Exception: if the Program itself is interactive but does not normally print such an announcement, your work based on the Program is not required to print an announcement.)

These requirements apply to the modified work as a whole. If identifiable sections of that work are not derived from the Program, and can be reasonably considered independent and separate works in themselves, then this License, and its terms, do not apply to those sections when you distribute them as separate works. But when you distribute the same sections as part of a whole which is a work based on the Program, the distribution of the whole must be on the terms of this License, whose permissions for other licensees extend to the entire whole, and thus to each and every part regardless of who wrote it.

Thus, it is not the intent of this section to claim rights or contest your rights to work written entirely by you; rather, the intent is to exercise the right to control the distribution of derivative or collective works based on the Program.

In addition, mere aggregation of another work not based on the Program with the Program (or with a work based on the Program) on a volume of a storage or distribution medium does not bring the other work under the scope of this License.

3. You may copy and distribute the Program (or a work based on it, under Section 2) in object code or executable form under the terms of Sections 1 and 2 above provided that you also do one of the following:

a) Accompany it with the complete corresponding machine-readable source code, which must be distributed under the terms of Sections 1 and 2 above on a medium customarily used for software interchange; or,

b) Accompany it with a written offer, valid for at least three years, to give any third party, for a charge no more than your cost of physically performing source distribution, a complete machine-readable copy of the corresponding source code, to be distributed under the terms of Sections 1 and 2 above on a medium customarily used for software interchange; or,

c) Accompany it with the information you received as to the offer to distribute corresponding source code. (This alternative is allowed only for noncommercial distribution and only if you received the program in object code or executable form with such an offer, in accord with Subsection b above.)

The source code for a work means the preferred form of the work for making modifications to it. For an executable work, complete source code means all the source code for all modules it contains, plus any associated interface definition files, plus the scripts used to control compilation and installation of the executable. However, as a special exception, the source code distributed need not include anything that is normally distributed (in either source or binary form) with the major components (compiler, kernel, and so on) of the operating system on which the executable runs, unless that component itself accompanies the executable.

If distribution of executable or object code is made by offering access to copy from a designated place, then offering equivalent access to copy the source code from the same place counts as distribution of the source code, even though third parties are not compelled to copy the source along with the object code.

4. You may not copy, modify, sublicense, or distribute the Program except as expressly provided under this License. Any attempt otherwise to copy, modify, sublicense or distribute the Program is void, and will automatically terminate your rights under this License. However, parties who have received copies, or rights, from you under this License will not have their licenses terminated so long as such parties remain in full compliance.

5. You are not required to accept this License, since you have not signed it. However, nothing else grants you permission to modify or distribute the Program or its derivative works. These actions are prohibited by law if you do not accept this License. Therefore, by modifying or distributing the Program (or any work based on the Program), you indicate your acceptance of this License to do so, and all its terms and conditions for copying, distributing or modifying the Program or works based on it.

6. Each time you redistribute the Program (or any work based on the Program), the recipient automatically receives a license from the original licensor to copy, distribute or modify the Program subject to these terms and conditions. You may not impose any further restrictions on the recipients' exercise of the rights granted herein. You are not responsible for enforcing compliance by third parties to this License.

7. If, as a consequence of a court judgment or allegation of patent infringement or for any other reason (not limited to patent issues), conditions are imposed on you (whether by court order, agreement or otherwise) that contradict the conditions of this License, they do not excuse you from the conditions of this License. If you cannot distribute so as to satisfy simultaneously your obligations under this License and any other pertinent obligations, then as a consequence you may not distribute the Program at all. For example, if a patent license would not permit royalty-free redistribution of the Program by all those who receive copies directly or indirectly through you, then the only way you could satisfy both it and this License would be to refrain entirely from distribution of the Program.

If any portion of this section is held invalid or unenforceable under any particular circumstance, the balance of the section is intended to apply and the section as a whole is intended to apply in other circumstances.

It is not the purpose of this section to induce you to infringe any patents or other property right claims or to contest validity of any such claims; this section has the sole purpose of protecting the integrity of the free software distribution system, which is implemented by public license practices. Many people have made generous contributions to the wide range of software distributed through that system in reliance on consistent application of that system; it is up to the author/donor to decide if he or she is willing to distribute software through any other system and a licensee cannot impose that choice.

This section is intended to make thoroughly clear what is believed to be a consequence of the rest of this License.

8. If the distribution and/or use of the Program is restricted in certain countries either by patents or by copyrighted interfaces, the original copyright holder who places the Program under this License may add an explicit geographical distribution limitation excluding those countries, so that distribution is permitted only in or among countries not thus excluded. In such case, this License incorporates the limitation as if written in the body of this License.

9. The Free Software Foundation may publish revised and/or new versions of the General Public License from time to time. Such new versions will be similar in spirit to the present version, but may differ in detail to address new problems or concerns.

Each version is given a distinguishing version number. If the Program specifies a version number of this License which applies to it and "any later version", you have the option of following the terms and conditions either of that version or of any later version published by the Free Software Foundation. If the Program does not specify a version number of this License, you may choose any version ever published by the Free Software Foundation.

10. If you wish to incorporate parts of the Program into other free programs whose distribution conditions are different, write to the author to ask for permission. For software which is copyrighted by the Free Software Foundation, write to the Free Software Foundation; we sometimes make exceptions for this. Our decision will be guided by the two goals of preserving the free status of all derivatives of our free software and of promoting the sharing and reuse of software generally.

NO WARRANTY

11. BECAUSE THE PROGRAM IS LICENSED FREE OF CHARGE, THERE IS NO WARRANTY FOR THE PROGRAM, TO THE EXTENT PERMITTED BY APPLICABLE LAW. EXCEPT WHEN OTHERWISE STATED IN WRITING THE COPYRIGHT HOLDERS AND/OR OTHER PARTIES PROVIDE THE PROGRAM "AS IS" WITHOUT WARRANTY OF ANY KIND, EITHER EXPRESSED OR IMPLIED, INCLUDING, BUT NOT LIMITED TO, THE IMPLIED WARRANTIES OF MERCHANTABILITY AND FITNESS FOR A PARTICULAR PURPOSE. THE ENTIRE RISK AS TO THE QUALITY AND PERFORMANCE OF THE PROGRAM IS WITH YOU. SHOULD THE PROGRAM PROVE DEFECTIVE, YOU ASSUME THE COST OF ALL NECESSARY SERVICING, REPAIR OR CORRECTION.

12. IN NO EVENT UNLESS REQUIRED BY APPLICABLE LAW OR AGREED TO IN WRITING WILL ANY COPYRIGHT HOLDER, OR ANY OTHER PARTY WHO MAY MODIFY AND/OR REDISTRIBUTE THE PROGRAM AS PERMITTED ABOVE, BE LIABLE TO YOU FOR DAMAGES, INCLUDING ANY GENERAL, SPECIAL, INCIDENTAL OR CONSEQUENTIAL DAMAGES ARISING OUT OF THE USE OR INABILITY TO USE THE PROGRAM (INCLUDING BUT NOT LIMITED TO LOSS OF DATA OR DATA BEING RENDERED INACCURATE OR LOSSES SUSTAINED BY YOU OR THIRD PARTIES OR A FAILURE OF THE PROGRAM TO OPERATE WITH ANY OTHER PROGRAMS), EVEN IF SUCH HOLDER OR OTHER PARTY HAS BEEN ADVISED OF THE POSSIBILITY OF SUCH DAMAGES.

END OF TERMS AND CONDITIONS

B. The Brady Network Card contains open source software licensed under Version 2.1 of the GNU Lesser General Public License.

GNU LESSER GENERAL PUBLIC LICENSE

Version 2.1, February 1999

Copyright (C) 1991, 1999 Free Software Foundation, Inc. 51 Franklin St, Fifth Floor, Boston, MA 02110-1301 USA Everyone is permitted to copy and distribute verbatim copies of this license document, but changing it is not allowed.

[This is the first released version of the Lesser GPL. It also counts as the successor of the GNU Library Public License, version 2, hence the version number 2.1.]

Preamble

The licenses for most software are designed to take away your freedom to share and change it. By contrast, the GNU General Public Licenses are intended to guarantee your freedom to share and change free software--to make sure the software is free for all its users.

This license, the Lesser General Public License, applies to some specially designated software packages--typically libraries--of the Free Software Foundation and other authors who decide to use it. You can use it too, but we suggest you first think carefully about whether this license or the ordinary General Public License is the better strategy to use in any particular case, based on the explanations below.

When we speak of free software, we are referring to freedom of use, not price. Our General Public Licenses are designed to make sure that you have the freedom to distribute copies of free software (and charge for this service if you wish); that you receive source code or can get it if you want it; that you can change the software and use pieces of it in new free programs; and that you are informed that you can do these things.

To protect your rights, we need to make restrictions that forbid distributors to deny you these rights or to ask you to surrender these rights. These restrictions translate to certain responsibilities for you if you distribute copies of the library or if you modify it.

For example, if you distribute copies of the library, whether gratis or for a fee, you must give the recipients all the rights that we gave you. You must make sure that they, too, receive or can get the source code. If you link other code with the library, you must provide complete object files to the recipients, so that they can relink them with the library after making changes to the library and recompiling it. And you must show them these terms so they know their rights.

We protect your rights with a two-step method: (1) we copyright the library, and (2) we offer you this license, which gives you legal permission to copy, distribute and/or modify the library.

To protect each distributor, we want to make it very clear that there is no warranty for the free library. Also, if the library is modified by someone else and passed on, the recipients should know that what they have is not the original version, so that the original author's reputation will not be affected by problems that might be introduced by others. Finally, software patents pose a constant threat to the existence of any free program. We wish to make sure that a company cannot effectively restrict the users of a free program by obtaining a restrictive license from a patent holder. Therefore, we insist that any patent license obtained for a version of the library must be consistent with the full freedom of use specified in this license.

Most GNU software, including some libraries, is covered by the ordinary GNU General Public License. This license, the GNU Lesser General Public License, applies to certain designated libraries, and is quite different from the ordinary General Public License. We use this license for certain libraries in order to permit linking those libraries into non-free programs.

When a program is linked with a library, whether statically or using a shared library, the combination of the two is legally speaking a combined work, a derivative of the original library. The ordinary General Public License therefore permits such linking only if the entire combination fits its criteria of freedom. The Lesser General Public License permits more lax criteria for linking other code with the library.

We call this license the "Lesser" General Public License because it does Less to protect the user's freedom than the ordinary General Public License. It also provides other free software developers Less of an advantage over competing non-free programs. These disadvantages are the reason we use the ordinary General Public License for many libraries. However, the Lesser license provides advantages in certain special circumstances.

For example, on rare occasions, there may be a special need to encourage the widest possible use of a certain library, so that it becomes a de-facto standard. To achieve this, non-free programs must be allowed to use the library. A more frequent case is that a free library does the same job as widely used non-free libraries. In this case, there is little to gain by limiting the free library to free software only, so we use the Lesser General Public License.

In other cases, permission to use a particular library in non-free programs enables a greater number of people to use a large body of free software. For example, permission to use the GNU C Library in non-free programs enables many more people to use the whole GNU operating system, as well as its variant, the GNU/Linux operating system.

Although the Lesser General Public License is Less protective of the users' freedom, it does ensure that the user of a program that is linked with the Library has the freedom and the wherewithal to run that program using a modified version of the Library.

The precise terms and conditions for copying, distribution and modification follow. Pay close attention to the difference between a "work based on the library" and a "work that uses the library". The former contains code derived from the library, whereas the latter must be combined with the library in order to run.

GNU LESSER GENERAL PUBLIC LICENSE TERMS AND CONDITIONS FOR COPYING, DISTRIBUTION AND MODIFICATION

0. This License Agreement applies to any software library or other program which contains a notice placed by the copyright holder or other authorized party saying it may be distributed under the terms of this Lesser General Public License (also called "this License"). Each licensee is addressed as "you".

A "library" means a collection of software functions and/or data prepared so as to be conveniently linked with application programs (which use some of those functions and data) to form executables.

The "Library", below, refers to any such software library or work which has been distributed under these terms. A "work based on the Library" means either the Library or any derivative work under copyright law: that is to say, a work containing the Library or a portion of it, either verbatim or with modifications and/or translated straightforwardly into another language. (Hereinafter, translation is included without limitation in the term "modification".)

"Source code" for a work means the preferred form of the work for making modifications to it. For a library, complete source code means all the source code for all modules it contains, plus any associated interface definition files, plus the scripts used to control compilation and installation of the library.

Activities other than copying, distribution and modification are not covered by this License; they are outside its scope. The act of running a program using the Library is not restricted, and output from such a program is covered only if its contents constitute a work based on the Library (independent of the use of the Library in a tool for writing it). Whether that is true depends on what the Library does and what the program that uses the Library does.

1. You may copy and distribute verbatim copies of the Library's complete source code as you receive it, in any medium, provided that you conspicuously and appropriately publish on each copy an appropriate copyright notice and disclaimer of warranty; keep intact all the notices that refer to this License and to the absence of any warranty; and distribute a copy of this License along with the Library.

You may charge a fee for the physical act of transferring a copy, and you may at your option offer warranty protection in exchange for a fee.

2. You may modify your copy or copies of the Library or any portion of it, thus forming a work based on the Library, and copy and distribute such modifications or work under the terms of Section 1 above, provided that you also meet all of these conditions:

- a) The modified work must itself be a software library.
- b) You must cause the files modified to carry prominent notices stating that you changed the files and the date of any change.
- c) You must cause the whole of the work to be licensed at no charge to all third parties under the terms of this License.

d) If a facility in the modified Library refers to a function or a table of data to be supplied by an application program that uses the facility, other than as an argument passed when the facility is invoked, then you must make a good faith effort to ensure that, in the event an application does not supply such function or table, the facility still operates, and performs whatever part of its purpose remains meaningful.

(For example, a function in a library to compute square roots has a purpose that is entirely well-defined independent of the application. Therefore, Subsection 2d requires that any application-supplied function or table used by this function must be optional: if the application does not supply it, the square root function must still compute square roots.)

These requirements apply to the modified work as a whole. If identifiable sections of that work are not derived from the Library, and can be reasonably considered independent and separate works in themselves, then this License, and its terms, do not apply to those sections when you distribute them as separate works. But when you distribute the same sections as part of a whole which is a work based on the Library, the distribution of the whole must be on the terms of this License, whose permissions for other licensees extend to the entire whole, and thus to each and every part regardless of who wrote it.

Thus, it is not the intent of this section to claim rights or contest your rights to work written entirely by you; rather, the intent is to exercise the right to control the distribution of derivative or collective works based on the Library.

In addition, mere aggregation of another work not based on the Library with the Library (or with a work based on the Library) on a volume of a storage or distribution medium does not bring the other work under the scope of this License.

3. You may opt to apply the terms of the ordinary GNU General Public License instead of this License to a given copy of the Library. To do this, you must alter all the notices that refer to this License, so that they refer to the ordinary GNU General Public License, version 2, instead of to this License. (If a newer version than version 2 of the ordinary GNU General Public License has appeared, then you can specify that version instead if you wish.) Do not make any other change in these notices.

Once this change is made in a given copy, it is irreversible for that copy, so the ordinary GNU General Public License applies to all subsequent copies and derivative works made from that copy.

This option is useful when you wish to copy part of the code of the Library into a program that is not a library.

4. You may copy and distribute the Library (or a portion or derivative of it, under Section 2) in object code or executable form under the terms of Sections 1 and 2 above provided that you accompany it with the complete corresponding machine-readable source code, which must be distributed under the terms of Sections 1 and 2 above on a medium customarily used for software interchange.

If distribution of object code is made by offering access to copy from a designated place, then offering equivalent access to copy the source code from the same place satisfies the requirement to distribute the source code, even though third parties are not compelled to copy the source along with the object code.

5. A program that contains no derivative of any portion of the Library, but is designed to work with the Library by being compiled or linked with it, is called a "work that uses the Library". Such a work, in isolation, is not a derivative work of the Library, and therefore falls outside the scope of this License.

However, linking a "work that uses the Library" with the Library creates an executable that is a derivative of the Library (because it contains portions of the Library), rather than a "work that uses the library". The executable is therefore covered by this License. Section 6 states terms for distribution of such executables.

When a "work that uses the Library" uses material from a header file that is part of the Library, the object code for the work may be a derivative work of the Library even though the source code is not. Whether this is true is especially significant if the work can be linked without the Library, or if the work is itself a library. The threshold for this to be true is not precisely defined by law.

If such an object file uses only numerical parameters, data structure layouts and accessors, and small macros and small inline functions (ten lines or less in length), then the use of the object file is unrestricted, regardless of whether it is legally a derivative work. (Executables containing this object code plus portions of the Library will still fall under Section 6.)

Otherwise, if the work is a derivative of the Library, you may distribute the object code for the work under the terms of Section 6. Any executables containing that work also fall under Section 6, whether or not they are linked directly with the Library itself.

6. As an exception to the Sections above, you may also combine or link a "work that uses the Library" with the Library to produce a work containing portions of the Library, and distribute that work under terms of your choice, provided that the terms permit modification of the work for the customer's own use and reverse engineering for debugging such modifications.

You must give prominent notice with each copy of the work that the Library is used in it and that the Library and its use are covered by this License. You must supply a copy of this License. If the work during execution displays copyright notices, you must include the copyright notice for the Library among them, as well as a reference directing the user to the copy of this License. Also, you must do one of these things:

- a) Accompany the work with the complete corresponding machine-readable source code for the Library including whatever changes were used in the work (which must be distributed under Sections 1 and 2 above); and, if the work is an executable linked with the Library, with the complete machine-readable "work that uses the Library", as object code and/or source code, so that the user can modify the Library and then relink to produce a modified executable containing the modified Library. (It is understood that the user who changes the contents of definitions files in the Library will not necessarily be able to recompile the application to use the modified definitions.)
- b) Use a suitable shared library mechanism for linking with the Library. A suitable mechanism is one that (1) uses at run time a copy of the library already present on the user's computer system, rather than copying library functions into the executable, and (2) will operate properly with a modified version of the library, if the user installs one, as long as the modified version is interface-compatible with the version that the work was made with.
- c) Accompany the work with a written offer, valid for at least three years, to give the same user the materials specified in Subsection 6a, above, for a charge no more than the cost of performing this distribution.
- d) If distribution of the work is made by offering access to copy from a designated place, offer equivalent access to copy the above specified materials from the same place.
- e) Verify that the user has already received a copy of these materials or that you have already sent this user a copy.

For an executable, the required form of the "work that uses the Library" must include any data and utility programs needed for reproducing the executable from it. However, as a special exception, the materials to be distributed need not include anything that is normally distributed (in either source or binary form) with the major components (compiler, kernel, and so on) of the operating system on which the executable runs, unless that component itself accompanies the executable.

It may happen that this requirement contradicts the license restrictions of other proprietary libraries that do not normally accompany the operating system. Such a contradiction means you cannot use both them and the Library together in an executable that you distribute.

7. You may place library facilities that are a work based on the Library side-by-side in a single library together with other library facilities not covered by this License, and distribute such a combined library, provided that the separate distribution of the work based on the Library and of the other library facilities is otherwise permitted, and provided that you do these two things:

a) Accompany the combined library with a copy of the same work based on the Library, uncombined with any other library facilities. This must be distributed under the terms of the Sections above.

b) Give prominent notice with the combined library of the fact that part of it is a work based on the Library, and explaining where to find the accompanying uncombined form of the same work.

8. You may not copy, modify, sublicense, link with, or distribute the Library except as expressly provided under this License. Any attempt otherwise to copy, modify, sublicense, link with, or distribute the Library is void, and will automatically terminate your rights under this License. However, parties who have received copies, or rights, from you under this License will not have their licenses terminated so long as such parties remain in full compliance.

9. You are not required to accept this License, since you have not signed it. However, nothing else grants you permission to modify or distribute the Library or its derivative works. These actions are prohibited by law if you do not accept this License. Therefore, by modifying or distributing the Library (or any work based on the Library), you indicate your acceptance of this License to do so, and all its terms and conditions for copying, distributing or modifying the Library or works based on it.

10. Each time you redistribute the Library (or any work based on the Library), the recipient automatically receives a license from the original licensor to copy, distribute, link with or modify the Library subject to these terms and conditions. You may not impose any further restrictions on the recipients' exercise of the rights granted herein. You are not responsible for enforcing compliance by third parties with this License.

11. If, as a consequence of a court judgment or allegation of patent infringement or for any other reason (not limited to patent issues), conditions are imposed on you (whether by court order, agreement or otherwise) that contradict the conditions of this License, they do not excuse you from the conditions of this License. If you cannot distribute so as to satisfy simultaneously your obligations under this License and any other pertinent obligations, then as a consequence you may not distribute the Library at all. For example, if a patent license would not permit royalty-free redistribution of the Library by all those who receive copies directly or indirectly through you, then the only way you could satisfy both it and this License would be to refrain entirely from distribution of the Library.

If any portion of this section is held invalid or unenforceable under any particular circumstance, the balance of the section is intended to apply, and the section as a whole is intended to apply in other circumstances.

It is not the purpose of this section to induce you to infringe any patents or other property right claims or to contest validity of any such claims; this section has the sole purpose of protecting the integrity of the free software distribution system which is implemented by public license practices. Many people have made generous contributions to the wide range of software distributed through that system in reliance on consistent application of that system; it is up to the author/donor to decide if he or she is willing to distribute software through any other system and a licensee cannot impose that choice.

This section is intended to make thoroughly clear what is believed to be a consequence of the rest of this License.

12. If the distribution and/or use of the Library is restricted in certain countries either by patents or by copyrighted interfaces, the original copyright holder who places the Library under this License may add an explicit geographical distribution limitation excluding those countries, so that distribution is permitted only in or among countries not thus excluded. In such case, this License incorporates the limitation as if written in the body of this License.

13. The Free Software Foundation may publish revised and/or new versions of the Lesser General Public License from time to time. Such new versions will be similar in spirit to the present version, but may differ in detail to address new problems or concerns.

Each version is given a distinguishing version number. If the Library specifies a version number of this License which applies to it and "any later version", you have the option of following the terms and conditions either of that version or of any later version published by the Free Software Foundation. If the Library does not specify a license version number, you may choose any version ever published by the Free Software Foundation.

14. If you wish to incorporate parts of the Library into other free programs whose distribution conditions are incompatible with these, write to the author to ask for permission. For software which is copyrighted by the Free Software Foundation, write to the Free Software Foundation; we sometimes make exceptions for this. Our decision will be guided by the two goals of preserving the free status of all derivatives of our free software and of promoting the sharing and reuse of software generally.

NO WARRANTY

15. BECAUSE THE LIBRARY IS LICENSED FREE OF CHARGE, THERE IS NO WARRANTY FOR THE LIBRARY, TO THE EXTENT PERMITTED BY APPLICABLE LAW. EXCEPT WHEN OTHERWISE STATED IN WRITING THE COPYRIGHT HOLDERS AND/OR OTHER PARTIES PROVIDE THE LIBRARY "AS IS" WITHOUT WARRANTY OF ANY KIND, EITHER EXPRESSED OR IMPLIED, INCLUDING, BUT NOT LIMITED TO, THE IMPLIED WARRANTIES OF MERCHANTABILITY AND FITNESS FOR A PARTICULAR PURPOSE. THE ENTIRE RISK AS TO THE QUALITY AND PERFORMANCE OF THE LIBRARY IS WITH YOU. SHOULD THE LIBRARY PROVE DEFECTIVE, YOU ASSUME THE COST OF ALL NECESSARY SERVICING, REPAIR OR CORRECTION.

16. IN NO EVENT UNLESS REQUIRED BY APPLICABLE LAW OR AGREED TO IN WRITING WILL ANY COPYRIGHT HOLDER, OR ANY OTHER PARTY WHO MAY MODIFY AND/OR REDISTRIBUTE THE LIBRARY AS PERMITTED ABOVE, BE LIABLE TO YOU FOR DAMAGES, INCLUDING ANY GENERAL, SPECIAL, INCIDENTAL OR CONSEQUENTIAL DAMAGES ARISING OUT OF THE USE OR INABILITY TO USE THE LIBRARY (INCLUDING BUT NOT LIMITED TO LOSS OF DATA OR DATA BEING RENDERED INACCURATE OR LOSSES SUSTAINED BY YOU OR THIRD PARTIES OR A FAILURE OF THE LIBRARY TO OPERATE WITH ANY OTHER SOFTWARE), EVEN IF SUCH HOLDER OR OTHER PARTY HAS BEEN ADVISED OF THE POSSIBILITY OF SUCH DAMAGES.

C. The Brady Network Card contains open source software licensed under the OpenSSL License.

Copyright (c) 1998-2007 The OpenSSL Project. All rights reserved.

Redistribution and use in source and binary forms, with or without modification, are permitted provided that the following conditions are met:

1. Redistributions of source code must retain the above copyright notice, this list of conditions and the following disclaimer. 2. Redistributions in binary form must reproduce the above copyright notice, this list of conditions and the following disclaimer in the documentation and/or other materials provided with the distribution. 3. All advertising materials mentioning features or use of this software must display the following acknowledgment: "This product includes software developed by the OpenSSL Project for use in the OpenSSL Toolkit. (<http://www.openssl.org/>)" 4. The names "OpenSSL Toolkit" and "OpenSSL Project" must not be used to endorse or promote products derived from this software without prior written permission. For written permission, please contact openssl-core@openssl.org. 5. Products derived from this software may not be called "OpenSSL" nor may "OpenSSL" appear in their names without prior written permission of the OpenSSL Project. 6. Redistributions of any form whatsoever must retain the following acknowledgment: "This product includes software developed by the OpenSSL Project for use in the OpenSSL Toolkit (<http://www.openssl.org/>)"

THIS SOFTWARE IS PROVIDED BY THE OpenSSL PROJECT ``AS IS" AND ANY EXPRESSED OR IMPLIED WARRANTIES, INCLUDING, BUT NOT LIMITED TO, THE IMPLIED WARRANTIES OF MERCHANTABILITY AND FITNESS FOR A PARTICULAR PURPOSE ARE DISCLAIMED. IN NO EVENT SHALL THE OpenSSL PROJECT OR ITS CONTRIBUTORS BE LIABLE FOR ANY DIRECT, INDIRECT, INCIDENTAL, SPECIAL, EXEMPLARY, OR CONSEQUENTIAL DAMAGES (INCLUDING, BUT NOT LIMITED TO, PROCUREMENT OF SUBSTITUTE GOODS OR SERVICES; LOSS OF USE, DATA, OR PROFITS; OR BUSINESS INTERRUPTION HOWEVER CAUSED AND ON ANY THEORY OF LIABILITY, WHETHER IN CONTRACT, STRICT LIABILITY, OR TORT (INCLUDING NEGLIGENCE OR OTHERWISE) ARISING IN ANY WAY OUT OF THE USE OF THIS SOFTWARE, EVEN IF ADVISED OF THE POSSIBILITY OF SUCH DAMAGE.

D. This product includes cryptographic software written by Eric Young (eay@cryptsoft.com). This product includes software written by Tim Hudson (tjh@cryptsoft.com).

Copyright (C) 1995-1998 Eric Young (eay@cryptsoft.com)

All rights reserved. This package is an SSL implementation written by Eric Young (eay@cryptsoft.com).

The implementation was written so as to conform with Netscape's SSL. This library is free for commercial and non-commercial use as long as the following conditions are adhered to. The following conditions apply to all code found in this distribution, be it the RC4, RSA, lhash, DES, etc., code; not just the SSL code. The SSL documentation included with this distribution is covered by the same copyright terms except that the holder is Tim Hudson (tjh@cryptsoft.com). Copyright remains Eric Young's, and as such any Copyright notices in the code are not to be removed. If this package is used in a product, Eric Young should be given attribution as the author of the parts of the library used. This can be in the form of a textual message at program startup or in documentation (online or textual) provided with the package.

Redistribution and use in source and binary forms, with or without modification, are permitted provided that the following conditions are met:

1. Redistributions of source code must retain the copyright notice, this list of conditions and the following disclaimer.

2. Redistributions in binary form must reproduce the above copyright notice, this list of conditions and the following disclaimer in the documentation and/or other materials provided with the distribution. 3. All advertising materials mentioning features or use of this software must display the following acknowledgement:

"This product includes cryptographic software written by Eric Young (eay@cryptsoft.com)" The word 'cryptographic' can be left out if the routines from the library being used are not cryptographic related :-). 4. If you include any Windows specific code (or a derivative thereof) from the apps directory (application code) you must include an acknowledgement: "This product includes software written by Tim Hudson (tjh@cryptsoft.com)"

THIS SOFTWARE IS PROVIDED BY ERIC YOUNG ``AS IS" AND ANY EXPRESS OR IMPLIED WARRANTIES, INCLUDING, BUT NOT LIMITED TO, THE IMPLIED WARRANTIES OF MERCHANTABILITY AND FITNESS FOR A PARTICULAR PURPOSE ARE DISCLAIMED. IN NO EVENT SHALL THE AUTHOR OR CONTRIBUTORS BE LIABLE FOR ANY DIRECT, INDIRECT, INCIDENTAL, SPECIAL, EXEMPLARY, OR CONSEQUENTIAL DAMAGES (INCLUDING, BUT NOT LIMITED TO, PROCUREMENT OF SUBSTITUTE GOODS OR SERVICES; LOSS OF USE, DATA, OR PROFITS; OR BUSINESS INTERRUPTION) HOWEVER CAUSED AND ON ANY THEORY OF LIABILITY, WHETHER IN CONTRACT, STRICT LIABILITY, OR TORT (INCLUDING NEGLIGENCE OR OTHERWISE) ARISING IN ANY WAY OUT OF THE USE OF THIS SOFTWARE, EVEN IF ADVISED OF THE POSSIBILITY OF SUCH DAMAGE.

The license and distribution terms for any publically available version or derivative of this code cannot be changed. i.e. this code cannot simply be copied and put under another distribution license [including the GNU Public License.]

E. The Brady Network Card contains open source software licensed under the dropbear license.

Dropbear contains a number of components from different sources, hence there are a few licenses and authors involved. All licenses are fairly non-restrictive. The majority of code is written by Matt Johnston, under the license below. Portions of the client-mode work are (c) 2004 Mihnea Stoenescu, under the same license:

Copyright (c) 2002-2008 Matt Johnston. Portions copyright (c) 2004 Mihnea Stoenescu. All rights reserved.

Permission is hereby granted, free of charge, to any person obtaining a copy of this software and associated documentation files (the "Software"), to deal in the Software without restriction, including without limitation the rights to use, copy, modify, merge, publish, distribute, sublicense, and/or sell copies of the Software, and to permit persons to whom the Software is furnished to do so, subject to the following conditions:

The above copyright notice and this permission notice shall be included in all copies or substantial portions of the Software.

THE SOFTWARE IS PROVIDED "AS IS", WITHOUT WARRANTY OF ANY KIND, EXPRESS OR IMPLIED, INCLUDING BUT NOT LIMITED TO THE WARRANTIES OF MERCHANTABILITY, FITNESS FOR A PARTICULAR PURPOSE AND NONINFRINGEMENT. IN NO EVENT SHALL THE AUTHORS OR COPYRIGHT HOLDERS BE LIABLE FOR ANY CLAIM, DAMAGES OR OTHER LIABILITY, WHETHER IN AN ACTION OF CONTRACT, TORT OR OTHERWISE, ARISING FROM, OUT OF OR IN CONNECTION WITH THE SOFTWARE OR THE USE OR OTHER DEALINGS IN THE SOFTWARE.

LibTomCrypt and LibTomMath are written by Tom St Denis, and are Public Domain.

PuTTY is copyright 1997-2003 Simon Tatham.

Portions copyright Robert de Bath, Joris van Rantwijk, Delian Delchev, Andreas Schultz, Jeroen Massar, Wez Furlong, Nicolas Barry, Justin Bradford, and CORE SDI S.A.

Permission is hereby granted, free of charge, to any person obtaining a copy of this software and associated documentation files (the "Software"), to deal in the Software without restriction, including without limitation the rights to use, copy, modify, merge, publish, distribute, sublicense, and/or sell copies of the Software, and to permit persons to whom the Software is furnished to do so, subject to the following conditions:

The above copyright notice and this permission notice shall be included in all copies or substantial portions of the Software.

THE SOFTWARE IS PROVIDED "AS IS", WITHOUT WARRANTY OF ANY KIND, EXPRESS OR IMPLIED, INCLUDING BUT NOT LIMITED TO THE WARRANTIES OF MERCHANTABILITY, FITNESS FOR A PARTICULAR PURPOSE AND NONINFRINGEMENT. IN NO EVENT SHALL THE COPYRIGHT HOLDERS BE LIABLE FOR ANY CLAIM, DAMAGES OR OTHER LIABILITY, WHETHER IN AN ACTION OF CONTRACT, TORT OR OTHERWISE, ARISING FROM, OUT OF OR IN CONNECTION WITH THE SOFTWARE OR THE USE OR OTHER DEALINGS IN THE SOFTWARE.

F. The Brady Network Card contains open source software licensed under the Apache License Version 2.0.

The majority of the source code in the mDNSResponder project is licensed under the terms of the Apache License, Version 2.0, available from: <<http://www.apache.org/licenses/LICENSE-2.0>>

Apache License

Version 2.0, January 2004

<http://www.apache.org/licenses/>

TERMS AND CONDITIONS FOR USE, REPRODUCTION, AND DISTRIBUTION

1. Definitions.

"License" shall mean the terms and conditions for use, reproduction, and distribution as defined by Sections 1 through 9 of this document.

"Licensor" shall mean the copyright owner or entity authorized by the copyright owner that is granting the License.

"Legal Entity" shall mean the union of the acting entity and all other entities that control, are controlled by, or are under common control with that entity. For the purposes of this definition, "control" means (i) the power, direct or indirect, to cause the direction or management of such entity, whether by contract or otherwise, or (ii) ownership of fifty percent (50%) or more of the outstanding shares, or (iii) beneficial ownership of such entity.

"You" (or "Your") shall mean an individual or Legal Entity exercising permissions granted by this License.

"Source" form shall mean the preferred form for making modifications, including but not limited to software source code, documentation source, and configuration files.

"Object" form shall mean any form resulting from mechanical transformation or translation of a Source form, including but not limited to compiled object code, generated documentation, and conversions to other media types.

"Work" shall mean the work of authorship, whether in Source or Object form, made available under the License, as indicated by a copyright notice that is included in or attached to the work (an example is provided in the Appendix below).

"Derivative Works" shall mean any work, whether in Source or Object form, that is based on (or derived from) the Work and for which the editorial revisions, annotations, elaborations, or other modifications represent, as a whole, an original work of authorship. For the purposes of this License, Derivative Works shall not include works that remain separable from, or merely link (or bind by name) to the interfaces of, the Work and Derivative Works thereof.

"Contribution" shall mean any work of authorship, including the original version of the Work and any modifications or additions to that Work or Derivative Works thereof, that is intentionally submitted to Licensor for inclusion in the Work by the copyright owner or by an individual or Legal Entity authorized to submit on behalf of the copyright owner. For the purposes of this definition, "submitted" means any form of electronic, verbal, or written communication sent to the Licensor or its representatives, including but not limited to communication on electronic mailing lists, source code control systems, and issue tracking systems that are managed by, or on behalf of, the Licensor for the purpose of discussing and improving the Work, but excluding communication that is conspicuously marked or otherwise designated in writing by the copyright owner as "Not a Contribution."

"Contributor" shall mean Licensor and any individual or Legal Entity on behalf of whom a Contribution has been received by Licensor and subsequently incorporated within the Work.

2. Grant of Copyright License. Subject to the terms and conditions of this License, each Contributor hereby grants to You a perpetual, worldwide, non-exclusive, no-charge, royalty-free, irrevocable copyright license to reproduce, prepare Derivative Works of, publicly display, publicly perform, sublicense, and distribute the Work and such Derivative Works in Source or Object form.

3. Grant of Patent License. Subject to the terms and conditions of this License, each Contributor hereby grants to You a perpetual, worldwide, non-exclusive, no-charge, royalty-free, irrevocable (except as stated in this section) patent license to make, have made, use, offer to sell, sell, import, and otherwise transfer the Work, where such license applies only to those patent claims licensable by such Contributor that are necessarily infringed by their Contribution(s) alone or by combination of their Contribution(s) with the Work to which such Contribution(s) was submitted. If You institute patent litigation against any entity (including a cross-claim or counterclaim in a lawsuit) alleging that the Work or a Contribution incorporated within the Work constitutes direct or contributory patent infringement, then any patent licenses granted to You under this License for that Work shall terminate as of the date such litigation is filed.

4. Redistribution. You may reproduce and distribute copies of the Work or Derivative Works thereof in any medium, with or without modifications, and in Source or Object form, provided that You meet the following conditions:

You must give any other recipients of the Work or Derivative Works a copy of this License; and

You must cause any modified files to carry prominent notices stating that You changed the files; and

You must retain, in the Source form of any Derivative Works that You distribute, all copyright, patent, trademark, and attribution notices from the Source form of the Work, excluding those notices that do not pertain to any part of the Derivative Works; and

If the Work includes a "NOTICE" text file as part of its distribution, then any Derivative Works that You distribute must include a readable copy of the attribution notices contained within such NOTICE file, excluding those notices that do not pertain to any part of the Derivative Works, in at least one of the following places: within a NOTICE text file distributed as part of the Derivative Works; within the Source form or documentation, if provided along with the Derivative Works; or, within a display generated by the Derivative Works, if and wherever such third-party notices normally appear. The contents of the NOTICE file are for informational purposes only and do not modify the License. You may add Your own attribution notices within Derivative Works that You distribute, alongside or as an addendum to the NOTICE text from the Work, provided that such additional attribution notices cannot be construed as modifying the License. You may add Your own copyright statement to Your modifications and may provide additional or different license terms and conditions for use, reproduction, or distribution of Your modifications, or for any such Derivative Works as a whole, provided Your use, reproduction, and distribution of the Work otherwise complies with the conditions stated in this License.

5. Submission of Contributions. Unless You explicitly state otherwise, any Contribution intentionally submitted for inclusion in the Work by You to the Licensor shall be under the terms and conditions of this License, without any additional terms or conditions. Notwithstanding the above, nothing herein shall supersede or modify the terms of any separate license agreement you may have executed with Licensor regarding such Contributions.

6. Trademarks. This License does not grant permission to use the trade names, trademarks, service marks, or product names of the Licensor, except as required for reasonable and customary use in describing the origin of the Work and reproducing the content of the NOTICE file.

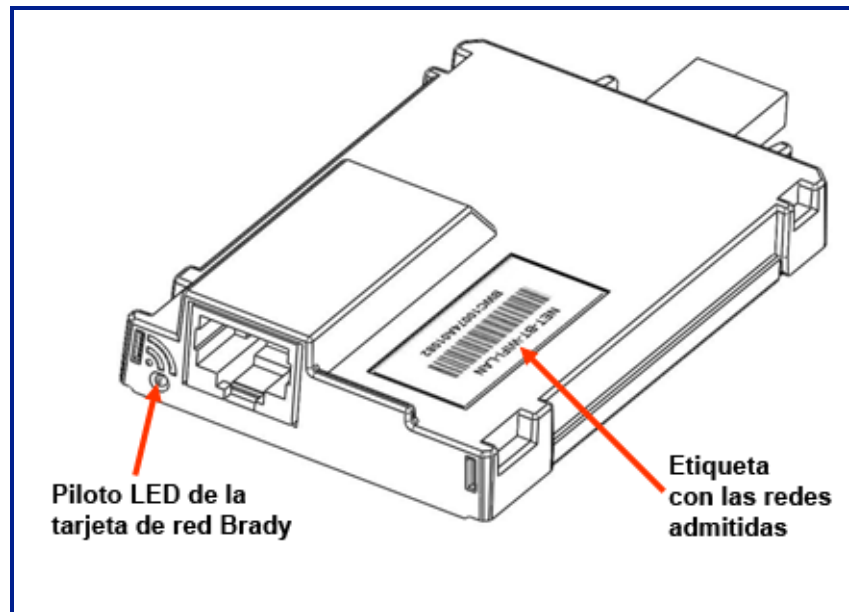
7. Disclaimer of Warranty. Unless required by applicable law or agreed to in writing, Licensor provides the Work (and each Contributor provides its Contributions) on an "AS IS" BASIS, WITHOUT WARRANTIES OR CONDITIONS OF ANY KIND, either express or implied, including, without limitation, any warranties or conditions of TITLE, NON-INFRINGEMENT, MERCHANTABILITY, or FITNESS FOR A PARTICULAR PURPOSE. You are solely responsible for determining the appropriateness of using or redistributing the Work and assume any risks associated with Your exercise of permissions under this License.

8. Limitation of Liability. In no event and under no legal theory, whether in tort (including negligence), contract, or otherwise, unless required by applicable law (such as deliberate and grossly negligent acts) or agreed to in writing, shall any Contributor be liable to You for damages, including any direct, indirect, special, incidental, or consequential damages of any character arising as a result of this License or out of the use or inability to use the Work (including but not limited to damages for loss of goodwill, work stoppage, computer failure or malfunction, or any and all other commercial damages or losses), even if such Contributor has been advised of the possibility of such damages.

9. Accepting Warranty or Additional Liability. While redistributing the Work or Derivative Works thereof, You may choose to offer, and charge a fee for, acceptance of support, warranty, indemnity, or other liability obligations and/or rights consistent with this License. However, in accepting such obligations, You may act only on Your own behalf and on Your sole responsibility, not on behalf of any other Contributor, and only if You agree to indemnify, defend, and hold each Contributor harmless for any liability incurred by, or claims asserted against, such Contributor by reason of your accepting any such warranty or additional liability.

To accommodate license compatibility with the widest possible range of client code licenses, the shared library code, which is linked at runtime into the same address space as the client using it, is licensed under the terms of the "Three-Clause BSD License". The Linux Name Service Switch code, contributed by National ICT Australia Ltd (NICTA) is licensed under the terms of the NICTA Public Software Licence (which is substantially similar to the "Three-Clause BSD License", with some additional language pertaining to Australian law).

Tarjeta de red Brady



Piloto LED de la tarjeta de red Brady

Los colores del piloto LED en la tarjeta de red Brady tienen el siguiente significado:

| Color | Estado |
|---------------------|--|
| Verde fijo | La tarjeta funciona correctamente. El estado es correcto. |
| Naranja parpadeante | El firmware está dañado y es necesario actualizarlo. Use la Utilidad de configuración de la tarjeta de red Brady para actualizar el firmware. (Consulte la página 79 para obtener información acerca de la descarga del nuevo firmware). |
| Verde parpadeante | La actualización del firmware está en curso. |
| Rojo fijo | Error en la tarjeta. No hay comunicación entre la tarjeta de red Brady y la impresora. Póngase en contacto con el administrador del sistema. |
| Rojo parpadeante | Se ha detectado un error en el funcionamiento actual de la tarjeta de red Brady. Compruebe el funcionamiento actual. |

Redes admitidas

El nombre de la etiqueta con el código de barras de la tarjeta de red indica las redes admitidas por esta tarjeta concreta.

| Nombre | Redes admitidas |
|-----------------|----------------------------|
| NET-BT-WIFI-LAN | Bluetooth, WiFi y Ethernet |
| NET-WIFI | SOLO WiFi y Bluetooth |
| NET-BT | SOLO Bluetooth |
| NET-LAN | SOLO Ethernet |

Instalación de la tarjeta de red Brady

Si su impresora Brady está equipada con una tarjeta de red Brady (WiFi o Ethernet), puede configurarla para que funcione como una impresora local (físicamente conectada a su PC mediante un cable USB) y como una impresora en red (compartida) mediante Ethernet o WiFi. Para establecer la impresora como una impresora de red, es necesario configurar la tarjeta de red Brady para reconocer las redes y trabajar con ellas. El CD de controladores de impresoras Brady, que acompaña a la impresora, contiene los asistentes para la instalación, no sólo de los controladores de la impresora, sino también para configurar la tarjeta de red Brady. Los controladores de la impresora y los controladores en la tarjeta de red Brady también pueden descargarse desde el sitio web de Brady en www.bradyid.com.

El asistente para la instalación y la configuración de la tarjeta de red identifica seis escenarios de instalación diferentes. Son las siguientes:

- Primera instalación para imprimir mediante WiFi
- Primera instalación para imprimir mediante Ethernet
- Impresión mediante Bluetooth para teléfonos móviles
- Instalación para PCs adicionales
- Instalación sólo del controlador de USB
- Instalación por primera vez para impresión Ad hoc

Primera instalación para imprimir mediante WiFi

Use este proceso de instalación:

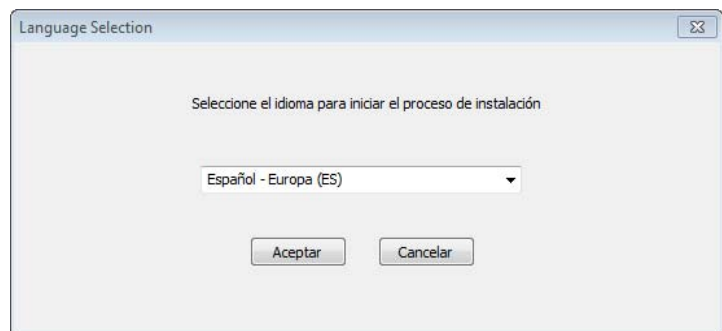
- ☒ **Si acaba de adquirir la impresora y la está configurando por primera vez.**
- ☒ **Si desea enviar trabajos de impresión a la impresora desde un PC mediante una red WiFi.**

Para configurar la tarjeta de red Brady para WiFi e instalar el controlador de su impresora Brady, siga estos pasos.

1. Asegúrese de que la impresora y el PC **NO** están conectados con un cable USB.
2. Inserte el CD de controladores de la impresora Brady en la unidad de CD del ordenador.

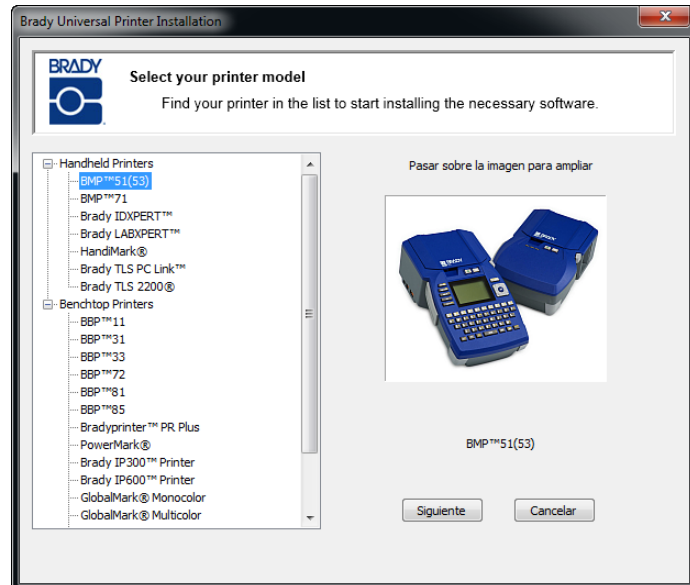
El asistente para la instalación se inicia automáticamente.

3. Encienda la impresora.
4. Seleccione su idioma de la lista desplegable y, a continuación, haga clic en Aceptar.

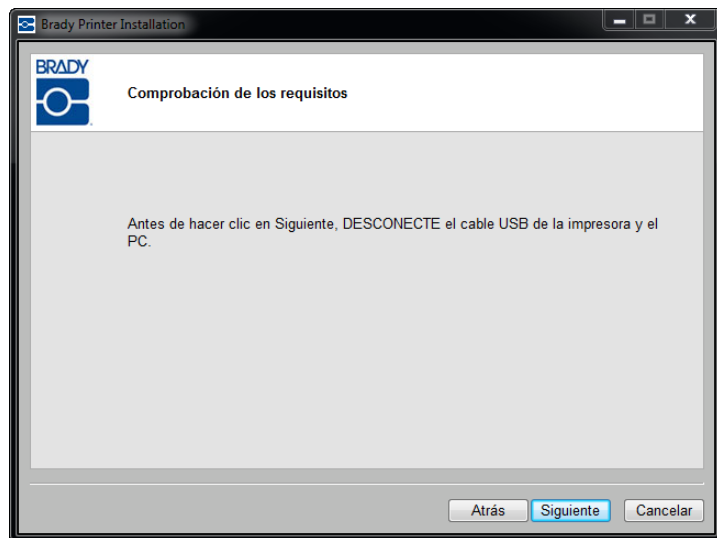


5. Haga clic en el modelo de impresora que está instalando y, a continuación, haga clic en Siguiente.

El Instalador de Windows instalará la aplicación de configuración de la red de configuración Brady.



6. Si la impresora y el PC aún están conectados con un cable USB, **DESCONÉCTELO** ahora.

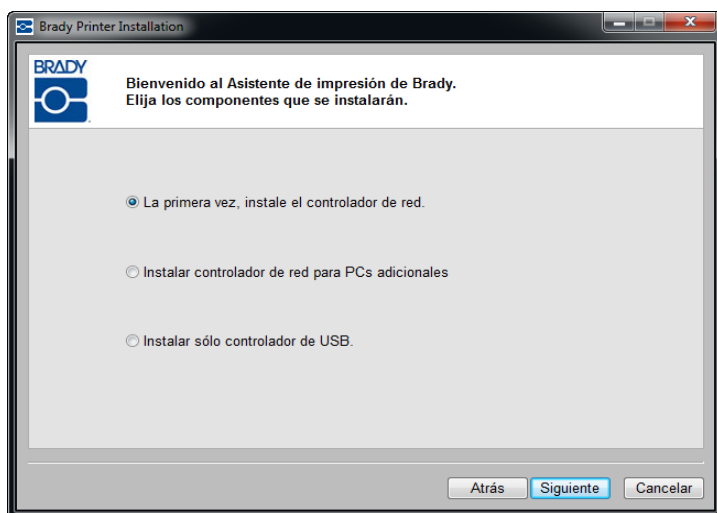


7. En la ventana emergente "instalar software del dispositivo", haga clic en **Instalar** para instalar los controladores de la impresora.

6 | Instalación de la tarjeta de red Brady

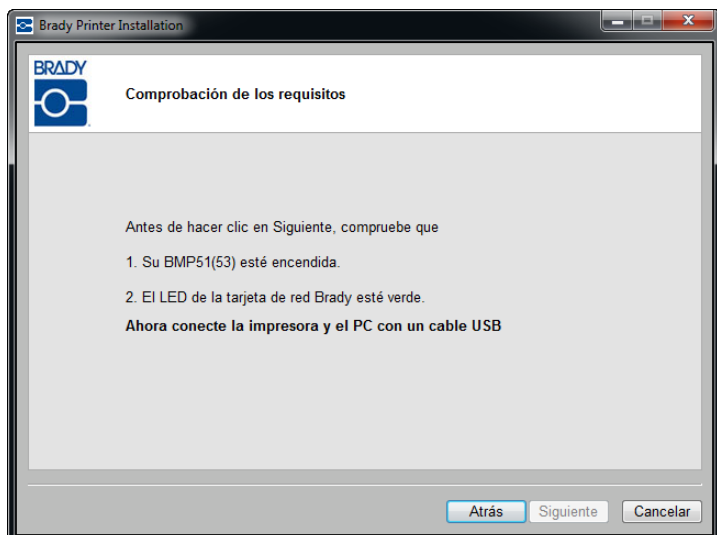
Primera instalación para imprimir mediante WiFi

8. Haga clic en *Instalación por primera vez del controlador de red* (seleccionado de forma predeterminada) y, a continuación, haga clic en **Siguiente**.



Asegúrese de que la impresora esté encendida y de que el piloto LED de la tarjeta de red Brady esté encendido en verde fijo.

9. Conecte la impresora al PC con un cable USB.



Si está instalando los controladores de impresión en Windows XP, aparecerá el *Asistente nuevo hardware encontrado*. Si aparece, continúe con el Paso 11, si no es así, proceda con el Paso 14, en [página 8](#).

10. Haga clic en el botón de selección *Sí, ahora y cada vez que conecte un dispositivo* y haga clic en Siguiente.



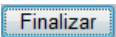
11. Haga clic en *Instalar automáticamente el software (recomendado)* y después en Siguiente.



8 | Instalación de la tarjeta de red Brady

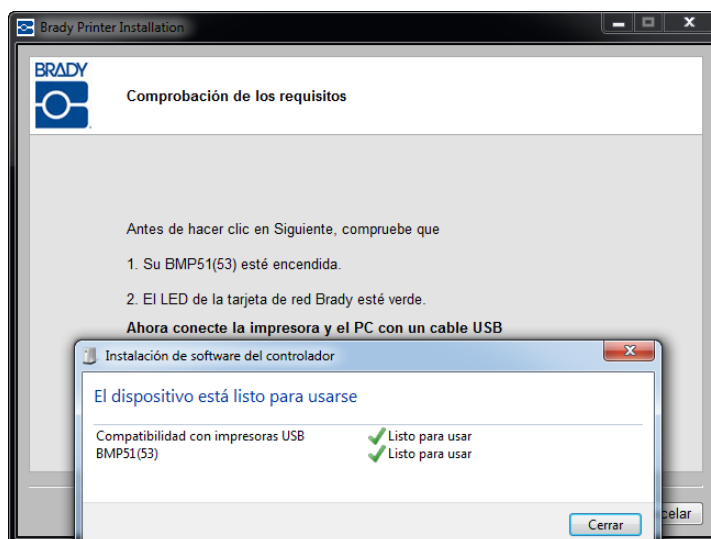
Primera instalación para imprimir mediante WiFi

La instalación continúa.

12. Cuando ya terminado, haga clic en Finalizar  para cerrar el asistente.
13. Haga clic en Siguiente.

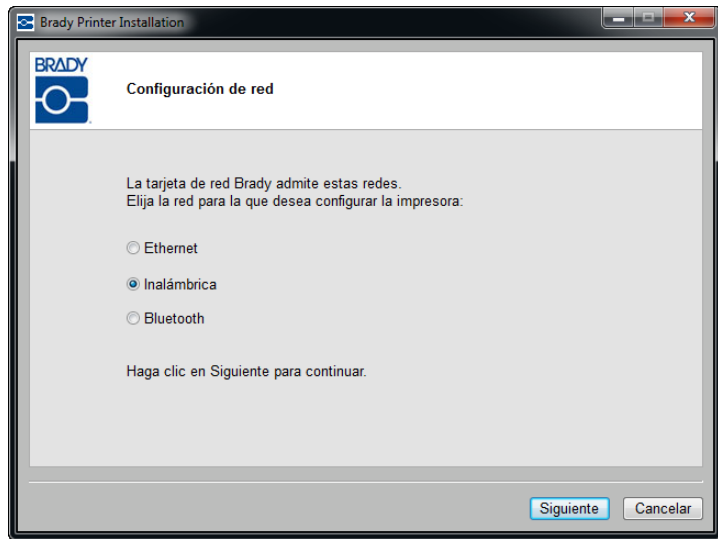


14. Aparecerá un mensaje indicando que su dispositivo está reparado para su uso. Haga clic en Cerrar para quitar este mensaje.
 15. En la ventana Comprobación de requisitos, haga clic en Siguiente.
- La conexión está instalada y verificada.



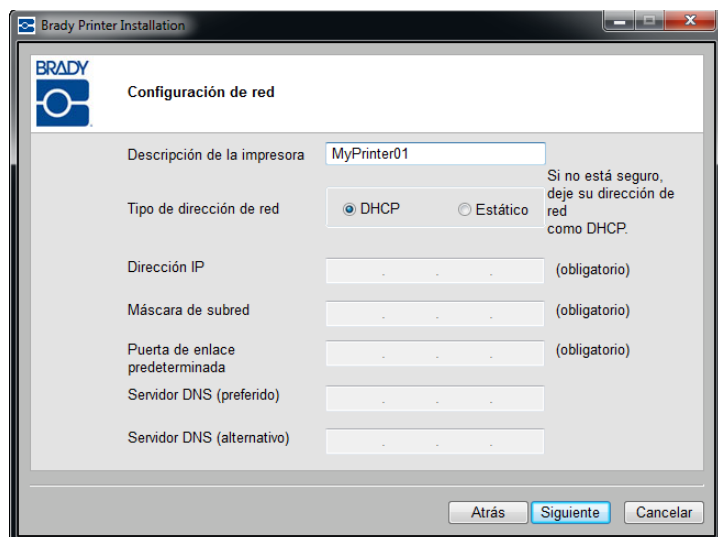
Se muestran las redes admitidas por la tarjeta de red Brady. Para activar WiFi:

16. Haga clic en Inalámbrica y, a continuación, en Siguiente.



17. En el campo *Descripción de la impresora*, escriba un nombre/descripción fácil de identificar para esta conexión de red. Puede usar cualquier carácter alfanumérico.

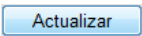
En el campo *Tipo de dirección de red*, se recomienda el protocolo DHCP predeterminado. Si utiliza DHCP, proceda con el Paso 22, en [página 10](#).



Uso de dirección de red estática

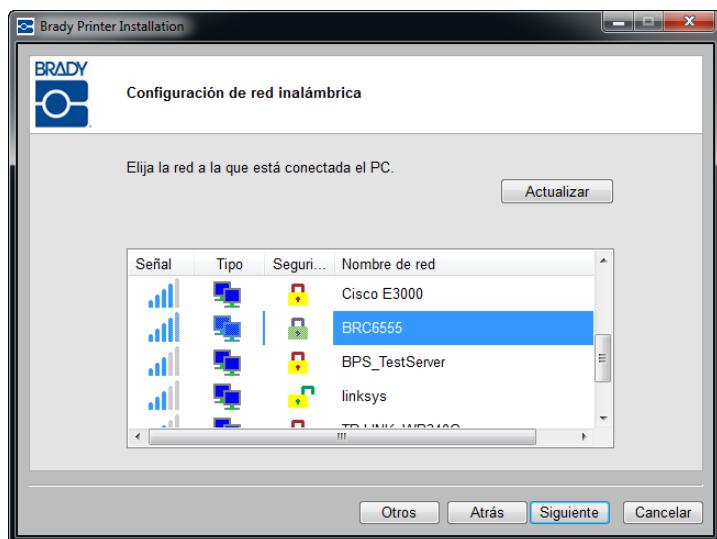
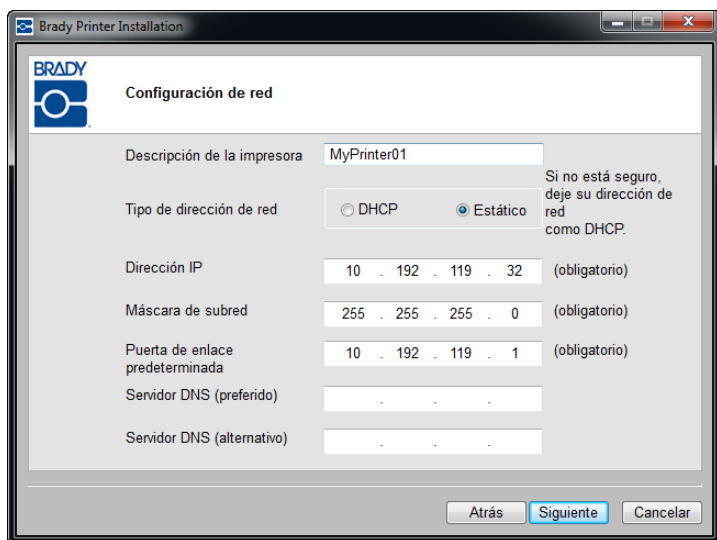
Si desea utilizar una dirección de red estática serán necesarias una dirección IP, una máscara de subred y una puerta de acceso predeterminada. Puede solicitar esta información de su administrador de red. Para usar dirección estática:

18. Haga clic en el botón de selección *Estática*. Esto abre el campo necesario para la entrada de la dirección.
19. Haga clic en el campo *Dirección IP* e introduzca la dirección IP deseada. El cursor se desplaza automáticamente a las secciones independientes del campo de dirección IP.
20. Haga clic en el campo *Máscara de subred* e introduzca la máscara de subred.
21. Haga clic en el campo *Puerta de acceso predeterminada* e introduzca la dirección de la puerta de acceso.
22. Cuando esté listo, haga clic en *Siguiente*.
23. Elija la red a la que está conectado el PC.

Nota: si no ve su red en la lista, haga clic en el botón  Actualizar.

Si aún no ve la red en la lista, puede elegir *Otros* para especificar manualmente una red.

Para nombrar otra red, proceda con el Paso 30 en [página 14](#).



Asegúrese de tener el nombre de red y la clave de paso de red WiFi del PC (si la red está protegida mediante contraseña). Cuando tenga esa información:

24. Haga clic en *Siguiente*.

La tarjeta de red Brady puede configurarse para una conexión de red personal y para una conexión de red de empresa.

Las redes personales, también denominadas WPA PSK, se utilizan habitualmente en viviendas y pequeñas oficinas. La red está protegida mediante una contraseña especificada por el usuario.

Las redes de empresa, también denominadas WPA-802.1X (o simplemente WPA), las utilizan empresas más grandes y que necesitan un servidor RADIUS. El servidor genera la contraseña.

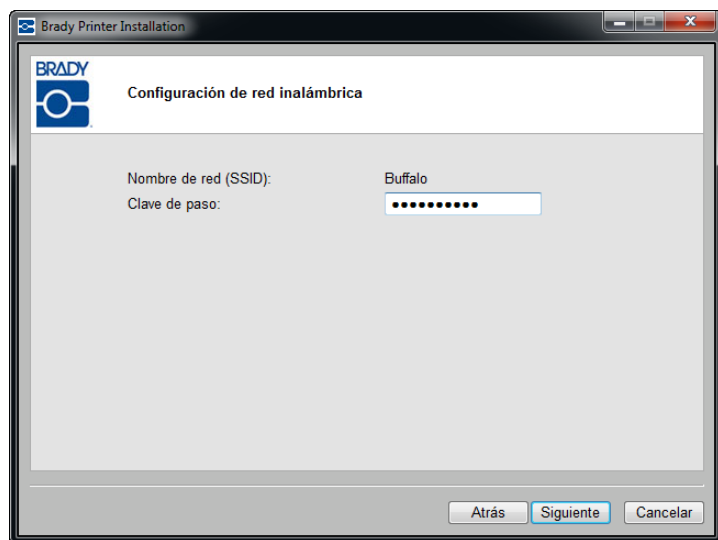
Nota: el instalador detecta automáticamente si la red que ha seleccionado es una red personal o una red de empresa.

Si la red inalámbrica que ha seleccionado de la lista es una red personal:

25. Escriba la clave de paso de la red seleccionada.

Si no conoce la contraseña o el tipo de seguridad, consulte con el administrador de la red.

26. Haga clic en Siguiente.



La conexión está verificada.

Si seleccionó una dirección estática en el Paso 18, la impresora de red ya está establecida y etiquetada con la dirección IP que introdujo en el Paso 19. La impresora está instalada. Proceda con el Paso 48, en [página 20](#). De lo contrario, proceda con los Servicios de impresión Bonjour, comenzando en [página 17](#).

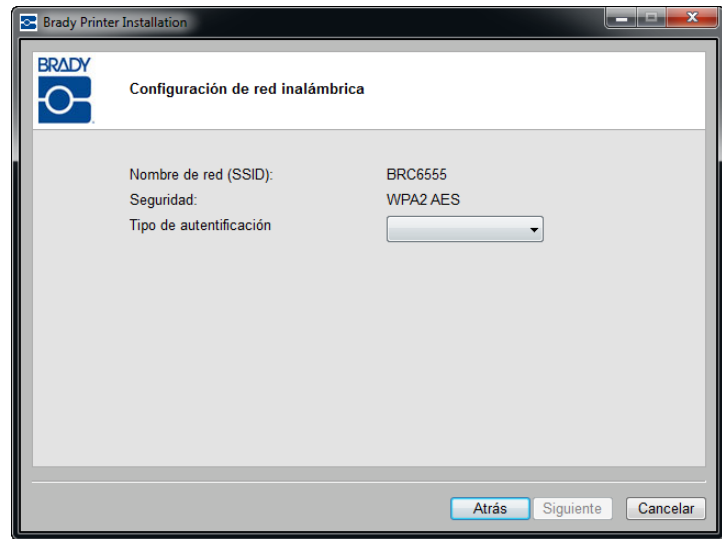


12 | Instalación de la tarjeta de red Brady

Primera instalación para imprimir mediante WiFi

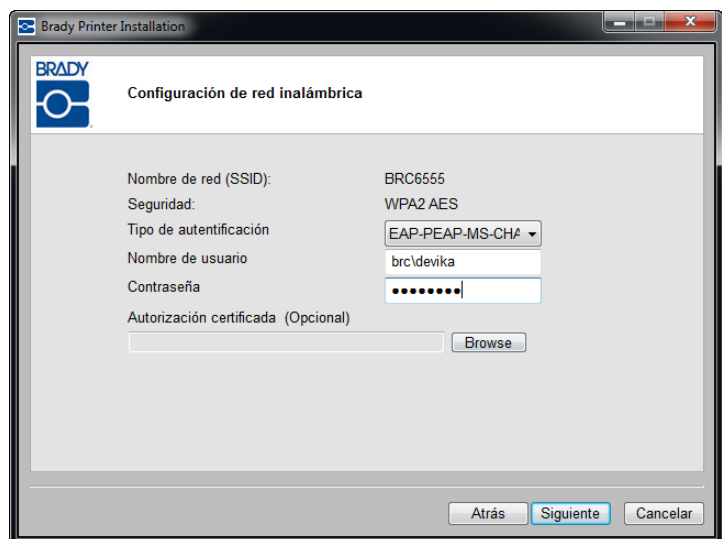
Si la red inalámbrica que ha seleccionado de la lista es una red de empresa:

27. Haga clic en la flecha hacia abajo y seleccione el *Tipo de autenticación*. (Si no conoce el tipo de autenticación, diríjase a su administrador de red.)



28. Introduzca el nombre de usuario y contraseña, en caso necesario. Diríjase a su administrador de red para determinar si su nombre de usuario ya le ha sido asignado.

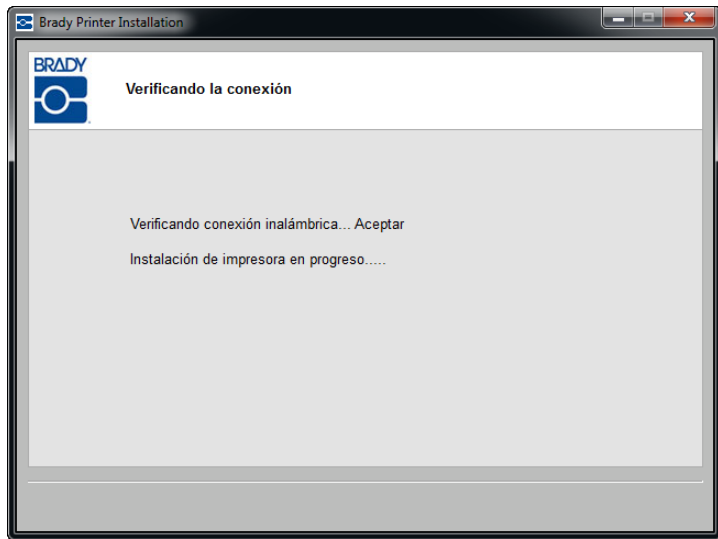
Nota: dependiendo del tipo de autenticación seleccionado, podría requerirse o no un nombre de usuario, contraseña y certificados. Consulte la tabla de autenticación en [página 14](#) para obtener más información.



29. Cuando esté listo, haga clic en Siguiente.

La conexión inalámbrica está verificada.

Si utilizó una dirección estática en el Paso 18 o si su PC e impresora no se encuentran en la misma máscara de subred, la impresora de red ya ha sido establecida y etiquetada con la dirección IP que introdujo o con la dirección IP DHCP. La impresora está instalada. Proceda con el Paso 48 en [página 20](#).



De lo contrario, proceda con los Servicios de impresión Bonjour, comenzando en [página 17](#).

Métodos y tipos de autenticación

El instalador de la tarjeta Brady admite varios métodos y tipos de autenticación. Las siguientes tablas indican los métodos de autenticación 802.1X admitidos para redes de empresa WPA y WPA2 y los campos obligatorios o necesarios para el tipo de autenticación que utilice. Consulte estas tablas al escoger el tipo de autenticación.

| Authentication Methods Supported | EAP-TLS | EAP-TTLS | PEAP v0 |
|----------------------------------|--------------------------------------|----------|---------|
| Certificate Formats Supported | PKCS1 | PKCS12 | |
| | .DER .PEM .CER .CRT .KEY | .PFX | |

Tabla 1. Métodos de autenticación

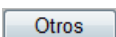
| Authentication Type | Username | Password/ Private key Password | CA Certificate | Client Certificate | Client Key |
|---------------------|-----------|--|-------------------|-----------------------|--------------|
| EAP-PEAP-MSCHAPV2 | Mandatory | Mandatory | Optional | Not Required | Not Required |
| EAP-TTLS-MSCHAPV2 | Mandatory | Mandatory | Optional | Not Required | Not Required |
| EAP-TLS | Mandatory | Not Required | Optional | Mandatory | Mandatory |
| EAP-TLS | Mandatory | Required if Client Cert is in .PFX format | Optional | Mandatory | Not Required |

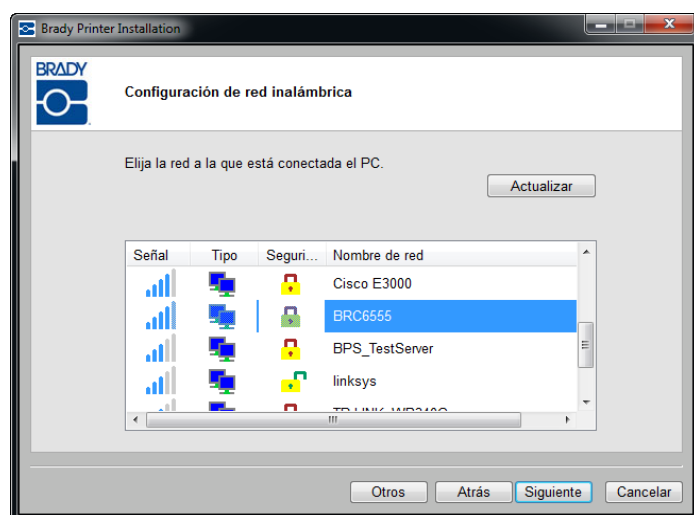
Tabla 2. Tipo de autenticación

Definición de Otras redes

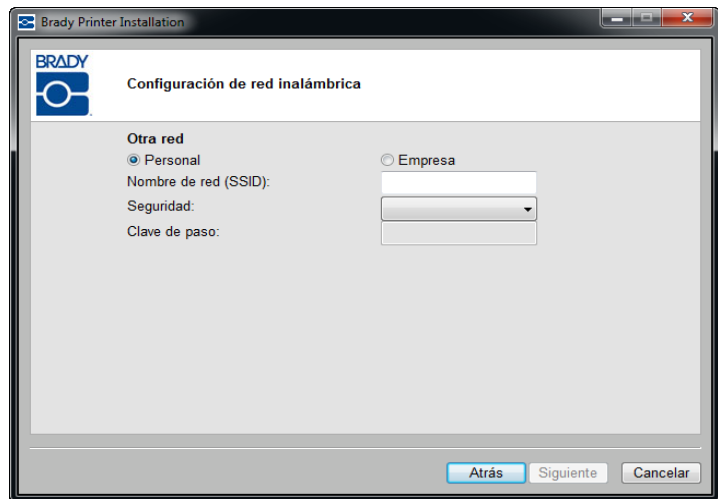
Al definir Otras redes, deberá conocer el nombre de la red (SSID), la seguridad aplicada y una contraseña, si fuera necesaria. Puede solicitar esta información de su administrador de red.

Para nombrar otra red:

- En la pantalla Ajustes de red inalámbrica, haga clic en el botón **Otra** .



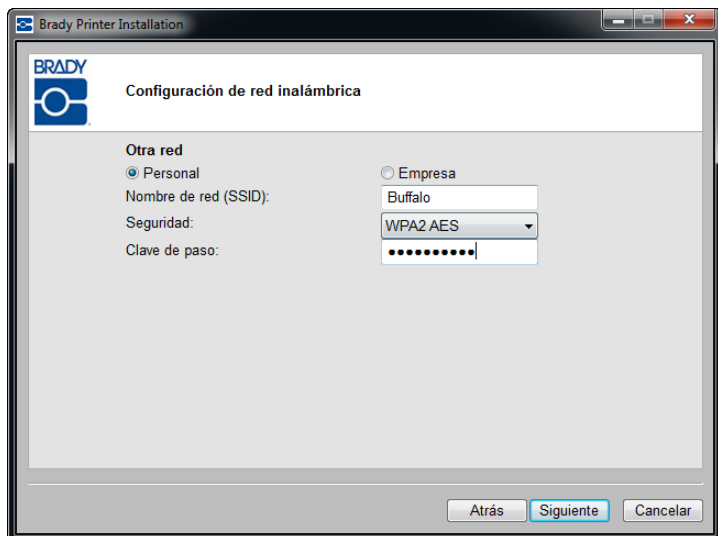
31. En la pantalla de red *Otra*, haga clic en el botón de selección, red personal o red de empresa que mejor describa su red.



Red personal

32. Al hacer clic en red personal, introduzca el nombre de red (SSID).
33. En el campo de seguridad, haga clic en la flecha hacia abajo y seleccione el tipo de seguridad.

Dependiendo de la seguridad seleccionada, tendrá o no que proporcionar una contraseña. Consulte las tablas de tipos y métodos de autenticación en [página 14](#) para obtener más información.



Nota: no tendrá que suministrar un tipo de autenticación para redes personales.

16 | Instalación de la tarjeta de red Brady

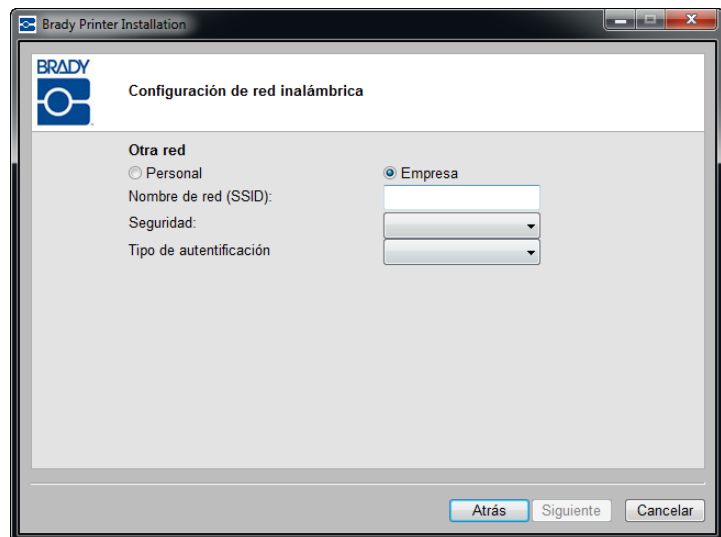
Primera instalación para imprimir mediante WiFi

Red de empresa

Al hacer clic en red de empresa:

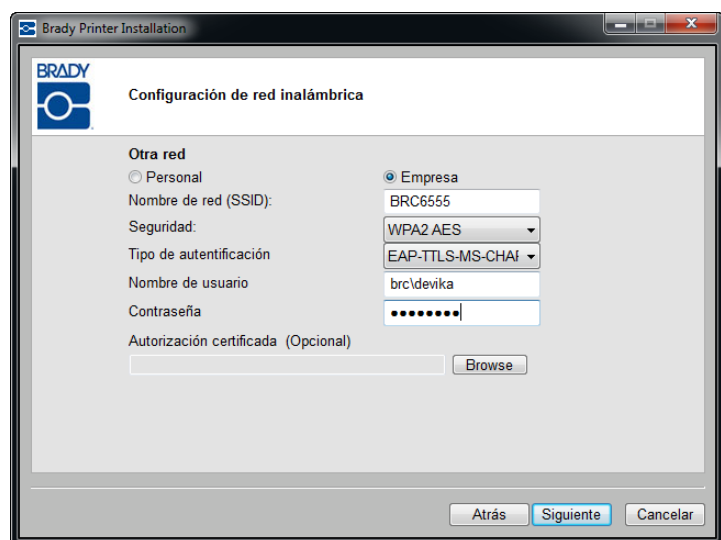
34. Introduzca el nombre de red (SSID).
35. En el campo de seguridad, haga clic en la flecha hacia abajo y seleccione el tipo de seguridad.

Nota: si encuentra la red en la lista, el nombre de red y la seguridad se rellenarán automáticamente.



36. Haga clic en la flecha hacia abajo y seleccione el *Tipo de autenticación*. (Si no conoce el tipo de autenticación, diríjase a su administrador de red.)
37. Introduzca el nombre de usuario y contraseña, en caso necesario. Diríjase a su administrador de red para determinar si su nombre de usuario ya le ha sido asignado.

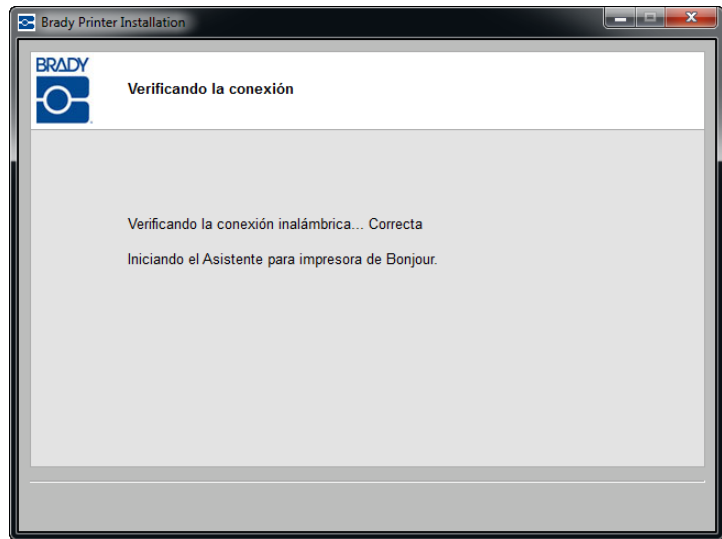
Nota: dependiendo del tipo de autenticación seleccionado, podría requerirse o no un nombre de usuario, contraseña y certificados. Consulte la tabla de autenticación en [página 14](#) para obtener más información.



38. Cuando esté listo, haga clic en Siguiente.

La conexión inalámbrica está verificada.

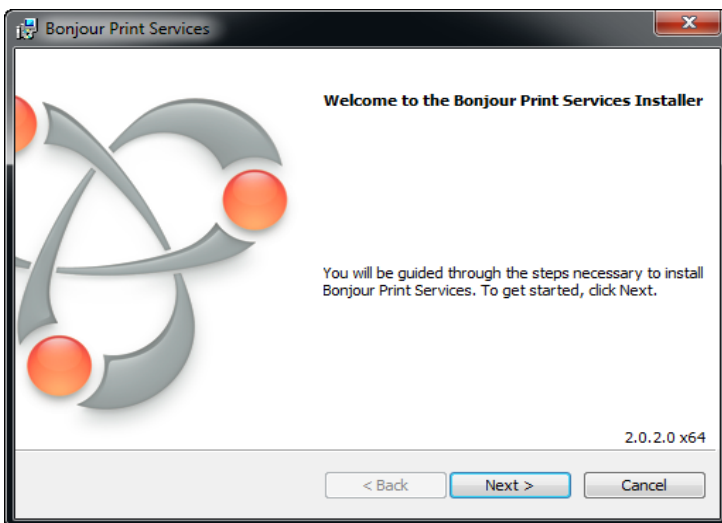
Si utilizó una dirección estática en el Paso 18 o si su PC e impresora no se encuentran en la misma máscara de subred, la impresora de red ya ha sido establecida y etiquetada con la dirección IP que introdujo o con la dirección IP DHCP. La impresora está instalada. Proceda con el Paso 48 en [página 20](#).



Servicios de impresión Bonjour

Si utilizó la opción predeterminada DHCP con el PC y la impresora en la misma máscara de subred, la conexión es correcta y se ejecuta el asistente de Bonjour. El programa Bonjour está diseñado para establecer y supervisar las impresoras en red. El asistente Bonjour Printer Wizard establece la impresora Brady como una impresora de red.

39. Haga clic en Siguiente.

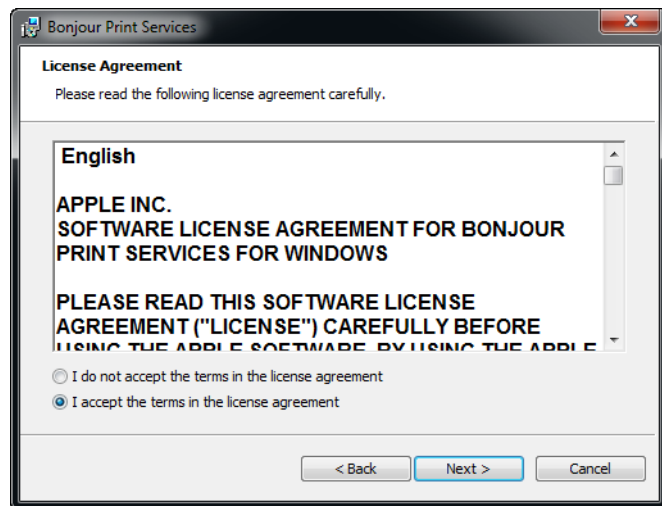


18 | Instalación de la tarjeta de red Brady

Primera instalación para imprimir mediante WiFi

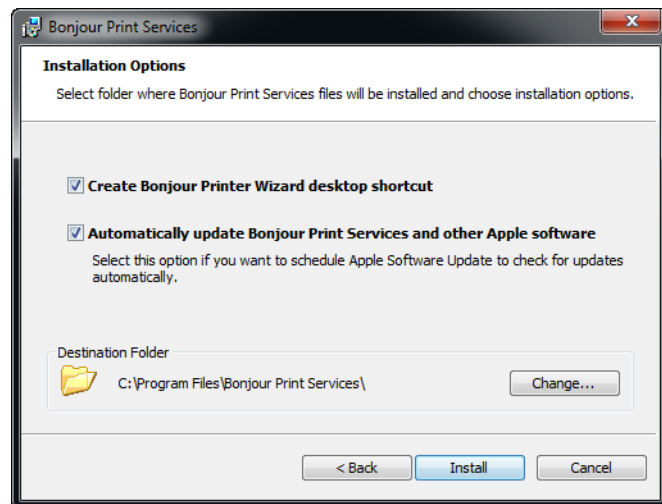
Se muestra el Apple End User License Agreement de Apple.

40. Después de leerlo, haga clic en Acepto los términos en el contrato de licencia y haga clic en Siguiente para continuar.
41. Haga clic de nuevo en Siguiente en la pantalla Leer información.

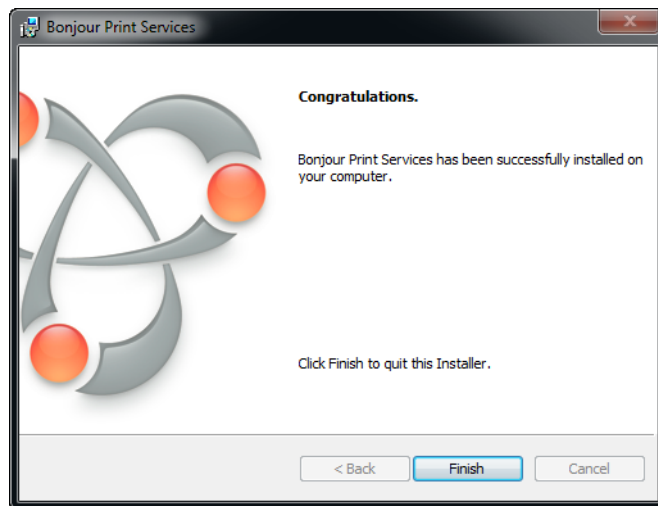


Determine las opciones que desee aplicar en el asistente Bonjour y dónde quiere guardar el software Servicios de impresión Bonjour.

42. Si quiere cambiar la ubicación de instalación predeterminada, haga clic en Cambiar y siga los procedimientos habituales de Windows para seleccionar un directorio distinto.
43. Cuando esté listo, haga clic en Instalar.



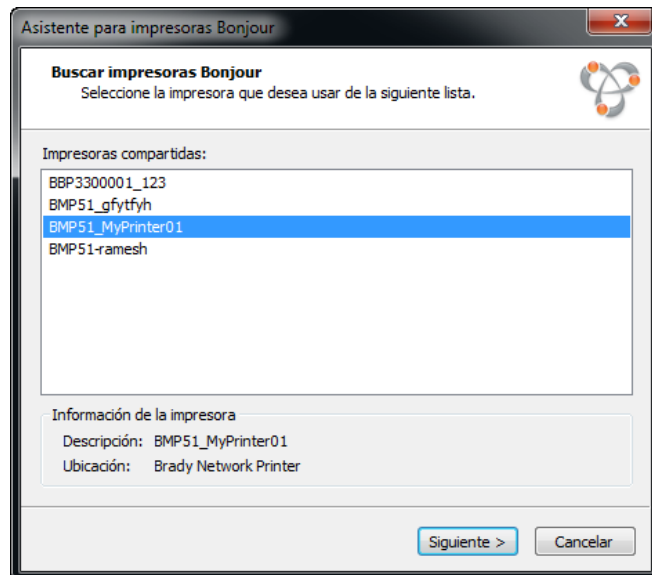
44. Cuando los Servicios de impresión Bonjour están instalados, haga clic en Finalizar.



45. Haga clic en el nombre de impresora de red asignado.

Para una más fácil identificación, el nombre o la descripción que asignó en el Paso 17 se muestra en la esquina inferior izquierda de la pantalla.

46. Haga clic en Siguiente.



47. Una vez completado el asistente para impresoras Bonjour, haga clic en Finish.



La instalación de la impresora Brady se ha completado.

48. Haga clic en Finish para salir del asistente.



Primera instalación para imprimir mediante Ethernet

Use este proceso de instalación:

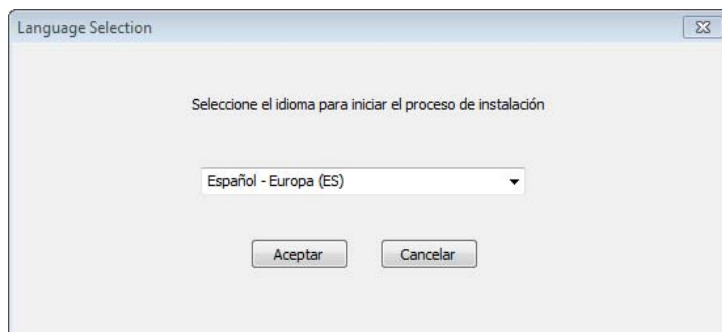
- ☒ **Si acaba de adquirir la impresora y la está configurando por primera vez.**
- ☒ **Si desea enviar trabajos de impresión a la impresora desde un PC mediante Ethernet o a través de una red LAN.**

La tarjeta de red Brady se configura para admitir conexiones Ethernet o WiFi. No se pueden tener ambas conexiones activas al mismo tiempo. Para activar la conexión Ethernet:

1. Asegúrese de que la impresora y el PC **NO** están conectados con un cable USB.
2. Inserte el CD de controladores de la impresora Brady en la unidad de CD del ordenador.

El asistente para la instalación se inicia automáticamente.

3. Encienda la impresora.
4. Seleccione su idioma de la lista desplegable y, a continuación, haga clic en Aceptar.

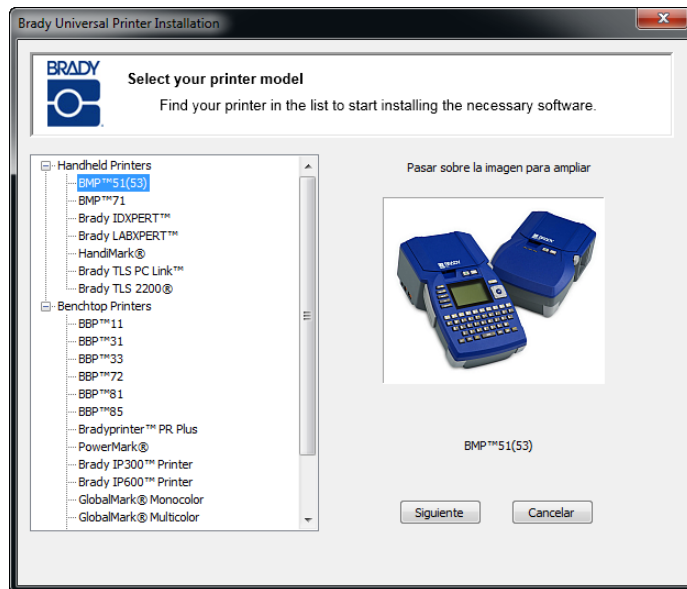


22 | Instalación de la tarjeta de red Brady

Primera instalación para imprimir mediante Ethernet

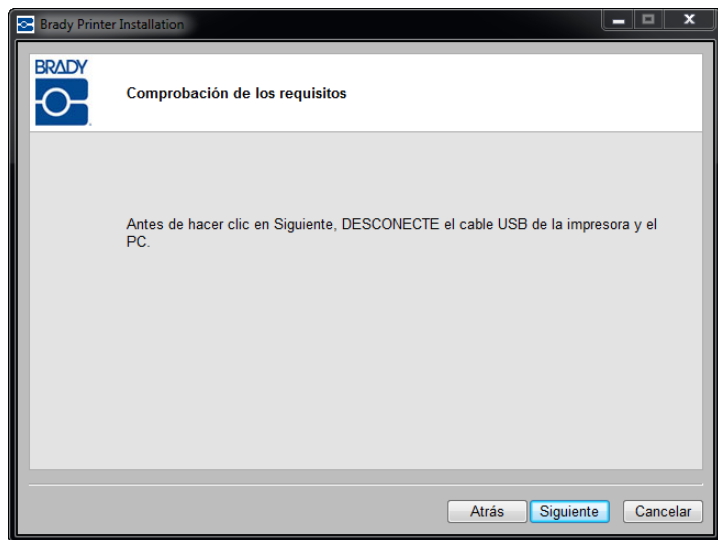
5. Haga clic en el modelo de impresora que está instalando y, a continuación, haga clic en Siguiente.

El Instalador de Windows instalará la aplicación de configuración de la red de configuración Brady.

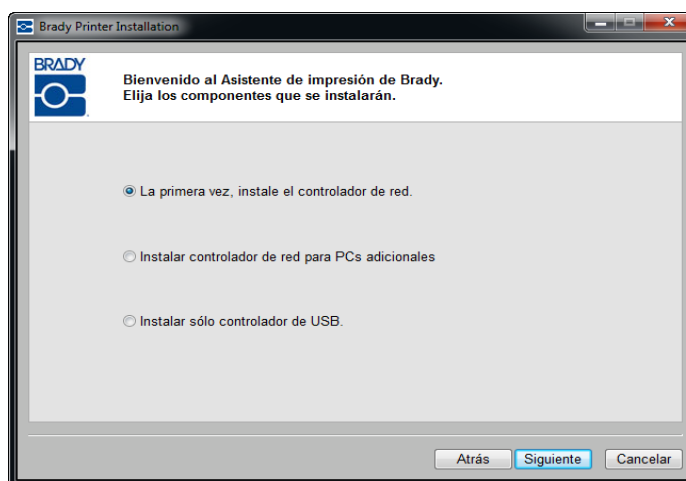


6. Si la impresora y el PC aún están conectados con un cable USB, DESCONÉCTELO ahora.

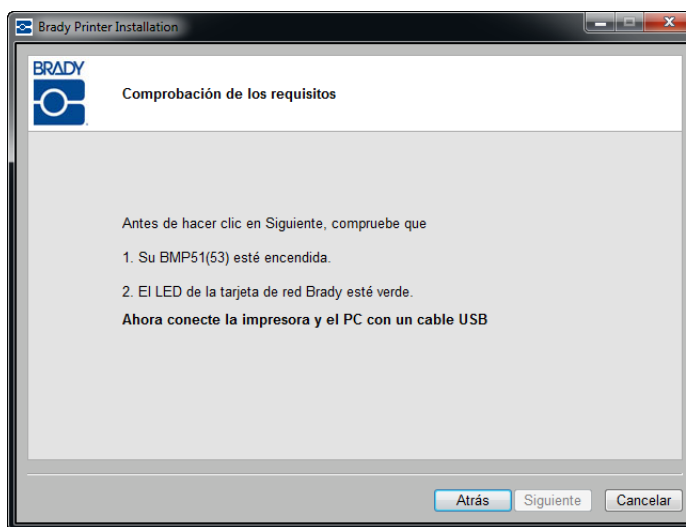
7. Haga clic en Siguiente.



8. Haga clic en *Instalación por primera vez del controlador de red* (seleccionado de forma predeterminada) y, a continuación, haga clic en **Siguiente**.



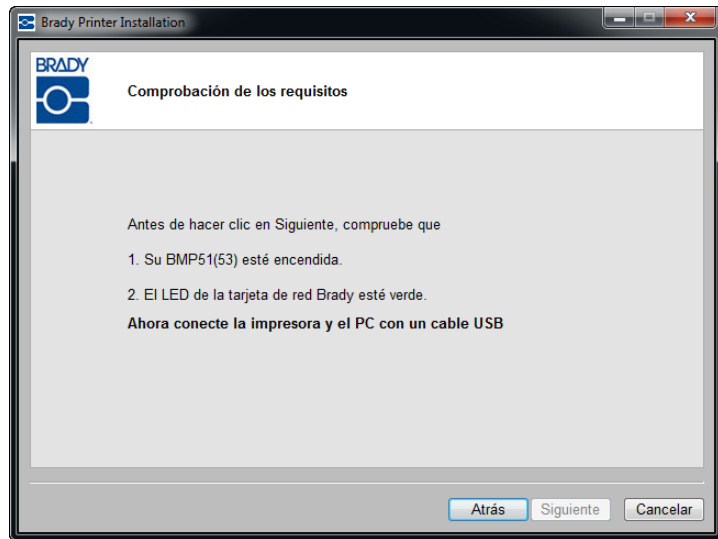
9. Asegúrese de que la impresora esté encendida y de que el piloto LED de la tarjeta de red Brady esté encendido en verde fijo.



24 | Instalación de la tarjeta de red Brady

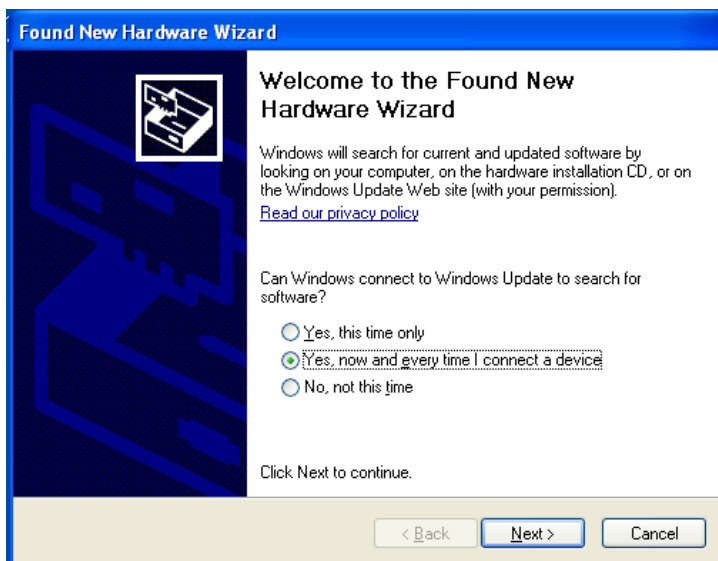
Primera instalación para imprimir mediante Ethernet

10. Conecte la impresora al PC con un cable USB y, a continuación, haga clic en Siguiente.



Si está instalando los controladores de impresión en Windows XP, aparecerá el *Asistente nuevo hardware encontrado*. Si aparece, continúe con el Paso 11, si no es así, proceda con el Paso 15 en [página 26](#).

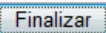
11. Haga clic en el botón de selección *Sí, ahora y cada vez que conecte un dispositivo* y haga clic en Siguiente.



12. Haga clic en *Instalar automáticamente el software (recomendado)* y después en Siguiente.



La instalación continúa.

13. Cuando ya terminado, haga clic en Finalizar  para cerrar el asistente.

14. Haga clic en Siguiente.

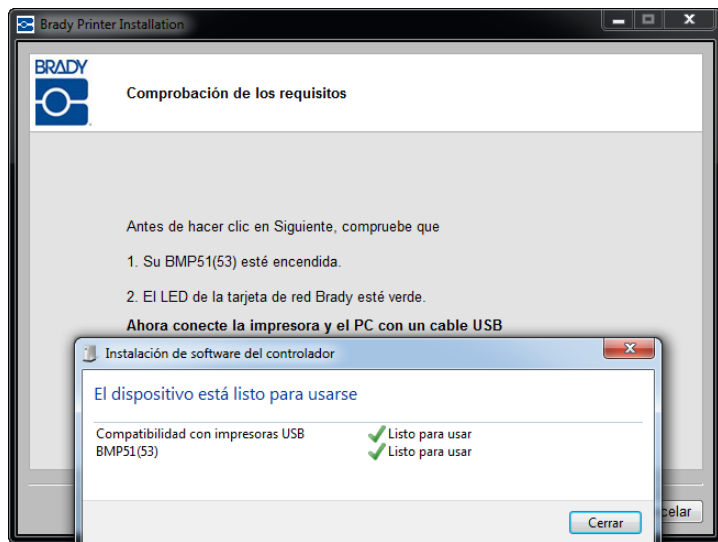


26 | Instalación de la tarjeta de red Brady

Primera instalación para imprimir mediante Ethernet

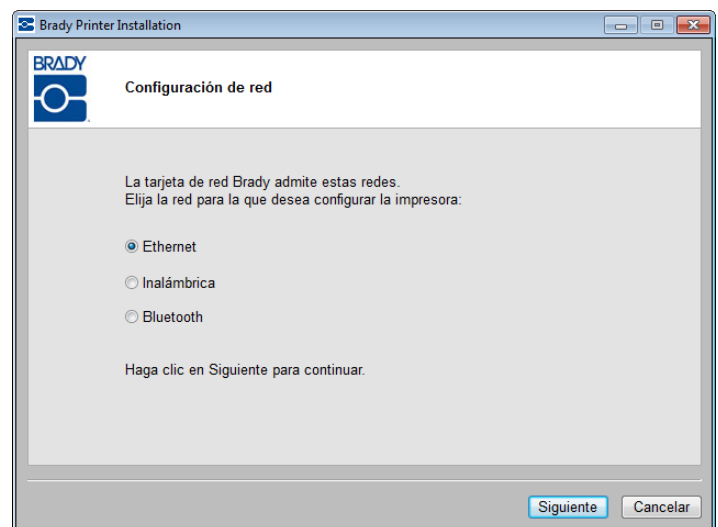
15. Aparecerá un mensaje indicando que su dispositivo está reparado para su uso. Haga clic en Cerrar para quitar este mensaje.

La conexión está instalada y verificada.



Se muestran las redes admitidas por la tarjeta de red Brady. Para activar Ethernet:

16. Haga clic en el botón de selección *Ethernet* y, a continuación, en Siguiente.



17. En el campo *Descripción de la impresora*, escriba un nombre/descripción fácil de identificar para esta conexión de red. Puede usar cualquier carácter alfanumérico.

En el campo *Tipo de dirección de red*, se recomienda el protocolo DHCP predeterminado. Si utiliza DHCP, proceda con el Paso 22 en [página 27](#).

Uso de dirección de red estática

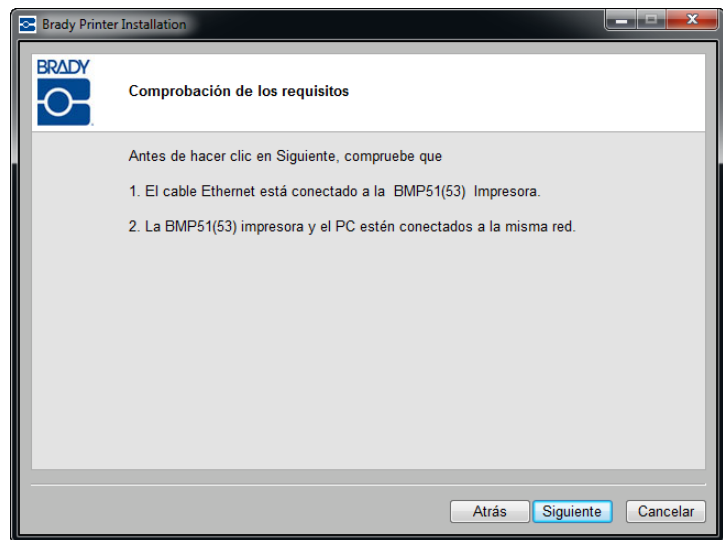
Si desea utilizar dirección estática, son necesarios los campos Dirección IP, Máscara de subred y Puerta de enlace predeterminada. Puede solicitar esta información de su administrador de red. Para usar dirección estática:

18. Haga clic en el botón de selección *Estática*. Esto abre el campo necesario para la entrada de la dirección.
19. Haga clic en el campo *Dirección IP* e introduzca la dirección IP deseada. El cursor se desplaza a las secciones independientes del campo de dirección IP.
20. Haga clic en el campo *Máscara de subred* e introduzca la máscara de subred.
21. Haga clic en el campo *Puerta de acceso predeterminada* e introduzca la dirección de la puerta de acceso.
22. Cuando esté listo, haga clic en Siguiente.

28 | Instalación de la tarjeta de red Brady

Primera instalación para imprimir mediante Ethernet

Asegúrese de que el cable de Ethernet esté conectado a la impresora y de que su impresora y el PC estén conectados a la misma red.



Para verificar que la impresora y el PC están en la misma red, consulte las directrices de conexión que aparecen a continuación.

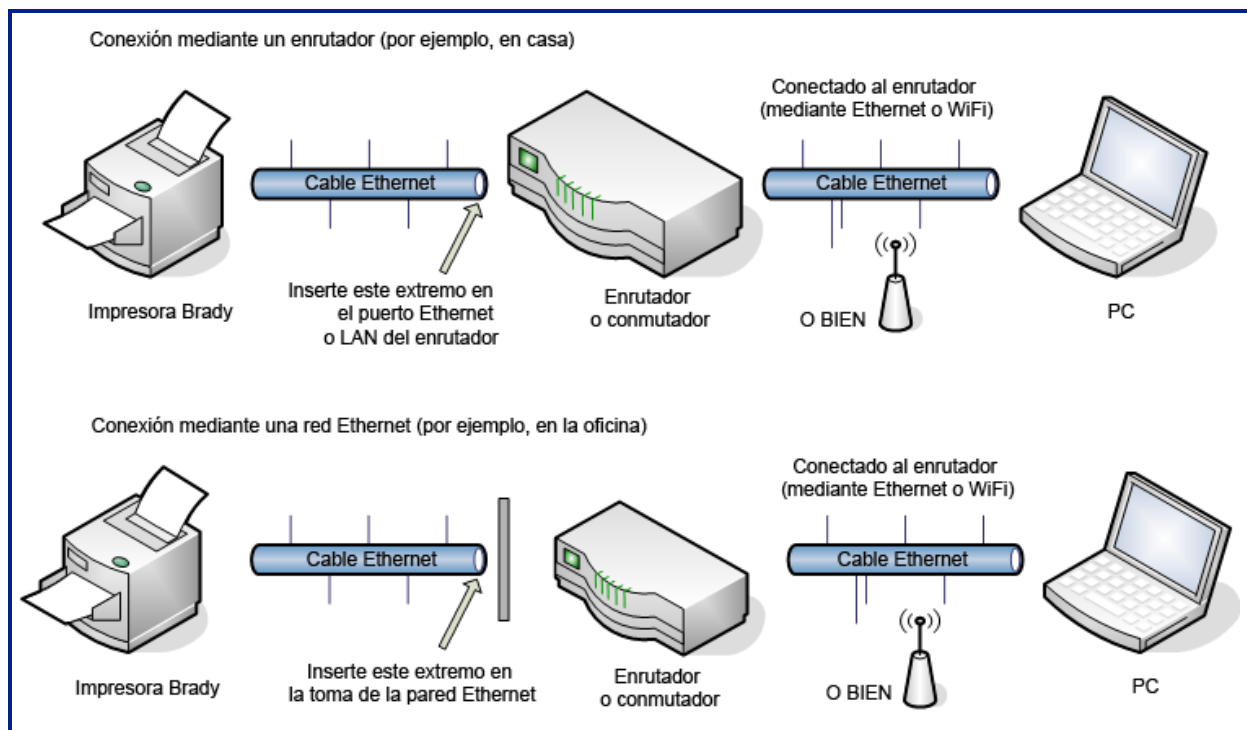
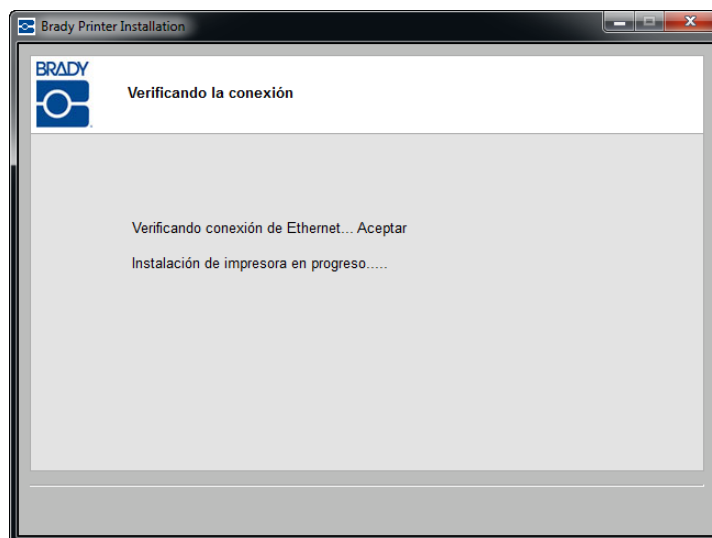


Figura 1 • Conexiones de red

23. Haga clic en Siguiente.

La conexión Ethernet está verificada.

Si seleccionó una dirección estática en el Paso 18, las impresoras de red ya están establecidas y etiquetadas con la dirección IP que introdujo en el Paso 19. Proceda con el Paso 33 en [página 32](#).

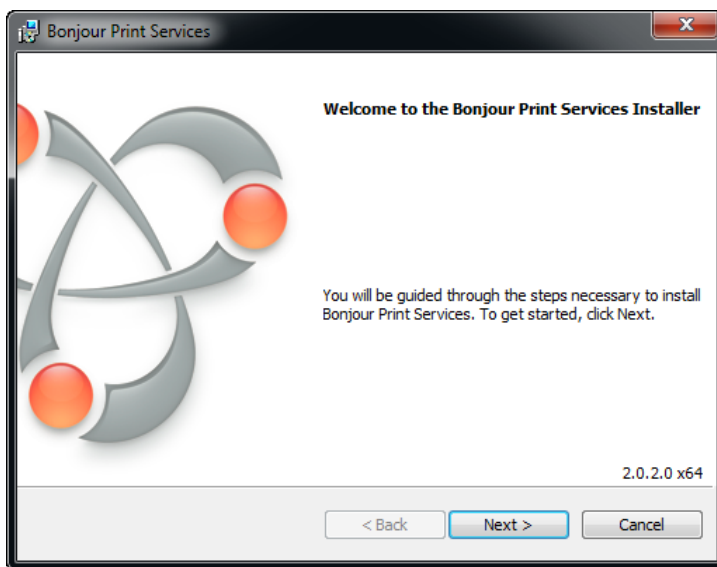


De lo contrario, proceda con el siguiente programa Servicios de impresión Bonjour.

Servicios de impresión Bonjour

Si utilizó la opción predeterminada DHCP con el PC y la impresora en la misma máscara de subred y la conexión Ethernet es correcta, se ejecuta el asistente de Bonjour. El programa Bonjour está diseñado para establecer y supervisar las impresoras en red. El asistente Bonjour Printer Wizard establece la impresora Brady como una impresora de red.

24. Haga clic en Siguiente.



30 | Instalación de la tarjeta de red Brady

Primera instalación para imprimir mediante Ethernet

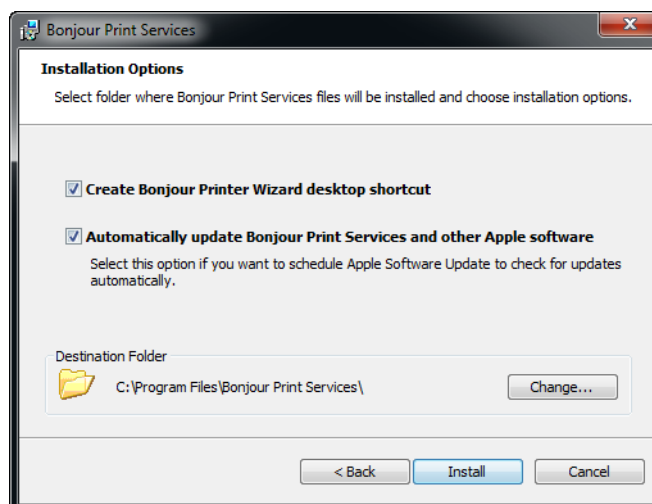
Se muestra el Apple End User License Agreement de Apple.

25. Después de leerlo, haga clic en *Acepto los términos en el contrato de licencia* y haga clic en Siguiente para continuar.
26. Haga clic de nuevo en Siguiente en la pantalla Leer información.

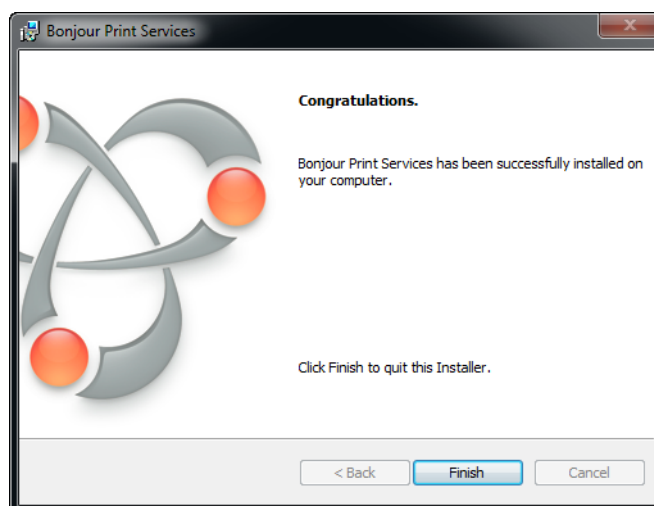


Determine las opciones que desee aplicar en el asistente Bonjour y dónde quiere guardar el software Servicios de impresión Bonjour.

27. Si quiere cambiar la ubicación de instalación predeterminada, haga clic en Cambiar y siga los procedimientos habituales de Windows para seleccionar un directorio distinto.
28. Cuando esté listo, haga clic en Instalar.



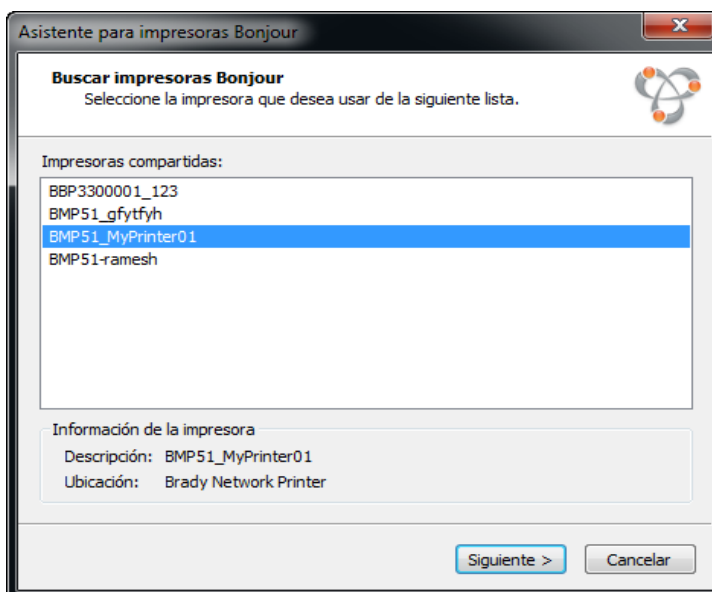
29. Cuando los Servicios de impresión Bonjour están instalados, haga clic en Finalizar.



30. Haga clic en el nombre de impresora de red asignado.

Para una más fácil identificación, el nombre o la descripción que asignó en el Paso 17 se muestra en la esquina inferior izquierda de la pantalla.

31. Haga clic en Siguiente.



32 | Instalación de la tarjeta de red Brady

Primera instalación para imprimir mediante Ethernet

32. Una vez completado el asistente para impresoras Bonjour, haga clic en Finish.



La instalación de la impresora Brady se ha completado.

33. Haga clic en Finish para salir del asistente.



Impresión mediante Bluetooth para teléfonos móviles

Si su teléfono tiene la aplicación para móviles Brady instalada, puede enviar trabajos de impresión directamente a la impresora a través de Bluetooth. No es necesario que ejecute ningún software de instalación. Su impresora debe estar encendida y el LED de la tarjeta de red Brady iluminarse en verde.

PIN predeterminado

Si la aplicación para móviles Brady solicita el PIN (número de identificación personal) de la impresora Brady con la que está estableciendo comunicación, inicialmente use el PIN predeterminado: 0000.

Puede cambiar este PIN mediante la Utilidad de configuración de la tarjeta de red Brady. Consulte la [página 41](#) (Instalación sólo del controlador de USB) para ver los pasos para instalar la utilidad de configuración. Consulte la [página 77](#) para obtener información acerca de cómo cambiar el PIN.

Nombre predeterminado

También puede cambiar el nombre de dispositivo de impresora mediante la Utilidad de configuración de la tarjeta de red. Consulte la [página 41](#) (Instalación sólo del controlador de USB) para ver los pasos para instalar la utilidad de configuración. Consulte la [página 77](#) para obtener información acerca de cómo cambiar el nombre de la impresora.

Instalación para PCs adicionales

Use este proceso de instalación si la impresora ya se ha configurado anteriormente pero ahora desea usar otro PC para enviar trabajos de impresión a la impresora.

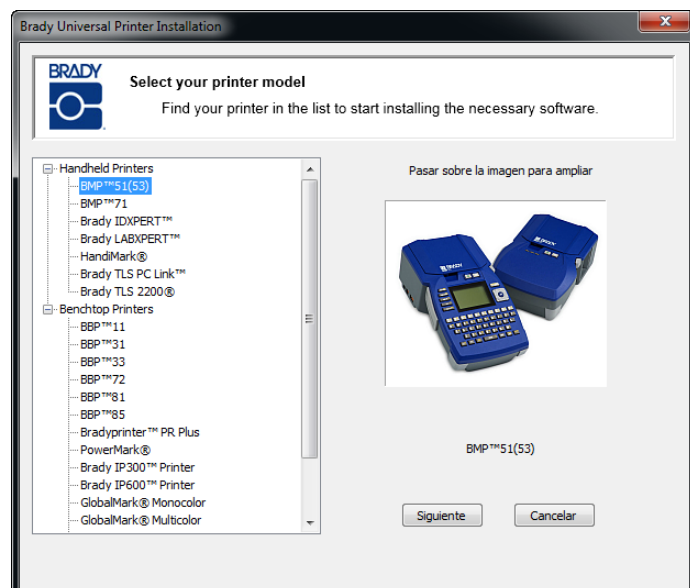
Nota: el PC adicional debe estar en la misma red que la impresora. De lo contrario, no se detectará durante la instalación.

Una vez configurada la tarjeta de red Brady para Ethernet o WiFi, puede instalar estos controladores de red en PCs adicionales.

1. Inserte el CD de controladores de la impresora universal Brady en la unidad de CD del ordenador.

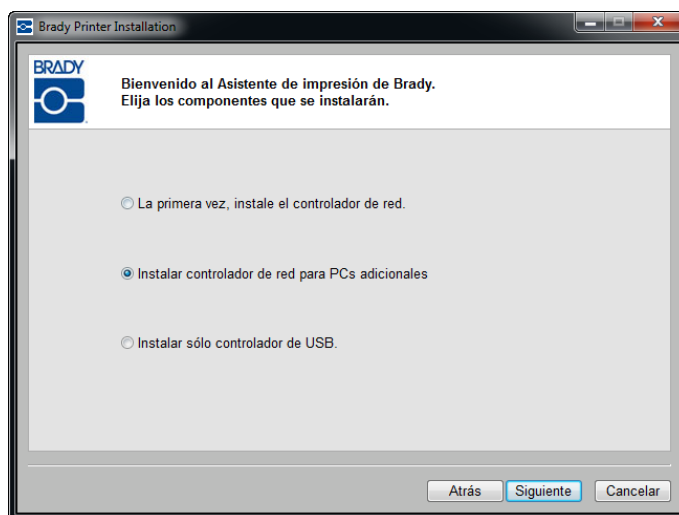
El asistente para la instalación se inicia automáticamente.

2. Haga clic en el modelo de impresora que está instalando.
3. Haga clic en Siguiente.

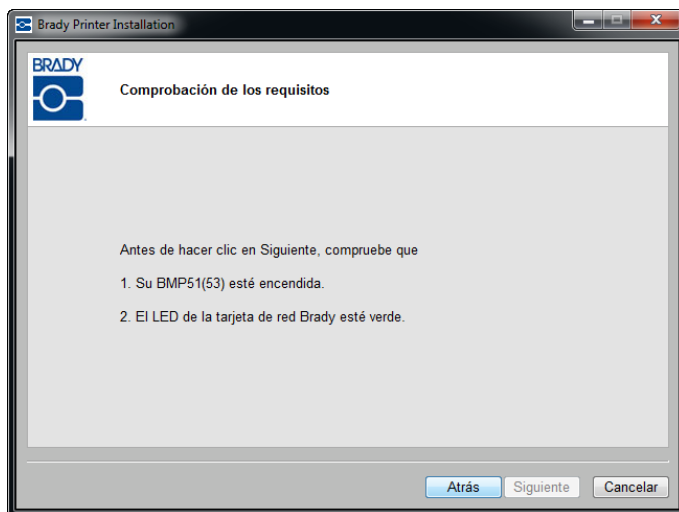


4. Haga clic en *Instalar controlador de red para PCs adicionales*.

5. Haga clic en Siguiente.



6. Después de comprobar que la impresora está encendida y que la tarjeta de red Brady funciona correctamente (indicado por el piloto verde), haga clic en Siguiente.

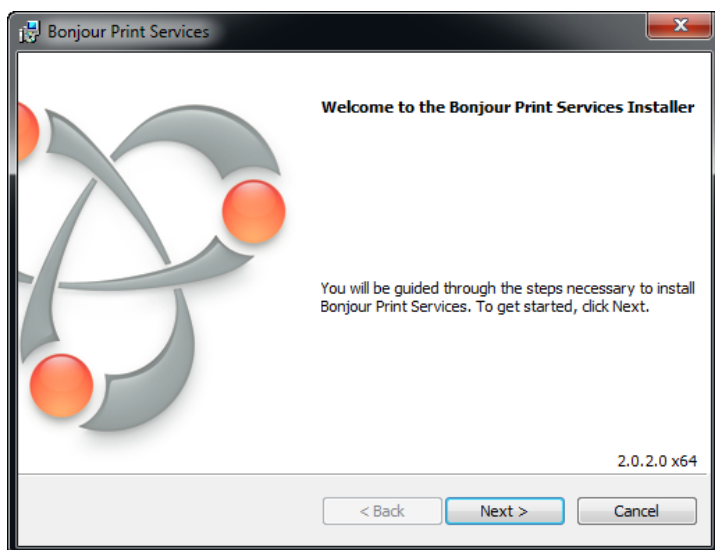


Servicios de impresión Bonjour

Se inicia el asistente Bonjour.

El programa Bonjour está diseñado para establecer y supervisar las impresoras en red. El asistente Bonjour Printer Wizard establece la impresora Brady como una impresora de red.

7. Haga clic en Siguiente.



Se muestra el Apple End User License Agreement de Apple.

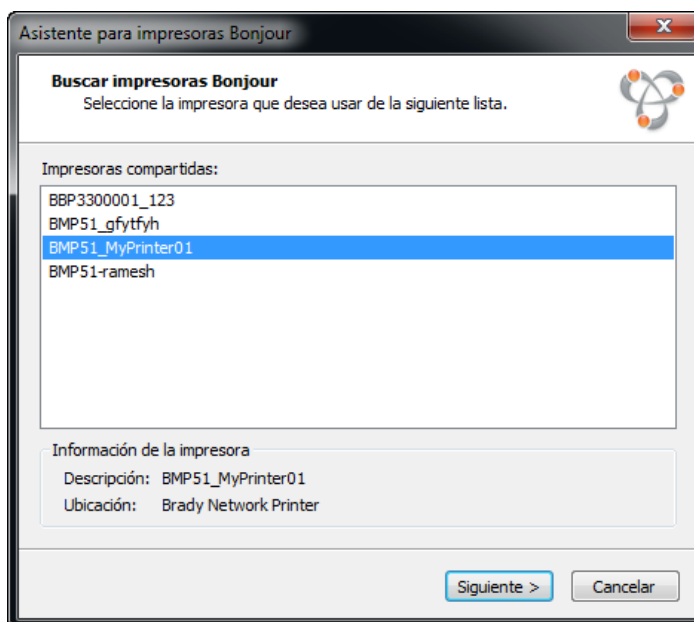
8. Después de leerlo, haga clic en *Acepto los términos en el contrato de licencia* y haga clic en Siguiente para continuar.



9. Haga clic en el nombre de impresora de red asignado.

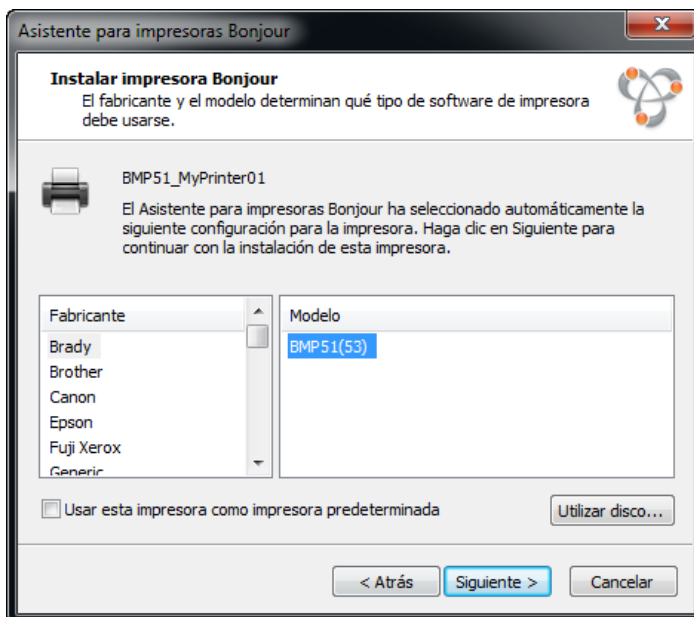
Para una más fácil identificación, el nombre o la descripción que asignó se muestra en la esquina inferior izquierda de la pantalla.

10. Haga clic en Siguiente.

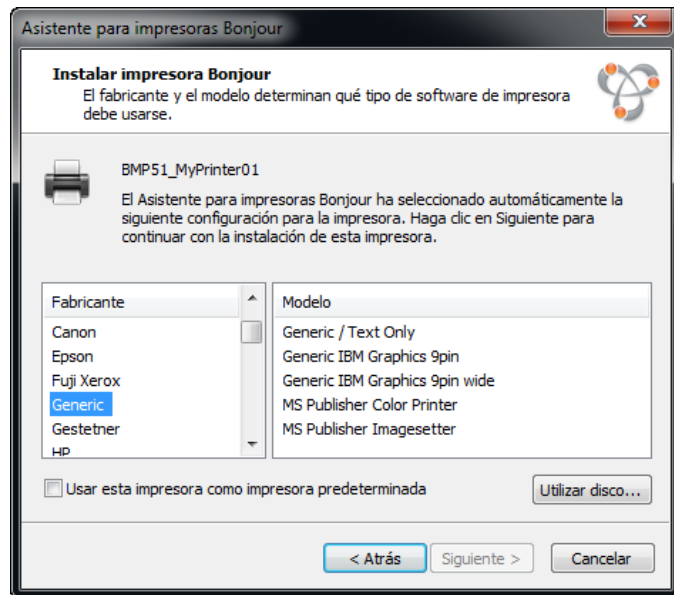


11. En el campo *Manufacturer*, haga clic en Brady (los fabricantes aparecen en orden alfabético); a continuación, el campo *Model*, haga clic en la impresora que se instalará.

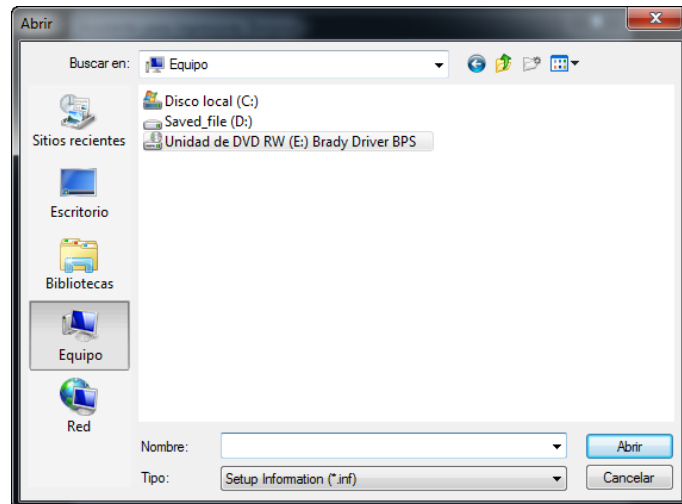
12. Haga clic en Siguiente.



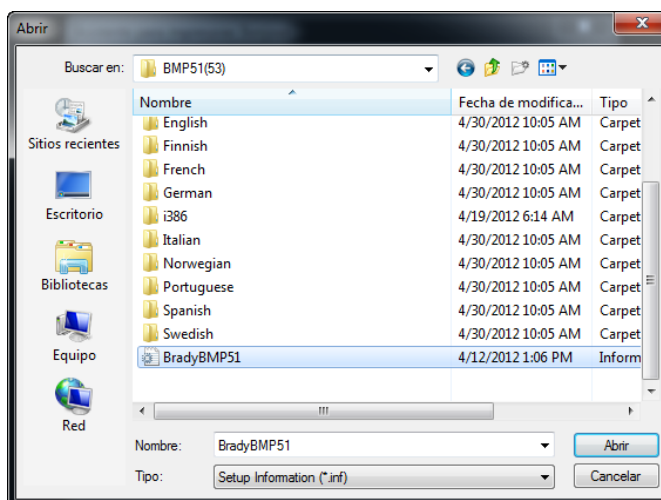
13. Si no se encuentra Brady en el campo *Manufacturer*, haga clic en Have Disk.



14. Vaya al CD y localice el archivo .INF correspondiente a su modelo de impresora.



En el ejemplo que aparece a la derecha, se muestra el archivo .inf para instalar una impresora BMP51.



15. Una vez completado el asistente para impresoras Bonjour, haga clic en Finish.



- 16.** La instalación de la impresora Brady se ha completado. Haga clic en Finish para salir del asistente.



Instalación sólo del controlador de USB

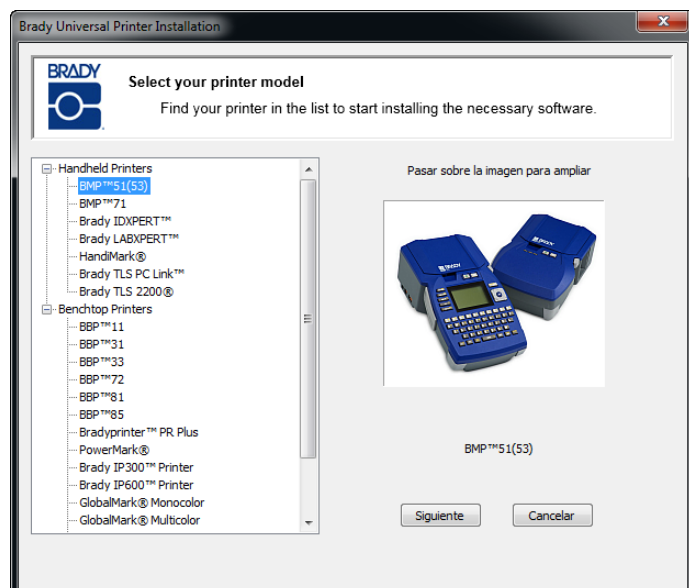
Utilice este proceso instalación si desea enviar trabajos de impresión a la impresora desde un PC usando sólo un cable USB.

Para instalar el controlador de su impresora Brady y la Utilidad de configuración de la tarjeta de red Brady, siga estos pasos.

1. Asegúrese de que la impresora y el PC **NO** están conectados con un cable USB.
2. Inserte el CD de controladores de la impresora Brady en la unidad de CD del ordenador.

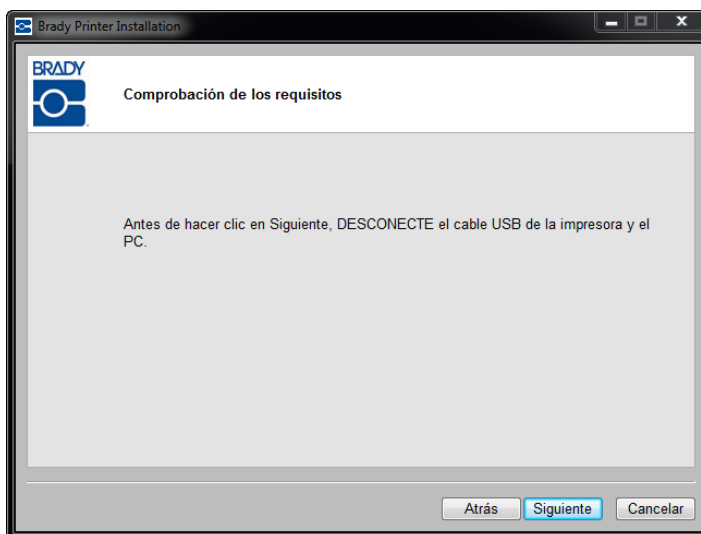
El asistente para la instalación se inicia automáticamente.

3. Encienda la impresora.
4. Haga clic en el modelo de impresora que está instalando.
5. Haga clic en Siguiente.



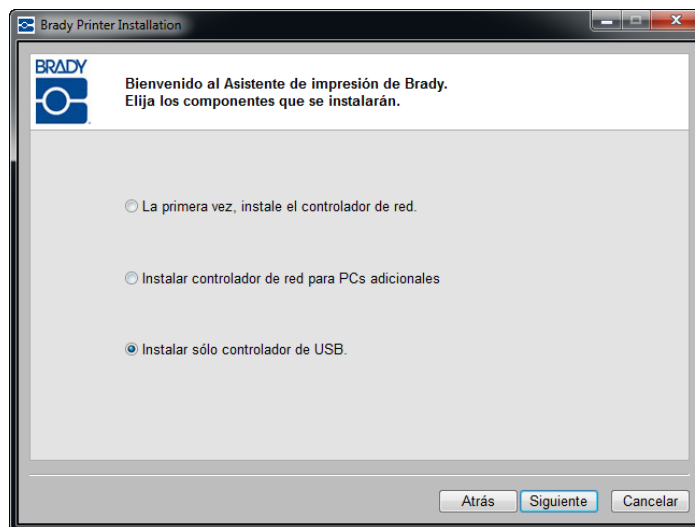
6. Si la impresora y el PC aún están conectados con un cable USB, **DESCONÉCTELO** ahora.

7. Haga clic en Siguiente.

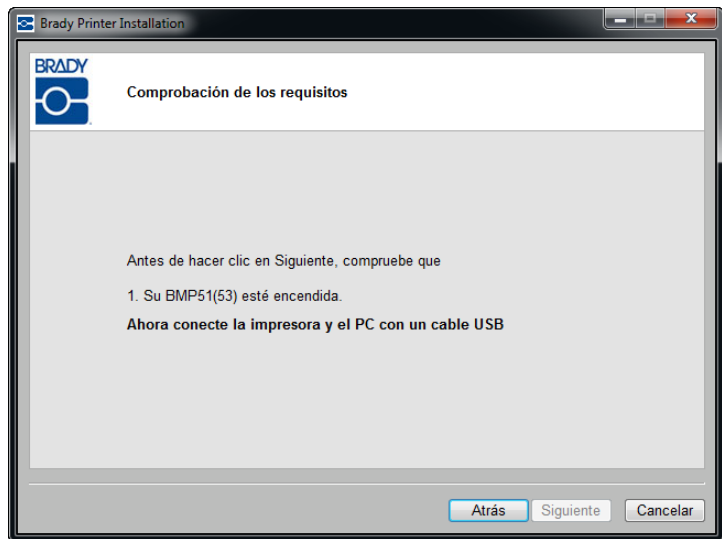


8. Haga clic en el botón de selección *Instalar sólo controlador de USB*.

9. Haga clic en Siguiente.



10. Conecte la impresora al PC con un cable USB.



Si aparece el *Asistente para hardware nuevo encontrado*, continúe con el Paso 11, de lo contrario proceda con el Paso 15 en [página 45](#).

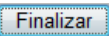
11. Haga clic en el botón de selección *Sí, ahora y cada vez que conecte un dispositivo* y haga clic en Siguiente.



12. Haga clic en *Instalar automáticamente el software (recomendado)* y después en Siguiente.



La instalación continúa.

13. Cuando ya terminado, haga clic en Finalizar  para cerrar el asistente.

14. Haga clic en Siguiente.



15. Una vez instalados correctamente el controlador USB y la Utilidad de configuración de la tarjeta de red Brady, haga clic en Finalizar.



Instalación por primera vez para impresión Ad hoc

Use este proceso de instalación para conectar el PC a la impresora de forma inalámbrica, sin un enrutador. Se denomina una conexión punto a punto. La conexión inalámbrica permite enviar trabajos de impresión a la impresora desde fuera de la oficina.

La configuración de la impresión ad hoc incluye los siguientes tres pasos:

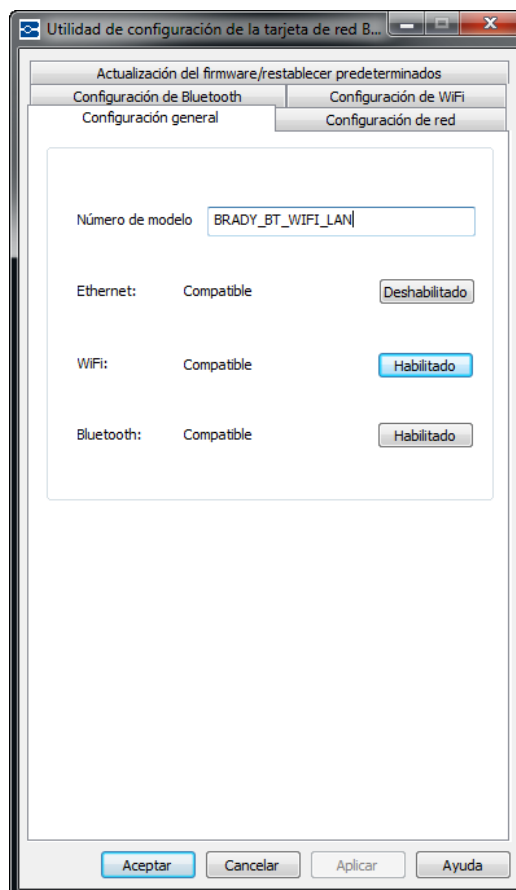
1. Instalación del controlador de USB.
2. Establecer una conexión Ad hoc.
3. Instalación del controlador de red.

Instalación del controlador de USB

Siga los pasos 1 a 10 (que empiezan en la [página 41](#)) para la instalación de USB.

Establecer una conexión Ad hoc

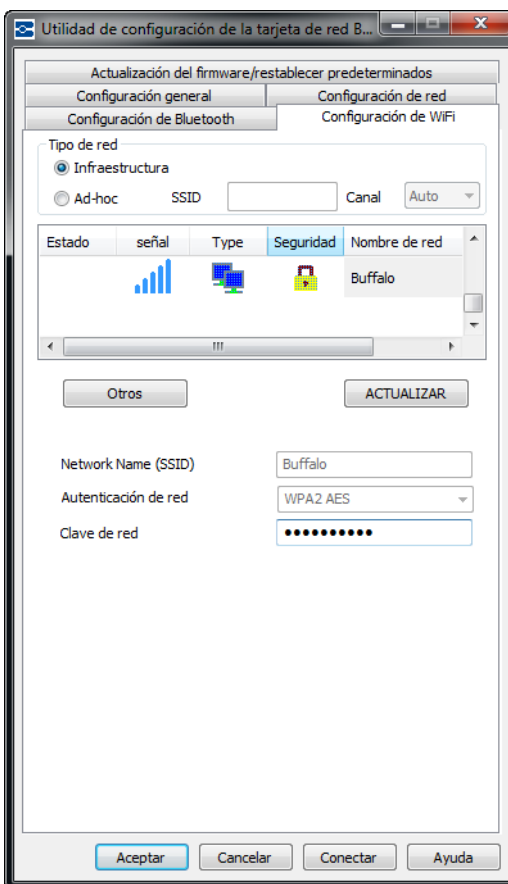
1. Abra la Utilidad de configuración de la tarjeta de red Brady eligiendo **Inicio>Programas>Brady>Tarjeta de red Brady>Utilidad de configuración de la tarjeta de red Brady**.
2. Haga clic en la ficha Configuración general (si aún no se muestra).
3. Compruebe que Inalámbrica está habilitada. Si está deshabilitada, haga clic en Habilitar para habilitar la configuración.



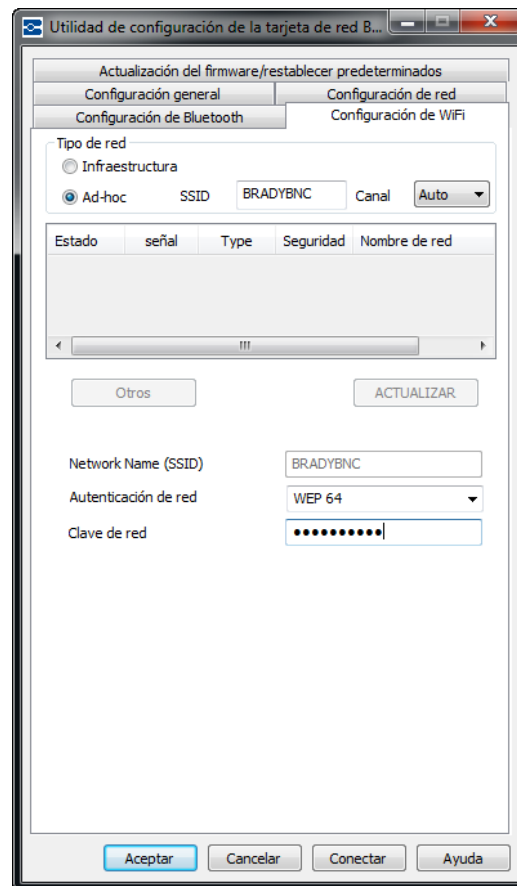
48 | Instalación de la tarjeta de red Brady

Instalación por primera vez para impresión Ad hoc

La aplicación realiza una búsqueda de WiFi y muestra una lista de redes disponibles.

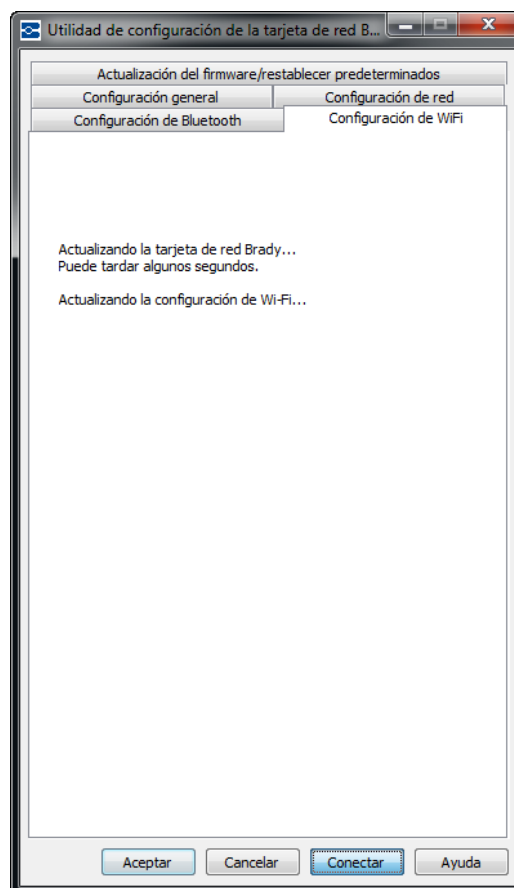


4. Haga clic en el botón de selección *Ad-hoc* e introduzca el SSID (nombre de red) y canal.



5. Haga clic en Conectar.

La configuración de WiFi se actualiza.



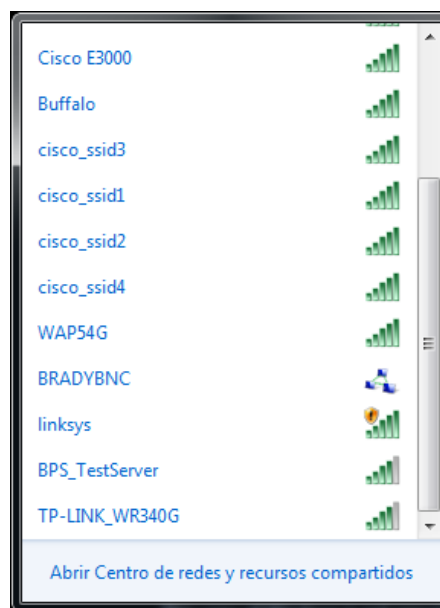
Para ver las redes inalámbricas detectadas por el PC:

6. Elija **Inicio>Conectar a>Conexiones de red inalámbricas>Ver redes inalámbricas**.

7. Haga clic en el SSID (nombre de red) antes introducido. El icono indica que se trata de una conexión punto a punto.

8. Haga clic en Conectar.

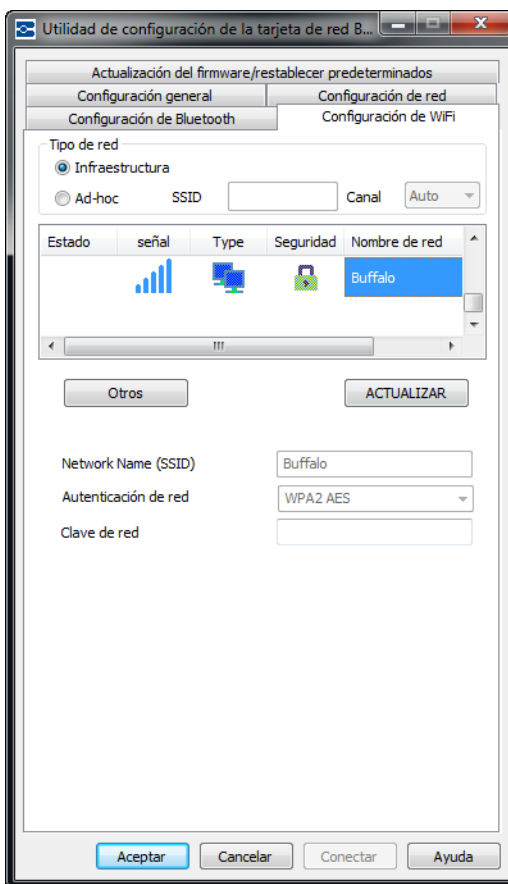
Conexión Ad hoc establecida.



Nota: el instalador detecta automáticamente si la red que ha seleccionado es una red personal o una red de empresa.

Red personal

Si la red inalámbrica que ha seleccionado de la lista es una red personal, se mostrarán automáticamente el nombre de red (SSID) y la autenticación de red.



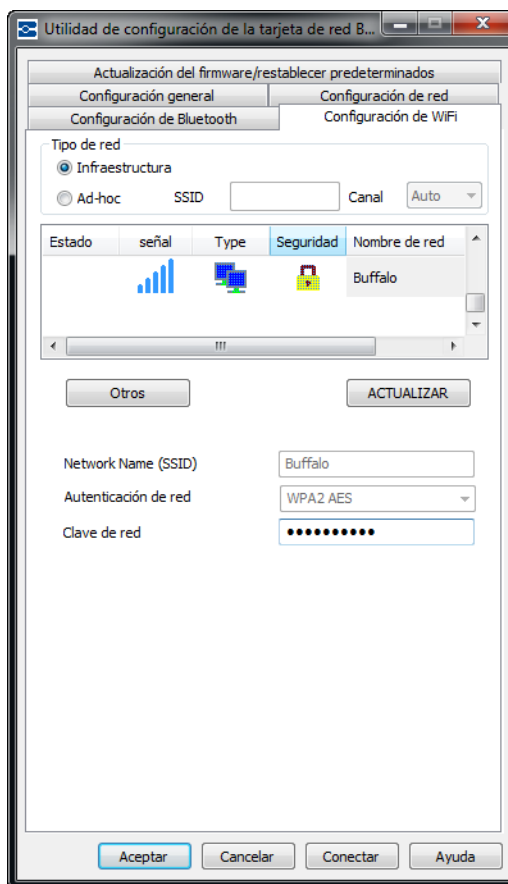
52 | Instalación de la tarjeta de red Brady

Instalación por primera vez para impresión Ad hoc

9. Escriba la clave de paso de la red seleccionada.

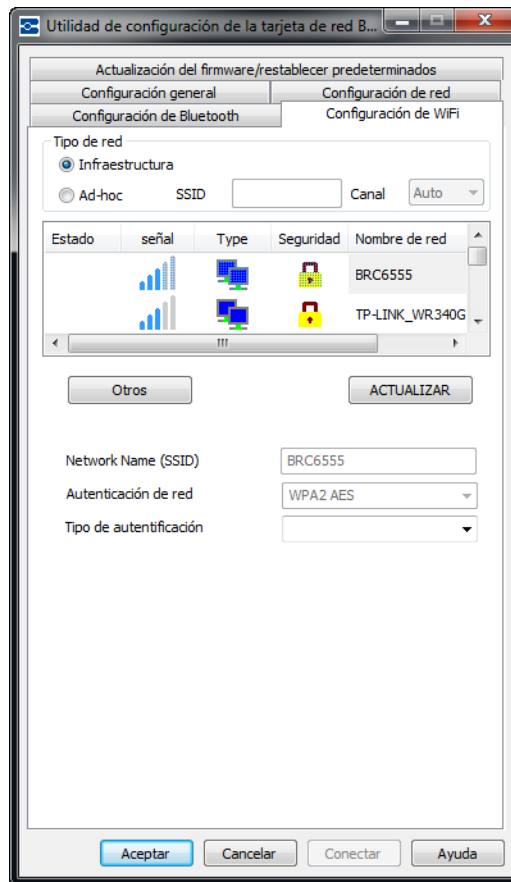
Si no conoce la contraseña o el tipo de seguridad, consulte con el administrador de la red.

10. Haga clic en Conectar.



Red de empresa

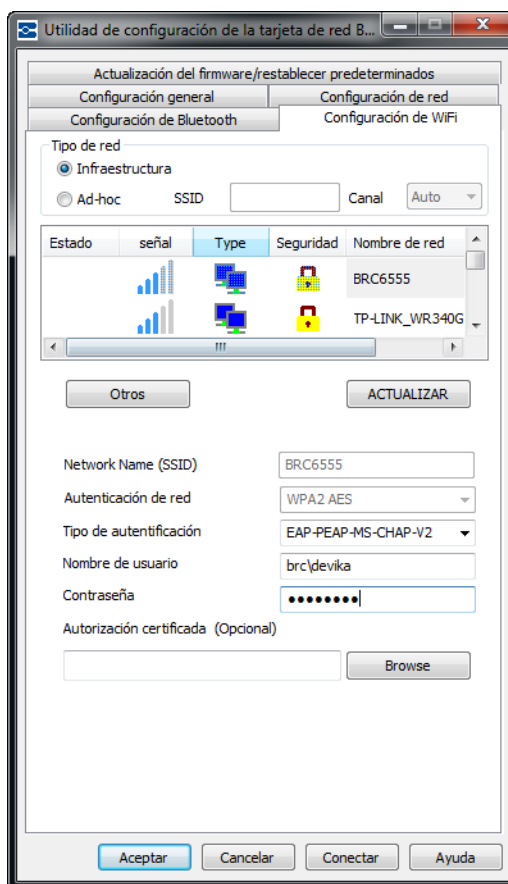
Si la red inalámbrica que ha seleccionado de la lista es una red de empresa, deberá proporcionar el tipo de autenticación, el nombre de usuario y la contraseña.



11. Haga clic en la flecha hacia abajo y seleccione el *Tipo de autenticación*. (Si no conoce el tipo de autenticación, diríjase a su administrador de red.)
12. Introduzca el nombre de usuario y contraseña, en caso necesario. Diríjase a su administrador de red para determinar si su nombre de usuario ya le ha sido asignado.

Nota: dependiendo del tipo de autenticación seleccionado, podría requerirse o no un nombre de usuario, contraseña y certificados. Consulte la tabla de autenticación en [página 14](#) para obtener más información.

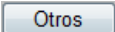
13. Cuando esté listo, haga clic en Conectar.

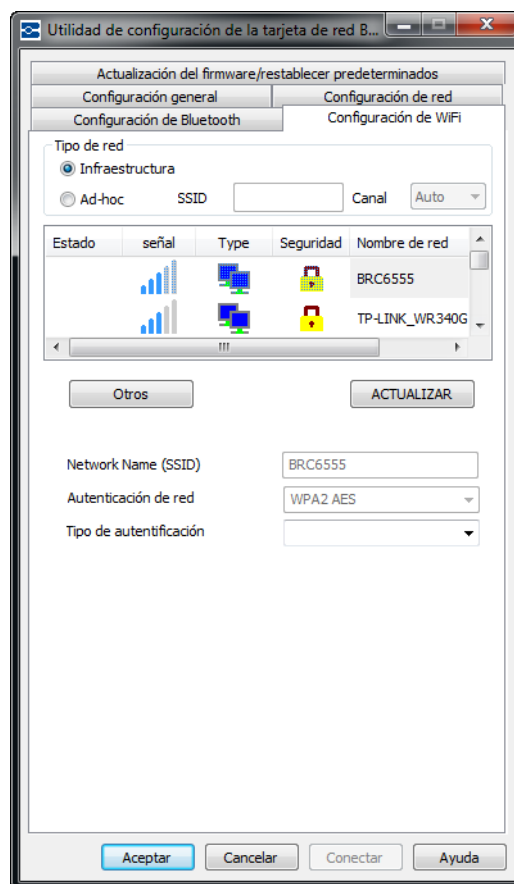


Definición de Otras redes

Si no ve la red en la lista, puede elegir Otros para especificar manualmente una red. Deberá conocer el nombre de la red (SSID), la seguridad aplicada y una contraseña, si fuera necesaria. Puede solicitar esta información de su administrador de red.

Para nombrar otra red:

1. En la pantalla Ajustes WiFi, haga clic en el botón Otra .

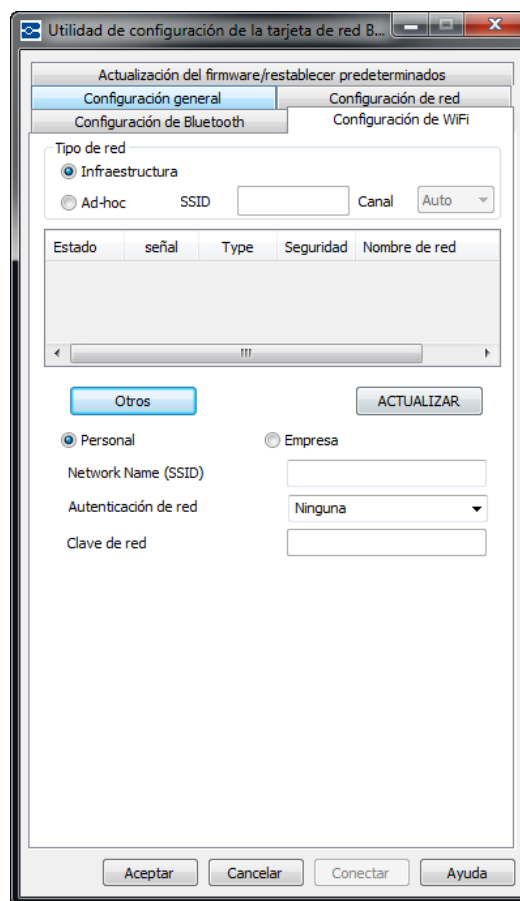


56 | Instalación de la tarjeta de red Brady

Instalación por primera vez para impresión Ad hoc

Una red personal habitualmente conecta su PC con dispositivos periféricos, como una impresora. Una red de empresa interconecta varias instalaciones de la compañía, como instalaciones de producción, sedes, oficinas remotas y almacenes para compartir recursos informáticos.

2. En la pantalla de red *Otra*, haga clic en el botón de selección, red personal o red de empresa que mejor describa su red.



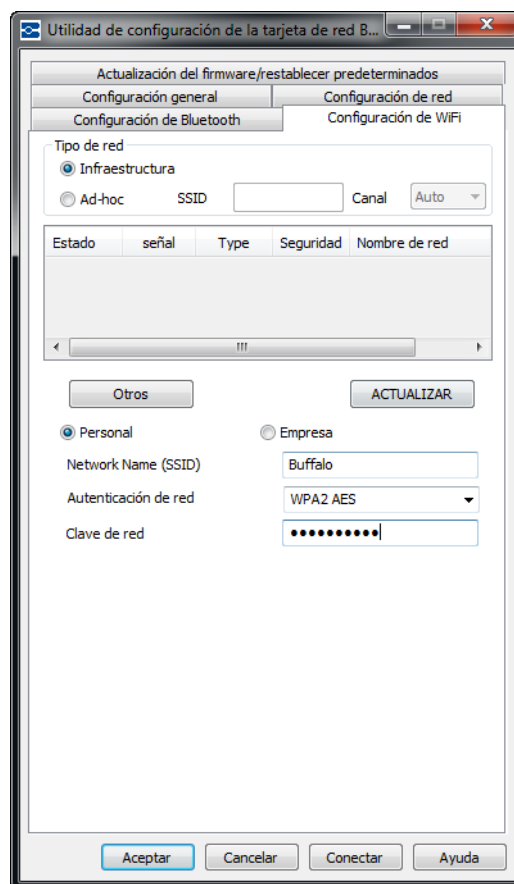
Red personal

3. Al hacer clic en red personal, introduzca el nombre de red (SSID).
4. En el campo de seguridad, haga clic en la flecha hacia abajo y seleccione el tipo de seguridad.

Dependiendo de la seguridad seleccionada, tendrá o no que proporcionar una contraseña. Consulte las tablas de tipos y métodos de autenticación en [página 14](#) para obtener más información.

Nota: no tendrá que suministrar un tipo de autenticación para redes personales.

5. Proceda con el Paso 10 en [página 58](#).

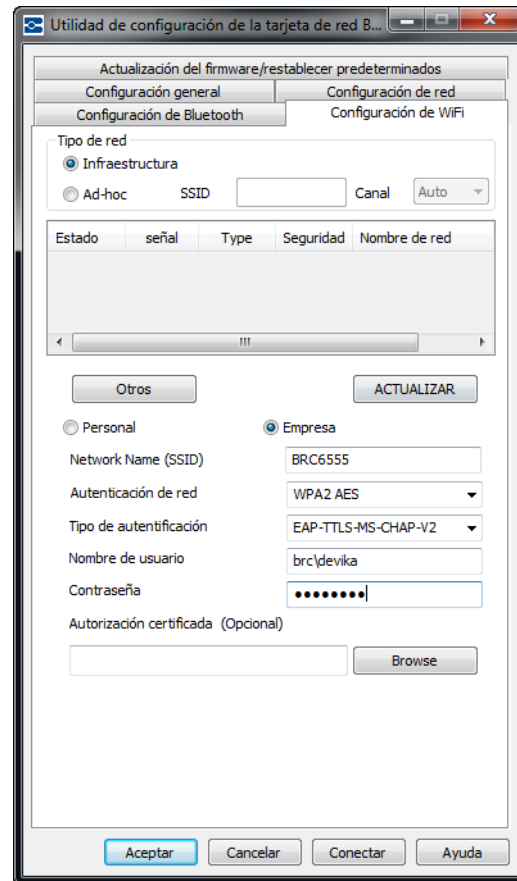


Red de empresa

Al hacer clic en red de empresa:

6. Introduzca el nombre de red (SSID).
7. En el campo de seguridad, haga clic en la flecha hacia abajo y seleccione el tipo de seguridad.
8. Haga clic en la flecha hacia abajo y seleccione el *Tipo de autenticación*. (Si no conoce el tipo de autenticación, diríjase a su administrador de red.)
9. Introduzca el nombre de usuario y contraseña, en caso necesario. Diríjase a su administrador de red para determinar si su nombre de usuario ya le ha sido asignado.

Nota: dependiendo del tipo de autenticación seleccionado, podría requerirse o no un nombre de usuario, contraseña y certificados. Consulte la tabla de autenticación en [página 14](#) para obtener más información.



10. Cuando esté listo, haga clic en Conectar.

Instalación del controlador de red

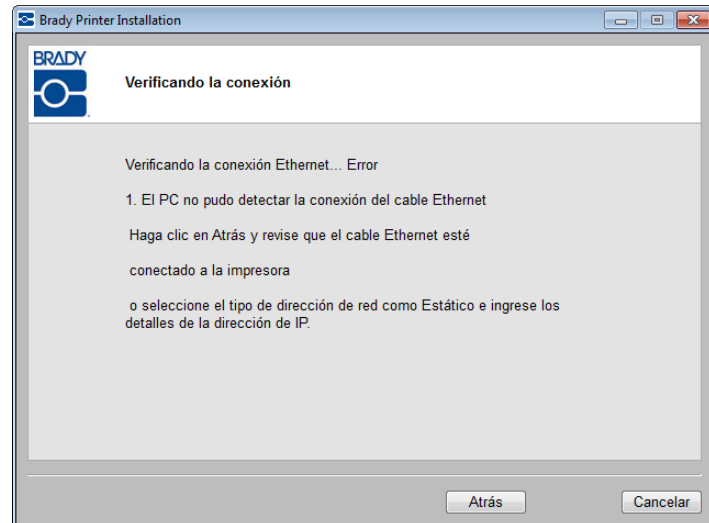
Para instalar controladores de red, consulte los pasos 1 a 13 de Instalación para PCs adicionales (a partir de la [página 34](#)).

Solución de problemas

Error en la conexión Ethernet

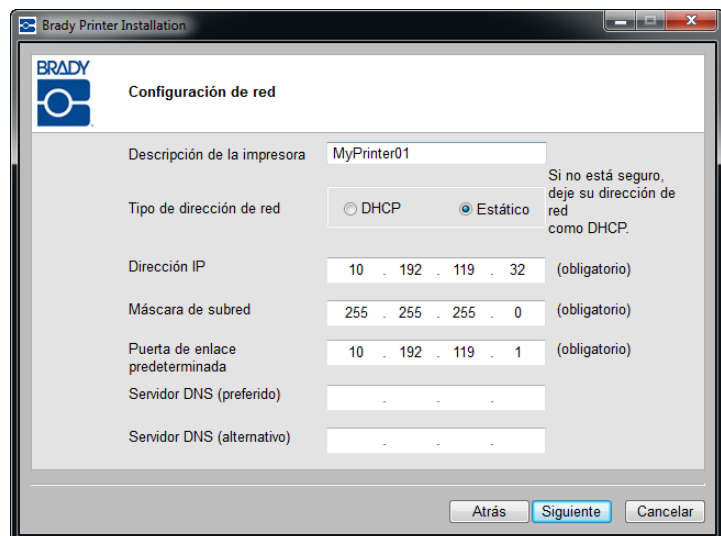
La conexión Ethernet puede fallar por dos motivos:

1. El cable Ethernet no está conectado a la impresora.
2. El PC y la impresora no están en la misma red.



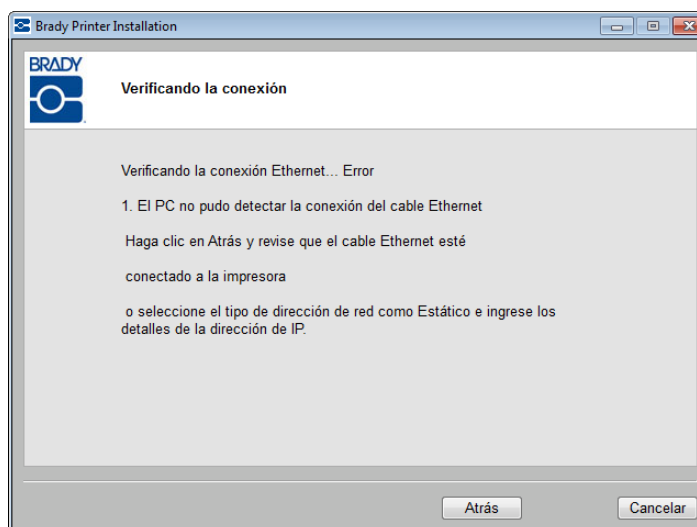
Cable Ethernet no conectado

1. Haga clic en Atrás.
2. Asegúrese de que el cable Ethernet está conectado a la impresora.
3. Haga clic en Siguiente.



El PC y la impresora no están en la misma red

1. Haga clic en Atrás.

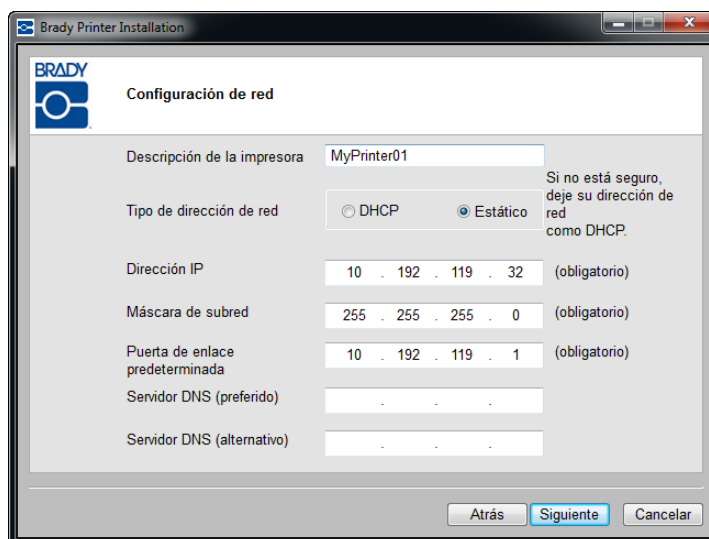


2. Asegúrese de que la impresora y el PC estén conectados a la misma red. (Consulte el diagrama de conexión en la [página 28](#)).

O bien

Haga clic en Tipo de dirección de red: Estática e introduzca los datos de la dirección IP.

Nota: si se ha seleccionado la misma red y la conexión aún falla, un firewall está bloqueando la conexión. En ese caso, póngase en contacto con el administrador de la red.



Error en la conexión WiFi

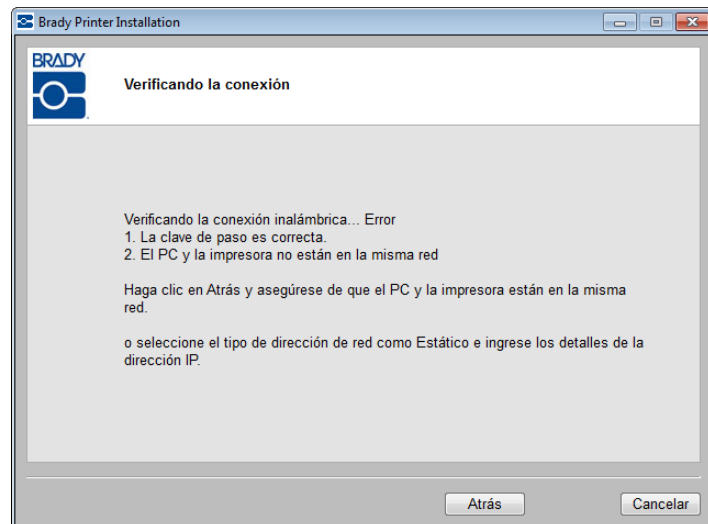
La conexión WiFi puede fallar por dos motivos:

1. El PC y la impresora no están en la misma red.
2. Se ha introducido un código de seguridad o una clave de paso incorrectos.

El PC y la impresora no están en la misma red

Red personal

1. Haga clic en Atrás.

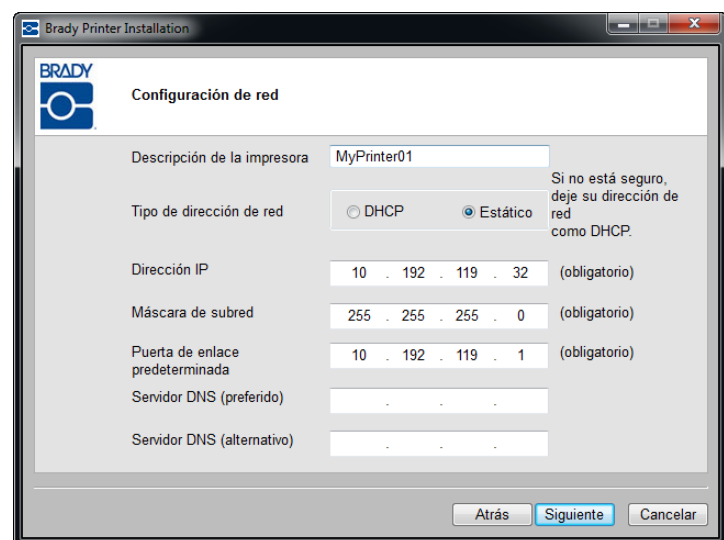


2. Asegúrese de que la impresora y el PC estén conectados a la misma red. (Consulte el diagrama de conexión en la [página 28](#)).

O bien

Haga clic en Tipo de dirección de red: Estática e introduzca los datos de la dirección IP.

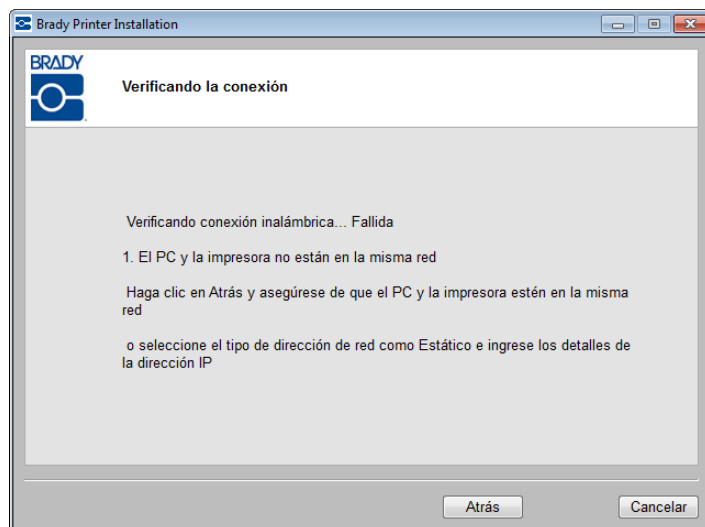
Nota: si se ha seleccionado la misma red y la conexión aún falla, un firewall está bloqueando la conexión. En ese caso, póngase en contacto con el administrador de la red.



3. Cuando esté listo, haga clic en Siguiente.

Red de empresa:

1. Haga clic en Atrás.

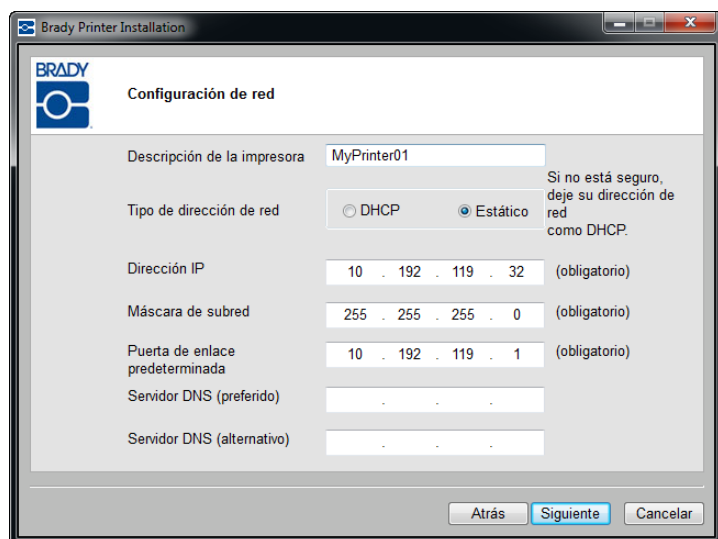


2. Asegúrese de que la impresora y el PC se encuentren en la misma red.

O bien

Haga clic en Tipo de dirección de red: Estática e introduzca los datos de la dirección IP.

3. Cuando esté listo, haga clic en Siguiente.

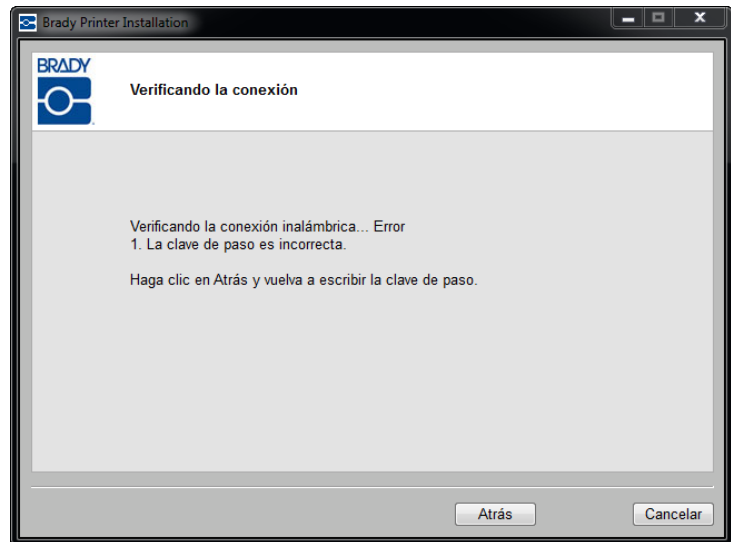


Clave de paso o modo de seguridad incorrectos

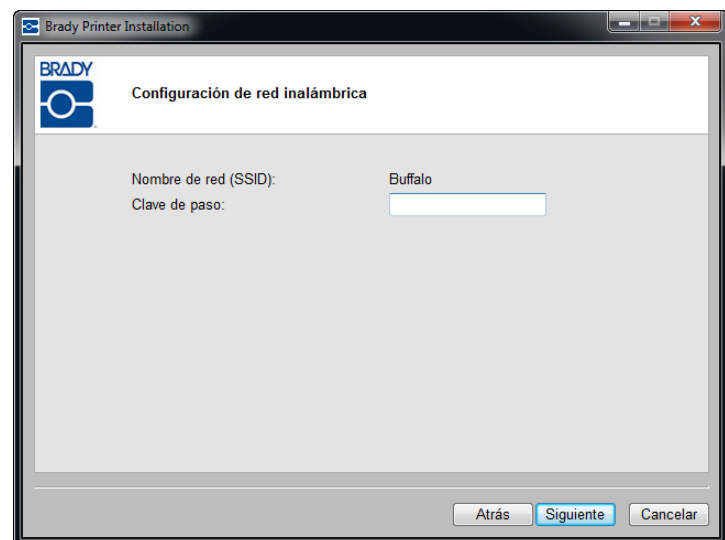
Red personal

Si la conexión a una red personal falla, probablemente la contraseña será incorrecta. Para corregir la contraseña:

1. Haga clic en Atrás.

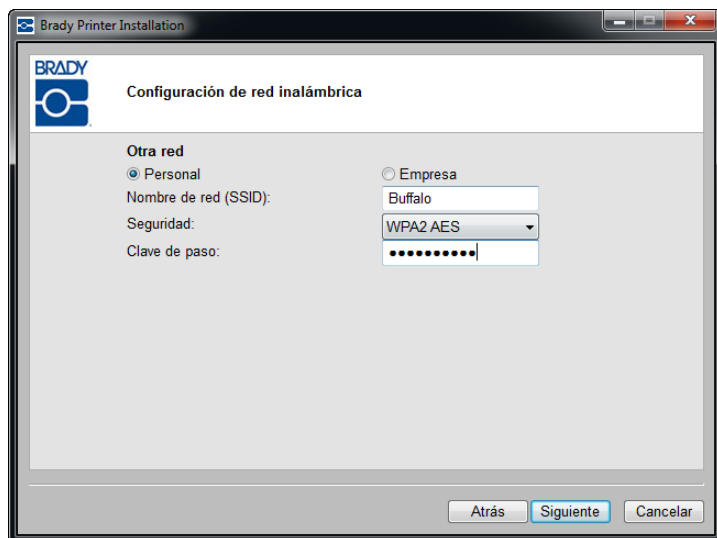


2. Introduzca la clave de paso correcta.



Nota: si ha seleccionado 'Otros' en la lista de redes, también necesitará introducir el modo de seguridad.

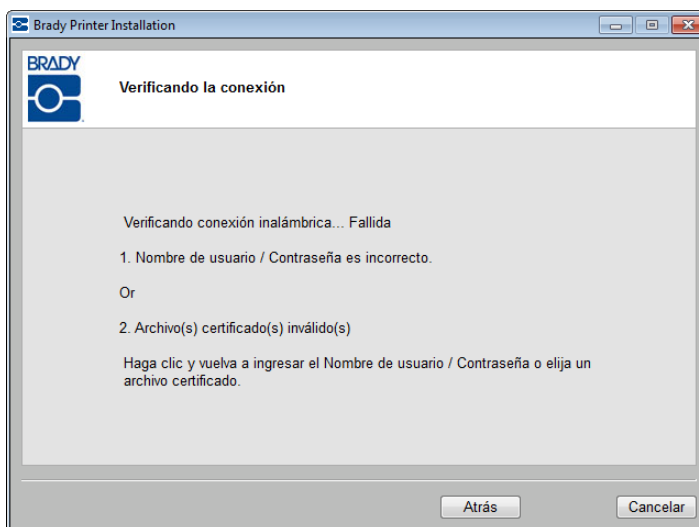
3. Haga clic en Siguiente para continuar la instalación.



Red de empresa

Si la conexión a una red de empresa falla, el nombre de usuario, la contraseña o los certificados podrían ser incorrectos. Para corregir la contraseña y/o los certificados:

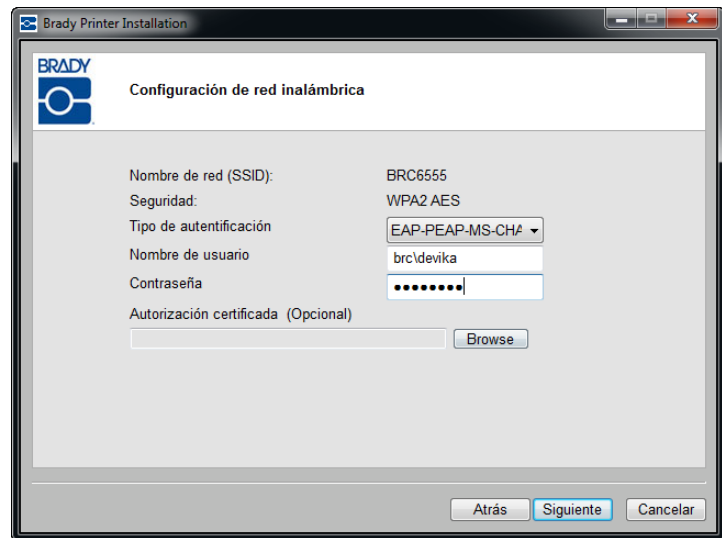
1. Haga clic en Atrás.



2. Vuelva a introducir el nombre de usuario o la contraseña correctas.

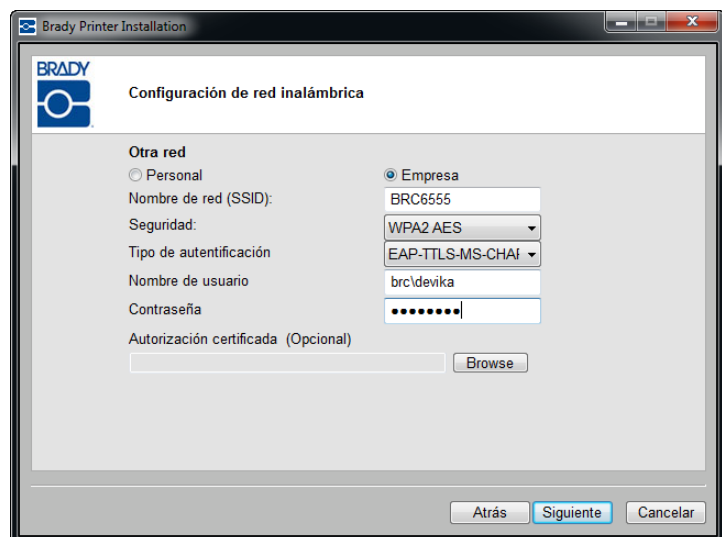
O, dependiendo del tipo de autenticación seleccionada, si se requieren certificados:

3. Vuelva a introducir las autorizaciones de certificados.
4. Haga clic en Siguiente para continuar la instalación.



Nota: si ha seleccionado ‘Otros’ en la lista de redes, también necesitará introducir el modo de seguridad.

5. Haga clic en la flecha hacia abajo en el campo de Seguridad y seleccione la Seguridad correcta.
6. Haga clic en Siguiente para continuar la instalación.



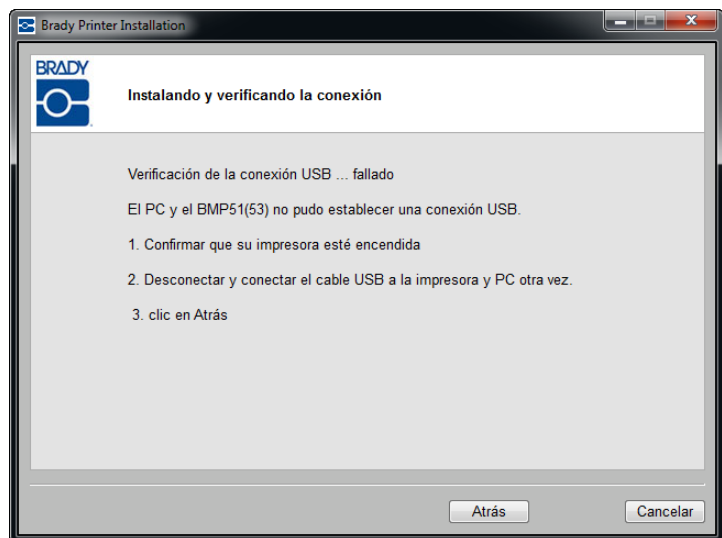
Error en la conexión USB

La conexión USB puede fallar por dos motivos:

- La impresora está apagada.
- El cable USB no está conectado.

Si la conexión ha fallado:

1. Haga clic en Atrás.
2. Encienda la impresora y conecte el cable USB.
3. Haga clic en Siguiente para volver a intentarlo.



Utilidad de configuración de la tarjeta de red Brady

Una vez instalados los controladores de red, también se instala una utilidad de configuración, que se coloca automáticamente en Programas, al pulsar el botón Inicio de Windows. Use la utilidad de configuración para ajustar o cambiar la configuración instalada inicialmente.

Para acceder a la utilidad:

1. Elija **Inicio>Programas>Brady>Tarjeta de red Brady>Utilidad de configuración de la tarjeta de red Brady**.

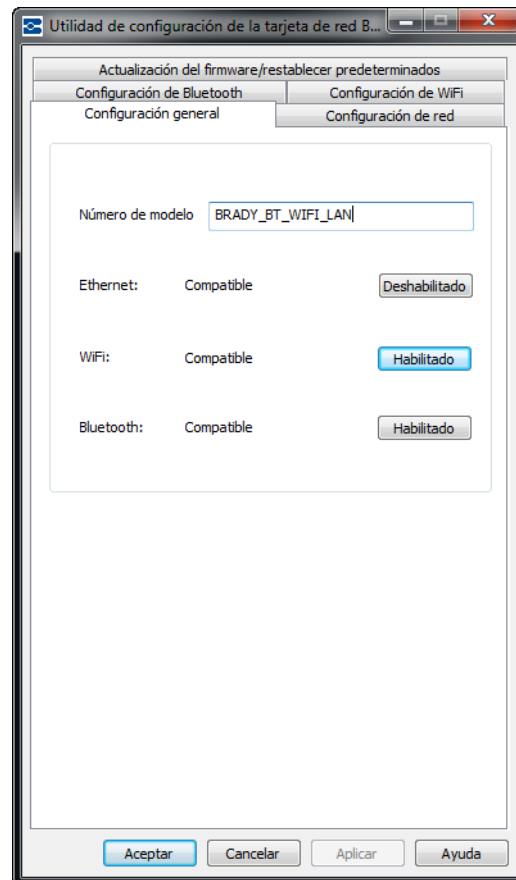
Aparece un cuadro de diálogo con varias fichas.

Configuración general

En la ficha General Settings se identifica el número de modelo de la tarjeta de red Brady y se muestran las conexiones anteriormente definidas.

Para cambiar el estado de cada configuración admitida:

1. Haga clic en el botón Enabled/Disabled para cambiar el estado actual de la conexión.
2. Haga clic en OK para aceptar los cambios y salir del cuadro de diálogo.



Configuración de red

En la ficha Network Settings se muestra en nombre exclusivo asignado a la impresora y el tipo de dirección que usa.

La configuración recomendada es DHCP.

Si elige Estático, son necesarios los campos Dirección IP, Máscara de subred y Puerta de enlace predeterminada.

The screenshot shows the 'Utilidad de configuración de la tarjeta de red B...' window. The 'Configuración de red' tab is active. It contains the following fields and options:

- Actualización del firmware/restablecer predeterminados** (header)
- Configuración de Bluetooth** and **Configuración de WiFi** (sub-tabs)
- Configuración general** and **Configuración de red** (main tabs)
- Descripción de la impresora**: MyPrinter01
- Tipo de dirección de red**: ☒ DHCP, ☐ Static
- Dirección IP ***: 10 . 192 . 119 . 132
- Máscara de subred ***: 255 . 255 . 255 . 0
- Puerta de enlace predeterminada ***: 10 . 192 . 119 . 1
- Servidor DNS (preferido)**: 172 . 22 . 40 . 180
- Servidor DNS (alternativo)**: 172 . 22 . 10 . 180
- * = Campos obligatorios** (note)
- Buttons**: Aceptar, Cancelar, Aplicar, Ayuda

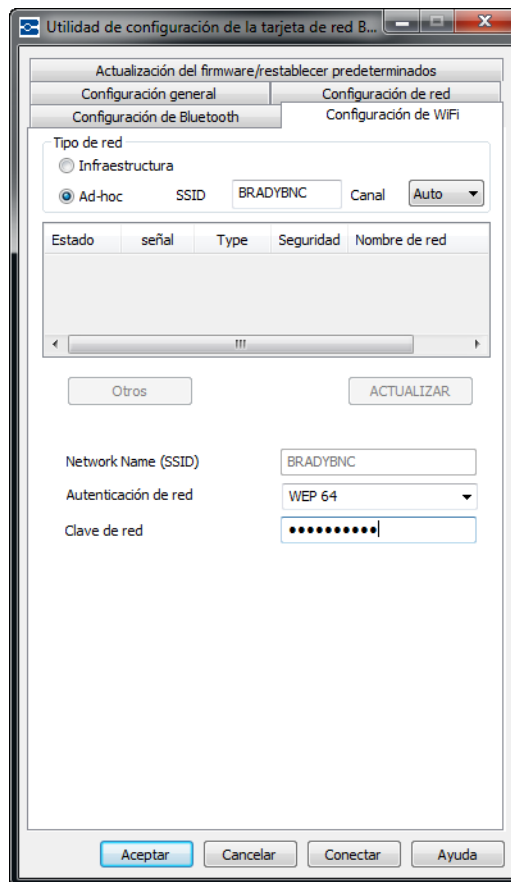
Configuración de WiFi

En la ficha WiFi Settings se muestra:

- El tipo de red: - Infraestructura o Ad hoc.
- La red conectada actualmente.
- La configuración de seguridad de la red conectada actualmente.

Infraestructure se selecciona cuando la impresora está conectada al PC mediante un enrutador. Es el caso más habitual.

1. Seleccione Ad-hoc si desea conectar la impresora al PC directamente, sin un enrutador.
2. Introduzca el SSID (nombre de red) y el canal.

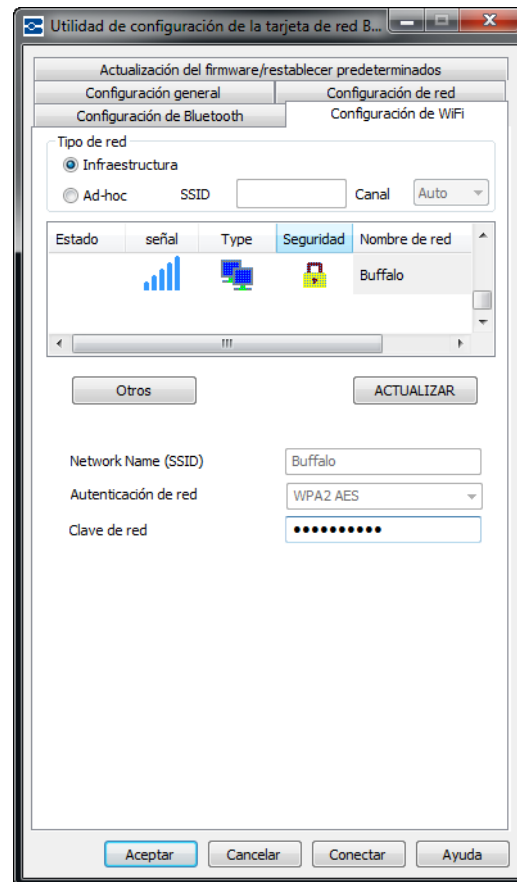


3. De la lista mostrada, haga clic en una red.

Red personal

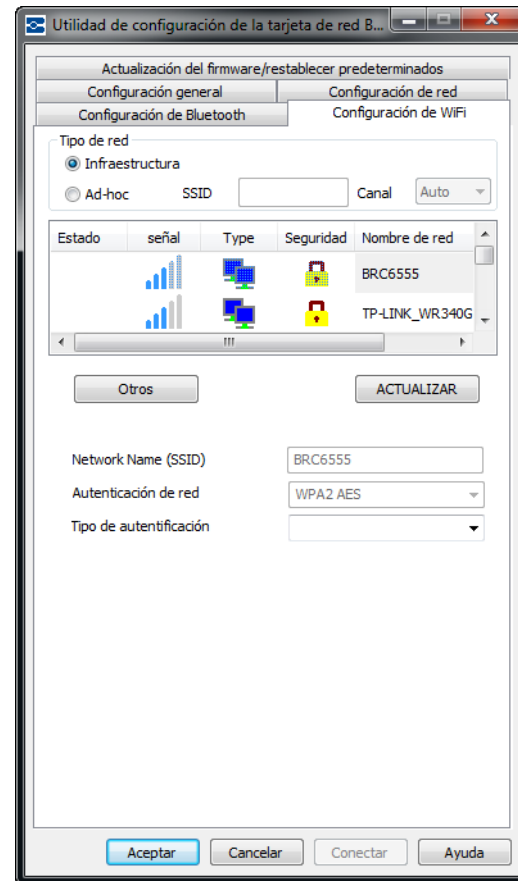
Si la red que seleccionó de la lista es una red personal, deberá introducir la contraseña de red. El campo Network Name (SSID) no puede modificarse.

4. Haga clic en el campo Clave de red e introduzca la contraseña.
5. Cuando esté listo, haga clic en Conectar.

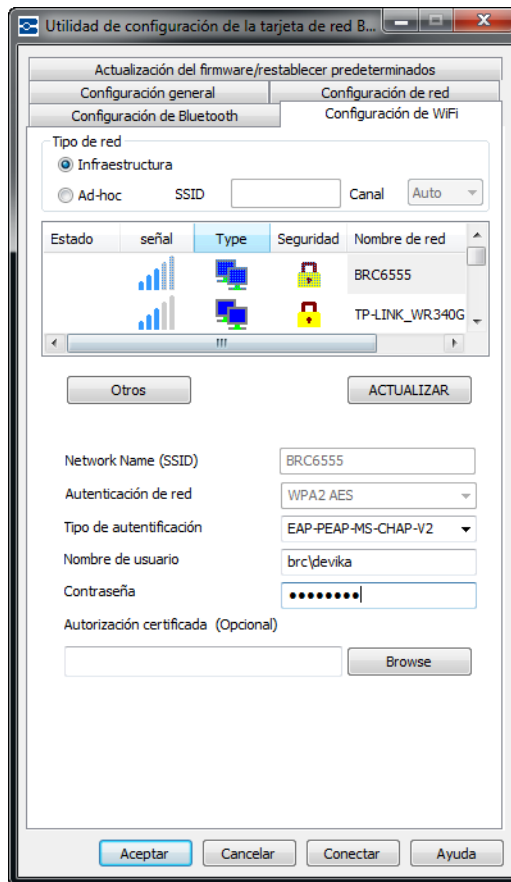


Red de empresa

Si la red que seleccionó de la lista es una red de empresa, deberá introducir el tipo de autenticación, el nombre de usuario y la contraseña. Los campos Nombre de red (SSID) y autenticación de red no son modificables.

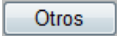


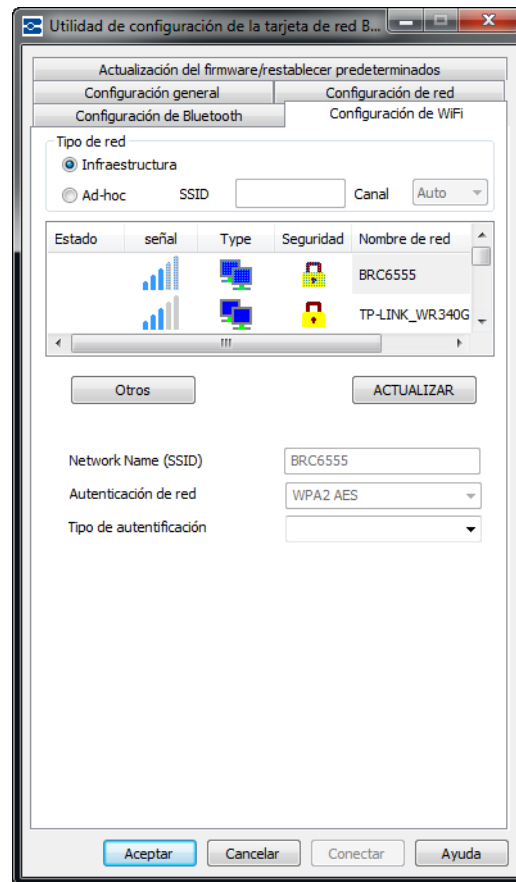
6. Haga clic en la flecha hacia abajo en el campo Tipo de autenticación y seleccione el tipo de autenticación correcto.
7. Haga clic en el campo *Nombre de usuario* e introdúzcalo.
8. Haga clic en el campo *Contraseña* e introdúzcala.
9. Cuando esté listo, haga clic en Conectar.



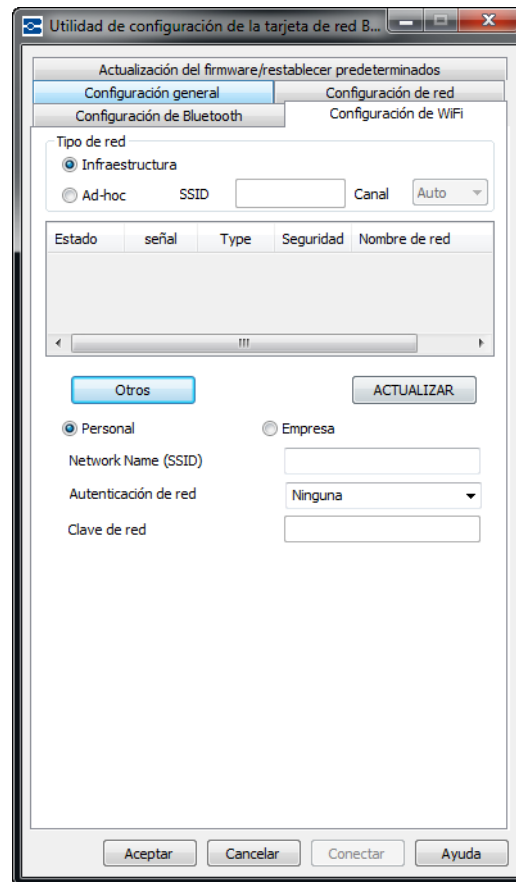
Definición de Otras redes

Para definir una red distinta que no aparezca en la lista:

- Haga clic en el botón Otro .



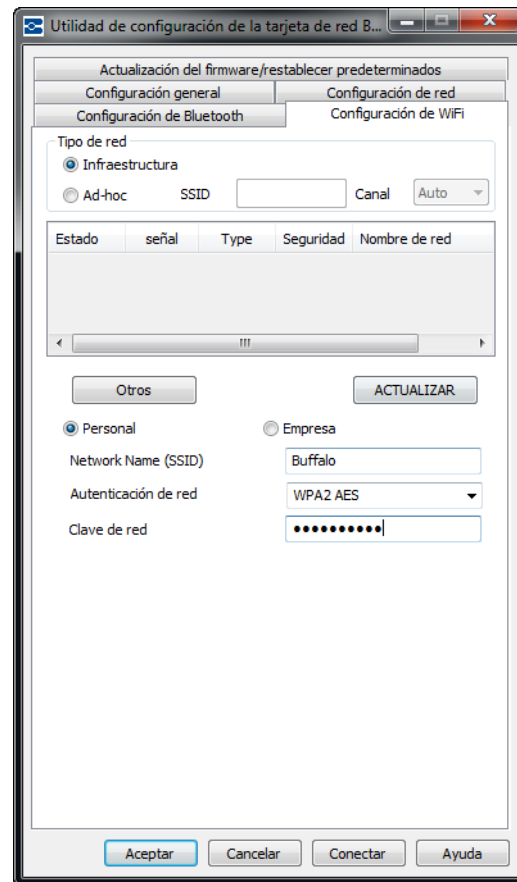
11. En la pantalla de red *Otra*, haga clic en el botón de selección, red personal o red de empresa que mejor describa su red.



Red personal

1. Al hacer clic en red personal, introduzca el nombre de red (SSID).
2. Haga clic en la flecha hacia abajo y seleccione el *Tipo de autenticación*. (Si no conoce el tipo de autenticación, diríjase a su administrador de red.)

Dependiendo de la autenticación de red seleccionada, deberá o no proporcionar una clave de red. Consulte las tablas de tipos y métodos de autenticación en [página 14](#) para obtener más información.



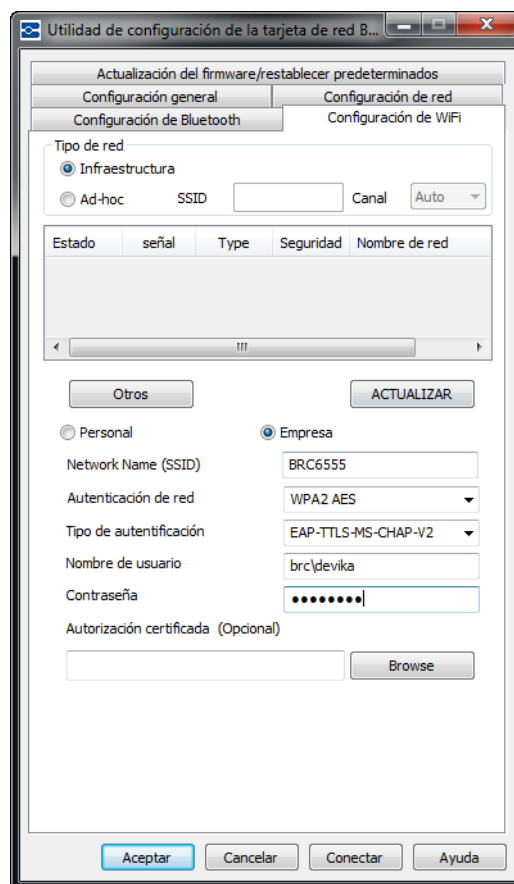
Red de empresa

Al hacer clic en red de empresa:

3. Introduzca el nombre de red (SSID).
4. En el campo *Autenticación de red*, haga clic en la flecha hacia abajo y seleccione el método de autenticación.
5. En el campo *Tipo de autenticación*, haga clic en la flecha hacia abajo y seleccione el *Tipo de autenticación*. (Si no conoce el tipo de autenticación, diríjase a su administrador de red.)
6. Introduzca el nombre de usuario y contraseña, en caso necesario. Diríjase a su administrador de red para determinar si su nombre de usuario ya le ha sido asignado.

Nota: dependiendo del tipo de autenticación seleccionado, podría requerirse o no un nombre de usuario, contraseña y certificados. Consulte la tabla de autenticación en [página 14](#) para obtener más información.

7. Haga clic en Conectar para aceptar los cambios.



Configuración de Bluetooth

En la ficha Bluetooth Settings se muestra el nombre del dispositivo genérico de la configuración Bluetooth instalado en su impresora. El nombre predeterminado es Brady. Puede cambiar el nombre predeterminado y el PIN en esta fecha.

Nombre

Para cambiar el nombre:

1. En el campo *Device Name*, resalte del nombre predeterminado e introduzca un nuevo nombre directamente sobre el texto resaltado.

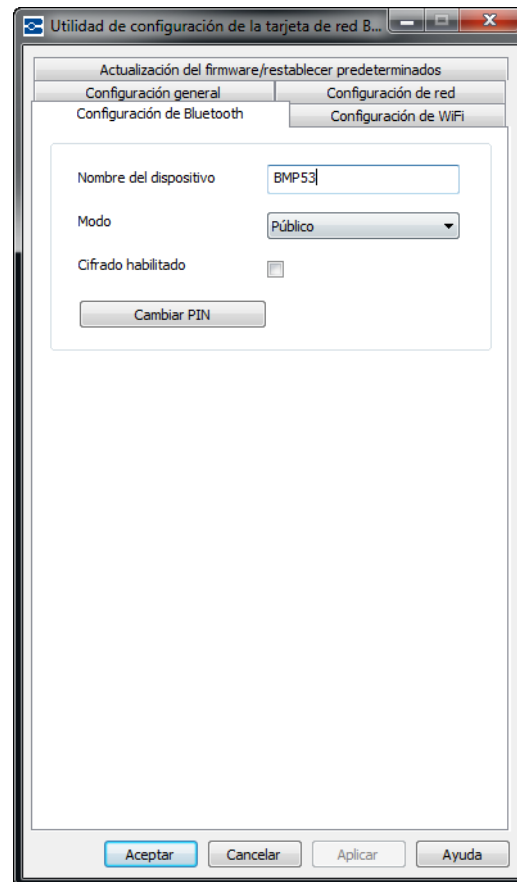
Modo

1. Haga clic en la flecha hacia abajo en el campo *Mode* para seleccionar el modo de funcionamiento de la conexión Bluetooth.

Public - Cualquier dispositivo Bluetooth puede detectar y conectar la tarjeta de red Brady.

Private - Cualquier dispositivo Bluetooth puede detectar la tarjeta de red Brady y conectarse a ella.

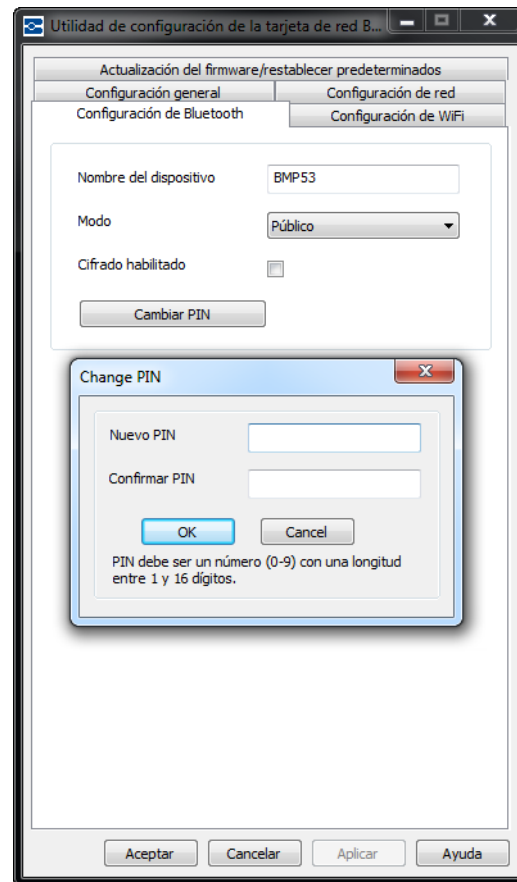
Off - No se puede detectar la tarjeta de red Brady ni conectarse a ella.



PIN

Es necesario PIN para la conexión Bluetooth. El PIN predeterminado es 0000. Si desea cambiar el PIN:

1. Haga clic en el botón Change Pin.
2. En el campo *Nuevo PIN:* , introduzca el nuevo PIN.
3. En el campo *Confirmar PIN:* , vuelva a introducir el nuevo PIN.
4. Haga clic en OK para aceptar el nuevo PIN para volver a la ficha Bluetooth Settings.
5. Haga clic en OK de nuevo para aceptar los cambios y salir del cuadro de diálogo.

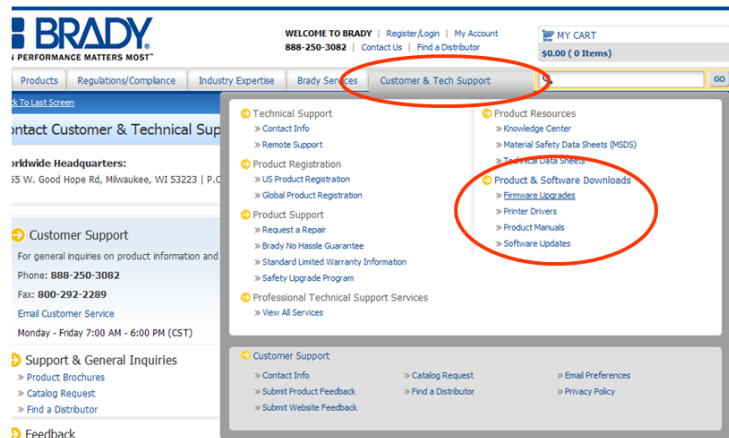


Actualización del firmware/restablecer predeterminados

Cuando hay nuevas versiones del firmware disponibles, puede actualizar la tarjeta de red Brady mediante la ficha Firmware Upgrade/Factory Reset de la utilidad de configuración.

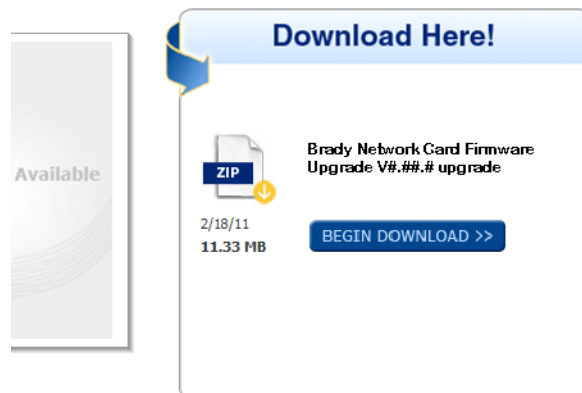
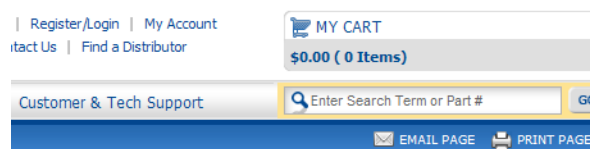
Para actualizar el firmware:

1. Acceda al sitio web de Brady en www.bradyid.com.
2. Haga clic en Customer & Tech Support.
3. En Descargas de software y productos, haga clic en la actualización del firmware de la tarjeta de red Brady.



4. En la lista que aparece, haga clic en la actualización que desee descargar y, a continuación, en el botón

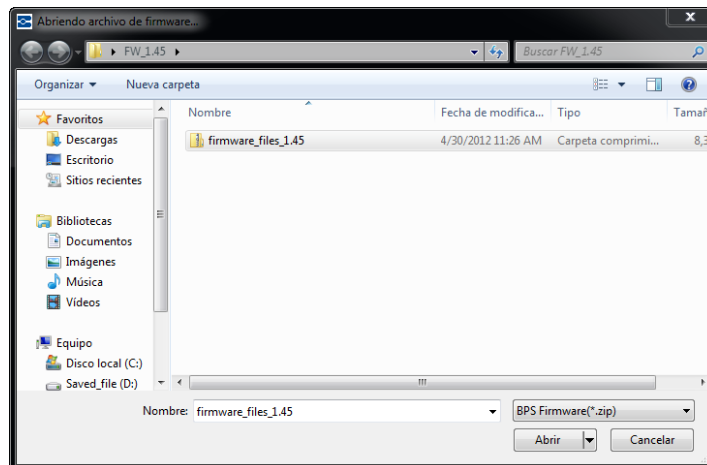
BEGIN DOWNLOAD >>



5. En la pantalla File Download, haga clic en Save.



6. Mediante los procedimientos estándar de Windows, determine el directorio en el que desea guardar la descarga.



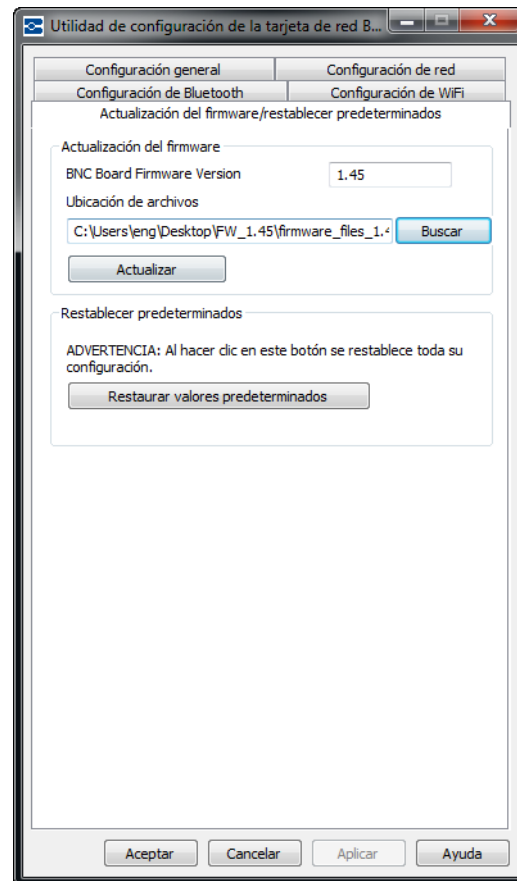
7. En la ficha Firmware Upgrade de la pantalla de la utilidad de configuración, haga clic en el botón **Buscar**.

8. Localice el directorio en el que ha guardado el archivo ZIP descargado y haga clic en Open.

9. En la ficha Firmware Upgrade/Factory Reset, haga clic en el botón **Actualizar**.

La información del programa de actualización se instala automáticamente en el sistema.

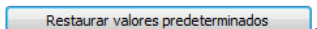
10. Haga clic en OK para aceptar los cambios y salir del cuadro de diálogo.



Restablecer predeterminados

Si desea devolver todos los valores a la configuración original de fábrica (valores predeterminados):

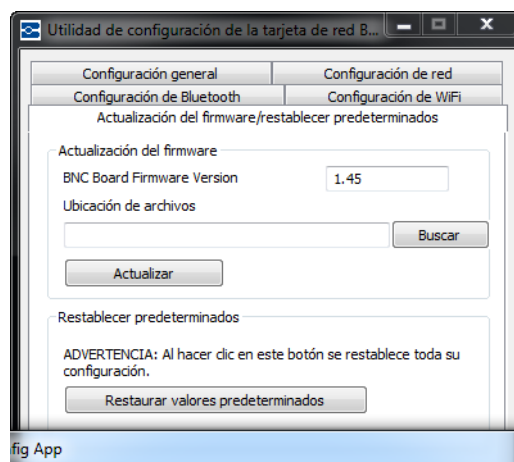
1. En la ficha Firmware Upgrade/Factory Reset de la utilidad de configuración, haga clic en el botón




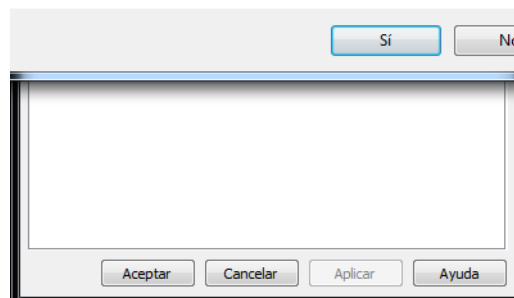
Aparece un mensaje de advertencia en el que se indica que se eliminarán todas las configuraciones anteriormente definidas.

2. Haga clic en el mensaje de advertencia si desea continuar con el restablecimiento predeterminado.
3. Haga clic en OK para aceptar los cambios y salir del cuadro de diálogo.

La configuración anterior se eliminará. Ahora puede volver a configurar las configuraciones de red y tarjeta.



 Al restablecer los valores predeterminados de fábrica se perderán todos los trabajos de impresión actuales.
¿Desea continuar?





Brady Worldwide Inc.

6555 West Good Hope Road

Milwaukee, WI 53223 EE.UU.

Teléfono: 414-358-6600 nacional EE.UU.

Fax: 414-438-6958

Sitios web

EE.UU.: www.bradyid.com

Canadá: www.bradycanada.com

México: www.bradylatinamerica.com

Asia: www.bradycorp.com

Europa: www.bradyeurope.com