



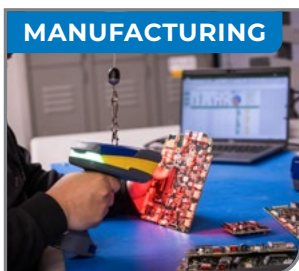
WIRELESS SCANNING DESIGNED TO MATCH YOUR WORKFLOW

# V3200

WIRELESS BARCODE READER

**Programmable to perform only the functions you need**

Simplify tasks and reduce errors



**Engineered to withstand demanding environments** with features that keep things running smoothly

Purpose-built with your job in mind:

- ▶ Stands up to industrial environments
- ▶ Survives multiple 2.4 metre drops
- ▶ Water resistant as per IP65
- ▶ JavaScript allows you to programme only the functions you need
- ▶ Decode dirty, damaged and distorted surfaces

**HARD WORKING  
AND  
HASSLE FREE**



FULL-SHIFT  
BATTERY LIFE



LARGE WIRELESS  
RANGE



EASY TO SET UP  
AND CUSTOMISE

## V3200 Kits



Article No.	Order Reference	Description
324266	BR-V3200-KIT2-EU	V3200 Industrial Wireless Bluetooth Barcode Reader and V1300 Cradle Kit EU
324267	BR-V3200-KIT2-UK	V3200 Industrial Wireless Bluetooth Barcode Reader and V1300 Cradle Kit UK
324270	BR-V3200-KIT4-EU	V3200 Wireless Barcode Reader with V1400 Cradle and Accessories Kit EU
324271	BR-V3200-KIT4-UK	V3200 Wireless Barcode Reader with V1400 Cradle and Accessories Kit UK

- The V1400's unique suite of protocols offers MORE connectivity options than any other cradle on the market: [bradyeurope.com/V1400](http://bradyeurope.com/V1400)

## V3200 Accessories



Article No.	Order Reference	Description
177234	BRA-V1200	V1200 Battery for V4500 Barcode Reader
177237	BRA-USB-RJ50-1	USB to RJ50-1 Cable for V4500 Barcode Reader
177238	BRA-USB-RJ50-28	USB to RJ50-28 Cable for V4500 Barcode Reader
177239	BRA-RS-RJ50-1	RS232 to RJ50-1 Cable for V4500 Barcode Reader
177240	BRA-RS-RJ50-28	RS232 to RJ50-28 Cable for V4500 Barcode Reader
177241	BRA-AC-9V	AC Adapter for V4500 Barcode Reader
178321	BR-V1400-KIT1	V1400 Industrial Ethernet Cradle Kit
322621	BRA-V1100-KIT-EU	This kit includes two V1200 Batteries, an AC Adapter, a EU Power Cable and a V1100 Battery charger.
322622	BRA-V1100-KIT-UK	This kit includes two V1200 Batteries, an AC Adapter, a UK Power Cable and a V1100 Battery charger.
322623	BRA-V1300-KIT-EU	This kit includes a cradle, an AC adapter, a USB cable and a EU power cord
322624	BRA-V1300-KIT-UK	This kit includes a cradle, an AC adapter, a USB cable and a UK power cord

## V3200 Specifications

Physical characteristics	
Reader Dimensions	255.00 mm (W) x 160.00 mm (H) x 113.00 mm (D)
Charging Station Dimensions	255.00 mm (W) x 75.00 mm (H) x 113.00 mm (D)
Reader Weight	1.57 kg
Charging Station Weight	1.09 kg
Ingress Protection Rating	IP65
Colour	Blue, Grey, Yellow

Performance characteristics	
Field of View	High Density Field: 30° Horizontal by 20° Vertical, Wide Field: 50° Horizontal by 33.50° Vertical
Focal Point	Approximately 100 mm
Sensor	CMOS 1.2 megapixel; (1280 x 960) grey scale
Optical Resolution	High Density Field: 960 x 640, Wide Field: 960 x 640
Pitch	± 65° (from front to back)
Skew	± 60° from plane parallel to symbol (side-to-side)
Rotational Tolerance	+/- 180°
Symbol Contrast	15% minimum reflectance difference
Illumination - Light Source	Red LEDs, 640nm
Target Beam	Single Blue targeting bar (470nm)
Ambient Light Immunity	Sunlight: Up to 9,000ft-candles/96,890 lux
Drop Test	Resistant to 114 kg crushes, Resistant to military-grade shocks (MIL-STD-810G), Resistant to 2.4 metre drops
Bluetooth Range	100 m direct line of sight in open air
Device Indicators	Lights, sound and vibration
Power Requirements	10 Watts
Number of Scans	Up to 100,000 scans per charge
Battery Type	Rechargeable Lithium-ion Battery
Battery mAh Rating	3300 mAh
ESD Protection	15 kV air, 8 kV direct
Charge Station	RS232, USB 2.0 (generic HID, HID keyboard, virtual com port)
Communication Interfaces	
Reader/Scanner Unit	Bluetooth 5 Low Energy (class II)
Communication	
Warranty	3 years scanner and cradle; 1 year battery

User environment	
Operating Temperature	-20°C - 50°C
Storage Temperature	-30°C - 65°C
Operating Humidity	5% to 95% (non-condensing)
Decode Capabilities - 1D	BC412, Codabar, Code 11, Code 128, Code 32, Code 39, Code 93, GS1 DataBar, Hong Kong 2 of 5, IATA 2 of 5, Interleaved 2 of 5, Matrix 2 of 5, MSI Plessey, NEC 2 of 5, Pharmacode, Plessey, Straight 2 of 5, Telepen, UPC / EAN / JAN, Trioptic
Decode Capability - 1D Stacked	Codablock F, Code 49, GS1 Composite (CC-A/CC-B/CC-C), MicroPDF, PDF417
Decode Capability - 2D	Aztec Code, Data Matrix, Data Matrix Rectangular Ext'n, GoCode® (proprietary--add'l license req'd), Grid Matrix, HanXin Code, Micro QR Code, QR Code, QR Model 1
Decode Capability - Postal	Australian Post, Canada Post, Intelligent Mail, Japan Post, KIX Code, Korea Post, Planet, Post-Net, UK Royal Mail, UPU ID-tags
Image Output Options	PGM, JPEG
Field Selection	High Density or Wide Field
Advanced Data Editing	JavaScript
Data Parsing	GS1, Driver's licences and ID Cards (optional licence required), HIBC
Data Structure Validation	HIBC UDI, ISO 15434, ISO 15418

Typical working ranges*								
	Code 128 (1D)			Datamatrix (2D)		QR Code (2D)		
	5 mil	20 mil	40 mil	5 mil	10 mil	20 mil	569 mil	100 mil
Minimum	15 mm	94 mm	229 mm	33 mm	5 mm	25 mm	56 mm	114 mm
Maximum	142 mm	569 mm	922 mm	105 mm	173 mm	312 mm	617 mm	1267 mm

\*Printing resolution, contrast, and ambient light dependent

