



IDENTIFICATION SOLUTIONS FOR COMMERCIAL CONSTRUCTION

BUILDING SAFETY AND COMPLIANCE CONFIDENCE IN EVERY STEP

Discover reliable products, services and software to get the job done

Identify right from **BLUEPRINT TO BUILDING**



► **Discover solutions** for effective communication, compliance and safety in commercial construction from Brady – the most trusted name in identification.



End-to-end expertise

Brady is your trusted partner throughout the construction journey, offering unparalleled expertise at every stage. Our wealth of knowledge helps ensure seamless construction project execution.



Dependability beyond measure

Brady identification solutions meet the highest standards. From initial consultation to ongoing support, we stand by our promise to deliver dependable products and services.



Extensive product portfolio

Brady boasts an unrivaled range of identification products, services and cutting-edge software. Our comprehensive portfolio ensures that you have access to the right tools for communication, compliance and safety.

How to use this catalogue

Find curated identification solutions for every phase of a construction build and finished facility. If you don't see what you need, contact our Customer Service Team at 1-800-263-6179 or TorBradyCS@BradyCorp.com.

FIND THE RIGHT SOLUTION for every job

TABLE OF CONTENTS

Best Practices & Labour Savings	4
Wire & Cable Identification	4
Pipe & Duct Marking	4
Leak, Drip & Spill Control	5
Lockout Tagout	5
Arc Flash	5

GENERAL CONTRACTOR 6

Excavation & Utilities

Outdoor Construction Site Safety	8
Construction Site Signage	9
Traffic Cones, Barricades & Tape	9
Identoline® Underground Warning Tape	9
Visitor Parking Permits	9
Hard Hat Labels	9

Underground & Utility Marking	10
Underground marking products	10

Indoor Construction Site Safety	12
Warning Signs & Labels	13
GHS Labels	13
Arc Flash Labels	13
ScaffTag® Scaffolding Tags	13
Spill Control & Countermeasures	13

Contractor Services	14
Custom Designed Product Options	14

Construction Lockout Tagout	16
Padlock options	16
Padlocks	17
Hasps	17
Lockout Tags	17
Group Lockout and Lock Boxes	17
3-in-1 Plug Lockout	17

MECHANICAL CONTRACTOR 18

HVAC & Plumbing

Pipe, Tagging & Valve Safety	20
Marker Placement	20
Pipe & Duct Markers	21
Printable Safety Tags	21
Valve Tags	21
Engraved Nameplates	21

Labelling, Signage & Lockout Tagout	22
M710 & M510 Portable Label Printers	23
S3100 Sign and Label Printer	23
B30 Series Printer Materials	23
Brady Workstation Label Software	23
Valve Lockout Devices	23

ELECTRICAL CONTRACTOR 24

Power & Electrical

Electrical Installation	26
M210 & M211 Label Printers	27
M511 Label Printer	27
M610 Label Printer	27
i5300 Industrial Label Printer	27
Brady Workstation and Express Labels Mobile	27

Wire & Cable Labelling	28
Heat Shrink Tubing	29
Wrap-Around Labels	29
Self-Laminating Labels	29
Cable Flags	29
Non-Adhesive Tags	29

Arc Flash, Lockout & Safety Tagging	30
Pre-Printed Panel Voltage and Arc Flash Labels	31
Pre-Printed Cable Markers	31
Custom Engraved Equipment Nameplates	31
HDPE Tags	31
Electrical Equipment Lockout Devices	31

FIBRE CONTRACTOR 32

Fibre Pull & Asset Connection

Cable & Rack Identification	34
M211, M511 & M611 Label Printers	35
Express Labels Mobile	35
Wire & Cable Marking Flags	35
Self-Laminating Wraparound Labels	35
Rectangles for Rack Identification	35

SAFETY & FACILITY MANAGER 36

Finished Facility

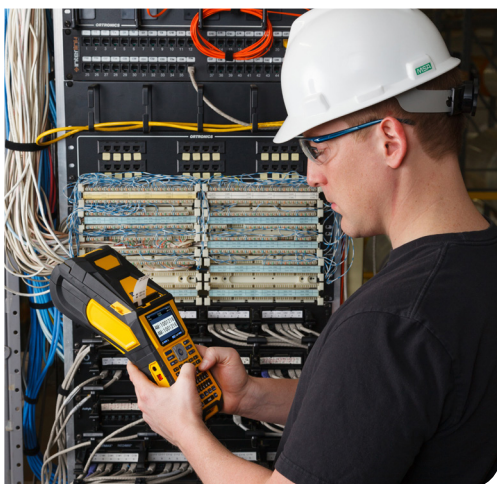
Finished Facility Safety Solutions	38
Floor Marking	39
Running Man Signs	39
Safety Signage	39
Absorbents & Spill Kits	39
Asset ID	39

On-Demand Labelling & Asset ID	40
S3700 Multicolour & Cut Sign and Label Printer	41
BradyJet J7300 Inkjet Label Printer	41
GHS Labels	41
V4500 Barcode Scanner	41
HH83 RFID Reader	41

Brady Safety Services	42
Arc Flash Services	43
Confined Space Services	43
Lockout Tagout Services	43
Link360° Safety Software	43
Link360° Process Plus Safety Software	43

Best Practices & Labour Savings

- **Boost your knowledge** on key areas, applications and regulations that affect workplace safety, and how well-executed solutions help you solve for them and save costs.



Wire & Cable Identification

Bring clarity and organization to large system installations

Wire and cable labelling is crucial for maintaining organization and safety in electrical systems. Clear labelling enables quick identification of wires, simplifies troubleshooting and ensures compliance with industry standards, enhancing efficiency and reducing the risk of errors or accidents.



Pipe & Duct Marking

Ensure workers know the flow of critical piping contents

Clear, standardized pipe and duct markings identify contents, flow direction and potential hazards. This promotes safe maintenance practices, minimizes costly errors and facilitates quick troubleshooting in complex systems. Invest in durable, standardized marking solutions to optimize workflows and ensure a secure, well-organized facility.



Leak, Drip & Spill Control

Implement proactive measures to maintain cleanliness and safety

Effective leak, drip and spill control is vital for maintaining safety and preventing damage in the workplace. Utilizing containment measures, prompt response protocols and employee training ensures quick and efficient management of leaks, drips and spills – all to minimize risks and preserve a clean and safe working environment.



Lockout Tagout

Isolate energy and secure equipment to save lives

Lockout tagout prevents unexpected energization or startup of machinery during maintenance or servicing, reducing the risk of accidents and injuries. By using compliant procedures and properly locking and tagging equipment, workers can safeguard themselves and others from hazardous energy sources and ensure compliance with safety regulations.



Arc Flash

Mitigate arc flash hazards with essential protection

Arc flash incidents stem from electrical faults or equipment failures and pose severe risks to personnel and equipment. Employing appropriate personal protective equipment, implementing safety labelling and conducting regular training significantly reduce the likelihood and severity of arc flash incidents to safeguard workers from harm.



► Explore these and other resource topics, guides and tools on BradyCanada.ca/Resources.

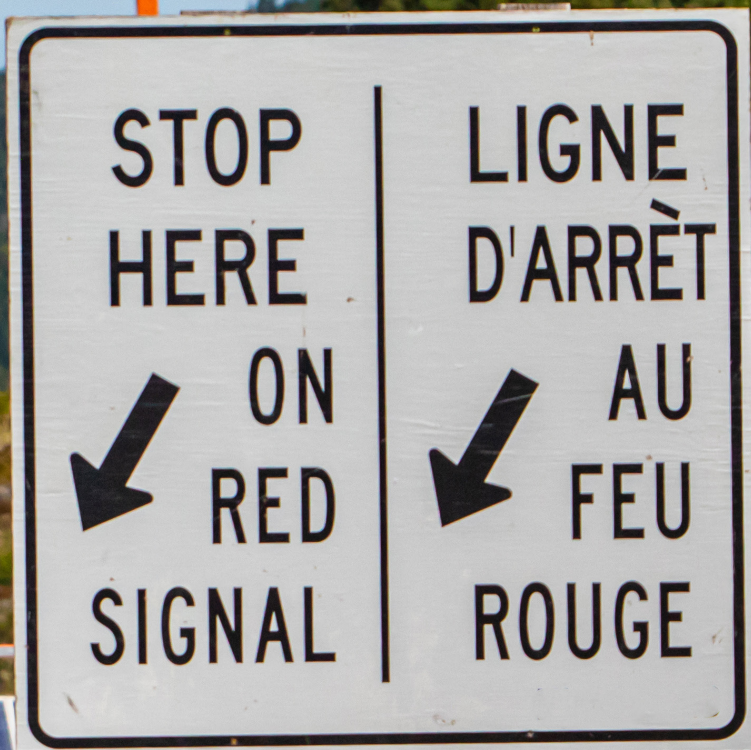
Excavation & Utilities

Ensure clear site marking for safer digging and on-time projects

We specialize in supporting general contractors during the excavation and utilities phase of construction projects. Our top-notch printers, labels, signs and tags ensure clear and durable identification, addressing safety concerns and minimizing the risk of accidents on-site. Additionally, our lockout tagout products and area marking tape contribute to a secure and organized work environment. By choosing us, you streamline the identification process, enhance project efficiency and prioritize workforce safety.

- ▶ **Underground & Utility Marking**
- ▶ **Outdoor Construction Site Safety**
- ▶ **Indoor Construction Site Safety**
- ▶ **Construction Lockout Tagout**





Proven reliability

OUTDOOR CONSTRUCTION SITE SAFETY

Enhance safety awareness, reduce accidents and ensure compliance with Federal and Provincial guidelines

Enhance construction site safety with a diverse range of solutions to facilitate clear communication, delineation, identification, asset management and improved overall site operations.



Keep electrical boxes marked



Comply with government regulations



Mark areas for different access and bring attention to hazards



Mark underground utilities fast and effectively



Add a wide variety of labelling for various surfaces



Customize identification with changing, specific data

Construction Site Safety

Reduce confusion and improve site organization



Construction Site Signage

- ▶ Printed with durable inks and clear-coat protection for fade resistance
- ▶ Withstand wind, rain, sunlight and high temperatures
- ▶ Average outdoor durability up to 8 years



Traffic Cones, Barricades & Tape

- ▶ Highly visible demarcation for many applications
- ▶ Durable for indoor/outdoor use
- ▶ Lightweight for quick setup



Identoline® Underground Warning Tape

- ▶ Warns excavation crews of buried pipes and cables before damage can occur
- ▶ Easily identified by printed legend on APWA colour-coded background
- ▶ Meets OSHA regulation covering location of underground utility lines



Visitor Parking Permits

- ▶ Window decals and plastic rearview mirror placards available
- ▶ Customizable colours and text
- ▶ Indoor/outdoor durable
- ▶ Versatile and sturdy



Hard Hat Labels

- ▶ Add labels with a wide variety of identifying information
- ▶ Designed to withstand harsh conditions and maintain high visibility



Operational clarity



UNDERGROUND & UTILITY MARKING

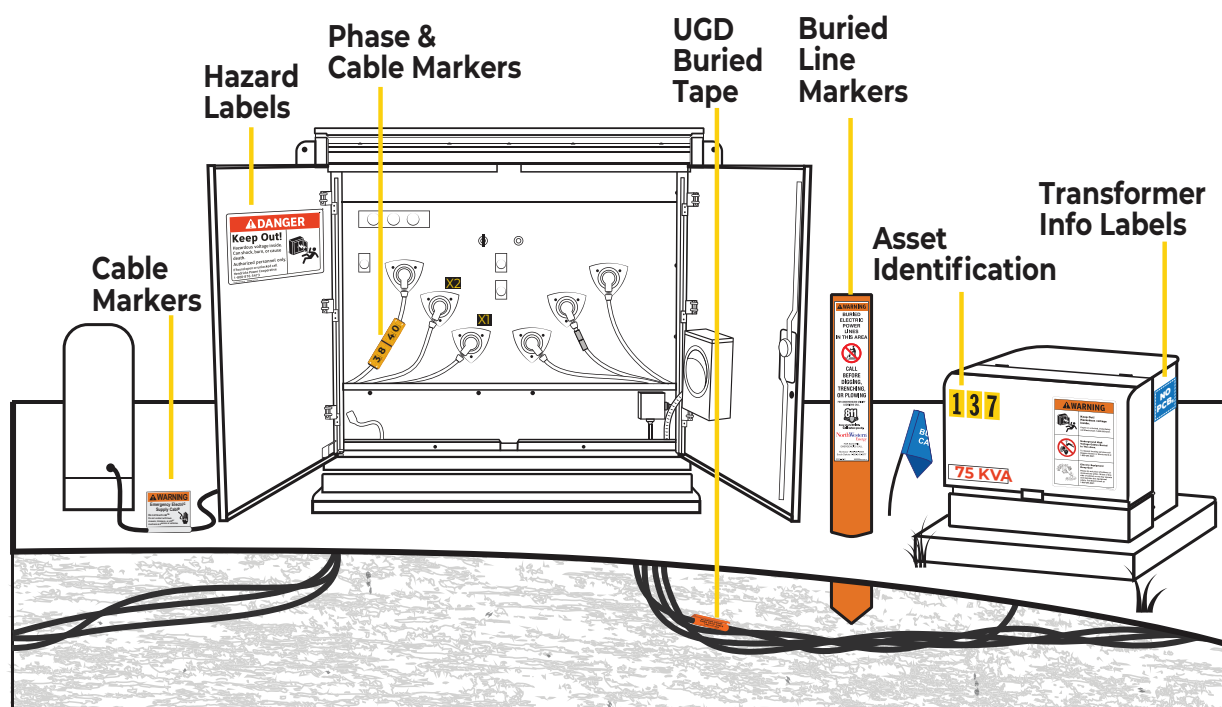
Add must-haves for safe and efficient excavation – now and in the future

Hitting buried utilities can be deadly and costly. Use underground electrical marking products to help workers accurately locate and mark power lines, cables, pipes and other vital infrastructure. This helps prevent injuries, delays and expensive repairs.

Underground Marking Products

Identify everything you need from hazard labels to assets

- ▶ Durable to withstand outdoor conditions
- ▶ Help ensure compliance with regulations
- ▶ Highly visible for fast identification



DIXIE

DIXIE LINE

188

AIR BREAK SWITCH

OAKWOOD

46kV

Streamlined identification



INDOOR CONSTRUCTION SITE SAFETY

Building safety from the inside out

Indoor construction sites present unique safety challenges, including confined spaces, heavy machinery and elevated work areas. Implementing comprehensive safety protocols, including proper equipment usage, fall protection measures and regular safety inspections, ensures a secure working environment for construction workers and minimizes the risk of accidents and injuries.



Ensure clear, visible labels are uniformly placed for easy recognition



Incorporate visual symbols to enhance comprehension for all workers



Implement a standardized colour-coding system for hazard identification



Conduct regular inspections to maintain label visibility and accuracy

Indoor Site Safety

Get essential solutions for floor-to-ceiling safety



Warning Signs & Labels

- ▶ Cater to specific concerns with diverse warning messages
- ▶ Apply to machinery, equipment and high-risk zones
- ▶ Boost compliance with best-practice standards and regulatory requirements



GHS Labels

- ▶ Communicate dangerous and hazardous material as indicated by OSHA's Hazard Communication Standard
- ▶ Variety of label materials for different surfaces
- ▶ Pre-printed blank diamonds available for custom applications and printing



Arc Flash Labels

- ▶ Available with either "Warning" or "Danger" headers
- ▶ Indicate equipment-specific hazard information
- ▶ Meet all current OSHA, NFPA, NEC and NFPA 70E requirements



ScaffTag® Scaffolding Tags

- ▶ Provide system, procedural and legal compliance for scaffolds, including ISO 9000
- ▶ Provide a clear inspection trail for safety audits
- ▶ Made of durable, weatherproof plastic



Spill Control & Countermeasures

- ▶ Water diversion, pads, SOCs, tank covers and booms
- ▶ Use around machinery, under leaky pipes, in messy traffic areas or for general maintenance
- ▶ Wide range of options from cost-effective, basic solutions for wipes, drips and leaks to highly durable, low-linting products



Contractor Services

► Contractor services take you from order to application fast

We know you need to complete your job on time and under budget. Brady's contractor services help you meet those goals, and our knowledgeable team is available to help with all your project needs from OSHA compliance guidance to product selection and fast ordering.



Custom Designed Product Options

Your vision, our expertise

Don't settle for off-the-shelf if your project demands a unique touch. Collaborate with our expert team to design and create identification solutions tailored to your precise specifications.

- Signs: Incorporate your branding, colours and unique messaging for a consistent look
- Labels: Design labels with specific dimensions, materials and adhesives to withstand your environmental conditions
- Pipe Markers & Valve Tags: Ensure clarity and compliance with custom colours, legends and sizes
- Asset Tracking: Tailor asset tags and labels to your tracking system and specific requirements



Essential safety

CONSTRUCTION LOCKOUT TAGOUT

Get key tools to protect workers from hazardous energy accidents

Lockout tagout procedures and products are vital for worker safety. By isolating and locking out energy sources on heavy machinery, electrical panels, hydraulic systems and more, lockout tagout prevents accidental start-ups and the release of hazardous energy.



Padlock Options

Nylon

- ▶ Ideal for electrical and general lockout applications
- ▶ Nylon body is lightweight with a durable, steel shackle option or a polymer plastic shackle option that's non-conductive and non-sparking

Velocity Padlocks

- ▶ Classic design includes a pin tumbler lock mechanism with a jagged key design
- ▶ Fewer key combinations make these the ideal for small work groups and facilities with fewer energy isolation points
- ▶ Lower cost combats turnover, lost locks and tight budgets

Custom Padlocks

- ▶ Keyed different or keyed alike
- ▶ Choose your exact quantity, key code, colour and material to minimize costs, control inventory and reduce waste
- ▶ Mix and match body types with the same key codes

Aluminum

- ▶ Ideal for indoor and outdoor use and heavy-duty applications
- ▶ Aluminum padlock with steel shackle is durable and corrosion-resistant



Construction Lockout Tagout

Take control of potential accidental energy release hazards



Padlocks

- ▶ Durable construction
- ▶ Keyed alike and keyed different options
- ▶ Available in multiple colours



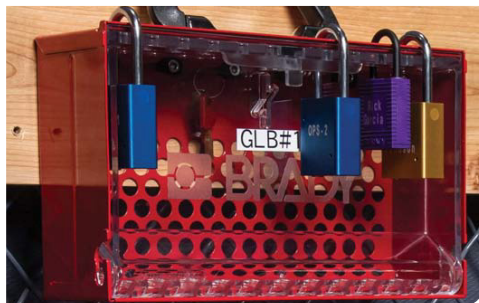
Hasps

- ▶ Multiple material options – all built tough
- ▶ Allows multiple users to lock on at once
- ▶ Easy to use



Lockout Tags

- ▶ Bold, clear labelling
- ▶ Tear-resistant materials
- ▶ Plenty of space for vital information



Group Lockout and Lock Boxes

- ▶ Centralized control
- ▶ Efficient team-based lockout
- ▶ Facilitates accountability and compliance



3-in-1 Plug Lockout

- ▶ Accommodates high- and low-voltage plugs up to 3 inches in diameter and 5.5 inches in length
- ▶ Two rotating top lids adjust to fit cords up to 1.25 inches in diameter



HVAC & Plumbing

Prevent rework and costly delays with solutions that make critical information clear

Construction sites thrive with streamlined processes that minimize errors, enhance safety protocols and maintain an organized work environment. In this critical stage, precision and efficiency are paramount, and any lapses in identification can lead to delays and safety hazards. Our comprehensive range of identification solutions, including printers, labels, signs and tags, directly addresses the pain points of ensuring clear and accurate marking on-site.

- ▶ Pipe, Tagging & Valve Safety
- ▶ Labelling, Signage & Lockout Tagout





Colour-code contents

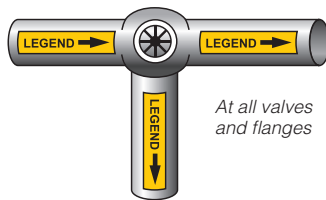
PIPE, TAGGING & VALVE SAFETY

Ensure contents and hazards are identified with clear marking

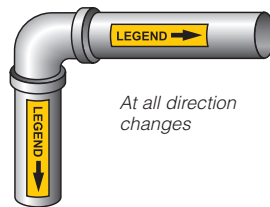
Optimize the flow of critical information throughout your facility. Our comprehensive solutions are purpose-built to provide clear and durable markings for pipes, valves and equipment that follow Federal and Provincial guidelines. Instantly communicate essential details, streamline maintenance, promote hazard awareness and ensure the safe operation of your facility using a wide range of standard and customizable options. Brady experts are well-versed in these regulations and can guide you toward the best solutions for your project.

Marker placement

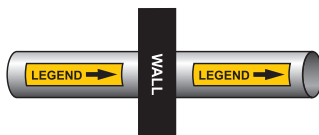
ASME (ANSI) A13.1-2007 visibility standard states that markers shall be located so that they are readily visible to plant personnel from the point of normal approach (ANSI is a US Standard that many Canadian companies follow).



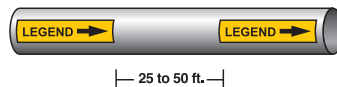
At all valves and flanges



At all direction changes

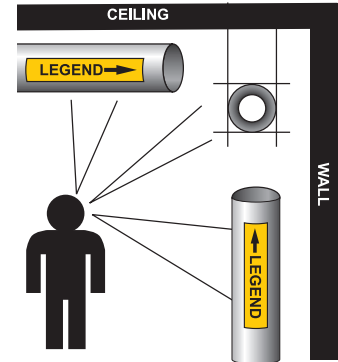


At both sides of floor or wall penetrations



— 25 to 50 ft. —

Every 25 to 50 ft. intervals on straight runs

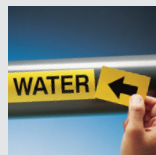


Placement of the marker may be above or below the centerline of the pipe, depending on the normal approach of personnel

Self-Sticking



B-946
Self-Sticking
Marker



B-736
Self-Sticking
Markers-To-Go



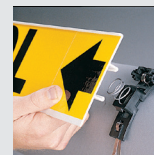
B-915
Snap-On
Marker



B-915
Strap-On
Marker



B-689
Wrap-Around
Marker



B-681 / B-883
High-Performance
High-Visibility
Marker



▶ Check out BradyCanada.ca/Pipe to learn about ANSI pipe marking standards.

Pipe Markers, Tags & Labels

Keep supply and access points marked with the right information and colours



Pipe & Duct Markers

- ▶ Multiple ways to apply: snap-on, wraparound, self-adhesive
- ▶ IIR-compliant pipe labels for ammonia refrigeration systems
- ▶ Colours, sizes and material options to meet the ASME (ANSI) standard A13.1 scheme for identification of pipe systems



Printable Safety Tags

- ▶ Great solutions for inspection tagging
- ▶ Easy to print, maintain and update
- ▶ Made of durable materials for harsh environments



Valve Tags

- ▶ Relay important valve-identifying information at the point of need
- ▶ Stock options with preset legends or customizable options available
- ▶ Multiple material options to fit diverse environments



Engraved Nameplates

- ▶ Long-lasting identification for effective asset management
- ▶ High-contrast engraving for easy readability
- ▶ Durable materials resist abrasions and chemicals



Clearer shutdowns

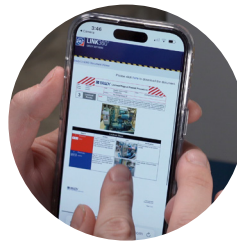
LABELLING, SIGNAGE & LOCKOUT TAGOUT

Implement precise labelling and lockout for project success

Take command of identification needs with industrial label printers, durable labels and intuitive label creation software. Streamline the identification of plumbing and HVAC systems for accurate installation, efficient maintenance and enhanced safety. And provide essential protection during work on critical systems with easy-to-use, effective valve lockout devices.



Label utilities for clear identification and safety



Implement lockout tagout procedures to ensure worker safety



Guide workers through utility areas and hazardous traffic



Utilize visual cues for efficient recognition in specific areas

Eliminate labelling delays – print on-site, on-demand



Pipe marking



GHS labelling



Safety tags



Lean / 5S labelling



Safety signs



Equipment and panel labelling

On-Demand Printing Systems & Valve Lockout

Get the tools you need to identify right and lock out securely



M710 and M510 Portable Label Printers

- ▶ Print text, barcodes, shapes and images using a keypad or software
- ▶ Durable yet portable to go wherever the job takes you
- ▶ Up to 1.5" (M510) or up to 2" (M710) label widths



S3100 Sign and Label Printer

- ▶ Walk up and print with onboard templates, touchscreen and keyboard
- ▶ Simple, single-colour printing
- ▶ Ideal for variable printing by multiple users



B30 Series Printer Materials

- ▶ Purpose-built for diverse labelling needs
- ▶ Withstand challenging environments and handling
- ▶ Seamlessly integrate with Brady printers for reliable results



Brady Workstation Label Creation Software

- ▶ Easily create safety signs and labels, pipe markers and more
- ▶ Upload and store SDS sheets for easy GHS label creation
- ▶ Premade templates with colour, sizing and graphics guidance or customizable to your needs



Valve Lockout Devices

- ▶ Wide selection for a variety of valves, including: ball, butterfly, cylinder, gate, plug and pneumatic valves
- ▶ Adjustable and universal devices add versatility
- ▶ Durable construction for superior impact and chemical resistance



Power & Electrical

Call out hazards and prevent incidents during this critical stage

Safety and project success hinge on clear communication. Unidentified wires, components and hazards pose a serious risk to workers and can lead to costly delays. When everyone on-site knows exactly what they're dealing with, they can make informed decisions, prevent accidents and expedite workflows. Invest in comprehensive identification solutions to create a safer, more efficient environment where ambiguity is eliminated, and projects stay on schedule.

- ▶ Electrical Installation
- ▶ Wire & Cable Labelling
- ▶ Arc Flash, Lockout & Safety Tagging





**Fast labelling anywhere**

ELECTRICAL INSTALLATION

Label faster, work smarter –
wherever the job takes you

Streamline labelling for complex wiring and rooftop installations with portable labellers and on-demand wire markers. Ensure clear, durable identification that withstands harsh conditions with solutions that are field-ready and durable with seamless, intuitive operation.

The world's most trusted label makers



Made with purpose

Printers that put the right information on the right label for the right environment.



Set up in seconds

Built-in LabelSense™ technology ensures auto setup with little to no calibration and waste.



Simplified with software

From automation to templates, create the right label fast with included software or app.

On-Demand Wire Marking

Label right, where and when needed, and stay on schedule



M210 and M211 Label Printers

- ▶ Up to 0.75" print width
- ▶ 12 material options
- ▶ 100 labels/day



M511 Label Printer

- ▶ Up to 1.5" print width
- ▶ 25 material options
- ▶ 8+ hours of work; 1,000 labels on a single charge



M610 Label Printer

- ▶ Up to 2" print width
- ▶ 50+ material options
- ▶ 750 labels/day



i5300 Industrial Label Printer

- ▶ Up to 4.25" print width
- ▶ 65+ material options
- ▶ 5,000 labels/day



Brady Workstation and Express Labels Mobile Software

- ▶ Access a wide range of fonts, templates, symbols and graphics
- ▶ Import data to generate batches of labels
- ▶ Create labels that adhere to industry standards and regulations



On-the-go convenience

WIRE & CABLE LABELLING

Ensure a high-performing network with effective labelling

Invest in clear, durable wire and cable labelling for a safer, more efficient construction site and future facility. A well-organized system minimizes the risk of accidents, simplifies troubleshooting, and streamlines repairs and upgrades. This translates to less downtime, faster problem resolution and protection for your critical network infrastructure.



Minimize errors during repairs and upgrades



Boost your compliance with industry standards, including TIA and NEC



Allow technicians to quickly identify cables and bundles



Implement labels made for the job, including self-laminate and heat shrink

Wire & Cable Labelling Options

Eliminate guesswork with wire and cable clarity



Heat Shrink Tubing

- ▶ Ideal for unterminated wires or cables
- ▶ Resistant to fading, chemicals, abrasion and extreme temperatures
- ▶ Heat shrink property creates a snug, protective fit around wires



Wrap-Around Labels

- ▶ Ideal for general marking of terminated or unterminated cables and wires that may be curved or become curved
- ▶ Resistant to various temperatures, chemicals, grease and more
- ▶ Adhere to a wide variety of surfaces



Self-Laminating Labels

- ▶ Ideal for terminated cables or wires that may need additional abrasion or chemical resistance
- ▶ Self-laminating design shields printed information
- ▶ Wraparound format provides a secure fit



Cable Flags

- ▶ Ideal for getting large amounts of data on small diameter wire and cables
- ▶ Quick and adaptable marking



Non-Adhesive Tags

- ▶ Ideal for multi-conductor cables or bundled wires and cables
- ▶ Can be used for temporary identification, equipment tagging and marking in harsh environments



Life-saving identification

ARC FLASH, LOCKOUT & SAFETY TAGGING

Leave nothing to chance when it comes to electrical safety

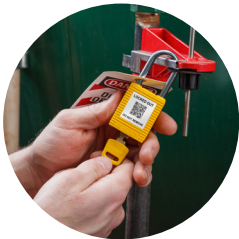
Mitigate the risk of electrical hazards with comprehensive arc flash labelling, lockout devices and safety tags. Ensure clear communication, prevent accidental energization and protect workers.



Label arc flash hazards according to NFPA 70E guidelines



Utilize signage to highlight safety protocols and hazards



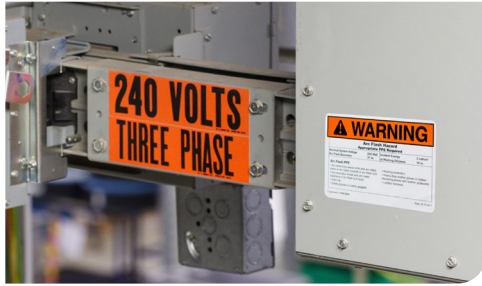
Ensure lockout tagout procedures are clear and accessible



Enhance productivity with well-placed, informative labelling and signage

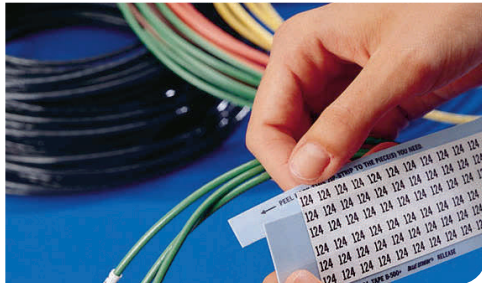
Electrical Labelling and Lockout

Keep workers informed and mitigate hazards



Pre-Printed Panel Voltage and Arc Flash Labels

- ▶ Alert employees to potentially dangerous machinery or energized equipment
- ▶ Orange markers meet ASME (ANSI) Standard ZG3.22
- ▶ Stick to any clean, dry surface
- ▶ Indicate equipment-specific arc flash hazard information



Pre-Printed Cable Markers

- ▶ Slim, lightweight labels are easy to deploy
- ▶ Excellent flexibility for wrapping around curved surfaces
- ▶ Withstand moderate heat, oil, water and dirt



Custom Engraved Equipment Nameplates

- ▶ Perfect for long-term indoor applications
- ▶ Colour-code equipment for an organized facility
- ▶ Lightweight, non-corrosive, non-conductive and impact resistant



HDPE Tags - Made in Canada

- ▶ Exceeds OSHA's pull force requirements
- ▶ Extremely durable, temperature ranging from -40°F to 180°F
- ▶ Resistant to most chemicals



Electrical Equipment Lockout Devices

- ▶ Wide variety of devices to shut down systems, including circuit breakers, push-buttons, rotary and wall switches, plugs and more
- ▶ Durable construction
- ▶ Easy to use



Fibre Pull & Asset Connection

Make sense of network complexity with on-demand ID solutions

Ensure a smooth fibre pull and simplify asset identification with durable labels and specialized marking solutions. Maintain network clarity, prevent damage to sensitive equipment and components, and promote efficient installation and future maintenance. Optimize project workflows and ensure a seamless transition into the operational phase of your network infrastructure.

- ▶ Cable & Rack Identification
- ▶ Printers & Labellers
- ▶ Labels & Flags







Powerfully efficient

CABLE & RACK IDENTIFICATION

Eliminate confusion and optimize your network ID

Ensure clear and accurate identification of fibre cables and rack components. Streamline troubleshooting, simplify network management and prevent costly errors with specialized fibre and rack labelling solutions.



Choose label materials specifically designed to withstand harsh construction environments



Keep technicians informed of hazards, including voltage information and warning symbols



Include specific asset information on labels, including barcodes, project numbers, dates and other essential data



Keep components well organized and professional in appearance, and streamline future troubleshooting

Cable and Rack Identification

Accelerate your projects while protecting networks



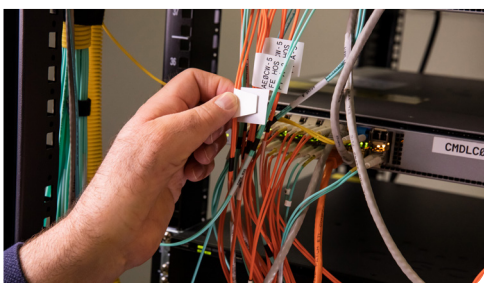
M211, M511 & M611 Label Printers

- ▶ Durable designs withstand harsh environments and are jobsite ready
- ▶ Create a wide range of labels for various applications
- ▶ Lightweight with various connectivity label creation options



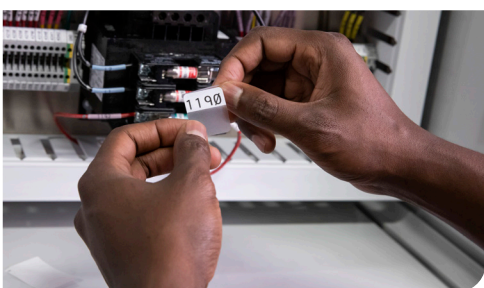
Express Labels Mobile

- ▶ Create labels anytime, anywhere from your mobile device
- ▶ Intuitive app makes label design quick and easy
- ▶ Streamline workflows with data importing and storage



Wire & Cable Marking Flags

- ▶ Ideal for getting larger amounts of data on small diameter wires and fibre optic cables
- ▶ Tough polyester material resists abrasions, cold temperatures and solvents
- ▶ Specially designed QuickFlag™ Tapered Labels prevent mismatched edges



Self-Laminating Wraparound Labels

- ▶ Designed with a clear protective layer
- ▶ Protection against abrasion, dirt, oils, solvents, water and excess handling
- ▶ Ultra-aggressive rubber-based permanent adhesive



Rectangles for Rack Identification

- ▶ Ideal for patch panel identification, external push buttons, switches and internal connection points
- ▶ Can be used for alphanumeric rating and serial plates that require nameplate quality
- ▶ UL approved



Finished Facility

Optimize future operations with clear and compliant identification

Ensure a seamless transition to a fully functional facility. Promote workplace safety, enhance asset management and streamline maintenance with comprehensive identification solutions. Implement compliant signage, equipment labels and wayfinding markers for easy navigation, and take the final step in delivering a successful, well-organized and safe facility.

- ▶ **Finished Facility Safety Solutions**
- ▶ **On-Demand Labelling & Asset ID**
- ▶ **Brady Safety Services**





Clear and compliant

FINISHED FACILITY SAFETY SOLUTIONS

Set up for long-term success with effective solutions built to last

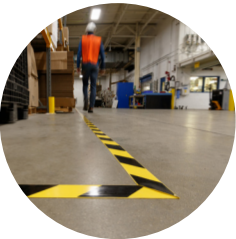
Promote safety, prevent accidents and optimize workflows with clear safety signage, durable floor marking and reliable absorbents. Ensure your facility operates smoothly and meets safety regulations.



Prevent slips, trips and falls by keeping absorbents on hand



Identify hazards, exits and directions with clear, durable signage



Clearly designate walkways, equipment areas and other zones



Track, manage and protect valuable assets



Design Your Own Custom Signs and Pipe Markers

Made in Canada

- ▶ Custom message
- ▶ No minimum order
- ▶ Ships quickly
- ▶ Variety of materials
- ▶ Custom sizes

Contact us for more info at torbradycs@bradycorp.com

Finished Facility Safety Products

Ensure safety, compliance and operational readiness



Floor Marking

- ▶ Purpose-built solutions for forklift traffic, cold and temporary applications
- ▶ Goes down easy – just wipe, peel, press
- ▶ Available in various colours, patterns and shapes
- ▶ Meet all of your area marking needs with the ToughStripe® family of floor tapes, including options for forklift traffic and cold environments



Emergency Running Man Signs

- ▶ Wide variety of options for usage indoors and out, including photoluminescent
- ▶ Help comply with OSHA regulations for clearly identified exits
- ▶ Braille and custom engraved options available



Safety Signage

- ▶ Promote safety and comply with OSHA/ANSI requirements
- ▶ Indoor/outdoor durable
- ▶ Wide array of sizes and materials for almost any application



Absorbents & Spill Kits

- ▶ Contain spills, reduce hazards and protect the environment
- ▶ Wide range of versatile solutions for diverse spill management
- ▶ Efficient cleanup saves time and resources



Asset ID

- ▶ Track, manage and protect valuable assets
- ▶ Stock and customizable tags and labels available
- ▶ Ideal for IT equipment, furnishings, tools, equipment and more



Asset clarity



ON-DEMAND LABELLING & ASSET ID

Maintain efficiency with on-demand solutions

Streamline asset identification and updates throughout your finished facility. Create and print durable labels as needed for maintenance, inventory tracking and operational clarity.



Utilize durable materials for long-lasting on-demand labels



Implement barcode or RFID technology for efficient asset tracking



Standardize labelling formats for consistent asset identification



Cut time by printing on-demand, streamlining label production

Asset Management

Adapt to changing facilities with on-demand solutions



S3700 Multicolour & Cut Sign and Label Printer

- ▶ Multicolour printing for visuals that truly pop
- ▶ XY plotter cutter cuts any shape
- ▶ Drop-and-go ribbons and labels for simple 20-second changeovers



BradyJet™ J7300 Inkjet Label Printer

- ▶ Accurate full colour for variable print jobs
- ▶ Precise printing on labels up to 4 in. wide
- ▶ Industrial-grade labels and inks withstand outdoor conditions up to two years (even longer indoors)



GHS Labels

- ▶ Communicate dangerous and hazardous material as indicated by OSHA's Hazard Communication Standard
- ▶ Variety of label materials for different surfaces
- ▶ Pre-printed blank diamonds available for custom applications and printing



V4500 Barcode Scanner

- ▶ Fast and accurate tracking for streamlined asset management
- ▶ Simplify preventive maintenance by making repair history available with a scan
- ▶ Verify equipment and tracking compliance with easy barcode scanning



HH83 Handheld RFID Reader

- ▶ Ergonomic, lightweight design is easy to hold and use (even with gloves)
- ▶ High-capacity battery supplies up to 12 hours of continuous use
- ▶ IP65-rated enclosure protects against dust and moisture



Expert safety. One source.

BRADY SAFETY SERVICES

Build, rebuild or optimize your safety programs for long-term success

Get everything you need from one trusted source – the experts at Brady Safety Services. Optimize safety and ensure OSHA compliance within your finished facility. We provide expert assessments, customized safety solutions, and staff training for a comprehensive, customized approach to safety based on your needs. Our commitment to safety helps you create a safe, compliant and productive work environment.



Reduce incidents and injuries with well-defined procedures and training



Maintain compliance and avoid costly penalties



Enhance operational efficiency with clear safety guidelines



Boost employee morale and trust with a strong safety culture

Brady Safety Services

Bring simplicity and peace of mind to complex programs and compliance requirements



Arc Flash Services

- ▶ Review your current program and any past assessments, and identify any safety issues or needed compliance improvements
- ▶ Risk assessments to compile data for arc flash calculations, single-line diagram and report creation, and required label installation
- ▶ Training options including refresher, qualified persons and train-the-trainer sessions
- ▶ 5-year reviews and infrared thermography available



Confined Space Services

- ▶ Inventory, data collection and space classification as permit or non-permit required
- ▶ Hazard assessments, methods of protection and verification, label needs, worker classification, PPE requirements and more
- ▶ Training focused on best practices, client-specific program elements, an overview of the 1910.146 OSHA regulation and more



Lockout Tagout Services

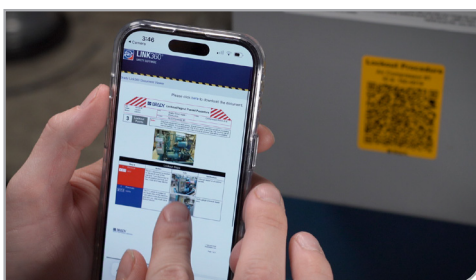
- ▶ Receive a comprehensive assessment of current LOTO program
- ▶ Ensure compliance with OSHA requirements and best practices
- ▶ Engineers develop standardized procedures and program
- ▶ Tailored to OSHA, site policies and best practices

Sustain program success with reliable facility lockout software



Link360® Safety Software

- ▶ Brady LINK360 is a unique combination of cloud software, mobile apps, and identification products that help you exceed safety and compliance regulations
- ▶ Cloud-based software allows you to store, track and manage documents for your programs so they are in a centralized place
- ▶ Create custom visual procedures and corresponding identification for lockout tagout, confined space and maintenance tasks
- ▶ Route procedures for approval prior to publishing



Link360® Process Plus Safety Software

- ▶ Best-practice procedure templates
- ▶ Isolation point, machine, system and procedure library
- ▶ Instant updates and real-time information
- ▶ Printer compatibility for tagging and labelling



We make products that make the world a safer and smarter place. From the depths of the ocean to outer space, from the factory floor to the delivery room — **we're just about everywhere you look.**

- ▶ For more information or to learn more about our innovative products, visit BradyCanada.ca or call 1-800-263-6179.

Canada
Customer Service: 1-800-263-6179
BradyCanada.ca