



## BBP®85 SIGN AND LABEL PRINTER



## BBP®85 SIGN AND LABEL PRINTER

**BIG, BOLD AND BETTER THAN EVER**



The BBP®85 Label Printer allows you to create 10" labels in multiple colors, and it has an easier than ever interface that anyone on your team can use! No more complex, tedious design steps. No more ordering and waiting. Now you can just walk up and print - instantly creating high quality, multi-colored visuals up to 10" wide.

### Big Output – Little Fuss

Create extra-large custom signs and labels right now! This printer has our fastest and easiest operating system, so anyone on your team can design visuals with little to no training. The ideal printer for multi-user Lean, 5S and Kaizen labeling events!

- Unmistakably large visuals up to 10" wide
- Just walk up and print – it really is that easy
- Timesaving label design apps to create pipe markers, safety signs, arc flash, right-to-know labels, and more
- USB port for importing files, fonts and graphics



### Bold Multi-Color Printing

Get your message noticed with strong, colorful visuals. Print up to 4 colors on a single label for professional-looking, custom-made signs, labels and warnings that demand attention.

- Highly durable multi-color thermal transfer printing
- Print common sign formats even faster using pre-printed sign header supplies
- Add more label creation flexibility with Markware™ Software (v3.9.3 and higher)
- Ethernet port for easy printer networking



### Best-of-the-Best Materials

Brady's sign and label materials lead the industry in durability and performance. They withstand harsh conditions, stay stuck on the most challenging surfaces and they simply last longer than other materials on the market. With the BBP®85 printer, you can choose from over one hundred supply options, including:

- Huge selection of 4" wide to 10" wide industrial grade outdoor materials
- Specialty materials including Reflective and Glow-in-the-Dark
- Pre-printed sign header supplies for GHS, arc flash and OSHA or ANSI safety signs, which means only one print pass required
- Rigid sign panels: Adhere a printed sign to a panel to create quick rigid signs that you can hang or post nearly anywhere





## BBP®85 SIGN AND LABEL PRINTER

## BBP®85 SIGN AND LABEL PRINTER



### Applications

#### Facility and Plant Maintenance:

- Pipe identification
- Machinery and equipment labeling
- Building and grounds identification
- Safety labels up to 10" wide
- Arc flash safety warnings

#### Safety and Compliance:

- Signs
- ANSI and OSHA safety labels and signs
- Hazardous chemicals (GHS/CLP, NFPA704M and Color Bar)
- GHS labels
- Emergency egress
- Arc flash warnings
- Lockout procedures
- Emergency egress marking

#### LEAN Manufacturing and Visual Workplace:

- 5S labels
- Kaizen event labels
- Lean metric board labels
- Housekeeping labels
- Visual workplace labels
- Predictive maintenance visuals
- Min/max labels

#### Laboratory Identification:

- Heavy duty chemical labels
- Safety labels and signs
- Research equipment labels
- 4-color NFPA704M diamond labels for chemical containers
- Lab housekeeping and instructional labels

#### Electrical:

- Panel Identification
- Arc flash "Warning" and "Danger" labels
- Equipment labels
- Operator control labels
- Panel "clearance" labels

### Printer and Accessories

Catalog #	Description
BBP85	BBP®85 Sign & Label Printer
B85-DC	BBP®85 Printer Dust Cover
B85-STYLUS	BBP®85 Replacement Stylus, 3/Pack
64692	Print Head Cleaning Pen

### BBP®85 Printer Ribbons

Choose from a variety of heavy-duty, smear-proof ribbons, including single color and multi-color paneled ribbons. These ribbons are uniquely designed with memory cells that communicate information to the BBP®85 printer.

#### Single Color Print Ribbons

Dimensions	Black	Blue	Green	Magenta	Orange	Red	White	Yellow
6.25" x 200'	13511	13596	13597	13598	13600	13595	13513	13599
8.8" x 200'	13510	13515	13516	13517	13519	13514	13512	13518

#### Two Color Paneled Print Ribbons

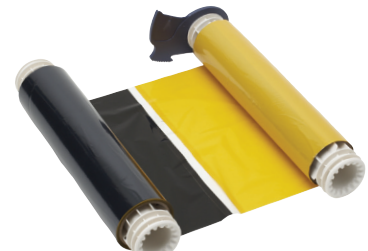
Dimensions	Black & Blue	Black & Green	Black & Orange	Black & Red	Black & Yellow
8" color panels used to create 2 color signs up to 8" long Typical yield : 100pcs x 8" labels					
6.25" x 200'	-	13704	13529	13523	13527
8.8" x 200'	-	13706	-	13522	-
15" color panels used to create 2 color signs up to 14" long Typical yield : 60pcs x 14" labels					
6.25" x 200'	13525	13705	-	13521	-
8.8" x 200'	13524	13707	13528	13520	13526

#### Four Color Paneled Print Ribbons

Dimensions	Black/Red/Blue/Green	Black/Red/Blue/Yellow	Black/Red/Orange/Blue
8" color panels used to create 2 color signs up to 8" long Typical yield : 50pcs x 8" labels			
6.25" x 200'	13537	13533	-
8.8" x 200'	13536	13532	51448
15" color panels used to create 2 color signs up to 14" long Typical yield : 30pcs x 14" labels			
6.25" x 200'	13535	13531	-
8.8" x 200'	13534	13530	-



Four Color Paneled Print Ribbons



Two Color Paneled Print Ribbons

MATERIAL SELECTION

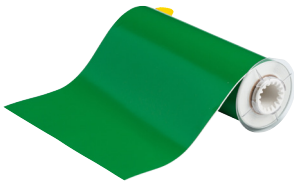
LABELS



Indoor/Outdoor Vinyl (B-595)

For all-purpose facility and safety identification: our best industrial vinyl

- Durable, low-shrink vinyl with our most aggressive adhesive and 8-10 year outdoor durability
- Conforms to irregular, curved, rough and highly textured surfaces (painted cinder blocks and wood, textured plastics, cast-iron and paper-jacketed pipes, powder-coated surfaces)



Service Temperature: -40°F to 180°F  
Application Temperature: 0°F to 180°F  
Average Outdoor Durability: 8 to 10 years outdoor vinyl label durability

Color		4" x 50'	6" x 50'	7" x 50'	8" x 50'	10" x 50'
Rec. Ribbon		13511	13511	13510	13510	13510
Black		13544	13605	-	13557	13614
Brown		13547	13608	-	13560	13617
Blue		13541	13602	13656	13554	13611
Clear		59529	59530	-	59531	59532
Green		13542	13603	13655	13555	13612
Gold		13545	13606	-	13558	13615
Gray		13546	13607	-	13559	13616
Orange		13543	13604	13653	13556	13613
Purple		13548	13609	-	13561	13618
Red		13540	13601	13654	13553	13610
White		13538	13549	13651	13551	13562
Yellow		13539	13550	13652	13552	13563

Pre-Printed Right-To-Know Chemical Labels (B-595)

For quickly creating NFPA and color bar labels

- Blank die cut labels pre-printed with chemical diamonds and color bars
- Allows printer to produce 5-color chemical labels in a single print pass
- Indoor/outdoor grade material withstands exposure to moisture, chemicals and handling



Service Temperature: -40°F to 180°F  
Application Temperature: 0°F to 180°F  
Average Outdoor Durability: 8 to 10 years outdoor vinyl label durability.

Color		4" x 6" (95 labels/roll)	6" x 6" (95 labels/roll)	7" x 10" (60 labels/roll)
Rec. Ribbon		13511	13511	13510
Color Bar + Text		130811	-	130812
Diamond Only		-	130810	-
Diamond + Text		130808	-	130809



## MATERIAL SELECTION

## LABELS



### Pre-Printed Pre-Cut Blank Sign Headers (B-595)

#### For creating arc ash and safety warning labels in seconds

- Faster way to design commonly used safety signs and labels
- Create custom, colorful safety labels using only a black ribbon
- Headers meet NFPA 70E, OSHA 1910.145 and ASME/ANSI Z535 standards
- Indoor/outdoor grade material conforms to rough, highly textured, and "difficult to adhere to" surfaces



Service Temperature: -40°F to 180°F

Application Temperature: 0°F to 180°F

Average Outdoor Durability: 8 to 10 years outdoor vinyl durability.

Color	4" x 6" (95 labels/roll)	7" x 10" (60 labels/roll)	10" x 14" (40 labels/roll)
Rec. Ribbon	13511	13510	13510
CAUTION	130749	130750	130748
DANGER	130752	130753	130751
NOTICE	130755	130756	130754
WARNING	130758	130759	130757
CAUTION	130761	130762	130760
DANGER	130764	130765	130763
CAUTION	-	132393	132392
CAUTION	-	132395	132394

### Pre-Printed GHS / CLP Chemical Labels (B-7569)

#### For GHS and hazard communication labeling

- Blank labels with pre-printed red diamonds save time during label design
- 6 diamond layouts that match templates in Markware™ Software, available in 2 sizes each
- Indoor/outdoor vinyl material withstands exposure to moisture, chemicals and handling



Service Temperature: -4°F to 180°F

Application Temperature: 50°F to 180°F

Average Outdoor Durability: up to 3-5 years

Color	4.1" x 6.1" (90 labels/roll)	6.1" x 8.3" (70 labels/roll)
Rec. Ribbon	13511	13511
	130766	130772
	130767	130773
	130768	130774
	130769	130775
	130770	130776
	130771	130777

\*\*Markware™ Software v3.9.1 or higher required  
(free upgrade available for v3.x owners)

After features: GHS/CLP label module included in Markware™

Software features:

- 18 pre-formatted label layouts with built-in GHS symbols
- Labels are auto-populated based on selected hazard statements and GHS symbols
- Prompts for additional variable data and second language option





MATERIAL SELECTION

LABELS



Low-Halide Polyester (B-569)

For labeling stainless steel and smooth surfaces

- Low-halide content for labeling stainless steel pipes and surfaces
- Applies best to very smooth surfaces and is ideal for mounting to rigid panels

Service Temperature: -40°F to 212°F  
Application Temperature: 0°F to 212°F  
Average Outdoor Durability: 3-5 years



Color		4" x 50'	6" x 50'	7" x 50'	10" x 50'
Rec. Ribbon		13511	13511	13510	13510
Clear		13564	13568	13572	13576
Ochre		99167	99168	99169	99170
Orange		13567	13571	13575	13579
White		13565	13569	13573	13577
Yellow		13566	13570	13574	13578



Retro Reflective Tape (B-584)

For highly reflective identification that shines back brightly when struck by light

- Ideal for labeling outdoor metal utility poles, pedestals, jobsite equipment and roof-top equipment especially in low light

Service Temperature: -40°F to 158°F  
Application Temperature: 0°F to 158°F (yellow & orange),  
50°F to 158°F (silver)  
Average Outdoor Durability: 4-6 years



Color		4" x 33'	7" x 33'	10" x 33'
Rec. Ribbon		13511	13510	13510
Orange		13404	13403	13402
Silver		13580	13585	13590
Yellow		51584	51585	51586



BradyGlo™ High-Intensity Photoluminescent Tape (B-526)

Identification that glows in the dark for up to 10 hours

- Ideal for marking emergency utility shut-offs, fire extinguishers, alarm pulls, and vital equipment controls

Service Temperature: -40°F to 140°F  
Application Temperature: 40°F to 140°F



Color		4" x 33'	7" x 33'	10" x 33'
Rec. Ribbon		13511 / 13595	13510 / 13514	13510 / 13514
Luminous Green		105912	105913	105914



## MATERIAL SELECTION

# LAMINATING SYSTEM AND PANELS



## Laminating System

**Quickly mount BLP®85 output to plastic or aluminum sign blanks in seconds**

Laminating Options:

- Mount label to a rigid plastic or aluminum sign panel
- Overlaminates documents with a single or double-sided flexible, clear overlaminate

#Catalog	Description
105038	BLS1255 Laminating System
105041	12" x 50' Double-sided polyester overlaminate

## Rigid Sign Panels & Clear Acrylic Panels

Sign blanks let you laminate output using the BLS1255 Laminator. These plastic and aluminum blanks are sized to fit output and come in white, yellow and orange. Clear acrylic panels have pressure sensitive adhesive to protect graphics.

### Plastic - Rounded corners and hole punched

Dimensions	Orange	White	Yellow
4.25" x 6.25"	13622	13620	13621
7.63" x 10.38"	13625	13623	13624
10.25" x 14.25"	13628	13626	13627

\* Comes in packs of 10 each

### Aluminum - rounded corners and hole punched

Dimensions	Orange	White	Yellow
4.25" x 6.25"	13631	13629	13630
4.25" x 10.25"	-	106461	-
7.25" x 10.25"	13634	13632	13633
7.63" x 10.38"	-	106460	-
10.25" x 10.25"	-	106462	-
10.25" x 14.25"	13637	13635	13636

\* Comes in packs of 10 each

### Clear acrylic panels with pressure sensitive adhesive

Dimensions	Catalog #
4" x 6"	13638
4.25" x 10.25"	106464
7.25" x 10"	13639
7.25" x 10.25"	106463
10" x 14"	13640
10.25" x 10.25"	106465

\* Comes in packs of 10 each



#### Step 1:

Peel away the first 1 1/2" of liner from the back of BLP®85 printer output. Apply to blank panel, aligning edge of label with edge of panel.



#### Step 2:

Insert sign into laminator and rotate handle until first 1" of sign is 'pinched'. Pause and then grasp the liner of the sign and pull at the same time as you rotate handle rapidly, advancing sign through the laminator.



#### Step 3:

In less than 30 seconds, you have a rigid sign ready to hang. Choose from aluminum, plastic or clear acrylic panel materials.

## CONTACT US

Brady's global presence makes it easy for you to do business with us wherever you are. To find out more about Brady and our products, please visit us at [www.bradyd.com.sg](http://www.bradyd.com.sg) or email us at [ContactUs\\_SA@bradycorp.com](mailto:ContactUs_SA@bradycorp.com).

### APAC Offices

#### AUSTRALIA

Telephone: (612) 8717 6300

#### PHILIPPINES

Telephone: (65) 6477 7261

#### CHINA

Telephone: (86) 21 6100 6588

#### SINGAPORE

Telephone: (65) 6477 7261

#### HONG KONG

Telephone: (852) 2216 9283

#### SOUTH KOREA

Telephone: (02) 2192 0700

#### INDIA

Telephone: (91) 80 66582 900

#### TAIWAN

Telephone: (86) 2 2657 6108

#### INDONESIA

Telephone: (65) 6477 7261

#### THAILAND

Telephone: (66) 2 512 2400

#### JAPAN

Telephone: (81) 042 655 2535

#### VIETNAM

Telephone: (65) 6477 7261

#### MALAYSIA

Telephone: (60) 4 810 1688

### International Offices

#### EUROPE

Website: [www.bradyeurope.com](http://www.bradyeurope.com)

#### NORTH AMERICA

Website: [www.bradyd.com](http://www.bradyd.com)

BBP®85 SIGN AND LABEL PRINTER

