



BMP® 21 Label Printer



BMP® 21 LABEL PRINTER

BMP® 21 LABEL PRINTER



Features & Benefits

- Large display with backlight
- Automatic label formatting
- Optional accessories available include magnet, wrist strap and flashlight for one-handed operation
- Flashlight accessory enables easy viewing in dark areas
- Prints continuous labels up to 3/4" wide
- Ergonomic dual cutter buttons hold the label until you need it
- Internal memory for storing, retrieving and deleting label files
- Automatic data serialization and built-in text, graphics and barcodes
- Access to 80 different symbols, 48 general identification symbols, 19 electrical symbols and including 13 datacomm symbols
- Prints on PermaSleeve™ heat shrink sleeves, continuous self-laminating material and more

Meet the newest member of your crew

Add a BMP® 21 Label Printer to your team and you'll never look back. This thermal transfer printer creates clear, legible labels with industrial-strength staying power to withstand even the harshest environments.

Simple to operate and quick to print, it is the must-have labeling tool for voice/data comm, electrical and general industrial crews. You can create your labels just once, knowing they will stay stuck and stay legible for the years ahead.

If your team is looking for a labeling solution that can lead to higher productivity and a safer, more organized workplace, turn to the BMP® 21 Label Printer.

Printer

Catalog #	Description
BMP21	BMP® 21 Mobile Printer
BMP21-KIT-110943	BMP® 21 Printer Kit with AC Adapter
BMP21-KIT-110942	BMP® 21 Printer Kit with Carrying Case
BMP21-KIT-110941	BMP® 21 Printer Kit with Carrying Case and AC Adapter
BMP21-KIT-110940	BMP® 21 Printer Kit with Carrying Case, AC Adapter and Multifunctional Tool
BMP21-KIT-114305	BMP® 21 Printer Kit with Multifunctional Accessory

Accessories

Catalog #	Description
BMP21-AC	AC Adapter BMPTM 21 Class B
BMP21-HC	BMPTM 21Hardside Carrying Case
BMP21-MAGNET	BMPTM 21 Magnet Only Accessory
BMP21-TOOL	BMPTM 21 Multifunctional Accessory

APPLICATIONS

GENERAL I.D.



In the industrial workplace, productivity pays off. That is why Brady's BMP® 21 Label Printer creates high quality, durable labels more efficiently than ever before. Equip your team with the BMP® 21 Label Printer and be on your way to a safer, more productive workplace.

Features & Benefits

Faster, more efficient labeling

- Magnet and wrist-strap for one-handed operation
- Automated serialized printing
- Built-in symbols
- Industrial strength dual cutter that holds labels until you need them

Durable, made-to-last labels

- Wide array of label types and sizes
- Labels withstand extreme temperatures, irregular surfaces, and chemicals
- Vinyl material lasts up to 5 yrs in extreme outdoor conditions

All-in-one industrial labeling tool

- Crystal clear thermal transfer printing
- On demand labels for organizing and identifying

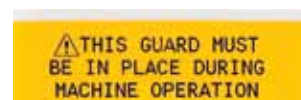
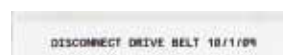


Labeling applications

- Equipment identification
- Safety/directional identification
- Lean identification
- Asset identification
- Bin and shelf labels
- Secondary container identification
- Calibration labels
- Hardhat labels and more



Actual labels



APPLICATIONS

ELECTRICAL



For years, you've counted on Brady for high performance, industrial strength labels. Now, Brady's taken its most popular wire identification materials and made them available in an easy to use, economical printer – the BMP® 21 Label Printer.

Features & Benefits

Faster, more efficient labeling

- Advanced serialization
- Magnet and wrist strap for one-handed operation
- Dual cutter buttons cut and hold the labels until you remove them
- Optional flashlight accessory for dark areas

Fool-proof traceability

The BMP® 21 Label Printer:

- Recognizes when you insert a new cartridge
- Allows you to add text, symbols or barcodes on the same label
- Prints self-laminating wire markers for long lasting traceability

Extreme staying power of Brady labels

Even in severe temperatures, you can depend on Brady labels to stick and stay stuck. Whether it's a smooth, curved, textured or highly textured surface, Brady has a label material for every application.

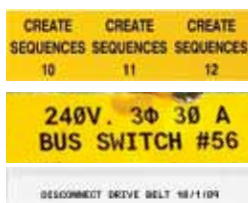


Electrical labeling applications

- Wire & cable identification
- Rating plates
- Terminal blocks
- Inside and outside of electrical panels
- Self-laminating wire identification
- Tool and equipment identification

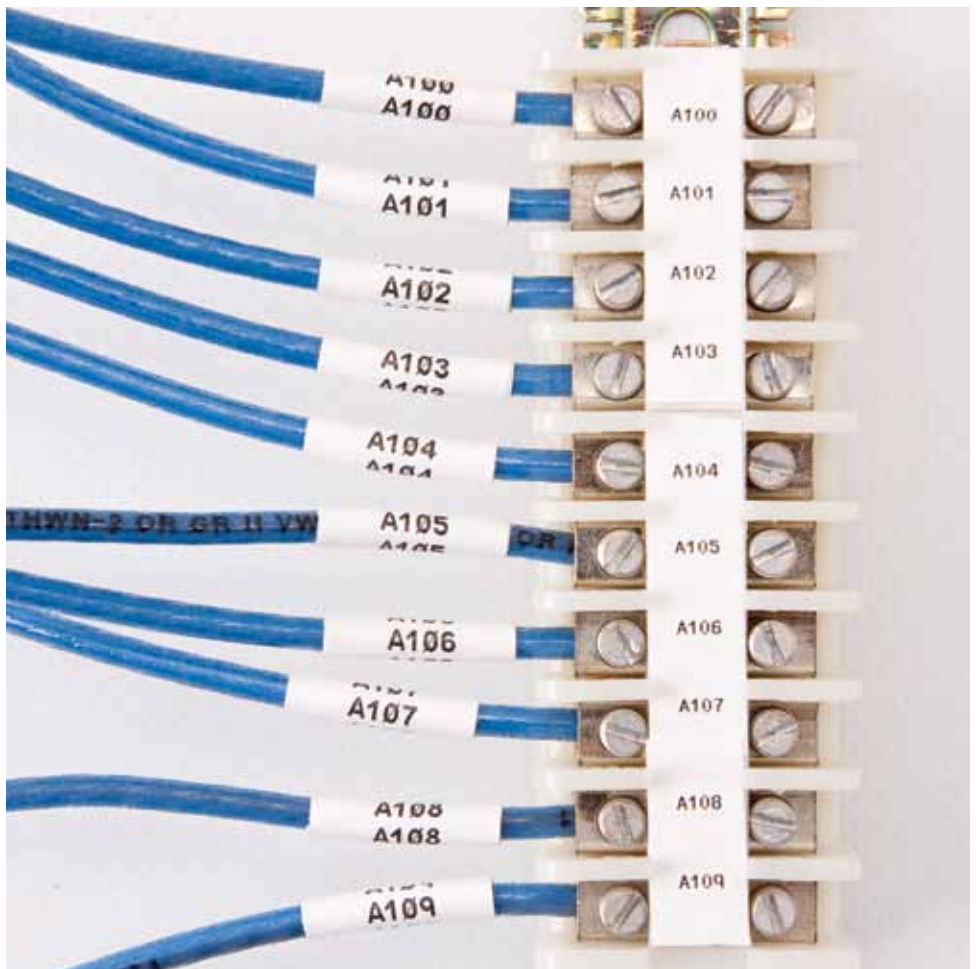


Actual labels



APPLICATIONS

DATA COMM



Why spend time creating labels that are difficult to read and don't stick? With the BMP® 21 Label Printer, you can be confident your labels will stay stuck for years. Specifically designed for industrial environments, Brady's labels stay legible, identifiable, and most importantly, attached.

Features & Benefits

All-in-one voice/data comm labeler

- 80 different symbols, including 13 specific to voice and data comm
- Labels stay stuck on smooth, curved, textured and highly textured surfaces, even in extreme temperatures



DataComm labeling applications

- Cable and wire identification including self-laminating labels
- Patch panels
- Face plate identification
- Tool and equipment identification

High quality, made-to-last labels

- Clear, traceable labels everytime
- Self-laminating wire identification
- Magnet and pole strap for one-handed operation
- 203 dpi thermal transfer print
- Optional flashlight accessory for dark areas

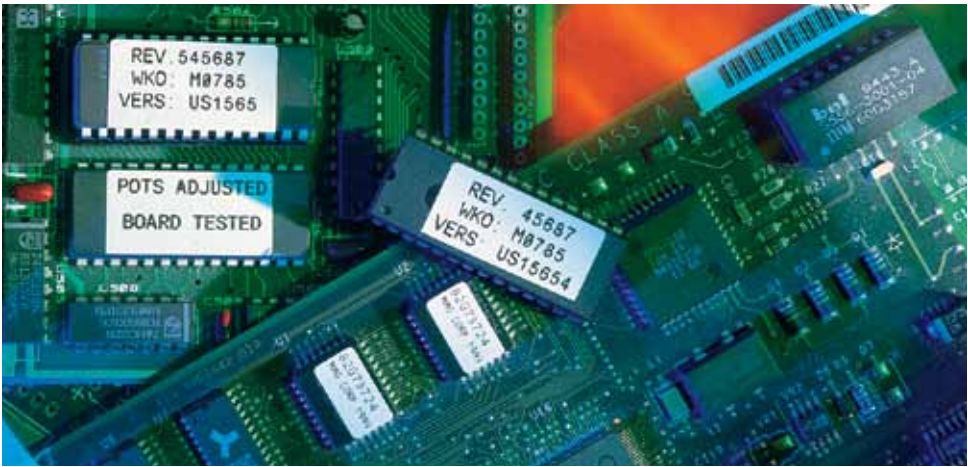


Extreme staying power of Brady labels

Even in severe temperatures, you can depend on Brady labels to stick and stay stuck. Whether it's a smooth, curved, textured or highly textured surface, Brady has a label material for every application.



MATERIAL
SELECTION GUIDE



Indoor/Outdoor Vinyl

- Adheres to irregular, curved and rough surfaces
- Stands up to grease, oil and most industrial chemicals
- 5 years average outdoor durability in temperatures from -40 °F to 180 °F

Applications

- Pipes
- Tools
- Bins
- Panels
- Round Surfaces
- Containers
- Components
- Instruments

Nylon Cloth

- Ideal for environments where temperature extremes and where moisture, oil and dirt can degrade less durable material

Applications

- Wires and cables
- Patch panels
- Terminal blocks
- Face plates

PermaSleeve® Wire Marking Sleeves

- Heat-shrinkable
- Self-extinguishing
- Meets print performance standards of MIL-M-M-81531, MIL-STD-202F Method 215 and UL Recognized Standard 224

Applications

- Panel identification
- Wire and cable marking

Polyester

- High adhesion
- Translucent
- Suitable for Autoclave and Freezer

Applications

- Components
- Racks and bins
- Instruments

Self-Laminating Vinyl

- Self-extinguishing and self-laminating
- Excellent water and oil resistance
- Excellent abrasion resistance

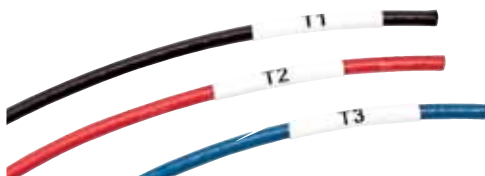
Applications

- Panel identification
- Wire and cable marking

	Indoor/Outdoor Vinyl	Nylon Cloth	PermaSleeve™	Polyester	Self Laminating Vinyl
Smooth Surfaces	✓	✓		✓	
Textured Surface	✓	✓			
Cable and Wire		✓	✓		✓
High Textured Surface		✓			
Terminal Blocks		✓			
Patch Panel		✓			
General ID	✓	✓		✓	

MATERIALS

MATERIALS
AVAILABLE



Indoor/Outdoor Vinyl

Color	0.375" x 21'	0.5" x 21'	0.75" x 21'
Black on White	M21-375-595-WT	M21-500-595-WT	M21-750-595-WT
Black on Yellow	M21-375-595-YL	M21-500-595-YL	M21-750-595-YL
White on Red	M21-375-595-RD	M21-500-595-RD	M21-750-595-RD
White on Blue	M21-375-595-BL	M21-500-595-BL	M21-750-595-BL
White on Green	M21-375-595-GN	M21-500-595-GN	M21-750-595-GN
Black on Orange	M21-375-595-OR	M21-500-595-OR	M21-750-595-OR

Nylon Cloth

Catalog #	Dimensions	Color	Description
M21-375-499	0.375" x 16'	Black on White	Nylon Cloth
M21-500-499	0.5" x 16'	Black on White	Nylon Cloth
M21-750-499	0.75" x 16'	Black on White	Nylon Cloth
M21-375-499-TB	0.375" x 16'	Black on White	Nylon Cloth
M21-500-499-TB	0.5" x 16'	Black on White	Nylon Cloth

PermaSleeve® Wire Marking Sleeves

Catalog #	Dimensions	Color	Description
M21-125-C-342	0.235" x 7'	Black on White	PermaSleeve™ Heat-Shrink Polyolefin
M21-187-C-342	0.335" x 7'	Black on White	PermaSleeve™ Heat-Shrink Polyolefin
M21-250-C-342	0.439" x 7'	Black on White	PermaSleeve™ Heat-Shrink Polyolefin
M21-375-C-342	0.645" x 7'	Black on White	PermaSleeve™ Heat-Shrink Polyolefin

Polyester

Catalog #	Dimensions	Color	Description
M21-375-423	0.375" x 21'	Black on White	Permanent Polyester
M21-500-423	0.5" x 21'	Black on White	Permanent Polyester
M21-750-423	0.75" x 21'	Black on White	Permanent Polyester
M21-375-430	0.375" x 21'	Black on White	Clear Polyester
M21-500-430	0.5" x 21'	Black on White	Clear Polyester
M21-750-430	0.75" x 21'	Black on White	Clear Polyester
M21-375-461	0.375" W x 21'	Black on White	Self-Laminating Polyester
M21-500-461	0.500" W x 21'	Black on White	Self-Laminating Polyester
M21-750-461	0.750" W x 21'	Black on White	Self-Laminating Polyester

Self-Laminating Vinyl

Catalog #	Dimensions	Color	Description
M21-750-427	0.75" x 14'	Black on White/Translucent	Self-Laminating Vinyl
M21-1000-427	1" x 14'	Black on White/Translucent	Self-Laminating Vinyl
M21-1250-427	1.25" x 14'	Black on White/Translucent	Self-Laminating Vinyl
M21-1500-427	1.5" x 14'	Black on White/Translucent	Self-Laminating Vinyl

CONTACT US

Brady's global presence makes it easy for you to do business with us wherever you are. To find out more about Brady and our products, please visit us at www.bradyid.com/ap or email us at ContactUs_SEA@bradycorp.com.

APAC Offices

AUSTRALIA

Telephone: (612) 8717 6300

CHINA

Telephone: (86) 21 6100 6588

HONG KONG

Telephone: (852) 2216 9283

INDIA

Telephone: (91) 80 66582 900

INDONESIA

Telephone: (65) 6477 7261

JAPAN

Telephone: (81) 042 655 2535

MALAYSIA

Telephone: (60) 4 646 2700

PHILIPPINES

Telephone: (65) 6477 7261

SINGAPORE

Telephone: (65) 6477 7261

TAIWAN

Telephone: (86) 2 2657 6108

THAILAND

Telephone: (66) 2 512 2400

VIETNAM

Telephone: (65) 6477 7261

International Offices

EUROPE

Website: www.bradyeurope.com

NORTH AMERICA

Website: www.bradyid.com

BMP® 21 Label Printer

