



BRADYGLOTM
PHOTOLUMINESCENT PRODUCTS

Distributed by:

BRADYGLOTM
PHOTOLUMINESCENT PRODUCTS

Y120706

Safety & Facility Identification

BRADY[®]
WHEN PERFORMANCE MATTERS MOST[™]

Increasing Demand for Photoluminescent Materials

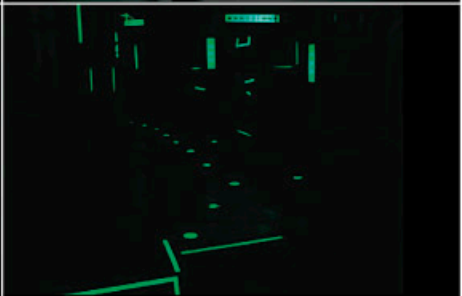


Increasing urbanization and industrialization have resulted in rapid growth in population densities within Asian cities and the construction of highly complex buildings and facilities. Under emergency situations where the primary and/or backup light sources are compromised, effective photoluminescent materials, with their glow-in-the-dark capability, can serve as life-saving evacuation indications. Demand for photoluminescent materials is also greatly fuelled by terrorist threats and a rising safety consciousness.

Indeed, more photoluminescent products are being installed, not only to meet standards, but also with the intent to save lives!



What if the power gets cut off
and all lights are out?



Can you find
your way out?

Photoluminescence at work

Photoluminescent pigments are made up of inorganic materials such as Aluminate, Silicate, or Aluminosilicate. An activator such as Aluminate Europium is usually present to dope the pigments so that they will emit light after UV absorption. The glow intensity and duration are dependent on the type and quantity of pigments, manufacturing processes, and construction of the finished products. There are international and industry standards to classify & specify photoluminescent materials based on glow intensities and durations.

Photoluminescent materials can be charged up by various common light sources such as fluorescent lamps, light bulbs, stray light, sunlight, etc. The charging period is usually short (in the range of a few minutes), and the glow duration can last from 1 to 12 hours or more, depending on the types and grades of materials used. This absorption and emission process repeats itself. Photoluminescent products require no electrical power supply and are also maintenance-free.



Why BradyGlo™ ?

BradyGlo™ products and materials are proprietary to Brady. We have over 90 years of experience in developing, engineering and manufacturing safety identification solutions for a variety of industries. We understand your needs for safety, quality, durability and easy installation.

Brady manufactures our own BradyGlo™ range of products and materials using non-toxic, non radioactive mineral substances. We therefore have full control over the durability and quality of our products. Brady offers up to a 6-year limited warranty for BradyGlo™ product range, this is well above what most competitors are offering today. BradyGlo™ products have been tested and comply with to the relevant international and industry standards. Our products will be supported by recognized certifications and test reports.

The applications for photoluminescent materials are vast and rapidly expanding. Brady believes and practises consultative, knowledge-based selling approach for the BradyGlo™ product range. We will work closely with you to create a custom BradyGlo™ solution while exploring new product applications.

Trusted Credibility

- Backed by 90 years of industrial safety experience

Quality Assurance

- Manufacturer's 6-years warranty

Guaranteed Qualification

- Industry compliance

Consultative Approach

- Solution that best meets your needs

Turnkey Solutions

- Hassle-free



Last but not least, Brady trains and supports our consultants and accredited partners to provide product training, on-site surveys, installation services, on-site audits, and maintenance and project bidding. When it comes to hassle-free turnkey solutions, Brady is your best choice.

Safety Egress Identification

Human beings tend to panic or show anxiety under low or no-light situations. They become very sensitive to any light source and will subconsciously seek out and follow it. Light-emitting photoluminescent products can be applied as crucial evacuation indications to direct and facilitate smooth egress to safety. Many facilities have a genuine need for reliable evacuation solutions, including:

- High-rise commercial & residential buildings
- Shopping malls / Hotels / Supermarkets
- Underground train stations / Carparks / Malls / Tunnels / Expressways
- Airports / Airplanes / Vessels / Oil rigs
- Manufacturing plants / Process control stations / Engine rooms
- Power stations
- Confined spaces
- Heavy industries such as Mining, Oil & Gas, Petrochemical, Chemical processing, etc



Applications of BradyGlo™

IMO Safety Signs

To ensure the safety of passengers and workers on board vessels and offshore oil rigs, standards (DIN 67510, IMO A.752(18)) have been established to specify and regulate the use of photoluminescent products as safety egress and safety equipment identification. BradyGlo™'s products exceed these standards by 3 to 7 times, respectively. BradyGlo™'s comprehensive IMO product range is your one-stop shop solution.

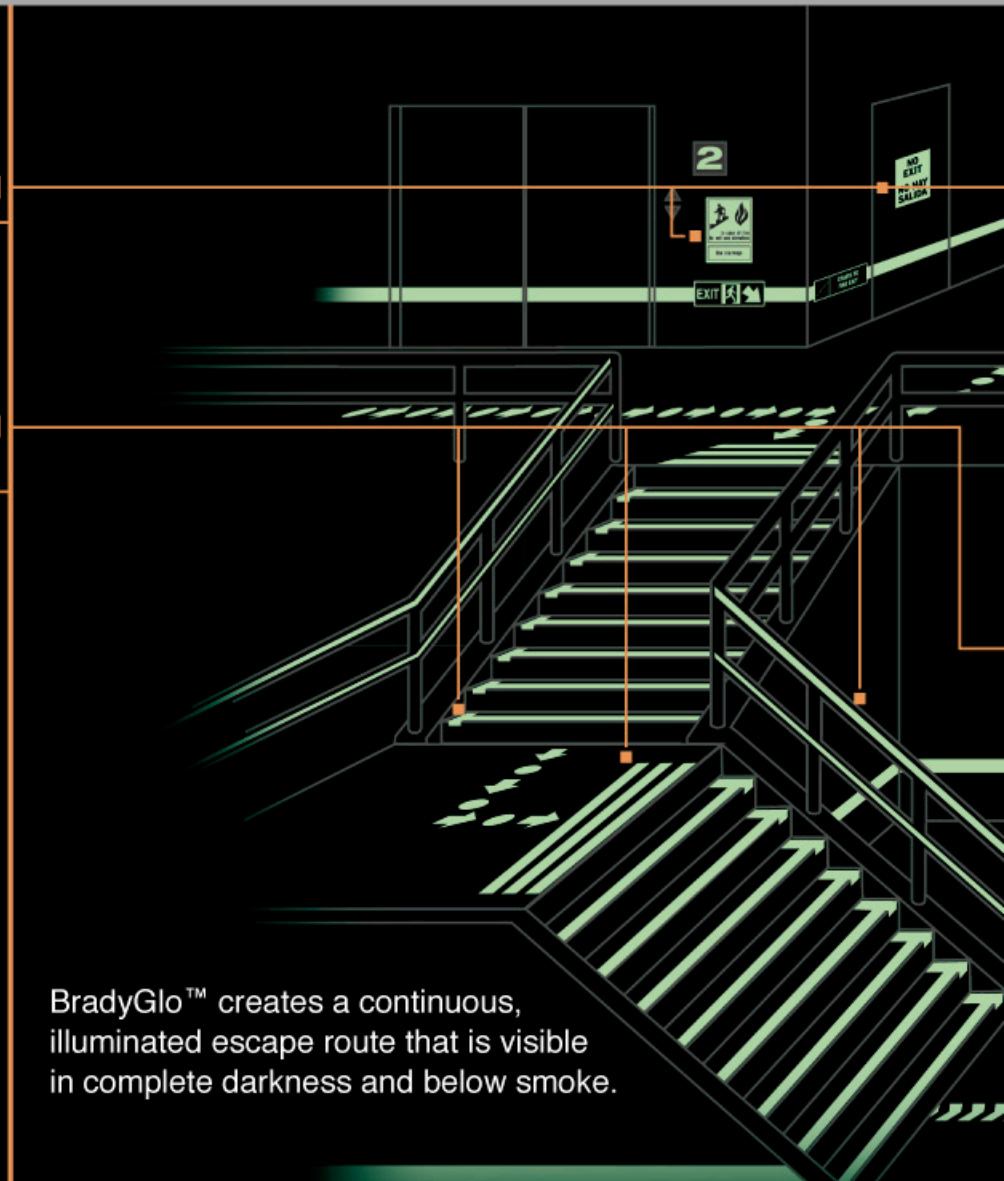
*DIN: Deutsches Institut für Normung
IMO: International Maritime Organization*

BradyGlo™ Signage

- Clear, concise direction at point of need
- Identify means of egress and fire protection
- Warn of equipment and physical hazards

BradyGlo™ High Intensity Tapes and Markers

- Line walls and handrails
- Mark out exit doors, fire extinguishers, first aid equipment, door frames and handles, hazards, and escape routes
- Anti-slip tape and stair markers further facilitate a safe evacuation



BradyGlo™ creates a continuous, illuminated escape route that is visible in complete darkness and below smoke.



Expanding applications

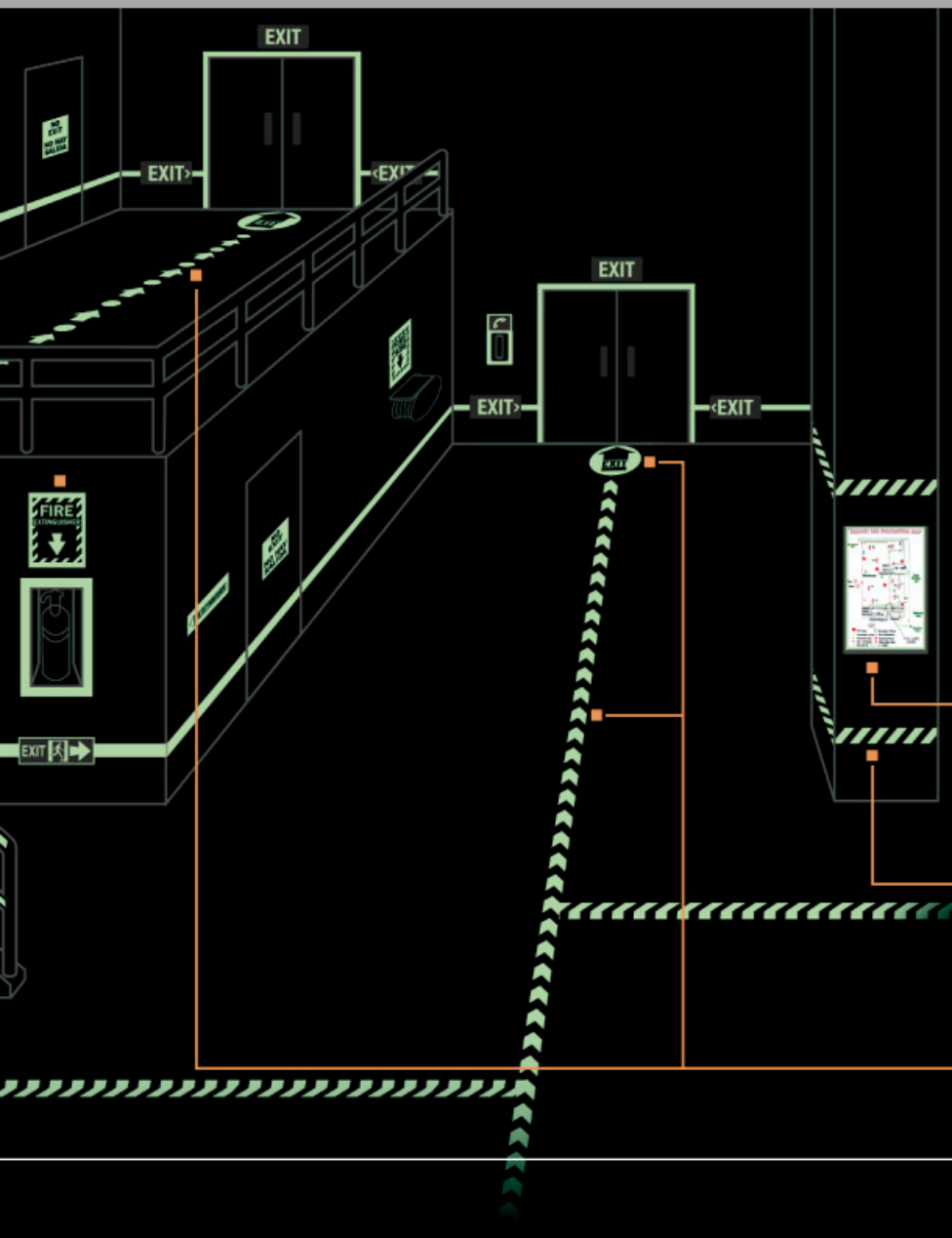
Photoluminescent products should not be restricted to only safety egress identification. Today there are increasing applications for photoluminescent materials, including:

- Safety vests to compliment the existing reflective strips
- Sports apparel such as jogging shoes
- Theatre seat identification
- Handphones and personal entertainment devices
- Vehicle interior control buttons
- Vehicle license plates
- Night / low-light safety identification such as wearable arm bands, vehicle stick-ons and carpark traffic control posts
- Night-aiming apertures of firing weapons
- Commercial promotion / advertising materials
- Decorations in pubs and discos
- Others

Brady's strength in consultative selling, die-cutting and local converting put us in the best position to work with you to explore new applications for BradyGlo™.

Have any ideas for further applications of BradyGlo™ ? Submit them to:

BradyGlo@bradycorp.com
Let's make it happen!



BradyGlo™ Evacuation Route Maps

- Help people find the nearest exit from any given point in a building
- Put critical emergency exit information at the point of need

BradyGlo™ Striped Safety Tape

- Apply on the floor and around obstacles that need to be avoided; this may include doors, equipment, poles, beams, and partitions

BradyGlo™ Dots, Arrows & Floor Markings

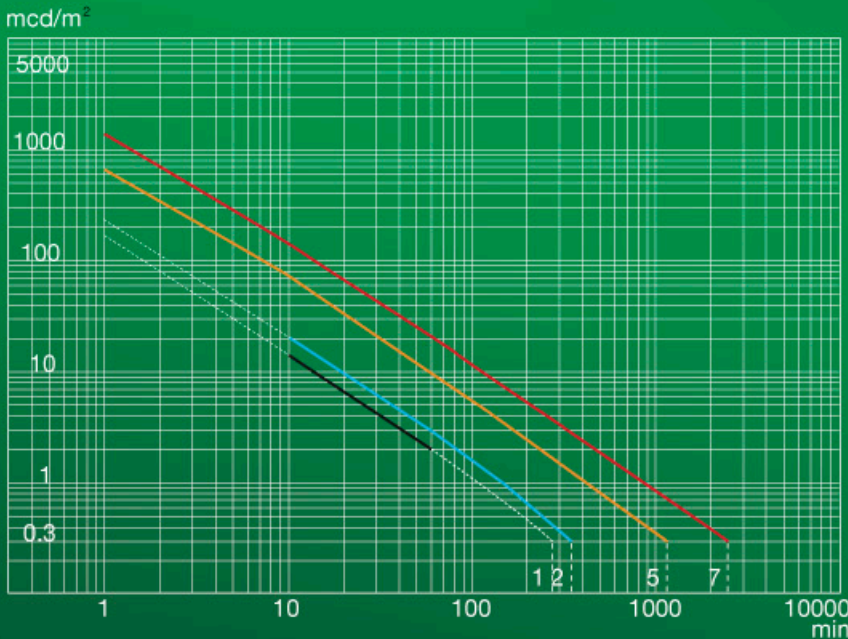
- Place on floors, walls and stairs
- Immediately indicates the way out
- Helps warn of hazards that could hinder a safe exit

Industry Standards

Photoluminescent products are regulated by various industry standards, such as PSPA, IMO, DIN, NYC, and others. One of the most widely referred to standards is PSPA (Photoluminescent Safety Product Association), which specifies practices for the installation of photoluminescent Emergency Wayfinding Guidance Systems for use in public, industrial and commercial buildings.

PSPA also classifies different classes of photoluminescent materials based on their glow intensities and durations. Many urban cities have taken steps to promote and/or regulate the use of photoluminescent products. Since the 9/11 terrorist incident, New York City has issued NYC local law 26, Reference Standard 6-1 and 6-1A. This regulation is a revision to the city's building code that requires all Class E commercial properties that are 75 feet (23 meters) or taller to retrofit their

emergency stairwells with photoluminescent markings and signage on or before July 1, 2006. Beijing local government has also laid down a new standard, Fire Safety Signs Installation Standard (DBJ01-611-2002), which specifies the use of photoluminescent products as safety egress identification. The Singapore government has also issued project tenders to illuminate evacuation routes for residential buildings and expressways using photoluminescent products.



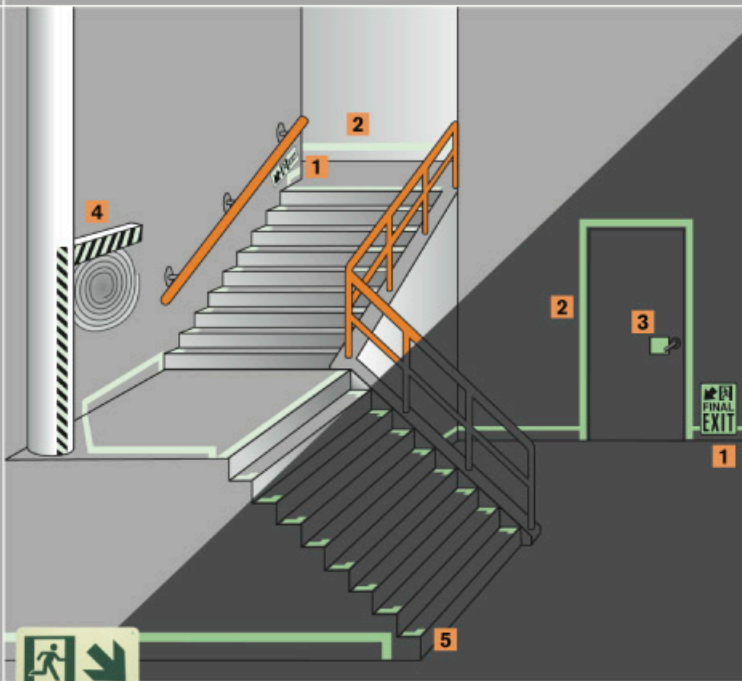
- BradyGlo™ Standard - Up to 3 times Better than IMO/DIN
- BradyGlo™ Plus - Up to 7 times Better than IMO/DIN
- 2 DIN 67510
- 1 IMO A.752

BradyGlo™ products meet or exceed these standards:

- NFPA 101 Life Safety Code
- NFPA 170
- ASTM E 2072-00 / E 2073-02 / E 2030-20
- SATM E 162 / E 648 / E 662 / SMP 800C
- IMO Resolution A. 752(18)
- ISO 15370
- PSPA Standard 002 (Part 2 1993, Class A Rev. 2: 09/99)
- DIN 67 510 Parts 1-4
- OSHA 1910.37

Note: Please check with your Brady Representative for specific industrial compliances

Product Portfolio



BradyGlo™ photoluminescent products are specifically engineered to give you the right configurations for code compliance while offering fast, easy installation and unsurpassed durability. Our complete product line also includes both self-adhesive and aluminum-backed materials to accommodate different building surfaces and application methods.



1 Directional Safety Guidance Signs

2 High Intensity Tape

3 Door Hardware Markers

4 High Intensity Hazard Tape

5 L-Shaped Stair Markers

L-Shaped Stair Markers



■ L-Shaped stair markers are recommended to illuminate edges and sides of each step.

PRODUCT NAME	CAT#	MATERIAL DESCRIPTION	SIZE	QTY/PACK
* L-Shaped Stair Markers	81736	B-875 Anti-Slip Aluminum-Backed	9 inch x 3 inch (22.9cm x 7.6cm)	56 Marker (28 right / 28 left)

* Apply with a construction grade adhesive, epoxy or rivet.



Hazard & Pre-printed Tape



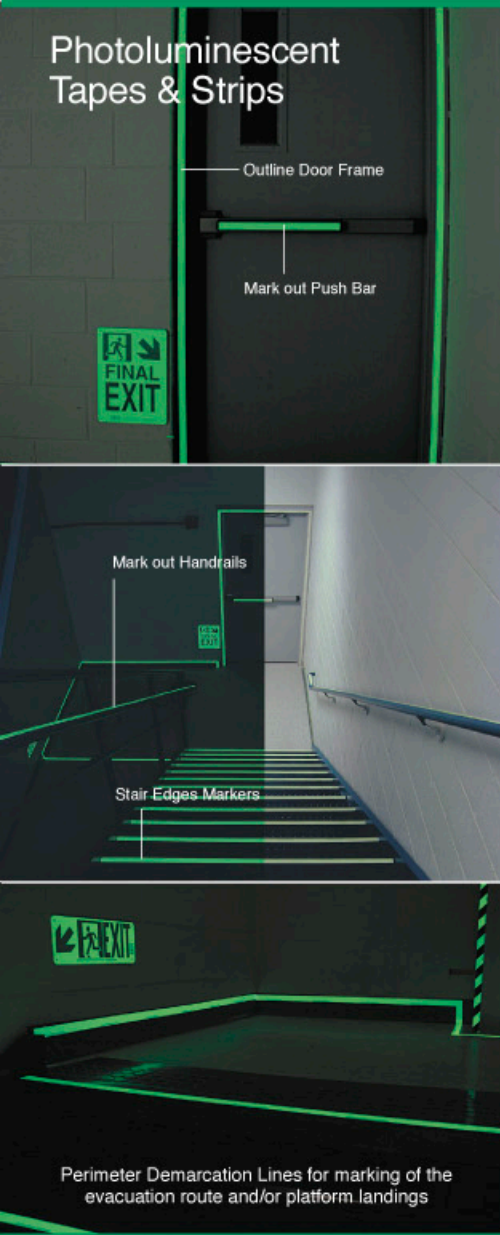
■ Obstacles that protrude into the egress path--such as standpipes, hose cabinets, wall projections and restricted height areas are required to be outlined with photoluminescent hazard tape.

PRODUCT NAME	CAT#	MATERIAL DESCRIPTION	SIZE	QTY/PACK
High Intensity Hazard Tape	81869	B-523 Self-Sticking Adhesive	1 inch x 50 feet (2.5cm x 15.2m)	1 Roll
High Intensity Hazard Tape (Value Pack)	81870	B-523 Self-Sticking Adhesive	1 inch x 250 feet (2.5cm x 76.2m)	1 Roll
V-Style Tape (2" width)	90971	B-324 Self-Sticking Polyester	2 inch x 5 yards (5.1cm x 4.6m)	1 Roll
V-Style Tape (3" width)	90972	B-324 Self-Sticking Polyester	3 inch x 5 yards (7.6cm x 4.6m)	1 Roll
Arrow-Style Tape (2" width)	90973	B-324 Self-Sticking Polyester	2 inch x 5 yards (5.1cm x 4.6m)	1 Roll
Arrow-Style Tape (3" width)	90974	B-324 Self-Sticking Polyester	3 inch x 5 yards (7.6cm x 4.6m)	1 Roll



Illustrated images might differ from actual products
Please check with your Brady's representative for other design variations

Photoluminescent Tapes & Strips



- The tops and sides of the door frames of all intermediate and final exit doors should be marked with continuous photoluminescent high intensity tape.
- Handrails should be lined with photoluminescent high intensity tape for easy identification in the dark.
- Step markers, as continuous photoluminescent strips, are recommended on the entire horizontal leading edges of stair steps or platform landings.
- Perimeter demarcation lines, to outline the egress path by providing low-location photoluminescent lines on both sides of the path, are recommended on either the floor or the wall.

PRODUCT NAME	CAT#	MATERIAL DESCRIPTION	SIZE	QTY/PACK
High Intensity Tape	81873	B-523 Self-Sticking Adhesive	1 inch x 50 feet (2.5cm x 15.2m)	1 Roll
High Intensity Tape (Value Pack)	81874	B-523 Self-Sticking Adhesive	1 inch x 250 feet (2.5cm x 76.2m)	1 Roll
*Aluminum-Backed High Intensity Tape	81706	B-861 Aluminum-Backed	1 inch x 50 feet (2.5cm x 15.2m)	1 Roll
*Aluminum-Backed High Intensity Tape (Value Pack)	81707	B-861 Aluminum-Backed	1 inch x 250 feet (2.5cm x 76.2m)	1 Roll
*Anti-Slip High Intensity Tape on Aluminum	81731	B-875 Anti-Slip Aluminum-Backed	1 inch x 50 feet (2.5cm x 15.2m)	1 Roll
*Anti-Slip High Intensity Tape on Aluminum (Value Pack)	81732	B-875 Anti-Slip Aluminum-Backed	1 inch x 250 feet (2.5cm x 76.2m)	1 Roll



* Apply with a construction grade adhesive epoxy or rivet

Die-Cut Markers



- Door handle markers are recommended for all intermediate and final exit doors for easy location of door handles in the dark.
- Dot/Arrows/Footprint floor markings are recommended for continuous outline of the egress path.

PRODUCT NAME	CAT#	MATERIAL DESCRIPTION	SIZE	QTY/PACK
Door handle marker	81853	B-523 Self-Sticking Adhesive	4.13 inch x 4.13 inch (10.5cm x 10.5cm)	5 Marker
Footprint (LEFT)	55358	B-324 Self-Sticking Vinyl	12 inch 30.5 cm	1 Marker
Footprint (RIGHT)	55359	B-324 Self-Sticking Vinyl	12 inch 30.5 cm	1 Marker
Photoluminescent Dots	58315	B-324 Self-Sticking Vinyl	2 inch diameter 5.1 cm	100 Marker
Photoluminescent Arrows	93275	B-324 Self-Sticking Vinyl	3 inch 7.6 cm	100 Marker



Emergency & Directional Signs



Directional and door signs are required for the following:

- Doors opening to exit passageways
- Stairwell exits
- Exit doors opening to the street level lobby
- Final exit doors leading directly to the outside of a building
- Directional indications along egress path
- "Not an Exit" signs for doors leading to dead ends such as mechanical rooms or storage closets

PRODUCT NAME	CAT#	MATERIAL DESCRIPTION	SIZE	QTY/PACK
* EXIT sign with running man	81924	B-552 Aluminum-Backed	5 inch x 14 inch (12.7cm x 35.6cm)	10 Sign
* EXIT sign with running man & RIGHT pointing arrow	81809	B-552 Aluminum-Backed	5 inch x 14 inch (12.7cm x 35.6cm)	10 Sign
* EXIT sign with running man & LEFT pointing arrow	81797	B-552 Aluminum-Backed	5 inch x 14 inch (12.7cm x 35.6cm)	10 Sign
* EXIT THROUGH LOBBY sign with RIGHT pointing arrow	81825	B-552 Aluminum-Backed	7 inch x 18 inch (17.8cm x 45.7cm)	10 Sign
* EXIT THROUGH LOBBY sign with LEFT pointing arrow	81829	B-552 Aluminum-Backed	7 inch x 18 inch (17.8cm x 45.7cm)	10 Sign
* FINAL EXIT sign	81726	B-552 Aluminum-Backed	14 inch x 10 inch (35.6cm x 25.4cm)	10 Sign
* NOT AN EXIT sign	81885	B-552 Aluminum-Backed	10 inch x 7 inch (25.4cm x 17.8cm)	10 Sign



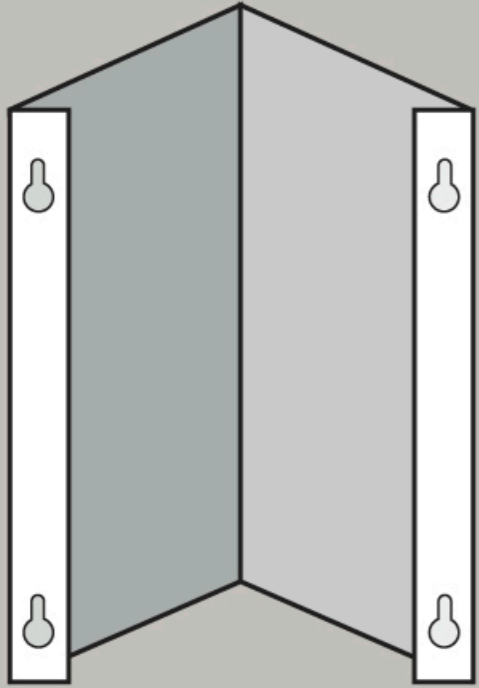
* Apply with a construction grade adhesive epoxy or rivet

- Photoluminescent EXIT signs require no professional installation, no wiring, no electricity, no backup power, and are literally maintenance free!

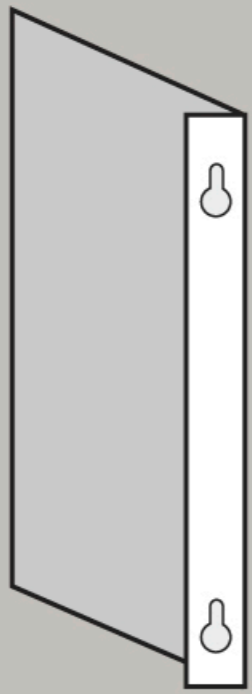
PRODUCT NAME	CAT#	MATERIAL DESCRIPTION	SIZE	QTY/PACK
Framed wall mount EXIT sign	90841	Green-painted steel frame with inserted photoluminescent panel	8.25 x 15.25 x 0.25 inch (21.0 x 38.7 x 0.6cm)	1 Sign
Frameless wall mount EXIT sign	87808	Green opaque letters on photoluminescent plastics panel	7.5 x 13 x 0.075 inch (19.1 x 33.0 x 0.2 cm)	1 Sign
Frameless wall mount REFLECTIVE EXIT sign	98453	Green reflective letters on photoluminescent plastics panel	7.5 x 13 x 0.075 inch (19.1 x 33.0 x 0.2 cm)	1 Sign



High Visibility V-Signs



V-Sign Back View



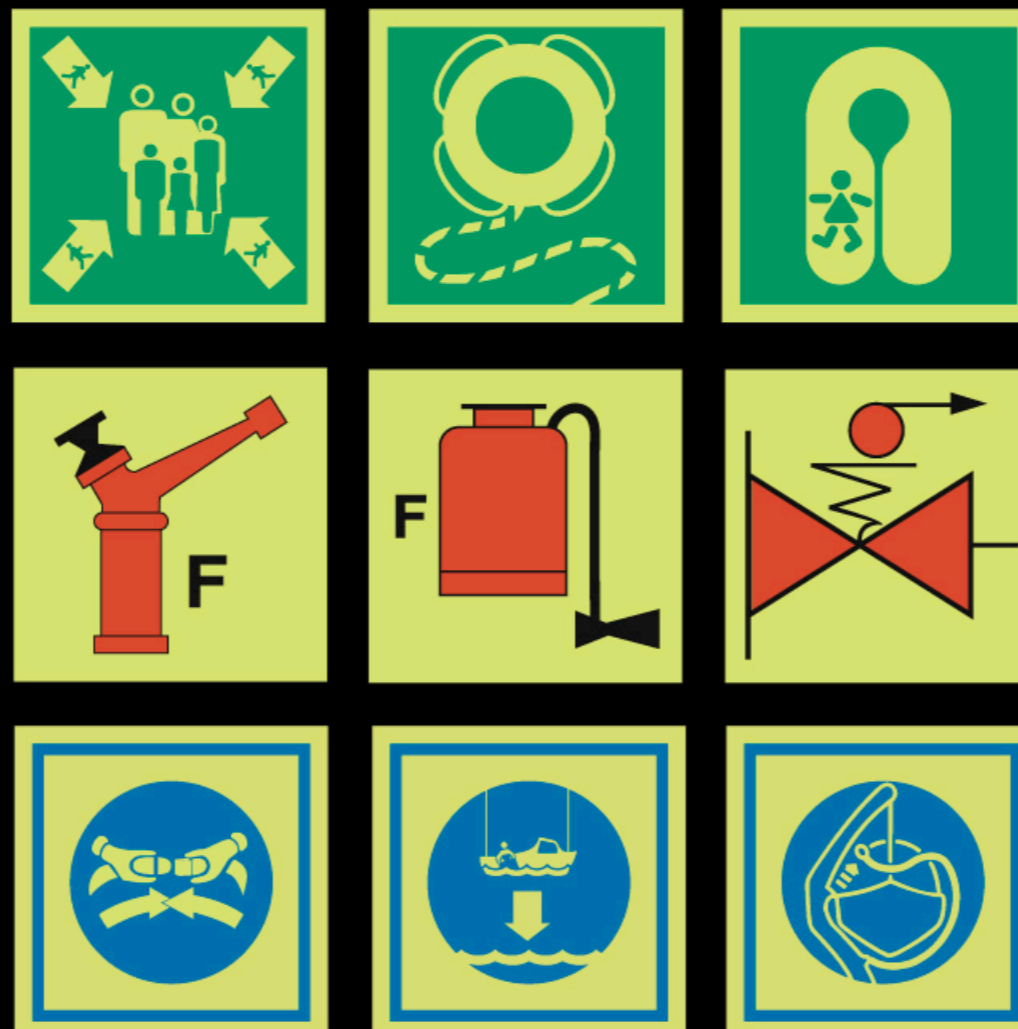
L-Sign Back View

- These highly visible signs are available in V-style (45°) or L-style (90°). Ask your Brady Representative for the full design range.



BradyGlo™ IMO Safety Signs

- Brady offers a comprehensive range of IMO signs in the 6 x 6 inch (15 x 15 cm) standard format. Brady's IMO signs exceed DIN and IMO standards by 3 to 7 times, respectively. Ask your Brady Representative for the full design range.



Identifying Needs For BradyGlo™

These questions will help you identify the need to implement BradyGlo™ in your facilities:

	Yes	No
1. Does your facility have an emergency lighting system that can illuminate the evacuation routes?	<input type="checkbox"/>	<input type="checkbox"/>
2. In dim or no light situations, are obstacles along your evacuation routes, such as water pipes, protruding pillars, low ceilings etc, clearly visible?	<input type="checkbox"/>	<input type="checkbox"/>
3. Are dead ends & entrances to storage rooms / engine rooms marked with "Not an Exit" signs that are visibly in the dark?	<input type="checkbox"/>	<input type="checkbox"/>
4. Are the following areas/ equipment marked out and accessible under dim/ no light condition?		
a. Exit door frame outline -----	<input type="checkbox"/>	<input type="checkbox"/>
b. Push-bar handle on emergency exit door -----	<input type="checkbox"/>	<input type="checkbox"/>
c. Platform landing edge -----	<input type="checkbox"/>	<input type="checkbox"/>
d. Stair steps -----	<input type="checkbox"/>	<input type="checkbox"/>
e. Handrail -----	<input type="checkbox"/>	<input type="checkbox"/>
f. Floor level indications -----	<input type="checkbox"/>	<input type="checkbox"/>
g. Location & evacuation route map -----	<input type="checkbox"/>	<input type="checkbox"/>
h. Fire-fighting equipment -----	<input type="checkbox"/>	<input type="checkbox"/>
i. First-aid kits -----	<input type="checkbox"/>	<input type="checkbox"/>
j. Emergency communication devices -----	<input type="checkbox"/>	<input type="checkbox"/>
k. Area of refuge -----	<input type="checkbox"/>	<input type="checkbox"/>
l. Assembly point -----	<input type="checkbox"/>	<input type="checkbox"/>
m. Final exit out of the facility -----	<input type="checkbox"/>	<input type="checkbox"/>
n. Door handle -----	<input type="checkbox"/>	<input type="checkbox"/>
5. Do your current EXIT light boxes / signs need periodic maintenance such as changing of fuses & light tubes?	<input type="checkbox"/>	<input type="checkbox"/>
6. Do you have 100% confidence that your current EXIT light boxes / signs are functional in emergency situations?	<input type="checkbox"/>	<input type="checkbox"/>
7. Can the backup power of your current EXIT light boxes / signs last more than 3 hours during power failure?	<input type="checkbox"/>	<input type="checkbox"/>
8. If there is a way to reduce the amount of time and money you need to spend on maintaining and operating your lighting system, are you interested to know more about it?	<input type="checkbox"/>	<input type="checkbox"/>
9. Have your facility ever fail a safety audit due to the absence or inadequacy of the emergency evacuation system?	<input type="checkbox"/>	<input type="checkbox"/>
10. Does your country / industry / company / have any regulation / industry standards/ common practice, specifying the need for safe and fail-proof evacuation system?	<input type="checkbox"/>	<input type="checkbox"/>

Contact your Brady Representative for more details &/ or discussion on BradyGlo™ solutions.

BradyGlo™ Asia Pacific Locations

www.bradycorp.com

www.bradyd.com

www.bradyd.com.sg

www.bradyc.com.cn

www.bradyc.co.jp

www.bradyc.co.kr



Australia
S4 - S6 Regents Park Estate
391 Park Rd Regents Park
NSW 2143 Australia
Tel: 61-2-8717 6300
Fax: 61-2-8717 2247

China - Beijing
Unit 8401 & 8402 Plant #8
3 Yong Chang Bei Road, BDA
Beijing 100176 China
Tel: 86-10-6788 7799
Fax: 86-10-6787 4555

China - Shanghai
1709-1716, POS Plaza 1600
Century Avenue, Pudong
Shanghai 200122 China
Tel: 86-21-6100 6588
Fax: 86-21-6100 6580

China - Shenzhen
Unit A&B 5th floor
1/F Technology Bldg
Gongye Road, Shekou Shenzhen
518067 China
Tel: 86-755-2683 7677
Fax: 86-755-2683 7652

China - Suzhou
Room 1108
XingHai International Plaza
200 XingHai Road
Suzhou Industrial Park
Suzhou 215021 China
Tel: 86-512-6256 3708
Fax: 86-512-6256 3705

China - Wuxi
No 229 Xing Chuang Ba Lu
Wuxi-Singapore Industrial Park
Wuxi City, Jiangsu 214028 China
Tel: 86-510-528 2222
Fax: 86-510-528 2666

Hong Kong
Unit 1802 18th floor CRE Centre
889 Cheung Sha Wan Road
Kowloon Hongkong
Tel: 852-2359 3149
Fax: 852-2359 3164

India
RMZ NXT, Campus 'A'
Unit 201, 2nd Floor
EPIP Zone, Mahadevapura
Whitefield, Bangalore - 560 066
Tel: 91-80-6658 2800
Fax: 91-80-4148 5680

Japan
TVP Building 3rd Floor
3-9-13 Moriya-Cho, Kanagawa-Ku
Yokohama, Kanagawa Japan 221 0022
Tel: 81-45-461 3600
Fax: 81-45-450 2380

Korea
3F, 18-31, Sanbon-dong,
Gunpo-city
Kyeonggi-do, Korea
Tel: 82-31-451 6600
Fax: 82-31-451 6673

Malaysia- Penang
47 Hilir Sungai Keluang 2
Taman Perindustrian
Bayan Lepas Fasa 4
11900 Penang Malaysia
Tel: 60-4-646 2700
Fax: 60-4-646 2500

Philippines
9 Narra Drive, Palmera Heights III
Valley Golf, Cainta Rizal
Philippines 1900
Tel: 63-2-658 2077
Fax: 63-2-658 2077

Singapore
1 Kaki Bukit Crescent
Singapore 416236
Tel: 65-6477 7261
Fax: 65-6383 2229

Taiwan
3F-5 No 229,
Fu Hsing 1st Road,
Kuei Shan Hsiang, Tao Yuan Hsien,
333 Taiwan
Tel: 886-3-327 7788
Fax: 886-3-327 7701

Thailand
61 The Seri Center Bldg.
3rd Fl. Room No. 3-455
Srinakarin Rd,
Nongborn, Praves,
Bangkok 10250 Thailand
Tel: 66-2746 0848
Fax: 66-2943 0777

Brady Worldwide Locations:

Australia, Belgium, Brazil,
Canada, China, Denmark,
England, France, Germany,
HongKong, Hungary, India,
Italy, Japan, Malaysia,
Mexico, Netherlands,
Norways, Philippines, Singapore,
Slovak Republic, South Korea,
Spain, Sweden, Taiwan, Thailand,
United Kingdom, United States.

Brady Corporation Asia Pte Ltd (Asia Pacific HQ)

1 Kaki Bukit Crescent
Singapore 416236
Tel: 65 6477 7261
Fax: 65 6383 2229
www.bradycorp.com