



**Automate your
identification**

Brady Print-and-ApPLY Machines

Automate your identification

If you're still using old technology, the time to get work done seems to disappear. Old processes slow you down, rework creates bottlenecks and errors can bring things to a full stop. Help keep things running smoothly by automating your identification.

Brady offers a family of print-and-apply machines that take the manual labeling process out of your hands so you can move through your work more efficiently and with less rework. With these modern automated machines, you can:

- **Increase productivity** — cut labeling time in half to keep your output numbers high
- **Reduce errors** — get sustainable, consistent identification without the rework
- **Make changes fast** — intuitive full-color touchscreen and user interface make changing settings easy

Choose your solution

Wraptor™ A6500 Wrap Printer Applicator

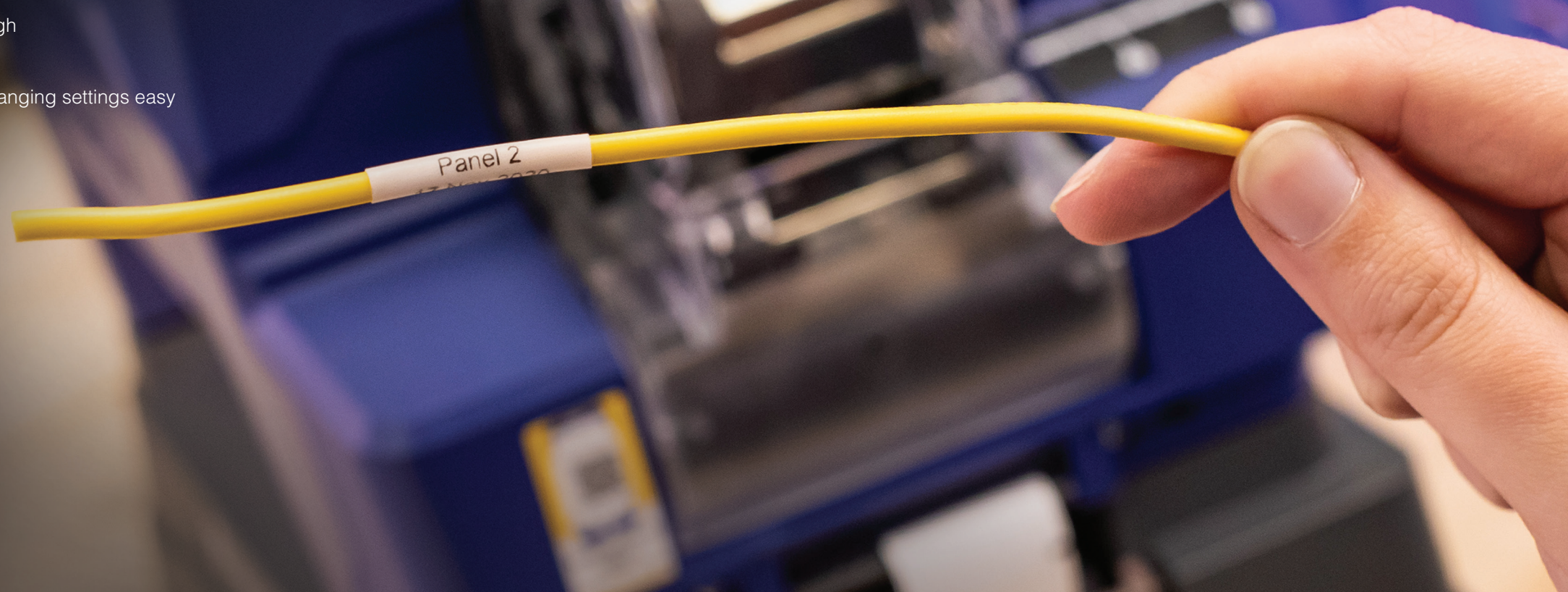
- Print and apply self-laminating labels in five seconds
- Automate time-consuming labeling tasks
- Identify wires from 0.060 to 0.600 in. diameter

Wraptor™ A6200 Wrap Printer Applicator

- Speed up production in cellular manufacturing
- Easy to transport, set up and operate
- Compact design fits well at workstations

BradyPrinter A5500 Flag Printer Applicator

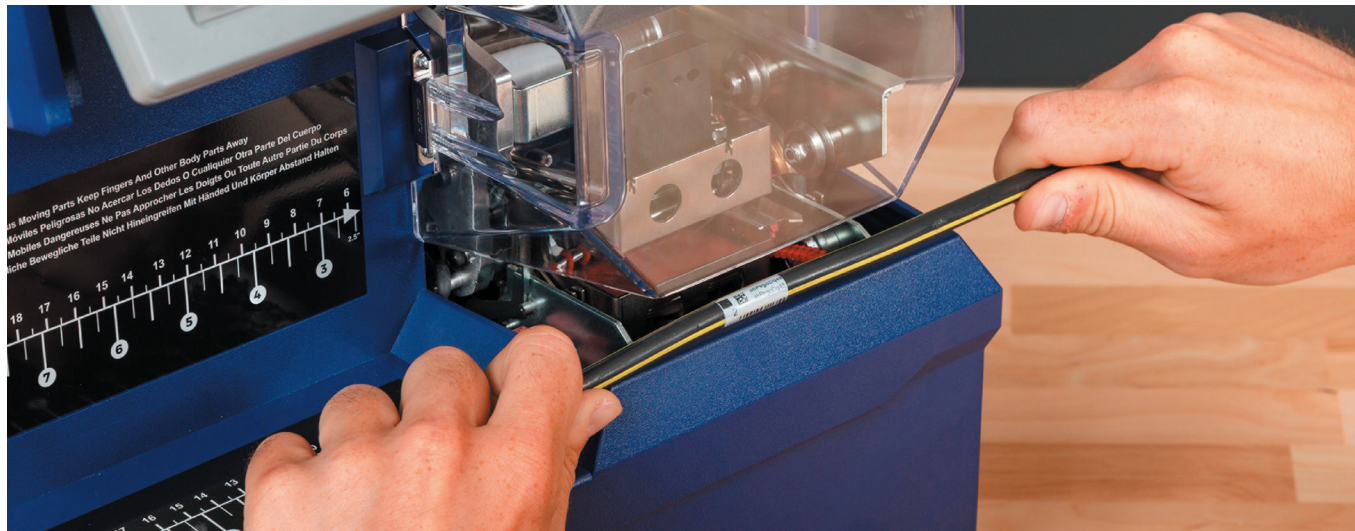
- Print and apply flags in five seconds
- Boost productivity with automated labeling
- Apply flag labels free of wrinkles, skew and edge mismatch



Wraprot™ A6500 Wrap Printer Applicator

In a contradictory way, our increasingly wireless world is requiring more and more wires and cables. Keep up the pace with the Wraprot A6500 Wrap Printer Applicator and wrap up your identification fast. This innovative machine allows you to print and apply your self-laminating wrap labels in as few as five seconds so you can efficiently move through your work. You also get:

- **Connectivity options** — three USB ports and 32GB of internal memory to store your commonly used jobs
- **Identification options** — identify wires and cables from 0.060 to 0.600 in. diameter with one machine



Part numbers and specifications

Catalog #
WRAPTOR-A6500 Wraprot A6500 Wrap Printer Applicator* with Brady Workstation Product and Wire ID Suite

Specifications			
Typical throughput	Up to 7000 labels / day max**	Ribbon and material installation	Labels: Loose roll, "thread-thru" required Ribbon: Loose roll, "thread-thru" required
Operational hours	24 hours a day / 7 days a week	Label creation and set up	Semi-automatic (select label part from software and label set up)
Print technology and color capabilities	Thermal Transfer; Monochrome	Connectivity options	Standard: USB, Ethernet 10/100
Print resolution	300 dpi	Compatible PC software	Labelmark™ Software, Brady Workstation
Max print width	2.000 in.	PC connect or stand alone operation	PC connect or stand alone
Media widths	0.500 in., 1.000 in., 2.000 in.	Integration	Ability to integrate the A6500 with industry-leading wire processing automation systems
Minimum label dimension	0.500 in. W x 0.750 in. L		

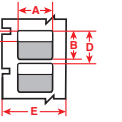
* Printer includes print driver, USB cable, USB flash drive, stylus, product license key for Brady Workstation Product and Wire ID Suite, roll of WRAP-4-427, roll of R4302 ribbon. **For in-line cut and strip applications:** Contact Brady at 1-888-272-3946. Special restrictions apply.
** Not to exceed an annual output of 100,000 labels.

Wraprot A6500 print ribbons (1.000 in. core, ink side out)

Ribbon series	Catalog #	Size inch x foot (mm x m)	Color
R4300 Wax / Resin Strong environmental resistance against smearing and chemicals. Also, reliable, sharp-edge print quality to maximize barcode readability.	R4311	1.000 x 984 (25.4 x 299.9)	Black
	R4306	1.570 x 984 (39.8 x 299.9)	Black
	R4302	2.360 x 984 (59.9 x 299.9)	Black

B-417 High Adhesion Self-Laminating Vinyl Wire material

Color: White / Clear Finish: Matte

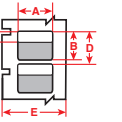


Self-laminating wire markers with **extra-strong adhesive** make them ideal for small diameter wires. This material features a white printable area with a clear "tail" that wraps around marker. Tail serves as overlamine to protect the print. Superior resistance to abrasion, solvents, water, oil and dirt.

Catalog #	Wire gauge (in. - in.) dia.	Label width A inch (mm)	Label height B inch (mm)	Vert. repeat D inch (mm)	Web width E inch (mm)	Printable area F inch (mm)	Labels per row	Labels per pkg	Rec. ribbon
WRAP-1-417	18-22g; 0.06 - 0.080	0.500 (12.7)	0.750 (19.1)	0.875 (22.2)	0.790 (20.1)	0.375 (9.5)	1	6800	R4311
WRAP-2-417	12-18g; 0.08 - 0.159	1.000 (25.4)	1.000 (25.4)	1.125 (28.6)	1.290 (32.8)	0.375 (9.5)	1	5300	R4306
WRAP-3-417	10-14g; 0.159 - 0.199	1.000 (25.4)	1.250 (31.8)	1.375 (34.9)	1.290 (32.8)	0.500 (12.7)	1	4300	R4306
WRAP-11-417	6-14g; 0.159 - 0.279	0.500 (12.7)	1.500 (38.1)	1.625 (41.3)	0.790 (20.1)	0.500 (12.7)	1	3600	R4311
WRAP-4-417	6-14g; 0.159 - 0.279	1.000 (25.4)	1.500 (38.1)	1.625 (41.3)	1.290 (32.8)	0.500 (12.7)	1	3600	R4306
WRAP-12-417	6-14g; 0.159 - 0.279	2.000 (50.8)	1.500 (38.1)	1.625 (41.3)	2.290 (58.2)	0.500 (12.7)	1	3600	R4302
WRAP-10-417	1/0-8g; 0.239 - 0.438	1.000 (25.4)	2.250 (57.2)	2.375 (60.3)	1.290 (32.8)	0.750 (19.1)	1	2500	R4306
WRAP-5-417	1/0-8g; 0.239 - 0.517	1.000 (25.4)	2.500 (63.5)	2.625 (66.7)	1.790 (45.5)	0.750 (19.1)	1	2200	R4306
WRAP-6-417	3/1-6g; 0.318 - 0.597	2.000 (50.8)	3.000 (76.2)	3.125 (79.4)	2.290 (58.2)	1.000 (25.4)	1	1900	R4302

B-427 Self-Laminating Vinyl Wire material

Color: White / Clear Finish: Matte

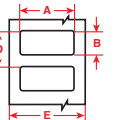


Self-laminating wire marker features white printable area with a clear "tail" that wraps around marker. Tail serves as overlamine to protect the print. Superior resistance to abrasion, solvents, water, oil and dirt.

Catalog #	Wire gauge (in. - in.) dia.	Label width A inch (mm)	Label height B inch (mm)	Vert. repeat D inch (mm)	Web width E inch (mm)	Printable area F inch (mm)	Labels per row	Labels per pkg	Rec. ribbon
WRAP-1-427	18-22g; 0.06 - 0.080	0.500 (12.7)	0.750 (19.1)	0.875 (22.2)	0.790 (20.1)	0.375 (9.5)	1	6800	R4311
WRAP-2-427	12-18g; 0.08 - 0.159	1.000 (25.4)	1.000 (25.4)	1.125 (28.6)	1.290 (32.8)	0.375 (9.5)	1	5300	R4306
WRAP-3-427	10-14g; 0.159 - 0.199	1.000 (25.4)	1.250 (31.8)	1.375 (34.9)	1.290 (32.8)	0.500 (12.7)	1	4300	R4306
WRAP-11-427	6-14g; 0.159 - 0.279	0.500 (12.7)	1.500 (38.1)	1.625 (41.3)	0.790 (20.1)	0.500 (12.7)	1	3600	R4311
WRAP-4-427	6-14g; 0.159 - 0.279	1.000 (25.4)	1.500 (38.1)	1.625 (41.3)	1.290 (32.8)	0.500 (12.7)	1	3600	R4306
WRAP-12-427	6-14g; 0.159 - 0.279	2.000 (50.8)	1.500 (38.1)	1.625 (41.3)	2.290 (58.2)	0.500 (12.7)	1	3600	R4302
WRAP-10-427	1/0-8g; 0.239 - 0.438	1.000 (25.4)	2.250 (57.2)	2.375 (60.3)	1.290 (32.8)	0.750 (19.1)	1	2500	R4306
WRAP-5-427	1/0-8g; 0.239 - 0.517	1.000 (25.4)	2.500 (63.5)	2.625 (66.7)	1.790 (45.5)	0.750 (19.1)	1	2200	R4306
WRAP-6-427	3/1-6g; 0.318 - 0.597	2.000 (50.8)	3.000 (76.2)	3.125 (79.4)	2.290 (58.2)	1.000 (25.4)	1	1900	R4302

B-499 Nylon Cloth material

Color: White Finish: Matte

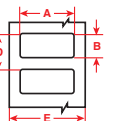


Nylon cloth with permanent adhesive allows labeling in environments with heat, cold, oil and dirt. Ideal for wire and cable marking.

Catalog #	Wire Gauge (in. - in.) dia.	Label width A inch (mm)	Label height B inch (mm)	Labels per row	Labels per pkg	Rec. ribbon
WRAP-7-499	10-22g; 0.060 - 0.199	0.500 (12.7)	0.750 (19.1)	1	4500	R4311
WRAP-13-499	6-14g; 0.159 - 0.279	1.000 (25.4)	1.000 (25.4)	1	4100	R4306
WRAP-8-499	2-14g; 0.159 - 0.438	1.000 (25.4)	1.500 (38.1)	1	2800	R4306
WRAP-9-499	3/0-8g; 0.212 - 0.597	2.000 (50.8)	2.000 (50.8)	1	2100	R4302

B-472 Polyimide Wirewrap material

Color: White Finish: Matte



Polyimide wire and cable wirewrap material specifically designed to self-extinguish and prevent flames from spreading. This material is ideal for wire and cable identification in extreme environments, particularly in the aerospace, defense and mass transit industries.

Catalog #	Wire gauge (in. - in.) dia.	Label width A inch (mm)	Label height B inch (mm)	Vert. repeat D inch (mm)	Web width E inch (mm)	Labels per row	Labels per pkg	Rec. ribbon
WRAP-1-472	10-14g; 0.159 - 0.199	0.750 (19.1)	0.500 (12.7)	0.875 (22.2)	0.790 (20.1)	1	6800	R4311
WRAP-6-472	3/0-8g; 0.212 - 0.597	2.000 (50.8)	3.000 (76.2)	3.125 (79.4)	2.290 (58.2)	1	1900	R4302



BRADY

Wraptor™ A6500

Warning/Attention: Moving Parts, Sharp Edges and Other Safety Hazards Apply.
Always Wear Safety Glasses and Avoid Eye Strain. Do Not Touch the Hot Surface.
Always Use Proper Lifting Techniques for the Operator. Use Proper Lifting Posture.
Warning: Callibration: Re-calibrate Tools. Use the Calibration Kit. Do Not Use the Calibration Kit.

Wraprotor™ A6200 Wrap Printer Applicator

Need greater flexibility when it comes to labeling? Easy. Get the Wraprotor™ A6200 Wrap Printer Applicator. It's an effective, automated device that prints and wraps, saving you both time and labor. Lightweight and compact, the A6200 travels easily to multiple stations in cellular manufacturing, offering high-value automation to boost productivity.

- **Efficient** — enables cellular manufacturing workflows; print and apply in fewer than seven seconds
- **Smaller footprint** — fits into tight spaces and can be moved easily



Part numbers and specifications

Catalog #	Description
A6200-NA-KIT	Wraprotor A6200 Wrap Printer Applicator* with Wi-Fi and Rewinder Kit
A6200-NA-WIFI	Wraprotor A6200 Wrap Printer Applicator* with Wi-Fi
A6200-REWINDER	Wraprotor A6200 material rewinder
A6200-SC	Wraprotor A6200 soft case
A6200-PS	Wraprotor A6200 AC adapter

Specifications			
Typical throughput	Up to 1000 labels / day max**	Ribbon and material installation	Labels: Loose roll, "thread-thru" required Ribbon: cartridge required
Operational hours	12 hours a day / 5 days a week	Label creation and set up	Semi-automatic (select label part from software and label set up)
Print technology and color capabilities	Thermal Transfer, Monochrome	Connectivity options	USB, Wi-Fi, Ethernet
Print resolution	300 dpi	Compatible PC software	Brady Workstation
Max print width	1.000 in.	PC connect or stand alone operation	PC connect or stand alone
Media widths	0.500 in., 1.000 in.	Minimum label dimension	0.500 in. W x 0.750 in. L

* Printer includes a product license key for Brady Workstation Product and Wire ID Suite, A62-R4300 ribbon, roll of A62-3-427, USB cable, Quick Start Guide, power cord and AC adapter. **For in-line cut and strip applications:** Contact Brady at 1-888-272-3946. Special restrictions apply.
** Not to exceed an annual output of 25,000 labels.

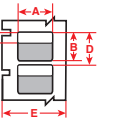
Wraprotor A6200 print ribbons (1.000 in. core, ink side out)

Ribbon series	Catalog #	Size inch x foot (mm x m)	Color
R4300 Wax / Resin Strong environmental resistance against smearing and chemicals. Also, reliable, sharp-edge print quality to maximize barcode readability.	A62-R4300	2.000 x 150 (50.8 x 45.7)	Black

B-417 High Adhesion Self-Laminating Vinyl Wire material

Color: White / Clear Finish: Matte

Self-laminating wire markers with extra-strong adhesive make them ideal for small diameter wires. This material features a white printable area with a clear "tail" that wraps around marker. Tail serves as overlamine to protect the print. Superior resistance to abrasion, solvents, water, oil and dirt.

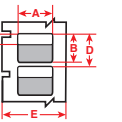


Catalog #	Wire gauge (in.- in.) dia.	Label width A inch (mm)	Label height B inch (mm)	Vert. repeat D inch (mm)	Web width E inch (mm)	Write on area F inch (mm)	Labels per row	Labels per pkg	Rec. ribbon
A62-1-417	0.060 - 0.120	0.500 (12.7)	0.750 (19.1)	0.875 (22.2)	1.312 (33.3)	0.375 (9.5)	1	750	A62-R4300
A62-15-417	0.060 - 0.120	1.000 (25.4)	0.750 (19.1)	0.875 (22.2)	1.312 (33.3)	0.375 (9.5)	1	750	A62-R4300
A62-14-417	0.120 - 0.240	0.500 (12.7)	1.250 (31.8)	1.375 (34.9)	1.312 (33.3)	0.500 (12.7)	1	450	A62-R4300
A62-3-417	0.120 - 0.240	1.000 (25.4)	1.250 (31.8)	1.375 (34.9)	1.312 (33.3)	0.500 (12.7)	1	450	A62-R4300

B-427 Self-Laminating Vinyl Wire material

Color: White / Clear Finish: Matte

Self-laminating wire marker features white printable area with a clear "tail" that wraps around marker. Tail serves as overlamine to protect the print. Superior resistance to abrasion, solvents, water, oil and dirt.

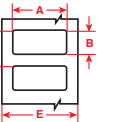


Catalog #	Wire gauge (in.- in.) dia.	Label width A inch (mm)	Label height B inch (mm)	Vert. repeat D inch (mm)	Web width E inch (mm)	Write on area F inch (mm)	Labels per row	Labels per pkg	Rec. ribbon
A62-1-427	0.060 - 0.120	0.500 (12.7)	0.750 (19.1)	0.875 (22.2)	1.312 (33.3)	0.375 (9.5)	1	850	A62-R4300
A62-15-427	0.060 - 0.120	1.000 (25.4)	0.750 (19.1)	0.875 (22.2)	1.312 (33.3)	0.375 (9.5)	1	850	A62-R4300
A62-14-427	0.120 - 0.240	0.500 (12.7)	1.250 (31.8)	1.375 (34.9)	1.312 (33.3)	0.500 (12.7)	1	500	A62-R4300
A62-3-427	0.120 - 0.240	1.000 (25.4)	1.250 (31.8)	1.375 (34.9)	1.312 (33.3)	0.500 (12.7)	1	500	A62-R4300

B-499 Nylon Cloth material

Color: White Finish: Matte

Nylon cloth with permanent adhesive allows labeling in environments with heat, cold, oil and dirt. Ideal for wire and cable marking.



Catalog #	Wire gauge (in.- in.) dia.	Label width A inch (mm)	Label height B inch (mm)	Vert. repeat D inch (mm)	Web width E inch (mm)	Write on area B inch (mm)	Labels per row	Labels per pkg	Rec. ribbon
A62-7-499	0.060 - 0.240	0.500 (12.7)	0.750 (19.1)	0.875 (22.2)	1.312 (33.3)	0.750 (19.1)	1	600	A62-R4300
A62-15-499	0.060 - 0.240	1.000 (25.4)	0.750 (19.1)	0.875 (22.2)	1.312 (33.3)	0.750 (19.1)	1	600	A62-R4300
A62-16-499	0.130 - 0.250	0.500 (12.7)	1.000 (25.4)	1.125 (28.6)	1.312 (33.3)	1.000 (25.4)	1	450	A62-R4300
A62-13-499	0.130 - 0.250	1.000 (25.4)	1.000 (25.4)	1.125 (28.6)	1.312 (33.3)	1.000 (25.4)	1	450	A62-R4300

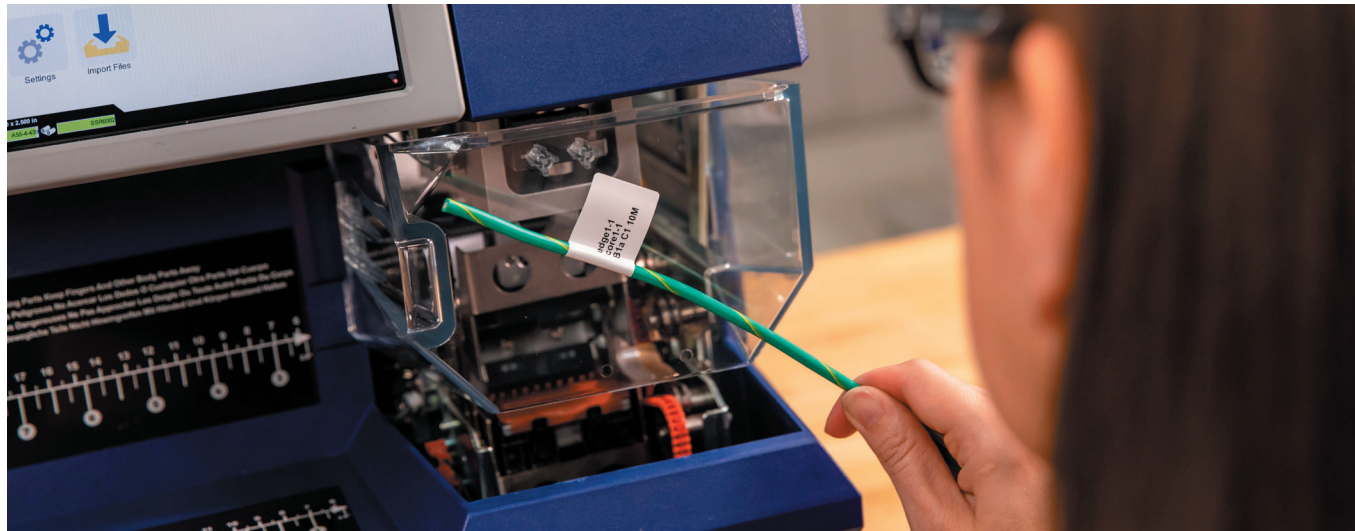


FREE UP YOUR FLAGGING TIME

BradyPrinter A5500 Flag Printer Applicator

Even though wire diameters are decreasing, the data needed to identify them isn't. Adding a flag gives you the room for the data you need, but it can also increase your identification time. Free up your flagging time with the BradyPrinter A5500 Flag Printer Applicator. With this forward-thinking machine, you can print and apply your flags in as few as five seconds. You'll also improve other processes, including:

- **Consistent application** — labels are applied evenly without wrinkles, skew or edge mismatch, so there's less rework
- **Connectivity options** — get your data to your machine in a variety of ways, including Wi-Fi
- **Reduce waste** — print and apply serialized labels as you go without having to go back and reprint a full batch if an error occurs



Part numbers and specifications

Catalog #	Product Description
A5500-NA-WIFI	BradyPrinter Flag Printer Applicator* with Wi-Fi and Brady Workstation Product and Wire ID Suite

Specifications			
Typical throughput	Up to 7000 labels / day max**	Ribbon and material installation	Labels: Loose roll, "thread-thru" required Ribbon: Loose roll, "thread-thru" required
Operational hours	24 hours a day / 7 days a week	Label creation and set up	Semi-automatic (select label part from software and label set up)
Print technology and color capabilities	Thermal Transfer, Monochrome	Connectivity options	Standard: USB, Ethernet 10/100
Print resolution	300 dpi	Compatible PC software	Brady Workstation
Max print width	2.000 in.	PC connect or stand alone operation	PC connect or stand alone
Media widths	1.000 to 2.000 in.	Minimum label dimension	1.000 in. width

* Printer includes print driver, USB cable, USB flash drive, power cable, product license key for Brady Workstation Product and Wire ID Suite, roll of A55-4-483, roll of SSR6002 ribbon. **For in-line cut and strip applications:** Contact Brady at 1-888-272-3946. Special restrictions apply.
** Not to exceed an annual output of 100,000 labels.

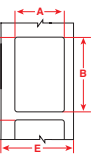
BradyPrinter A5500 print ribbons (0.830 in. core, ink side out)

Ribbon series	Catalog #	Size inch x foot (mm x m)	Color
R4300 Strong environmental resistance against smearing and chemicals.	SSR4306	1.575 x 984 (40.0 x 299.9)	Black
	SSR4302	2.360 x 984 (59.9 x 299.9)	Black
	SSR6006	1.575 x 984 (40.0 x 299.9)	Black
R6000 Halogen free, high density, excellent solvent resistance, high heat resistance, super scratch resistance.	SSR6002	2.360 x 984 (59.9 x 299.9)	Black
	SSR6102	2.360 x 984 (59.9 x 299.9)	Black

B-424 Paper material

Color: White Finish: Matte

Paper labels with permanent rubber adhesive provide good contrast and smear resistance for thermal transfer and barcode printing applications.

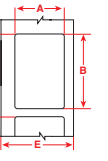


Catalog #	Wire gauge (in. - in.) dia.	Label width A inch (mm)	Label height B inch (mm)	Vert. repeat D inch (mm)	Web width E inch (mm)	Labels per row	Rec. ribbon
A55-1-424	0.060-0.190	1,000 (25.4)	1,500 (38.1)	1,625 (41.3)	1,290 (32.8)	1	SSR6102, SSR4302, SSR4306
A55-2-424	0.060-0.190	1,500 (38.1)	1,500 (38.1)	1,625 (41.3)	1,790 (45.5)	1	SSR6102, SSR4302, SSR4306
A55-3-424	0.060-0.190	2,000 (50.8)	1,500 (38.1)	1,625 (41.3)	2,290 (58.2)	1	SSR6102, SSR4302, SSR4306
A55-13-424	0.060-0.250	2,000 (50.8)	2,000 (50.8)	2,125 (54.0)	2,290 (58.2)	1	SSR6102, SSR4302, SSR4306
A55-11-424	0.060-0.320	1,000 (25.4)	2,000 (50.8)	2,125 (54.0)	1,290 (32.8)	1	SSR6102, SSR4302, SSR4306
A55-5-424	0.130-0.190	1,500 (38.1)	2,500 (63.5)	2,625 (66.7)	1,790 (45.5)	1	SSR6102, SSR4302, SSR4306
A55-4-424	0.130-0.320	1,000 (25.4)	2,500 (63.5)	2,625 (66.7)	1,290 (32.8)	1	SSR6102, SSR4302, SSR4306
A55-6-424	0.130-0.380	2,000 (50.8)	2,500 (63.5)	2,625 (66.7)	2,290 (58.2)	1	SSR6102, SSR4302, SSR4306
A55-12-424	0.320-0.600	1,000 (25.4)	3,000 (76.2)	3,125 (79.4)	1,290 (32.8)	1	SSR6102, SSR4302, SSR4306
A55-7-424	0.320-0.600	2,000 (50.8)	3,000 (76.2)	3,125 (79.4)	2,290 (58.2)	1	SSR6102, SSR4302, SSR4306

B-425 Polypropylene material

Color: White Finish: Matte

Ideal for labeling applications requiring excellent solvent resistance and print performance.

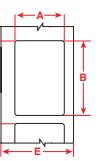


Catalog #	Wire gauge (in. - in.) dia.	Label width A inch (mm)	Label height B inch (mm)	Vert. repeat D inch (mm)	Web width E inch (mm)	Labels per row	Rec. ribbon
A55-1-425	0.060-0.190	1,000 (25.4)	1,500 (38.1)	1,625 (41.3)	1,290 (32.8)	1	SSR4306, SSR4302
A55-2-425	0.060-0.190	1,500 (38.1)	1,500 (38.1)	1,625 (41.3)	1,790 (45.5)	1	SSR4306, SSR4302
A55-3-425	0.060-0.190	2,000 (50.8)	1,500 (38.1)	1,625 (41.3)	2,290 (58.2)	1	SSR4306, SSR4302
A55-11-425	0.060-0.250	1,000 (25.4)	2,000 (50.8)	2,125 (54.0)	1,290 (32.8)	1	SSR4306, SSR4302
A55-13-425	0.060-0.320	2,000 (50.8)	2,000 (50.8)	2,125 (54.0)	2,290 (58.2)	1	SSR4306, SSR4302
A55-5-425	0.130-0.320	1,500 (38.1)	2,500 (63.5)	2,625 (66.7)	1,790 (45.5)	1	SSR4306, SSR4302
A55-6-425	0.130-0.320	2,000 (50.8)	2,500 (63.5)	2,625 (66.7)	2,290 (58.2)	1	SSR4306, SSR4302
A55-4-425	0.130-0.380	1,000 (25.4)	2,500 (63.5)	2,625 (66.7)	1,290 (32.8)	1	SSR4306, SSR4302
A55-7-425	0.320-0.500	2,000 (50.8)	3,000 (76.2)	3,125 (79.4)	2,290 (58.2)	1	SSR4306, SSR4302
A55-12-425	0.320-0.600	1,000 (25.4)	3,000 (76.2)	3,125 (79.4)	1,290 (32.8)	1	SSR4306, SSR4302

B-437 Polyvinylflouride material

Color: White Finish: Matte

Topcoated polyvinylflouride material is used most frequently in wire and cable identification applications where self-extinguishing features are required.

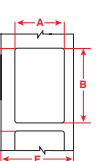


Catalog #	Wire gauge (in. - in.) dia.	Label width A inch (mm)	Label height B inch (mm)	Vert. repeat D inch (mm)	Web width E inch (mm)	Labels per row	Rec. ribbon
A55-1-437	0.060-0.190	1,000 (25.4)	1,500 (38.1)	1,625 (41.3)	1,290 (32.8)	1	SSR4306, SSR4302
A55-2-437	0.060-0.190	1,500 (38.1)	1,500 (38.1)	1,625 (41.3)	1,790 (45.5)	1	SSR4306, SSR4302
A55-3-437	0.060-0.190	2,000 (50.8)	1,500 (38.1)	1,625 (41.3)	2,290 (58.2)	1	SSR4306, SSR4302
A55-11-437	0.060-0.250	1,000 (25.4)	2,000 (50.8)	2,125 (54.0)	1,290 (32.8)	1	SSR4306, SSR4302
A55-13-437	0.060-0.320	2,000 (50.8)	2,000 (50.8)	2,125 (54.0)	2,290 (58.2)	1	SSR4306, SSR4302
A55-5-437	0.130-0.380	1,500 (38.1)	2,500 (63.5)	2,625 (66.7)	1,790 (45.5)	1	SSR4306, SSR4302
A55-6-437	0.130-0.380	2,000 (50.8)	2,500 (63.5)	2,625 (66.7)	2,290 (58.2)	1	SSR4306, SSR4302
A55-4-437	0.130-0.500	1,000 (25.4)	2,500 (63.5)	2,625 (66.7)	1,290 (32.8)	1	SSR4306, SSR4302
A55-12-437	0.320-0.600	1,000 (25.4)	3,000 (76.2)	3,125 (79.4)	1,290 (32.8)	1	SSR4306, SSR4302
A55-7-437	0.320-0.600	2,000 (50.8)	3,000 (76.2)	3,125 (79.4)	2,290 (58.2)	1	SSR4306, SSR4302

B-483 ToughBond Polyester material

Color: White Finish: Gloss

Ultra-aggressive polyester can be applied to powder-coated, smooth, textured or irregular surfaces. UL approved; CSA accepted. Service temperature of -40 to 248° F (-40 to 120° C).



Catalog #	Wire gauge (in. - in.) dia.	Label width A inch (mm)	Label height B inch (mm)	Vert. repeat D inch (mm)	Web width E inch (mm)	Labels per row	Rec. ribbon
A55-10-483	0.060-0.190	0,500 (12.7)	1,500 (38.1)	1,625 (41.3)	0,790 (20.1)	1	SSR6002
A55-14-483	0.060-0.190	0,750 (19.1)	1,500 (38.1)	1,625 (41.3)	1,040 (26.4)	1	SSR6002
A55-1-483	0.060-0.190	1,000 (25.4)	1,500 (38.1)	1,625 (41.2)	1,290 (32.7)	1	SSR6006
A55-2-483	0.060-0.190	1,500 (38.1)	1,500 (38.1)	1,625 (41.2)	1,790 (45.4)	1	SSR6006
A55-3-483	0.060-0.190	2,000 (50.8)	1,500 (38.1)	1,625 (41.2)	2,290 (58.2)	1	SSR6002
A55-11-483	0.060-0.250	1,000 (25.4)	2,000 (50.8)	2,125 (54.0)	1,290 (32.8)	1	SSR6002
A55-13-483	0.060-0.250	2,000 (50.8)	2,000 (50.8)	2,125 (54.0)	2,290 (58.2)	1	SSR6002
A55-4-483	0.130-0.500	1,000 (25.4)	2,500 (63.5)	2,625 (66.6)	1,290 (32.7)	1	SSR6006
A55-5-483	0.130-0.500	1,500 (38.1)	2,500 (63.5)	2,625 (66.6)	1,790 (45.4)	1	SSR6006
A55-6-483	0.130-0.500	2,000 (50.8)	2,500 (63.5)	2,625 (66.6)	2,290 (58.2)	1	SSR6002
A55-12-483	0.320-0.600	1,000 (25.4)	3,000 (76.2)	3,125 (79.4)	1,290 (32.8)	1	SSR6002
A55-7-483	0.500-0.600	2,000 (50.8)	3,000 (76.2)	3,125 (79.3)	2,290 (58.2)	1	SSR6002



Design, print and manage your labeling with software

Brady Workstation Desktop Software

Design and print labels seamlessly with Brady Workstation software suites. Each includes specialized apps that can be used for a variety of common industry-related tasks. Along with popular time-saving features like auto-formatting and built-in templates, Brady Workstation software features an intuitive interface that integrates easily with the work you do.



Other apps and suites are available:

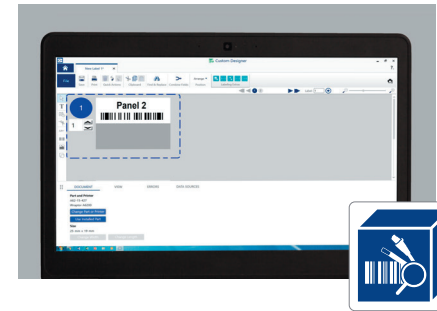


1. Go to **Workstation.BradyID.com**.



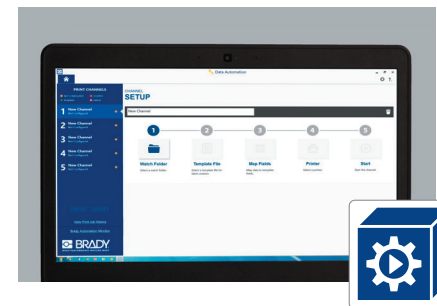
2. Fill the workstation with the apps and suites you want.

For more information on Brady Workstation apps and suites, go to Workstation.BradyID.com.



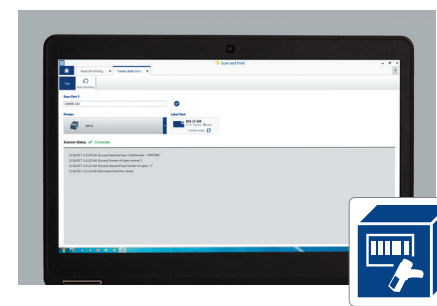
Product and Wire Identification Suite (software included)

Get faster, more efficient labeling for wires and cables. Use these apps to create labels with text, graphics and custom formatting. Or, make labels by serializing and importing pre-existing data.



Automation Suite

Save time and labor by fully automating your label printing. These apps make it easy to set up templates and import data, which turns your label creation process into an automated and error-free one.



Scan and Print Suite

Quickly populate data in label templates with these apps. Just use a barcode scanner, keyboard or custom script. Ideal for labeling off-of-work orders and re-labeling supplied parts for product assembly.

edge 1-9
core 9-1
B1b C1 15M

edge 1-9
core 9-1
B1b C1 15M

edge 1-9
core 9-1
B1b C1 15M

edge 1-9
core 9-1
B1b C1 15M

edge 1-9
core 9-1
B1b C1 15M

edge 1-9
core 9-1
B1b C1 15M

We identify and protect people, products and places.

For more information or to learn more about our innovative products, visit BradyID.com or call 1-888-272-3946.



Y4830305

MS4830305

USA
Customer Service: 1-888-272-3946
BradyID.com

Canada
Customer Service: 1-800-263-6179
BradyCanada.ca

Mexico
Customer Service: 1-800-262-7777
Inside Sales: 1-800-262-7777 ext 177
BradyID.com.mx