



**Fast and Simple  
Label Creation  
Right at your fingertips**

**BradyPrinter S3100  
Sign & Label Printer**

# Walk up, create and print

Sign and label printing just got easier with the BradyPrinter S3100. This easy-to-use, stand-alone printer is designed to meet a variety of your facility identification needs, helping you save time on labeling so you can get back to other tasks.

## Easily complete facility-wide identification with:

- **Do-it-yourself label creation.** Create the labels you need, when you need them — without the wait.
- **Walk up and print ease of use.** Ideal for multi-user areas in your facility, anyone can simply walk up, create labels and print right on the spot.
- **Print smart technology.** Label creation is even faster with quick setup and print speeds.



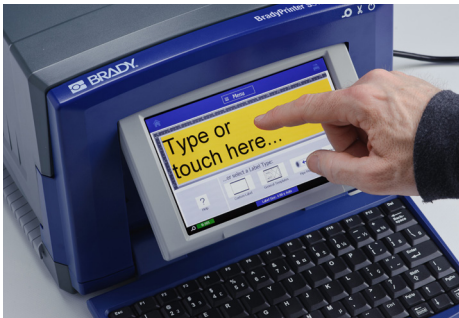
**BradyPrinter S3100**  
SIGN & LABEL PRINTER





## Time and cost savings with on-demand printing

Proper identification can greatly reduce the occurrence of accidents in your facility. But, getting pre-printed signs and labels can be time-consuming and costly. Free yourself from the constraints of pre-printed identification products — get the labels you need when you need them, customized to your specifications.



## Easy, stand-alone printing

The BradyPrinter S3100 is your ideal option for on-the-spot label creation throughout your facility. The easy-to-use touchscreen display provides the information you need for fast and easy label creation. Plus, take the guesswork out of creating labels with the intuitive interface that provides a variety of pre-set templates. With a full visual display, you see exactly what your label looks like before printing — so you save time and materials by printing the right label right away.



## Print fast with print smart technology

Print smart technology allows the printer, labels and ribbons to work together for efficient label setup. It's all in the smart chip embedded in our materials – it stores the material size, type, color, quantity and compatibility, and sets proper burn settings and print speed. When installed, the chip sends that information to the printer and displays it on screen to provide a variety of time- and cost-saving benefits:

- Decreased setup time
- Reduced label errors
- Compliant label creation
- Reduced material waste

## What's New?

You've come to expect simple and fast from start to print with Brady. To better align with your needs, we've evolved the popular BBP®31 printer into the new BradyPrinter S3100, offering:

- Updated user interface
- More robust label cutter
- Included mouse
- Print queue
- More responsive touchscreen

# The right label material from the right company

Nothing leaves Brady's doors without meeting the highest quality standards. Backed by more than 100 years of identification experience and rigorous R&D testing, Brady manufactures materials you can trust.

Designed to withstand industrial environments, our materials last — some even up to 10 years outdoors. And you can choose from hundreds of label types and sizes to align with your specific application.



Arc Flash Labels



GHS Labels



Safety and Facility ID



Pipe Markers



Equipment Labels



Inventory Identification



Tags



Raised Panel Labels



Floor Marking





## Indoor/Outdoor Vinyl (B-595)

- For general facility and safety identification: Our best industrial vinyl yet!
- Durable, low-shrink vinyl with our most aggressive adhesive
- Conforms to irregular, curved, rough and highly textured surfaces (painted cinder blocks, uneven wood, textured plastics, paper-jacketed pipes, powder-coated surfaces)
- Adheres to "difficult" low-surface energy items (PVC piping, blow-molded equipment cases, ABS plastics, recycled plastics)

Service temp: -40°F to 180°F  
Application temp: 0°F to 180°F  
Average outdoor durability: 8-10 years  
Agency approvals: **RoHS**

▶ Continuous tape from 0.5 in. to 4 in. widths  
12 color options

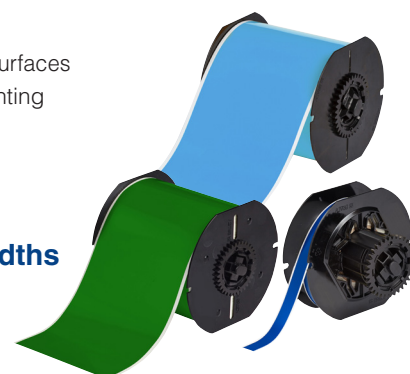


## Low-Halide Polyester (B-569)

- Low-halide content for labeling stainless steel pipes and surfaces
- Applies best to very smooth surfaces and ideal for mounting to rigid panels

Service temp: -40°F to 212°F  
Application temp: 0°F to 212°F  
Average outdoor durability: 3-5 years

▶ Continuous tape from 0.5 in. to 4 in. widths  
16 color options



## Retro Reflective Tape (B-584)

- Highly reflective material shines back brightly when struck by light
- Ideal for labeling outdoor utility pedestals, hard hats, jobsite equipment and roof-top equipment
- Recommended for low light or inclement weather conditions

Service temp: -40°F to 158°F  
Application temp: 0°F to 158°F (yellow & orange), 50°F to 158°F (silver)  
Average outdoor durability: 4-6 years

▶ Continuous tape from 1.125 in. to 4 in. widths  
3 color options





## Pre-Printed Pre-Cut Blank Sign Headers (B-595)

- Allows printer to create multicolor signs fast — in a single print pass
- 6 headers and 2 blank label options meet NFPA 70E, OSHA 1910.145 and ASME/ANSI Z535 standards
- Indoor/outdoor grade material conforms to rough, highly textured and “difficult to adhere to” surfaces

Service temp: -40°F to 180°F  
Application temp: 0°F to 180°F  
Average outdoor durability: 8–10 years  
Agency approvals: **RoHS**

- ▶ **Die-cut sizes 2.25 in. x 3 in. and 4 in. x 6 in., and additional blank die-cut sizes 6 headers and 2 blank color options**



## Pre-Printed GHS / CLP Chemical Labels (B-7569)

- Blank labels with pre-printed red diamonds allow the printer to produce 2-color GHS / CLP labels in one print pass
- 4 sizes of labels with 7 diamond layouts that match templates in the printer app or in the Brady Workstation GHS App
- Indoor/outdoor vinyl and polyester material and durable inks withstand exposure to moisture, chemicals and handling

Service temp: -4°F to 180°F  
Application temp: 50°F to 180°F  
Average outdoor durability: 3–5 years

- ▶ **4 die-cut sizes up to 4.13 in. x 6.1 in. 7 diamond layout options**



## Pre-Printed Right-To-Know Chemical Labels (B-595)

- Produce 5-color chemical labels in a single print pass
- Indoor/outdoor grade material withstands exposure to moisture, chemicals and handling

Service temp: -40°F to 180°F  
Application temp: 0°F to 180°F  
Average outdoor durability: 8–10 years  
Agency approvals: **RoHS**

- ▶ **NFPA diamond and color bar layouts in a variety of sizes**







## Raised Profile Labels/Engraved Plate Substitutes Labels (B-593)

- High-gloss, polyester label with thick raised profile and ultra-aggressive adhesive (0.70mm thick)
- High-performance, low-cost substitute for engraved plates
- 10-year outdoor durability rating
- Printout in approximately 4 seconds

Service temp: -4°F to 212°F

Application temp: 50°F to 212°F

Average outdoor durability: up to 10 years

Agency approvals:



**Costs up to 80% less than engraved legend plates!**

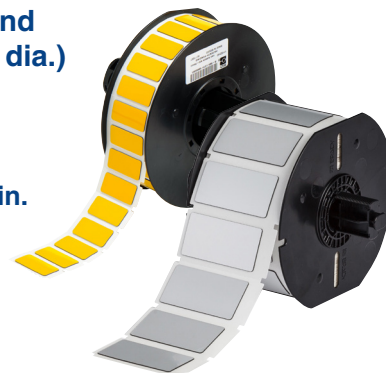


### ► Push Button Style:

**5 push button sizes (including keyed and non-keyed, 22.5 mm and 30.5 mm hole dia.)**  
**5 color options**

### ► Rectangular Style:

**7 sizes from 0.5 in. x 1 in. to 2.5 in. x 3 in.**  
**6 color options**



## Cold Temperature Application Material (B-549)

- Special adhesive permanently adheres to extremely cold surfaces
- Can be applied in -10°F and lasts in -40°F
- Ideal for cold storage warehouses, coolers, freezers and short-term winter outdoor use

Service temp: -40°F to 212°F

Application temp: -10°F to 212°F

Average outdoor durability: up to 1 year

- **Continuous tape from 1.125 in. to 4 in. widths**  
**2 color options**





## Printable Magnetic Supply (B-509)

- Easiest and quickest material for removing and repositioning
- Non-adhesive magnetic material that can be printed on directly
- Ideal for reusable, repositionable and lean / 5S identification applications

Service temp: 0°F to 158°F

Average outdoor durability: 3-5 years

- ▶ **Continuous media from 2.5 in. to 4.25 in. widths**
- 2 color options**



## Repositionable Vinyl (B-581)

- Aggressive adhesive stays in place but removes cleanly without leaving adhesive residue
- Ideal for temporary, removable and repositionable labels, such as 5S and lean inventory labels

Service temp: -40°F to 180°F

Application temp: 50°F to 180°F

Average outdoor durability: 5 years

- ▶ **Continuous tape from 0.5 in. to 4 in. widths**
- 2 color options**



## ToughWash® Washdown Resistant Labels (B-854, B-855)

- Withstands high pressure, heat, harsh chemicals and numerous washdown cycles
- B-854 offers metal detectable layer for detecting foreign debris in food stream
- Legible and long-lasting for even the toughest washdown cycles
- Ideal for use in the food & beverage industry

Service temp: -40°F to 230°F

Agency approvals: RoHS

- ▶ **3 header labels sized at 4 in. x 6 in.**
- 2 continuous blank colors from 1.125 in. to 4 in. wide**





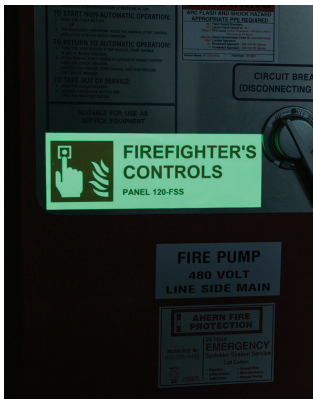
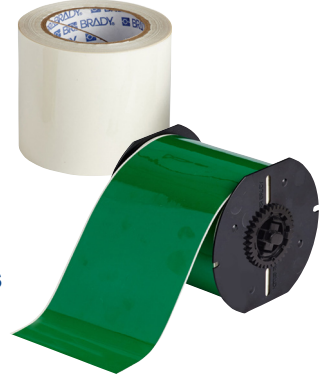


## ToughStripe® Printable Floor Marking Tape (B-483 with overlamine)

- Revolutionary B-483 material has ultra-aggressive adhesive
- Withstands forklift and pallet jack traffic without tearing or lifting
- Easy 3-step process: print label, position on floor, apply overlamine
- Each roll ships with a roll of clear overlamine which must be applied over printed label and onto appropriate surface for best performance

Service temp: -40°F to 248°F  
Agency approvals:

▶ Continuous tape from 1.125 in. to 4 in. widths  
7 color options



## BradyGlo™ High-Intensity Photoluminescent Tape (B-526)

- For glow-in-the-dark identification up to 10 hours
- Designed for directional, evacuation and equipment marking
- Ideal for marking emergency utility shut-offs, fire extinguishers, alarm pulls and vital equipment controls
- Complies with indoor use requirements specified in RS 6-1 and 6-1A of New York Local Law 26

Service temp: -40°F to 140°F  
Application temp: 40°F to 140°F

▶ Continuous tape from 1.125 in. to 4 in. widths  
Luminous green color



## Non-Adhesive Tags (B-551)

- Non-adhesive semi-rigid plastic in pre-cut and continuous styles
- Pre-cut with hole and chamfered corners
- Micro-perforated between tags to separate cleanly

Service temp: -40°F to 193°F  
Average outdoor durability: up to 2 years

▶ Die-cut tags 3.25 in. x 5.75 in.  
Continuous media from 2.5 in. to 4.25 in. wide  
3 headers and 1 blank color options





## Product ID Materials

- A variety of polyester and specialty materials in wide 4.0 in. format rolls
- Ideal for smaller volume custom Product ID and general industrial labels
- Proven materials with agency approvals for Product ID and asset tracking applications

▶ **Continuous tapes in 4 in. widths  
6 color options**



**B-424:** Paper

**B-423:** Polyester with standard adhesive

**B-428:** Metallized polyester with standard adhesive for smooth surfaces

**B-432:** Polyester with stronger adhesive

**B-434:** Metallized polyester with stronger adhesive for textured surfaces

**B-437:** Tedlar® for high-temp labeling & cable wraps

**B-480:** Non-metal polyester with rubber-based adhesive for oily/greasy surfaces

**B-483:** Polyester with ultra-aggressive adhesive for rough surfaces

**B-484:** Polyester with ultra-aggressive adhesive and pliability for angular surfaces

**B-489:** Polyester with ultra-aggressive adhesive for rough surfaces

**B-488:** Polyester with standard adhesive and chemical resistance

**B-486:** Metallized polyester with ultra-aggressive adhesive for rougher surfaces

**B-498:** Vinyl Cloth

**B-565:** Metallized polyester with standard adhesive

**B-595:** Indoor/outdoor vinyl

**B-724:** Polyimide label for extremely high temperatures

**B-727:** Polyimide label for standard temperatures

**B-787:** Polyvinylfluoride tape

Matte bright white

Gloss white

Matte silver

Clear

Gloss silver

Satin light gray

Gloss white

Gloss white

Matte white

Matte white

Matte silver

Semi-gloss white

Matte silver

Semi-gloss white

Matte amber

Gloss white

Gloss white

Service temp: -40°F to 124°F

Service temp: -94°F to 248°F

Service temp: -40°F to 293°F

Service temp: -40°F to 212°F

Service temp: -40°F to 194°F

Service temp: -94°F to 275°F

Service temp: -94°F to 248°F

Service temp: -94°F to 248°F

Service temp: -40°F to 240°F

Service temp: -94°F to 248°F

Service temp: -40°F to 320°F

Service temp: -40°F to 248°F

Service temp: -40°F to 175°F

Service temp: -40°F to 240°F

Service temp: -40°F to 180°F

Service temp: -94°F to 518°F

Service temp: -94°F to 212°F

Service temp: -94°F to 212°F

RoHS

RoHS

RoHS

RoHS

RoHS

RoHS

RoHS

RoHS

RoHS

RoHS

RoHS

RoHS

RoHS

RoHS

RoHS

RoHS

RoHS

RoHS



## Metallized Polyester Labels (B-428, B-434, B-486, B-565)

- For product labeling, asset tracking and general industrial ID
- Ideal for serial number plates and rating plates with name-plate quality and metal-looking finish
- 3 adhesive strengths/gloss configurations and sizes to meet your needs

**B-428:** Service temp: -40°F to 293°F

**B-434:** Service temp: -40°F to 194°F

**B-486:** Service temp: -40°F to 248°F

**B-565:** Service temp: -40°F to 240°F

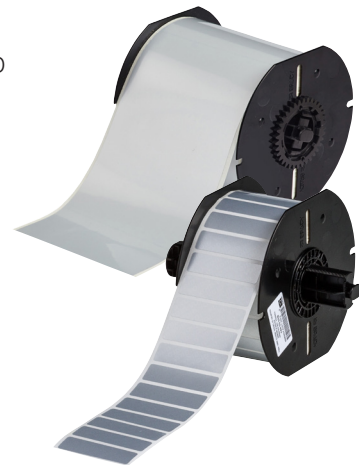
Agency approvals:

Agency approvals:

Agency approvals:

Agency approvals:

▶ **Continuous tapes in 4 in. widths  
Die-cut labels up to 3 in. x 2 in.**







## Create complex labels with intuitive software

When you have more complex identification projects, connect the BradyPrinter S3100 to your PC and create labels with the intuitive **Brady Workstation software**.

This software is a combination of applications and software suites that are designed to help you easily create and print labels for a variety of applications in your facility. These apps and suites are tailored to make specific identification tasks throughout your facility fast and easy so you can complete the job with ease.

### Apps

Developed with built-in regulations, standards, pictograms, common phrases, data importation guidance, help functions and more, you have the tools you need to create labels for nearly any application.

### Suites

Choose from a variety of suites that combine various sets of apps to meet your labeling needs.



#### Safety and Facility Identification Suite

Keep your facility safe and compliant with this suite. This software makes it easy to create custom signs, labels and pipemarkers to add visual safety guidance to your facility.



#### Automation Suite

Get the power to fully automate your label printing with this suite. Easily set up templates and import data to make label creation an automated and error-free process.



#### Print Partner Suite

This suite includes everything you need to fill in your templates and print, including importing data from a variety of supported data sources or automatically generating sequential data for your labels.



**Download your free 30-day trial!**



1. Download Brady Workstation at [www.bradyid.com.sg/workstation](http://www.bradyid.com.sg/workstation)



2. Fill your workstation with individual apps or an entire suite



3. Save time by quickly designing labels and printing

## Printer Specifications

Catalog #	Description
Automatic label set up	Yes
Barcode capability	Barcode capable
Calibration required	No
Color printing capability	Single color
Custom media parts available	No
Dimensions	9.5 in. H x 12 in. W x 10.25 in. D
Display size	6.12 in. W x 3.62 in. H
Estimated media changeover time	20 seconds
Font sizes	0.05 in. to 3.5 in. text
Maximum printed label length	5 ft.
Maximum label/tape width	4.25 in.
Maximum print speed	3 in. per second
Maximum print width	4 in.
Minimum label length	0.5 in.
Number of symbols	247
Special characters quantity	95
Power supply voltage	110 to 240 volts
Print multiple copies	Yes
Print preview feature	Yes
Print resolution	300 dpi
Warranty	1 year
Weight	20 lbs
Applications	Arc flash labels, arrow tape, chemical labeling, cold-temperature labeling, equipment marking, facility & safety ID, floor marking, GHS & chemical labels, glow-in-the-dark labels, hazardous material labeling, lean/5, lockout tagout labeling, machine tool labeling, material handling labeling, pipe & valve marking, plant maintenance labeling, safety & compliance ID, secondary container chemical labeling, visual workplace labeling
Barcode symbologies linear	Code 128 auto, code 39, EAN/JAN-13, interleaved 2 of 5 UPCA, more through Brady Workstation
Barcode symbologies - 2d	PDF 417, QR Code, more through Brady Workstation
Label material types	Indoor/outdoor grade vinyl, tamper-evident metallized polyester, pre-printed header material, cold temperature tape, low-halide polyester, magnetic supply, metallized polyester tape, photoluminescent tape, polyimide, polypropylene, pre-printed GHS/CLP labels, pre-printed sign header labels, push button and raised panel labels, reflective tape, repositionable vinyl, right-to-know chemical labels, tags, ToughStripe® floor marking tape, ToughWash® washdown resistant labels, ToughWash® washdown resistant tape
Connectivity options	Ethernet, USB
Continuous & die-cut materials supported	Continuous tapes and die-cut labels
Cutter type	Auto cutter
Display type	Color touchscreen
Font styles	Arial, Arial 65, Courier New, Tahoma, Times New Roman
Includes	Cleaning kit, cutter cleaning tool, documentation holder, power cable, printer, quick start guide, stylus, mouse, USB cable
Keyboard type	Full size QWERTY
Kits available	Yes
Label/media format	Cartridge
Built-in label wizards	Arc flash, custom label, general templates, GHS/CLP, pipe marker, premade labels, right-to-know, tags, WHMIS
Languages available	English, Korean, Traditional Chinese, Simplified Chinese, Bulgarian, Czech, Danish, German, Spanish, Finnish, French, Hungarian, Italian, Dutch, Norwegian, Polish, Portuguese, Romanian, Russian, Slovakian, Slovenian, Swedish, Turkish, Estonian, Croatian
Maximum labels per day	600 2 in. x 4 in. labels per day, 300 larger labels per day, 8hrs / 5 days
Media sensor type	Notch
Memory	256 MB



## BradyPrinter S3100

SIGN & LABEL PRINTER

### Printer Part Numbers

Catalog #	Description
S3100	BradyPrinter S3100 sign & label printer
<b>Accessories</b>	
120994	Rolling case w/ handle and supplies pockets
B31-WIPER	5 pack of extra media wipers
B31-CCT	Cutting cleaning tool
PCK-6	50 pack of cleaning swabs pre-soaked in IPA
STYLUS-CAP	Stylus
<b>Printer Kits</b>	
S3100-BWSSFID	S3100 printer* with Brady Workstation SFID kit
S3100-GHS-KIT	S3100 printer* with GHS supply kit
S3100-PIPE-KIT	S3100 printer* with pipe ID supply kit
S3100-GEN-KIT	S3100 printer* with general industrial and 5S supply kit
S3100-ARC-KIT	S3100 printer* with arc flash supply kit
S3100-SAFE-KIT	S3100 printer* with safety and compliance supply kit
S3100-LEAN-KIT	S3100 printer* with 5S visual workplace supply kit

\*Printer includes cleaning kit, cutter cleaning tool, documentation holder, power cable, printer, quick-start guide, stylus, mouse and USB cable.

## CONTACT US

Brady's global presence makes it easy for you to do business with us wherever you are. To find out more about Brady and our products, please visit us at [www.bradyyd.com.sg](http://www.bradyyd.com.sg) or email us at [ContactUs\\_SA@bradycorp.com](mailto:ContactUs_SA@bradycorp.com).

### SEA Offices

**INDONESIA**  
Telephone: (65) 6477 7261

**SINGAPORE**  
Telephone: (65) 6477 7261

**MALAYSIA**  
Telephone: (60) 4 810 1688

**THAILAND**  
Telephone: (66) 2 512 2400

**PHILIPPINES**  
Telephone: (65) 6477 7261

**VIETNAM**  
Telephone: (65) 6477 7261